

**The 2017-2018 Report of Degrees Awarded  
by the University of Missouri**

Randy Sade  
Senior Research Analyst

Office of Institutional Research  
University of Missouri System

September 2018

UM-IR 2018, Report 1

<http://www.umsystem.edu/ums/fa/ir/>

# The 2017-2018 Report of Degrees Awarded by the University of Missouri

## Executive Summary

This report includes graphs and tables of degrees awarded by each campus since FY 2009. The first table provides a summary of degrees by level for each campus, while the second table series gives the number of awards by the colleges of each campus. The *Department Detail Summary* reflects the number of degrees awarded by academic department. These tables also show the average number of degrees over a 3, 5, & 10-year period and the percent change in FY 2018 that is relative to the 10-year average.

The highlights of the report from the Table 1 series include:

- The University of Missouri System awarded 18,455 degrees and certificates, a 9% growth in FY 2018 relative to the 10-year average.
- Relative to the 10-year average, the number of FY 2018 doctorate degrees for the University of Missouri System increased 25% and graduate certificates increased 46%.
- Comparing FY 2018 degrees to the 10-year averages, the most notable increases are: bachelors degrees awarded are up 14% at UM-Columbia and 21% at Missouri S&T; master degrees are up 8% at Missouri S&T; and doctorates are up 25% at UM-Columbia and 43% at Missouri S&T.
- First Professional degrees at UM-Kansas City increased 6% when comparing FY 2018 to the 10-year average.
- Based on the 10-year averages, Graduate Certificates continues to grow in FY 2018 with a 71% increase at UM-Columbia and 42% increase at UM-Kansas City.

## Notes Regarding Use of the Report:

- The official annual reporting period is from July 1 to June 30 of the following calendar year. For example, FY18 includes summer and fall graduates from 2017 and the spring graduates of 2018.
- Please note the axis scale range when considering graphs. It may change from campus to campus.
- Previous year's tables may differ because tables in the report have been changed from the use of running averages to 3-, 5-, and 10-year averages.
- This report includes a 10-year average as related to FY 2018.
- Source for this report is the printed Completions Report.

## Technical Notes for Use with the Report:

### Footnotes

- Footnotes are of the utmost importance in reading tables in the appendix.

### Name Changes

- If a program name changes, the report history is changed to reflect the new name and is footnoted.
- If a degree name or description is changed, the report history is changed to the new description and is footnoted.
- If a department name changes, the report history is changed to the new description and NO footnotes are made.
- If a school or college changes, the report history is changed to the new description and NO footnotes are made.

### Program Moves

- If a program moves to another department or school, the data are reported as is – that is, report history is not changed and new data are reported in the new department. A new footnote is added, i.e., program is moving. Eventually – when there are no more degrees for the old department, the old department is hidden in the report.
- If a program moves to another school or college, the data are reported as is – that is, report history is not changed and new data are reported in the new school or college. A footnote is added, i.e., program is moving. Eventually – when there are no more degrees for the old program, the former program is hidden in the report.

Figure 1.0: Rate of Change in Total Degrees & Certificates Awarded for the University of Missouri System, since 2009

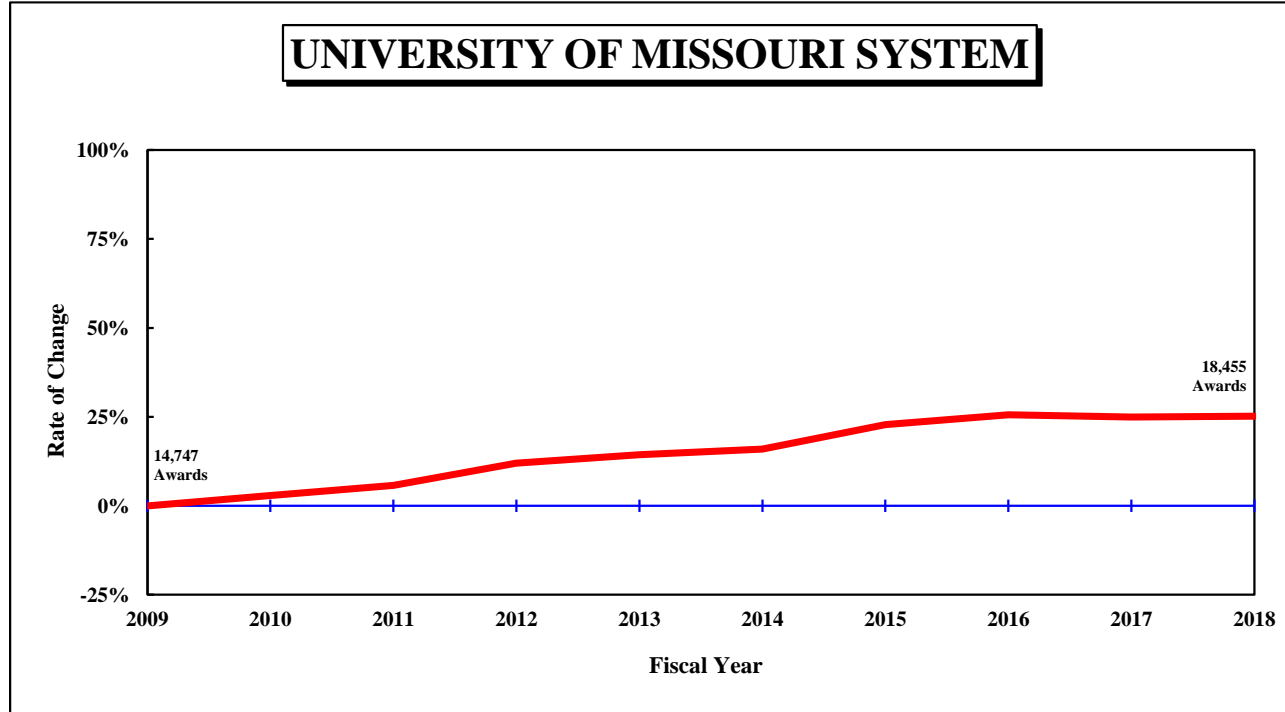


Table 1.0: Degrees and Certificates Awarded for the University of Missouri System, July 1, 2008 through June 30, 2018

DEGREE	FY 2009	FY 2010	FY 2011	FY 2012	FY 2013	FY 2014	FY 2015	FY 2016	FY 2017	FY 2018	3-Year Average	5-Year Average	10-Year Average	Change in FY18 relative to the 10-Year Avg.
<b>UNIVERSITY OF MISSOURI SYSTEM</b>														
Undergrad. Certificate	2	1	4	2	2	23	55	44	56	66	55.3	48.8	25.5	159%
Bachelors	9,289	9,604	9,699	10,317	10,543	10,733	11,360	11,654	11,546	11,669	11,623.0	11,392.4	10,641.4	10%
Graduate Certificate	438	520	539	623	781	740	780	839	869	1,047	918.3	855.0	717.6	46%
First Professional	763	800	818	790	847	837	876	833	829	832	831.3	841.4	822.5	1%
Masters	3,620	3,608	3,870	4,069	3,919	4,013	4,204	4,330	4,217	3,956	4,167.7	4,144.0	3,980.6	-1%
Education Specialist	148	123	100	104	115	113	122	100	93	67	86.7	99.0	108.5	-38%
Doctorate	487	519	557	610	660	640	712	720	816	818	784.7	741.2	653.9	25%
<b>Total, All Awards</b>	<b>14,747</b>	<b>15,175</b>	<b>15,587</b>	<b>16,515</b>	<b>16,867</b>	<b>17,099</b>	<b>18,109</b>	<b>18,520</b>	<b>18,426</b>	<b>18,455</b>	<b>18,467.0</b>	<b>18,121.8</b>	<b>16,950.0</b>	<b>9%</b>

Figure 1.1: Rate of Change in Total Degrees & Certificates Awarded at the University of Missouri–Columbia, since 2009

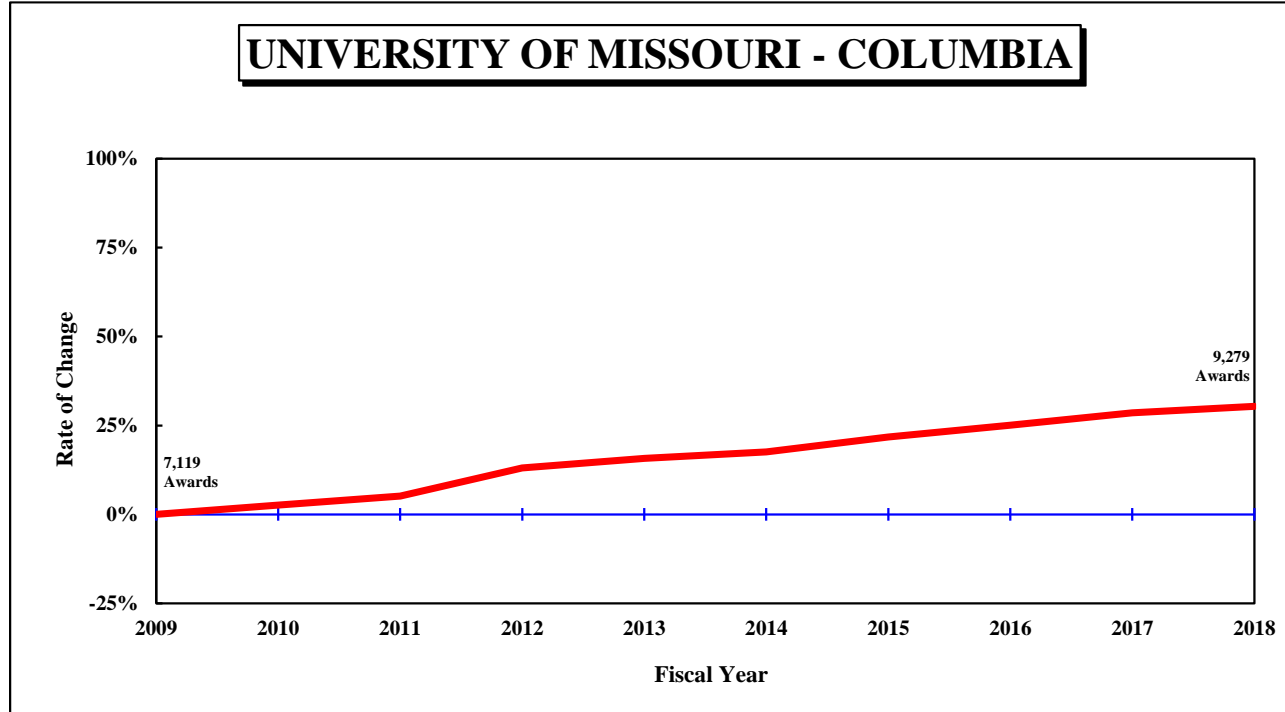


Table 1.1: Degrees and Certificates Awarded at the University of Missouri–Columbia, July 1, 2008 through June 30, 2018

DEGREE	FY 2009	FY 2010	FY 2011	FY 2012	FY 2013	FY 2014	FY 2015	FY 2016	FY 2017	FY 2018	3-Year	Average 5-Year	10-Year	Change in FY18 relative to the 10-Year Avg.
<b>UNIVERSITY OF MISSOURI - COLUMBIA</b>														
Bachelors	4,855	4,963	5,087	5,528	5,692	5,769	5,995	6,283	6,331	6,512	6,375.3	6,178.0	5,701.5	14%
Graduate Certificate	88	142	162	179	225	226	239	225	266	362	284.3	263.6	211.4	71%
First Professional	307	304	306	299	332	339	346	308	313	302	307.7	321.6	315.6	-4%
Masters	1,506	1,515	1,513	1,631	1,515	1,580	1,571	1,619	1,684	1,562	1,621.7	1,603.2	1,569.6	0%
Education Specialist	57	59	53	43	63	65	82	51	56	40	49.0	58.8	56.9	-30%
Doctorate	306	322	365	367	411	390	435	416	500	501	472.3	448.4	401.3	25%
<b>Total, All Awards</b>	<b>7,119</b>	<b>7,305</b>	<b>7,486</b>	<b>8,047</b>	<b>8,238</b>	<b>8,369</b>	<b>8,668</b>	<b>8,902</b>	<b>9,150</b>	<b>9,279</b>	<b>9,110.3</b>	<b>8,873.6</b>	<b>8,256.3</b>	<b>12%</b>

Figure 1.2: Rate of Change in Total Degrees & Certificates Awarded at the University of Missouri–Kansas City, since 2009

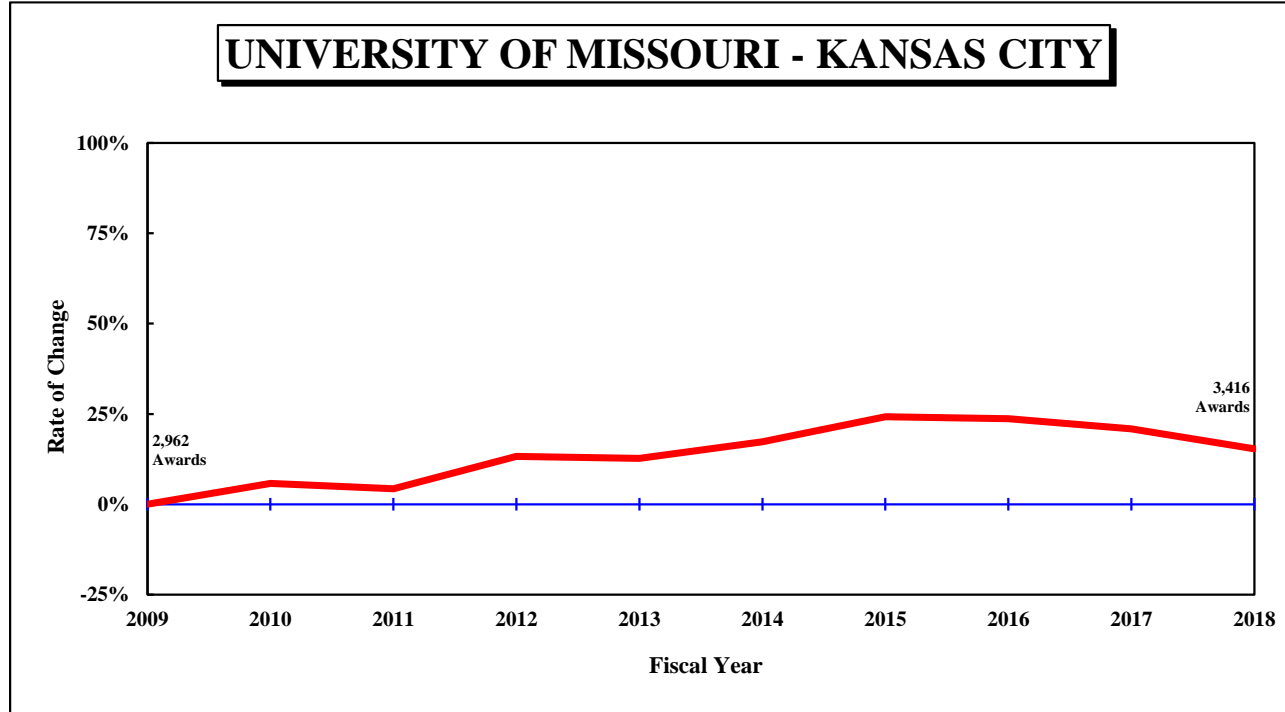


Table 1.2: Degrees and Certificates Awarded at the University of Missouri–Kansas City, July 1, 2008 through June 30, 2018

DEGREE	FY 2009	FY 2010	FY 2011	FY 2012	FY 2013	FY 2014	FY 2015	FY 2016	FY 2017	FY 2018	3-Year Average	5-Year Average	10-Year Average	Change in FY18 relative to the 10-Year Avg.
<b>UNIVERSITY OF MISSOURI - KANSAS CITY</b>														
Undergrad. Certificate							7	6	11	24	13.7	N/A	N/A	
Bachelors	1,496	1,633	1,523	1,749	1,759	1,803	1,812	1,741	1,824	1,753	1,772.7	1,786.6	1,709.3	3%
Graduate Certificate	20	18	24	29	33	33	50	71	48	54	57.7	51.2	38.0	42%
First Professional	412	455	468	444	475	459	489	480	473	491	481.3	478.4	464.6	6%
Masters	917	911	972	999	954	1,028	1,197	1,213	1,082	962	1,085.7	1,096.4	1,023.5	-6%
Education Specialist	49	33	25	35	24	35	26	32	20	18	23.3	26.2	29.7	-39%
Doctorate	68	83	77	99	93	116	98	120	122	114	118.7	114.0	99.0	15%
<b>Total, All Awards</b>	<b>2,962</b>	<b>3,133</b>	<b>3,089</b>	<b>3,355</b>	<b>3,338</b>	<b>3,474</b>	<b>3,679</b>	<b>3,663</b>	<b>3,580</b>	<b>3,416</b>	<b>3,553.0</b>	<b>3,562.4</b>	<b>3,368.9</b>	<b>1%</b>

Figure 1.3: Rate of Change in Total Degrees & Certificates Awarded at the Missouri University of Science and Technology, since 2009

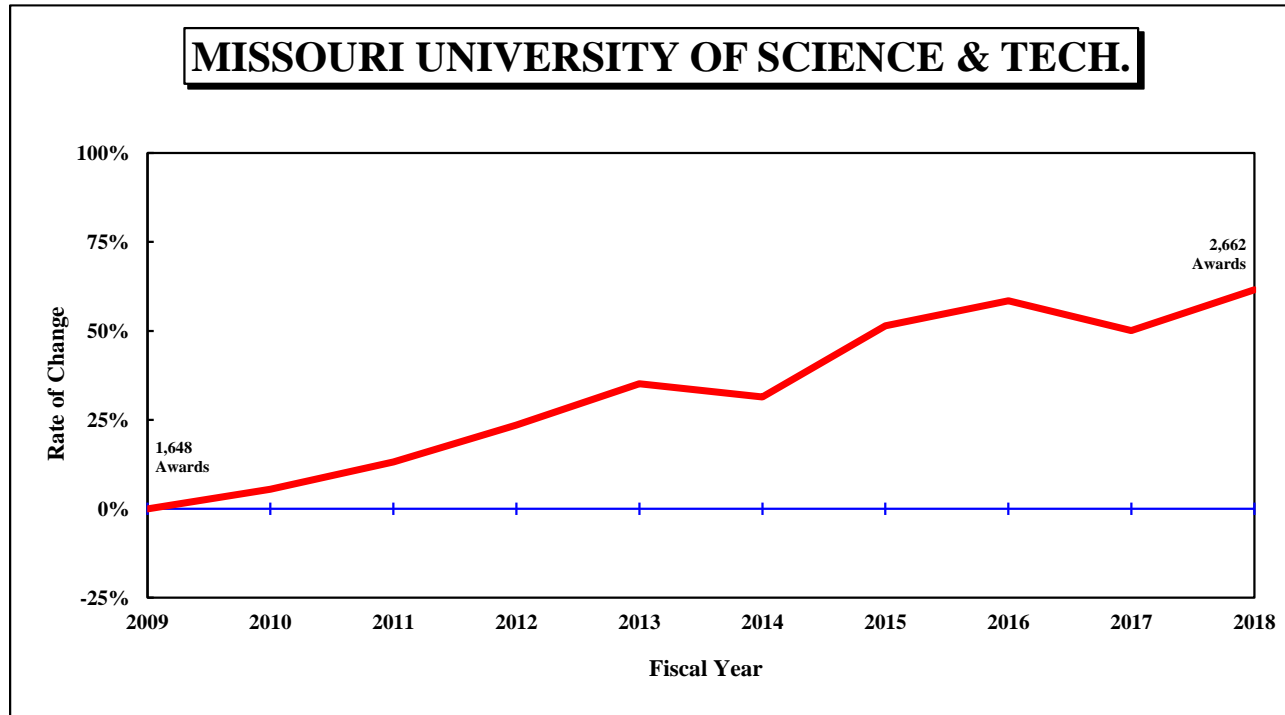


Table 1.3: Degrees and Certificates Awarded at the Missouri University of Science and Technology, July 1, 2008 through June 30, 2018

DEGREE	FY 2009	FY 2010	FY 2011	FY 2012	FY 2013	FY 2014	FY 2015	FY 2016	FY 2017	FY 2018	3-Year	Average 5-Year	10-Year	Change in FY18 relative to the 10-Year Avg.
<b>MISSOURI UNIVERSITY OF SCIENCE AND TECHNOLOGY</b>														
Undergrad. Certificate	2	1	4	2	0	3	14	9	8	7	8.0	8.2	5.0	40%
Bachelors	920	997	997	1,077	1,118	1,141	1,307	1,378	1,320	1,416	1,371.3	1,312.4	1,167.1	21%
Graduate Certificate	250	278	282	319	435	401	404	427	432	510	456.3	434.8	373.8	36%
Masters	426	411	517	567	579	551	675	688	625	613	642.0	630.4	565.2	8%
Doctorate	50	51	65	70	95	70	95	109	88	116	104.3	95.6	80.9	43%
<b>Total, All Awards</b>	<b>1,648</b>	<b>1,738</b>	<b>1,865</b>	<b>2,035</b>	<b>2,227</b>	<b>2,166</b>	<b>2,495</b>	<b>2,611</b>	<b>2,473</b>	<b>2,662</b>	<b>2,582.0</b>	<b>2,481.4</b>	<b>2,192.0</b>	<b>21%</b>

Figure 1.4: Rate of Change in Total Degrees & Certificates Awarded at the University of Missouri–St. Louis, since 2009

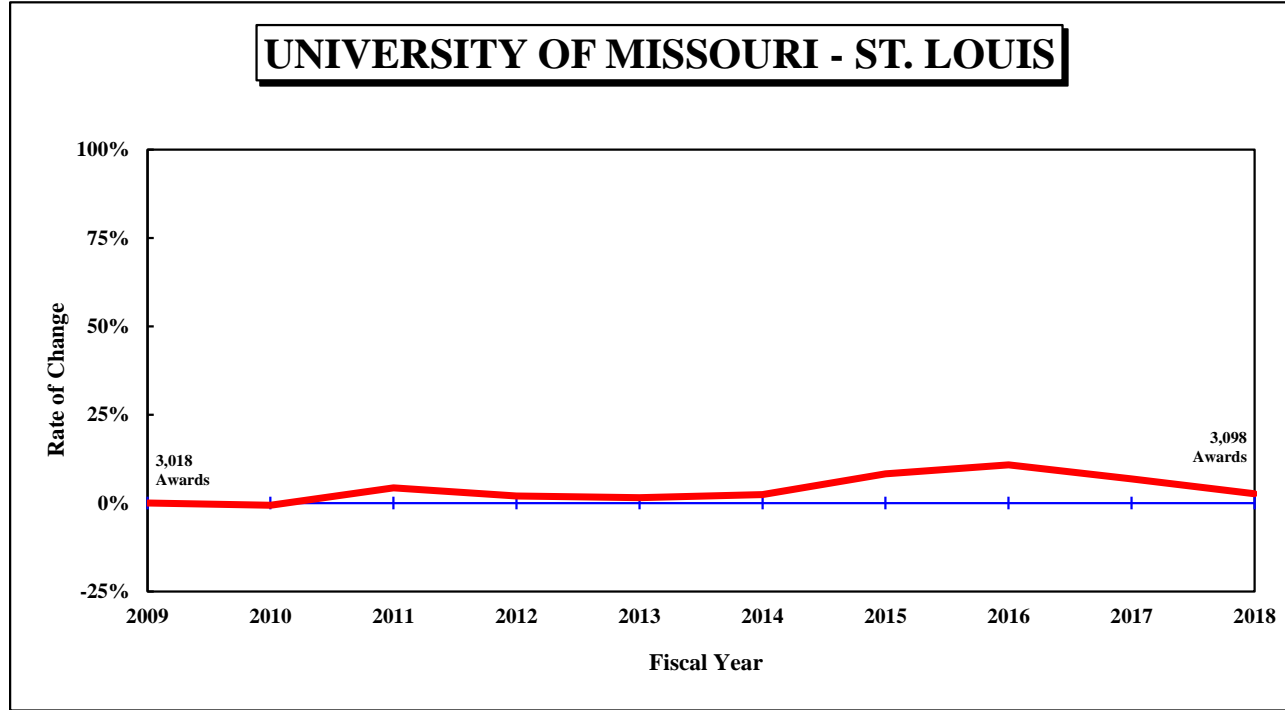


Table 1.4: Degrees and Certificates Awarded at the University of Missouri–St. Louis, July 1, 2008 through June 30, 2018

DEGREE	FY	FY	FY	FY	FY	FY	FY	FY	FY	FY	<u>Average</u>			Change in FY18 relative to the 10-Year Avg.
	2009	2010	2011	2012	2013	2014	2015	2016	2017	2018	3-Year	5-Year	10-Year	
<b>UNIVERSITY OF MISSOURI - ST. LOUIS</b>														
Undergrad. Certificate					2	20	34	29	37	35	33.7	31.0	N/A	
Bachelors	2,018	2,011	2,092	1,963	1,974	2,020	2,246	2,252	2,071	1,988	2,103.7	2,115.4	2,063.5	-4%
Graduate Certificate	80	82	71	96	88	80	87	116	123	121	120.0	105.4	94.4	28%
First Professional	44	41	44	47	40	39	41	45	43	39	42.3	41.4	42.3	-8%
Masters	771	771	868	872	871	854	761	810	826	819	818.3	814.0	822.3	0%
Education Specialist	42	31	22	26	28	13	14	17	17	9	14.3	14.0	21.9	-59%
Doctorate	63	63	50	74	61	64	84	75	106	87	89.3	83.2	72.7	20%
<b>Total, All Awards</b>	<b>3,018</b>	<b>2,999</b>	<b>3,147</b>	<b>3,078</b>	<b>3,064</b>	<b>3,090</b>	<b>3,267</b>	<b>3,344</b>	<b>3,223</b>	<b>3,098</b>	<b>3,221.7</b>	<b>3,204.4</b>	<b>3,132.8</b>	<b>-1%</b>



Figure 2.0: Rate of Change in Total Degrees Awarded, since 2009

UNIVERSITY OF MISSOURI SYSTEM

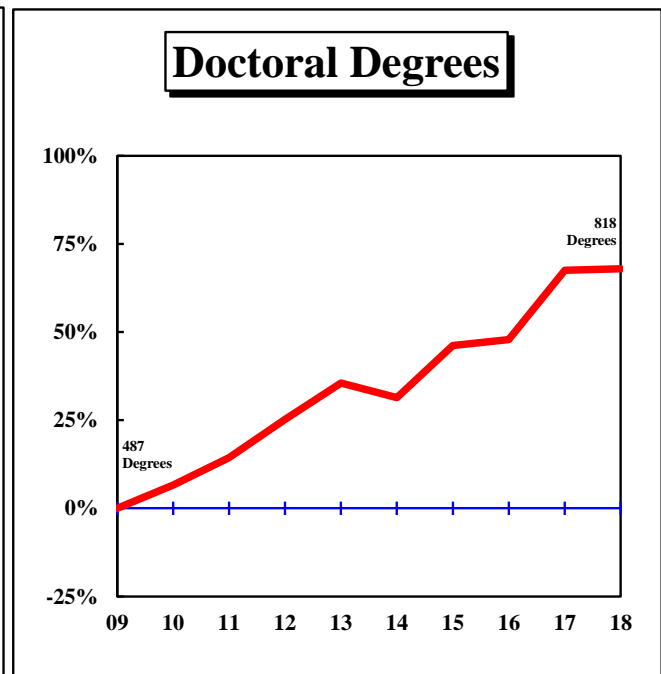
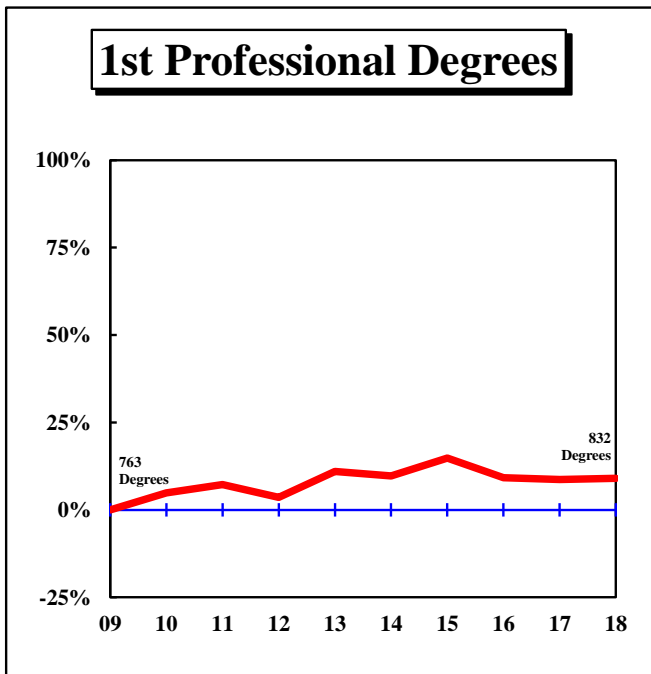
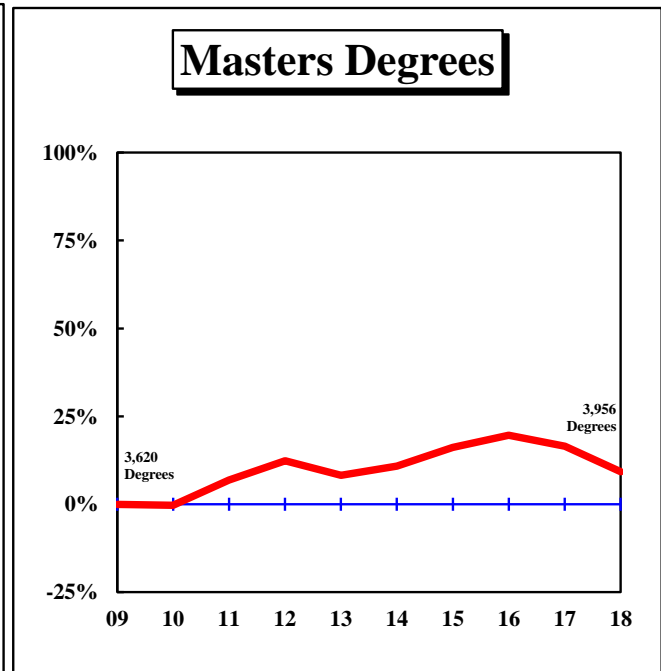
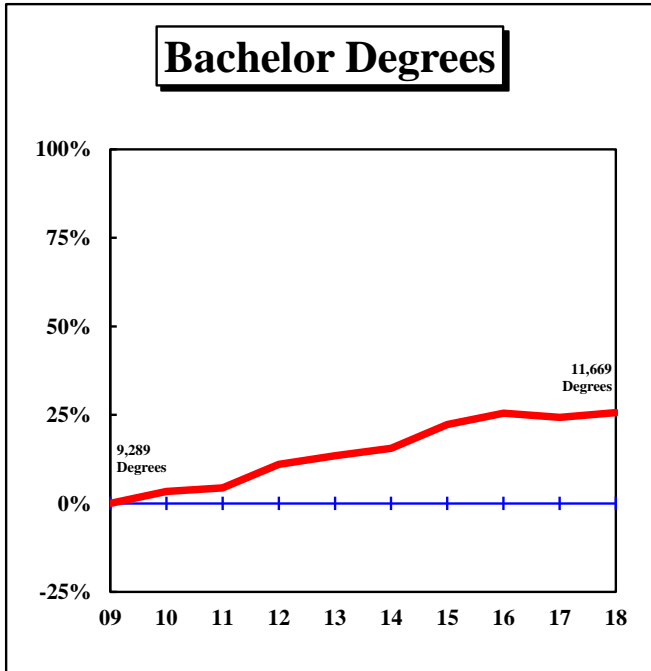


Figure 2.1: Rate of Change in Total Degrees Awarded by Campus, since 2009

UNIVERSITY OF MISSOURI-COLUMBIA

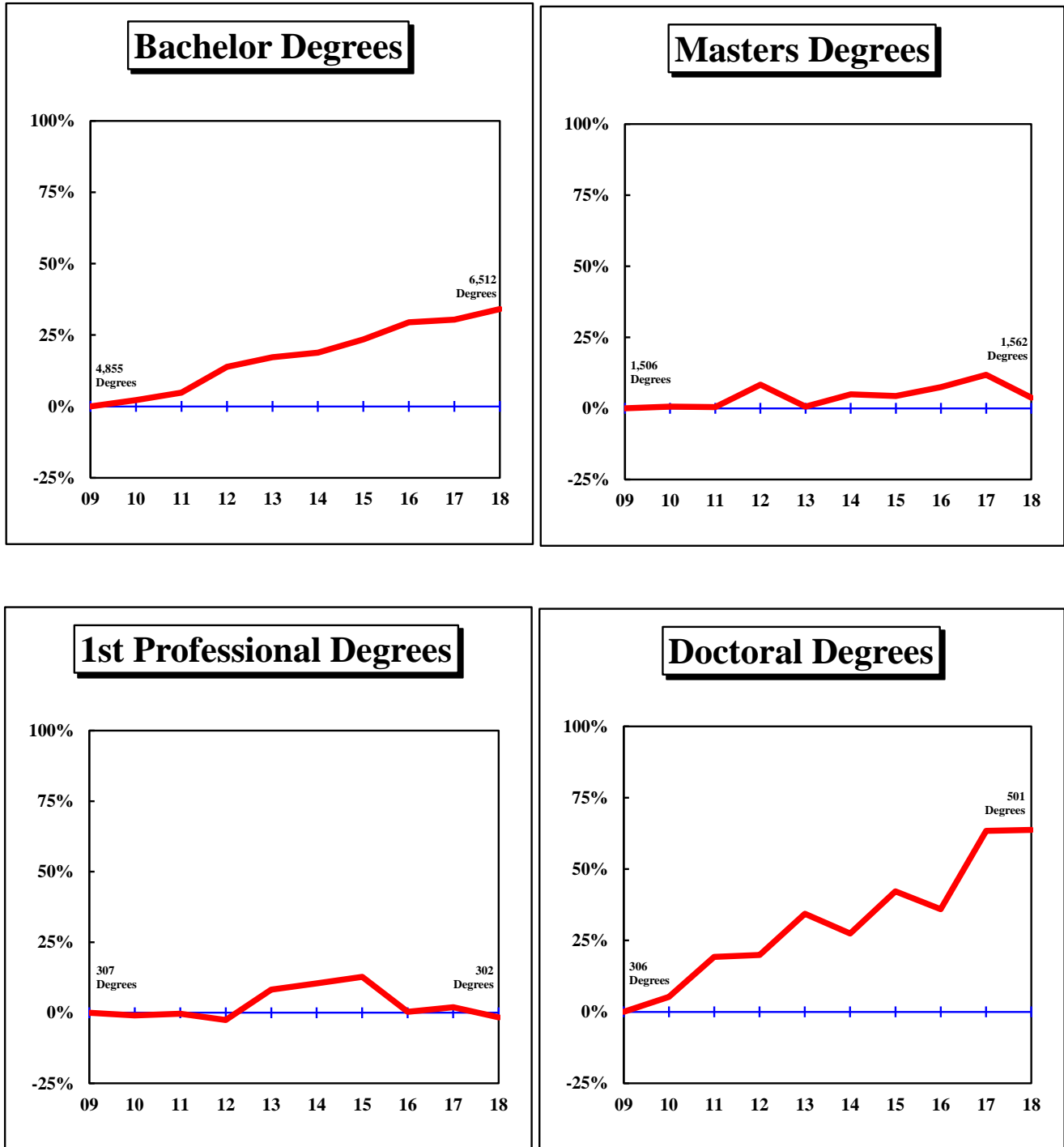


Figure 2.2: Rate of Change in Total Degrees Awarded by Campus, since 2009

UNIVERSITY OF MISSOURI-KANSAS CITY

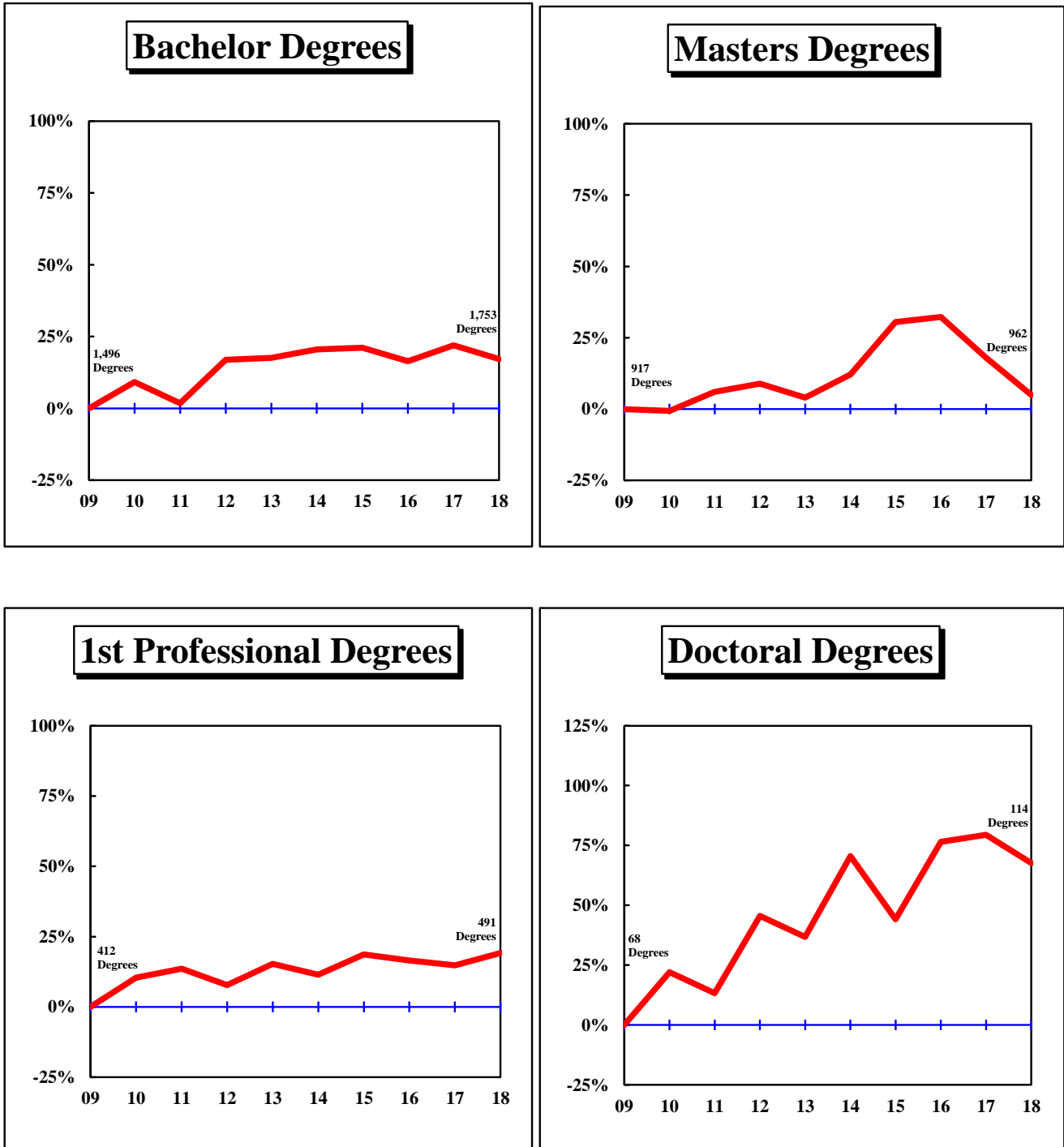


Figure 2.3: Rate of Change in Total Degrees Awarded by Campus, since 2009

MISSOURI UNIVERSITY OF SCIENCE AND TECHNOLOGY

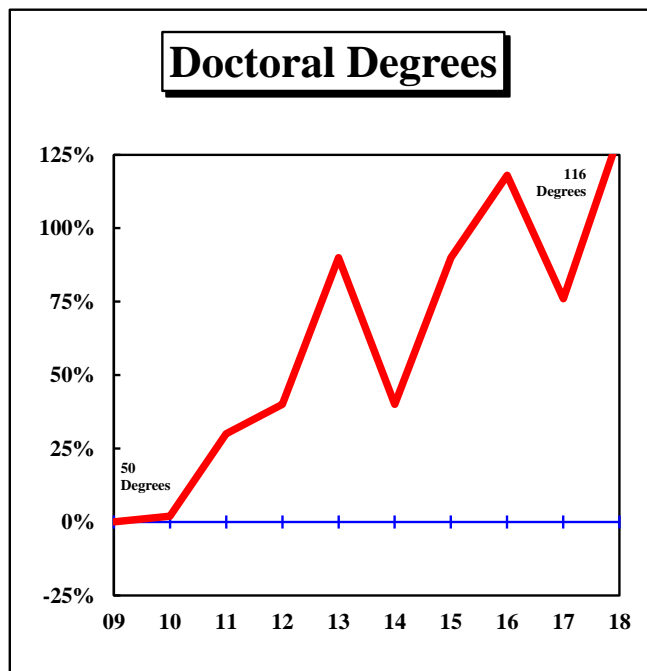
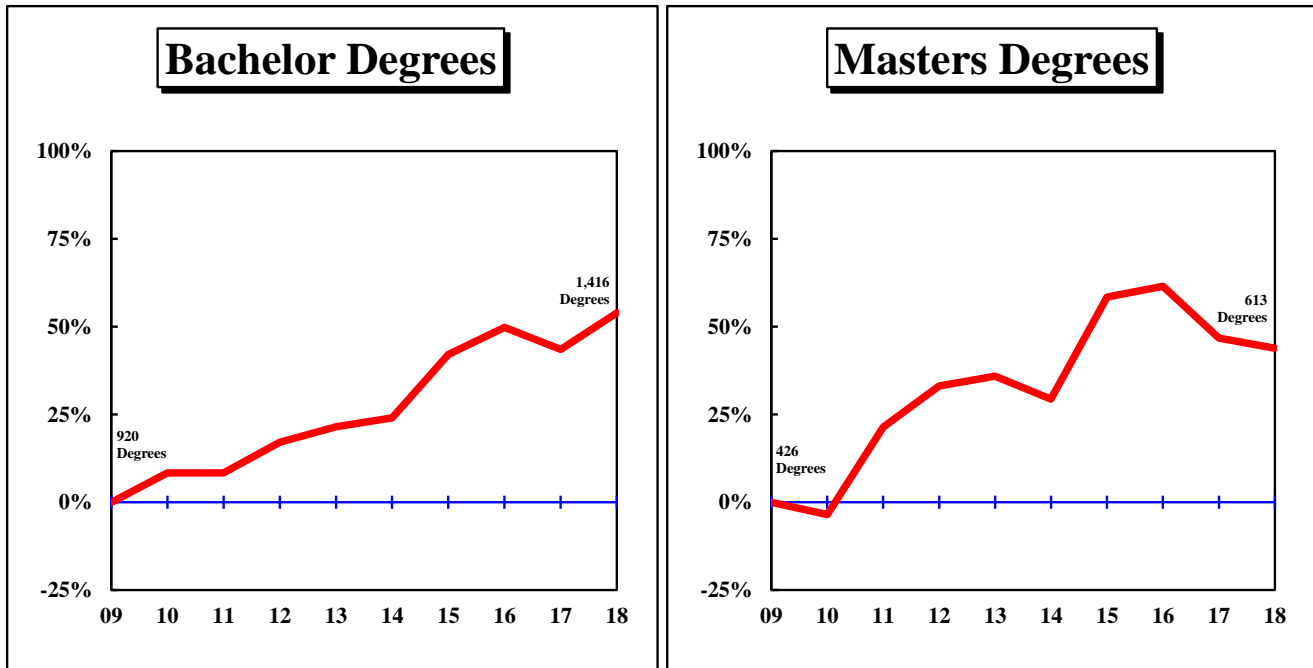
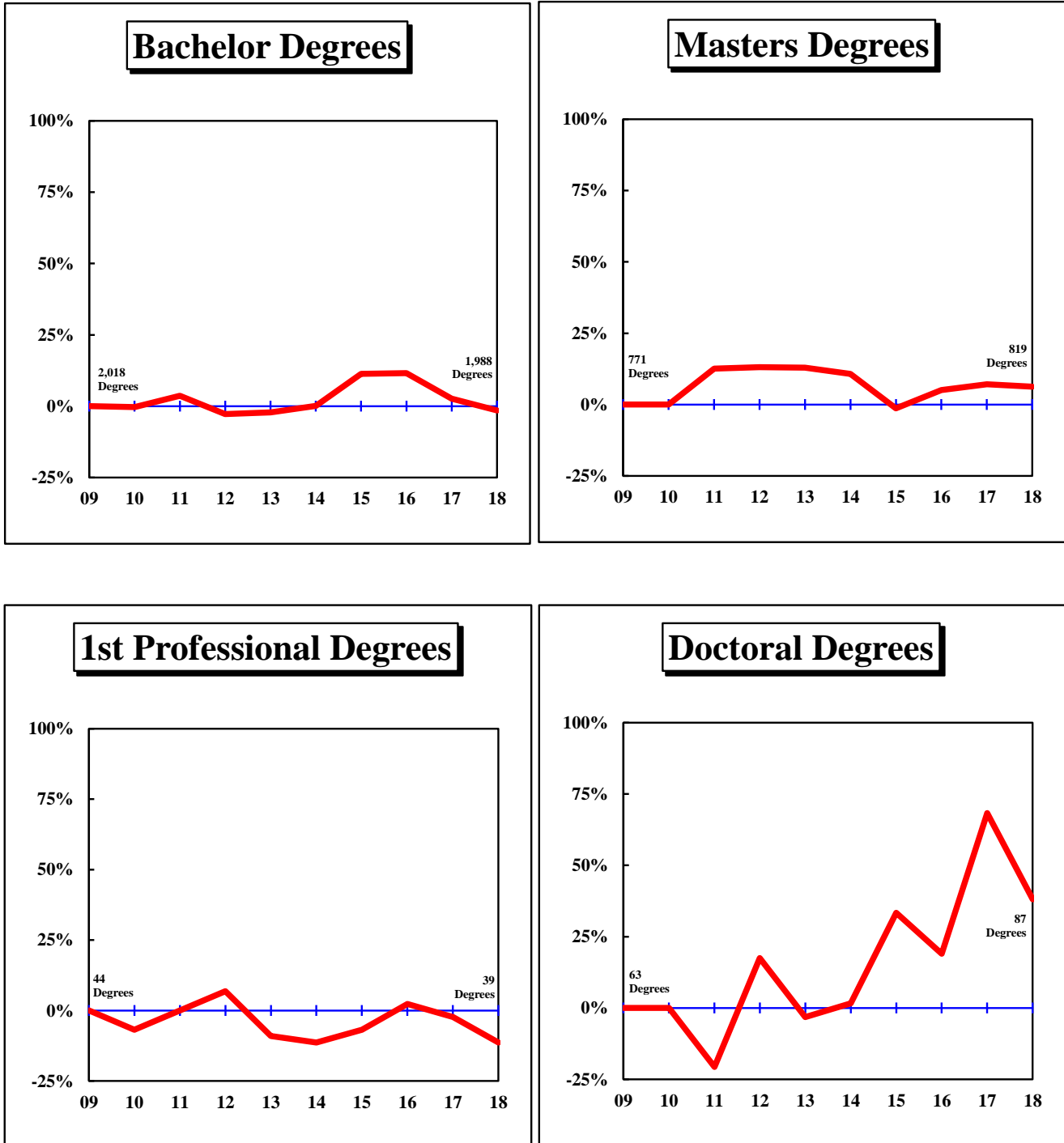


Figure 2.4: Rate of Change in Total Degrees Awarded by Campus, since 2009

UNIVERSITY OF MISSOURI–ST. LOUIS



**Table 2.1: Degrees and Certificates Awarded by Colleges at the University of Missouri–Columbia**

COLLEGE/DEGREE	FY	FY	FY	FY	FY	FY	FY	FY	FY	FY	<u>Average</u>			Change in FY18 relative to the 10-Year Avg.
	2009	2010	2011	2012	2013	2014	2015	2016	2017	2018	3-Year	5-Year	10-Year	
<b>AGRICULTURE, FOOD, AND NATURAL RESOURCES, COLLEGE OF</b>														
Bachelors	391	383	400	432	491	460	491	528	529	547	534.7	511.0	465.2	18%
Masters	51	38	45	51	44	68	38	63	47	49	53.0	53.0	49.4	-1%
Doctorate	32	28	27	24	34	35	33	28	40	37	35.0	34.6	31.8	16%
All	474	449	472	507	569	563	562	619	616	633	622.7	598.6	546.4	16%
<b>ARTS AND SCIENCE, COLLEGE OF</b>														
Bachelors	1,741	1,744	1,812	1,961	2,046	1,902	1,963	1,913	1,962	1,994	1,956.3	1,946.8	1,903.8	5%
Masters	176	144	176	169	168	209	197	182	179	247	202.7	202.8	184.7	34%
Doctorate	97	104	98	119	106	113	141	124	120	147	130.3	129.0	116.9	26%
All	2,014	1,992	2,086	2,249	2,320	2,224	2,301	2,219	2,261	2,388	2,289.3	2,278.6	2,205.4	8%
<b>BUSINESS, COLLEGE OF</b>														
Bachelors	779	900	838	824	786	785	776	829	939	1,026	931.3	871.0	848.2	21%
Grad. Certif.	9	15	27	23	21	24	25	19	38	108	55.0	42.8	30.9	250%
Masters	204	237	220	217	231	229	242	222	241	223	228.7	231.4	226.6	-2%
Doctorate	6	4	6	10	8	8	5	11	6	6	7.7	7.2	7.0	-14%
All	998	1,156	1,091	1,074	1,046	1,046	1,048	1,081	1,224	1,363	1,222.7	1,152.4	1,112.7	22%
<b>EDUCATION, COLLEGE OF</b>														
Bachelors	246	239	246	274	284	305	280	307	227	245	259.7	272.8	265.3	-8%
Masters	485	502	495	532	464	418	464	457	480	416	451.0	447.0	471.3	-12%
Ed. Specialist	57	59	53	43	63	65	82	51	56	40	49.0	58.8	56.9	-30%
Doctorate	87	74	84	79	117	73	83	74	102	88	88.0	84.0	86.1	2%
All	875	874	878	928	928	861	909	889	865	789	847.7	862.6	879.6	-10%
<b>ENGINEERING, COLLEGE OF</b>														
Bachelors	386	398	422	518	472	490	596	693	629	696	672.7	620.8	530.0	31%
Masters	90	78	109	100	120	131	165	136	157	144	145.7	146.6	123.0	17%
Doctorate	24	24	44	32	32	43	37	36	46	53	45.0	43.0	37.1	43%
All	500	500	575	650	624	664	798	865	832	893	863.3	810.4	690.1	29%
<b>HEALTH PROFESSIONS, SCHOOL OF</b>														
Bachelors	155	176	242	345	426	549	600	702	730	710	714.0	658.2	463.5	53%
Masters	82	48	40	55	51	58	60	54	66	135	85.0	74.6	64.9	108%
Doctorate	0	36	43	38	45	43	44	45	58	56	53.0	49.2	40.8	37%
All	237	260	325	438	522	650	704	801	854	901	852.0	782.0	569.2	58%

**Table 2.1: Degrees and Certificates Awarded by Colleges at the University of Missouri–Columbia (continued)**

COLLEGE/DEGREE	FY 2009	FY 2010	FY 2011	FY 2012	FY 2013	FY 2014	FY 2015	FY 2016	FY 2017	FY 2018	3-Year	Average 5-Year	10-Year	Change i relative 10-Year
<b>HUMAN ENVIRONMENTAL SCIENCES, COLLEGE OF</b>														
Bachelors	298	274	275	279	309	318	269	282	336	323	313.7	305.6	296.3	9%
Masters	35	17	30	34	28	26	41	38	36	32	35.3	34.6	31.7	1%
Doctorate	9	8	12	7	9	11	20	12	13	13	12.7	13.8	11.4	14%
All	342	299	317	320	346	355	330	332	385	368	361.7	354.0	339.4	8%
<b>JOURNALISM, SCHOOL OF</b>														
Bachelors	520	521	510	534	504	520	483	549	545	540	544.7	527.4	522.6	3%
Masters	107	112	88	111	73	91	67	103	80	94	92.3	87.0	92.6	2%
Doctorate	9	8	12	10	8	6	8	7	5	13	8.3	7.8	8.6	51%
All	636	641	610	655	585	617	558	659	630	647	645.3	622.2	623.8	4%
<b>LAW, SCHOOL OF</b>														
Grad. Certif.	16	37	39	26	41	25	21	20	16	24	20.0	21.2	26.5	-9%
First Profes.	152	141	144	142	133	132	132	114	101	94	103.0	114.6	128.5	-27%
Masters	13	7	19	8	14	8	12	7	6	3	5.3	7.2	9.7	-69%
All	181	185	202	176	188	165	165	141	123	121	128.3	143.0	164.7	-27%
<b>MEDICINE, SCHOOL OF</b>														
First Profes.	85	99	93	87	98	97	99	87	99	98	94.7	96.0	94.2	4%
Masters	36	41	48	51	42	56	43	65	57	75	65.7	59.2	51.4	46%
Doctorate	10	11	7	14	13	5	9	8	10	10	9.3	8.4	9.7	3%
All	131	151	148	152	153	158	151	160	166	183	169.7	163.6	155.3	18%
<b>NATURAL RESOURCES, SCHOOL OF</b>														
Bachelors	115	96	107	113	121	190	265	232	199	189	206.7	215.0	162.7	16%
Masters	20	21	26	28	22	30	21	40	43	21	34.7	31.0	27.2	-23%
Doctorate	7	5	7	8	10	3	5	7	13	4	8.0	6.4	6.9	-42%
All	142	122	140	149	153	223	291	279	255	214	249.3	252.4	196.8	9%
<b>NURSING, SCHOOL OF</b>														
Bachelors	190	190	193	211	211	217	232	198	203	206	202.3	211.2	205.1	0%
Masters	50	60	43	43	42	36	29	20	11	15	15.3	22.2	34.9	-57%
Doctorate	5	3	4	4	2	25	31	38	57	53	49.3	40.8	22.2	139%
All	245	253	240	258	255	278	292	256	271	274	267.0	274.2	262.2	5%

**Table 2.1: Degrees and Certificates Awarded by Colleges at the University of Missouri–Columbia (continued)**

COLLEGE/DEGREE	FY 2009	FY 2010	FY 2011	FY 2012	FY 2013	FY 2014	FY 2015	FY 2016	FY 2017	FY 2018	3-Year	Average 5-Year	10-Year	Change in FY18 relative to the 10-Year Avg.
<b>PUBLIC AFFAIRS, SCHOOL OF</b>														
Masters						60	52	63	86		N/A	N/A	N/A	
Doctorate						2	2	1	3		N/A	N/A	N/A	
All						62	54	64	89		N/A	N/A	N/A	
<b>SOCIAL WORK, SCHOOL OF</b>														
Bachelors	34	42	42	37	42	33	40	50	32	36	39.3	38.2	38.8	-7%
Masters	64	129	51	97	87	70	71	76	91	75	80.7	76.6	81.1	-8%
Doctorate	9	4	3	2	1	3	2	3	2	2	2.3	2.4	3.1	-35%
All	107	175	96	136	130	106	113	129	125	113	122.3	117.2	123.0	-8%
<b>VETERINARY MEDICINE, COLLEGE OF</b>														
First Profes.	70	64	69	70	101	110	115	107	113	110	110.0	111.0	92.9	18%
Masters	8	7	8	9	5	9	5	8	10	11	9.7	8.6	8.0	38%
Doctorate	2	1	5	2	2	3	0	2	5	0	2.3	2.0	2.2	-100%
All	80	72	82	81	108	122	120	117	128	121	122.0	121.6	103.1	17%
<b>GRADUATE STUDIES</b>														
Grad. Certif.	63	90	96	130	163	177	193	186	212	230	209.3	199.6	154.0	49%
Masters	85	74	115	126	124	81	64	85	94	22	67.0	69.2	87.0	-75%
Doctorate	9	12	13	18	24	17	15	20	20	19	19.7	18.2	16.7	14%
All	157	176	224	274	311	275	272	291	326	271	296.0	287.0	257.7	5%

In FY 2014, Public Affairs moved from Graduate Studies.

In FY 2018, Public Affairs moved to Arts & Sciences.



**Table 2.2: Degrees and Certificates Awarded by Colleges at the University of Missouri–Kansas City**

COLLEGE/DEGREE	FY	FY	FY	FY	FY	FY	FY	FY	FY	FY	Average			Change relative 10-Year	
	2009	2010	2011	2012	2013	2014	2015	2016	2017	2018	3-Year	5-Year	10-Year		
<b>ARTS AND SCIENCES, COLLEGE OF</b>															
U-Grad. Certif.								7	6	11	24	13.7	N/A	N/A	
Bachelors	829	931	813	934	877	895	844	766	872	784	807.3	832.2	854.5	-8%	
Grad. Certif.	0	0	0	1	1	3	6	15	2	6	7.7	6.4	3.4	76%	
Masters	187	173	210	252	184	227	228	211	189	184	194.7	207.8	204.5	-10%	
Doctorate	4	4	2	3	2	7	3	3	5	4	4.0	4.4	3.7	8%	
All	1,020	1,108	1,025	1,190	1,064	1,132	1,088	1,001	1,079	1,002	1,027.3	1,060.4	1,070.9	-6%	
<b>BIOLOGICAL SCIENCES, SCHOOL OF</b>															
Bachelors	61	84	71	95	101	99	86	87	101	127	105.0	100.0	91.2	39%	
Masters	20	23	21	26	26	24	22	12	12	6	10.0	15.2	19.2	-69%	
All	81	107	92	121	127	123	108	99	113	133	115.0	115.2	110.4	20%	
<b>COMPUTING AND ENGINEERING, SCHOOL OF</b>															
Bachelors	86	95	82	103	118	105	124	163	178	164	168.3	146.8	121.8	35%	
Grad. Certif.					1	2	3	2	1	2	1.7	2.0	N/A		
Masters	144	135	194	121	122	124	274	446	391	307	381.3	308.4	225.8	36%	
All	230	230	276	224	241	231	401	611	570	473	551.3	457.2	348.7	36%	
<b>DENTISTRY, SCHOOL OF</b>															
Bachelors	27	31	34	35	36	30	34	30	35	33	32.7	32.4	32.5	2%	
Grad. Certif.	17	17	17	17	17	17	17	17	17	12	15.3	16.0	16.5	-27%	
First Profes.	102	96	98	99	106	103	104	105	105	114	108.0	106.2	103.2	10%	
Masters	9	7	9	9	10	4	7	6	5	10	7.0	6.4	7.6	32%	
All	155	151	158	160	169	154	162	158	162	169	163.0	161.0	159.8	6%	
<b>EDUCATION, SCHOOL OF</b>															
Bachelors	118	116	107	113	108	112	87	66	53	40	53.0	71.6	92.0	-57%	
Grad. Certif.				0	0	3	4	18	2	2	7.3	5.8	N/A		
Masters	184	152	131	144	156	152	175	152	122	85	119.7	137.2	145.3	-42%	
Ed. Specialist	49	33	25	35	24	35	26	32	20	18	23.3	26.2	29.7	-39%	
Doctorate	9	5	4	13	9	21	11	13	8	11	10.7	12.8	10.4	6%	
All	360	306	267	305	297	323	303	281	205	156	214.0	253.6	280.3	-44%	

Table 2.2: Degrees and Certificates Awarded by Colleges at the University of Missouri–Kansas City (continued)

COLLEGE/DEGREE	FY	FY	FY	FY	FY	FY	FY	FY	FY	FY	Average			Change in FY18 relative to the 10-Year Avg.
	2009	2010	2011	2012	2013	2014	2015	2016	2017	2018	3-Year	5-Year	10-Year	
<b>GRADUATE STUDIES, SCHOOL OF</b>														
Grad. Certif.	1	0	2	5	2	2	5	9	9	13	10.3	7.6	4.8	171%
Doctorate	24	32	31	42	45	55	47	48	47	39	44.7	47.2	41.0	-5%
All	25	32	33	47	47	57	52	57	56	52	55.0	54.8	45.8	14%
<b>LAW, SCHOOL OF</b>														
First Profes.	153	156	156	150	159	141	141	159	141	131	143.7	142.6	148.7	-12%
Masters	32	32	30	18	33	29	29	25	21	22	22.7	25.2	27.1	-19%
All	185	188	186	168	192	170	170	184	162	153	166.3	167.8	175.8	-13%
<b>MANAGEMENT, SCHOOL OF</b>														
Bachelors	195	192	207	228	231	276	315	307	303	321	310.3	304.4	257.5	25%
Grad. Certif.					0	0	2	3	3	4	3.3	2.4	N/A	
Masters	240	254	257	276	263	292	288	248	237	204	229.7	253.8	255.9	-20%
Doctorate				0	1	1	0	2	2	1	1.7	1.2	N/A	
All	435	446	464	504	495	569	605	560	545	530	545.0	561.8	515.3	3%
<b>MEDICINE, SCHOOL OF</b>														
Grad. Certif.	0	0	0	1	5	0	6	6	11	3	6.7	5.2	3.2	
First Profes.	87	92	101	89	88	90	119	94	103	110	102.3	103.2	97.3	13%
Masters	0	4	4	7	12	21	22	37	46	41	41.3	33.4	19.4	111%
All	87	96	105	97	105	111	147	137	160	154	150.3	141.8	119.9	28%
<b>MUSIC AND DANCE, CONSERVATORY OF</b>														
Bachelors	70	70	47	65	64	43	62	52	56	46	51.3	51.8	57.5	-20%
Grad. Certif.	2	1	5	5	7	6	7	1	3	10	4.7	5.4	4.7	113%
Masters	43	56	38	39	42	25	36	49	27	51	42.3	37.6	40.6	26%
Doctorate	21	20	21	16	21	18	14	26	20	20	22.0	19.6	18.9	6%
All	136	147	111	125	134	92	119	128	106	127	120.3	114.4	122.5	4%
<b>NURSING AND HEALTH STUDIES, SCHOOL OF</b>														
Bachelors	102	107	148	167	217	239	260	270	226	238	244.7	246.6	197.4	21%
Grad. Certif.										2	N/A	N/A	N/A	
Masters	57	74	78	107	106	130	116	27	32	52	37.0	71.4	77.9	-33%
Doctorate	10	22	19	25	15	14	23	28	40	39	35.7	28.8	23.5	66%
All	169	203	245	299	338	383	399	325	298	331	318.0	347.2	299.0	11%

**Table 2.2: Degrees and Certificates Awarded by Colleges at the University of Missouri–Kansas City (continued)**

COLLEGE/DEGREE	FY	FY	FY	FY	FY	FY	FY	FY	FY	FY	3-Year	<u>Average</u>			Change in FY18 relative to the 10-Year Avg.
	2009	2010	2011	2012	2013	2014	2015	2016	2017	2018		5-Year	10-Year		
<b>PHARMACY, SCHOOL OF</b>															
Bachelors	8	7	14	9	7	4					N/A	N/A	N/A		
First Profes.	70	111	113	106	122	125	125	122	124	136	127.3	126.4	115.4	18%	
Masters	1	1	0	0							N/A	N/A	N/A		
All	79	119	127	115	129	129	125	122	124	136	127.3	127.2	120.5	13%	

UM-IR/RS 8/18

**Table 2.3: Degrees and Certificates Awarded by Colleges at the Missouri University of Science and Technology**

COLLEGE/DEGREE	FY	FY	FY	FY	FY	FY	FY	FY	FY	FY	Average	Change in FY18 relative to the 10-Year Avg.	
	2009	2010	2011	2012	2013	2014	2015	2016	2017	2018			3-Year
<b>ARTS, SCIENCES, AND BUSINESS, COLLEGE OF</b>													
U-Grad. Certif.										1	N/A	N/A	N/A
Bachelors							292	287	259	219	255.0	N/A	N/A
Grad. Certif.							39	43	62	70	58.3	N/A	N/A
Masters							88	90	80	80	83.3	N/A	N/A
Doctorate							16	24	17	25	22.0	N/A	N/A
All							435	444	418	395	419.0	N/A	N/A
<b>ENGINEERING AND COMPUTING, COLLEGE OF</b>													
U-Grad. Certif.							14	9	8	6	7.7	N/A	N/A
Bachelors							1,015	1,091	1,061	1,197	1,116.3	N/A	N/A
Grad. Certif.							365	384	370	440	398.0	N/A	N/A
Masters							587	598	545	533	558.7	N/A	N/A
Doctorate							79	85	71	91	82.3	N/A	N/A
All							2,060	2,167	2,055	2,267	2,163.0	N/A	N/A

In FY 2008, Missouri University of Science and Technology (formally University of Missouri-Rolla) eliminated the positions of College/School Dean.  
 In FY 2015, the positions of College/School Dean were reestablished.

UM-IR/RS 8/18

**Table 2.4: Degrees and Certificates Awarded by Colleges at the University of Missouri–St. Louis**

COLLEGE/DEGREE	FY	FY	FY	FY	FY	FY	FY	FY	FY	FY	3-Year	Average			Change in FY18 relative to the 10-Year Avg.
	2009	2010	2011	2012	2013	2014	2015	2016	2017	2018		5-Year	10-Year		
<b>ARTS AND SCIENCES, COLLEGE OF</b>															
U-Grad. Certif.					2	20	33	29	36	35	33.3	30.6	N/A		
Bachelors	749	763	772	763	791	792	913	924	927	923	924.7	895.8	831.7	11%	
Grad. Certif.	30	35	20	30	27	9	23	15	17	10	14.0	14.8	21.6	-54%	
Masters	215	241	241	243	237	210	199	196	181	187	188.0	194.6	215.0	-13%	
Doctorate	34	35	24	33	29	36	32	29	35	39	34.3	34.2	32.6	20%	
All	1,028	1,074	1,057	1,069	1,086	1,067	1,200	1,193	1,196	1,194	1,194.3	1,170.0	1,116.4	7%	
<b>BUSINESS ADMINISTRATION, COLLEGE OF</b>															
U-Grad. Certif.								0	1	0	0.3	N/A	N/A		
Bachelors	573	545	579	505	440	507	516	524	523	534	527.0	520.8	524.6	2%	
Grad. Certif.	12	11	13	19	7	16	20	29	35	38	34.0	27.6	20.0	90%	
Masters	210	162	171	204	189	185	169	174	226	206	202.0	192.0	189.6	9%	
Doctorate	0	2	1	2	0	0	8	3	1	1	1.7	2.6	1.8	-44%	
All	795	720	764	730	636	708	713	730	786	779	765.0	743.2	736.1	6%	
<b>EDUCATION, COLLEGE OF</b>															
Bachelors	271	229	256	223	234	205	198	187	212	145	181.3	189.4	216.0	-33%	
Grad. Certif.	4	5	10	21	21	25	23	36	38	33	35.7	31.0	21.6	53%	
Masters	262	287	340	301	336	370	308	323	282	276	293.7	311.8	308.5	-11%	
Ed. Specialist	42	31	22	26	28	13	14	17	17	9	14.3	14.0	21.9	-59%	
Doctorate	27	24	21	33	24	21	34	38	62	42	47.3	39.4	32.6	29%	
All	606	576	649	604	643	634	577	601	611	505	572.3	585.6	600.6	-16%	
<b>FINE ARTS AND COMMUNICATION, COLLEGE OF</b>															
U-Grad. Certif.					0	0	1	0			N/A	N/A	N/A		
Bachelors	188	214	223	207	225	218	247	241			N/A	N/A	N/A		
Masters	14	22	17	28	4	14	12	13			N/A	N/A	N/A		
All	202	236	240	235	229	232	260	254			N/A	N/A	N/A		
<b>NURSING, COLLEGE OF</b>															
Bachelors	181	200	201	206	224	246	284	253	250	237	246.7	254.0	228.2	4%	
Grad. Certif.	1	1	4	2	2	4	2	1	2	10	4.3	3.8	2.9	245%	
Masters	43	41	72	63	79	52	55	53	67	89	69.7	63.2	61.4	45%	
Doctorate	2	2	4	6	7	7	9	5	8	5	6.0	6.8	5.5	-9%	
All	227	244	281	277	312	309	350	312	327	341	326.7	327.8	298.0	14%	

**Table 2.4: Degrees and Certificates Awarded by Colleges at the University of Missouri–St. Louis (continued)**

COLLEGE/DEGREE	FY	FY	FY	FY	FY	FY	FY	FY	FY	FY	3-Year	<u>Average</u>			Change in FY18 relative to the 10-Year Avg.
	2009	2010	2011	2012	2013	2014	2015	2016	2017	2018		5-Year	10-Year		
<b>OPTOMETRY, COLLEGE OF</b>															
First Profes.	44	41	44	47	40	39	41	45	43	39	42.3	41.4	42.3	-8%	
Masters	1	2	1	0	1	1					N/A	N/A	N/A		
Doctorate	0	0	0	0	1	0	1				N/A	N/A	N/A		
All	45	43	45	47	42	40	42	45	43	39	42.3	41.8	43.1	-10%	
<b>SOCIAL WORK, SCHOOL OF</b>															
Bachelors								25	76	90	63.7	N/A	N/A		
Masters								33	54	52	46.3	N/A	N/A		
All								58	130	142	110.0	N/A	N/A		
<b>ENGINEERING PROGRAM</b>															
Bachelors	52	56	58	58	58	51	88	97	83	59	79.7	75.6	66.0	-11%	
<b>GRADUATE SCHOOL</b>															
Bachelors	4	4	3	1	2	1	0	1	0	0	0.3	0.4	1.6	-100%	
Grad. Certif.	33	30	24	24	31	26	19	35	31	30	32.0	28.2	28.3	6%	
Masters	26	16	26	33	25	22	18	18	16	9	14.3	16.6	20.9	-57%	
All	63	50	53	58	58	49	37	54	47	39	46.7	45.2	50.8	-23%	

In FY 2016, Social Work moved from Arts & Sciences.

In FY 2017, Fine Arts & Communication moved to Arts & Sciences.

UM-IR/RS 8/18