

**ENROLLMENT SUMMARY REPORT  
FALL 2015**

Dr. La Shonda Carter-Boone  
Senior Research Analyst

Institutional Research  
714 Lewis Hall  
University of Missouri System

November 2015

IR&P 2015, Report 3

<http://www.umsystem.edu/ums/aa/planning//>

## FALL 2015 ENROLLMENT SUMMARY

### Executive Summary

This report summarizes the status and trends in fall enrollment at the University of Missouri's four campuses. The report includes information about enrollment, full-time equivalence, new students on campus, undergraduate transfer students, full/part-time status, gender and ethnicity information.

Please note that enrollment totals in this report follow federal and state guidelines, which recommend that students who are classified as "exclusive auditors" are not included in enrollment figures. Consequently, students who are classified as "exclusive auditors" are not included in the campus totals. (Exclusive auditors are defined as students who are enrolled exclusively in courses that are not taken for credit.)

### Highlights of the report include:

- The University of Missouri System enrolled a record 77,773 students in Fall 2015, 450 more students than the record 77,283 students that enrolled in Fall 2014. Total enrollment at the University has increased by 22% over the past 10 years (Table 1).
- In Fall 2015, the University of Missouri System enrolled 59,418 undergraduate students (76% of total headcount), 3,131 first professional students (4%), and 15,184 graduate students (20%) (Table 1).
- Over the past 10 years, undergraduate headcount has increased by 24%, first-professional headcount by 12% and graduate headcount by 15% (Table 1).
- Since 2011, total student credit hours and total full-time equivalence have both increased by 5% (Table 2.0).
- Over the past five years, total full-time resident headcount has decreased by 2% (Table 4.0a) and total full-time non-resident headcount has increased 25% (Table 4.0b).
- Women comprised 51% of total enrollment in Fall 2015. UM-St. Louis had the largest percentage of women (60%) and MO S&T had the highest proportion of men (77%) (Table 5).
- Of all the students of known ethnicity, under-represented minorities (American Indian/Alaskan Native, African-American, and Hispanic) represented 13% of the University of Missouri System's total enrollment (Table 5).

## Technical Notes

These tables provide counts of students enrolled in the fall of 2015 on-schedule credit courses at the four campuses of the University of Missouri. Five and ten-year trend data are included in the tables for comparison purposes. The data used in this report were generated from the EMSAS Fall Enrollment files, which are submitted to the Missouri Department of Higher Education (MDHE) each fall. Data included in EMSAS files were prepared in the admissions and registration offices at the respective campuses. The data are counts as of the census date at each campus, which is defined as the end of the fourth week of classes for the fall session. The source data are based on the reporting guidelines and definitions of the Missouri Department of Higher Education (MDHE) and the National Center for Educational Statistics (NCES).

Tables in the Table 2 series (2.0-2.4) include counts of on- and off-campus students. The columns titled “On-Campus”, according to the MDHE guidelines, include students enrolled geographically on campus and students in the Graduate Engineering (Residence) Centers. All other students are counted in the columns headed “Off-Campus”, which include students enrolled in extension courses and students that receive H.S. advanced credit from the Kansas City and St. Louis campuses. The tables of the Table 2 series also include full-time equivalence (FTE) counts.

Tables in the Table 4 series (4.0a-4.4b) include counts of resident and non-resident students by level and course load (full-time vs. part-time).

### Definitions of FTE:

Undergraduate FTE = Total Student Credit Hours/15

Graduate FTE = Total Student Credit Hours/12

Dentistry FTE = Headcount

Law FTE = Total Student Credit Hours/15

UMC Medicine FTE = Headcount

UMKC Medicine FTE = Headcount

Optometry FTE = Headcount

Pharmacy FTE = Headcount

Vet Medicine FTE = Headcount

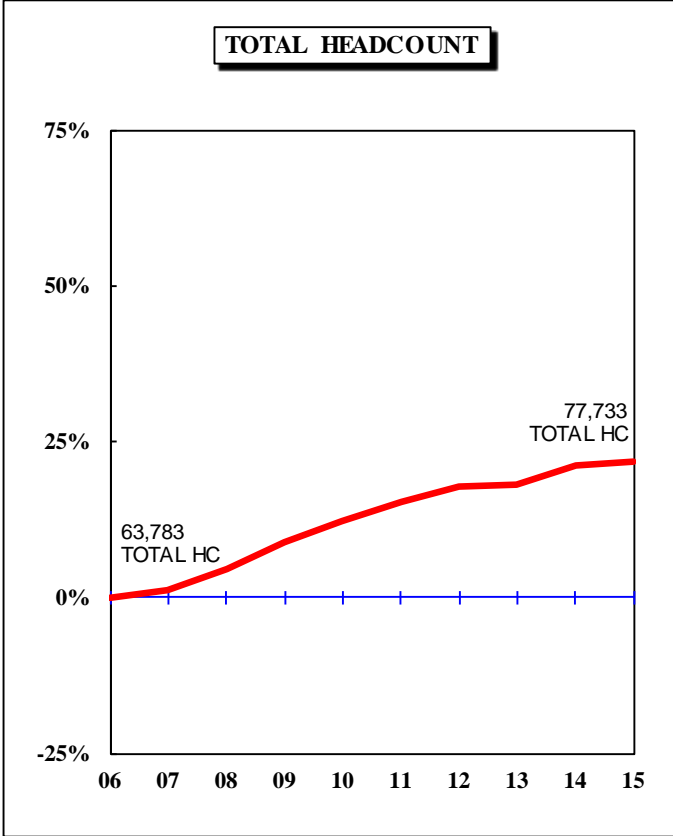
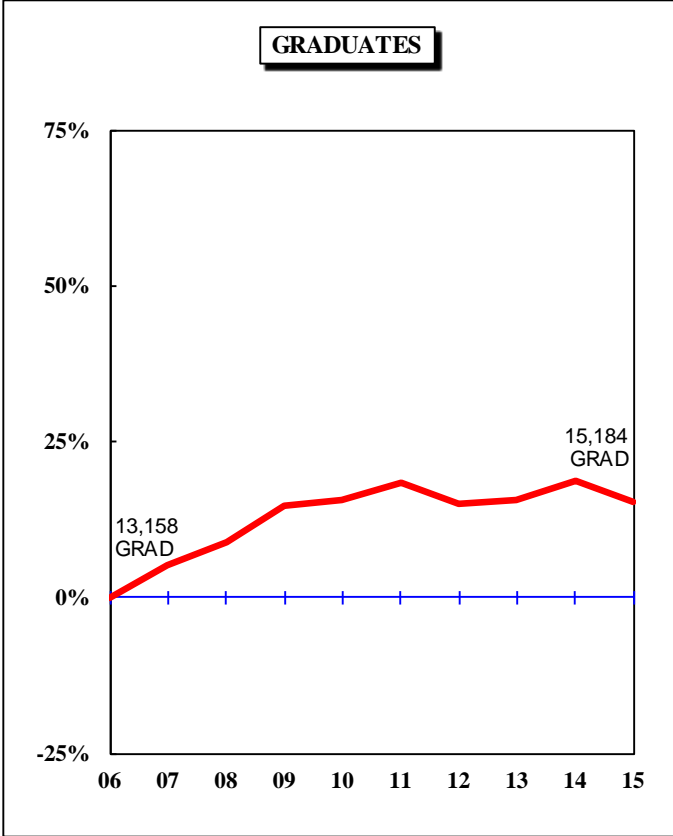
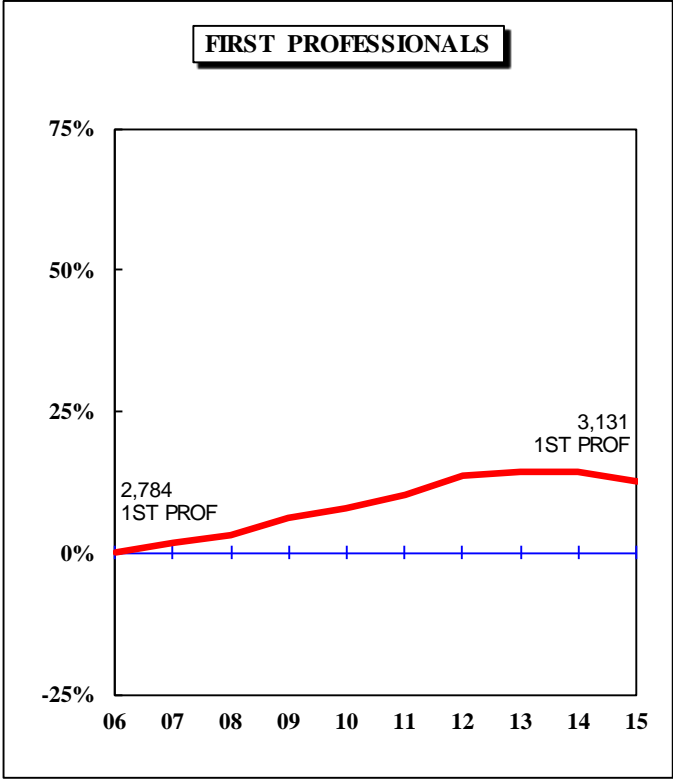
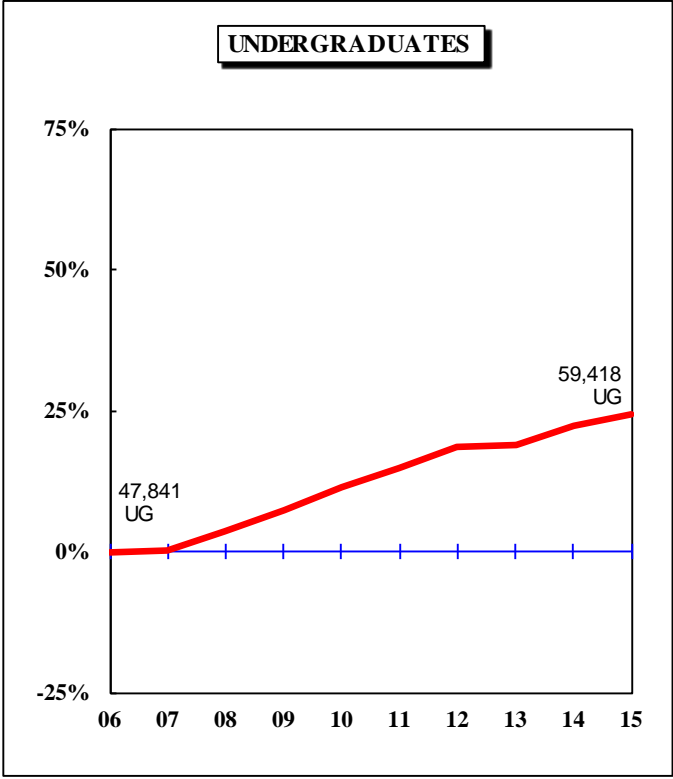
## Caveats

First- and second-year students in the Medicine MD program at UMKC are included in the undergraduate counts of the Table 2 and Table 4 series.

Enrollment counts for students in “Off-Schedule” courses, which include intersession courses, short courses, Video Credit courses, and other courses which begin and end on dates other than those for the regular academic semester, are accumulated during the term in which the courses began and are reported the semester following their end date.

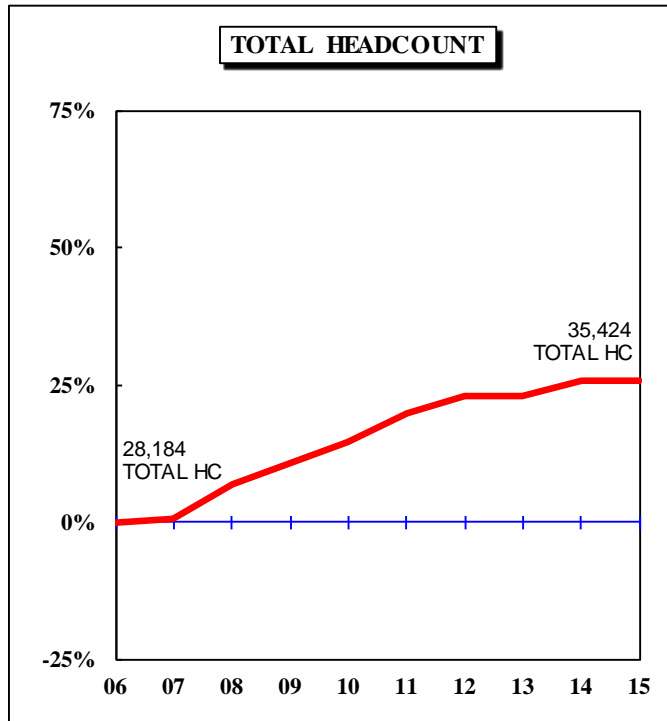
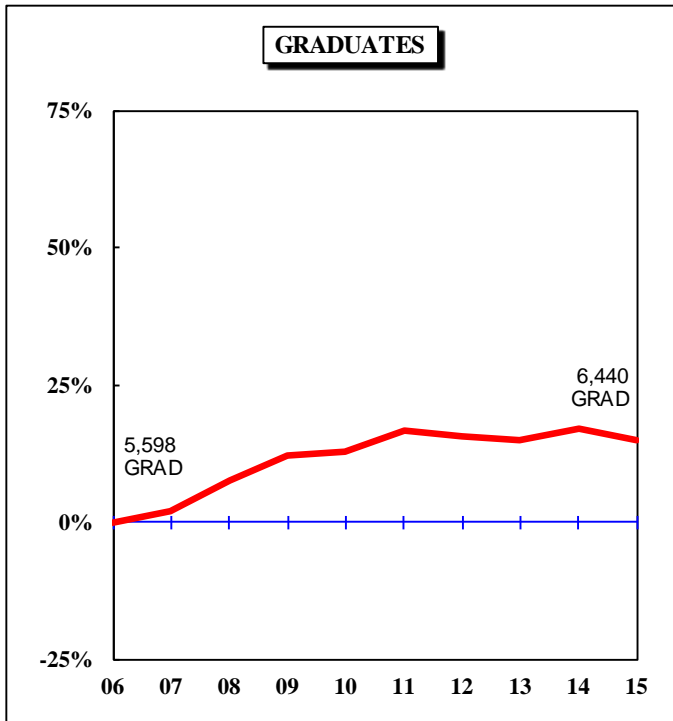
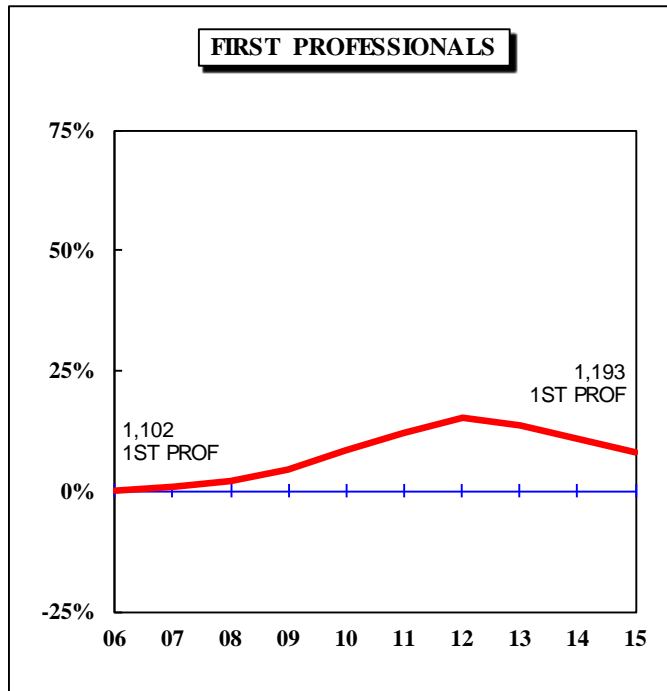
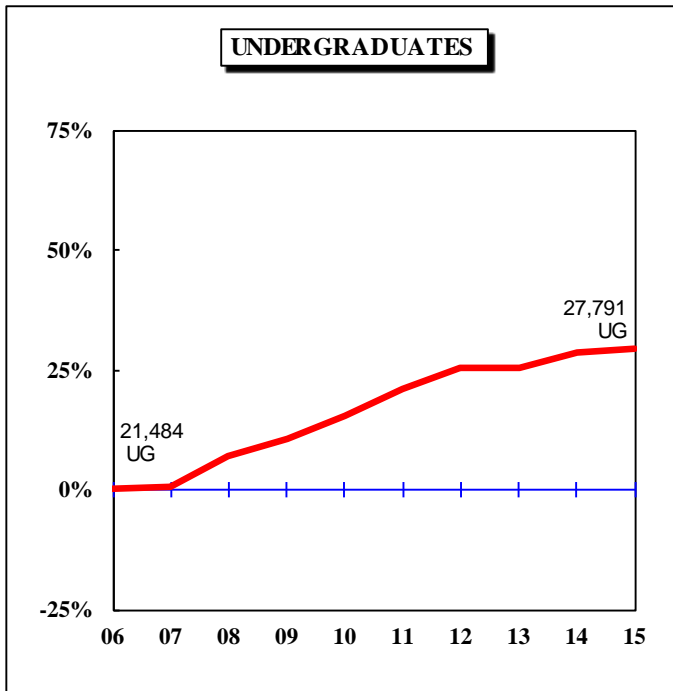
**Figure 1: Rate of Change in Fall Headcount by Student Level and Campus, Fall 2006 to Fall 2015**

**UNIVERSITY OF MISSOURI SYSTEM**



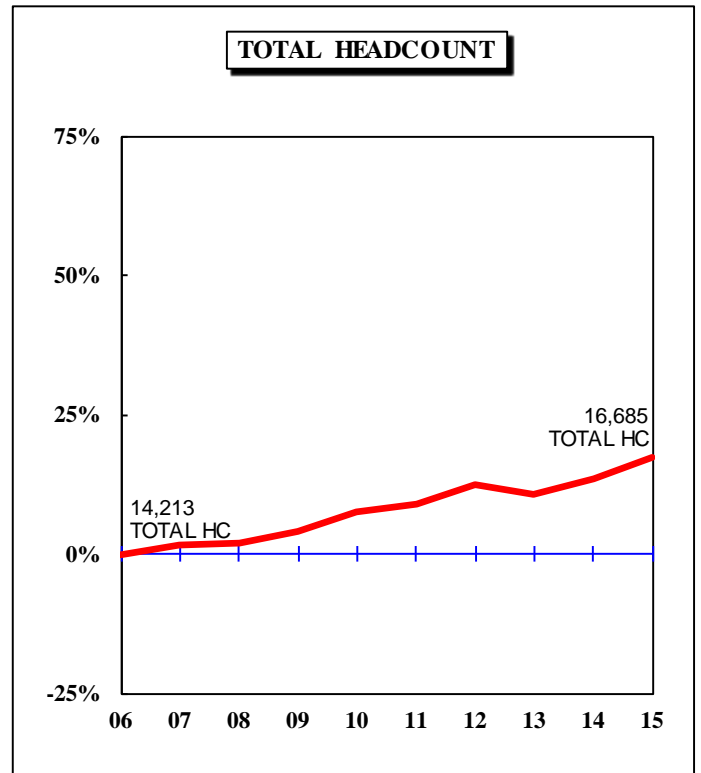
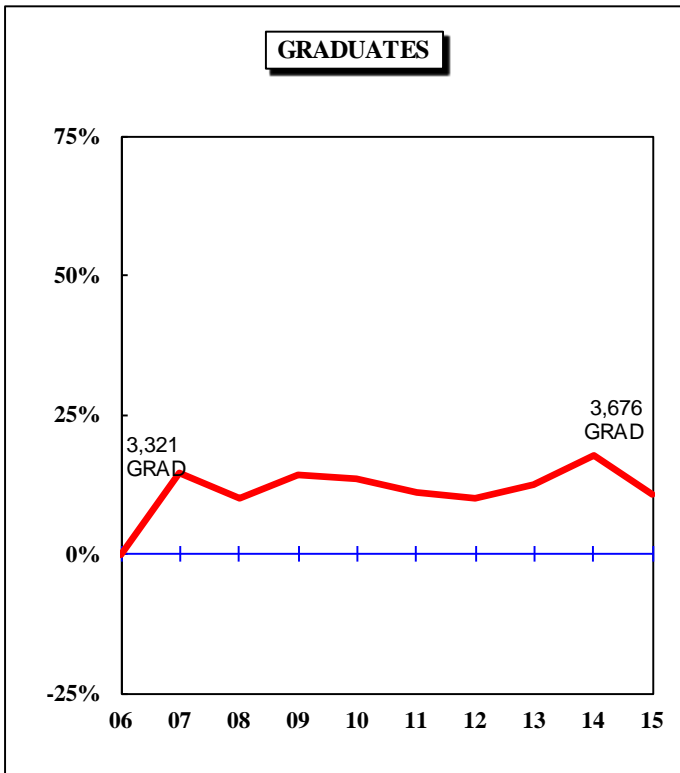
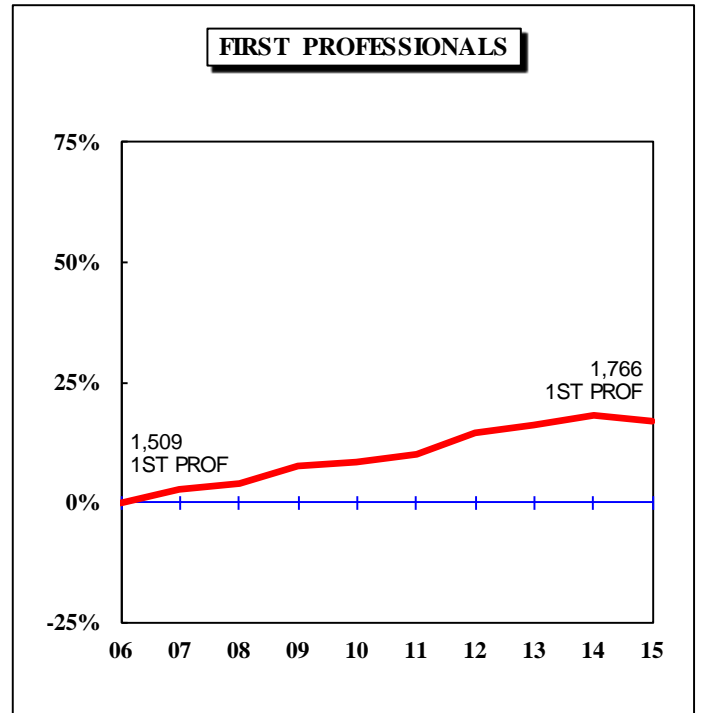
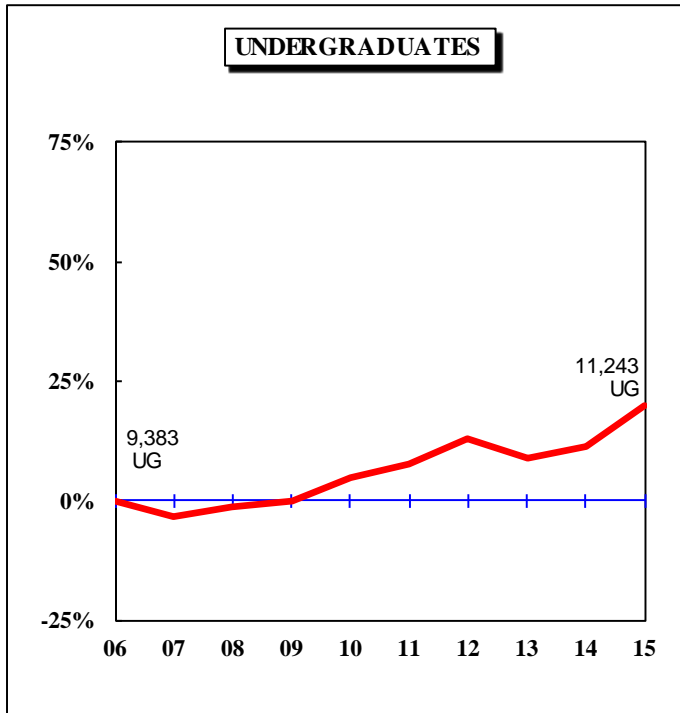
**Figure 1: Rate of Change in Fall Headcount by Student Level and Campus,  
Fall 2006 to Fall 2015**

**UNIVERSITY OF MISSOURI-COLUMBIA**

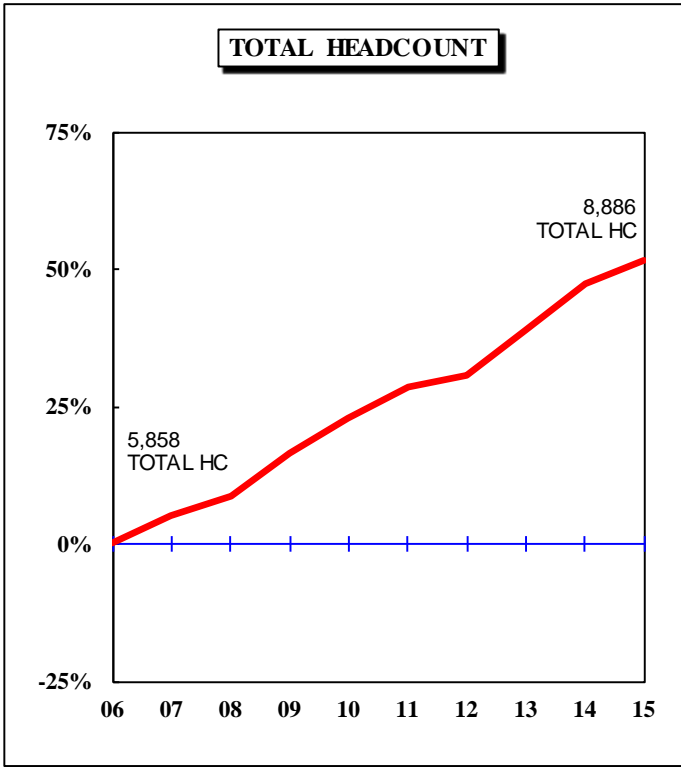
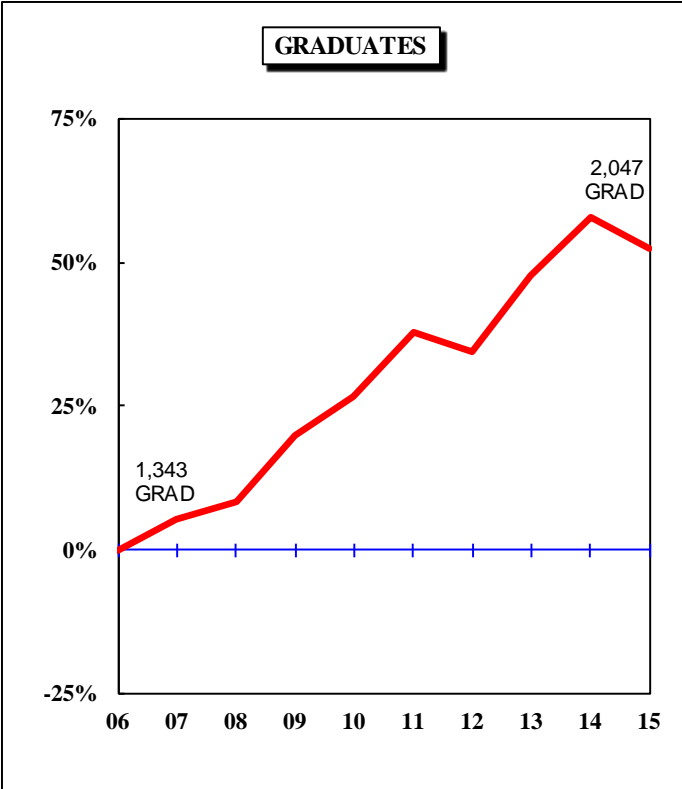
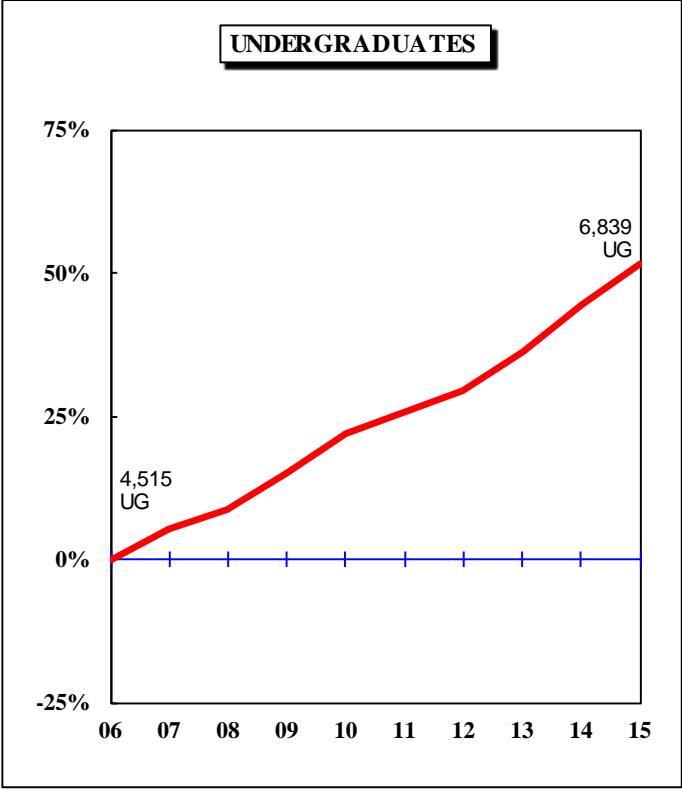


**Figure 1: Rate of Change in Fall Headcount by Student Level and Campus, Fall 2006 to Fall 2015**

**UNIVERSITY OF MISSOURI-KANSAS CITY**

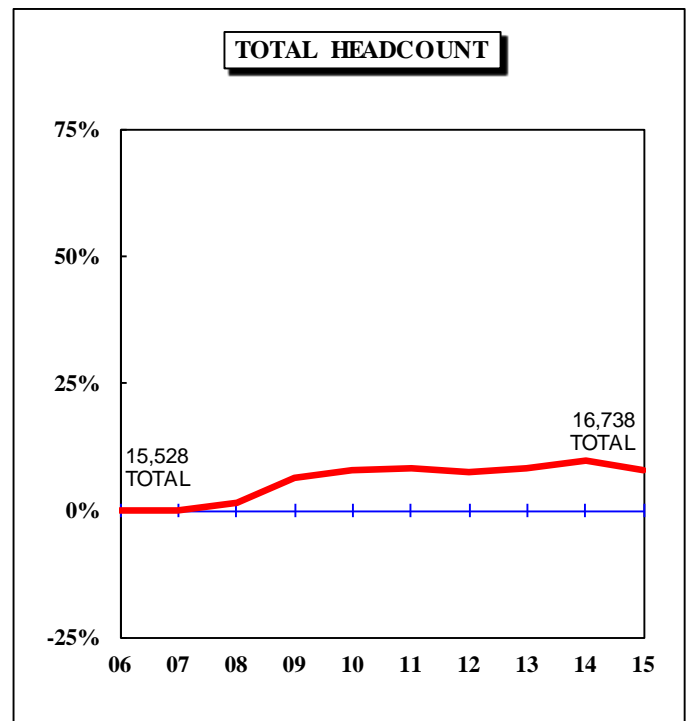
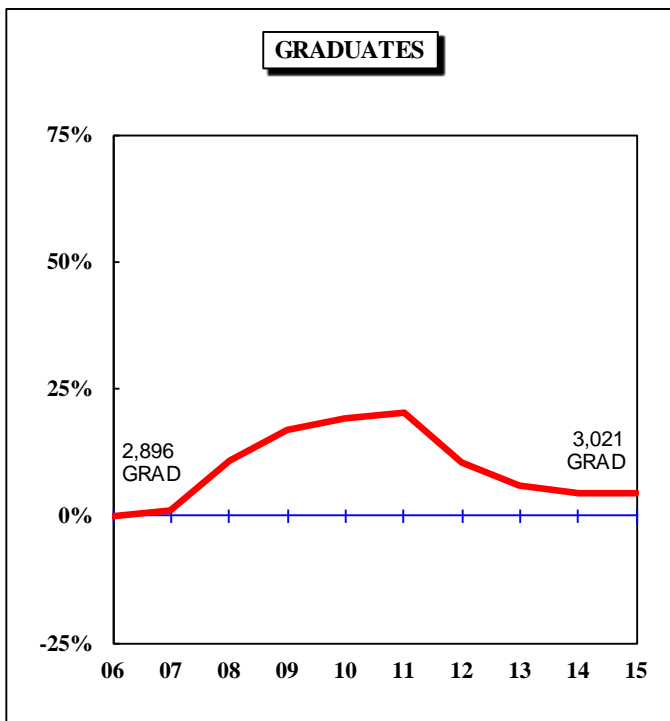
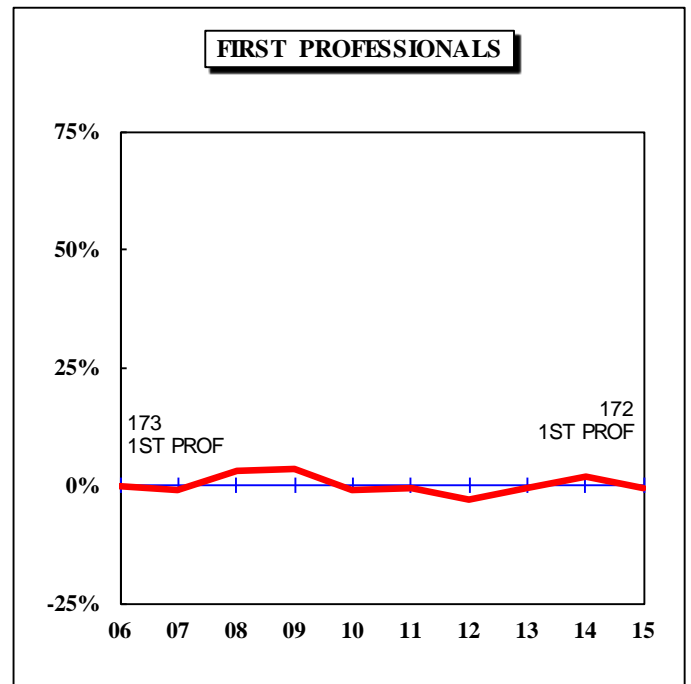
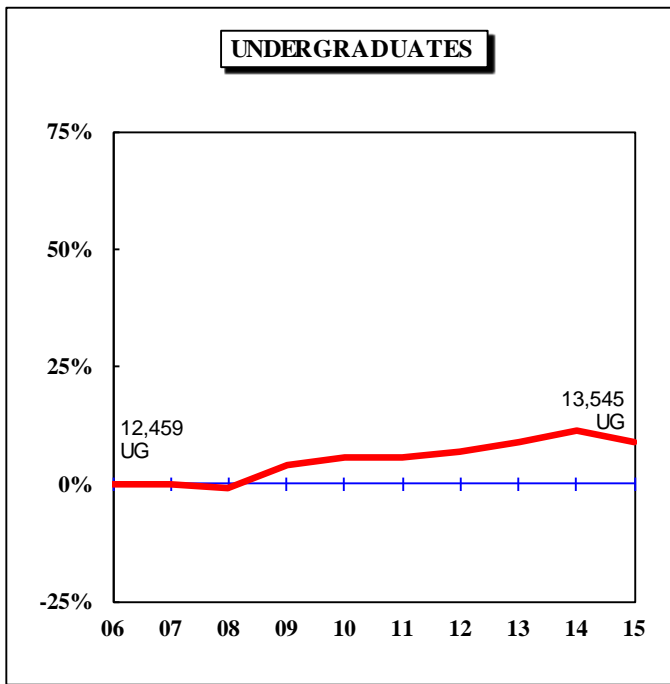


**Figure 1: Rate of Change in Fall Headcount by Student Level and Campus,  
Fall 2006 to Fall 2015**  
**MISSOURI S&T**



**Figure 1: Rate of Change in Fall Headcount by Student Level and Campus, Fall 2006 to Fall 2015**

**UNIVERSITY OF MISSOURI-ST. LOUIS**



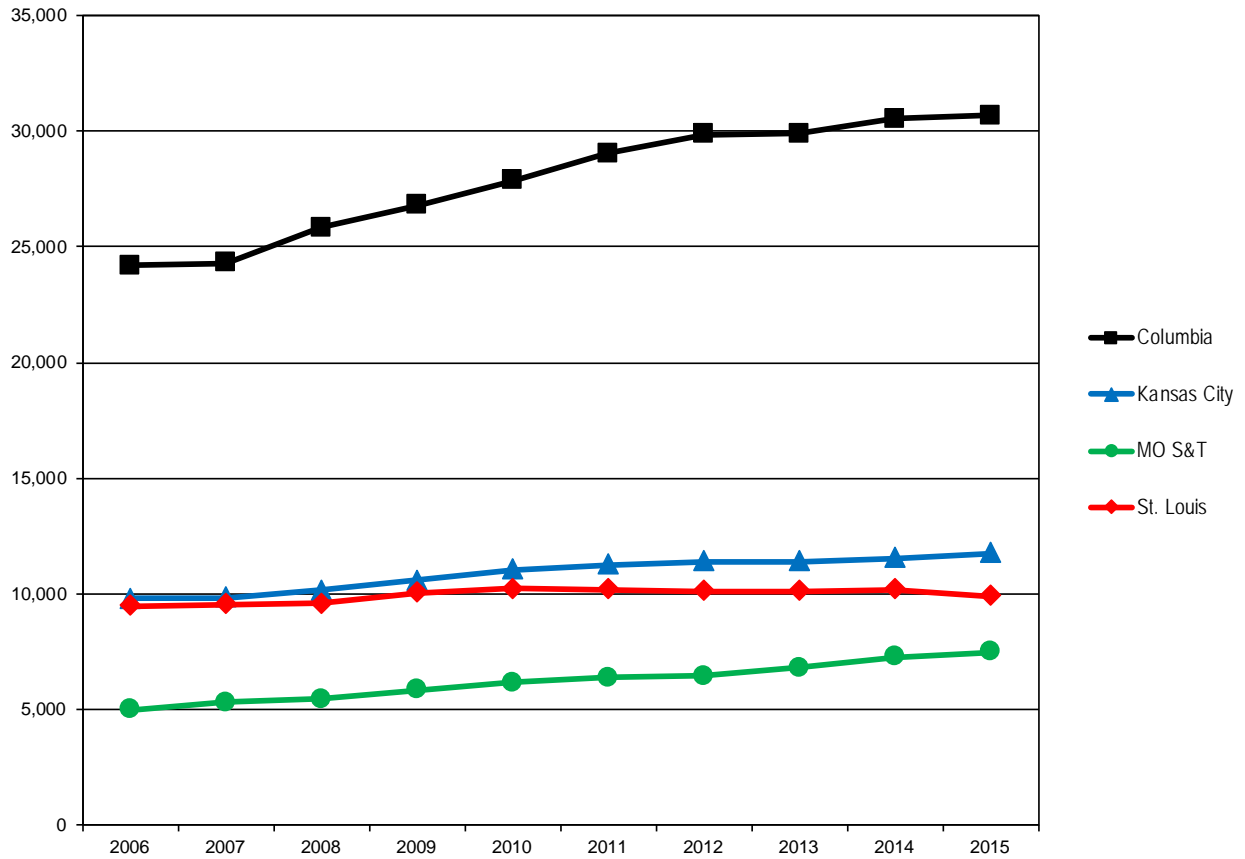


**Table 1. Headcount History by Student Level and Campus, Fall 2006 to Fall 2015**

<b>Campus</b>	<b>Level</b>	<b>2006</b>	<b>2007</b>	<b>2008</b>	<b>2009</b>	<b>2010</b>	<b>2011</b>	<b>2012</b>	<b>2013</b>	<b>2014</b>	<b>2015</b>	<b>10-yr. Change</b>
Columbia	Undergraduate	21,484	21,586	22,980	23,799	24,834	25,992	26,960	26,928	27,642	27,791	29%
	Professional	1,102	1,111	1,126	1,150	1,197	1,236	1,271	1,254	1,222	1,193	8%
	Graduate	5,598	5,708	6,024	6,288	6,310	6,534	6,473	6,434	6,561	6,440	15%
	Total	28,184	28,405	30,130	31,237	32,341	33,762	34,704	34,616	35,425	35,424	26%
Kansas City	Undergraduate	9,383	9,094	9,261	9,381	9,850	10,122	10,614	10,227	10,453	11,243	20%
	Professional	1,509	1,548	1,569	1,623	1,638	1,659	1,725	1,753	1,782	1,766	17%
	Graduate	3,321	3,800	3,651	3,795	3,771	3,692	3,651	3,738	3,911	3,676	11%
	Total*	14,213	14,442	14,481	14,799	15,259	15,473	15,990	15,718	16,146	16,685	17%
MO S&T	Undergraduate	4,515	4,752	4,911	5,206	5,503	5,671	5,841	6,145	6,520	6,839	51%
	Graduate	1,343	1,414	1,456	1,608	1,702	1,850	1,804	1,984	2,120	2,047	52%
	Total	5,858	6,166	6,367	6,814	7,205	7,521	7,645	8,129	8,640	8,886	52%
St. Louis	Undergraduate	12,459	12,432	12,358	12,966	13,171	13,151	13,335	13,569	13,874	13,545	9%
	Professional	173	171	178	179	171	172	168	172	176	172	-1%
	Graduate	2,896	2,924	3,205	3,389	3,449	3,486	3,202	3,068	3,022	3,021	4%
	Total*	15,528	15,527	15,741	16,534	16,791	16,809	16,705	16,809	17,072	16,738	8%
System	Undergraduate	47,841	47,864	49,510	51,352	53,358	54,936	56,750	56,869	58,489	59,418	24%
	Professional	2,784	2,830	2,873	2,952	3,006	3,067	3,164	3,179	3,180	3,131	12%
	Graduate	13,158	13,846	14,336	15,080	15,232	15,562	15,130	15,224	15,614	15,184	15%
	Grand Total	63,783	64,540	66,719	69,384	71,596	73,565	75,044	75,272	77,283	77,733	22%

\*The total enrollment for UMKC and UMSL include students taking college credit at their high school through dual credit programs. When these students are excluded from the headcount, the total enrollment for UMKC is 13,802 and the total enrollment for UMSL is 11,831.

**Figure 2. Full-time Equivalence History by Campus, 2006 to 2015**



Source: EMSAS Fall Enrollment file  
IR&P/LCB 10/22/15

**Full-time Equivalent History by Campus, 2006 to 2015**

Campus	2006	2007	2008	2009	2010	2011	2012	2013	2014	2015
Columbia	24,182.7	24,280.4	25,840.2	26,797.4	27,838.4	29,020.4	29,845.0	29,874.8	30,531.5	30,665.0
Kansas City	9,797.9	9,843.8	10,152.4	10,597.5	11,042.8	11,255.7	11,387.0	11,391.3	11,551.9	11,742.5
MO S&T	4,982.6	5,323.0	5,452.9	5,860.4	6,162.2	6,376.5	6,453.0	6,793.5	7,278.4	7,488.4
St. Louis	9,467.5	9,546.9	9,578.5	10,031.8	10,227.7	10,188.8	10,121.0	10,101.9	10,203.1	9,918.9
<b>Total</b>	<b>48,430.7</b>	<b>48,994.0</b>	<b>51,023.9</b>	<b>53,287.1</b>	<b>55,271.1</b>	<b>56,841.4</b>	<b>57,806.0</b>	<b>58,161.5</b>	<b>59,565.0</b>	<b>59,814.8</b>

(Totals may not add due to rounding.)

**Table 2.0 Headcounts, Full-time Equivalence, and Student Credit Hours by Location, Fall 2011 to Fall 2015**

University of Missouri System

	<u>On-Campus</u>					<u>Off-Campus</u>					<u>Total</u>					5-yr. Change
	FS11	FS12	FS13	FS14	FS15	FS11	FS12	FS13	FS14	FS15	FS11	FS12	FS13	FS14	FS15	
<b>Headcount by Student Level</b>																
<b>Undergraduate</b>																
Fresh & Soph DS	21,047	21,450	21,034	21,345	21,306	60	64	37	58	51	21,107	21,514	21,071	21,403	21,357	1%
Junior & Senior DS	27,168	27,723	28,354	28,895	28,612	505	532	461	459	423	27,673	28,255	28,815	29,354	29,035	5%
Nondegree	<u>926</u>	<u>1,038</u>	<u>1,050</u>	<u>1,191</u>	<u>1,124</u>	<u>5,230</u>	<u>5,943</u>	<u>5,933</u>	<u>6,541</u>	<u>7,902</u>	<u>6,156</u>	<u>6,981</u>	<u>6,983</u>	<u>7,732</u>	<u>9,026</u>	<u>47%</u>
Total Undergraduate	49,141	50,211	50,438	51,431	51,042	5,795	6,539	6,431	7,058	8,376	54,936	56,750	56,869	58,489	59,418	8%
<b>First Professional</b>																
Dentistry (DDS)	420	425	425	426	432	0	0	0	0	0	420	425	425	426	432	3%
Law (JD)	901	879	873	838	797	0	0	0	0	1	901	879	873	838	798	-11%
Medicine (MD)	798	818	822	844	824	0	0	1	0	0	798	818	823	844	824	3%
Optometry (OD)	172	168	172	176	172	0	0	0	0	0	172	168	172	176	172	0%
Pharmacy (DPharm)	283	328	328	373	396	80	93	96	65	51	363	421	424	438	447	23%
Vet. Med. (DVM)	<u>413</u>	<u>452</u>	<u>460</u>	<u>458</u>	<u>458</u>	<u>0</u>	<u>1</u>	<u>2</u>	<u>0</u>	<u>0</u>	<u>413</u>	<u>453</u>	<u>462</u>	<u>458</u>	<u>458</u>	<u>11%</u>
Total First Professional	2,987	3,070	3,080	3,115	3,079	80	94	99	65	52	3,067	3,164	3,179	3,180	3,131	2%
<b>Graduate</b>																
Masters & Ed. Spec.	7,975	7,629	7,610	7,711	7,493	2,330	2,240	2,365	2,464	2,368	10,305	9,869	9,975	10,175	9,861	-4%
Doctoral	4,011	3,876	3,980	4,094	4,131	251	366	442	469	534	4,262	4,242	4,422	4,563	4,665	9%
Postbacc					96										98	
Nondegree	<u>611</u>	<u>623</u>	<u>554</u>	<u>639</u>	<u>367</u>	<u>384</u>	<u>396</u>	<u>273</u>	<u>237</u>	<u>193</u>	<u>995</u>	<u>1,019</u>	<u>827</u>	<u>876</u>	<u>560</u>	<u>-44%</u>
Total Graduate	12,597	12,128	12,144	12,444	12,087	2,965	3,002	3,080	3,170	3,097	15,562	15,130	15,224	15,614	15,184	-2%
<b>Grand Total Headcount</b>	<b>64,725</b>	<b>65,409</b>	<b>65,662</b>	<b>66,990</b>	<b>66,208</b>	<b>8,840</b>	<b>9,635</b>	<b>9,610</b>	<b>10,293</b>	<b>11,525</b>	<b>73,565</b>	<b>75,044</b>	<b>75,272</b>	<b>77,283</b>	<b>77,733</b>	<b>6%</b>
<b>FTE Enrollments by Student Level</b>																
Undergraduate	42,909.4	43,873.0	44,067.6	45,044.8	44,957.0	2,030.7	2,234.1	2,265.8	2,398.0	2,883.2	44,940.1	46,107.1	46,333.4	47,442.8	47,840.2	6%
First Professional	2,945.4	3,028.6	3,034.1	3,071.7	3,035.4	80.0	94.0	99.0	65.0	51.1	3,025.4	3,122.6	3,133.1	3,136.7	3,086.5	2%
Graduate	<u>7,574.5</u>	<u>7,265.6</u>	<u>7,314.8</u>	<u>7,551.3</u>	<u>7,455.0</u>	<u>1,301.3</u>	<u>1,310.3</u>	<u>1,380.2</u>	<u>1,434.2</u>	<u>1,433.2</u>	<u>8,875.9</u>	<u>8,575.8</u>	<u>8,695.1</u>	<u>8,985.5</u>	<u>8,888.1</u>	<u>0%</u>
Total FTE	53,429.4	54,167.1	54,416.5	55,667.7	55,447.4	3,412.1	3,638.4	3,745.0	3,897.2	4,367.4	56,841.4	57,805.5	58,161.6	59,565.0	59,814.8	5%
<b>SCH Produced by Student Level</b>																
Undergraduate	643,641.0	658,095.1	661,014.5	675,672.5	674,354.5	30,461.1	33,512.6	33,986.5	35,969.5	43,248.0	674,102.1	691,607.7	695,001.0	711,642.0	717,602.5	6%
First Professional	52,211.4	53,238.1	53,123.0	54,564.0	53,980.0	1,488.9	1,740.6	1,835.5	1,274.5	1,015.5	53,700.3	54,978.7	54,958.5	55,838.5	54,995.5	2%
Graduate	<u>90,894.4</u>	<u>87,186.5</u>	<u>87,778.0</u>	<u>90,615.0</u>	<u>89,459.5</u>	<u>15,616.0</u>	<u>15,723.5</u>	<u>16,563.0</u>	<u>17,211.0</u>	<u>17,198.0</u>	<u>106,510.4</u>	<u>102,910.0</u>	<u>104,341.0</u>	<u>107,826.0</u>	<u>106,657.5</u>	<u>0%</u>
Total SCH	786,746.8	798,519.7	801,915.5	820,851.5	817,794.0	47,566.0	50,976.7	52,385.0	54,455.0	61,461.5	834,312.8	849,496.4	854,300.5	875,306.5	879,255.5	5%

Source: EMSAS Fall Enrollment file

**Table 2.1 Headcounts, Full-time Equivalence, and Student Credit Hours by Location, Fall 2011 to Fall 2015**

	<u>Columbia</u>															5-yr. Change
	<u>On-Campus</u>					<u>Off-Campus</u>					<u>Total</u>					
	FS11	FS12	FS13	FS14	FS15	FS11	FS12	FS13	FS14	FS15	FS11	FS12	FS13	FS14	FS15	
<b>Headcount by Student Level</b>																
<b>Undergraduate</b>																
Fresh & Soph DS	13,088	13,467	13,397	13,858	13,777	24	35	20	15	24	13,112	13,502	13,417	13,873	13,801	5%
Junior & Senior DS	12,304	12,754	12,906	13,162	13,353	270	333	262	241	239	12,574	13,087	13,168	13,403	13,592	8%
Nondegree	<u>233</u>	<u>289</u>	<u>230</u>	<u>238</u>	<u>261</u>	<u>73</u>	<u>82</u>	<u>113</u>	<u>128</u>	<u>137</u>	<u>306</u>	<u>371</u>	<u>343</u>	<u>366</u>	<u>398</u>	<u>30%</u>
<b>Total Undergraduate</b>	<b>25,625</b>	<b>26,510</b>	<b>26,533</b>	<b>27,258</b>	<b>27,391</b>	<b>367</b>	<b>450</b>	<b>395</b>	<b>384</b>	<b>400</b>	<b>25,992</b>	<b>26,960</b>	<b>26,928</b>	<b>27,642</b>	<b>27,791</b>	<b>7%</b>
<b>First Professional</b>																
Law (JD)	431	416	396	368	335	0	0	0	0	0	431	416	396	368	335	-22%
Medicine (MD)	392	402	395	396	400	0	0	1	0	0	392	402	396	396	400	2%
Vet. Med. (DVM)	<u>413</u>	<u>452</u>	<u>460</u>	<u>458</u>	<u>458</u>	<u>0</u>	<u>1</u>	<u>2</u>	<u>0</u>	<u>0</u>	<u>413</u>	<u>453</u>	<u>462</u>	<u>458</u>	<u>458</u>	<u>11%</u>
<b>Total First Professional</b>	<b>1,236</b>	<b>1,270</b>	<b>1,251</b>	<b>1,222</b>	<b>1,193</b>	<b>0</b>	<b>1</b>	<b>3</b>	<b>0</b>	<b>0</b>	<b>1,236</b>	<b>1,271</b>	<b>1,254</b>	<b>1,222</b>	<b>1,193</b>	<b>-3%</b>
<b>Graduate</b>																
Masters & Ed. Spec.	2,408	2,423	2,344	2,251	2,104	1,126	1,058	1,167	1,348	1,383	3,534	3,481	3,511	3,599	3,487	-1%
Doctoral	2,288	2,189	2,181	2,193	2,197	227	340	408	431	495	2,515	2,529	2,589	2,624	2,692	7%
Nondegree	<u>148</u>	<u>130</u>	<u>106</u>	<u>149</u>	<u>96</u>	<u>337</u>	<u>333</u>	<u>228</u>	<u>189</u>	<u>165</u>	<u>485</u>	<u>463</u>	<u>334</u>	<u>338</u>	<u>261</u>	<u>-46%</u>
<b>Total Graduate</b>	<b>4,844</b>	<b>4,742</b>	<b>4,631</b>	<b>4,593</b>	<b>4,397</b>	<b>1,690</b>	<b>1,731</b>	<b>1,803</b>	<b>1,968</b>	<b>2,043</b>	<b>6,534</b>	<b>6,473</b>	<b>6,434</b>	<b>6,561</b>	<b>6,440</b>	<b>-1%</b>
<b>Grand Total Headcount</b>	<b>31,705</b>	<b>32,522</b>	<b>32,415</b>	<b>33,073</b>	<b>32,981</b>	<b>2,057</b>	<b>2,182</b>	<b>2,201</b>	<b>2,352</b>	<b>2,443</b>	<b>33,762</b>	<b>34,704</b>	<b>34,616</b>	<b>35,425</b>	<b>35,424</b>	<b>5%</b>
<b>FTE Enrollments by Student Level</b>																
Undergraduate	23,707.6	24,505.0	24,580.9	25,216.0	25,422.5	132.3	171.5	172.1	154.5	177.3	23,839.9	24,676.5	24,753.0	25,370.6	25,599.8	7%
First Professional	1,214.9	1,246.7	1,225.0	1,201.9	1,171.6	0.0	1.0	3.0	0.0	0.0	1,214.9	1,247.7	1,228.0	1,201.9	1,171.6	-4%
Graduate	<u>3,257.0</u>	<u>3,224.3</u>	<u>3,126.5</u>	<u>3,092.9</u>	<u>2,986.0</u>	<u>708.6</u>	<u>696.4</u>	<u>767.3</u>	<u>866.1</u>	<u>907.6</u>	<u>3,965.6</u>	<u>3,920.7</u>	<u>3,893.8</u>	<u>3,959.0</u>	<u>3,893.6</u>	<u>-2%</u>
<b>Total FTE</b>	<b>28,179.5</b>	<b>28,976.0</b>	<b>28,932.3</b>	<b>29,510.8</b>	<b>29,580.2</b>	<b>840.9</b>	<b>868.9</b>	<b>942.5</b>	<b>1,020.6</b>	<b>1,084.9</b>	<b>29,020.4</b>	<b>29,844.9</b>	<b>29,874.8</b>	<b>30,531.5</b>	<b>30,665.0</b>	<b>6%</b>
<b>SCH Produced by Student Level</b>																
Undergraduate	355,613.5	367,575.0	368,713.0	378,240.5	381,338.0	1,985.0	2,573.0	2,582.0	2,318.0	2,659.0	357,598.5	370,148.0	371,295.0	380,558.5	383,997.0	7%
First Professional	19,304.5	19,615.5	19,509.5	19,699.5	18,954.0	0.0	1.0	54.0	0.0	0.0	19,304.5	19,616.5	19,563.5	19,699.5	18,954.0	-2%
Graduate	<u>39,084.5</u>	<u>38,692.0</u>	<u>37,517.5</u>	<u>37,115.0</u>	<u>35,832.0</u>	<u>8,503.0</u>	<u>8,357.0</u>	<u>9,208.0</u>	<u>10,393.0</u>	<u>10,891.0</u>	<u>47,587.5</u>	<u>47,049.0</u>	<u>46,725.5</u>	<u>47,508.0</u>	<u>46,723.0</u>	<u>-2%</u>
<b>Total SCH</b>	<b>414,002.5</b>	<b>425,882.5</b>	<b>425,740.0</b>	<b>435,055.0</b>	<b>436,124.0</b>	<b>10,488.0</b>	<b>10,931.0</b>	<b>11,844.0</b>	<b>12,711.0</b>	<b>13,550.0</b>	<b>424,490.5</b>	<b>436,813.5</b>	<b>437,584.0</b>	<b>447,766.0</b>	<b>449,674.0</b>	<b>6%</b>

Source: EMSAS Fall Enrollment file

**Table 2.2 Headcounts, Full-time Equivalence, and Student Credit Hours by Location, Fall 2011 to Fall 2015**

	<u>Kansas City</u>										Total					5-yr. Change
	On-Campus					Off-Campus										
	FS11	FS12	FS13	FS14	FS15	FS11	FS12	FS13	FS14	FS15	FS11	FS12	FS13	FS14	FS15	
<b>Headcount by Student Level</b>																
<b>Undergraduate</b>																
Fresh & Soph DS	3,346	3,493	3,216	2,970	2,936	0	0	2	0	0	3,346	3,493	3,218	2,970	2,936	-12%
Junior & Senior DS	5,086	4,937	5,076	5,156	5,041	27	17	15	1	0	5,113	4,954	5,091	5,157	5,041	-1%
Nondegree	<u>269</u>	<u>306</u>	<u>368</u>	<u>460</u>	<u>397</u>	<u>1,394</u>	<u>1,861</u>	<u>1,550</u>	<u>1,866</u>	<u>2,869</u>	<u>1,663</u>	<u>2,167</u>	<u>1,918</u>	<u>2,326</u>	<u>3,266</u>	<u>96%</u>
Total Undergraduate	8,701	8,736	8,660	8,586	8,374	1,421	1,878	1,567	1,867	2,869	10,122	10,614	10,227	10,453	11,243	11%
<b>First Professional</b>																
Dentistry (DDS)	420	425	425	426	432	0	0	0	0	0	420	425	425	426	432	3%
Law (JD)	470	463	477	470	462	0	0	0	0	1	470	463	477	470	463	-1%
Medicine (MD)	406	416	427	448	424	0	0	0	0	0	406	416	427	448	424	4%
Pharmacy (DPharm)	<u>283</u>	<u>328</u>	<u>328</u>	<u>373</u>	<u>396</u>	<u>80</u>	<u>93</u>	<u>96</u>	<u>65</u>	<u>51</u>	<u>363</u>	<u>421</u>	<u>424</u>	<u>438</u>	<u>447</u>	<u>23%</u>
Total First Professional	1,579	1,632	1,657	1,717	1,714	80	93	96	65	52	1,659	1,725	1,753	1,782	1,766	6%
<b>Graduate</b>																
Masters & Ed. Spec.	2,709	2,638	2,696	2,807	2,692	80	77	53	18	0	2,789	2,715	2,749	2,825	2,692	-3%
Doctoral	648	639	704	781	801	0	0	0	1	1	648	639	704	782	802	24%
Postbacc					6										6	
Nondegree	<u>255</u>	<u>297</u>	<u>285</u>	<u>304</u>	<u>174</u>	<u>0</u>	<u>0</u>	<u>0</u>	<u>0</u>	<u>2</u>	<u>255</u>	<u>297</u>	<u>285</u>	<u>304</u>	<u>176</u>	<u>-31%</u>
Total Graduate	3,612	3,574	3,685	3,892	3,673	80	77	53	19	3	3,692	3,651	3,738	3,911	3,676	0%
<b>Grand Total Headcount</b>	<b>13,892</b>	<b>13,942</b>	<b>14,002</b>	<b>14,195</b>	<b>13,761</b>	<b>1,581</b>	<b>2,048</b>	<b>1,716</b>	<b>1,951</b>	<b>2,924</b>	<b>15,473</b>	<b>15,990</b>	<b>15,718</b>	<b>16,146</b>	<b>16,685</b>	<b>8%</b>
<b>FTE Enrollments by Student Level</b>																
Undergraduate	7,214.4	7,233.9	7,189.6	7,158.0	6,996.8	371.3	480.8	400.0	417.4	800.7	7,585.7	7,714.7	7,589.6	7,575.3	7,797.5	3%
First Professional	1,558.5	1,613.9	1,637.1	1,693.8	1,691.8	80.0	93.0	96.0	65.0	51.1	1,638.5	1,706.9	1,733.1	1,758.8	1,742.9	6%
Graduate	<u>1,990.1</u>	<u>1,927.0</u>	<u>2,043.0</u>	<u>2,209.7</u>	<u>2,201.0</u>	<u>41.3</u>	<u>38.1</u>	<u>25.6</u>	<u>8.2</u>	<u>1.2</u>	<u>2,031.5</u>	<u>1,965.1</u>	<u>2,068.6</u>	<u>2,217.8</u>	<u>2,202.1</u>	<u>8%</u>
Total FTE	10,763.1	10,774.8	10,869.7	11,061.4	10,889.5	492.7	611.9	521.6	490.5	853.0	11,255.7	11,386.7	11,391.3	11,551.9	11,742.5	4%
<b>SCH Produced by Student Level</b>																
Undergraduate	108,216.0	108,509.1	107,843.5	107,369.5	104,951.5	5,570.1	7,212.6	6,000.5	6,260.5	12,011.0	113,786.1	115,721.7	113,844.0	113,630.0	116,962.5	3%
First Professional	29,432.9	30,173.6	30,116.5	31,280.5	31,750.0	1,488.9	1,739.6	1,781.5	1,274.5	1,015.5	30,921.8	31,913.2	31,898.0	32,555.0	32,765.5	6%
Graduate	<u>23,881.4</u>	<u>23,123.5</u>	<u>24,516.5</u>	<u>26,516.0</u>	<u>26,411.5</u>	<u>496.0</u>	<u>457.0</u>	<u>307.0</u>	<u>98.0</u>	<u>14.0</u>	<u>24,377.4</u>	<u>23,580.5</u>	<u>24,823.5</u>	<u>26,614.0</u>	<u>26,425.5</u>	<u>8%</u>
Total SCH	161,530.3	161,806.2	162,476.5	165,166.0	163,113.0	7,555.0	9,409.2	8,089.0	7,633.0	13,040.5	169,085.3	171,215.4	170,565.5	172,799.0	176,153.5	4%

Source: EMSAS Fall Enrollment file

**Table 2.3 Headcounts, Full-time Equivalence, and Student Credit Hours by Location, Fall 2011 to Fall 2015**

	<u>On-Campus</u>					<u>Off-Campus</u>					<u>Total</u>					5-yr. Change
	FS11	FS12	FS13	FS14	FS15	FS11	FS12	FS13	FS14	FS15	FS11	FS12	FS13	FS14	FS15	
<b>Headcount by Student Level</b>																
<b>Undergraduate</b>																
Fresh & Soph DS	2,298	2,325	2,398	2,553	2,789	29	25	13	43	27	2,327	2,350	2,411	2,596	2,816	21%
Junior & Senior DS	3,154	3,285	3,502	3,628	3,763	123	117	151	194	168	3,277	3,402	3,653	3,822	3,931	20%
Nondegree	<u>48</u>	<u>84</u>	<u>77</u>	<u>100</u>	<u>92</u>	<u>19</u>	<u>5</u>	<u>4</u>	<u>2</u>	<u>0</u>	<u>67</u>	<u>89</u>	<u>81</u>	<u>102</u>	<u>92</u>	<u>37%</u>
Total Undergraduate	5,500	5,694	5,977	6,281	6,644	171	147	168	239	195	5,671	5,841	6,145	6,520	6,839	21%
<b>Graduate</b>																
Masters & Ed. Spec.	651	567	640	743	677	659	690	774	781	772	1,310	1,257	1,414	1,524	1,449	11%
Doctoral	504	494	522	548	555	24	23	33	35	37	528	517	555	583	592	12%
Nondegree	<u>3</u>	<u>4</u>	<u>3</u>	<u>2</u>	<u>2</u>	<u>9</u>	<u>26</u>	<u>12</u>	<u>11</u>	<u>4</u>	<u>12</u>	<u>30</u>	<u>15</u>	<u>13</u>	<u>6</u>	<u>-50%</u>
Total Graduate	1,158	1,065	1,165	1,293	1,234	692	739	819	827	813	1,850	1,804	1,984	2,120	2,047	11%
<b>Grand Total Headcount</b>	<b>6,658</b>	<b>6,759</b>	<b>7,142</b>	<b>7,574</b>	<b>7,878</b>	<b>863</b>	<b>886</b>	<b>987</b>	<b>1,066</b>	<b>1,008</b>	<b>7,521</b>	<b>7,645</b>	<b>8,129</b>	<b>8,640</b>	<b>8,886</b>	<b>18%</b>
<b>FTE Enrollments by Student Level</b>																
Undergraduate	5,139.7	5,267.5	5,459.0	5,800.2	6,088.2	96.1	84.1	100.4	146.5	127.2	5,235.8	5,351.6	5,559.4	5,946.8	6,215.4	19%
Graduate	<u>809.0</u>	<u>727.1</u>	<u>819.9</u>	<u>917.0</u>	<u>861.1</u>	<u>331.6</u>	<u>374.2</u>	<u>414.3</u>	<u>414.7</u>	<u>411.8</u>	<u>1,140.6</u>	<u>1,101.3</u>	<u>1,234.2</u>	<u>1,331.7</u>	<u>1,273.0</u>	<u>12%</u>
Total FTE	5,948.7	5,994.5	6,278.9	6,717.2	6,949.3	427.7	458.3	514.7	561.2	539.0	6,376.5	6,452.9	6,793.5	7,278.4	7,488.4	17%
<b>SCH Produced by Student Level</b>																
Undergraduate	77,095.5	79,012.0	81,884.5	87,003.5	91,323.0	1,442.0	1,262.0	1,506.0	2,198.0	1,908.0	78,537.5	80,274.0	83,390.5	89,201.5	93,231.0	19%
Graduate	<u>9,708.5</u>	<u>8,725.0</u>	<u>9,839.0</u>	<u>11,004.0</u>	<u>10,333.5</u>	<u>3,979.0</u>	<u>4,490.5</u>	<u>4,971.0</u>	<u>4,976.0</u>	<u>4,942.0</u>	<u>13,687.5</u>	<u>13,215.5</u>	<u>14,810.0</u>	<u>15,980.0</u>	<u>15,275.5</u>	<u>12%</u>
Total SCH	86,804.0	87,737.0	91,723.5	98,007.5	101,656.5	5,421.0	5,752.5	6,477.0	7,174.0	6,850.0	92,225.0	93,489.5	98,200.5	105,181.5	108,506.5	18%

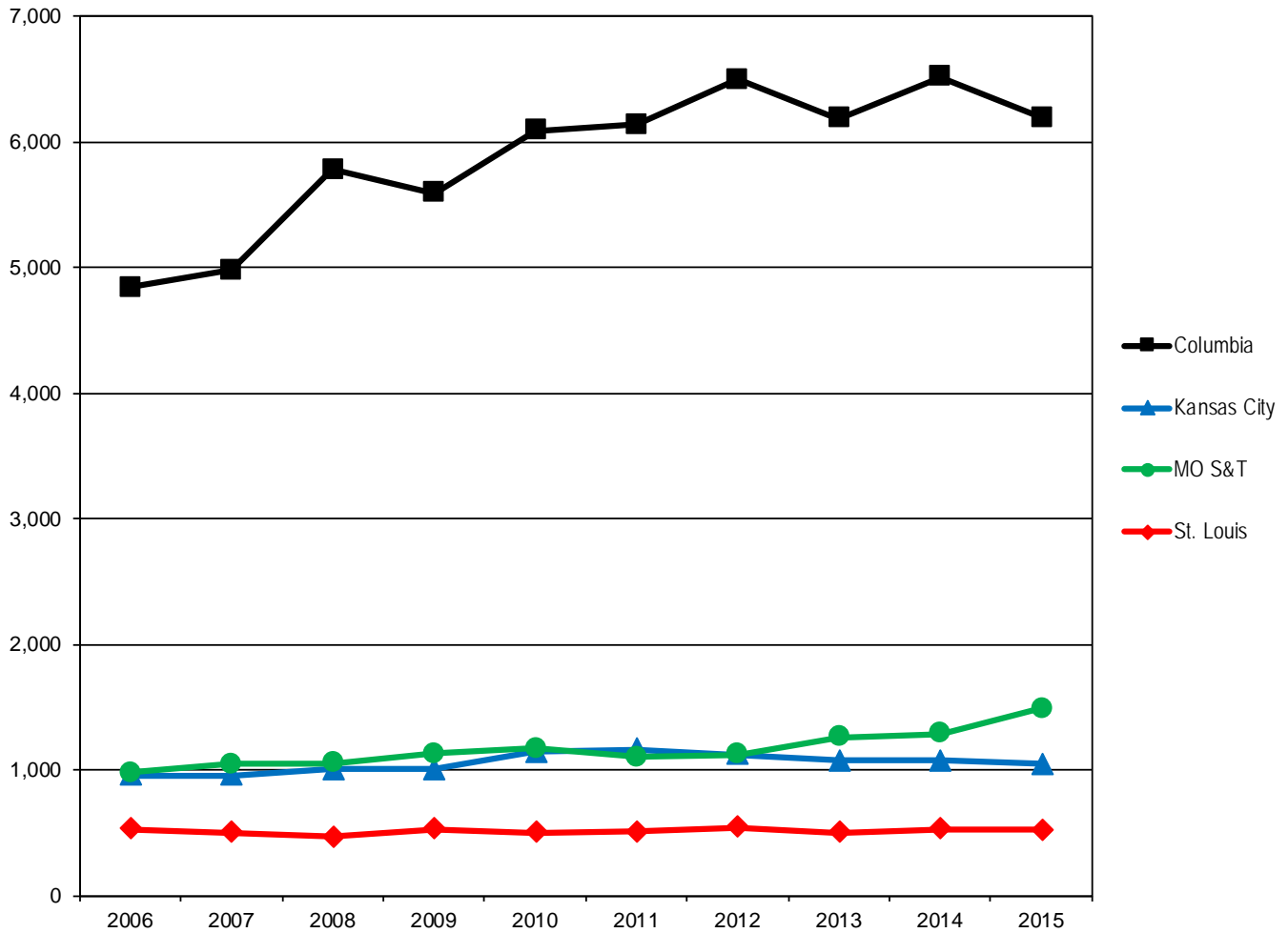
Source: EMSAS Fall Enrollment file

**Table 2.4 Headcounts, Full-time Equivalence, and Student Credit Hours by Location, Fall 2011 to Fall 2015**

	<u>On-Campus</u>					<u>St. Louis</u> <u>Off-Campus</u>					<u>Total</u>					5-yr. Change
	FS11	FS12	FS13	FS14	FS15	FS11	FS12	FS13	FS14	FS15	FS11	FS12	FS13	FS14	FS15	
	<b>Headcount by Student Level</b>															
<b>Undergraduate</b>																
Fresh & Soph DS	2,315	2,165	2,023	1,964	1,804	7	4	2	0	0	2,322	2,169	2,025	1,964	1,804	-22%
Junior & Senior DS	6,624	6,747	6,870	6,949	6,455	85	65	33	23	16	6,709	6,812	6,903	6,972	6,471	-4%
Nondegree	<u>376</u>	<u>359</u>	<u>375</u>	<u>393</u>	<u>374</u>	<u>3,744</u>	<u>3,995</u>	<u>4,266</u>	<u>4,545</u>	<u>4,896</u>	<u>4,120</u>	<u>4,354</u>	<u>4,641</u>	<u>4,938</u>	<u>5,270</u>	<u>28%</u>
<b>Total Undergraduate</b>	9,315	9,271	9,268	9,306	8,633	3,836	4,064	4,301	4,568	4,912	13,151	13,335	13,569	13,874	13,545	3%
<b>First Professional</b>																
Optometry (OD)	<u>172</u>	<u>168</u>	<u>172</u>	<u>176</u>	<u>172</u>	<u>0</u>	<u>0</u>	<u>0</u>	<u>0</u>	<u>0</u>	<u>172</u>	<u>168</u>	<u>172</u>	<u>176</u>	<u>172</u>	<u>0%</u>
<b>Total First Professional</b>	172	168	172	176	172	0	0	0	0	0	172	168	172	176	172	0%
<b>Graduate</b>																
Masters & Ed. Spec.	2,207	2,001	1,930	1,910	2,020	465	415	371	317	213	2,672	2,416	2,301	2,227	2,233	-16%
Doctoral	571	554	573	572	578	0	3	1	2	1	571	557	574	574	579	1%
Postbacc					90					2					92	
Nondegree	<u>205</u>	<u>192</u>	<u>160</u>	<u>184</u>	<u>95</u>	<u>38</u>	<u>37</u>	<u>33</u>	<u>37</u>	<u>22</u>	<u>243</u>	<u>229</u>	<u>193</u>	<u>221</u>	<u>117</u>	<u>-52%</u>
<b>Total Graduate</b>	2,983	2,747	2,663	2,666	2,783	503	455	405	356	238	3,486	3,202	3,068	3,022	3,021	-13%
<b>Grand Total Headcount</b>	12,470	12,186	12,103	12,148	11,588	4,339	4,519	4,706	4,924	5,150	16,809	16,705	16,809	17,072	16,738	0%
<b>FTE Enrollments by Student Level</b>																
Undergraduate	6,847.7	6,866.6	6,838.2	6,870.6	6,449.5	1,430.9	1,497.7	1,593.2	1,679.5	1,778.0	8,278.7	8,364.3	8,431.4	8,550.1	8,227.5	-1%
First Professional	172.0	168.0	172.0	176.0	172.0	0.0	0.0	0.0	0.0	0.0	172.0	168.0	172.0	176.0	172.0	0%
Graduate	<u>1,518.3</u>	<u>1,387.2</u>	<u>1,325.4</u>	<u>1,331.7</u>	<u>1,406.9</u>	<u>219.8</u>	<u>201.6</u>	<u>173.1</u>	<u>145.3</u>	<u>112.6</u>	<u>1,738.2</u>	<u>1,588.8</u>	<u>1,498.5</u>	<u>1,477.0</u>	<u>1,519.5</u>	<u>-13%</u>
<b>Total FTE</b>	8,538.1	8,421.8	8,335.7	8,378.3	8,028.3	1,650.8	1,699.3	1,766.3	1,824.9	1,890.6	10,188.8	10,121.0	10,101.9	10,203.1	9,918.9	-3%
<b>SCH Produced by Student Level</b>																
Undergraduate	102,716.0	102,999.0	102,573.5	103,059.0	96,742.0	21,464.0	22,465.0	23,898.0	25,193.0	26,670.0	124,180.0	125,464.0	126,471.5	128,252.0	123,412.0	-1%
First Professional	3,474.0	3,449.0	3,497.0	3,584.0	3,276.0	0.0	0.0	0.0	0.0	0.0	3,474.0	3,449.0	3,497.0	3,584.0	3,276.0	-6%
Graduate	<u>18,220.0</u>	<u>16,646.0</u>	<u>15,905.0</u>	<u>15,980.0</u>	<u>16,882.5</u>	<u>2,638.0</u>	<u>2,419.0</u>	<u>2,077.0</u>	<u>1,744.0</u>	<u>1,351.0</u>	<u>20,858.0</u>	<u>19,065.0</u>	<u>17,982.0</u>	<u>17,724.0</u>	<u>18,233.5</u>	<u>-13%</u>
<b>Total SCH</b>	124,410.0	123,094.0	121,975.5	122,623.0	116,900.5	24,102.0	24,884.0	25,975.0	26,937.0	28,021.0	148,512.0	147,978.0	147,950.5	149,560.0	144,921.5	-2%

Source: EMSAS Fall Enrollment file

**Figure 3a. On-Campus First-time College History,  
2006 to 2015**



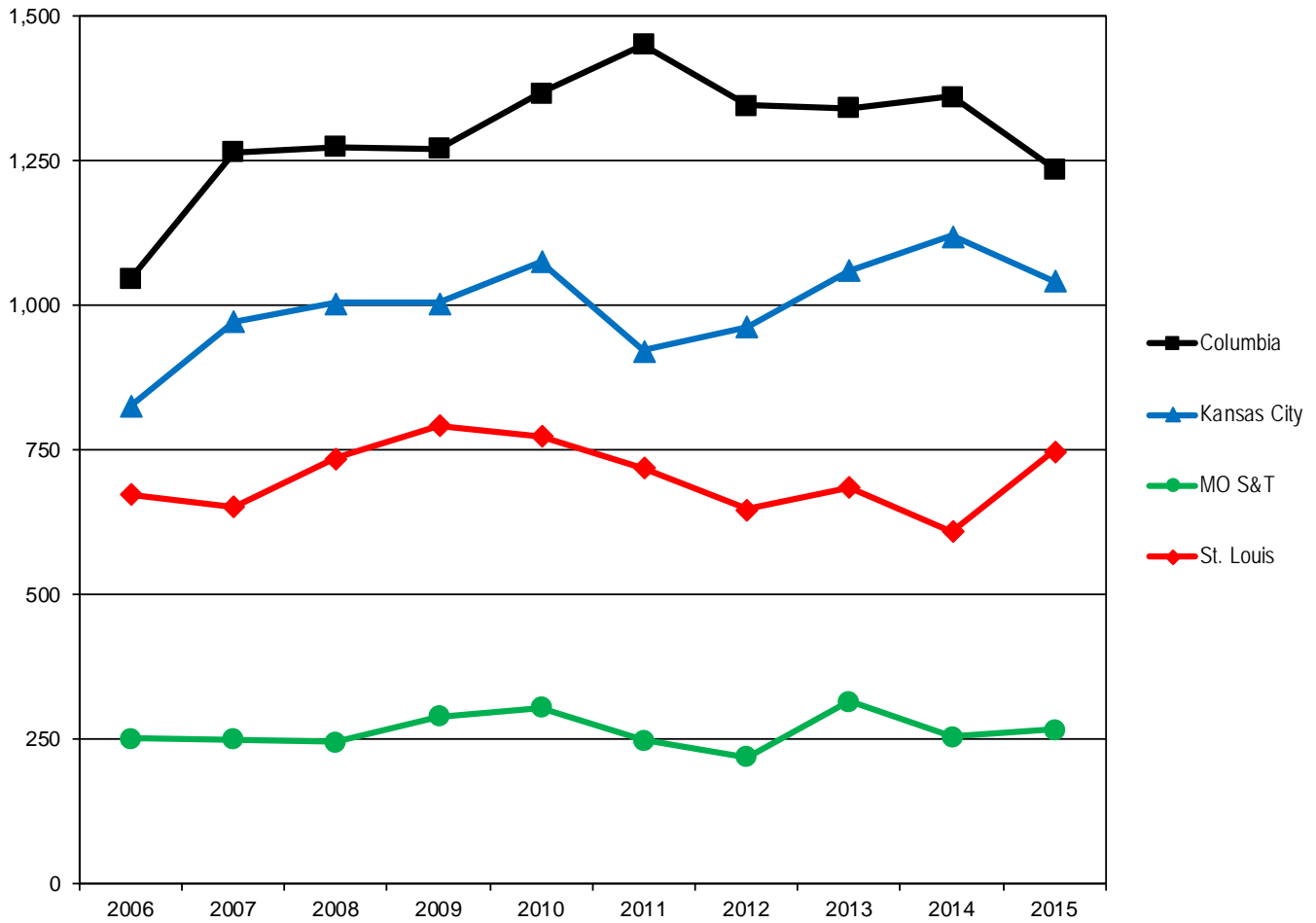
Source: EMSAS Fall Enrollment file  
IR&P/LCB 10/22/15

**On-Campus First-time College History, 2006 to 2015**

Campus	2006	2007	2008	2009	2010	2011	2012	2013	2014	2015
Columbia	4,842	4,981	5,780	5,589	6,087	6,137	6,498	6,187	6,514	6,191
Kansas City	959	959	1,008	1,007	1,147	1,161	1,125	1,078	1,074	1,049
MO S&T	977	1,050	1,055	1,132	1,170	1,101	1,125	1,263	1,291	1,489
St. Louis	530	502	468	527	502	508	547	500	531	526
<b>Total</b>	<b>7,308</b>	<b>7,492</b>	<b>8,311</b>	<b>8,255</b>	<b>8,906</b>	<b>8,907</b>	<b>9,295</b>	<b>9,028</b>	<b>9,410</b>	<b>9,255</b>



**Figure 3b. On-Campus New Graduate Student History by Campus, 2006 to 2015**

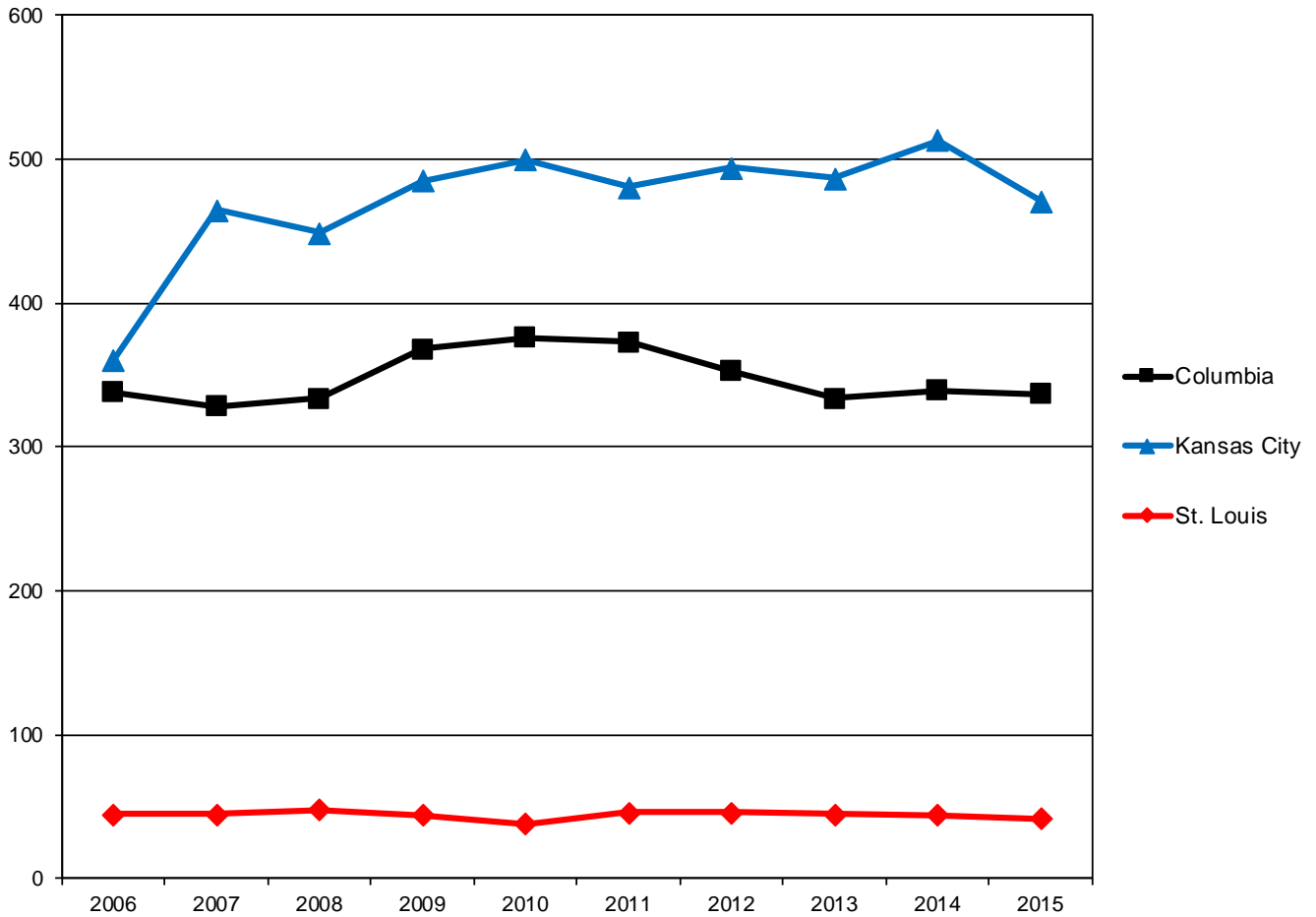


Source: EMSAS Fall Enrollment file  
IR&PCB 10/22/15

**On-Campus New Graduate Student History by Campus, 2006 to 2015**

Campus	2006	2007	2008	2009	2010	2011	2012	2013	2014	2015
Columbia	1,046	1,266	1,274	1,272	1,367	1,452	1,346	1,342	1,361	1,236
Kansas City	826	973	1,005	1,005	1,076	922	963	1,061	1,121	1,043
MO S&T	251	250	245	290	305	248	219	316	254	266
St. Louis	674	652	736	792	775	720	648	686	610	749
<b>Total</b>	<b>2,797</b>	<b>3,141</b>	<b>3,260</b>	<b>3,359</b>	<b>3,523</b>	<b>3,342</b>	<b>3,176</b>	<b>3,405</b>	<b>3,346</b>	<b>3,294</b>

**Figure 3c. On-Campus New First Professional Student History by Campus, 2006 to 2015**



Source: EMSAS Fall Enrollment file  
IR&P/LCB 10/22/15

**On-Campus New First Professional Student History By Campus, 2006 to 2015**

Campus	2006	2007	2008	2009	2010	2011	2012	2013	2014	2015
Columbia	338	328	334	368	376	373	353	334	339	337
Kansas City	361	465	449	485	500	481	494	487	513	471
St. Louis	45	45	48	44	38	46	46	45	44	42
<b>Total</b>	<b>744</b>	<b>838</b>	<b>831</b>	<b>897</b>	<b>914</b>	<b>900</b>	<b>893</b>	<b>866</b>	<b>896</b>	<b>850</b>

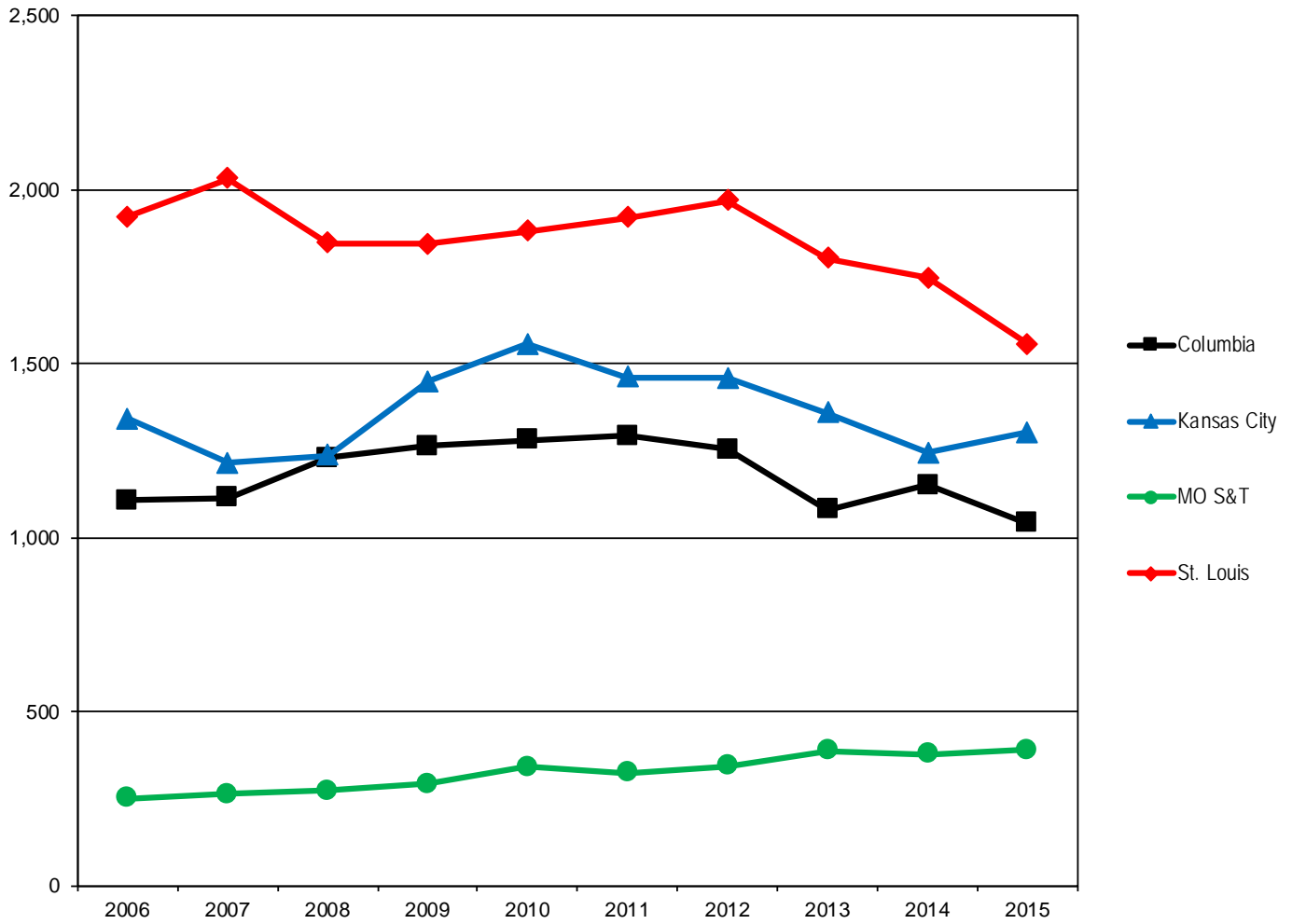
**Table 3. On-Campus New Student Headcount, Fall 2011 - Fall 2015**

	2011	2012	2013	2014	2015	5-yr. Change
<b>Columbia</b>						
<b>First-time College</b>						
Degree-Seeking	6,137	6,498	6,187	6,514	6,191	1%
Non Degree-Seeking	0	0	0	0	0	
<b>Undergraduate Transfers</b>						
Degree-Seeking	1,261	1,207	1,063	1,124	1,042	-17%
Non Degree-Seeking	33	46	19	27	1	-97%
<b>Professional</b>						
Degree-Seeking	373	353	334	339	337	-10%
<b>Graduate</b>						
Degree-Seeking	1,353	1,257	1,269	1,254	1,173	-13%
Non Degree-Seeking	99	89	73	107	63	-36%
<b>Kansas City</b>						
<b>First-time College</b>						
Degree-Seeking	1,159	1,125	1,078	1,073	1,049	-9%
Non Degree-Seeking	2	0	0	1	0	-100%
<b>Undergraduate Transfers</b>						
Degree-Seeking	1,462	1,459	1,358	1,245	1,302	-11%
Non Degree-Seeking	0	0	0	0	0	
<b>Professional</b>						
Degree-Seeking	481	494	487	513	471	-2%
Non Degree-Seeking	0	0	0	0	0	
<b>Graduate</b>						
Degree-Seeking	922	963	1,061	1,121	1,039	13%
Non Degree-Seeking	0	0	0	0	4	
<b>Missouri S&amp;T</b>						
<b>First-time College</b>						
Degree-Seeking	1,096	1,124	1,262	1,288	1,487	36%
Non Degree-Seeking	5	1	1	3	2	-60%
<b>Undergraduate Transfers</b>						
Degree-Seeking	326	345	387	378	386	18%
Non Degree-Seeking	0	0	1	1	5	
<b>Graduate</b>						
Degree-Seeking	247	218	316	253	265	7%
Non Degree-Seeking	1	1	0	1	1	0%
<b>St Louis</b>						
<b>First-time College</b>						
Degree-Seeking	504	546	482	513	516	2%
Non Degree-Seeking	4	1	18	18	10	150%
<b>Undergraduate Transfers</b>						
Degree-Seeking	1,726	1,795	1,625	1,571	1,400	-19%
Non Degree-Seeking	193	174	179	177	156	-19%
<b>Professional</b>						
Degree-Seeking	46	46	45	44	42	-9%
<b>Graduate</b>						
Degree-Seeking	670	600	652	574	702	5%
Non Degree-Seeking	50	48	34	36	47	-6%

Source: EMSAS Fall Enrollment file

IR&P/LCB 10/22/15

**Figure 4. First-time On-Campus Undergraduate Transfer Student History by Campus, 2006 to 2015**



Source: EMSAS Fall Enrollment file  
IR&P/LCB 10/22/15

**First-time On-Campus Undergraduate Transfer Student History by Campus, 2006 to 2015** □

Campus	2006	2007	2008	2009	2010	2011	2012	2013	2014	2015
Columbia	1,108	1,116	1,230	1,265	1,282	1,294	1,253	1,082	1,151	1,043
Kansas City	1,343	1,214	1,238	1,450	1,556	1,462	1,459	1,358	1,245	1,302
MO S&T	252	264	274	293	342	326	345	388	379	391
St. Louis	1,922	2,032	1,846	1,845	1,881	1,919	1,969	1,804	1,748	1,556
<b>Total</b>	<b>4,625</b>	<b>4,626</b>	<b>4,588</b>	<b>4,853</b>	<b>5,061</b>	<b>5,001</b>	<b>5,026</b>	<b>4,632</b>	<b>4,523</b>	<b>4,292</b>

**Table 4.0a Resident Headcount History by Student Level, Load, and Campus, Fall 2011 to Fall 2015**

Level	2011	2012	2013	2014	2015	5 yr. Change
<b>UNIVERSITY OF MISSOURI SYSTEM FULL-TIME RESIDENT HEADCOUNT</b>						
Undergraduate						
Freshman & Soph DS	14,856	14,641	13,845	13,753	13,762	-7%
Junior & Senior DS	18,419	18,715	19,092	19,303	19,300	5%
Nondegree	157	160	206	199	188	20%
<b>Total System Full-time Resident Undergraduate</b>	<b>33,432</b>	<b>33,516</b>	<b>33,143</b>	<b>33,255</b>	<b>33,250</b>	<b>-1%</b>
First Professional						
Dentistry (DDS)	308	308	307	295	298	-3%
Law (JD)	732	692	648	613	588	-20%
Medicine (MD)	644	656	633	647	642	0%
Optometry (OD)	65	60	64	70	75	15%
Pharmacy (Dpharm)	335	390	394	396	399	19%
Vet. Med (DVM)	344	386	384	364	359	4%
<b>Total System Full-time Resident 1st Professional</b>	<b>2,428</b>	<b>2,492</b>	<b>2,430</b>	<b>2,385</b>	<b>2,361</b>	<b>-3%</b>
Graduate						
Masters & Ed. Spec.	2,308	2,106	1,998	1,974	1,913	-17%
Doctoral	1,013	1,032	979	1,038	1,014	0%
Postbacc					11	-
Nondegree	57	58	34	32	16	-72%
<b>Total System Full-time Resident Graduate</b>	<b>3,378</b>	<b>3,196</b>	<b>3,011</b>	<b>3,044</b>	<b>2,954</b>	<b>-13%</b>
<b>Total System Full-time Resident Headcount</b>	<b>39,238</b>	<b>39,204</b>	<b>38,584</b>	<b>38,684</b>	<b>38,565</b>	<b>-2%</b>
<b>UNIVERSITY OF MISSOURI SYSTEM PART-TIME RESIDENT HEADCOUNT</b>						
Undergraduate						
Freshman & Soph DS	1,050	963	913	821	748	-29%
Junior & Senior DS	4,701	4,786	4,686	4,816	4,464	-5%
Nondegree	5,592	6,366	6,329	6,900	8,291	48%
<b>Total System Part-time Resident Undergraduate</b>	<b>11,343</b>	<b>12,115</b>	<b>11,928</b>	<b>12,537</b>	<b>13,503</b>	<b>19%</b>
First Professional						
Dentistry (DDS)	0	0	0	0	0	-
Law (JD)	35	40	53	41	39	11%
Medicine (MD)	0	0	0	0	0	-
Optometry (OD)	0	0	0	0	0	-
Pharmacy (Dpharm)	0	0	0	0	0	-
Vet. Med (DVM)	0	0	0	0	0	-
<b>Total System Part-time Resident 1st Professional</b>	<b>35</b>	<b>40</b>	<b>53</b>	<b>41</b>	<b>39</b>	<b>11%</b>
Graduate						
Masters & Ed. Spec.	4,106	3,751	3,641	3,521	3,292	-20%
Doctoral	892	854	964	933	965	8%
Postbacc					75	-
Nondegree	701	666	531	524	319	-54%
<b>Total System Part-time Resident Graduate</b>	<b>5,699</b>	<b>5,271</b>	<b>5,136</b>	<b>4,978</b>	<b>4,651</b>	<b>-18%</b>
<b>Total System Part-time Resident Headcount</b>	<b>17,077</b>	<b>17,426</b>	<b>17,117</b>	<b>17,556</b>	<b>18,193</b>	<b>7%</b>
<b>UNIVERSITY OF MISSOURI SYSTEM TOTAL RESIDENT HEADCOUNT</b>						
Undergraduate						
Freshman & Soph DS	15,906	15,604	14,758	14,574	14,510	-9%
Junior & Senior DS	23,120	23,501	23,778	24,119	23,764	3%
Nondegree	5,749	6,526	6,535	7,099	8,479	47%
<b>Total System Resident Undergraduate</b>	<b>44,775</b>	<b>45,631</b>	<b>45,071</b>	<b>45,792</b>	<b>46,753</b>	<b>4%</b>
First Professional						
Dentistry (DDS)	308	308	307	295	298	-3%
Law (JD)	767	732	701	654	627	-18%
Medicine (MD)	644	656	633	647	642	0%
Optometry (OD)	65	60	64	70	75	15%
Pharmacy (Dpharm)	335	390	394	396	399	19%
Vet. Med (DVM)	344	386	384	364	359	4%
<b>Total System Resident 1st Professional</b>	<b>2,463</b>	<b>2,532</b>	<b>2,483</b>	<b>2,426</b>	<b>2,400</b>	<b>-3%</b>
Graduate						
Masters & Ed. Spec.	6,414	5,857	5,639	5,495	5,205	-19%
Doctoral	1,905	1,886	1,943	1,971	1,979	4%
Postbacc					86	-
Nondegree	758	724	565	556	335	-56%
<b>Total System Resident Graduate</b>	<b>9,077</b>	<b>8,467</b>	<b>8,147</b>	<b>8,022</b>	<b>7,605</b>	<b>-16%</b>
<b>Grand Total System Resident Headcount</b>	<b>56,315</b>	<b>56,630</b>	<b>55,701</b>	<b>56,240</b>	<b>56,758</b>	<b>1%</b>

**Table 4.0b Non-Resident Headcount History by Student Level, Load, and Campus, Fall 2011 to Fall 2015**

Level	2011	2012	2013	2014	2015	5 yr. Change
<b>UNIVERSITY OF MISSOURI SYSTEM FULL-TIME NON-RESIDENT HEADCOUNT</b>						
Undergraduate						
Freshman & Soph DS	4,928	5,599	5,998	6,524	6,501	32%
Junior & Senior DS	3,819	3,996	4,167	4,371	4,464	17%
Nondegree	241	290	270	422	327	36%
Total System Full-time Non-Resident	8,988	9,885	10,435	11,317	11,292	26%
First Professional						
Dentistry (DDS)	112	117	118	131	134	20%
Law (JD)	127	136	159	171	155	22%
Medicine (MD)	154	162	190	197	182	18%
Optometry (OD)	107	108	108	106	97	-9%
Pharmacy (Dpharm)	28	31	30	42	48	71%
Vet. Med (DVM)	69	67	78	94	99	43%
Total System Full-time Non-Resident 1st	597	621	683	741	715	20%
Graduate						
Masters & Ed. Spec.	1,943	2,052	2,373	2,673	2,585	33%
Doctoral	1,695	1,683	1,775	1,866	1,924	14%
Postbacc					4	-
Nondegree	36	38	36	62	37	3%
Total System Full-time Non-Resident Graduate	3,674	3,773	4,184	4,601	4,550	24%
Total System Full-time Non-Resident Headcount	13,259	14,279	15,302	16,659	16,557	25%
<b>UNIVERSITY OF MISSOURI SYSTEM PART-TIME NON-RESIDENT HEADCOUNT</b>						
Undergraduate						
Freshman & Soph DS	273	311	315	305	346	27%
Junior & Senior DS	734	758	870	864	807	10%
Nondegree	166	165	178	211	220	33%
Total System Part-time Non-Resident	1,173	1,234	1,363	1,380	1,373	17%
First Professional						
Law (JD)	7	11	13	13	16	129%
Medicine (MD)	0	0	0	0	0	-
Vet. Med (DVM)	0	0	0	0	0	-
Professional	7	11	13	13	16	129%
Graduate						
Masters & Ed. Spec.	1,948	1,960	1,963	2,007	2,071	6%
Doctoral	662	673	704	726	762	15%
Postbacc					8	-
Nondegree	201	257	226	258	188	-6%
Total System Part-time Non-Resident Graduate	2,811	2,890	2,893	2,991	3,029	8%
Total System Part-time Non-Resident Headcount	3,991	4,135	4,269	4,384	4,418	11%
<b>UNIVERSITY OF MISSOURI SYSTEM TOTAL NON-RESIDENT HEADCOUNT</b>						
Undergraduate						
Freshman & Soph DS	5,201	5,910	6,313	6,829	6,847	32%
Junior & Senior DS	4,553	4,754	5,037	5,235	5,271	16%
Nondegree	407	455	448	633	547	34%
Total System Non-Resident Undergraduate	10,161	11,119	11,798	12,697	12,665	25%
First Professional						
Dentistry (DDS)	112	117	118	131	134	20%
Law (JD)	134	147	172	184	171	28%
Medicine (MD)	154	162	190	197	182	18%
Optometry (OD)	107	108	108	106	97	-9%
Pharmacy (Dpharm)	28	31	30	42	48	71%
Vet. Med (DVM)	69	67	78	94	99	43%
Total System Non-Resident 1st Professional	604	632	696	754	731	21%
Graduate						
Masters & Ed. Spec.	3,891	4,012	4,336	4,680	4,656	20%
Doctoral	2,357	2,356	2,479	2,592	2,686	14%
Postbacc					12	-
Nondegree	237	295	262	320	225	-5%
Total System Non-Resident Graduate	6,485	6,663	7,077	7,592	7,579	17%
Grand Total System Non-Resident Headcount	17,250	18,414	19,571	21,043	20,975	22%

**Table 4.1a Resident Headcount History by Student Level, Load, and Campus, Fall 2011 to Fall 2015**

<b>Level</b>	<b>2011</b>	<b>2012</b>	<b>2013</b>	<b>2014</b>	<b>2015</b>	<b>5 yr. Change</b>
<b>UNIVERSITY OF MISSOURI-COLUMBIA FULL-TIME RESIDENT HEADCOUNT</b>						
Undergraduate						
Freshman & Soph DS	9,315	9,191	8,640	8,561	8,460	-9%
Junior & Senior DS	9,922	10,046	10,152	10,132	10,254	3%
Nondegree	2	3	2	7	14	600%
Total MU Full-time Resident Undergraduate	19,239	19,240	18,794	18,700	18,728	-3%
First Professional						
Law (JD)	402	367	339	304	272	-32%
Medicine (MD)	377	384	364	372	375	-1%
Vet. Med (DVM)	344	386	384	364	359	4%
Total MU Full-time Resident 1st Professional	1,123	1,137	1,087	1,040	1,006	-10%
Graduate						
Masters & Ed. Spec.	1,133	1,112	1,072	1,050	1,011	-11%
Doctoral	750	791	712	754	711	-5%
Nondegree	23	26	11	18	9	-61%
Total MU Full-time Resident Graduate	1,906	1,929	1,795	1,822	1,731	-9%
<b>Total MU Full-time Resident Headcount</b>	<b>22,268</b>	<b>22,306</b>	<b>21,676</b>	<b>21,562</b>	<b>21,465</b>	<b>-4%</b>
<b>UNIVERSITY OF MISSOURI-COLUMBIA PART-TIME RESIDENT HEADCOUNT</b>						
Undergraduate						
Freshman & Soph DS	266	245	231	220	221	-17%
Junior & Senior DS	885	988	882	987	888	0%
Nondegree	153	199	207	178	186	22%
Total MU Part-time Resident Undergraduate	1,304	1,432	1,320	1,385	1,295	-1%
First Professional						
Law (JD)	11	20	28	18	17	55%
Medicine (MD)	0	0	0	0	0	-
Vet. Med (DVM)	0	0	0	0	0	-
Total MU Part-time Resident 1st Professional	11	20	28	18	17	55%
Graduate						
Masters & Ed. Spec.	1,116	1,043	999	1,035	947	-15%
Doctoral	416	368	453	387	444	7%
Nondegree	345	337	225	183	150	-57%
Total MU Part-time Resident Graduate	1,877	1,748	1,677	1,605	1,541	-18%
<b>Total MU Part-time Resident Headcount</b>	<b>3,192</b>	<b>3,200</b>	<b>3,025</b>	<b>3,008</b>	<b>2,853</b>	<b>-11%</b>
<b>UNIVERSITY OF MISSOURI-COLUMBIA TOTAL RESIDENT HEADCOUNT</b>						
Undergraduate						
Freshman & Soph DS	9,581	9,436	8,871	8,781	8,681	-9%
Junior & Senior DS	10,807	11,034	11,034	11,119	11,142	3%
Nondegree	155	202	209	185	200	29%
Total MU Resident Undergraduate	20,543	20,672	20,114	20,085	20,023	-3%
First Professional						
Law (JD)	413	387	367	322	289	-30%
Medicine (MD)	377	384	364	372	375	-1%
Vet. Med (DVM)	344	386	384	364	359	4%
Total MU Resident 1st Professional	1,134	1,157	1,115	1,058	1,023	-10%
Graduate						
Masters & Ed. Spec.	2,249	2,155	2,071	2,085	1,958	-13%
Doctoral	1,166	1,159	1,165	1,141	1,155	-1%
Nondegree	368	363	236	201	159	-57%
Total MU Resident Graduate	3,783	3,677	3,472	3,427	3,272	-14%
<b>Grand Total MU Resident Headcount</b>	<b>25,460</b>	<b>25,506</b>	<b>24,701</b>	<b>24,570</b>	<b>24,318</b>	<b>-4%</b>

**Table 4.1b Non-Resident Headcount History by Student Level, Load, and Campus, Fall 2011 to Fall 2015**

<b>Level</b>	<b>2011</b>	<b>2012</b>	<b>2013</b>	<b>2014</b>	<b>2015</b>	<b>5 yr. Change</b>
<b>UNIVERSITY OF MISSOURI-COLUMBIA FULL-TIME NON-RESIDENT HEADCOUNT</b>						
Undergraduate						
Freshman & Soph DS	3,417	3,923	4,380	4,939	4,907	44%
Junior & Senior DS	1,644	1,886	1,996	2,121	2,288	39%
Nondegree	113	129	88	99	104	-8%
Total MU Full-time Non-Resident Undergraduate	5,174	5,938	6,464	7,159	7,299	41%
First Professional						
Law (JD)	18	27	26	44	45	150%
Medicine (MD)	15	18	32	24	25	67%
Vet. Med (DVM)	69	67	78	94	99	43%
Total MU Full-time Non-Resident 1st Professional	102	112	136	162	169	66%
Graduate						
Masters & Ed. Spec.	797	849	903	877	840	5%
Doctoral	1,067	1,073	1,114	1,157	1,191	12%
Nondegree	24	26	25	45	26	8%
Total MU Full-time Non-Resident Graduate	1,888	1,948	2,042	2,079	2,057	9%
<b>Total MU Full-time Non-Resident Headcount</b>	<b>7,164</b>	<b>7,998</b>	<b>8,642</b>	<b>9,400</b>	<b>9,525</b>	<b>33%</b>
<b>UNIVERSITY OF MISSOURI-COLUMBIA PART-TIME NON-RESIDENT HEADCOUNT</b>						
Undergraduate						
Freshman & Soph DS	114	143	166	153	213	87%
Junior & Senior DS	123	167	138	163	162	32%
Nondegree	38	40	46	82	94	147%
Total MU Part-time Non-Resident Undergraduate	275	350	350	398	469	71%
First Professional						
Law (JD)	0	2	3	2	1	-
Medicine (MD)	0	0	0	0	0	-
Vet. Med (DVM)	0	0	0	0	0	-
Total MU Part-time Non-Resident 1st Professional	0	2	3	2	1	-
Graduate						
Masters & Ed. Spec.	488	477	537	637	689	41%
Doctoral	282	297	310	326	346	23%
Nondegree	93	74	73	92	76	-18%
Total MU Part-time Non-Resident Graduate	863	848	920	1,055	1,111	29%
<b>Total MU Part-time Non-Resident Headcount</b>	<b>1,138</b>	<b>1,200</b>	<b>1,273</b>	<b>1,455</b>	<b>1,581</b>	<b>39%</b>
<b>UNIVERSITY OF MISSOURI-COLUMBIA TOTAL NON-RESIDENT HEADCOUNT</b>						
Undergraduate						
Freshman & Soph DS	3,531	4,066	4,546	5,092	5,120	45%
Junior & Senior DS	1,767	2,053	2,134	2,284	2,450	39%
Nondegree	151	169	134	181	198	31%
Total MU Non-Resident Undergraduate	5,449	6,288	6,814	7,557	7,768	43%
First Professional						
Law (JD)	18	29	29	46	46	156%
Medicine (MD)	15	18	32	24	25	67%
Vet. Med (DVM)	69	67	78	94	99	43%
Total MU Non-Resident 1st Professional	102	114	139	164	170	67%
Graduate						
Masters & Ed. Spec.	1,285	1,326	1,440	1,514	1,529	19%
Doctoral	1,349	1,370	1,424	1,483	1,537	14%
Nondegree	117	100	98	137	102	-13%
Total MU Non-Resident Graduate	2,751	2,796	2,962	3,134	3,168	15%
<b>Grand Total MU Non-Resident Headcount</b>	<b>8,302</b>	<b>9,198</b>	<b>9,915</b>	<b>10,855</b>	<b>11,106</b>	<b>34%</b>



**Table 4.2a Resident Headcount History by Student Level, Load, and Campus, Fall 2011 to Fall 2015**

Level	2011	2012	2013	2014	2015	5 yr. Change
<b>UNIVERSITY OF MISSOURI-KANSAS CITY FULL-TIME RESIDENT HEADCOUNT</b>						
Undergraduate						
Freshman & Soph DS	2,183	2,241	2,041	1,901	1,851	-15%
Junior & Senior DS	2,631	2,563	2,668	2,718	2,695	2%
Nondegree	7	8	10	11	30	329%
Total UMKC Full-time Resident Undergraduate	4,821	4,812	4,719	4,630	4,576	-5%
First Professional						
Dentistry (DDS)	308	308	307	295	298	-3%
Law (JD)	330	325	309	309	316	-4%
Medicine (MD)	267	272	269	275	267	0%
Pharmacy (Dpharm)	335	390	394	396	399	19%
Total UMKC Full-time Resident 1st Professional	1,240	1,295	1,279	1,275	1,280	3%
Graduate						
Masters & Ed. Spec.	522	452	456	431	388	-26%
Doctoral	53	50	64	94	90	70%
Postbacc					1	-
Nondegree	0	4	4	1	3	-
Total UMKC Full-time Resident Graduate	575	506	524	526	482	-16%
Total UMKC Full-time Resident Headcount	6,636	6,613	6,522	6,431	6,338	-4%
<b>UNIVERSITY OF MISSOURI-KANSAS CITY PART-TIME RESIDENT HEADCOUNT</b>						
Undergraduate						
Freshman & Soph DS	305	303	268	200	206	-32%
Junior & Senior DS	895	882	826	832	817	-9%
Nondegree	1,495	1,974	1,699	2,024	3,013	102%
Total UMKC Part-time Resident Undergraduate	2,695	3,159	2,793	3,056	4,036	50%
First Professional						
Dentistry (DDS)	0	0	0	0	0	-
Law (JD)	24	20	25	23	22	-8%
Medicine (MD)	0	0	0	0	0	-
Pharmacy (Dpharm)	0	0	0	0	0	-
Total UMKC Part-time Resident 1st Professional	24	20	25	23	22	-8%
Graduate						
Masters & Ed. Spec.	1,058	1,000	925	824	699	-34%
Doctoral	164	172	189	215	225	37%
Postbacc					2	-
Nondegree	187	159	147	153	68	-64%
Total UMKC Part-time Resident Graduate	1,409	1,331	1,261	1,192	994	-29%
Total UMKC Part-time Resident Headcount	4,128	4,510	4,079	4,271	5,052	22%
<b>UNIVERSITY OF MISSOURI-KANSAS CITY TOTAL RESIDENT HEADCOUNT</b>						
Undergraduate						
Freshman & Soph DS	2,488	2,544	2,309	2,101	2,057	-17%
Junior & Senior DS	3,526	3,445	3,494	3,550	3,512	0%
Nondegree	1,502	1,982	1,709	2,035	3,043	103%
Total UMKC Resident Undergraduate	7,516	7,971	7,512	7,686	8,612	15%
First Professional						
Dentistry (DDS)	308	308	307	295	298	-3%
Law (JD)	354	345	334	332	338	-5%
Medicine (MD)	267	272	269	275	267	0%
Pharmacy (Dpharm)	335	390	394	396	399	19%
Total UMKC Resident 1st Professional	1,264	1,315	1,304	1,298	1,302	3%
Graduate						
Masters & Ed. Spec.	1,580	1,452	1,381	1,255	1,087	-31%
Doctoral	217	222	253	309	315	45%
Postbacc					3	-
Nondegree	187	163	151	154	71	-62%
Total UMKC Resident Graduate	1,984	1,837	1,785	1,718	1,476	-26%
Grand Total UMKC Resident Headcount	10,764	11,123	10,601	10,702	11,390	6%

**Table 4.2b Non-Resident Headcount History by Student Level, Load, and Campus, Fall 2011 to Fall 2015**

Level	2011	2012	2013	2014	2015	5 yr. Change
<b>UNIVERSITY OF MISSOURI-KANSAS CITY FULL-TIME NON-RESIDENT HEADCOUNT</b>						
Undergraduate						
Freshman & Soph DS	747	835	817	792	804	8%
Junior & Senior DS	1,202	1,153	1,173	1,195	1,130	-6%
Nondegree	80	94	104	200	126	58%
<b>Total UMKC Full-time Non-Resident Undergraduate</b>	<b>2,029</b>	<b>2,082</b>	<b>2,094</b>	<b>2,187</b>	<b>2,060</b>	<b>2%</b>
First Professional						
Dentistry (DDS)	112	117	118	131	134	20%
Law (JD)	109	109	133	127	110	1%
Medicine (MD)	139	144	158	173	157	13%
Pharmacy (Dpharm)	28	31	30	42	48	71%
<b>Total UMKC Full-time Non-Resident 1st</b>	<b>388</b>	<b>401</b>	<b>439</b>	<b>473</b>	<b>449</b>	<b>16%</b>
Graduate						
Masters & Ed. Spec.	556	576	707	973	992	78%
Doctoral	130	131	149	169	169	30%
Postbacc					1	-
Nondegree	6	6	6	6	8	33%
<b>Total UMKC Full-time Non-Resident Graduate</b>	<b>692</b>	<b>713</b>	<b>862</b>	<b>1,148</b>	<b>1,170</b>	<b>69%</b>
<b>Total UMKC Full-time Non-Resident Headcount</b>	<b>3,109</b>	<b>3,196</b>	<b>3,395</b>	<b>3,808</b>	<b>3,679</b>	<b>18%</b>
<b>UNIVERSITY OF MISSOURI-KANSAS CITY PART-TIME NON-RESIDENT HEADCOUNT</b>						
Undergraduate						
Freshman & Soph DS	111	114	92	77	75	-32%
Junior & Senior DS	385	356	424	412	399	4%
Nondegree	81	91	105	91	97	20%
<b>Total UMKC Part-time Non-Resident Undergraduate</b>	<b>577</b>	<b>561</b>	<b>621</b>	<b>580</b>	<b>571</b>	<b>-1%</b>
First Professional						
Dentistry (DDS)	0	0	0	0	0	-
Law (JD)	7	9	10	11	15	114%
Medicine (MD)	0	0	0	0	0	-
Pharmacy (Dpharm)	0	0	0	0	0	-
<b>Total UMKC Part-time Non-Resident 1st</b>	<b>7</b>	<b>9</b>	<b>10</b>	<b>11</b>	<b>15</b>	<b>114%</b>
Graduate						
Masters & Ed. Spec.	653	687	661	597	613	-6%
Doctoral	301	286	302	304	318	6%
Postbacc					2	-
Nondegree	62	128	128	144	97	56%
<b>Total UMKC Part-time Non-Resident Graduate</b>	<b>1,016</b>	<b>1,101</b>	<b>1,091</b>	<b>1,045</b>	<b>1,030</b>	<b>1%</b>
<b>Total UMKC Part-time Non-Resident Headcount</b>	<b>1,600</b>	<b>1,671</b>	<b>1,722</b>	<b>1,636</b>	<b>1,616</b>	<b>1%</b>
<b>UNIVERSITY OF MISSOURI-KANSAS CITY TOTAL NON-RESIDENT HEADCOUNT</b>						
Undergraduate						
Freshman & Soph DS	858	949	909	869	879	2%
Junior & Senior DS	1,587	1,509	1,597	1,607	1,529	-4%
Nondegree	161	185	209	291	223	39%
<b>Total UMKC Non-Resident Undergraduate</b>	<b>2,606</b>	<b>2,643</b>	<b>2,715</b>	<b>2,767</b>	<b>2,631</b>	<b>1%</b>
First Professional						
Dentistry (DDS)	112	117	118	131	134	20%
Law (JD)	116	118	143	138	125	8%
Medicine (MD)	139	144	158	173	157	13%
Pharmacy (Dpharm)	28	31	30	42	48	71%
<b>Total UMKC Non-Resident 1st Professional</b>	<b>395</b>	<b>410</b>	<b>449</b>	<b>484</b>	<b>464</b>	<b>17%</b>
Graduate						
Masters & Ed. Spec.	1,209	1,263	1,368	1,570	1,605	33%
Doctoral	431	417	451	473	487	13%
Postbacc					3	
Nondegree	68	134	134	150	105	54%
<b>Total UMKC Non-Resident Graduate</b>	<b>1,708</b>	<b>1,814</b>	<b>1,953</b>	<b>2,193</b>	<b>2,200</b>	<b>29%</b>
<b>Grand Total UMKC Non-Resident Headcount</b>	<b>4,709</b>	<b>4,867</b>	<b>5,117</b>	<b>5,444</b>	<b>5,295</b>	<b>12%</b>

**Table 4.3a Resident Headcount History by Student Level, Load, and Campus, Fall 2011 to Fall 2015**

<b>Level</b>	<b>2011</b>	<b>2012</b>	<b>2013</b>	<b>2014</b>	<b>2015</b>	<b>5 yr. Change</b>
<b>MISSOURI S&amp;T FULL-TIME RESIDENT HEADCOUNT</b>						
Undergraduate						
Freshman & Soph DS	1,780	1,752	1,817	1,970	2,194	23%
Junior & Senior DS	2,313	2,401	2,553	2,669	2,783	20%
Nondegree	1	1	3	6	6	500%
Total MO S&T Full-time Resident Undergraduate	4,094	4,154	4,373	4,645	4,983	22%
Graduate						
Masters & Ed. Spec.	199	153	129	126	139	-30%
Doctoral	79	66	75	79	78	-1%
Nondegree	0	0	0	0	0	-
Total MO S&T Full-time Resident Graduate	278	219	204	205	217	-22%
Total Missouri S&T Full-time Resident Headcount	4,372	4,373	4,577	4,850	5,200	19%
<b>MISSOURI S&amp;T PART-TIME RESIDENT HEADCOUNT</b>						
Undergraduate						
Freshman & Soph DS	68	68	64	77	72	6%
Junior & Senior DS	295	356	392	410	429	45%
Nondegree	47	51	40	20	21	-55%
Total MO S&T Part-time Resident Undergraduate	410	475	496	507	522	27%
Graduate						
Masters & Ed. Spec.	256	238	243	233	233	-9%
Doctoral	43	40	37	34	34	-21%
Nondegree	5	6	5	5	2	-60%
Total MO S&T Part-time Resident Graduate	304	284	285	272	269	-12%
Total Missouri S&T Part-time Resident Headcount	714	759	781	779	791	11%
<b>MISSOURI S&amp;T TOTAL RESIDENT HEADCOUNT</b>						
Undergraduate						
Freshman & Soph DS	1,848	1,820	1,881	2,047	2,266	23%
Junior & Senior DS	2,608	2,757	2,945	3,079	3,212	23%
Nondegree	48	52	43	26	27	-44%
Total MO S&T Resident Undergraduate	4,504	4,629	4,869	5,152	5,505	22%
Graduate						
Masters & Ed. Spec.	455	391	372	359	372	-18%
Doctoral	122	106	112	113	112	-8%
Nondegree	5	6	5	5	2	-60%
Total MO S&T Resident Graduate	582	503	489	477	486	-16%
Grand Total Missouri S&T Resident Headcount	5,086	5,132	5,358	5,629	5,991	18%

**Table 4.3b Non-Resident Headcount History by Student Level, Load, and Campus, Fall 2011 to Fall 2015**  
5 yr.

<b>Level</b>	<b>2011</b>	<b>2012</b>	<b>2013</b>	<b>2014</b>	<b>2015</b>	<b>Change</b>
<b>MISSOURI S&amp;T FULL-TIME NON-RESIDENT HEADCOUNT</b>						
Undergraduate						
Freshman & Soph DS	458	506	493	489	509	11%
Junior & Senior DS	582	569	571	617	611	5%
Nondegree	9	31	35	74	65	622%
Undergraduate	1,049	1,106	1,099	1,180	1,185	13%
Graduate						
Masters & Ed. Spec.	447	457	597	681	584	31%
Doctoral	361	362	390	416	434	20%
Nondegree	0	1	0	0	0	-
Total MO S&T Full-time Non-Resident Graduate	808	820	987	1,097	1,018	26%
Total Missouri S&T Full-time Non-Resident Headcount	1,857	1,926	2,086	2,277	2,203	19%
<b>MISSOURI S&amp;T PART-TIME NON-RESIDENT HEADCOUNT</b>						
Undergraduate						
Freshman & Soph DS	21	24	37	60	41	95%
Junior & Senior DS	87	76	137	126	108	24%
Nondegree	10	6	3	2	0	-100%
Total MO S&T Part-time Non-Resident	118	106	177	188	149	26%
Graduate						
Masters & Ed. Spec.	408	409	445	484	493	21%
Doctoral	45	49	53	54	46	2%
Nondegree	7	23	10	8	4	-43%
Total MO S&T Part-time Non-Resident Graduate	460	481	508	546	543	18%
Total Missouri S&T Part-time Non-Resident Headcount	578	587	685	734	692	20%
<b>MISSOURI S&amp;T TOTAL NON-RESIDENT HEADCOUNT</b>						
Undergraduate						
Freshman & Soph DS	479	530	530	549	550	15%
Junior & Senior DS	669	645	708	743	719	7%
Nondegree	19	37	38	76	65	242%
Total MO S&T Non-Resident Undergraduate	1,167	1,212	1,276	1,368	1,334	14%
Graduate						
Masters & Ed. Spec.	855	866	1,042	1,165	1,077	26%
Doctoral	406	411	443	470	480	18%
Nondegree	7	24	10	8	4	-43%
Total MO S&T Non-Resident Graduate	1,268	1,301	1,495	1,643	1,561	23%
Grand Total Missouri S&T Non-Resident Headcount	2,435	2,513	2,771	3,011	2,895	19%

**Table 4.4a Resident Headcount History by Student Level, Load, and Campus, Fall 2011 to Fall 2015**

<b>Level</b>	<b>2011</b>	<b>2012</b>	<b>2013</b>	<b>2014</b>	<b>2015</b>	<b>5 yr. Change</b>
<b>UNIVERSITY OF MISSOURI-ST. LOUIS FULL-TIME RESIDENT HEADCOUNT</b>						
Undergraduate						
Freshman & Soph DS	1,578	1,457	1,347	1,321	1,257	-20%
Junior & Senior DS	3,553	3,705	3,719	3,784	3,568	0%
Nondegree	147	148	191	175	138	-6%
<b>Total UMSL Full-time Resident Undergraduate</b>	<b>5,278</b>	<b>5,310</b>	<b>5,257</b>	<b>5,280</b>	<b>4,963</b>	<b>-6%</b>
First Professional						
Optometry (OD)	65	60	64	70	75	15%
<b>Total UMSL Full-time Resident 1st Professional</b>	<b>65</b>	<b>60</b>	<b>64</b>	<b>70</b>	<b>75</b>	<b>15%</b>
Graduate						
Masters & Ed. Spec.	454	389	341	367	375	-17%
Doctoral	131	125	128	111	135	3%
Postbacc					10	-
Nondegree	34	28	19	13	4	-88%
<b>Total UMSL Full-time Resident Graduate</b>	<b>619</b>	<b>542</b>	<b>488</b>	<b>491</b>	<b>524</b>	<b>-15%</b>
<b>Total UMSL Full-time Resident Headcount</b>	<b>5,962</b>	<b>5,912</b>	<b>5,809</b>	<b>5,841</b>	<b>5,562</b>	<b>-7%</b>
<b>UNIVERSITY OF MISSOURI-ST. LOUIS PART-TIME RESIDENT HEADCOUNT</b>						
Undergraduate						
Freshman & Soph DS	411	347	350	324	249	-39%
Junior & Senior DS	2,626	2,560	2,586	2,587	2,330	-11%
Nondegree	3,897	4,142	4,383	4,678	5,071	30%
<b>Total UMSL Part-time Resident Undergraduate</b>	<b>6,934</b>	<b>7,049</b>	<b>7,319</b>	<b>7,589</b>	<b>7,650</b>	<b>10%</b>
First Professional						
Optometry (OD)	0	0	0	0	0	-
<b>Total UMSL Part-time Resident 1st Professional</b>	<b>0</b>	<b>0</b>	<b>0</b>	<b>0</b>	<b>0</b>	<b>-</b>
Graduate						
Masters & Ed. Spec.	1,676	1,470	1,474	1,429	1,413	-16%
Doctoral	269	274	285	297	262	-3%
Postbacc					73	-
Nondegree	164	164	154	183	99	-40%
<b>Total UMSL Part-time Resident Graduate</b>	<b>2,109</b>	<b>1,908</b>	<b>1,913</b>	<b>1,909</b>	<b>1,847</b>	<b>-12%</b>
<b>Total UMSL Part-time Resident Headcount</b>	<b>9,043</b>	<b>8,957</b>	<b>9,232</b>	<b>9,498</b>	<b>9,497</b>	<b>5%</b>
<b>UNIVERSITY OF MISSOURI-ST. LOUIS TOTAL RESIDENT HEADCOUNT</b>						
Undergraduate						
Freshman & Soph DS	1,989	1,804	1,697	1,645	1,506	-24%
Junior & Senior DS	6,179	6,265	6,305	6,371	5,898	-5%
Nondegree	4,044	4,290	4,574	4,853	5,209	29%
<b>Total UMSL Resident Undergraduate</b>	<b>12,212</b>	<b>12,359</b>	<b>12,576</b>	<b>12,869</b>	<b>12,613</b>	<b>3%</b>
First Professional						
Optometry (OD)	65	60	64	70	75	15%
<b>Total UMSL Resident 1st Professional</b>	<b>65</b>	<b>60</b>	<b>64</b>	<b>70</b>	<b>75</b>	<b>15%</b>
Graduate						
Masters & Ed. Spec.	2,130	1,859	1,815	1,796	1,788	-16%
Doctoral	400	399	413	408	397	-1%
Postbacc					83	-
Nondegree	198	192	173	196	103	-48%
<b>Total UMSL Resident Graduate</b>	<b>2,728</b>	<b>2,450</b>	<b>2,401</b>	<b>2,400</b>	<b>2,371</b>	<b>-13%</b>
<b>Grand Total UMSL Resident Headcount</b>	<b>15,005</b>	<b>14,869</b>	<b>15,041</b>	<b>15,339</b>	<b>15,059</b>	<b>0%</b>

**Table 4.4b Non-Resident Headcount History by Student Level, Load, and Campus, Fall 2011 to Fall 2015**  
5 yr.

<b>Level</b>	<b>2011</b>	<b>2012</b>	<b>2013</b>	<b>2014</b>	<b>2015</b>	<b>Change</b>
<b>UNIVERSITY OF MISSOURI-ST. LOUIS FULL-TIME NON-RESIDENT HEADCOUNT</b>						
Undergraduate						
Freshman & Soph DS	306	335	308	304	281	-8%
Junior & Senior DS	391	388	427	438	435	11%
Nondegree	39	36	43	49	32	-18%
Total UMSL Full-time Non-Resident Undergraduate	736	759	778	791	748	2%
First Professional						
Optometry (OD)	107	108	108	106	97	-9%
Professional	107	108	108	106	97	-9%
Graduate						
Masters & Ed. Spec.	143	170	166	142	169	18%
Doctoral	137	117	122	124	130	-5%
Postbacc					3	-
Nondegree	6	5	5	11	3	-50%
Total UMSL Full-time Non-Resident Graduate	286	292	293	277	305	7%
Total UMSL Full-time Non-Resident Headcount	1,129	1,159	1,179	1,174	1,150	2%
<b>UNIVERSITY OF MISSOURI-ST. LOUIS PART-TIME NON-RESIDENT HEADCOUNT</b>						
Undergraduate						
Freshman & Soph DS	27	30	20	15	17	-37%
Junior & Senior DS	139	159	171	163	138	-1%
Nondegree	37	28	24	36	29	-22%
Total UMSL Part-time Non-Resident Undergraduate	203	217	215	214	184	-9%
First Professional						
Optometry (OD)	0	0	0	0	0	-
Professional	0	0	0	0	0	-
Graduate						
Masters & Ed. Spec.	399	387	320	289	276	-31%
Doctoral	34	41	39	42	52	53%
Postbacc					6	-
Nondegree	39	32	15	14	11	-72%
Total UMSL Part-time Non-Resident Graduate	472	460	374	345	345	-27%
Total UMSL Part-time Non-Resident Headcount	675	677	589	559	529	-22%
<b>UNIVERSITY OF MISSOURI-ST. LOUIS TOTAL NON-RESIDENT HEADCOUNT</b>						
Undergraduate						
Freshman & Soph DS	333	365	328	319	298	-11%
Junior & Senior DS	530	547	598	601	573	8%
Nondegree	76	64	67	85	61	-20%
Total UMSL Non-Resident Undergraduate	939	976	993	1,005	932	-1%
First Professional						
Optometry (OD)	107	108	108	106	97	-9%
Total UMSL Non-Resident 1st Professional	107	108	108	106	97	-9%
Graduate						
Masters & Ed. Spec.	542	557	486	431	445	-18%
Doctoral	171	158	161	166	182	6%
Postbacc					9	-
Nondegree	45	37	20	25	14	-69%
Total UMSL Non-Resident Graduate	758	752	667	622	650	-14%
Grand Total UMSL Non-Resident Headcount	1,804	1,836	1,768	1,733	1,679	-7%

**Table 5. Headcount Students by Gender and Ethnicity, Fall 2015**

<b>Data - Classification</b>	<b><u>MU</u></b>		<b><u>UMKC</u></b>		<b><u>MO S&amp;T</u></b>		<b><u>UMSL</u></b>		<b><u>TOTAL</u></b>	
	<b>HC</b>	<b>%</b>	<b>HC</b>	<b>%</b>	<b>HC</b>	<b>%</b>	<b>HC</b>	<b>%</b>	<b>HC</b>	<b>%</b>
<b>A. Gender</b>										
Men										
First-time DS College	2,937	47%	404	39%	1141	77%	222	43%	4,704	51%
Other Undergraduate	10,444	48%	4,407	43%	4,101	77%	5,419	42%	24,371	49%
First Professional	518	43%	880	50%	0	-	70	41%	1,468	47%
Graduate	<u>2,821</u>	44%	<u>1,758</u>	48%	<u>1,603</u>	78%	<u>1,032</u>	34%	<u>7,214</u>	48%
Total	16,720	47%	7,449	45%	6,845	77%	6,743	40%	37,757	49%
Women										
First-time DS College	3,254	53%	645	61%	346	23%	294	57%	4,539	49%
Other Undergraduate	11,156	52%	5,787	57%	1,251	23%	7,610	58%	25,804	51%
First Professional	675	57%	886	50%	0	-	102	59%	1,663	53%
Graduate	<u>3,619</u>	56%	<u>1,918</u>	52%	<u>444</u>	22%	<u>1,989</u>	66%	<u>7,970</u>	52%
Total	18,704	53%	9,236	55%	2,041	23%	9,995	60%	39,976	51%
<b>Grand Total</b>	<b>35,424</b>		<b>16,685</b>		<b>8,886</b>		<b>16,738</b>		<b>77,733</b>	

**Table 5. Headcount Students by Gender and Ethnicity (continued)**

Data - Classification	MU		UMKC		MO S&T		UMSL		TOTAL	
	HC	%	HC	%	HC	%	HC	%	HC	%
<b>B. Ethnicity *</b>										
Am Indian/Alaskan Native										
First-time DS College	17	0%	1	0%	10	1%	3	1%	31	0%
Other Undergraduate	32	0%	34	0%	15	0%	49	0%	130	0%
First Professional	2	0%	7	0%	0	-	1	1%	10	0%
Graduate	<u>13</u>	0%	<u>13</u>	0%	<u>4</u>	0%	<u>7</u>	0%	<u>37</u>	0%
Total	64	0%	55	0%	29	0%	60	0%	208	0%
Asian										
First-time DS College	154	2%	119	12%	42	3%	16	3%	331	4%
Other Undergraduate	503	2%	536	5%	166	3%	589	5%	1,794	4%
First Professional	25	2%	275	16%	0	-	8	5%	308	10%
Graduate	<u>97</u>	2%	<u>89</u>	3%	<u>60</u>	3%	<u>92</u>	3%	<u>338</u>	2%
Total	779	2%	1,019	6%	268	3%	705	4%	2,771	4%
Pacific Islander										
First-time DS College	3	0%	2	0%	0	0%	1	0%	6	0%
Other Undergraduate	10	0%	10	0%	5	0%	15	0%	40	0%
First Professional	1	0%	1	0%	0	-	0	0%	2	0%
Graduate	<u>1</u>	0%	<u>1</u>	0%	<u>2</u>	0%	<u>3</u>	0%	<u>7</u>	0%
Total	15	0%	14	0%	7	0%	19	0%	55	0%
African-American Non-Hispanic										
First-time DS College	509	8%	122	12%	44	3%	97	20%	772	8%
Other Undergraduate	1,747	8%	1,223	13%	193	4%	1,768	14%	4,931	10%
First Professional	38	4%	87	5%	0	-	5	3%	130	4%
Graduate	<u>248</u>	4%	<u>236</u>	7%	<u>58</u>	3%	<u>430</u>	15%	<u>972</u>	7%
Total	2,542	7%	1,668	10%	295	3%	2,300	14%	6,805	9%
Hispanic										
First-time DS College	260	4%	110	11%	54	4%	21	4%	445	5%
Other Undergraduate	733	3%	739	8%	156	3%	319	3%	1,947	4%
First Professional	29	3%	85	5%	0	-	2	1%	116	4%
Graduate	<u>191</u>	3%	<u>137</u>	4%	<u>61</u>	3%	<u>75</u>	3%	<u>464</u>	3%
Total	1,213	3%	1,071	7%	271	3%	417	3%	2,972	4%
White Non-Hispanic										
First-time DS College	4,851	79%	559	54%	1,237	85%	295	60%	6,942	76%
Other Undergraduate	16,901	79%	6,369	65%	4,050	79%	9,241	74%	36,561	75%
First Professional	976	90%	1,176	70%	0	-	143	86%	2,295	78%
Graduate	<u>4,175</u>	67%	<u>1,906</u>	54%	<u>844</u>	43%	<u>1,983</u>	70%	<u>8,908</u>	61%
Total	26,903	77%	10,010	63%	6,131	72%	11,662	73%	54,706	72%
Nonresident Alien										
First-time DS College	165	3%	54	5%	23	2%	41	8%	283	3%
Other Undergraduate	931	4%	447	5%	424	8%	268	2%	2,070	4%
First Professional	2	0%	13	1%	0	-	3	2%	18	1%
Graduate	<u>1,409</u>	23%	<u>1,094</u>	31%	<u>932</u>	47%	<u>210</u>	7%	<u>3,645</u>	25%
Total	2,507	7%	1,608	10%	1,379	16%	522	3%	6,016	8%
Two or More Race										
First-time DS College	217	4%	62	6%	39	3%	20	4%	338	4%
Other Undergraduate	607	3%	392	4%	139	3%	219	2%	1,357	3%
First Professional	11	1%	48	3%	0	-	4	2%	63	2%
Graduate	<u>114</u>	2%	<u>39</u>	1%	<u>12</u>	1%	<u>31</u>	1%	<u>196</u>	1%
Total	949	3%	541	3%	190	2%	274	2%	1,954	3%
<b>Grand Total</b>	<b>34,972</b>		<b>15,986</b>		<b>8,570</b>		<b>15,959</b>		<b>75,487</b>	

\* Note: Students not reporting ethnicity (Unknown) were removed from the distribution.

Unknown

First-time DS College	15	20	38	95
Other Undergraduate	136	444	204	1,345
First Professional	109	74	0	189
Graduate	<u>192</u>	<u>161</u>	<u>74</u>	<u>617</u>
Total	452	699	316	2,246