

**The 2005-2006 Report of Degrees Awarded  
by the University of Missouri**

Randy Sade  
Assistant Research Analyst

Office of Institutional Research and Planning  
University of Missouri System

September 2006

IR&P 2006, Report 7

<http://www.umsystem.edu/ums/departments/fa/planning/>

# The 2005-2006 Report of Degrees Awarded by the University of Missouri

## Executive Summary

This report includes graphs and tables of the annual number of degrees awarded by the University of Missouri System from fiscal years 1997 to 2006. The long-term trend of degrees awarded is shown graphically by campus (Figure 1) and by degree level within each campus (Figure 2).

Table 1 of this report provides the number of awards by campus and level and by campus college (Tables 2.1 - 2.4) from fiscal years 1997 to 2006 as well as average change for 3, 5, and 10-year periods. In addition, Table 1, and Tables 2.1 - 2.4 provide percent changes in FY 2006 relative to the 10-year average.

Degrees awarded are reported by department in the Appendix in the *Department Detail Summary* (Tables 3.1 - 3.4). The official annual reporting period is from July 1 to June 30 of the following calendar year. For example, FY06 includes summer and fall graduates from 2005 and the spring graduates of 2006.

The highlights of the report include:

- The University of Missouri System awarded a record 13,323 degrees, a 14% growth in FY 2006 relative to the 10-year average. (Table 1)
- Relative to the 10-year average, the number of FY 2006 bachelors degrees for the University of Missouri System increased 13%, masters degrees a 17% increase, and graduate certificates increased 138%.
- Comparing FY 2006 degrees to the 10-year averages, bachelors increased most notable at UM-Kansas City (21%) and UM-Columbia (17%); masters increased greatly at UM-Columbia (24%) and UM-St. Louis (16%); and doctorates increased significantly at UM-St. Louis (44%) and UM-Rolla (35%).

Notes Regarding Use of the Report:

- Please note the axis scale range when considering graphs. It may change from campus to campus.
- Previous year's tables may differ because tables in the report have been changed from the use of running averages to 3, 5, and 10 year averages.
- This report includes a 10-year average as related to FY 2006.
- Source for this report is the printed Completions Report.
- This report reflects the official counts of degrees awarded, as of July 1 for the preceding year that were submitted to the state and federal government.

## Technical Notes for Use with the Report:

### Footnotes

- Footnotes are of the utmost importance in reading tables in the appendix.

### Name Changes

- If a program name changes, the report history is changed to reflect the new name and is footnoted.
- If a degree name or description is changed, the report history is changed to the new description and is footnoted.
- If a department name changes, the report history is changed to the new description and NO footnotes are made.
- If a school or college changes, the report history is changed to the new description and NO footnotes are made.

### Program Moves

- If a program moves to another department or school, the data are reported as is – that is, report history is not changed and the new data are reported in the new department. A new footnote is added, i.e., program is moving. Eventually – when there are no more degrees for the old department, the old department is hidden in the report.
- If a program moves to another school or college, the data are reported as is – that is, report history is not changed and the new data are reported in the new school or college. A footnote is added, i.e., program is moving. Eventually – when there are no more degrees for the old department, the old department is hidden in the report.

Figure 1: Rate of Change in Total Degrees Awarded by Campus, since 1997

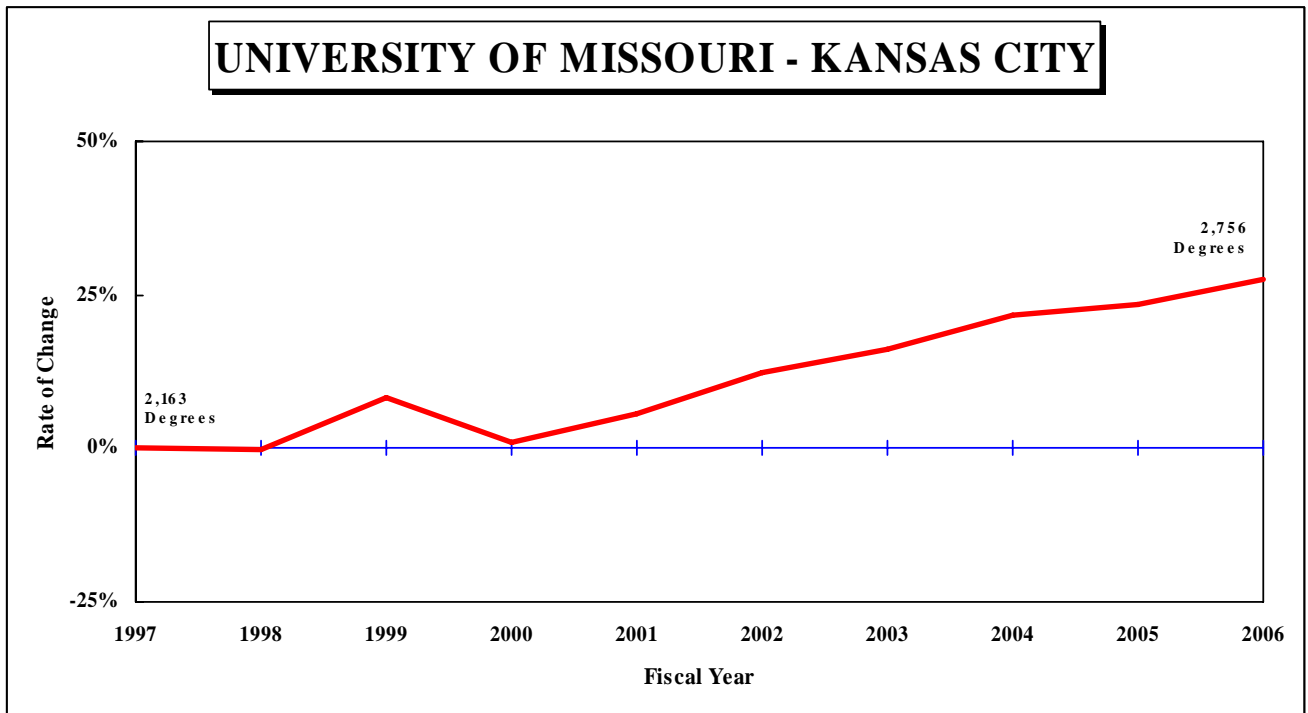
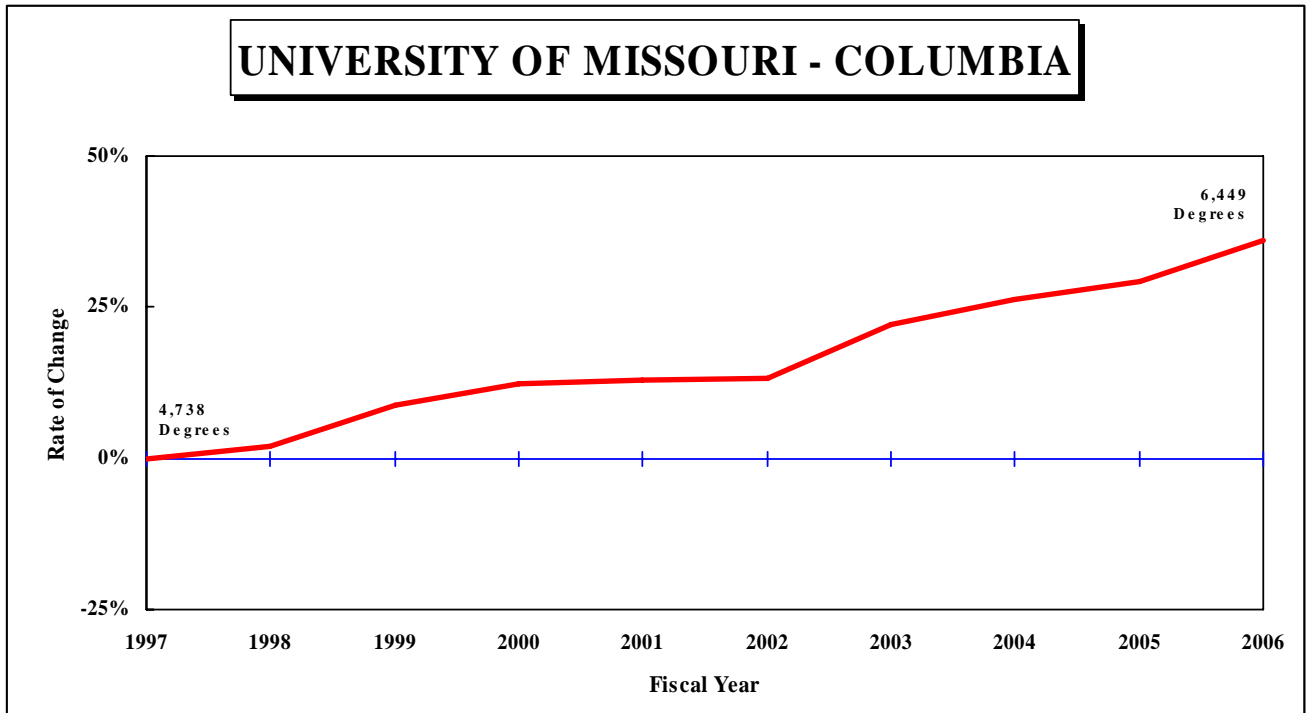


Figure 1: Rate of Change in Total Degrees Awarded by Campus, since 1997  
 - Continued

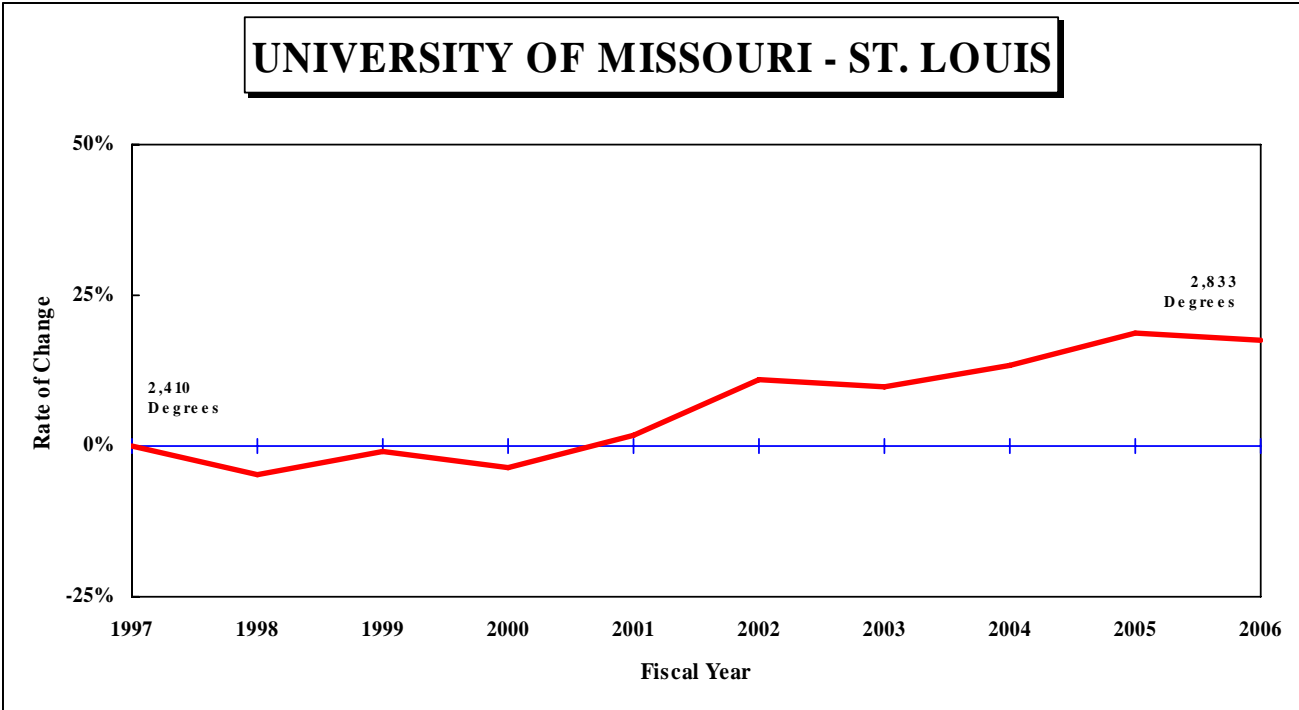
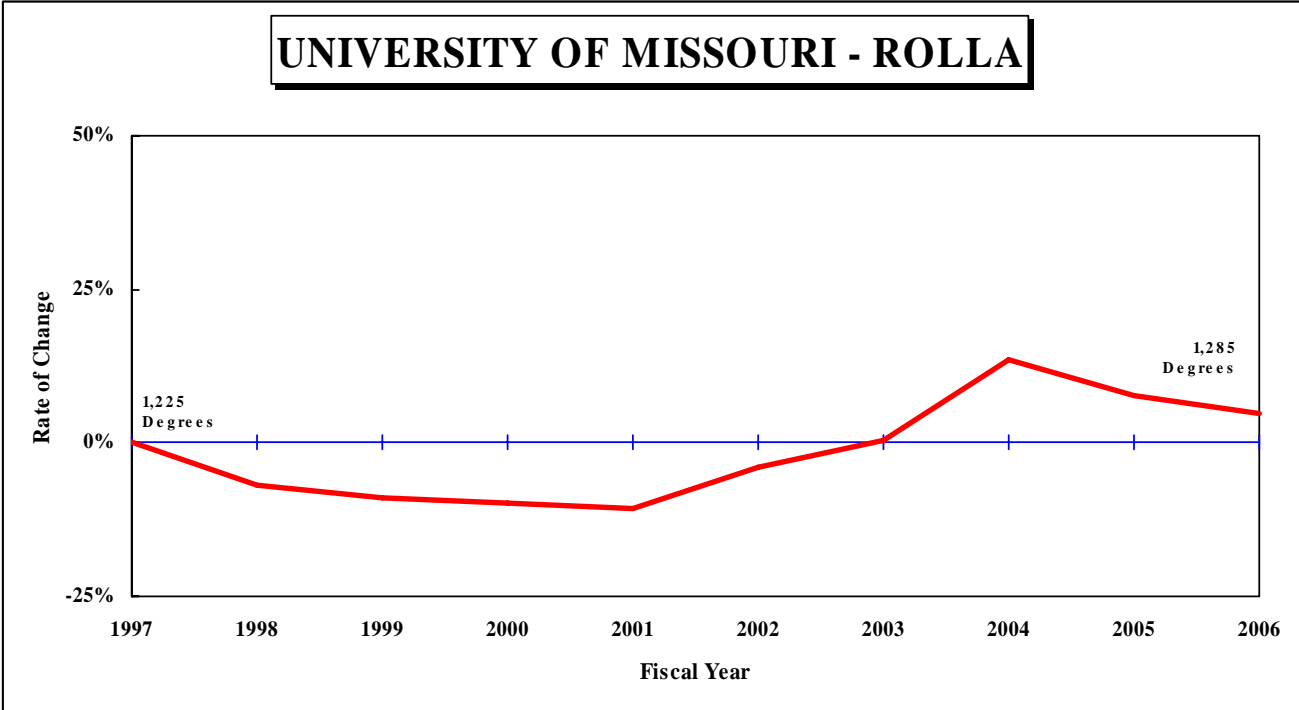


Figure 1: Rate of Change in Total Degrees Awarded by Campus, since 1997  
- Continued

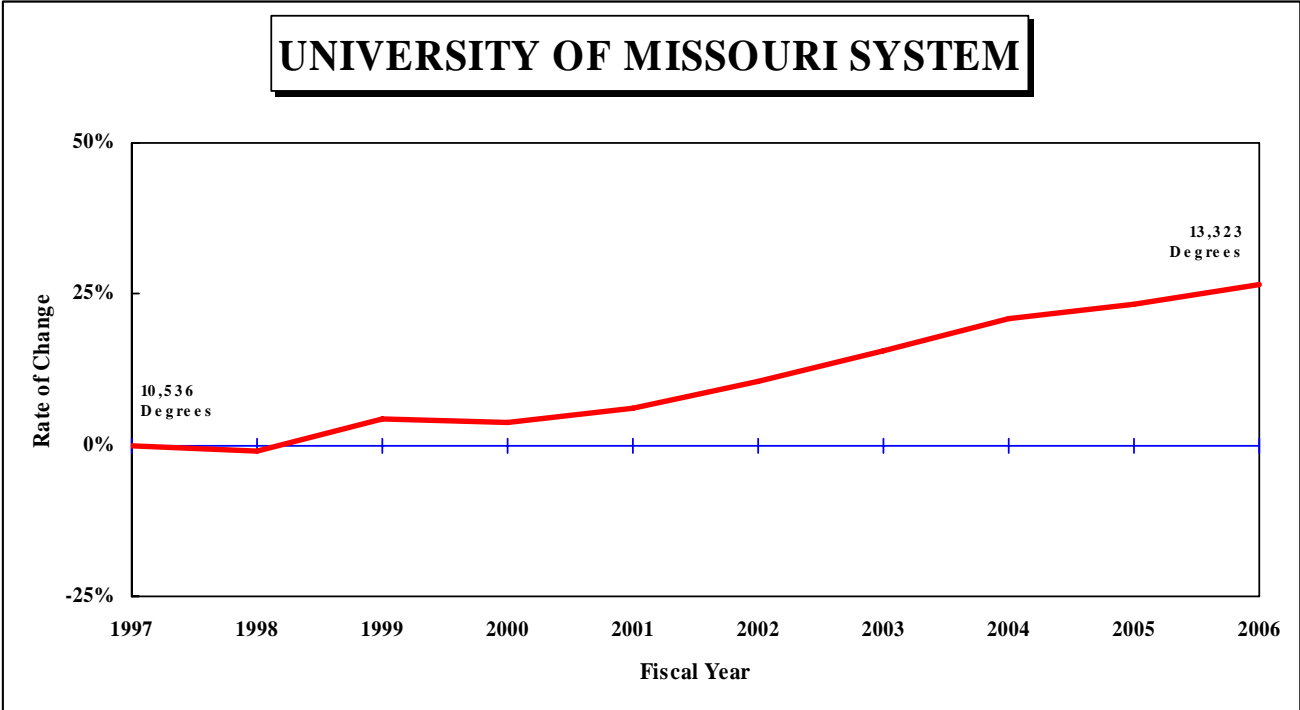


Figure 2: Rate of Change in Total Degrees Awarded by Campus, since 1997

UNIVERSITY OF MISSOURI - COLUMBIA

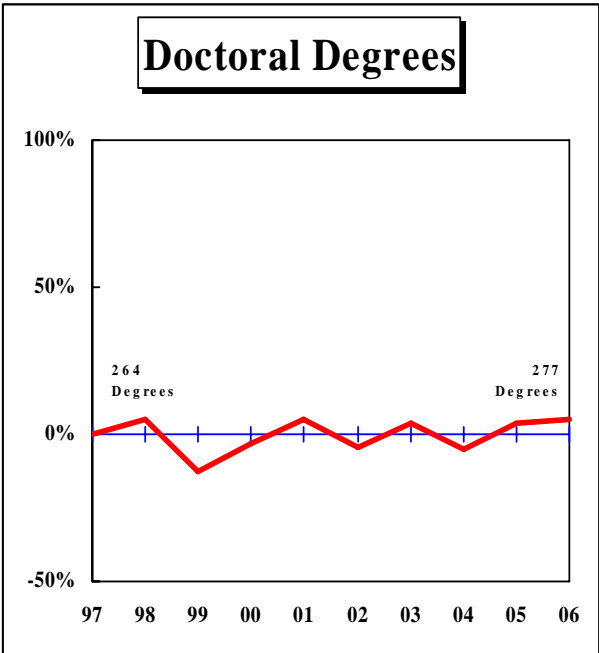
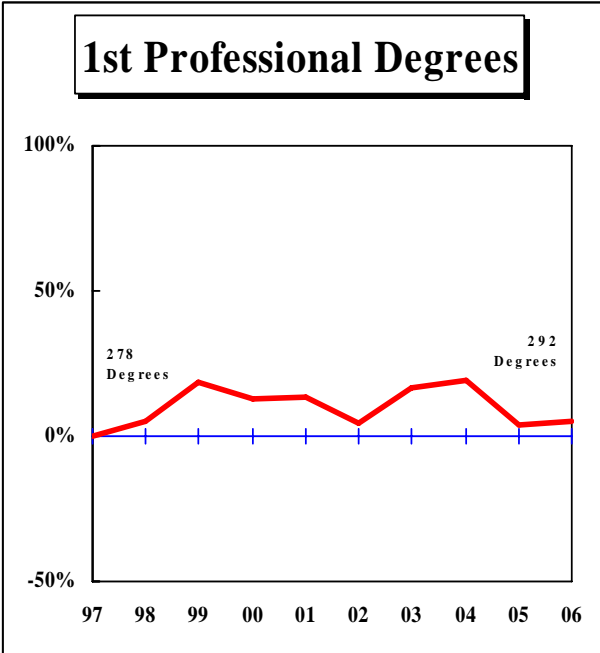
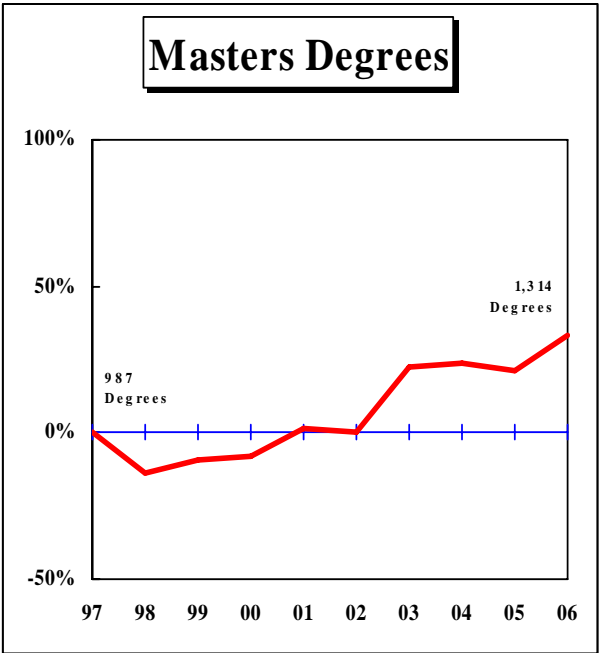
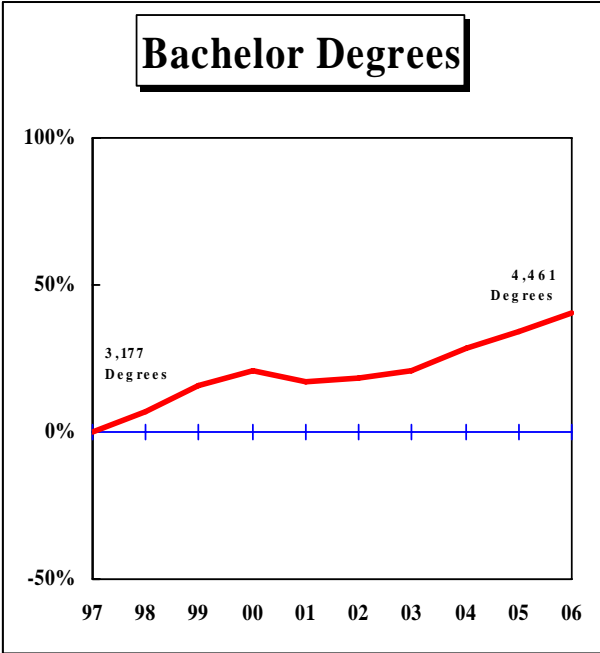


Figure 2: Rate of Change in Total Degrees Awarded by Campus, since 1997  
 - Continued

UNIVERSITY OF MISSOURI - KANSAS CITY

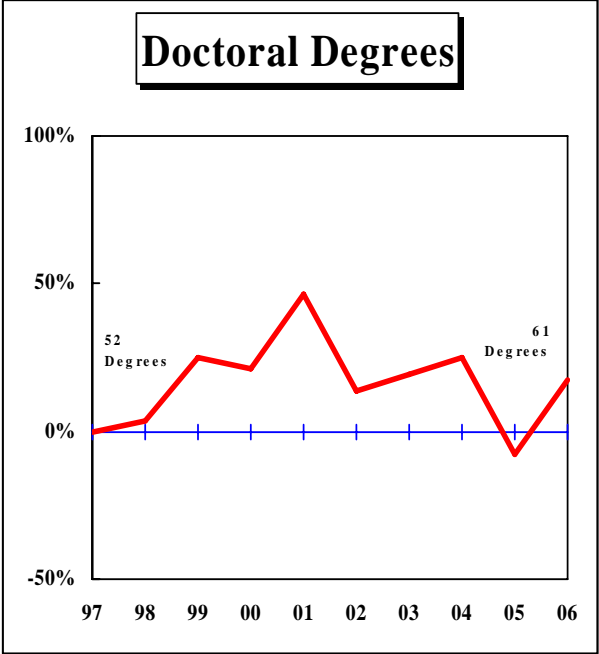
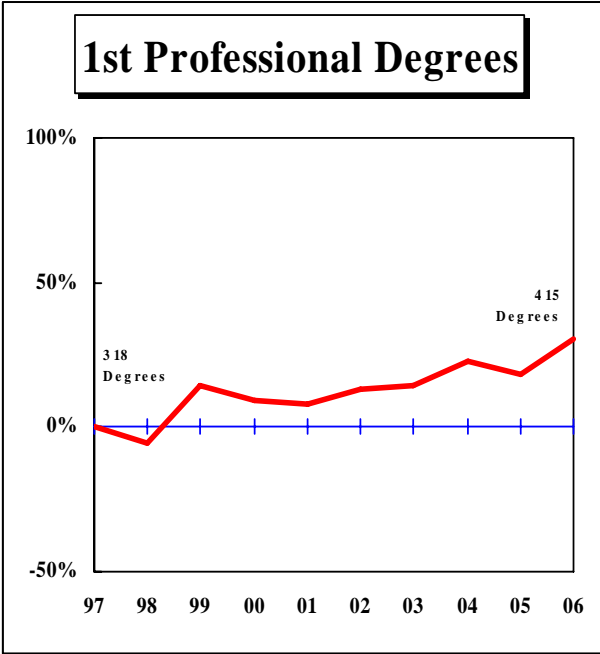
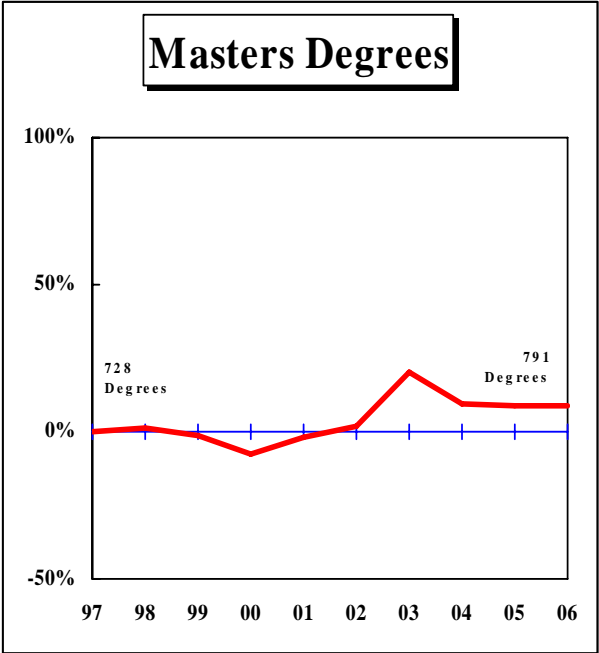
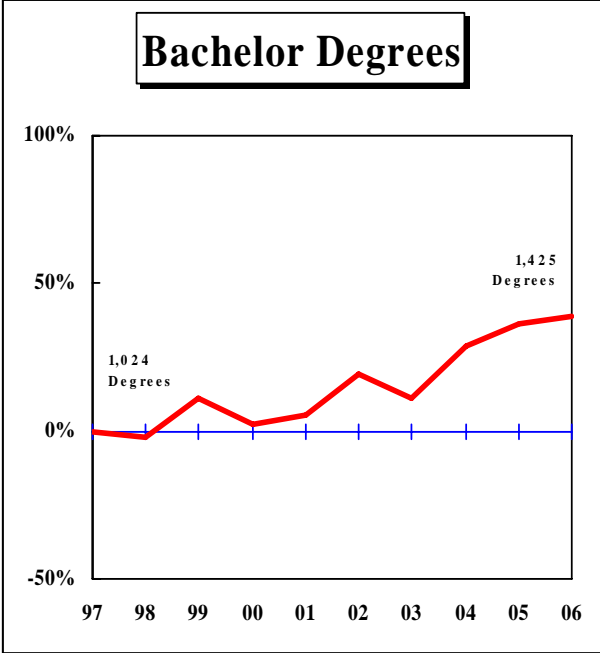




Figure 2: Rate of Change in Total Degrees Awarded by Campus, since 1997  
 - Continued

UNIVERSITY OF MISSOURI - ROLLA

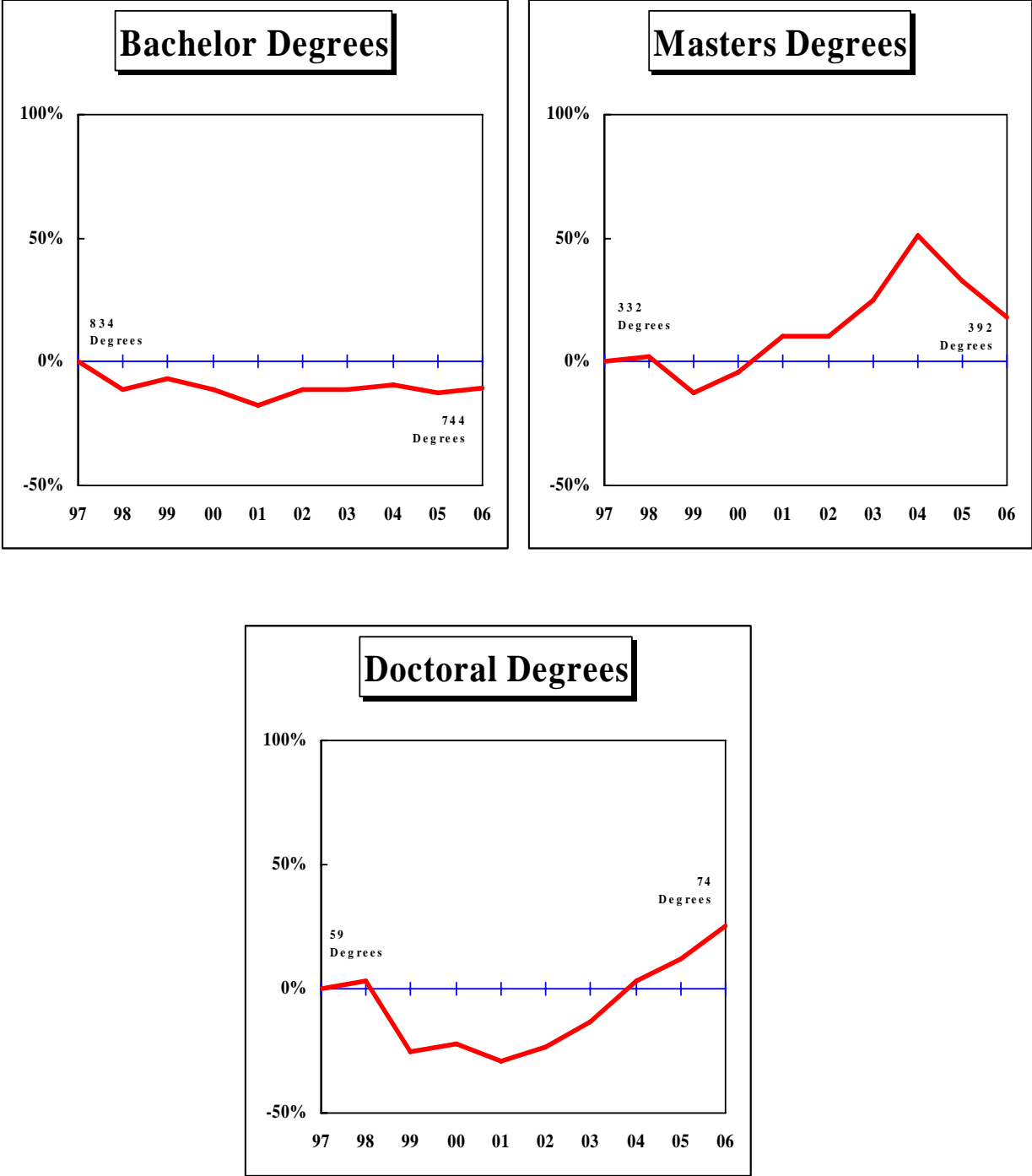


Figure 2: Rate of Change in Total Degrees Awarded by Campus, since 1997  
 - Continued

UNIVERSITY OF MISSOURI – ST. LOUIS

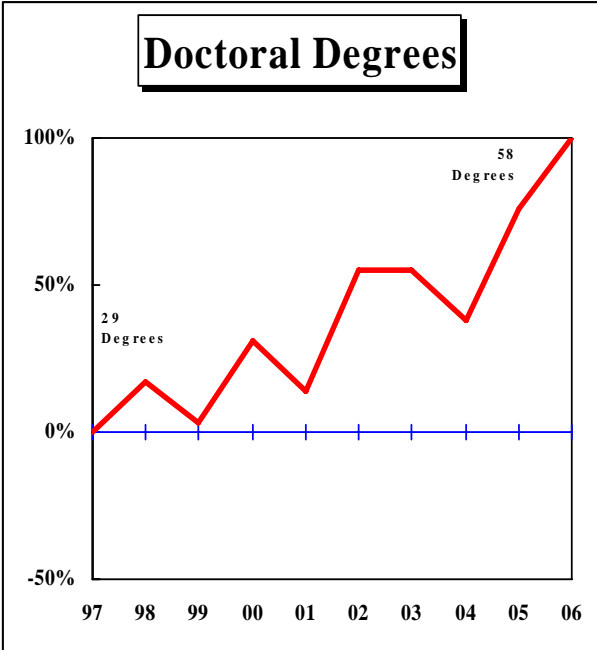
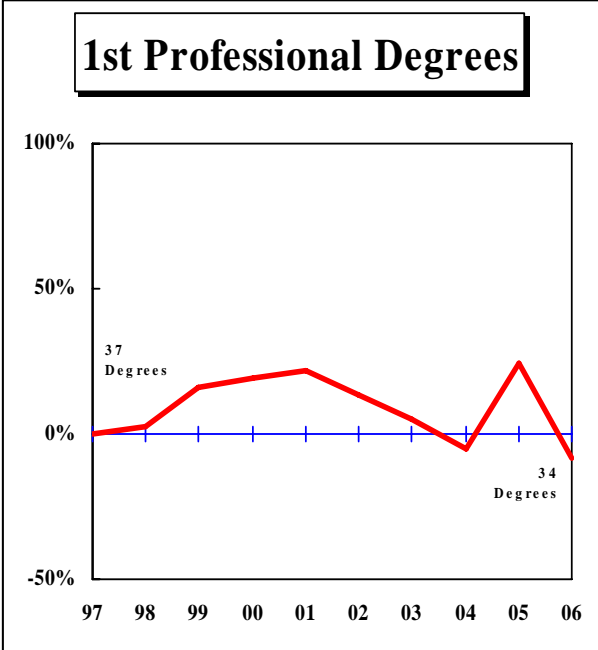
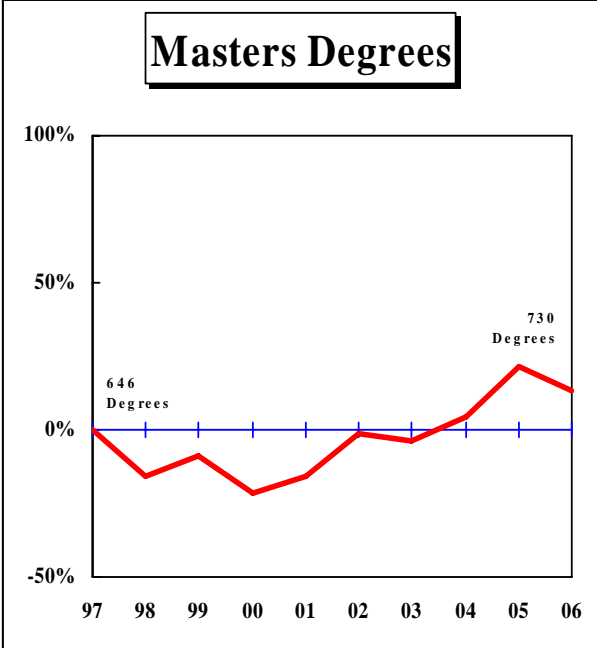
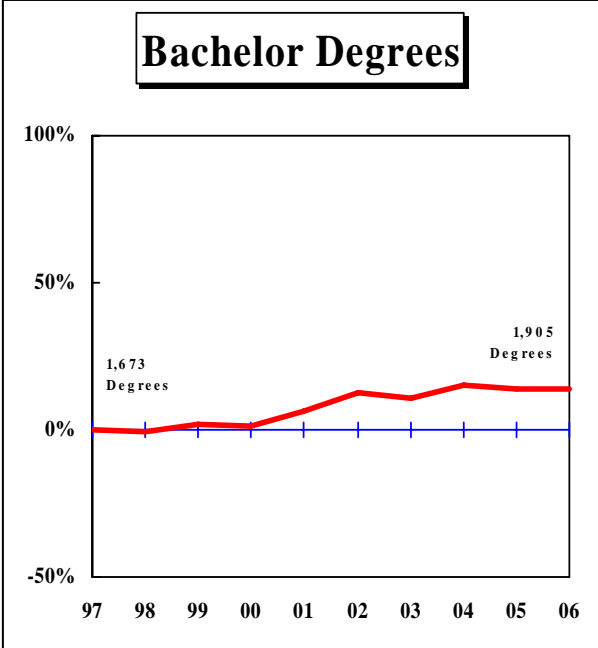


Figure 2: Rate of Change in Total Degrees Awarded by Campus, since 1997  
 - Continued

UNIVERSITY OF MISSOURI SYSTEM

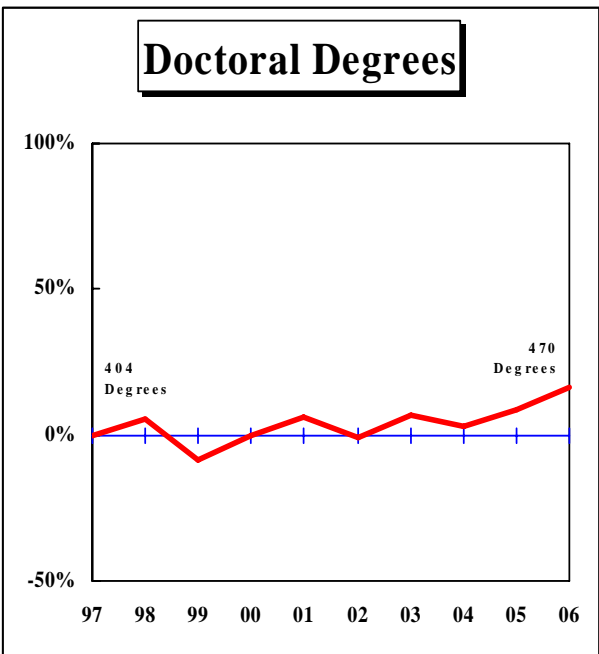
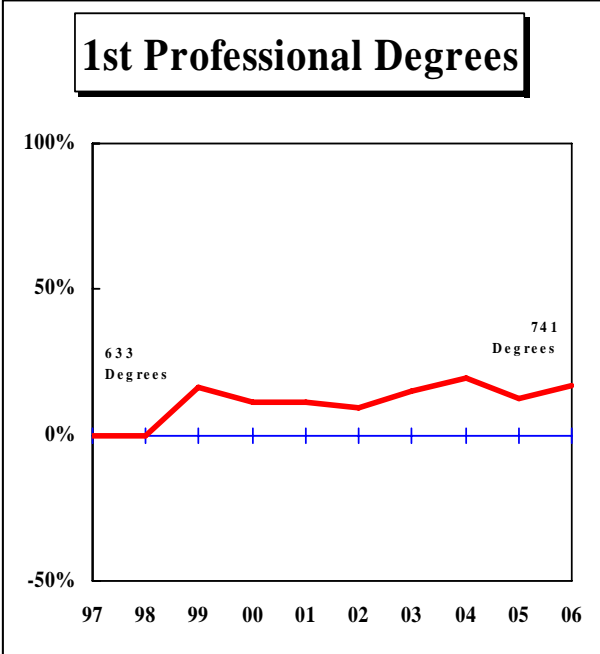
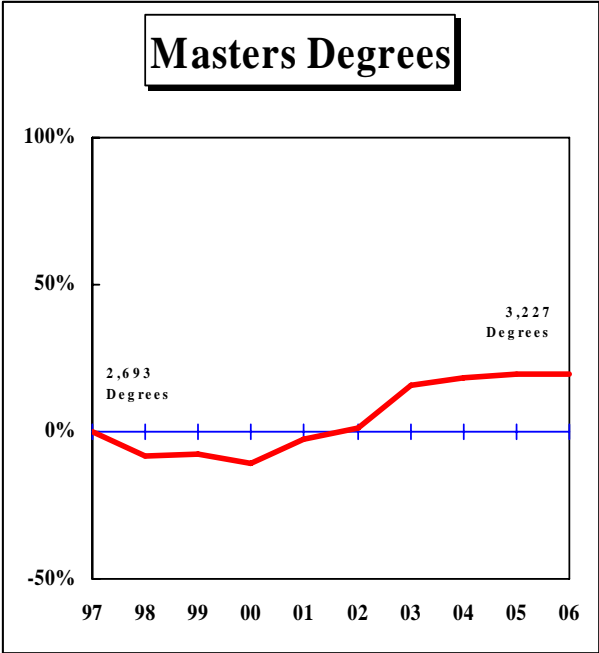
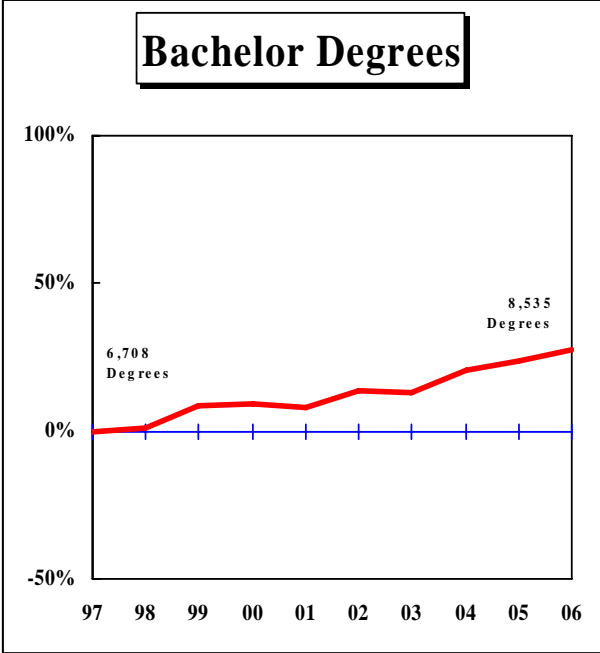


Table 1. Degrees Awarded at the University Of Missouri, July 1, 1996 Through June 30, 2006

DEGREE	FY	FY	FY	FY	FY	FY	FY	FY	FY	FY	Average			Change in FY06 relative to the 10-Year Avg.
	1997	1998	1999	2000	2001	2002	2003	2004	2005	2006	3-Year	5-Year	10-Year	
<b>UNIVERSITY OF MISSOURI - COLUMBIA</b>														
Bachelors	3,177	3,391	3,670	3,840	3,716	3,761	3,848	4,086	4,259	4,461	4,268.7	4,083.0	3,820.9	17%
Graduate Certificate						36	93	69	79	84	77.3	72.2	N/A	
First Professional	278	292	330	314	315	291	325	331	288	292	303.7	305.4	305.6	-4%
Masters	987	848	893	905	1,004	991	1,209	1,222	1,195	1,314	1,243.7	1,186.2	1,056.8	24%
Education Specialist	32	24	32	12	36	33	41	23	33	21	25.7	30.2	28.7	-27%
Doctorate	264	277	230	256	278	252	274	251	274	277	267.3	265.6	263.3	5%
Total, All Degrees	4,738	4,832	5,155	5,327	5,349	5,364	5,790	5,982	6,128	6,449	6,186.3	5,942.6	5,511.4	17%
<b>UNIVERSITY OF MISSOURI - KANSAS CITY</b>														
Bachelors	1,024	1,001	1,138	1,045	1,081	1,221	1,135	1,316	1,393	1,425	1,378.0	1,298.0	1,177.9	21%
Graduate Certificate	5	21	23	18	19	8	22	9	19	23	17.0	16.2	16.7	38%
First Professional	318	300	364	348	344	359	364	390	377	415	394.0	381.0	357.9	16%
Masters	728	738	719	674	712	741	877	795	794	791	793.3	799.6	756.9	5%
Education Specialist	36	47	36	36	52	43	53	59	41	41	47.0	47.4	44.4	-8%
Doctorate	52	54	65	63	76	59	62	65	48	61	58.0	59.0	60.5	1%
Total, All Degrees	2,163	2,161	2,345	2,184	2,284	2,431	2,513	2,634	2,672	2,756	2,687.3	2,601.2	2,414.3	14%
<b>UNIVERSITY OF MISSOURI - ROLLA</b>														
Bachelors	834	743	779	743	685	742	743	756	731	744	743.7	743.2	750.0	-1%
Graduate Certificate						22	20	70	83	75	76.0	54.0	N/A	
Masters	332	338	291	317	366	366	414	502	440	392	444.7	422.8	375.8	4%
Doctorate	59	61	44	46	42	45	51	61	66	74	67.0	59.4	54.9	35%
Total, All Degrees	1,225	1,142	1,114	1,106	1,093	1,175	1,228	1,389	1,320	1,285	1,331.3	1,279.4	1,207.7	6%
<b>UNIVERSITY OF MISSOURI - ST. LOUIS</b>														
Bachelors	1,673	1,663	1,707	1,695	1,777	1,887	1,853	1,932	1,902	1,905	1,913.0	1,895.8	1,799.4	6%
Graduate Certificate	25	20	21	41	56	64	87	54	76	77	69.0	71.6	52.1	48%
First Professional	37	38	43	44	45	42	39	35	46	34	38.3	39.2	40.3	-16%
Masters	646	543	590	507	545	637	622	675	786	730	730.3	690.0	628.1	16%
Education Specialist									3	29	N/A	N/A	N/A	
Doctorate	29	34	30	38	33	45	45	40	51	58	49.7	47.8	40.3	44%
Total, All Degrees	2,410	2,298	2,391	2,325	2,456	2,675	2,646	2,736	2,864	2,833	2,811.0	2,750.8	2,563.4	11%

Table 1. Degrees Awarded at the University Of Missouri, July 1, 1996 Through June 30, 2006 (continued)

DEGREE	FY	FY	FY	FY	FY	FY	FY	FY	FY	FY	<u>Average</u>			Change in FY06 relative to the 10-Year Avg.
	1997	1998	1999	2000	2001	2002	2003	2004	2005	2006	3-Year	5-Year	10-Year	
<b>UNIVERSITY OF MISSOURI SYSTEM</b>														
Bachelors	6,708	6,798	7,294	7,323	7,259	7,611	7,579	8,090	8,285	8,535	7,984.7	7,764.8	7,345.8	13%
Graduate Certificate	30	41	44	59	75	130	222	202	257	259	227.0	177.2	108.1	138%
First Professional	633	630	737	706	704	692	728	756	711	741	731.7	718.2	696.7	2%
Masters	2,693	2,467	2,493	2,403	2,627	2,735	3,122	3,194	3,215	3,227	3,177.0	2,978.6	2,756.6	17%
Education Specialist	68	71	68	48	88	76	94	82	77	91	84.3	83.4	75.7	2%
Doctorate	404	426	369	403	429	401	432	417	439	470	429.3	423.6	409.9	7%
Total, All Degrees	10,536	10,433	11,005	10,942	11,182	11,645	12,177	12,741	12,984	13,323	12,634.0	12,145.8	11,392.8	14%

IR&P/RS 8/06

Table 2.1: Degrees Awarded by Colleges at the University Of Missouri – Columbia

COLLEGE/DEGREE	FY 1997	FY 1998	FY 1999	FY 2000	FY 2001	FY 2002	FY 2003	FY 2004	FY 2005	FY 2006	3-Year	Average 5-Year	10-Year	Change in FY06 relative to the 10-Year Avg.
<b>AGRICULTURE, FOOD, AND NATURAL RESOURCES, COLLEGE OF</b>														
Bachelors	304	356	328	382	369	317	339	335	306	356	332.3	330.6	339.2	5%
Masters	36	31	37	31	42	44	37	43	37	43	41.0	40.8	38.1	13%
Doctorate	29	27	25	26	24	28	32	27	24	31	27.3	28.4	27.3	14%
All	369	414	390	439	435	389	408	405	367	430	400.7	399.8	404.6	6%
<b>ARTS AND SCIENCE, COLLEGE OF</b>														
Bachelors	1,057	1,159	1,251	1,410	1,310	1,405	1,490	1,578	1,549	1,633	1,586.7	1,531.0	1,384.2	18%
Masters	147	131	119	108	110	118	143	130	136	159	141.7	137.2	130.1	22%
Doctorate	96	97	74	88	100	82	92	94	101	100	98.3	93.8	92.4	8%
All	1,300	1,387	1,444	1,606	1,520	1,605	1,725	1,802	1,786	1,892	1,826.7	1,762.0	1,606.7	18%
<b>BUSINESS, COLLEGE OF</b>														
Bachelors	365	398	451	467	497	540	529	632	711	777	706.7	637.8	536.7	45%
Grad. Certif.						36	60	68	56	51	58.3	54.2	N/A	
Masters	92	101	115	163	139	152	153	191	174	197	187.3	173.4	147.7	33%
Doctorate	4	6	5	5	4	10	5	8	8	6	7.3	7.4	6.1	-2%
All	461	505	571	635	640	738	747	899	949	1,031	959.7	872.8	717.6	44%
<b>EDUCATION, COLLEGE OF</b>														
Bachelors	264	258	314	249	228	219	204	219	234	283	245.3	231.8	247.2	14%
Masters	322	245	294	267	267	297	412	412	360	438	403.3	383.8	331.4	32%
Ed. Specialist	32	24	32	12	36	33	41	23	33	21	25.7	30.2	28.7	-27%
Doctorate	68	77	68	76	76	69	70	70	73	62	68.3	68.8	70.9	-13%
All	686	604	708	604	607	618	727	724	700	804	742.7	714.6	678.2	19%
<b>ENGINEERING, COLLEGE OF</b>														
Bachelors	358	346	354	401	354	328	322	359	378	343	360.0	346.0	354.3	-3%
Masters	127	82	88	84	84	79	103	97	87	107	97.0	94.6	93.8	14%
Doctorate	31	31	17	34	15	16	30	16	24	33	24.3	23.8	24.7	34%
All	516	459	459	519	453	423	455	472	489	483	481.3	464.4	472.8	2%

Table 2.1: Degrees Awarded by Colleges at the University Of Missouri – Columbia (continued)

COLLEGE/DEGREE	FY 1997	FY 1998	FY 1999	FY 2000	FY 2001	FY 2002	FY 2003	FY 2004	FY 2005	FY 2006		<u>Average</u>			Change in FY06 relative to the 10-Year Avg.
												3-Year	5-Year	10-Year	
<b>HEALTH PROFESSIONS, SCHOOL OF</b>															
Bachelors	155	137	143	83	129	117	99	96	122	113		110.3	109.4	119.4	-5%
Masters	11	7	9	8	60	60	50	39	62	67		56.0	55.6	37.3	80%
Doctorate					1	1	0	0	0	0		0.0	0.2	N/A	
All	166	144	152	91	190	178	149	135	184	180		166.3	165.2	156.9	15%
<b>HUMAN ENVIRONMENTAL SCIENCES, COLLEGE OF</b>															
Bachelors	189	190	228	262	284	237	228	233	262	250		248.3	242.0	236.3	6%
Grad. Certif.										1		N/A	N/A	N/A	
Masters	21	20	17	19	16	28	16	15	35	24		24.7	23.6	21.1	14%
Doctorate	6	6	6	4	11	6	11	6	3	4		4.3	6.0	6.3	-37%
All	216	216	251	285	311	271	255	254	300	279		277.7	271.8	263.8	6%
<b>JOURNALISM, SCHOOL OF</b>															
Bachelors	227	284	300	292	287	320	337	364	404	412		393.3	367.4	322.7	28%
Masters	57	61	54	55	62	61	75	64	94	70		76.0	72.8	65.3	7%
Doctorate	6	10	5	4	6	8	8	8	10	14		10.7	9.6	7.9	77%
All	290	355	359	351	355	389	420	436	508	496		480.0	449.8	395.9	25%
<b>LAW, SCHOOL OF</b>															
Grad. Certif.						0	33	0	1	18		6.3	10.4	N/A	
First Profes.	121	131	185	166	157	139	172	175	138	139		150.7	152.6	152.3	-9%
Masters			0	6	4	13	7	12	10	7		9.7	9.8	N/A	
All	121	131	185	172	161	152	212	187	149	164		166.7	172.8	163.4	0%
<b>MEDICINE, SCHOOL OF</b>															
First Profes.	91	97	87	87	96	92	90	92	89	89		90.0	90.4	91.0	-2%
Masters	37	37	22	39	34	27	29	22	27	29		26.0	26.8	30.3	-4%
Doctorate	10	6	10	9	20	6	10	5	7	5		5.7	6.6	8.8	-43%
All	138	140	119	135	150	125	129	119	123	123		121.7	123.8	130.1	-5%
<b>NATURAL RESOURCES, SCHOOL OF</b>															
Bachelors	116	126	145	118	83	106	122	104	109	99		104.0	108.0	112.8	-12%
Masters	28	20	22	20	16	14	16	17	27	21		21.7	19.0	20.1	4%
Doctorate	7	5	2	3	7	6	2	6	9	7		7.3	6.0	5.4	30%
All	151	151	169	141	106	126	140	127	145	127		133.0	133.0	138.3	-8%

Table 2.1: Degrees Awarded by Colleges at the University Of Missouri – Columbia (continued)

COLLEGE/DEGREE	FY 1997	FY 1998	FY 1999	FY 2000	FY 2001	FY 2002	FY 2003	FY 2004	FY 2005	FY 2006		<u>Average</u>			Change in FY06 relative to the 10-Year Avg.
												3-Year	5-Year	10-Year	
<b>NURSING, SCHOOL OF</b>															
Bachelors	121	115	134	154	145	145	143	134	156	166		152.0	148.8	141.3	17%
Masters	43	42	43	27	34	25	27	26	36	28		30.0	28.4	33.1	-15%
Doctorate	2	3	5	2	1	9	4	3	2	4		3.0	4.4	3.5	
All	166	160	182	183	180	179	174	163	194	198		185.0	181.6	177.9	11%
<b>SOCIAL WORK, SCHOOL OF</b>															
Bachelors	21	22	22	22	30	27	35	32	28	29		29.7	30.2	26.8	8%
Masters	54	64	56	65	98	56	108	103	48	65		72.0	76.0	71.7	-9%
Doctorate	0	0	0	0	0	0	0	0	1	0		0.3	0.2	N/A	
All	75	86	78	87	128	83	143	135	77	94		102.0	106.4	98.6	-5%
<b>VETERINARY MEDICINE, COLLEGE OF</b>															
First Profes.	66	64	58	61	62	60	63	64	61	64		63.0	62.4	62.3	3%
Masters	6	4	13	3	4	3	7	9	7	4		6.7	6.0	6.0	-33%
Doctorate	2	6	4	2	2	1	1	0	2	1		1.0	1.0	2.1	-52%
All	74	74	75	66	68	64	71	73	70	69		70.7	69.4	70.4	-2%
<b>GRADUATE SCHOOL</b>															
Grad. Certif.	0	0	0	0	0	0	0	1	22	14		12.3	7.4	N/A	
Masters	6	3	4	10	34	14	26	42	55	55		50.7	38.4	24.9	121%
Doctorate	3	3	9	3	11	10	9	8	10	10		9.3	9.4	7.6	32%
All	9	6	13	13	45	24	35	51	87	79		72.3	55.2	36.2	118%

IR&P/RS 8/06



Table 2.2: Degrees Awarded by Colleges at the University Of Missouri - Kansas City

COLLEGE/DEGREE	FY 1997	FY 1998	FY 1999	FY 2000	FY 2001	FY 2002	FY 2003	FY 2004	FY 2005	FY 2006	3-Year	Average 5-Year	10-Year	Change in FY06 relative to the 10-Year Avg.
<b>ARTS AND SCIENCES, COLLEGE OF</b>														
Bachelors	584	564	676	663	660	703	684	755	795	805	785.0	748.4	688.9	17%
Masters	128	164	141	138	147	135	152	145	150	189	161.3	154.2	148.9	27%
Doctorate	5	3	0	0	1	1	3	1	0	4	1.7	1.8	1.8	122%
All	717	731	817	801	808	839	839	901	945	998	948.0	904.4	839.6	19%
<b>BIOLOGICAL SCIENCES, SCHOOL OF</b>														
Bachelors	125	142	149	81	74	60	56	49	57	64	56.7	57.2	85.7	-25%
Masters	13	11	12	9	13	17	14	13	21	16	16.7	16.2	13.9	15%
Doctorate	2	3	0	0	0						N/A	N/A	N/A	
All	140	156	161	90	87	77	70	62	78	80	73.3	73.4	100.1	-20%
<b>BUSINESS AND PUBLIC ADMINISTRATION, SCHOOL OF</b>														
Bachelors	141	123	146	139	148	162	123	147	180	189	172.0	160.2	149.8	26%
Masters	228	237	253	207	252	219	232	222	213	181	205.3	213.4	224.4	-19%
All	369	360	399	346	400	381	355	369	393	370	377.3	373.6	374.2	-1%
<b>COMPUTING AND ENGINEERING, SCHOOL OF</b>														
Bachelors				13	7	127	96	146	109	93	116.0	114.2	N/A	
Masters						51	59	74	85	75	78.0	68.8	N/A	
All				13	7	178	155	220	194	168	194.0	183.0	N/A	
<b>DENTISTRY, SCHOOL OF</b>														
Bachelors	25	25	22	29	29	30	30	28	24	28	26.7	28.0	27.0	4%
Grad. Certif.	5	21	23	18	19	8	21	9	17	23	16.3	15.6	16.4	40%
First Profes.	74	67	78	76	65	83	83	78	79	92	83.0	83.0	77.5	19%
Masters	2	12	4	7	4	4	2	6	2	0	2.7	2.8	4.3	-100%
All	106	125	127	130	117	125	136	121	122	143	128.7	129.4	125.2	14%
<b>EDUCATION, SCHOOL OF</b>														
Bachelors	83	70	85	67	91	89	83	119	107	107	111.0	101.0	90.1	19%
Masters	197	179	179	197	191	188	280	223	200	196	206.3	217.4	203.0	-3%
Ed. Specialist	36	47	36	36	52	43	53	59	41	41	47.0	47.4	44.4	-8%
Doctorate	14	12	7	6	12	8	9	13	7	4	8.0	8.2	9.2	-57%
All	330	308	307	306	346	328	425	414	355	348	372.3	374.0	346.7	0%

Table 2.2: Degrees Awarded by Colleges at the University Of Missouri - Kansas City (continued)

COLLEGE/DEGREE	FY 1997	FY 1998	FY 1999	FY 2000	FY 2001	FY 2002	FY 2003	FY 2004	FY 2005	FY 2006		3-Year	<u>Average</u> 5-Year	10-Year	Change in FY06 relative to the 10-Year Avg.
<b>GRADUATE STUDIES, SCHOOL OF</b>															
Doctorate	19	23	35	38	42	38	36	33	29	43		35.0	35.8	33.6	28%
<b>LAW, SCHOOL OF</b>															
First Profes.	146	131	166	131	146	116	132	159	153	156		156.0	143.2	143.6	9%
Masters	26	25	20	19	9	18	29	22	15	21		19.3	21.0	20.4	3%
All	172	156	186	150	155	134	161	181	168	177		175.3	164.2	164.0	8%
<b>MEDICINE, SCHOOL OF</b>															
First Profes.	82	74	87	86	76	97	81	93	83	90		88.7	88.8	84.9	6%
<b>MUSIC, CONSERVATORY OF</b>															
Bachelors	32	34	32	34	52	33	49	52	55	57		54.7	49.2	43.0	33%
Grad. Certif.							1	0	2	0		0.7	N/A	N/A	
Masters	47	33	41	26	40	36	30	29	49	41		39.7	37.0	37.2	10%
Doctorate	12	11	19	18	20	9	12	17	9	9		11.7	11.2	13.6	-34%
All	91	78	92	78	112	78	92	98	115	107		106.7	98.0	94.1	14%
<b>NURSING, SCHOOL OF</b>															
Bachelors	7	13	23	19	20	17	14	14	61	76		50.3	36.4	26.4	188%
Masters	86	77	68	66	55	67	69	58	58	69		61.7	64.2	67.3	3%
Doctorate	0	1	2	0	1	3	2	1	3	1		1.7	2.0	1.4	-29%
All	93	91	93	85	76	87	85	73	122	146		113.7	102.6	95.1	54%
<b>PHARMACY, SCHOOL OF</b>															
Bachelors	27	30	5	0	0	0	0	6	5	6		5.7	3.4	7.9	-24%
First Profes.	16	28	33	55	57	63	68	60	62	77		66.3	66.0	51.9	48%
Masters	1	0	1	5	1	6	10	3	1	3		2.3	4.6	3.1	-3%
Doctorate	0	1	2	1	0							N/A	N/A	N/A	
All	44	59	41	61	58	69	78	69	68	86		74.3	74.0	63.3	36%

Table 2.3: Degrees Awarded by Colleges at the University Of Missouri – Rolla

COLLEGE/DEGREE	FY 1997	FY 1998	FY 1999	FY 2000	FY 2001	FY 2002	FY 2003	FY 2004	FY 2005	FY 2006	3-Year	Average 5-Year	10-Year	Change in FY06 relative to the 10-Year Avg.
<b>ARTS AND SCIENCES, COLLEGE OF</b>														
Bachelors	154	149	178	164	172	153	149	160	162	155	159.0	155.8	159.6	-3%
Grad. Certif.									1	0	0.3	N/A	N/A	0%
Masters	49	51	41	58	45	37	37	50	59	54	54.3	47.4	48.1	12%
Doctorate	17	20	12	18	10	16	9	17	11	20	16.0	14.6	15.0	33%
All	220	220	231	240	227	206	195	227	233	229	229.7	218.0	222.8	3%
<b>ENGINEERING, SCHOOL OF</b>														
Bachelors	530	466	467	435	407	455	432	464	445	439	449.3	447.0	454.0	-3%
Grad. Certif.						22	20	70	82	69	73.7	52.6	N/A	0%
Masters	262	264	229	224	278	286	327	381	310	278	323.0	316.4	283.9	-2%
Doctorate	30	30	23	15	23	23	31	31	41	36	36.0	32.4	28.3	27%
All	822	760	719	674	708	786	810	946	878	822	882.0	848.4	792.5	4%
<b>MANAGEMENT AND INFORMATION SYSTEMS, SCHOOL OF</b>														
Bachelors						20	52	47	64	69	60.0	50.4	N/A	
Grad. Certif.									0	6	N/A	N/A	N/A	
Masters						0	3	6	15	20	13.7	8.8	N/A	
All						20	55	53	79	95	75.7	60.4	N/A	
<b>MATERIALS, ENERGY, AND EARTH RESOURCES, SCHOOL OF</b>														
Bachelors	150	128	134	144	106	114	110	85	60	81	75.3	90.0	111.2	-27%
Masters	21	23	21	35	43	43	47	65	56	40	53.7	50.2	39.4	2%
Doctorate	12	11	9	13	9	6	11	13	14	18	15.0	12.4	11.6	55%
All	183	162	164	192	158	163	168	163	130	139	144.0	152.6	162.2	-14%

Table 2.4: Degrees Awarded by Colleges at the University Of Missouri - St. Louis

COLLEGE/DEGREE	FY 1997	FY 1998	FY 1999	FY 2000	FY 2001	FY 2002	FY 2003	FY 2004	FY 2005	FY 2006		3-Year	Average 5-Year	10-Year	Change in FY06 relative to the 10-Year Avg.	
<b>ARTS AND SCIENCES, COLLEGE OF</b>																
Bachelors	666	671	711	722	747	724	632	644	640	674		652.7	662.8	683.1	-1%	
Grad. Certif.	12	12	11	10	14	14	19	18	25	26		23.0	20.4	16.1	61%	
Masters	92	123	102	100	139	177	187	188	208	201		199.0	192.2	151.7	32%	
Doctorate	22	25	22	28	21	26	20	23	27	30		26.7	25.2	24.4	23%	
All	792	831	846	860	921	941	858	873	900	931		901.3	900.6	875.3	6%	
<b>BUSINESS ADMINISTRATION, COLLEGE OF</b>																
Bachelors	418	403	450	470	499	547	566	612	532	542		562.0	559.8	503.9	8%	
Grad. Certif.	4	2	3	17	23	30	46	17	21	16		18.0	26.0	17.9	-11%	
Masters	88	68	92	91	100	127	135	117	145	133		131.7	131.4	109.6	21%	
All	510	473	545	578	622	704	747	746	698	691		711.7	717.2	631.4	9%	
<b>EDUCATION, COLLEGE OF</b>																
Bachelors	347	336	309	289	322	306	271	289	276	247		270.7	277.8	299.2	-17%	
Grad. Certif.								5	6	11		7.3	N/A	N/A		
Masters	350	298	289	236	245	227	239	267	333	302		300.7	273.6	278.6	8%	
Ed. Specialist									3	29		N/A	N/A	N/A		
Doctorate	7	9	6	6	8	13	20	15	21	24		20.0	18.6	12.9	86%	
All	704	643	604	531	575	546	530	576	639	613		609.3	580.8	596.1	3%	
<b>FINE ARTS AND COMMUNICATION, COLLEGE OF</b>																
Bachelors							102	205	174	219	219		204.0	183.8	N/A	
Masters									1	7	16		8.0	N/A	N/A	
All							102	205	175	226	235		212.0	188.6	N/A	
<b>NURSING, COLLEGE OF</b>																
Bachelors	148	144	143	117	94	110	115	123	152	160		145.0	132.0	130.6	23%	
Masters	106	46	94	66	30	88	34	64	60	46		56.7	58.4	63.4	-27%	
Doctorate	0	0	2	4	4	5	4	1	1	4		2.0	3.0	2.5	60%	
All	254	190	239	187	128	203	153	188	213	210		203.7	193.4	196.5	7%	

Table 2.4: Degrees Awarded by Colleges at the University Of Missouri - St. Louis (continued)

COLLEGE/DEGREE	FY 1997	FY 1998	FY 1999	FY 2000	FY 2001	FY 2002	FY 2003	FY 2004	FY 2005	FY 2006	3-Year	<u>Average</u> 5-Year	10-Year	Change in FY06 relative to the 10-Year Avg.
<b>OPTOMETRY, COLLEGE OF</b>														
First Profes.	37	38	43	44	45	42	39	35	46	34	38.3	39.2	40.3	-16%
Masters	1	0	0	0	0	0	2	1	0	0	0.3	0.6	0.4	-100%
Doctorate	0	0	0	0	0	1	1	1	2	0	1.0	1.0	0.5	-100%
All	38	38	43	44	45	43	42	37	48	34	39.7	40.8	41.2	-17%
<b>ENGINEERING PROGRAM</b>														
Bachelors	6	14	17	17	33	29	26	42	42	33	39.0	34.4	25.9	27%
<b>EVENING COLLEGE</b>														
Bachelors	88	95	77	80	82	69	38	48	41		N/A	N/A	N/A	
<b>GRADUATE SCHOOL</b>														
Bachelors										30	N/A	N/A	N/A	
Grad. Certif.	9	6	7	14	19	20	22	14	24	24	20.7	20.8	15.9	51%
Masters	9	8	13	14	31	18	25	37	33	32	34.0	29.0	22.0	45%
All	18	14	20	28	50	38	47	51	57	86	64.7	55.8	40.9	110%

IR&P/RS 8/06