

**The 2006-2007 Report of Degrees Awarded
by the University of Missouri**

Randy Sade
Assistant Research Analyst

Office of Institutional Research and Planning
University of Missouri System

September 2007

IR&P 2007, Report 5

<http://www.umsystem.edu/ums/departments/fa/planning/>

The 2006-2007 Report of Degrees Awarded by the University of Missouri

Executive Summary

This report includes graphs and tables of degrees awarded by each campus since 1998. The first table provides a summary of degrees by level for each campus, while the second table series gives the number of awards by the colleges of each campus. The *Department Detail Summary* reflects the number of degrees awarded by academic department. These tables also show the average number of degrees over a 3, 5, & 10-year period and the percent change in FY 2007 that is relative to the 10-year average.

The highlights of the report include:

- The University of Missouri System awarded a record 13,880 degrees, a 15% growth in FY 2007 relative to the 10-year average. (Table 1)
- Relative to the 10-year average, the number of FY 2007 bachelors degrees for the University of Missouri System increased 16%, and graduate certificates increased 85%.
- Comparing FY 2007 degrees to the 10-year averages, the most notable increases are: bachelors degrees awarded are up 19% at UM-Columbia and 17% at UM-Kansas City; masters degrees are up 24% at UM-Columbia and 13% at UM-St. Louis; and doctorates are up 22% at UM-St. Louis, 14% at UM-Kansas City, and 14% at UM-Rolla.
- First Professional degrees at UM-Kansas City increased 18% when comparing FY 2007 to the 10-year average.

Notes Regarding Use of the Report:

- The official annual reporting period is from July 1 to June 30 of the following calendar year. For example, FY07 includes summer and fall graduates from 2006 and the spring graduates of 2007.
- Please note the axis scale range when considering graphs. It may change from campus to campus.
- Previous year's tables may differ because tables in the report have been changed from the use of running averages to 3, 5, and 10 year averages.
- This report includes a 10-year average as related to FY 2007.
- Source for this report is the printed Completions Report.

Technical Notes for Use with the Report:

Footnotes

- Footnotes are of the utmost importance in reading tables in the appendix.

Name Changes

- If a program name changes, the report history is changed to reflect the new name and is footnoted.
- If a degree name or description is changed, the report history is changed to the new description and is footnoted.
- If a department name changes, the report history is changed to the new description and NO footnotes are made.
- If a school or college changes, the report history is changed to the new description and NO footnotes are made.

Program Moves

- If a program moves to another department or school, the data are reported as is – that is, report history is not changed and the new data are reported in the new department. A new footnote is added, i.e., program is moving. Eventually – when there are no more degrees for the old department, the old department is hidden in the report.
- If a program moves to another school or college, the data are reported as is – that is, report history is not changed and the new data are reported in the new school or college. A footnote is added, i.e., program is moving. Eventually – when there are no more degrees for the old department, the old department is hidden in the report.

Figure 1: Rate of Change in Total Degrees Awarded by Campus, since 1998

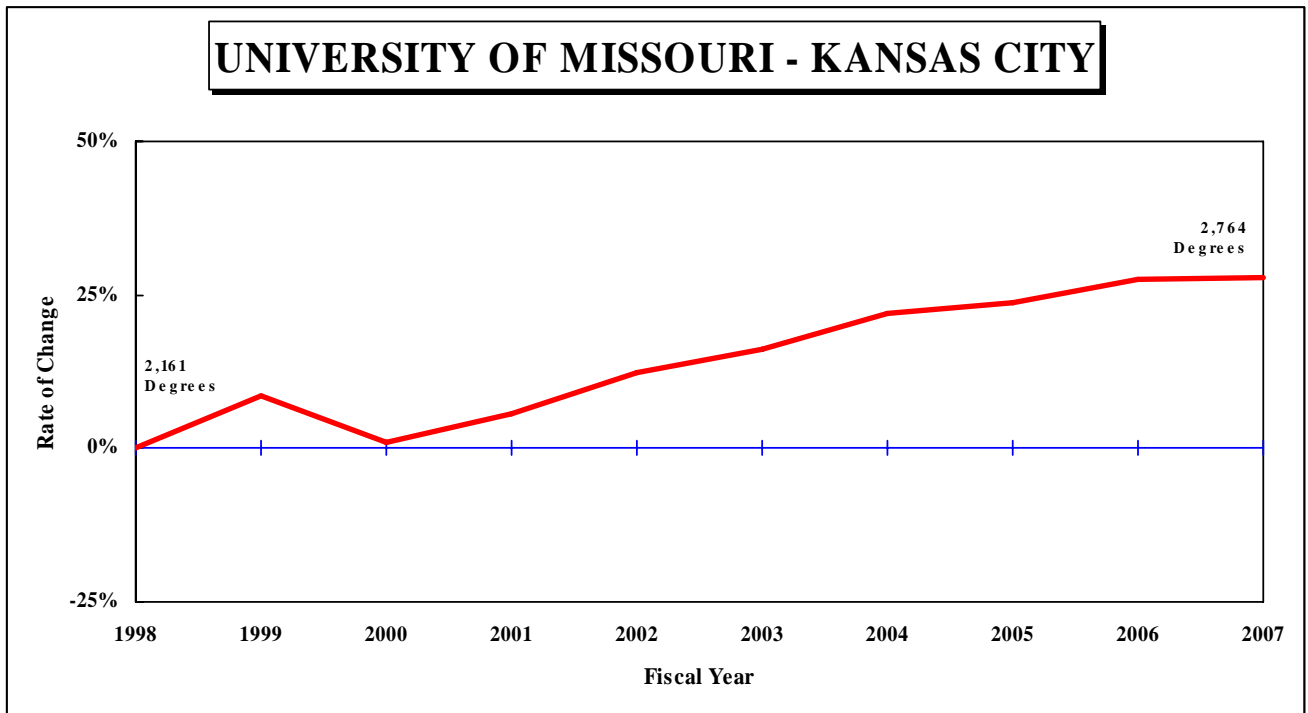
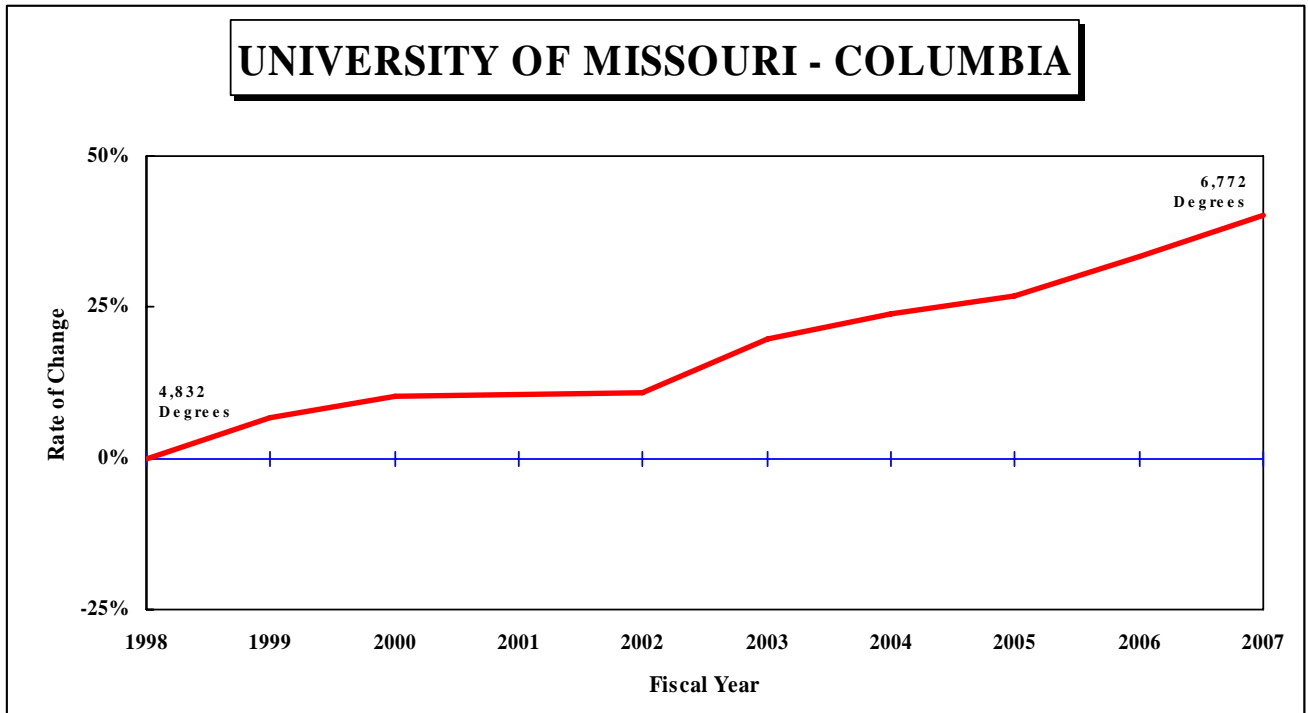


Figure 1: Rate of Change in Total Degrees Awarded by Campus, since 1998
- Continued

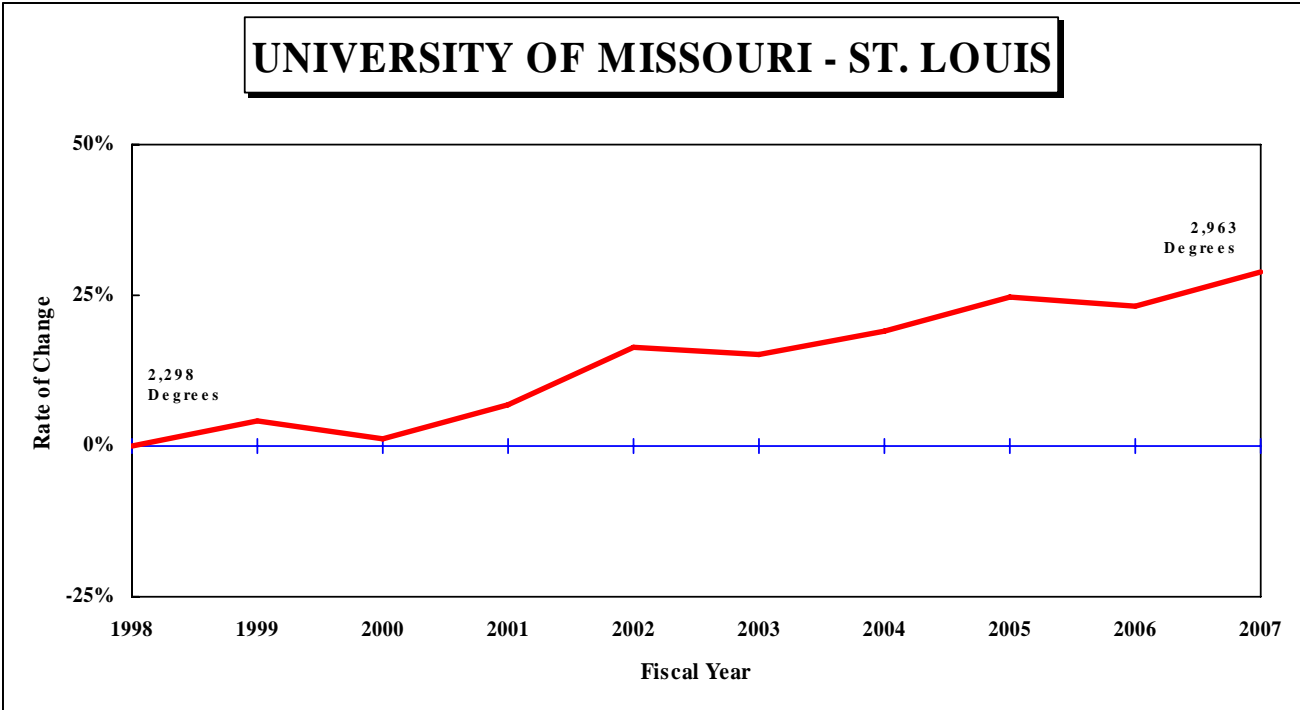
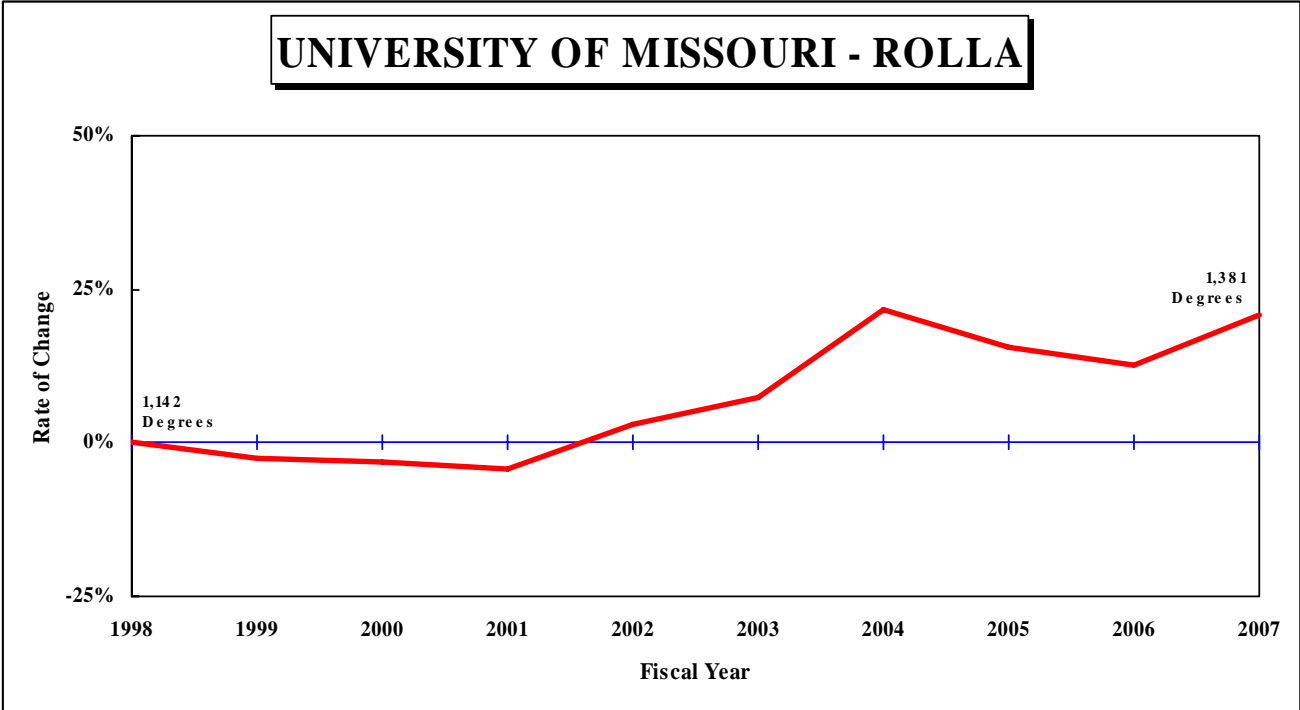


Figure 1: Rate of Change in Total Degrees Awarded by Campus, since 1998
- Continued

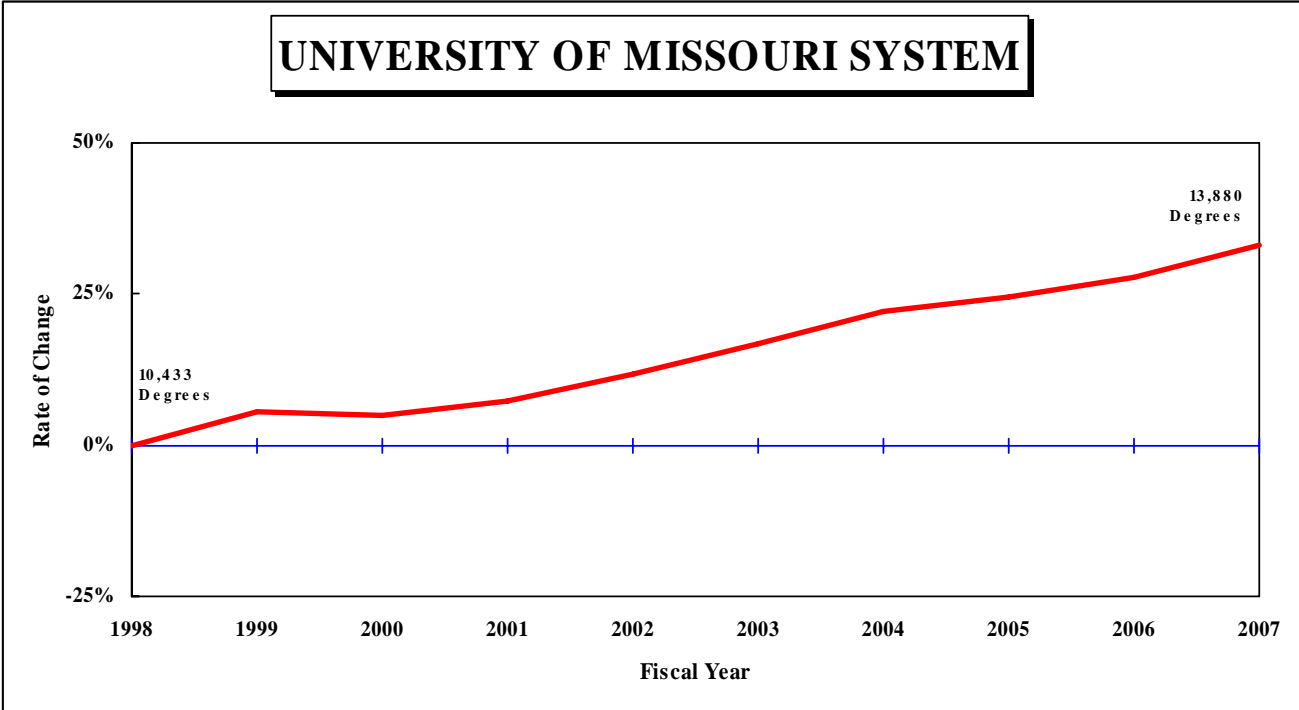


Figure 2: Rate of Change in Total Degrees Awarded by Campus, since 1998

UNIVERSITY OF MISSOURI - COLUMBIA

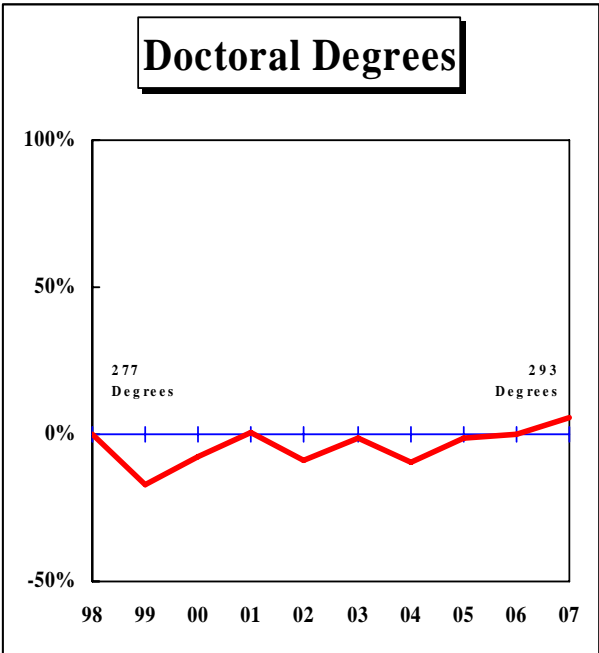
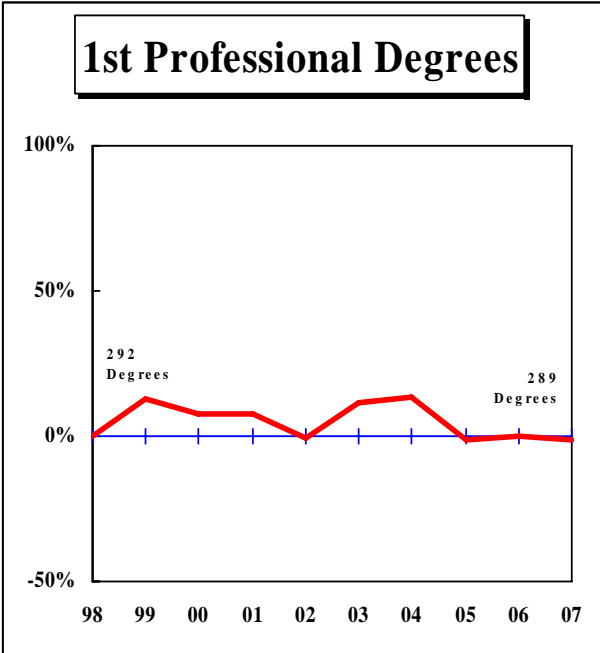
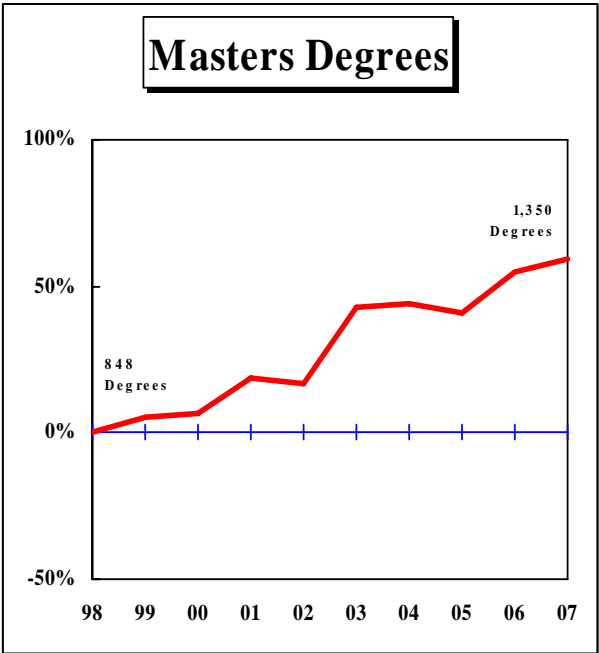
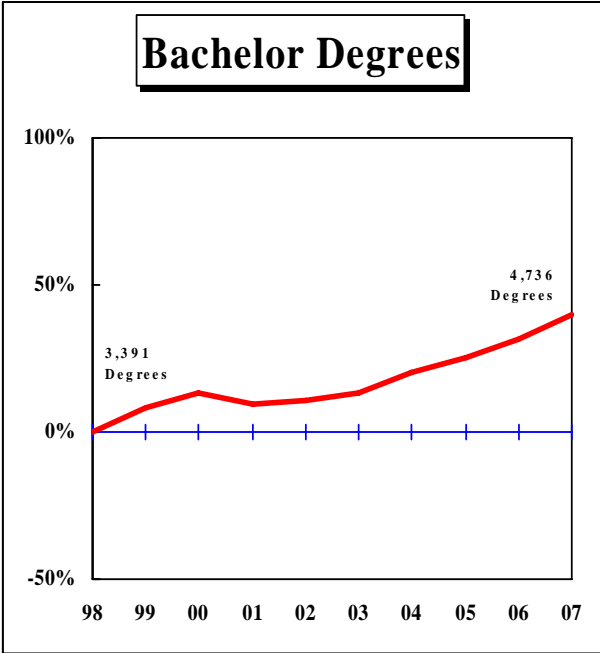


Figure 2: Rate of Change in Total Degrees Awarded by Campus, since 1998
 - Continued

UNIVERSITY OF MISSOURI - KANSAS CITY

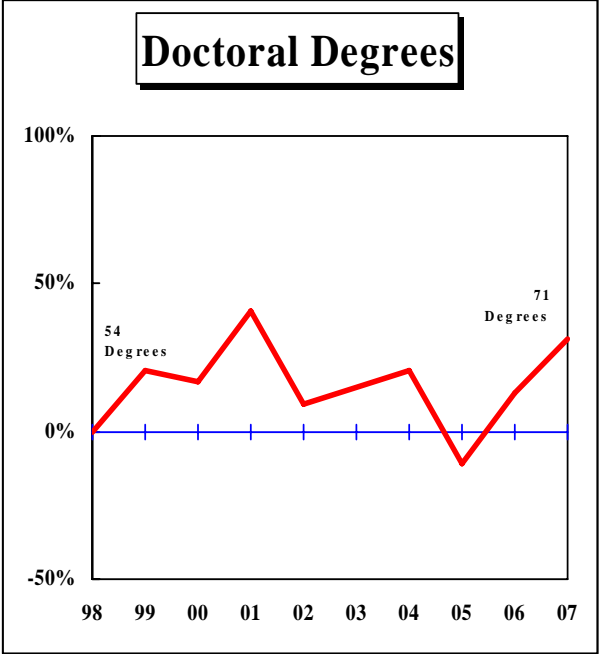
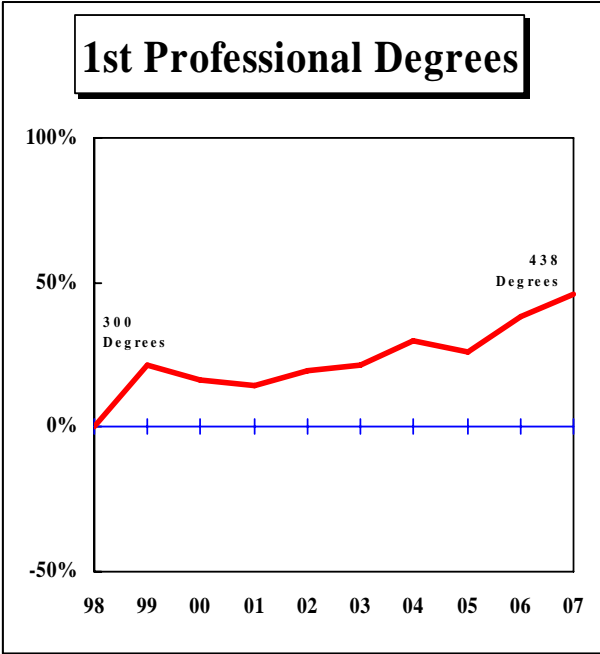
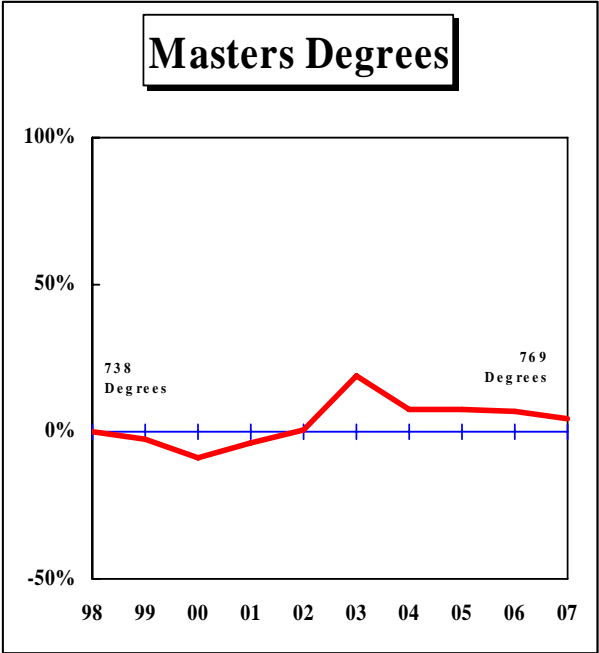
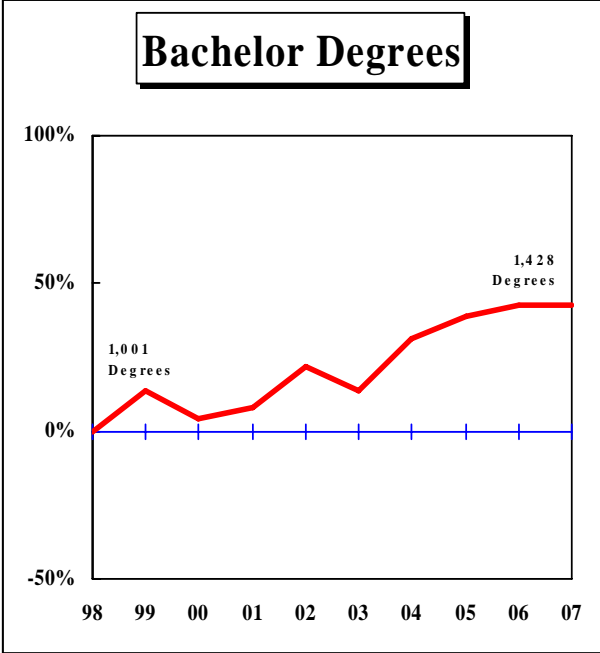


Figure 2: Rate of Change in Total Degrees Awarded by Campus, since 1998
 - Continued

UNIVERSITY OF MISSOURI - ROLLA

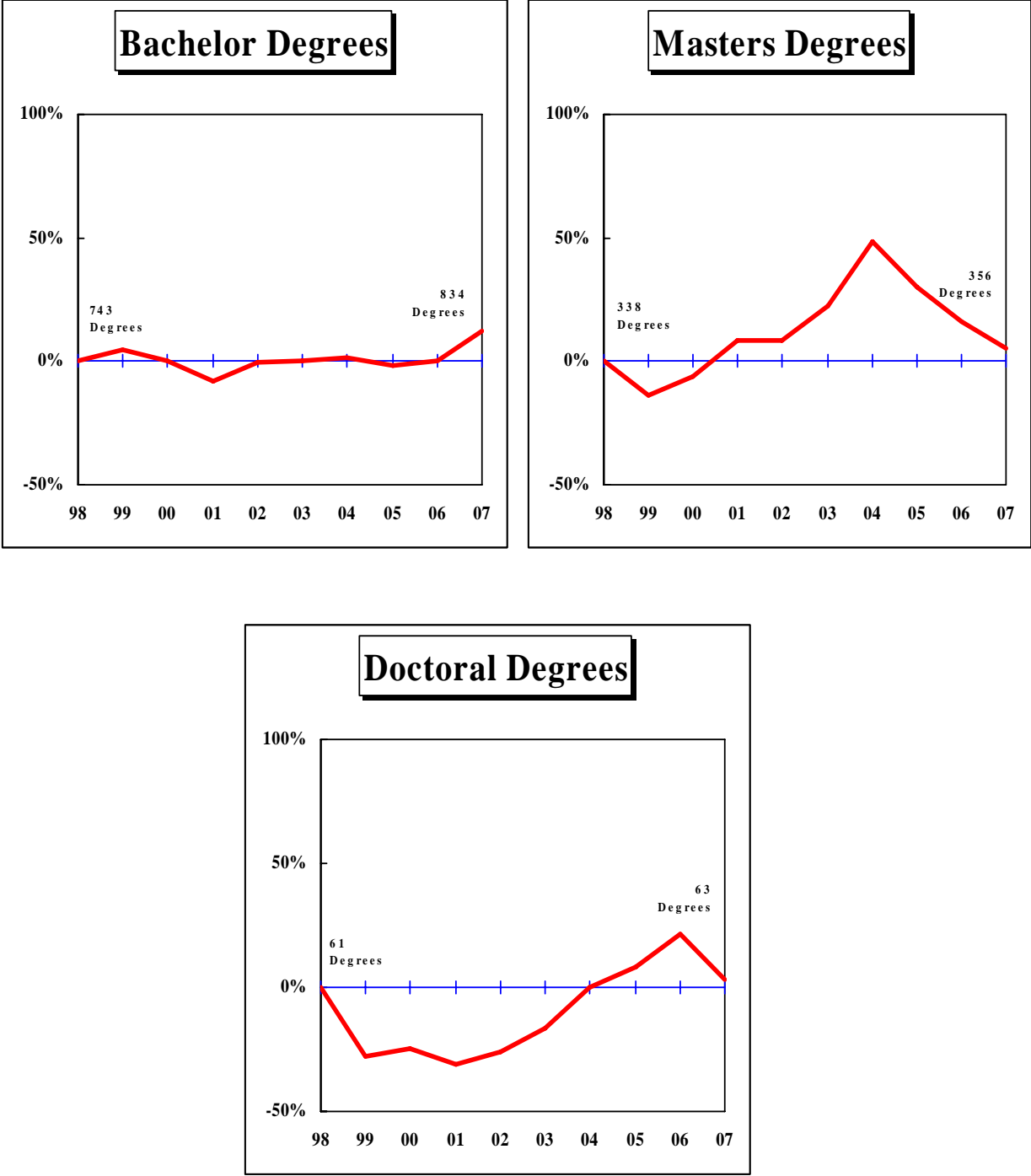


Figure 2: Rate of Change in Total Degrees Awarded by Campus, since 1998
 - Continued

UNIVERSITY OF MISSOURI – ST. LOUIS

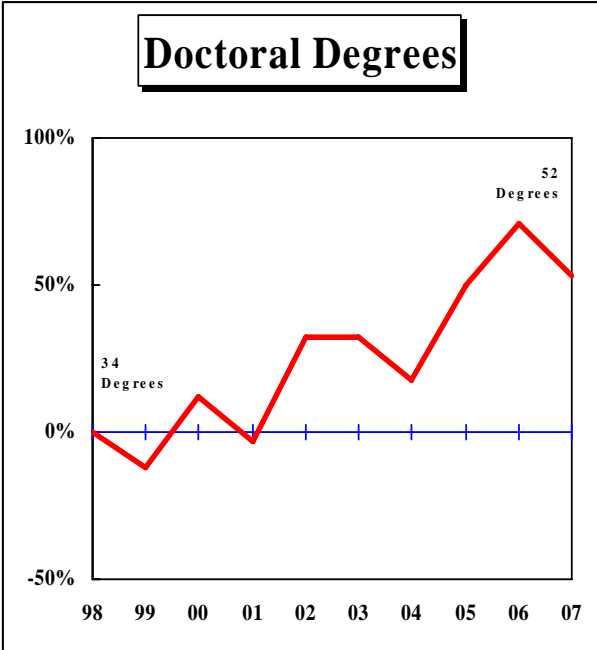
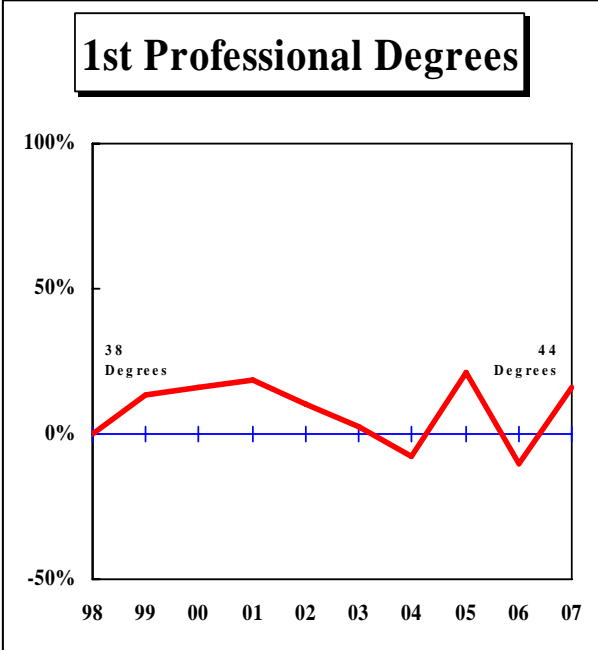
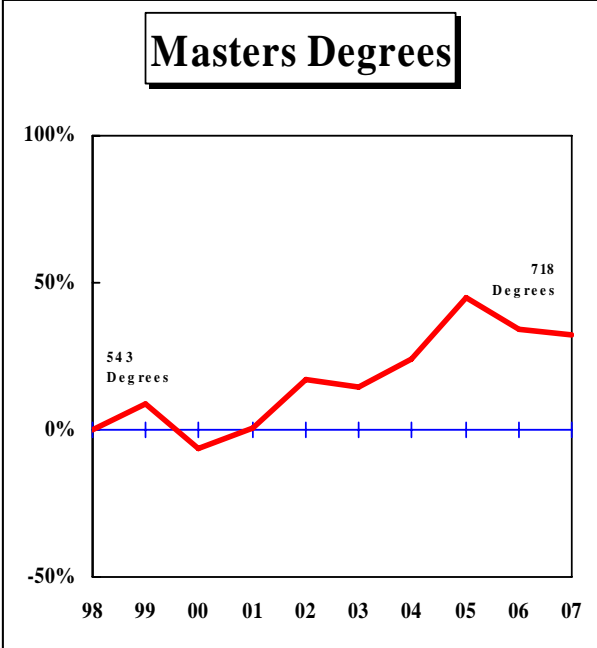
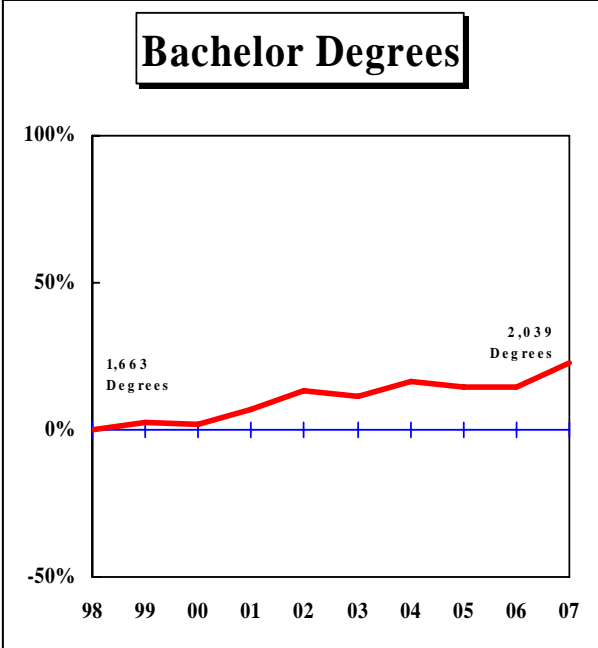


Figure 2: Rate of Change in Total Degrees Awarded by Campus, since 1998
 - Continued

UNIVERSITY OF MISSOURI SYSTEM

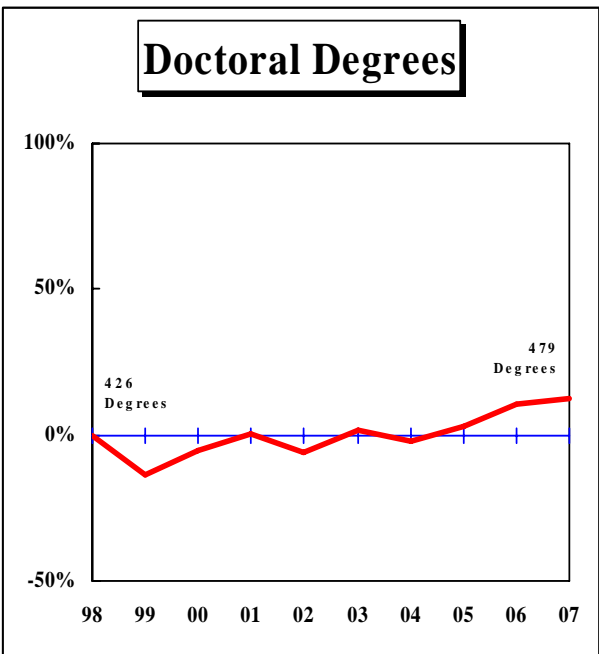
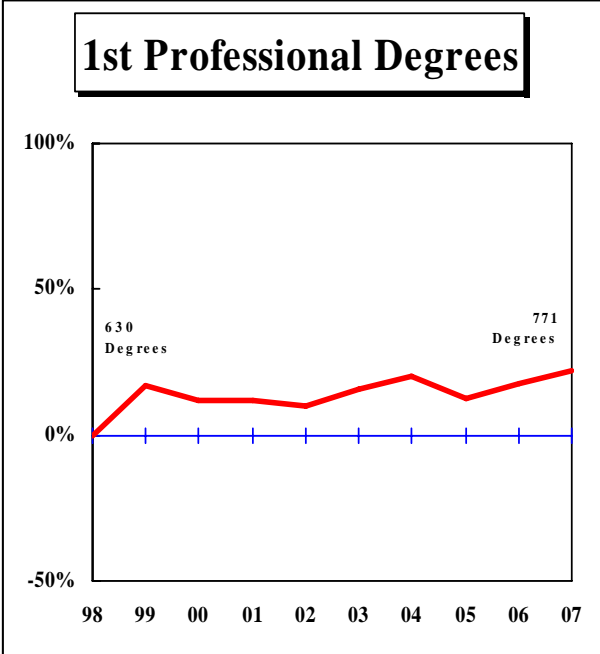
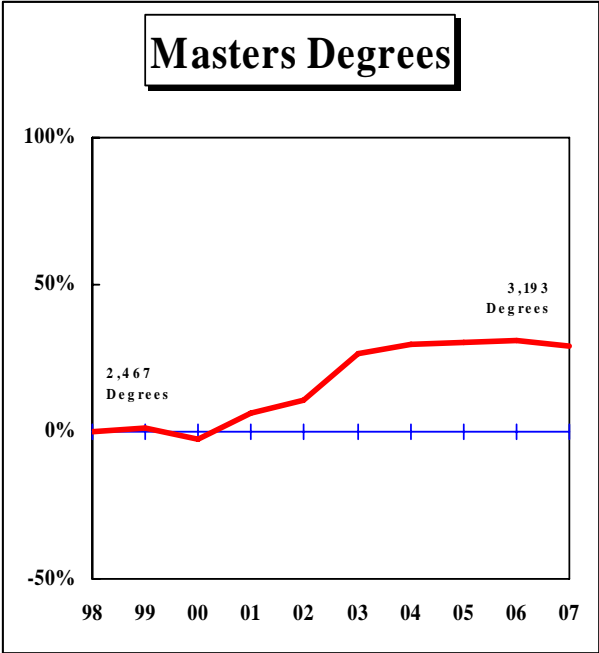
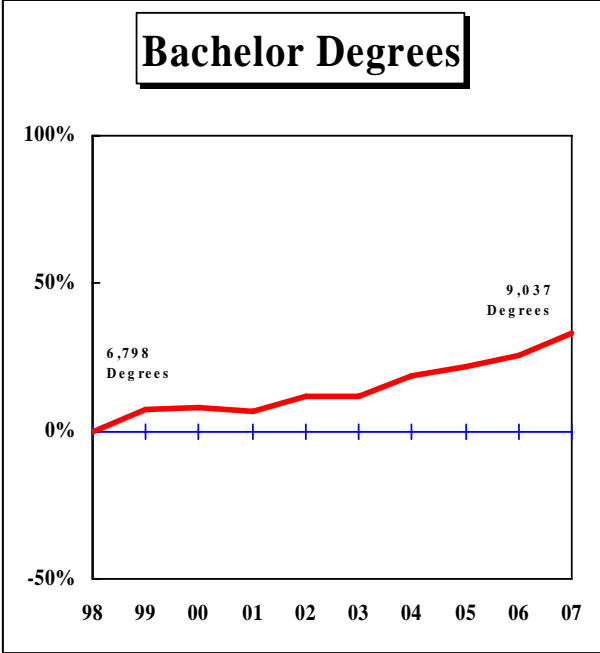


Table 1. Degrees Awarded at the University Of Missouri, July 1, 1997 Through June 30, 2007

DEGREE	FY	FY	FY	FY	FY	FY	FY	FY	FY	FY	<u>Average</u>			Change in FY07 relative to the 10-Year Avg.
	1998	1999	2000	2001	2002	2003	2004	2005	2006	2007	3-Year	5-Year	10-Year	
UNIVERSITY OF MISSOURI - COLUMBIA														
Bachelors	3,391	3,670	3,840	3,716	3,761	3,848	4,086	4,259	4,461	4,736	4,485.3	4,278.0	3,976.8	19%
Graduate Certificate					36	93	69	79	84	68	77.0	78.6	N/A	
First Professional	292	330	314	315	291	325	331	288	292	289	289.7	305.0	306.7	-6%
Masters	848	893	905	1,004	991	1,209	1,222	1,195	1,314	1,350	1,286.3	1,258.0	1,093.1	24%
Education Specialist	24	32	12	36	33	41	23	33	21	36	30.0	30.8	29.1	24%
Doctorate	277	230	256	278	252	274	251	274	277	293	281.3	273.8	266.2	10%
Total, All Degrees	4,832	5,155	5,327	5,349	5,364	5,790	5,982	6,128	6,449	6,772	6,449.7	6,224.2	5,714.8	18%
UNIVERSITY OF MISSOURI - KANSAS CITY														
Bachelors	1,001	1,138	1,045	1,081	1,221	1,135	1,316	1,393	1,425	1,428	1,415.3	1,339.4	1,218.3	17%
Graduate Certificate	21	23	18	19	8	22	9	19	23	19	20.3	18.4	18.1	5%
First Professional	300	364	348	344	359	364	390	377	415	438	410.0	396.8	369.9	18%
Masters	738	719	674	712	741	877	795	794	791	769	784.7	805.2	761.0	1%
Education Specialist	47	36	36	52	43	53	59	41	41	39	40.3	46.6	44.7	-13%
Doctorate	54	65	63	76	59	62	65	48	61	71	60.0	61.4	62.4	14%
Total, All Degrees	2,161	2,345	2,184	2,284	2,431	2,513	2,634	2,672	2,756	2,764	2,730.7	2,667.8	2,474.4	12%
UNIVERSITY OF MISSOURI - ROLLA														
Undergrad. Certificate										1	N/A	N/A	N/A	
Bachelors	743	779	743	685	742	743	756	731	744	834	769.7	761.6	750.0	11%
Graduate Certificate					22	20	70	83	75	127	95.0	75.0	N/A	
Masters	338	291	317	366	366	414	502	440	392	356	396.0	420.8	378.2	-6%
Doctorate	61	44	46	42	45	51	61	66	74	63	67.7	63.0	55.3	14%
Total, All Degrees	1,142	1,114	1,106	1,093	1,175	1,228	1,389	1,320	1,285	1,381	1,328.7	1,320.6	1,223.3	13%
UNIVERSITY OF MISSOURI - ST. LOUIS														
Bachelors	1,663	1,707	1,695	1,777	1,887	1,853	1,932	1,902	1,905	2,039	1,948.7	1,926.2	1,836.0	11%
Graduate Certificate	20	21	41	56	64	87	54	76	77	79	77.3	74.6	57.5	37%
First Professional	38	43	44	45	42	39	35	46	34	44	41.3	39.6	41.0	7%
Masters	543	590	507	545	637	622	675	786	730	718	744.7	706.2	635.3	13%
Education Specialist								3	29	31	21.0	N/A	N/A	
Doctorate	34	30	38	33	45	45	40	51	58	52	53.7	49.2	42.6	22%
Total, All Degrees	2,298	2,391	2,325	2,456	2,675	2,646	2,736	2,864	2,833	2,963	2,886.7	2,808.4	2,618.7	13%

Table 1. Degrees Awarded at the University Of Missouri, July 1, 1997 Through June 30, 2007 (continued)

DEGREE	FY	FY	FY	FY	FY	FY	FY	FY	FY	FY	<u>Average</u>			Change in FY07 relative to the 10-Year Avg.
	1998	1999	2000	2001	2002	2003	2004	2005	2006	2007	3-Year	5-Year	10-Year	
UNIVERSITY OF MISSOURI SYSTEM														
Undergrad. Certificate										1	N/A	N/A	N/A	
Bachelors	6,798	7,294	7,323	7,259	7,611	7,579	8,090	8,285	8,535	9,037	8,619.0	8,305.2	7,781.1	16%
Graduate Certificate	41	44	59	75	130	222	202	257	259	293	269.7	246.6	158.2	85%
First Professional	630	737	706	704	692	728	756	711	741	771	741.0	741.4	717.6	7%
Masters	2,467	2,493	2,403	2,627	2,735	3,122	3,194	3,215	3,227	3,193	3,211.7	3,190.2	2,867.6	11%
Education Specialist	71	68	48	88	76	94	82	77	91	106	91.3	90.0	80.1	32%
Doctorate	426	369	403	429	401	432	417	439	470	479	462.7	447.4	426.5	12%
Total, All Degrees	10,433	11,005	10,942	11,182	11,645	12,177	12,741	12,984	13,323	13,880	13,395.7	13,021.0	12,031.2	15%

IR&P/RS 8/07

Table 2.1: Degrees Awarded by Colleges at the University Of Missouri – Columbia

COLLEGE/DEGREE	FY 1998	FY 1999	FY 2000	FY 2001	FY 2002	FY 2003	FY 2004	FY 2005	FY 2006	FY 2007	3-Year	Average 5-Year	10-Year	Change in FY07 relative to the 10-Year Avg.
AGRICULTURE, FOOD, AND NATURAL RESOURCES, COLLEGE OF														
Bachelors	356	328	382	369	317	339	335	306	356	344	335.3	336.0	343.2	0%
Masters	31	37	31	42	44	37	43	37	43	55	45.0	43.0	40.0	38%
Doctorate	27	25	26	24	28	32	27	24	31	26	27.0	28.0	27.0	-4%
All	414	390	439	435	389	408	405	367	430	425	407.3	407.0	410.2	4%
ARTS AND SCIENCE, COLLEGE OF														
Bachelors	1,159	1,251	1,410	1,310	1,405	1,490	1,578	1,549	1,633	1,775	1,652.3	1,605.0	1,456.0	22%
Masters	131	119	108	110	118	143	130	136	159	161	152.0	145.8	131.5	22%
Doctorate	97	74	88	100	82	92	94	101	100	87	96.0	94.8	91.5	-5%
All	1,387	1,444	1,606	1,520	1,605	1,725	1,802	1,786	1,892	2,023	1,900.3	1,845.6	1,679.0	20%
BUSINESS, COLLEGE OF														
Bachelors	398	451	467	497	540	529	632	711	777	792	760.0	688.2	579.4	37%
Grad. Certif.					36	60	68	56	51	50	52.3	57.0	N/A	
Masters	101	115	163	139	152	153	191	174	197	213	194.7	185.6	159.8	33%
Doctorate	6	5	5	4	10	5	8	8	6	14	9.3	8.2	7.1	97%
All	505	571	635	640	738	747	899	949	1,031	1,069	1,016.3	939.0	778.4	37%
EDUCATION, COLLEGE OF														
Bachelors	258	314	249	228	219	204	219	234	283	269	262.0	241.8	247.7	9%
Masters	245	294	267	267	297	412	412	360	438	440	412.7	412.4	343.2	28%
Ed. Specialist	24	32	12	36	33	41	23	33	21	36	30.0	30.8	29.1	24%
Doctorate	77	68	76	76	69	70	70	73	62	84	73.0	71.8	72.5	16%
All	604	708	604	607	618	727	724	700	804	829	777.7	756.8	692.5	20%
ENGINEERING, COLLEGE OF														
Bachelors	346	354	401	354	328	322	359	378	343	383	368.0	357.0	356.8	7%
Masters	82	88	84	84	79	103	97	87	107	60	84.7	90.8	87.1	-31%
Doctorate	31	17	34	15	16	30	16	24	33	39	32.0	28.4	25.5	53%
All	459	459	519	453	423	455	472	489	483	482	484.7	476.2	469.4	3%

Table 2.1: Degrees Awarded by Colleges at the University Of Missouri – Columbia (continued)

COLLEGE/DEGREE	FY	FY	FY	FY	FY	FY	FY	FY	FY	FY	3-Year	<u>Average</u>			Change in FY07 relative to the 10-Year Avg.
	1998	1999	2000	2001	2002	2003	2004	2005	2006	2007		5-Year	10-Year		
HEALTH PROFESSIONS, SCHOOL OF															
Bachelors	137	143	83	129	117	99	96	122	113	138	124.3	113.6	117.7	17%	
Masters	7	9	8	60	60	50	39	62	67	56	61.7	54.8	41.8	34%	
Doctorate				1	1	0	0	0	0	0	0.0	0.0	N/A		
All	144	152	91	190	178	149	135	184	180	194	186.0	168.4	159.7	21%	
HUMAN ENVIRONMENTAL SCIENCES, COLLEGE OF															
Bachelors	190	228	262	284	237	228	233	262	250	234	248.7	241.4	240.8	-3%	
Grad. Certif.									1	0	N/A	N/A	N/A		
Masters	20	17	19	16	28	16	15	35	24	15	24.7	21.0	20.5	-27%	
Doctorate	6	6	4	11	6	11	6	3	4	7	4.7	6.2	6.4	9%	
All	216	251	285	311	271	255	254	300	279	256	278.3	268.8	267.8	-4%	
JOURNALISM, SCHOOL OF															
Bachelors	284	300	292	287	320	337	364	404	412	426	414.0	388.6	342.6	24%	
Masters	61	54	55	62	61	75	64	94	70	69	77.7	74.4	66.5	4%	
Doctorate	10	5	4	6	8	8	8	10	14	5	9.7	9.0	7.8	-36%	
All	355	359	351	355	389	420	436	508	496	500	501.3	472.0	416.9	20%	
LAW, SCHOOL OF															
Grad. Certif.					0	33	0	1	18	0	6.3	10.4	N/A		
First Profes.	131	185	166	157	139	172	175	138	139	143	140.0	153.4	154.5	-7%	
Masters		0	6	4	13	7	12	10	7	13	10.0	9.8	N/A		
All	131	185	172	161	152	212	187	149	164	156	156.3	173.6	166.9	-7%	
MEDICINE, SCHOOL OF															
First Profes.	97	87	87	96	92	90	92	89	89	87	88.3	89.4	90.6	-4%	
Masters	37	22	39	34	27	29	22	27	29	25	27.0	26.4	29.1	-14%	
Doctorate	6	10	9	20	6	10	5	7	5	8	6.7	7.0	8.6	-7%	
All	140	119	135	150	125	129	119	123	123	120	122.0	122.8	128.3	-6%	
NATURAL RESOURCES, SCHOOL OF															
Bachelors	126	145	118	83	106	122	104	109	99	131	113.0	113.0	114.3	15%	
Masters	20	22	20	16	14	16	17	27	21	26	24.7	21.4	19.9	31%	
Doctorate	5	2	3	7	6	2	6	9	7	9	8.3	6.6	5.6	61%	
All	151	169	141	106	126	140	127	145	127	166	146.0	141.0	139.8	19%	

Table 2.1: Degrees Awarded by Colleges at the University Of Missouri – Columbia (continued)

COLLEGE/DEGREE	FY 1998	FY 1999	FY 2000	FY 2001	FY 2002	FY 2003	FY 2004	FY 2005	FY 2006	FY 2007		<u>Average</u>			Change in FY07 relative to the 10-Year Avg.
												3-Year	5-Year	10-Year	
NURSING, SCHOOL OF															
Bachelors	115	134	154	145	145	143	134	156	166	201		174.3	160.0	149.3	35%
Masters	42	43	27	34	25	27	26	36	28	33		32.3	30.0	32.1	3%
Doctorate	3	5	2	1	9	4	3	2	4	3		3.0	3.2	3.6	
All	160	182	183	180	179	174	163	194	198	237		209.7	193.2	185.0	28%
SOCIAL WORK, SCHOOL OF															
Bachelors	22	22	22	30	27	35	32	28	29	43		33.3	33.4	29.0	48%
Masters	64	56	65	98	56	108	103	48	65	112		75.0	87.2	77.5	45%
Doctorate			0	0	0	0	0	1	0	1		0.7	0.4	N/A	
All	86	78	87	128	83	143	135	77	94	156		109.0	121.0	106.7	46%
VETERINARY MEDICINE, COLLEGE OF															
First Profes.	64	58	61	62	60	63	64	61	64	59		61.3	62.2	61.6	-4%
Masters	4	13	3	4	3	7	9	7	4	11		7.3	7.6	6.5	69%
Doctorate	6	4	2	2	1	1	0	2	1	4		2.3	1.6	2.3	74%
All	74	75	66	68	64	71	73	70	69	74		71.0	71.4	70.4	5%
GRADUATE SCHOOL															
Grad. Certif.				0	0	0	1	22	14	18		18.0	11.0	N/A	
Masters	3	4	10	34	14	26	42	55	55	61		57.0	47.8	30.4	101%
Doctorate	3	9	3	11	10	9	8	10	10	6		8.7	8.6	7.9	-24%
All	6	13	13	45	24	35	51	87	79	85		83.7	67.4	43.8	94%

IR&P/RS 8/07

Table 2.2: Degrees Awarded by Colleges at the University Of Missouri - Kansas City

COLLEGE/DEGREE	FY 1998	FY 1999	FY 2000	FY 2001	FY 2002	FY 2003	FY 2004	FY 2005	FY 2006	FY 2007	3-Year	Average 5-Year	10-Year	Change in FY07 relative to the 10-Year Avg.
ARTS AND SCIENCES, COLLEGE OF														
Bachelors	564	676	663	660	703	684	755	795	805	778	792.7	763.4	708.3	10%
Masters	164	141	138	147	135	152	145	150	189	161	166.7	159.4	152.2	6%
Doctorate	3	0	0	1	1	3	1	0	4	4	2.7	2.4	1.7	135%
All	731	817	801	808	839	839	901	945	998	943	962.0	925.2	862.2	9%
BIOLOGICAL SCIENCES, SCHOOL OF														
Bachelors	142	149	81	74	60	56	49	57	64	74	65.0	60.0	80.6	-8%
Masters	11	12	9	13	17	14	13	21	16	19	18.7	16.6	14.5	31%
Doctorate	3	0	0	0							N/A	N/A	N/A	
All	156	161	90	87	77	70	62	78	80	93	83.7	76.6	95.4	-3%
BUSINESS AND PUBLIC ADMINISTRATION, SCHOOL OF														
Bachelors	123	146	139	148	162	123	147	180	189	194	187.7	166.6	155.1	25%
Masters	237	253	207	252	219	232	222	213	181	213	202.3	212.2	222.9	-4%
All	360	399	346	400	381	355	369	393	370	407	390.0	378.8	378.0	8%
COMPUTING AND ENGINEERING, SCHOOL OF														
Bachelors			13	7	127	96	146	109	93	89	97.0	106.6	N/A	
Masters					51	59	74	85	75	89	83.0	76.4	N/A	
All			13	7	178	155	220	194	168	178	180.0	183.0	N/A	
DENTISTRY, SCHOOL OF														
Bachelors	25	22	29	29	30	30	28	24	28	31	27.7	28.2	27.6	12%
Grad. Certif.	21	23	18	19	8	21	9	17	23	19	19.7	17.8	17.8	7%
First Profes.	67	78	76	65	83	83	78	79	92	101	90.7	86.6	80.2	26%
Masters	12	4	7	4	4	2	6	2	0	3	1.7	2.6	4.4	-32%
All	125	127	130	117	125	136	121	122	143	154	139.7	135.2	130.0	18%
EDUCATION, SCHOOL OF														
Bachelors	70	85	67	91	89	83	119	107	107	124	112.7	108.0	94.2	32%
Masters	179	179	197	191	188	280	223	200	196	156	184.0	211.0	198.9	-22%
Ed. Specialist	47	36	36	52	43	53	59	41	41	39	40.3	46.6	44.7	-13%
Doctorate	12	7	6	12	8	9	13	7	4	5	5.3	7.6	8.3	-40%
All	308	307	306	346	328	425	414	355	348	324	342.3	373.2	346.1	-6%

Table 2.2: Degrees Awarded by Colleges at the University Of Missouri - Kansas City (continued)

COLLEGE/DEGREE	FY 1998	FY 1999	FY 2000	FY 2001	FY 2002	FY 2003	FY 2004	FY 2005	FY 2006	FY 2007		3-Year	<u>Average</u> 5-Year	10-Year	Change in FY07 relative to the 10-Year Avg.
GRADUATE STUDIES, SCHOOL OF															
Doctorate	23	35	38	42	38	36	33	29	43	43		38.3	36.8	36.0	19%
LAW, SCHOOL OF															
First Profes.	131	166	131	146	116	132	159	153	156	176		161.7	155.2	146.6	20%
Masters	25	20	19	9	18	29	22	15	21	19		18.3	21.2	19.7	-4%
All	156	186	150	155	134	161	181	168	177	195		180.0	176.4	166.3	17%
MEDICINE, SCHOOL OF															
First Profes.	74	87	86	76	97	81	93	83	90	84		85.7	86.2	85.1	-1%
MUSIC, CONSERVATORY OF															
Bachelors	34	32	34	52	33	49	52	55	57	52		54.7	53.0	45.0	16%
Grad. Certif.						1	0	2	0	0		0.7	0.6	N/A	
Masters	33	41	26	40	36	30	29	49	41	47		45.7	39.2	37.2	26%
Doctorate	11	19	18	20	9	12	17	9	9	14		10.7	12.2	13.8	1%
All	78	92	78	112	78	92	98	115	107	113		111.7	105.0	96.3	17%
NURSING, SCHOOL OF															
Bachelors	13	23	19	20	17	14	14	61	76	76		71.0	48.2	33.3	128%
Masters	77	68	66	55	67	69	58	58	69	59		62.0	62.6	64.6	-9%
Doctorate	1	2	0	1	3	2	1	3	1	5		3.0	2.4	1.9	163%
All	91	93	85	76	87	85	73	122	146	140		136.0	113.2	99.8	40%
PHARMACY, SCHOOL OF															
Bachelors	30	5	0	0	0	0	6	5	6	10		7.0	5.4	6.2	61%
First Profes.	28	33	55	57	63	68	60	62	77	77		72.0	68.8	58.0	33%
Masters	0	1	5	1	6	10	3	1	3	3		2.3	4.0	3.3	-9%
Doctorate	1	2	1	0								N/A	N/A	N/A	
All	59	41	61	58	69	78	69	68	86	90		81.3	78.2	67.9	33%

Table 2.3: Degrees Awarded by Colleges at the University Of Missouri – Rolla

COLLEGE/DEGREE	FY 1998	FY 1999	FY 2000	FY 2001	FY 2002	FY 2003	FY 2004	FY 2005	FY 2006	FY 2007	3-Year	<u>Average</u> 5-Year	10-Year	Change in FY07 relative to the 10-Year Avg.
ARTS AND SCIENCES, COLLEGE OF														
Bachelors	149	178	164	172	153	149	160	162	155	174	163.7	160.0	161.6	8%
Grad. Certif.								1	0	2	1.0	0.6	N/A	0%
Masters	51	41	58	45	37	37	50	59	54	49	54.0	49.8	48.1	2%
Doctorate	20	12	18	10	16	9	17	11	20	18	16.3	15.0	15.1	19%
All	220	231	240	227	206	195	227	233	229	243	235.0	225.4	225.1	8%
ENGINEERING, SCHOOL OF														
Bachelors	466	467	435	407	455	432	464	445	439	501	461.7	456.2	451.1	11%
Grad. Certif.					22	20	70	82	69	113	88.0	70.8	N/A	0%
Masters	264	229	224	278	286	327	381	310	278	255	281.0	310.2	283.2	-10%
Doctorate	30	23	15	23	23	31	31	41	36	36	37.7	35.0	28.9	25%
All	760	719	674	708	786	810	946	878	822	905	868.3	872.2	800.8	13%
MANAGEMENT AND INFORMATION SYSTEMS, SCHOOL OF														
Bachelors					20	52	47	64	69	53	62.0	57.0	N/A	
Grad. Certif.								0	6	12	6.0	N/A	N/A	
Masters					0	3	6	15	20	18	17.7	12.4	N/A	
All					20	55	53	79	95	83	85.7	73.0	N/A	
MATERIALS, ENERGY, AND EARTH RESOURCES, SCHOOL OF														
U-Grad. Certif.										1	N/A	N/A	N/A	
Bachelors	128	134	144	106	114	110	85	60	81	106	82.3	88.4	106.8	-1%
Masters	23	21	35	43	43	47	65	56	40	34	43.3	48.4	40.7	-16%
Doctorate	11	9	13	9	6	11	13	14	18	9	13.7	13.0	11.3	-20%
All	162	164	192	158	163	168	163	130	139	150	139.7	150.0	158.9	-6%

Table 2.4: Degrees Awarded by Colleges at the University Of Missouri - St. Louis

COLLEGE/DEGREE	FY	FY	FY	FY	FY	FY	FY	FY	FY	FY	3-Year	Average			Change in FY07 relative to the 10-Year Avg.
	1998	1999	2000	2001	2002	2003	2004	2005	2006	2007		5-Year	10-Year		
ARTS AND SCIENCES, COLLEGE OF															
Bachelors	671	711	722	747	724	632	644	640	674	759	691.0	669.8	692.4	10%	
Grad. Certif.	12	11	10	14	14	19	18	25	26	34	28.3	24.4	18.3	86%	
Masters	123	102	100	139	177	187	188	208	201	211	206.7	199.0	163.6	29%	
Doctorate	25	22	28	21	26	20	23	27	30	30	29.0	26.0	25.2	19%	
All	831	846	860	921	941	858	873	900	931	1,034	955.0	919.2	899.5	15%	
BUSINESS ADMINISTRATION, COLLEGE OF															
Bachelors	403	450	470	499	547	566	612	532	542	579	551.0	566.2	520.0	11%	
Grad. Certif.	2	3	17	23	30	46	17	21	16	16	17.7	23.2	19.1	-16%	
Masters	68	92	91	100	127	135	117	145	133	163	147.0	138.6	117.1	39%	
Doctorate					0	0	0	0	0	1	0.3	0.2	0.0	0%	
All	473	545	578	622	704	747	746	698	691	759	716.0	728.2	656.3	16%	
EDUCATION, COLLEGE OF															
Bachelors	336	309	289	322	306	271	289	276	247	260	261.0	268.6	290.5	-10%	
Grad. Certif.							5	6	11	8	8.3	N/A	N/A		
Masters	298	289	236	245	227	239	267	333	302	252	295.7	278.6	268.8	-6%	
Ed. Specialist								3	29	31	21.0	N/A	N/A		
Doctorate	9	6	6	8	13	20	15	21	24	18	21.0	19.6	14.0	29%	
All	643	604	531	575	546	530	576	639	613	569	607.0	585.4	582.6	-2%	
FINE ARTS AND COMMUNICATION, COLLEGE OF															
Bachelors					102	205	174	219	219	210	216.0	205.4	N/A		
Masters							1	7	16	19	14.0	N/A	N/A		
All					102	205	175	226	235	229	230.0	214.0	N/A		
NURSING, COLLEGE OF															
Bachelors	144	143	117	94	110	115	123	152	160	163	158.3	142.6	132.1	23%	
Masters	46	94	66	30	88	34	64	60	46	48	51.3	50.4	57.6	-17%	
Doctorate	0	2	4	4	5	4	1	1	4	2	2.3	2.4	2.7	-26%	
All	190	239	187	128	203	153	188	213	210	213	212.0	195.4	192.4	11%	

Table 2.4: Degrees Awarded by Colleges at the University Of Missouri - St. Louis (continued)

COLLEGE/DEGREE	FY 1998	FY 1999	FY 2000	FY 2001	FY 2002	FY 2003	FY 2004	FY 2005	FY 2006	FY 2007		3-Year	<u>Average</u> 5-Year	10-Year	Change in FY07 relative to the 10-Year Avg.
OPTOMETRY, COLLEGE OF															
First Profes.	38	43	44	45	42	39	35	46	34	44		41.3	39.6	41.0	7%
Masters	0	0	0	0	0	2	1	0	0	0		0.0	0.6	0.3	-100%
Doctorate	0	0	0	0	1	1	1	2	0	1		1.0	1.0	0.6	67%
All	38	43	44	45	43	42	37	48	34	45		42.3	41.2	41.9	7%
ENGINEERING PROGRAM															
Bachelors	14	17	17	33	29	26	42	42	33	48		41.0	38.2	30.1	59%
EVENING COLLEGE															
Bachelors	95	77	80	82	69	38	48	41				N/A	N/A	N/A	
GRADUATE SCHOOL															
Bachelors									30	20		N/A	N/A	N/A	
Grad. Certif.	6	7	14	19	20	22	14	24	24	21		23.0	21.0	17.1	23%
Masters	8	13	14	31	18	25	37	33	32	25		30.0	30.4	23.6	6%
All	14	20	28	50	38	47	51	57	86	66		69.7	61.4	45.7	44%

IR&P/RS 8/07