

**The 2008-2009 Report of Degrees Awarded
by the University of Missouri**

Randy Sade
Assistant Research Analyst

Office of Institutional Research and Planning
University of Missouri System

September 2009

IR&P 2009, Report 5

<http://www.umsystem.edu/ums/departments/fa/planning/>

The 2008-2009 Report of Degrees Awarded by the University of Missouri

Executive Summary

This report includes graphs and tables of degrees awarded by each campus since 2000. The first table provides a summary of degrees by level for each campus, while the second table series gives the number of awards by the colleges of each campus. The *Department Detail Summary* reflects the number of degrees awarded by academic department. These tables also show the average number of degrees over a 3, 5, & 10-year period and the percent change in FY 2009 that is relative to the 10-year average.

The highlights of the report include:

- The University of Missouri System awarded a record 14,747 degrees, a 15% growth in FY 2009 relative to the 10-year average. (Table 1)
- Relative to the 10-year average, the number of FY 2009 masters degrees for the University of Missouri System increased 18%, Education Specialist increased 62%, and graduate certificates increased 94%.
- Comparing FY 2009 degrees to the 10-year averages, the most notable increases are: bachelors degrees awarded are up 15% at UM-Columbia, 17% at UM-Kansas City, and 18% at Missouri S&T; masters degrees are up 24% at UM-Columbia; and doctorates are up 10% at UM-Columbia and 29% at UM-St. Louis.
- First Professional degrees at both UM-Kansas City and UM-St. Louis increased 7% when comparing FY 2009 to the 10-year average.

Notes Regarding Use of the Report:

- The official annual reporting period is from July 1 to June 30 of the following calendar year. For example, FY09 includes summer and fall graduates from 2008 and the spring graduates of 2009.
- Please note the axis scale range when considering graphs. It may change from campus to campus.
- Previous year's tables may differ because tables in the report have been changed from the use of running averages to 3-, 5-, and 10-year averages.
- This report includes a 10-year average as related to FY 2009.
- Source for this report is the printed Completions Report.

Technical Notes for Use with the Report:

Footnotes

- Footnotes are of the utmost importance in reading tables in the appendix.

Name Changes

- If a program name changes, the report history is changed to reflect the new name and is footnoted.
- If a degree name or description is changed, the report history is changed to the new description and is footnoted.
- If a department name changes, the report history is changed to the new description and NO footnotes are made.
- If a school or college changes, the report history is changed to the new description and NO footnotes are made.

Program Moves

- If a program moves to another department or school, the data are reported as is – that is, report history is not changed and the new data are reported in the new department. A new footnote is added, i.e., program is moving. Eventually – when there are no more degrees for the old department, the old department is hidden in the report.
- If a program moves to another school or college, the data are reported as is – that is, report history is not changed and the new data are reported in the new school or college. A footnote is added, i.e., program is moving. Eventually – when there are no more degrees for the old program, the former program is hidden in the report.

Figure 1: Rate of Change in Total Degrees Awarded by Campus, since 2000

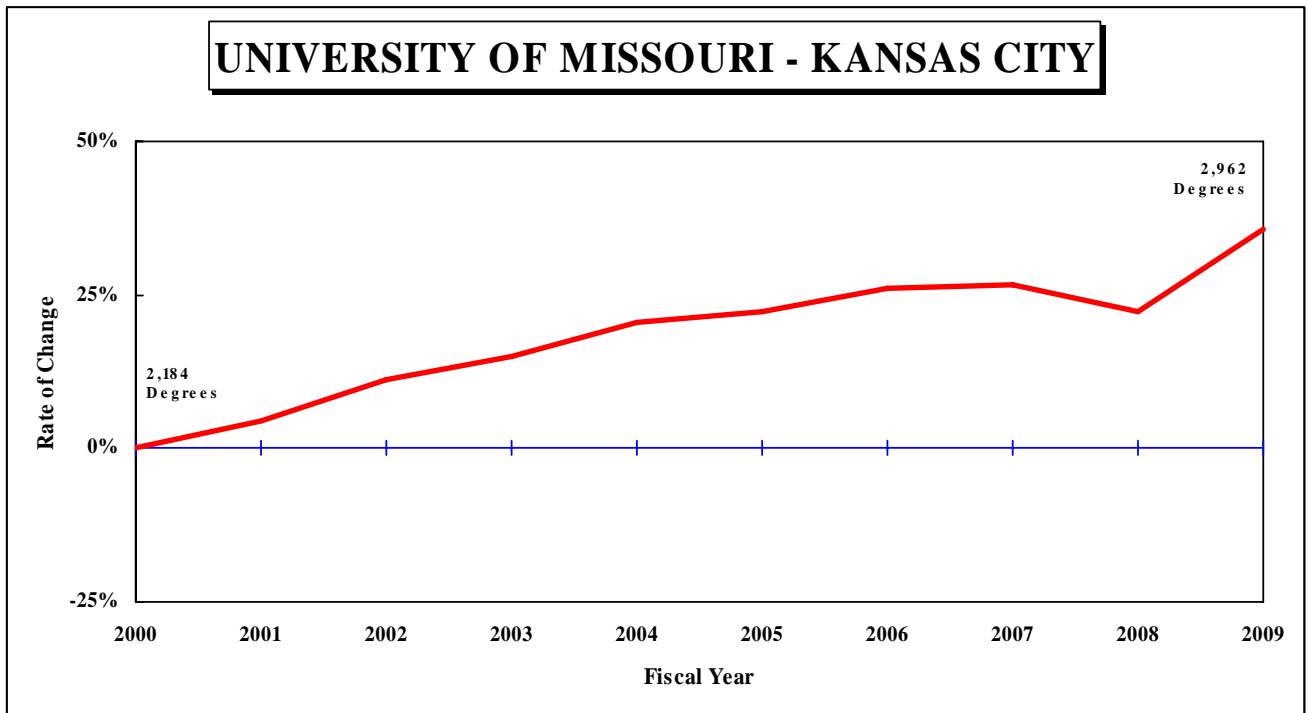
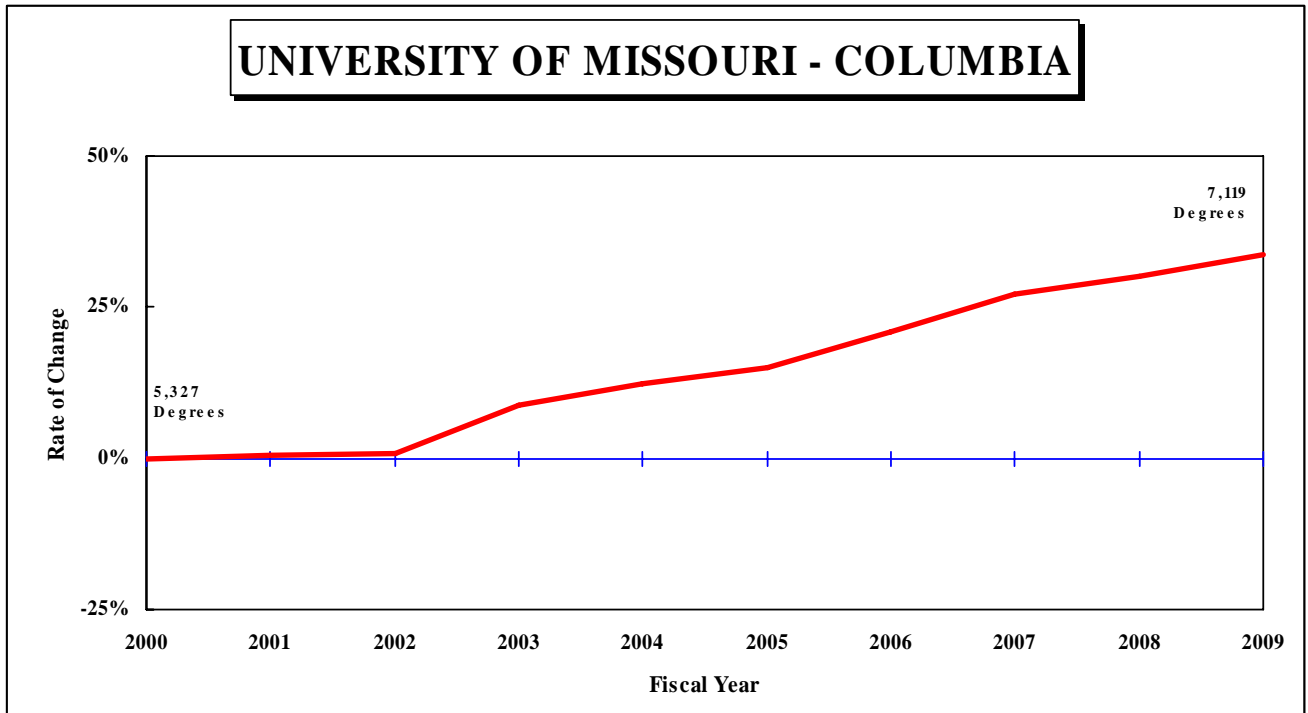


Figure 1: Rate of Change in Total Degrees Awarded by Campus, since 2000
 - Continued

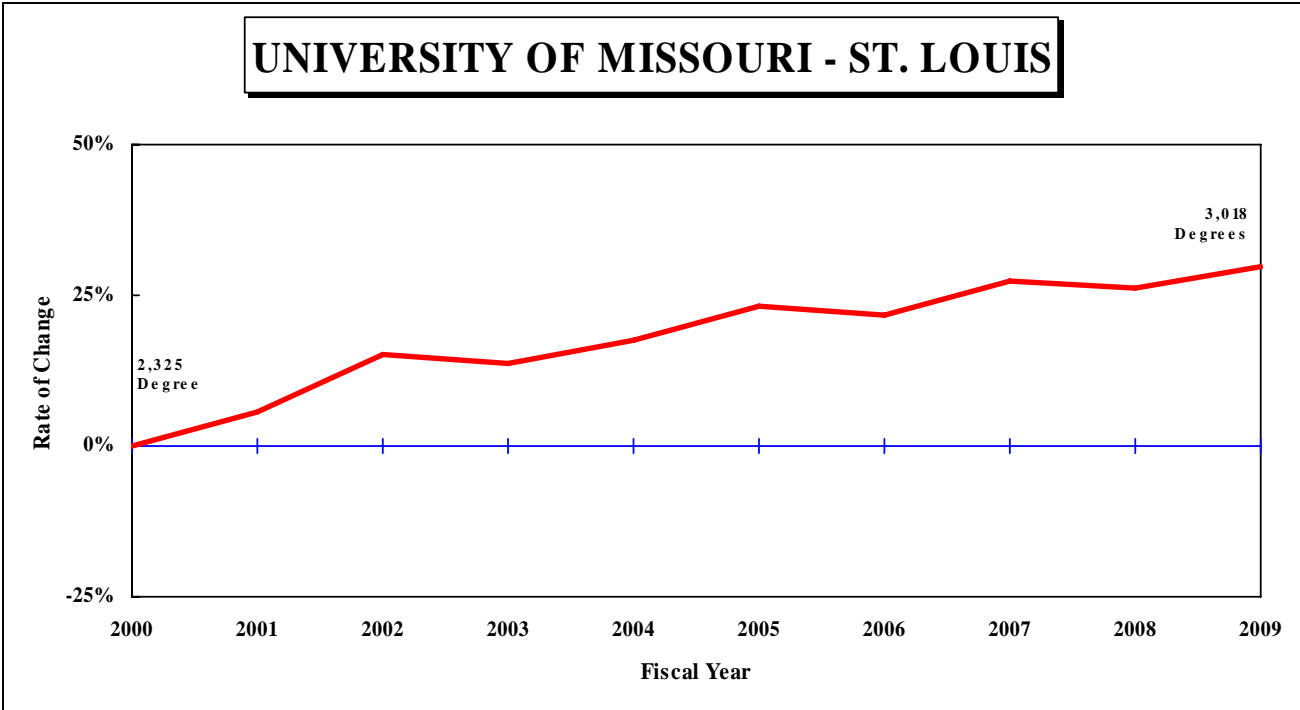
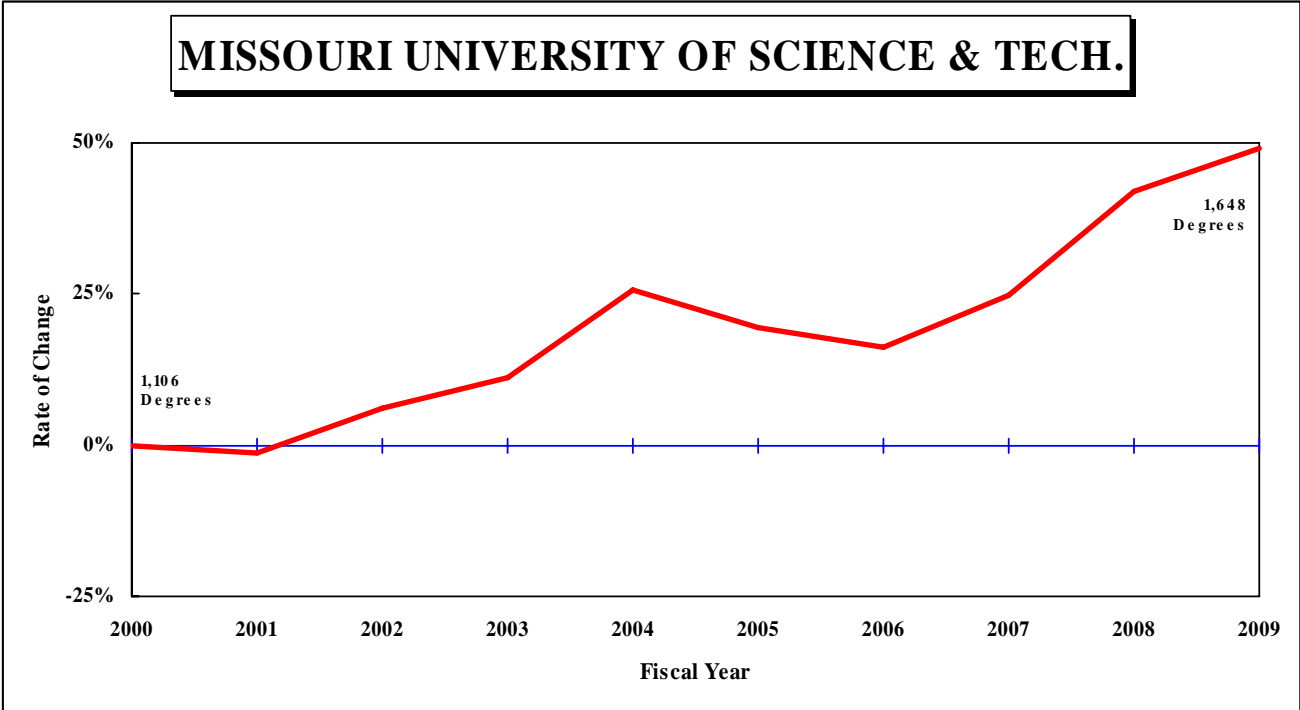


Figure 1: Rate of Change in Total Degrees Awarded by Campus, since 2000
Continued

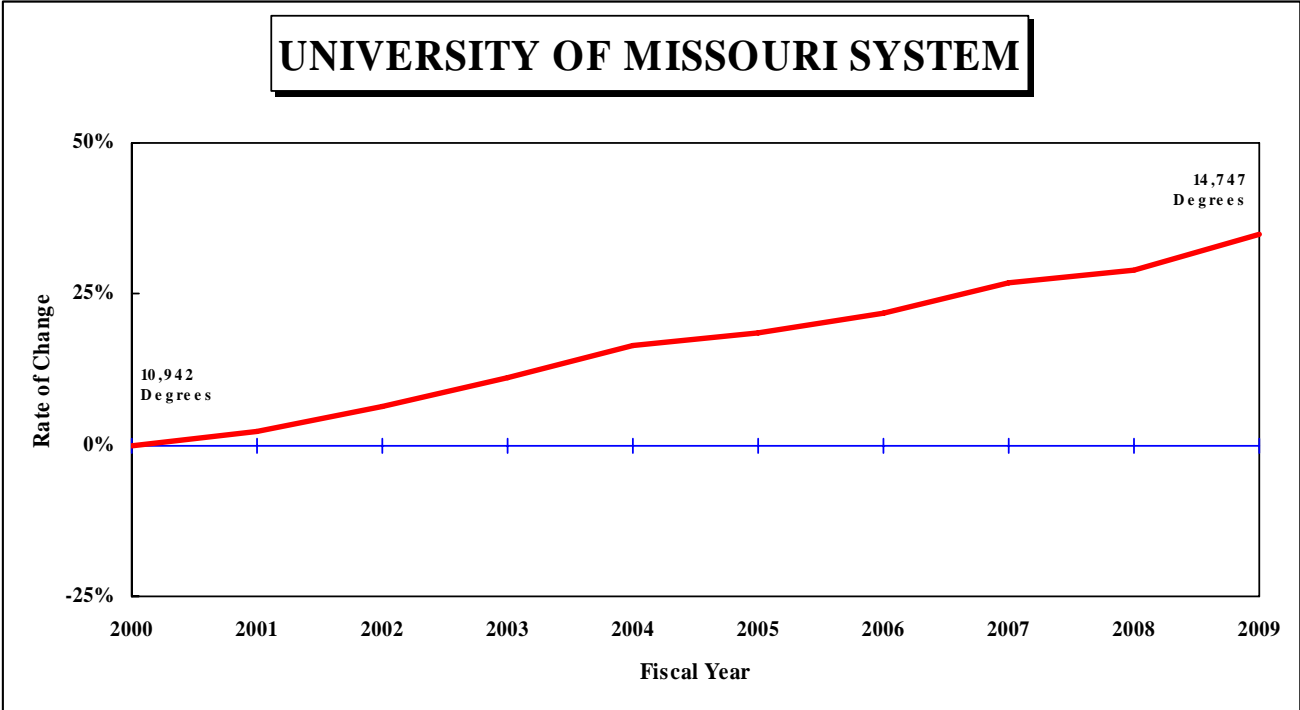


Figure 2: Rate of Change in Total Degrees Awarded by Campus, since 2000

UNIVERSITY OF MISSOURI - COLUMBIA

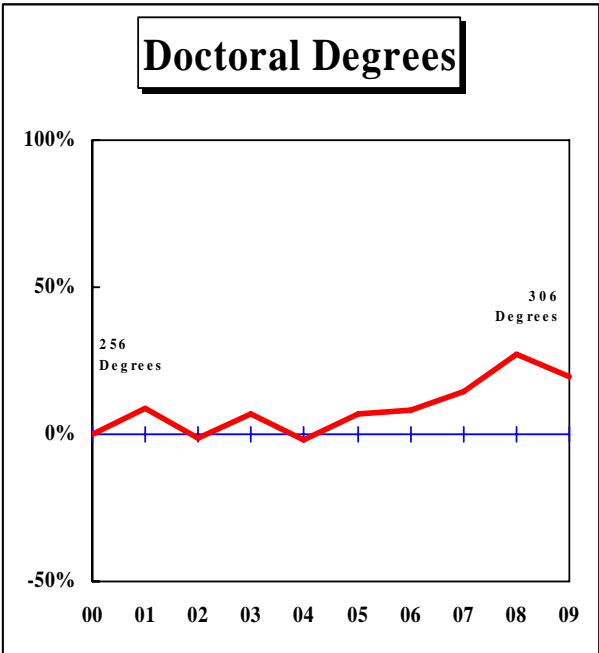
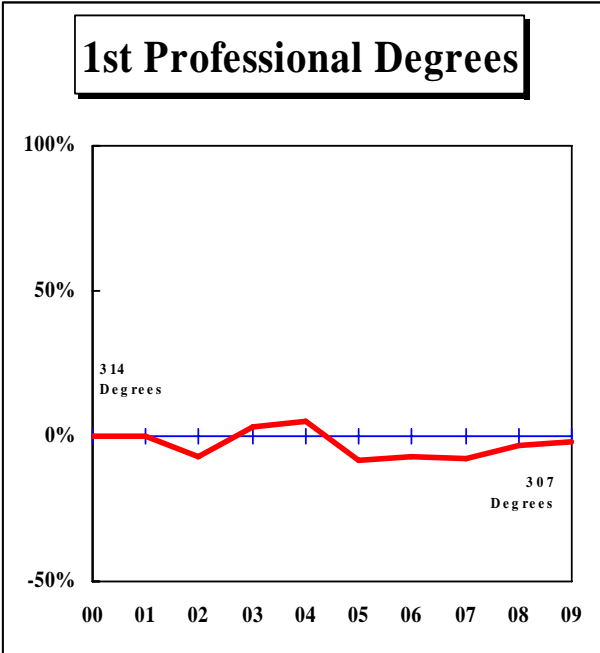
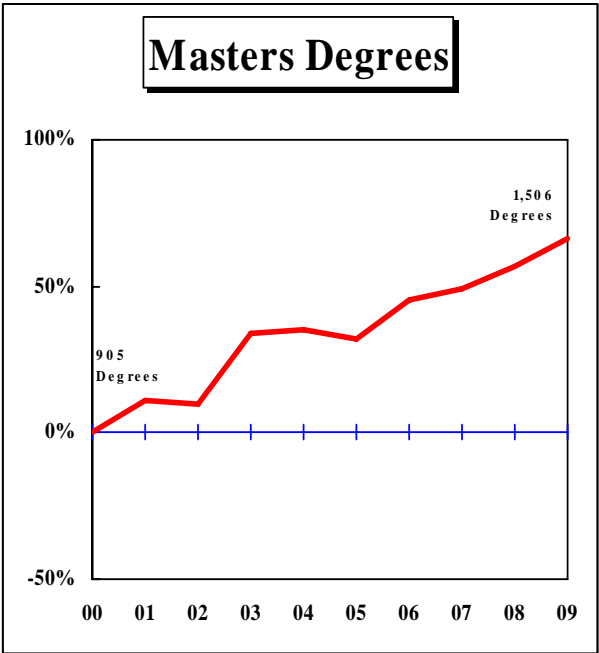
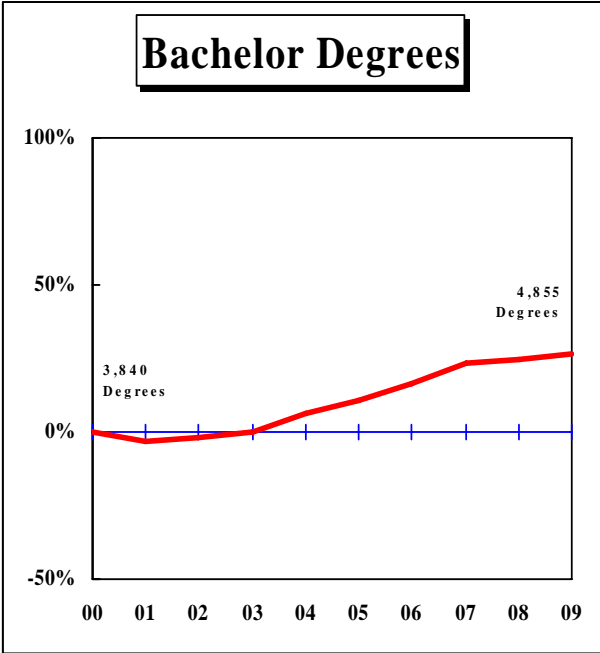


Figure 2: Rate of Change in Total Degrees Awarded by Campus, since 2000
 - Continued

UNIVERSITY OF MISSOURI - KANSAS CITY

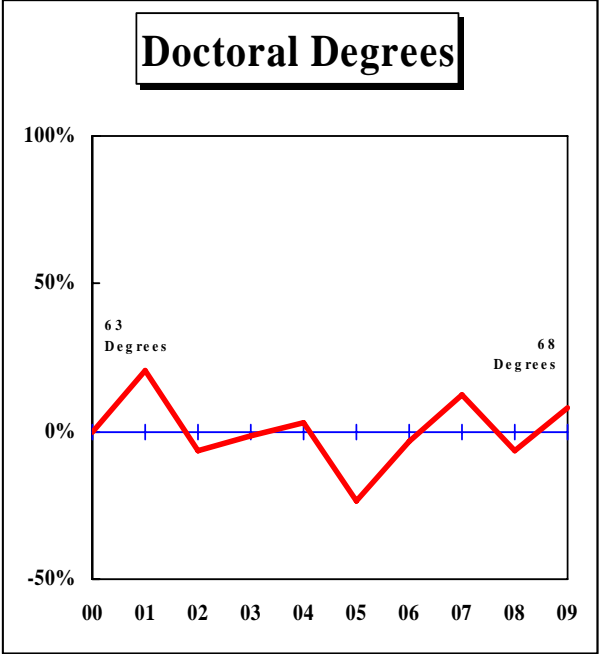
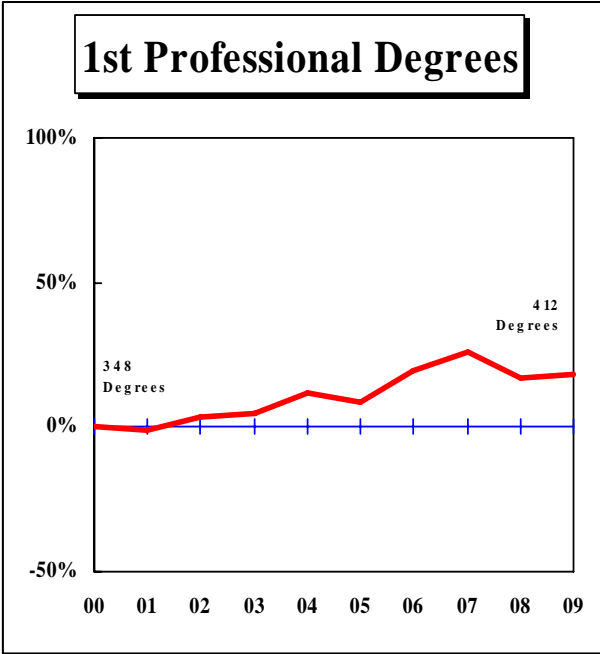
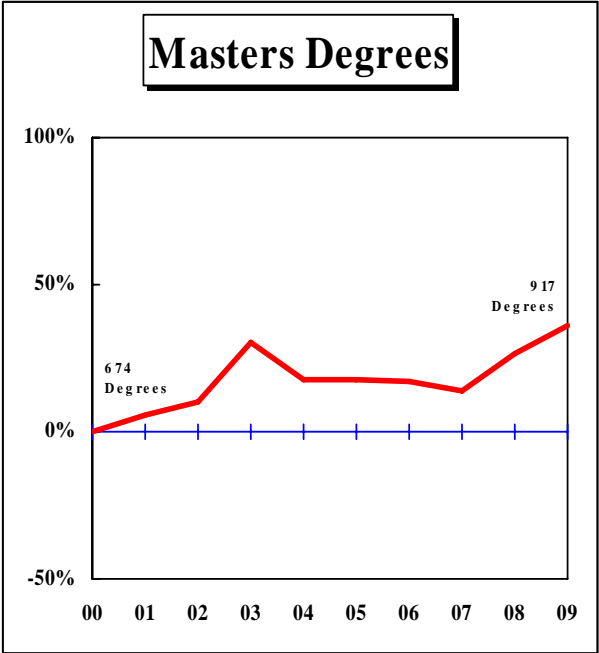
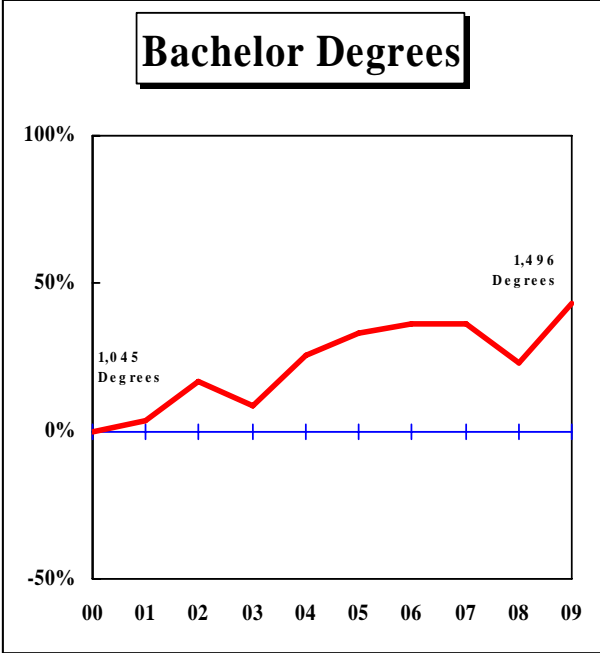


Figure 2: Rate of Change in Total Degrees Awarded by Campus, since 2000
 - Continued

MISSOURI UNIVERSITY OF SCIENCE AND TECHNOLOGY

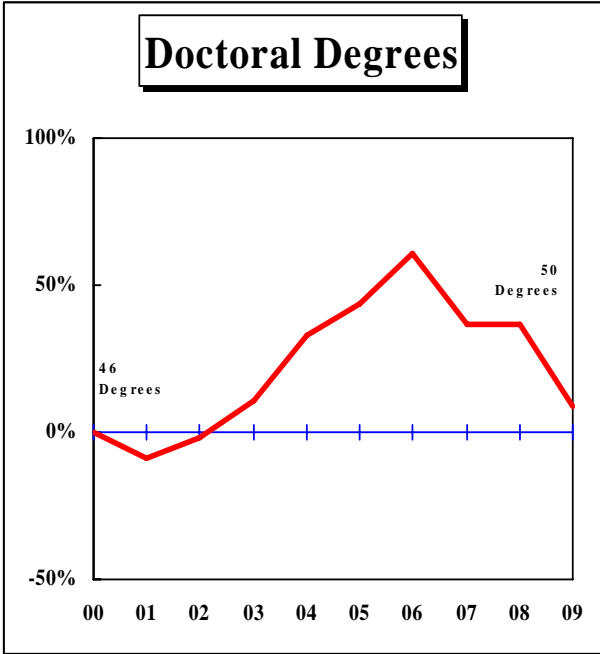
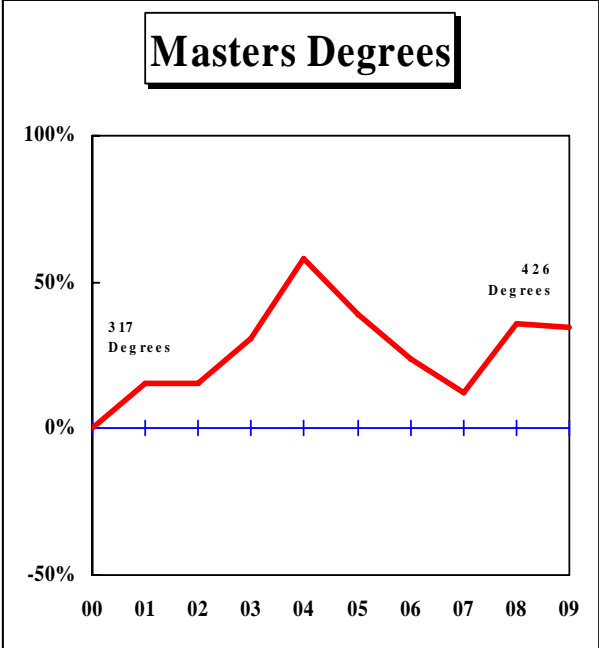
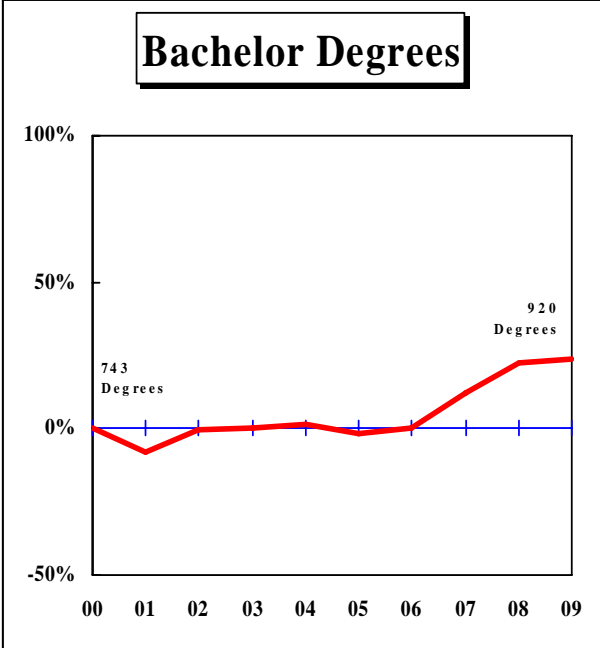


Figure 2: Rate of Change in Total Degrees Awarded by Campus, since 2000
 - Continued

UNIVERSITY OF MISSOURI – ST. LOUIS

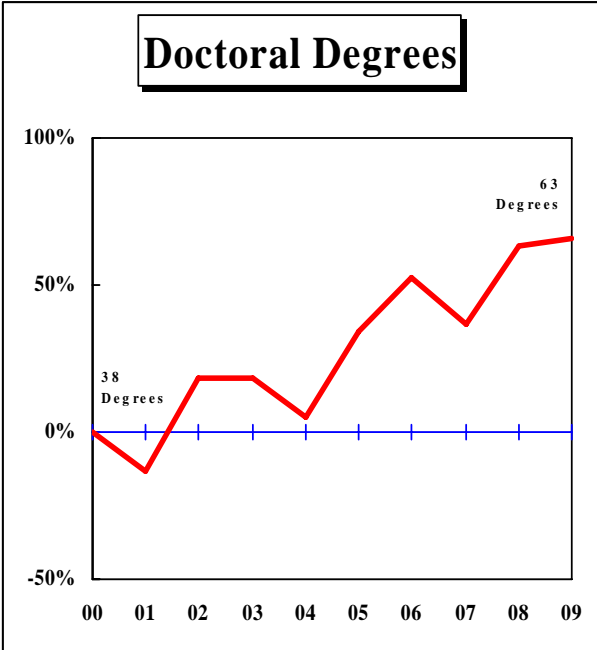
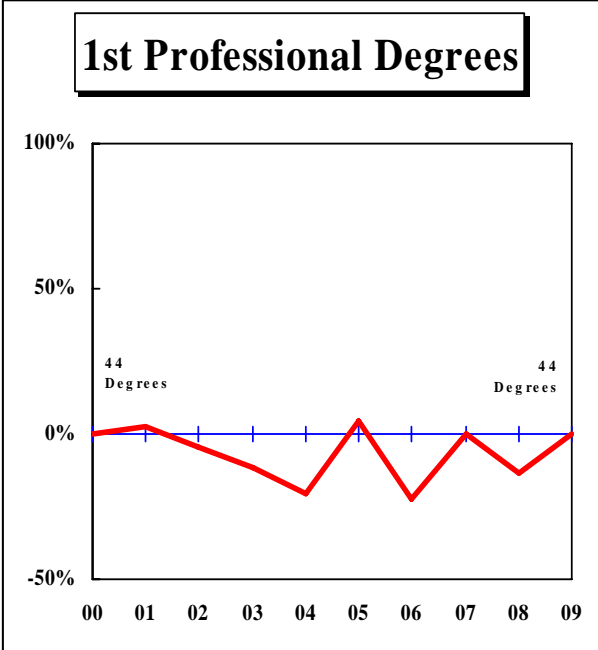
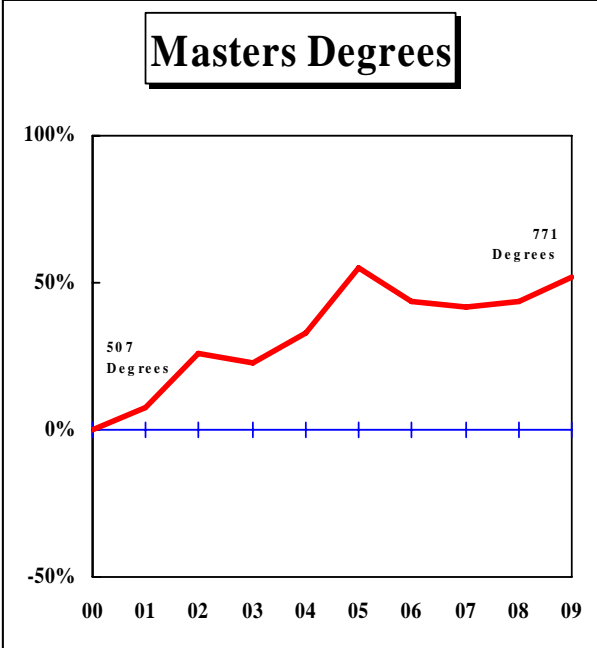
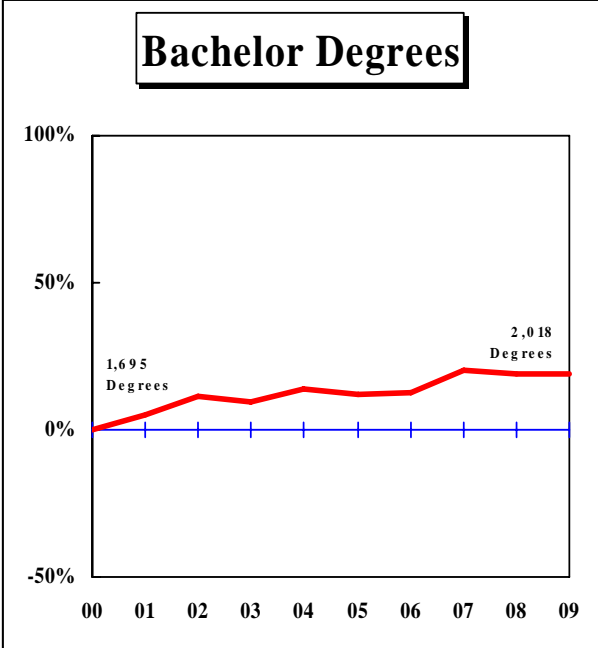


Figure 2: Rate of Change in Total Degrees Awarded by Campus, since 2000
 - Continued

UNIVERSITY OF MISSOURI SYSTEM

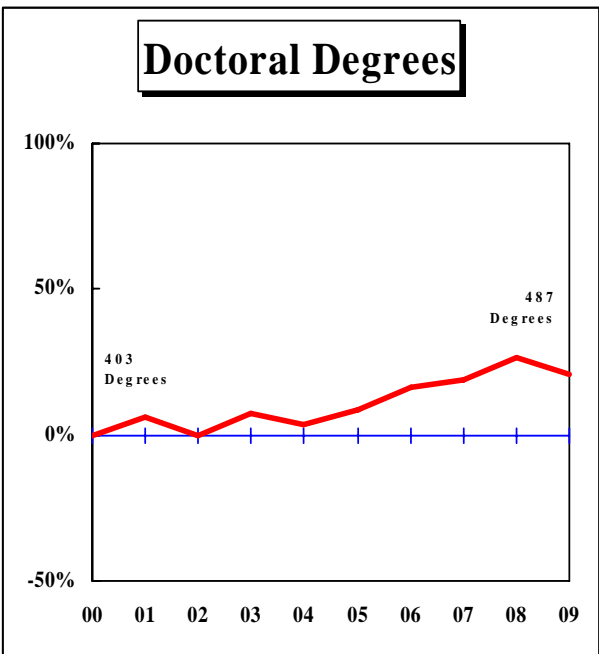
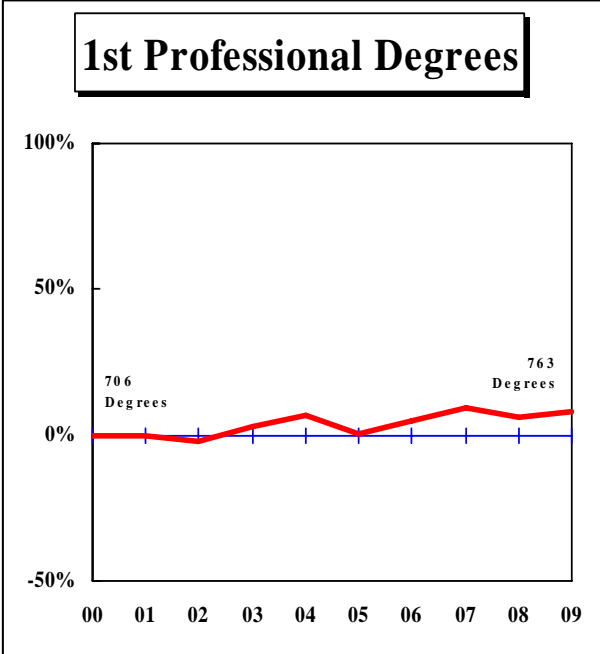
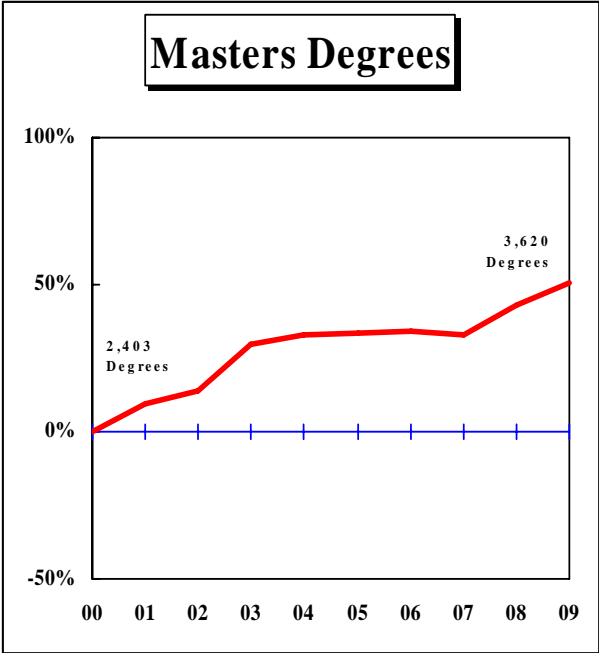
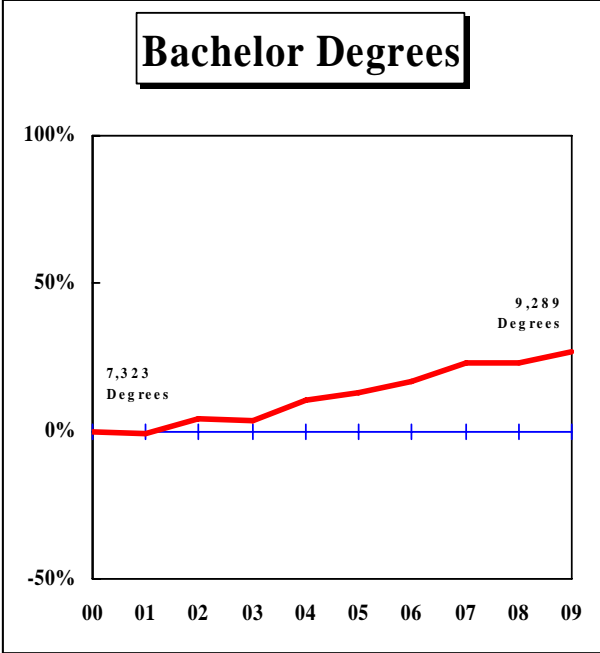


Table 1. Degrees Awarded at the University Of Missouri, July 1, 1999 Through June 30, 2009

DEGREE	FY 2000	FY 2001	FY 2002	FY 2003	FY 2004	FY 2005	FY 2006	FY 2007	FY 2008	FY 2009	3-Year	<u>Average</u> 5-Year	10-Year	Change in FY09 relative to the 10-Year Avg.
UNIVERSITY OF MISSOURI - COLUMBIA														
Bachelors	3,840	3,716	3,761	3,848	4,086	4,259	4,461	4,736	4,779	4,855	4,790.0	4,618.0	4,234.1	15%
Graduate Certificate			36	93	69	79	84	68	69	88	75.0	77.6	N/A	
First Professional	314	315	291	325	331	288	292	289	303	307	299.7	295.8	305.5	0%
Masters	905	1,004	991	1,209	1,222	1,195	1,314	1,350	1,421	1,506	1,425.7	1,357.2	1,211.7	24%
Education Specialist	12	36	33	41	23	33	21	36	34	57	42.3	36.2	32.6	75%
Doctorate	256	278	252	274	251	274	277	293	326	306	308.3	295.2	278.7	10%
Total, All Degrees	5,327	5,349	5,364	5,790	5,982	6,128	6,449	6,772	6,932	7,119	6,941.0	6,680.0	6,121.2	16%
UNIVERSITY OF MISSOURI - KANSAS CITY														
Bachelors	1,045	1,081	1,221	1,135	1,316	1,393	1,425	1,428	1,289	1,496	1,404.3	1,406.2	1,282.9	17%
Graduate Certificate	18	19	8	22	9	19	23	19	24	20	21.0	21.0	18.1	10%
First Professional	348	344	359	364	390	377	415	438	408	412	419.3	410.0	385.5	7%
Masters	674	712	741	877	795	794	791	769	852	917	846.0	824.6	792.2	16%
Education Specialist	36	52	43	53	59	41	41	39	40	49	42.7	42.0	45.3	8%
Doctorate	63	76	59	62	65	48	61	71	59	68	66.0	61.4	63.2	8%
Total, All Degrees	2,184	2,284	2,431	2,513	2,634	2,672	2,756	2,764	2,672	2,962	2,799.3	2,765.2	2,587.2	14%
MISSOURI UNIVERSITY OF SCIENCE AND TECHNOLOGY														
Undergrad. Certificate								1	3	2	N/A	N/A	N/A	
Bachelors	743	685	742	743	756	731	744	834	910	920	888.0	827.8	780.8	18%
Graduate Certificate			22	20	70	83	75	127	164	250	180.3	139.8	N/A	
Masters	317	366	366	414	502	440	392	356	430	426	404.0	408.8	400.9	6%
Doctorate	46	42	45	51	61	66	74	63	63	50	58.7	63.2	56.1	-11%
Total, All Degrees	1,106	1,093	1,175	1,228	1,389	1,320	1,285	1,381	1,570	1,648	1,533.0	1,440.8	1,319.5	25%
UNIVERSITY OF MISSOURI - ST. LOUIS														
Bachelors	1,695	1,777	1,887	1,853	1,932	1,902	1,905	2,039	2,016	2,018	2,024.3	1,976.0	1,902.4	6%
Graduate Certificate	41	56	64	87	54	76	77	79	64	80	74.3	75.2	67.8	18%
First Professional	44	45	42	39	35	46	34	44	38	44	42.0	41.2	41.1	7%
Masters	507	545	637	622	675	786	730	718	729	771	739.3	746.8	672.0	15%
Education Specialist						3	29	31	28	42	33.7	26.6	N/A	
Doctorate	38	33	45	45	40	51	58	52	62	63	59.0	57.2	48.7	29%
Total, All Degrees	2,325	2,456	2,675	2,646	2,736	2,864	2,833	2,963	2,937	3,018	2,972.7	2,923.0	2,745.3	10%

Table 1. Degrees Awarded at the University Of Missouri, July 1, 2000 Through June 30, 2009 (continued)

DEGREE	FY	FY	FY	FY	FY	FY	FY	FY	FY	FY	<u>Average</u>			Change in FY09 relative to the 10-Year Avg.
	2000	2001	2002	2003	2004	2005	2006	2007	2008	2009	3-Year	5-Year	10-Year	
UNIVERSITY OF MISSOURI SYSTEM														
Undergrad. Certificate								1	3	2	2.0	N/A	N/A	
Bachelors	7,323	7,259	7,611	7,579	8,090	8,285	8,535	9,037	8,994	9,289	9,106.7	8,828.0	8,200.2	13%
Graduate Certificate	59	75	130	222	202	257	259	293	321	438	350.7	313.6	225.6	94%
First Professional	706	704	692	728	756	711	741	771	749	763	761.0	747.0	732.1	4%
Masters	2,403	2,627	2,735	3,122	3,194	3,215	3,227	3,193	3,432	3,620	3,415.0	3,337.4	3,076.8	18%
Education Specialist	48	88	76	94	82	77	91	106	102	148	118.7	104.8	91.2	62%
Doctorate	403	429	401	432	417	439	470	479	510	487	492.0	477.0	446.7	9%
Total, All Degrees	10,942	11,182	11,645	12,177	12,741	12,984	13,323	13,880	14,111	14,747	14,246.0	13,809.0	12,773.2	15%

IR&P/RS 8/09

Table 2.1: Degrees Awarded by Colleges at the University of Missouri – Columbia

COLLEGE/DEGREE	FY 2000	FY 2001	FY 2002	FY 2003	FY 2004	FY 2005	FY 2006	FY 2007	FY 2008	FY 2009	<u>Average</u>			Change in FY09 relative to the 10-Year Avg.
											3-Year	5-Year	10-Year	
AGRICULTURE, FOOD, AND NATURAL RESOURCES, COLLEGE OF														
Bachelors	382	369	317	339	335	306	356	344	367	391	367.3	352.8	350.6	12%
Masters	31	42	44	37	43	37	43	55	46	51	50.7	46.4	42.9	19%
Doctorate	26	24	28	32	27	24	31	26	26	32	28.0	27.8	27.6	16%
All	439	435	389	408	405	367	430	425	439	474	446.0	427.0	421.1	13%
ARTS AND SCIENCE, COLLEGE OF														
Bachelors	1,410	1,310	1,405	1,490	1,578	1,549	1,633	1,775	1,725	1,741	1,747.0	1,684.6	1,561.6	11%
Masters	108	110	118	143	130	136	159	161	158	176	165.0	158.0	139.9	26%
Doctorate	88	100	82	92	94	101	100	87	108	97	97.3	98.6	94.9	2%
All	1,606	1,520	1,605	1,725	1,802	1,786	1,892	2,023	1,991	2,014	2,009.3	1,941.2	1,796.4	12%
BUSINESS, COLLEGE OF														
Bachelors	467	497	540	529	632	711	777	792	807	779	792.7	773.2	653.1	19%
Grad. Certif.			36	60	68	56	51	50	30	9	29.7	39.2	N/A	
Masters	163	139	152	153	191	174	197	213	214	204	210.3	200.4	180.0	13%
Doctorate	5	4	10	5	8	8	6	14	6	6	8.7	8.0	7.2	-17%
All	635	640	738	747	899	949	1,031	1,069	1,057	998	1,041.3	1,020.8	876.3	14%
EDUCATION, COLLEGE OF														
Bachelors	249	228	219	204	219	234	283	269	249	246	254.7	256.2	240.0	3%
Masters	267	267	297	412	412	360	438	440	450	485	458.3	434.6	382.8	27%
Ed. Specialist	12	36	33	41	23	33	21	36	34	57	42.3	36.2	32.6	75%
Doctorate	76	76	69	70	70	73	62	84	87	87	86.0	78.6	75.4	15%
All	604	607	618	727	724	700	804	829	820	875	841.3	805.6	730.8	20%
ENGINEERING, COLLEGE OF														
Bachelors	401	354	328	322	359	378	343	383	368	386	379.0	371.6	362.2	7%
Masters	84	84	79	103	97	87	107	60	93	90	81.0	87.4	88.4	2%
Doctorate	34	15	16	30	16	24	33	39	36	24	33.0	31.2	26.7	-10%
All	519	453	423	455	472	489	483	482	497	500	493.0	490.2	477.3	5%

Table 2.1: Degrees Awarded by Colleges at the University of Missouri – Columbia (continued)

COLLEGE/DEGREE	FY 2000	FY 2001	FY 2002	FY 2003	FY 2004	FY 2005	FY 2006	FY 2007	FY 2008	FY 2009	<u>Average</u>			Change in FY09 relative to the 10-Year Avg.
											3-Year	5-Year	10-Year	
HEALTH PROFESSIONS, SCHOOL OF														
Bachelors	83	129	117	99	96	122	113	138	153	155	148.7	136.2	120.5	29%
Masters	8	60	60	50	39	62	67	56	96	82	78.0	72.6	58.0	41%
Doctorate		1	1	0	0	0	0	0	0	0	0.0	0.0	N/A	
All	91	190	178	149	135	184	180	194	249	237	226.7	208.8	178.7	33%
HUMAN ENVIRONMENTAL SCIENCES, COLLEGE OF														
Bachelors	262	284	237	228	233	262	250	234	278	298	270.0	264.4	256.6	16%
Grad. Certif.							1	0	0	0	0.0	N/A	N/A	
Masters	19	16	28	16	15	35	24	15	18	35	22.7	25.4	22.1	58%
Doctorate	4	11	6	11	6	3	4	7	5	9	7.0	5.6	6.6	36%
All	285	311	271	255	254	300	279	256	301	342	299.7	295.6	285.4	20%
JOURNALISM, SCHOOL OF														
Bachelors	292	287	320	337	364	404	412	426	475	520	473.7	447.4	383.7	36%
Masters	55	62	61	75	64	94	70	69	91	107	89.0	86.2	74.8	43%
Doctorate	4	6	8	8	8	10	14	5	10	9	8.0	9.6	8.2	10%
All	351	355	389	420	436	508	496	500	576	636	570.7	543.2	466.7	36%
LAW, SCHOOL OF														
Grad. Certif.			0	33	0	1	18	0	21	16	12.3	11.2	N/A	
First Profes.	166	157	139	172	175	138	139	143	148	152	147.7	144.0	152.9	-1%
Masters	6	4	13	7	12	10	7	13	15	13	13.7	11.6	10.0	
All	172	161	152	212	187	149	164	156	184	181	173.7	166.8	171.8	5%
MEDICINE, SCHOOL OF														
First Profes.	87	96	92	90	92	89	89	87	89	85	87.0	87.8	89.6	-5%
Masters	39	34	27	29	22	27	29	25	32	36	31.0	29.8	30.0	20%
Doctorate	9	20	6	10	5	7	5	8	14	10	10.7	8.8	9.4	6%
All	135	150	125	129	119	123	123	120	135	131	128.7	126.4	129.0	2%
NATURAL RESOURCES, SCHOOL OF														
Bachelors	118	83	106	122	104	109	99	131	113	115	119.7	113.4	110.0	5%
Masters	20	16	14	16	17	27	21	26	18	20	21.3	22.4	19.5	3%
Doctorate	3	7	6	2	6	9	7	9	10	7	8.7	8.4	6.6	6%
All	141	106	126	140	127	145	127	166	141	142	149.7	144.2	136.1	4%

Table 2.1: Degrees Awarded by Colleges at the University of Missouri – Columbia (continued)

COLLEGE/DEGREE	FY 2000	FY 2001	FY 2002	FY 2003	FY 2004	FY 2005	FY 2006	FY 2007	FY 2008	FY 2009	3-Year	Average 5-Year	10-Year	Change in FY09 relative to the 10-Year Avg.
NURSING, SCHOOL OF														
Bachelors	154	145	145	143	134	156	166	201	187	190	192.7	180.0	162.1	17%
Masters	27	34	25	27	26	36	28	33	40	50	41.0	37.4	32.6	53%
Doctorate	2	1	9	4	3	2	4	3	4	5	4.0	3.6	3.7	35%
All	183	180	179	174	163	194	198	237	231	245	237.7	221.0	198.4	23%
SOCIAL WORK, SCHOOL OF														
Bachelors	22	30	27	35	32	28	29	43	57	34	44.7	38.2	33.7	1%
Masters	65	98	56	108	103	48	65	112	58	64	78.0	69.4	77.7	-18%
Doctorate	0	0	0	0	0	1	0	1	4	9	4.7	3.0	1.5	
All	87	128	83	143	135	77	94	156	119	107	127.3	110.6	112.9	-5%
VETERINARY MEDICINE, COLLEGE OF														
First Profes.	61	62	60	63	64	61	64	59	66	70	65.0	64.0	63.0	11%
Masters	3	4	3	7	9	7	4	11	11	8	10.0	8.2	6.7	19%
Doctorate	2	2	1	1	0	2	1	4	2	2	2.7	2.2	1.7	18%
All	66	68	64	71	73	70	69	74	79	80	77.7	74.4	71.4	12%
GRADUATE SCHOOL														
Grad. Certif.		0	0	0	1	22	14	18	18	63	33.0	27.0	N/A	
Masters	10	34	14	26	42	55	55	61	81	85	75.7	67.4	46.3	84%
Doctorate	3	11	10	9	8	10	10	6	14	9	9.7	9.8	9.0	0%
All	13	45	24	35	51	87	79	85	113	157	118.3	104.2	68.9	128%

IR&P/RS 8/09

Table 2.2: Degrees Awarded by Colleges at the University of Missouri - Kansas City

COLLEGE/DEGREE	FY 2000	FY 2001	FY 2002	FY 2003	FY 2004	FY 2005	FY 2006	FY 2007	FY 2008	FY 2009	3-Year	Average 5-Year	10-Year	Change in FY09 relative to the 10-Year Avg.
ARTS AND SCIENCES, COLLEGE OF														
Bachelors	663	660	703	684	755	795	805	778	713	829	773.3	784.0	738.5	12%
Masters	138	147	135	152	145	150	189	161	198	187	182.0	177.0	160.2	17%
Doctorate	0	1	1	3	1	0	4	4	2	4	3.3	2.8	2.0	100%
All	801	808	839	839	901	945	998	943	913	1,020	958.7	963.8	900.7	13%
BIOLOGICAL SCIENCES, SCHOOL OF														
Bachelors	81	74	60	56	49	57	64	74	58	61	64.3	62.8	63.4	-4%
Masters	9	13	17	14	13	21	16	19	18	20	19.0	18.8	16.0	25%
Doctorate	0	0									N/A	N/A	N/A	
All	90	87	77	70	62	78	80	93	76	81	83.3	81.6	79.4	2%
BUSINESS AND PUBLIC ADMINISTRATION, SCHOOL OF														
Bachelors	139	148	162	123	147	180	189	194	178	195	189.0	187.2	165.5	18%
Masters	207	252	219	232	222	213	181	213	228	240	227.0	215.0	220.7	9%
All	346	400	381	355	369	393	370	407	406	435	416.0	402.2	386.2	13%
COMPUTING AND ENGINEERING, SCHOOL OF														
Bachelors	13	7	127	96	146	109	93	89	80	86	85.0	91.4	84.6	2%
Masters			51	59	74	85	75	89	112	144	115.0	101.0	68.9	109%
All	13	7	178	155	220	194	168	178	192	230	200.0	192.4	153.5	50%
DENTISTRY, SCHOOL OF														
Bachelors	29	29	30	30	28	24	28	31	28	27	28.7	27.6	28.4	-5%
Grad. Certif.	18	19	8	21	9	17	23	19	22	17	19.3	19.6	17.3	-2%
First Profes.	76	65	83	83	78	79	92	101	100	102	101.0	94.8	85.9	19%
Masters	7	4	4	2	6	2	0	3	4	9	5.3	3.6	4.1	120%
All	130	117	125	136	121	122	143	154	154	155	154.3	145.6	135.7	14%
EDUCATION, SCHOOL OF														
Bachelors	67	91	89	83	119	107	107	124	98	118	113.3	110.8	100.3	18%
Masters	197	191	188	280	223	200	196	156	147	184	162.3	176.6	196.2	-6%
Ed. Specialist	36	52	43	53	59	41	41	39	40	49	42.7	42.0	45.3	8%
Doctorate	6	12	8	9	13	7	4	5	10	9	8.0	7.0	8.3	8%
All	306	346	328	425	414	355	348	324	295	360	326.3	336.4	350.1	3%

Table 2.2: Degrees Awarded by Colleges at the University of Missouri - Kansas City (continued)

COLLEGE/DEGREE	FY 2000	FY 2001	FY 2002	FY 2003	FY 2004	FY 2005	FY 2006	FY 2007	FY 2008	FY 2009	Average 3-Year	Average 5-Year	Average 10-Year	Change in FY09 relative to the 10-Year Avg.
GRADUATE STUDIES, SCHOOL OF														
Grad. Certif.										1	N/A	N/A	N/A	
Doctorate	38	42	38	36	33	29	43	43	32	24	33.0	34.2	35.8	-33%
All	38	42	38	36	33	29	43	43	32	25	33.3	34.4	35.9	-30%
LAW, SCHOOL OF														
First Profes.	131	146	116	132	159	153	156	176	150	153	159.7	157.6	147.2	4%
Masters	19	9	18	29	22	15	21	19	22	32	24.3	21.8	20.6	55%
All	150	155	134	161	181	168	177	195	172	185	184.0	179.4	167.8	10%
MEDICINE, SCHOOL OF														
First Profes.	86	76	97	81	93	83	90	84	86	87	85.7	86.0	86.3	1%
MUSIC AND DANCE, CONSERVATORY OF														
Bachelors	34	52	33	49	52	55	57	52	49	70	57.0	56.6	50.3	39%
Grad. Certif.				1	0	2	0	0	2	2	1.3	1.2	N/A	
Masters	26	40	36	30	29	49	41	47	47	43	45.7	45.4	38.8	11%
Doctorate	18	20	9	12	17	9	9	14	12	21	15.7	13.0	14.1	49%
All	78	112	78	92	98	115	107	113	110	136	119.7	116.2	103.9	31%
NURSING, SCHOOL OF														
Bachelors	19	20	17	14	14	61	76	76	80	102	86.0	79.0	47.9	113%
Masters	66	55	67	69	58	58	69	59	75	57	63.7	63.6	63.3	-10%
Doctorate	0	1	3	2	1	3	1	5	3	10	6.0	4.4	2.9	245%
All	85	76	87	85	73	122	146	140	158	169	155.7	147.0	114.1	48%
PHARMACY, SCHOOL OF														
Bachelors	0	0	0	0	6	5	6	10	5	8	7.7	6.8	4.0	100%
First Profes.	55	57	63	68	60	62	77	77	72	70	73.0	71.6	66.1	6%
Masters	5	1	6	10	3	1	3	3	1	1	1.7	1.8	3.4	-71%
Doctorate	1	0									N/A	N/A	N/A	
All	61	58	69	78	69	68	86	90	78	79	82.3	80.2	73.6	7%

Table 2.3: Degrees Awarded by Colleges at the Missouri University of Science and Technology

This information is no longer provided since Missouri S&T eliminated schools and colleges in FY 2008.

Table 2.4: Degrees Awarded by Colleges at the University of Missouri - St. Louis

COLLEGE/DEGREE	FY 2000	FY 2001	FY 2002	FY 2003	FY 2004	FY 2005	FY 2006	FY 2007	FY 2008	FY 2009	<u>Average</u>			Change in FY09 relative to the 10-Year Avg.
											3-Year	5-Year	10-Year	
ARTS AND SCIENCES, COLLEGE OF														
Bachelors	722	747	724	632	644	640	674	759	734	749	747.3	711.2	702.5	7%
Grad. Certif.	10	14	14	19	18	25	26	34	18	30	27.3	26.6	20.8	44%
Masters	100	139	177	187	188	208	201	211	214	215	213.3	209.8	184.0	17%
Doctorate	28	21	26	20	23	27	30	30	24	34	29.3	29.0	26.3	29%
All	860	921	941	858	873	900	931	1,034	990	1,028	1,017.3	976.6	933.6	10%
BUSINESS ADMINISTRATION, COLLEGE OF														
Bachelors	470	499	547	566	612	532	542	579	598	573	583.3	564.8	551.8	4%
Grad. Certif.	17	23	30	46	17	21	16	16	18	12	15.3	16.6	21.6	-44%
Masters	91	100	127	135	117	145	133	163	163	210	178.7	162.8	138.4	52%
Doctorate			0	0	0	0	0	1	1	0	0.7	0.4	N/A	
All	578	622	704	747	746	698	691	759	780	795	778.0	744.6	712.0	12%
EDUCATION, COLLEGE OF														
Bachelors	289	322	306	271	289	276	247	260	230	271	253.7	256.8	276.1	-2%
Grad. Certif.					5	6	11	8	1	4	4.3	6.0	N/A	
Masters	236	245	227	239	267	333	302	252	255	262	256.3	280.8	261.8	0%
Ed. Specialist						3	29	31	28	42	33.7	26.6	N/A	
Doctorate	6	8	13	20	15	21	24	18	27	27	24.0	23.4	17.9	51%
All	531	575	546	530	576	639	613	569	541	606	572.0	593.6	572.6	6%
FINE ARTS AND COMMUNICATION, COLLEGE OF														
Bachelors			102	205	174	219	219	210	210	188	202.7	209.2	N/A	
Masters					1	7	16	19	26	14	19.7	16.4	N/A	
All			102	205	175	226	235	229	236	202	222.3	225.6	N/A	
NURSING, COLLEGE OF														
Bachelors	117	94	110	115	123	152	160	163	186	181	176.7	168.4	140.1	29%
Grad. Certif.									5	1	N/A	N/A	N/A	
Masters	66	30	88	34	64	60	46	48	51	43	47.3	49.6	53.0	-19%
Doctorate	4	4	5	4	1	1	4	2	9	2	4.3	3.6	3.6	-44%
All	187	128	203	153	188	213	210	213	251	227	230.3	222.8	197.3	15%

Table 2.4: Degrees Awarded by Colleges at the University of Missouri - St. Louis (continued)

COLLEGE/DEGREE	FY 2000	FY 2001	FY 2002	FY 2003	FY 2004	FY 2005	FY 2006	FY 2007	FY 2008	FY 2009	3-Year	<u>Average</u> 5-Year	10-Year	Change in FY09 relative to the 10-Year Avg.
OPTOMETRY, COLLEGE OF														
First Profes.	44	45	42	39	35	46	34	44	38	44	42.0	41.2	41.1	7%
Masters	0	0	0	2	1	0	0	0	0	1	0.3	0.2	0.4	150%
Doctorate	0	0	1	1	1	2	0	1	1	0	0.7	0.8	0.7	-100%
All	44	45	43	42	37	48	34	45	39	45	43.0	42.2	42.2	7%
ENGINEERING PROGRAM														
Bachelors	17	33	29	26	42	42	33	48	46	52	48.7	44.2	36.8	41%
EVENING COLLEGE														
Bachelors	80	82	69	38	48	41					N/A	N/A	N/A	
GRADUATE SCHOOL														
Bachelors							30	20	12	4	12.0	N/A	N/A	
Grad. Certif.	14	19	20	22	14	24	24	21	22	33	25.3	24.8	21.3	55%
Masters	14	31	18	25	37	33	32	25	20	26	23.7	27.2	26.1	0%
All	28	50	38	47	51	57	86	66	54	63	61.0	65.2	54.0	17%

IR&P/RS 8/09