

**The 2009-2010 Report of Degrees Awarded  
by the University of Missouri**

Randy Sade  
Assistant Research Analyst

Office of Institutional Research and Planning  
University of Missouri System

September 2010

IR&P 2010, Report 2

<http://www.umsystem.edu/ums/departments/fa/planning/>

# The 2009-2010 Report of Degrees Awarded by the University of Missouri

## Executive Summary

This report includes graphs and tables of degrees awarded by each campus since 2001. The first table provides a summary of degrees by level for each campus, while the second table series gives the number of awards by the colleges of each campus. The *Department Detail Summary* reflects the number of degrees awarded by academic department. These tables also show the average number of degrees over a 3, 5, & 10-year period and the percent change in FY 2010 that is relative to the 10-year average.

The highlights of the report include:

- The University of Missouri System awarded a record 15,175 degrees, a 15% growth in FY 2010 relative to the 10-year average. (Table 1)
- Relative to the 10-year average, the number of FY 2010 masters degrees for the University of Missouri System increased 13%, Education Specialist increased 25%, and graduate certificates increased 91%.
- Comparing FY 2010 degrees to the 10-year averages, the most notable increases are: bachelors degrees awarded are up 14% at UM-Columbia, 22% at UM-Kansas City, and 24% at Missouri S&T; masters degrees are up 19% at UM-Columbia; and doctorates are up 13% at UM-Columbia, 27% at UM-Kansas City, and 23% at UM-St. Louis.
- First Professional degrees at UM-Kansas City increased 15% when comparing FY 2010 to the 10-year average.

## Notes Regarding Use of the Report:

- The official annual reporting period is from July 1 to June 30 of the following calendar year. For example, FY10 includes summer and fall graduates from 2009 and the spring graduates of 2010.
- Please note the axis scale range when considering graphs. It may change from campus to campus.
- Previous year's tables may differ because tables in the report have been changed from the use of running averages to 3-, 5-, and 10-year averages.
- This report includes a 10-year average as related to FY 2010.
- Source for this report is the printed Completions Report.

## Technical Notes for Use with the Report:

### Footnotes

- Footnotes are of the utmost importance in reading tables in the appendix.

### Name Changes

- If a program name changes, the report history is changed to reflect the new name and is footnoted.
- If a degree name or description is changed, the report history is changed to the new description and is footnoted.
- If a department name changes, the report history is changed to the new description and NO footnotes are made.
- If a school or college changes, the report history is changed to the new description and NO footnotes are made.

### Program Moves

- If a program moves to another department or school, the data are reported as is – that is, report history is not changed and the new data are reported in the new department. A new footnote is added, i.e., program is moving. Eventually – when there are no more degrees for the old department, the old department is hidden in the report.
- If a program moves to another school or college, the data are reported as is – that is, report history is not changed and the new data are reported in the new school or college. A footnote is added, i.e., program is moving. Eventually – when there are no more degrees for the old program, the former program is hidden in the report.

Figure 1: Rate of Change in Total Degrees Awarded by Campus, since 2001

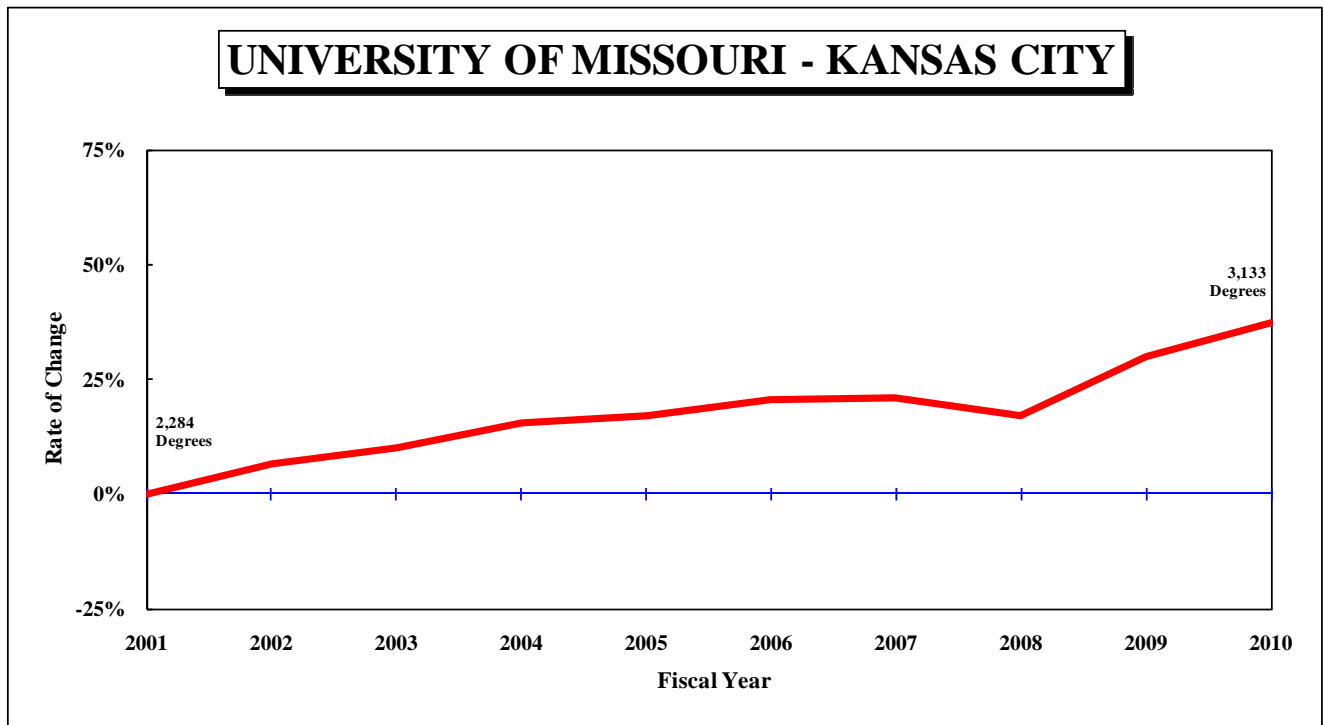
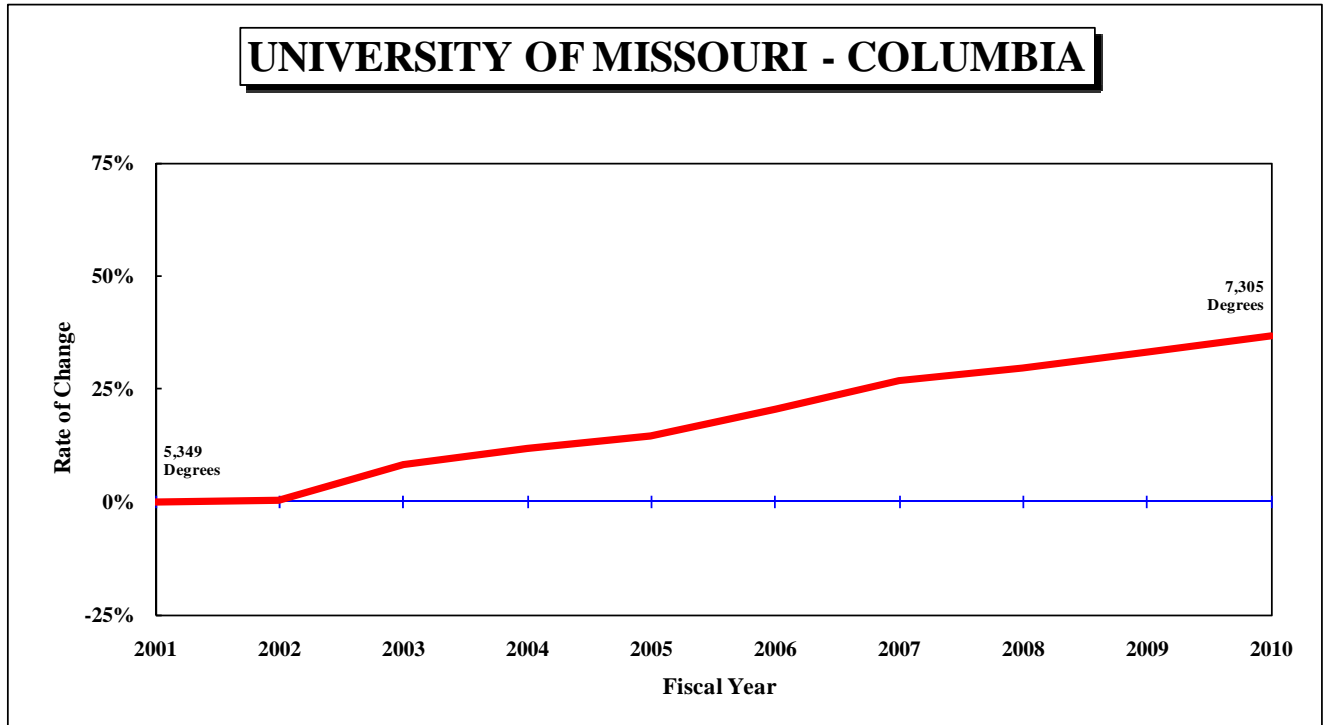


Figure 1: Rate of Change in Total Degrees Awarded by Campus, since 2001  
 - Continued

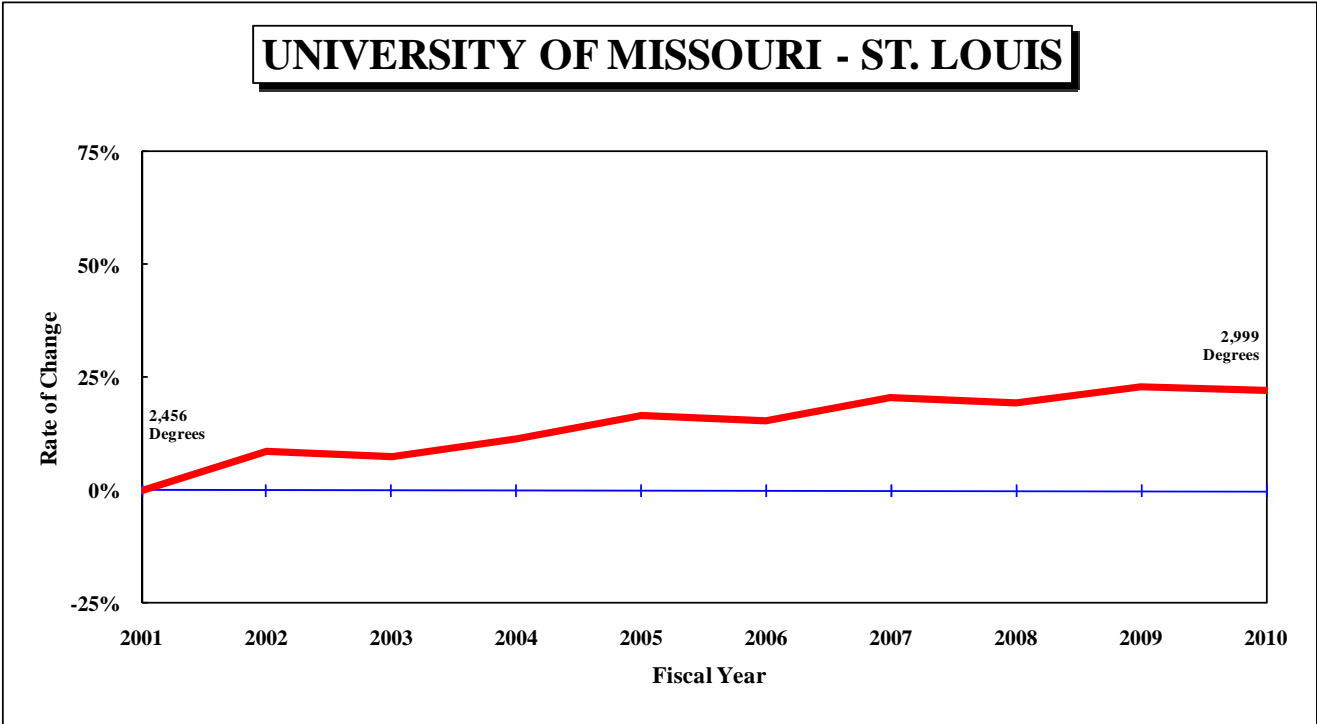
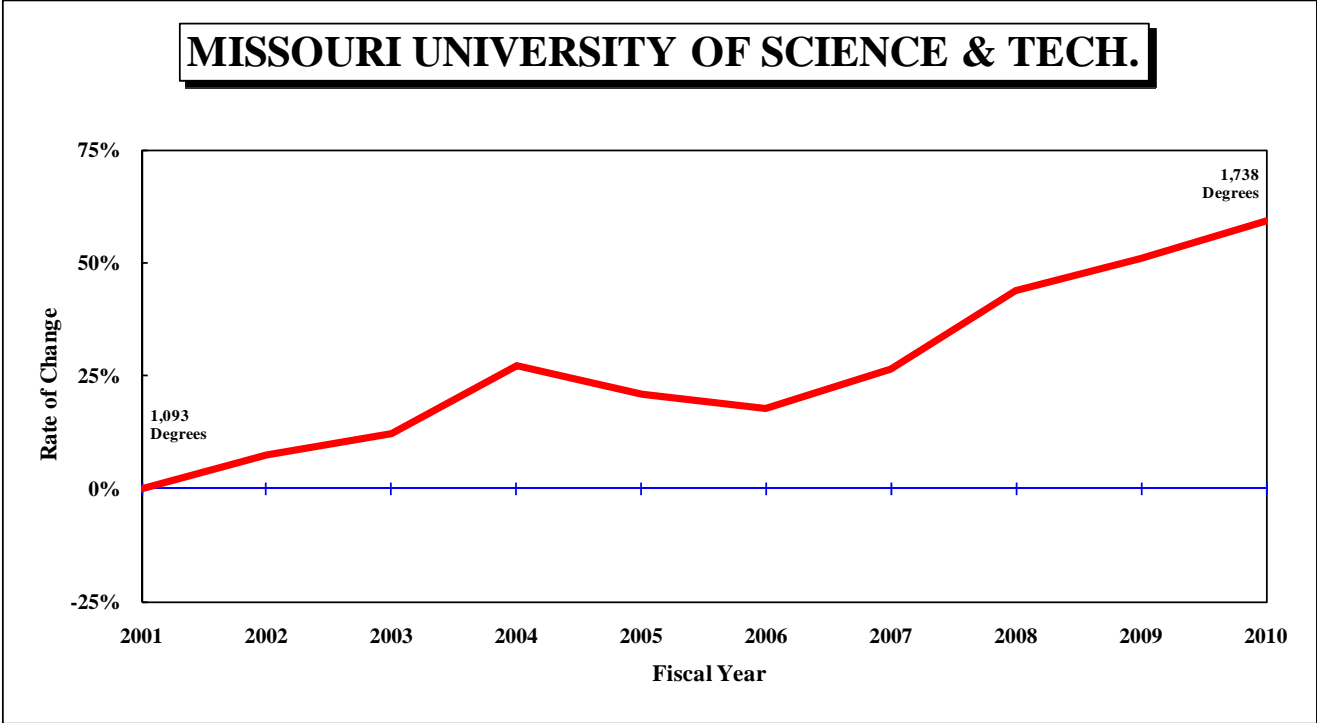


Figure 1: Rate of Change in Total Degrees Awarded by Campus, since 2001  
Continued

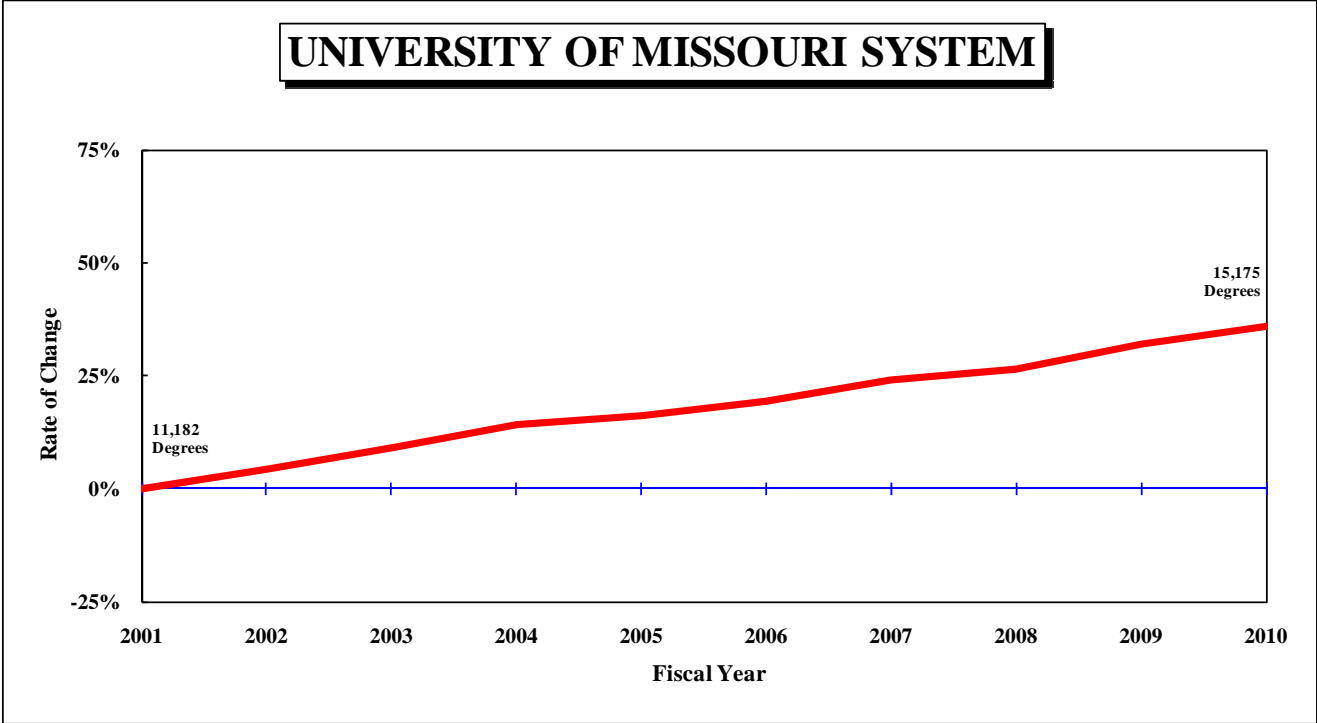


Figure 2: Rate of Change in Total Degrees Awarded by Campus, since 2001

UNIVERSITY OF MISSOURI - COLUMBIA

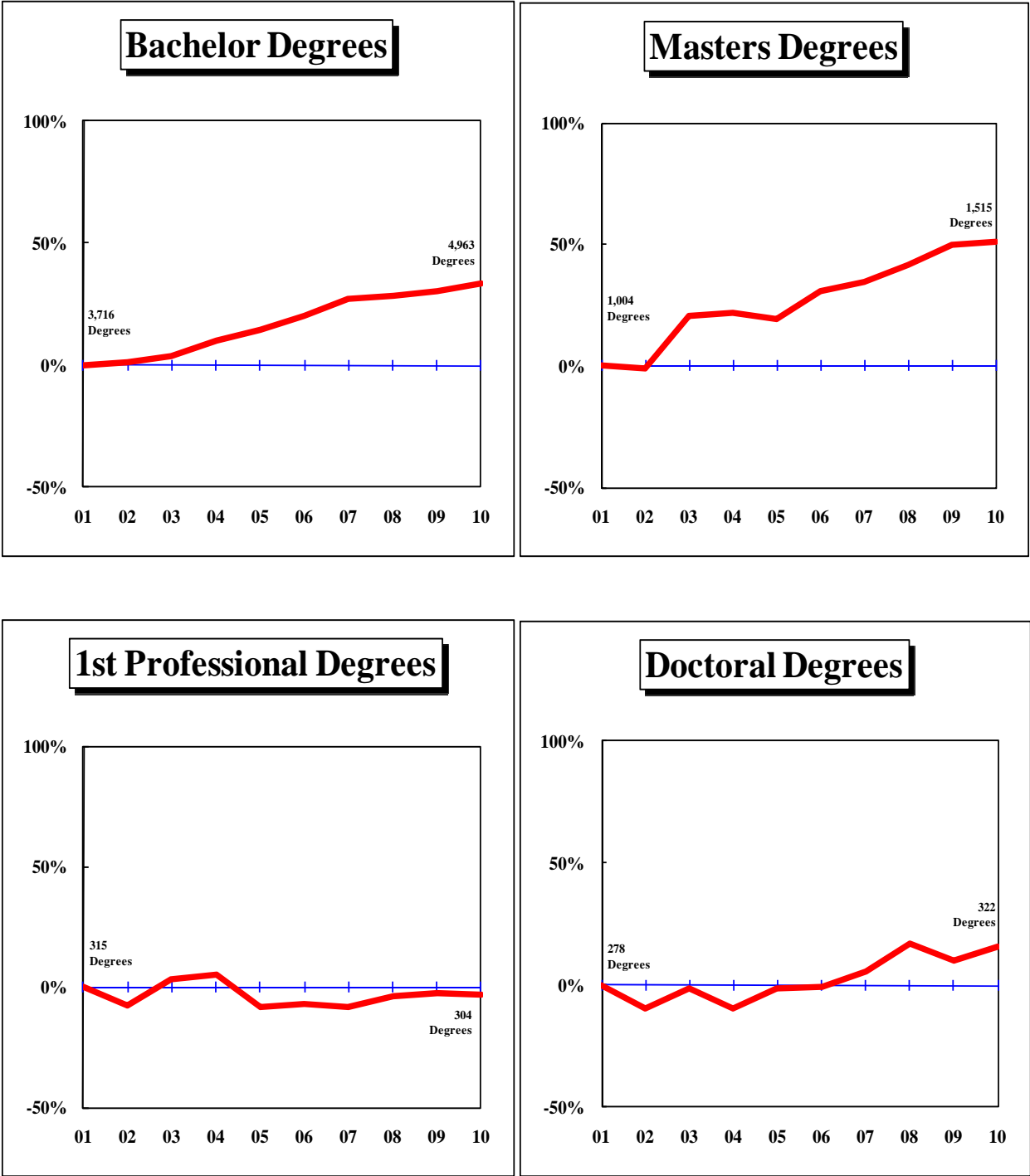


Figure 2: Rate of Change in Total Degrees Awarded by Campus, since 2001  
 - Continued

UNIVERSITY OF MISSOURI - KANSAS CITY

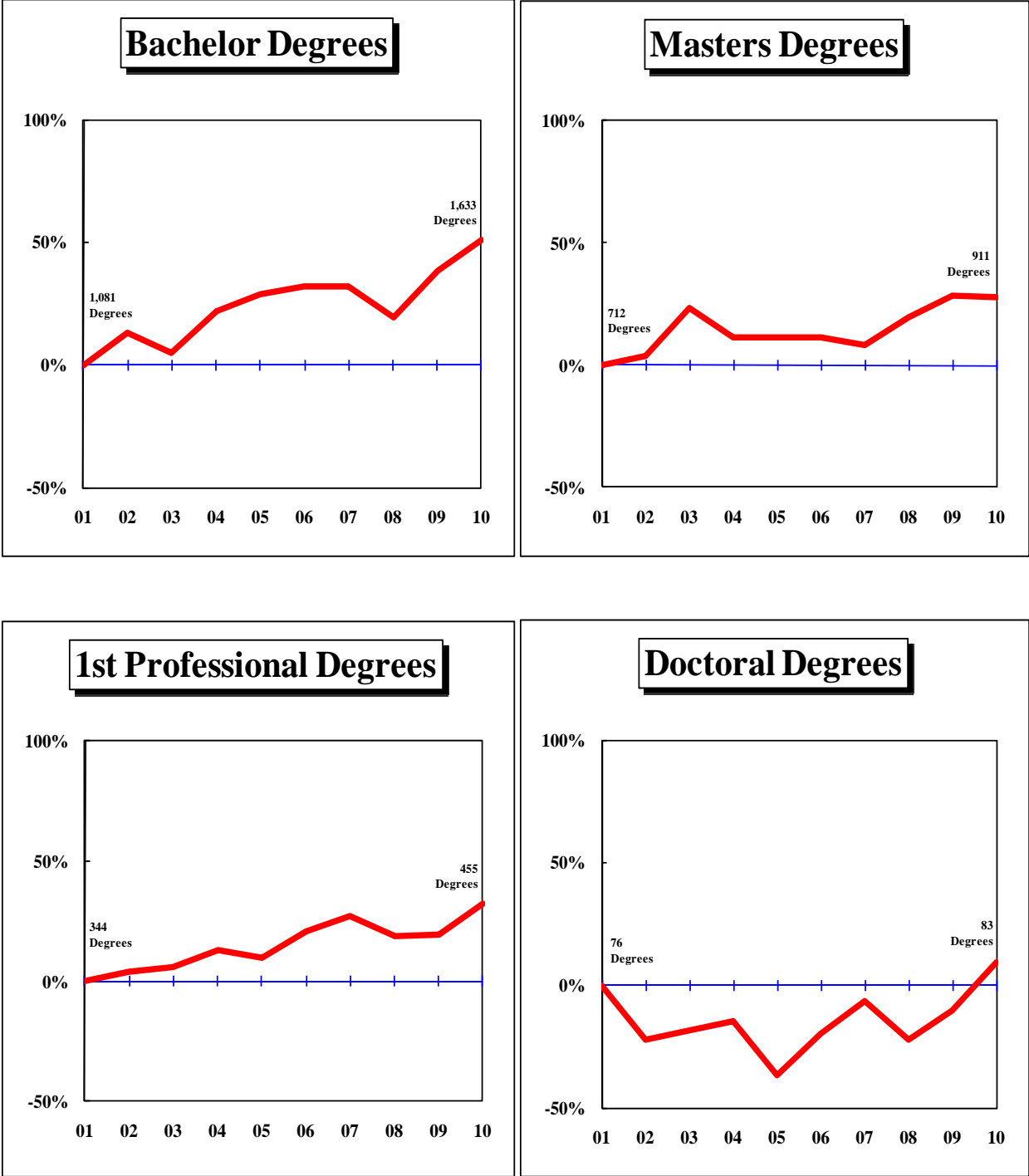




Figure 2: Rate of Change in Total Degrees Awarded by Campus, since 2001  
 - Continued

MISSOURI UNIVERSITY OF SCIENCE AND TECHNOLOGY

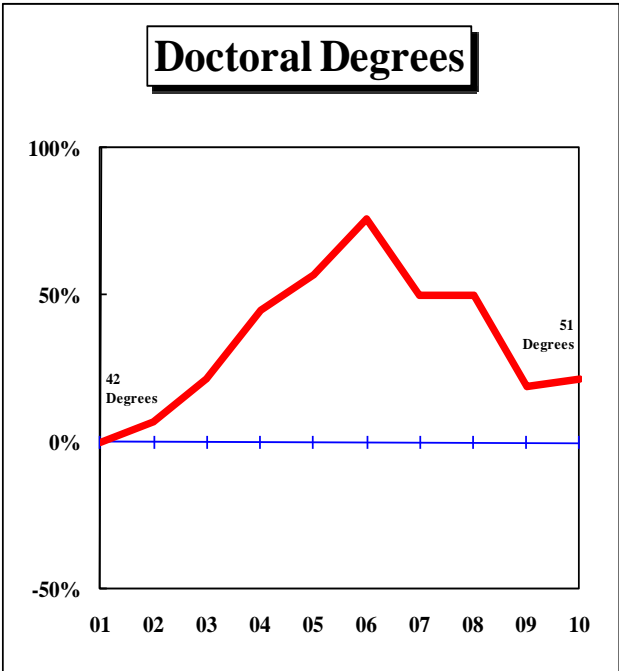
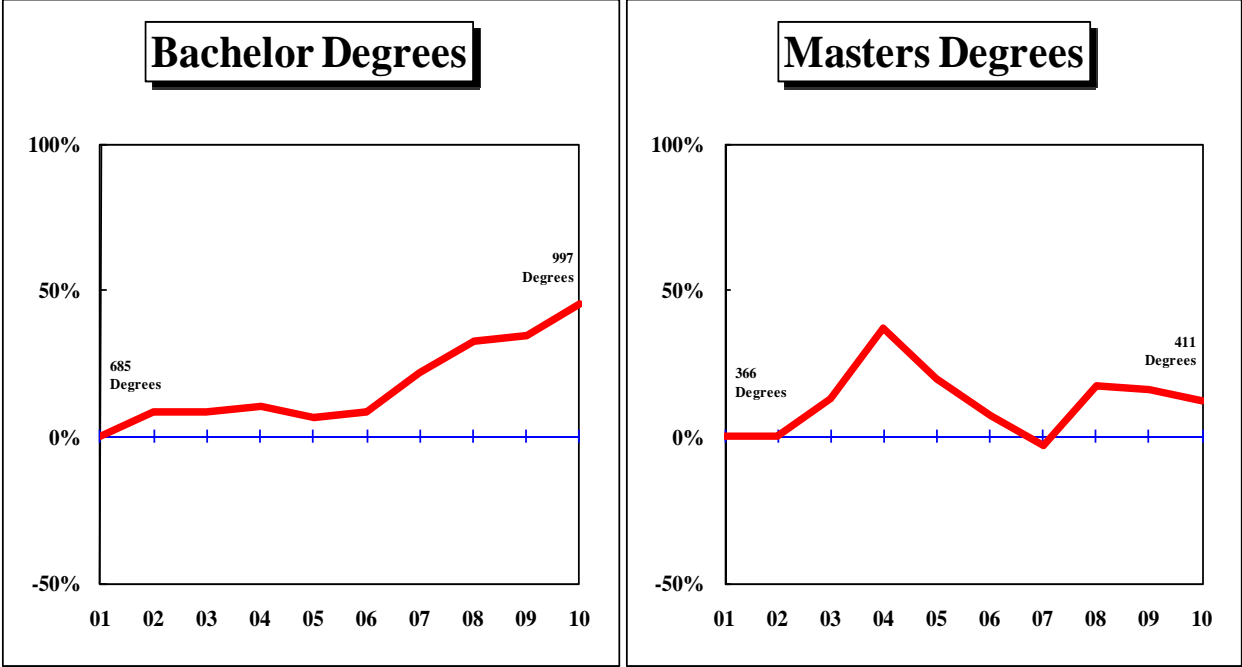


Figure 2: Rate of Change in Total Degrees Awarded by Campus, since 2001  
 - Continued

UNIVERSITY OF MISSOURI – ST. LOUIS

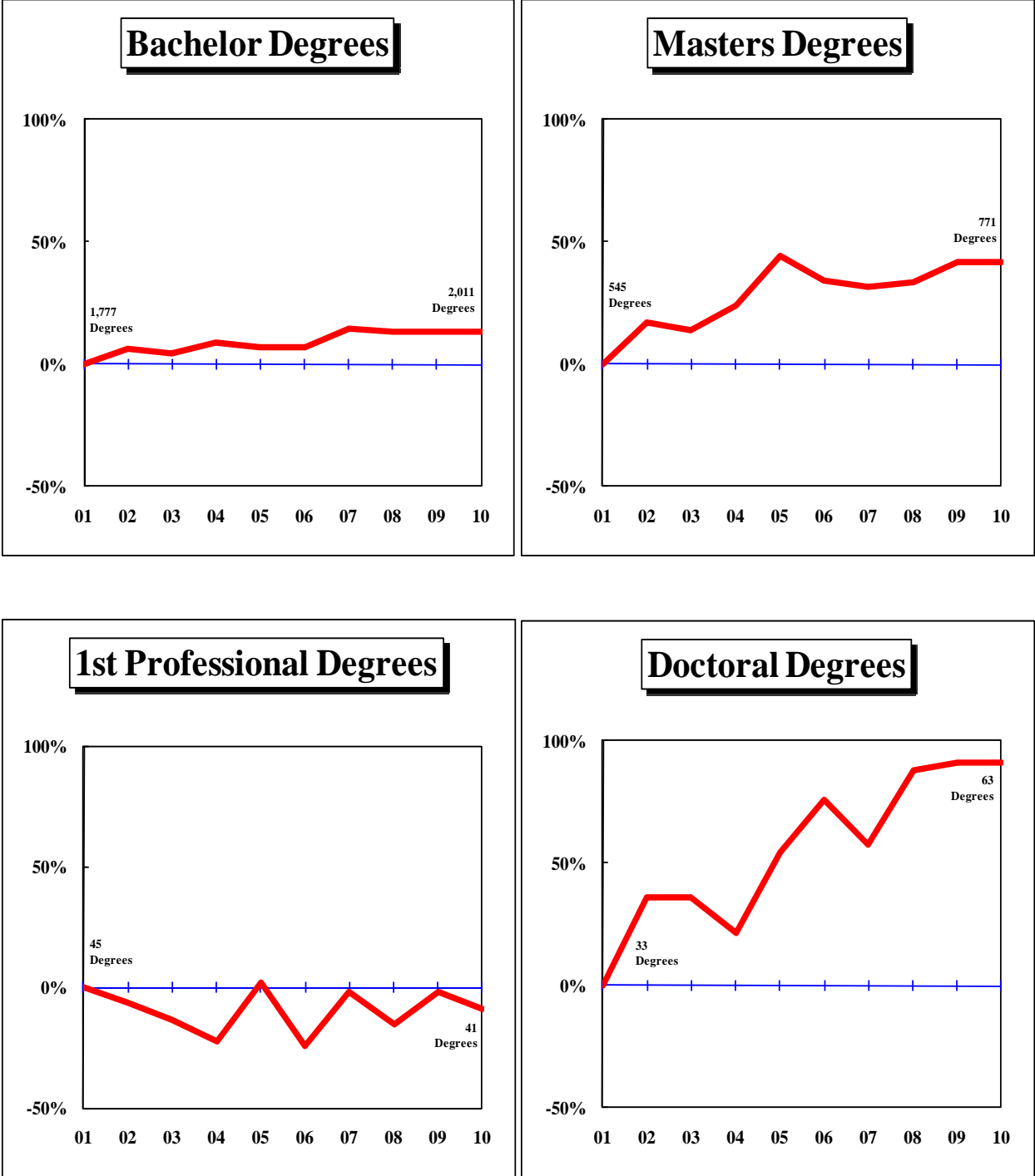


Figure 2: Rate of Change in Total Degrees Awarded by Campus, since 2001  
 - Continued

UNIVERSITY OF MISSOURI SYSTEM

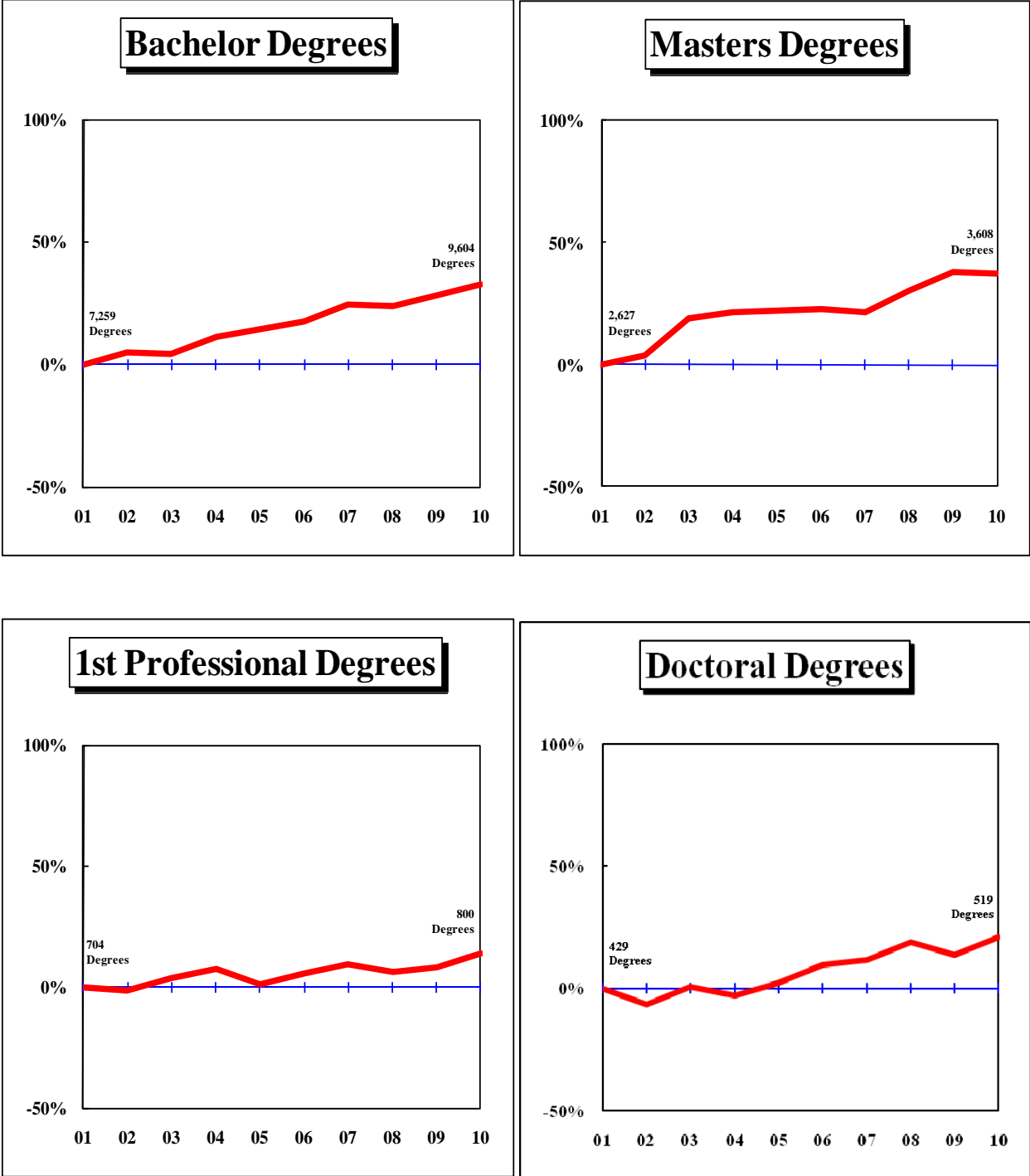


Table 1. Degrees Awarded at the University Of Missouri, July 1, 2000 through June 30, 2010

DEGREE	FY 2001	FY 2002	FY 2003	FY 2004	FY 2005	FY 2006	FY 2007	FY 2008	FY 2009	FY 2010	3-Year	Average 5-Year	10-Year	Change in FY10 relative to the 10-Year Avg.	
<b>UNIVERSITY OF MISSOURI - COLUMBIA</b>															
Bachelors	3,716	3,761	3,848	4,086	4,259	4,461	4,736	4,779	4,855	4,963	4,865.7	4,758.8	4,346.4	14%	
Graduate Certificate		36	93	69	79	84	68	69	88	142	99.7	90.2	N/A		
First Professional	315	291	325	331	288	292	289	303	307	304	304.7	299.0	304.5	0%	
Masters	1,004	991	1,209	1,222	1,195	1,314	1,350	1,421	1,506	1,515	1,480.7	1,421.2	1,272.7	19%	
Education Specialist	36	33	41	23	33	21	36	34	57	59	50.0	41.4	37.3	58%	
Doctorate	278	252	274	251	274	277	293	326	306	322	318.0	304.8	285.3	13%	
Total, All Degrees	5,349	5,364	5,790	5,982	6,128	6,449	6,772	6,932	7,119	7,305	7,118.7	6,915.4	6,319.0	16%	
<b>UNIVERSITY OF MISSOURI - KANSAS CITY</b>															
Bachelors	1,081	1,221	1,135	1,316	1,393	1,425	1,428	1,289	1,496	1,633	1,472.7	1,454.2	1,341.7	22%	
Graduate Certificate	19	8	22	9	19	23	19	24	20	18	20.7	20.8	18.1	-1%	
First Professional	344	359	364	390	377	415	438	408	412	455	425.0	425.6	396.2	15%	
Masters	712	741	877	795	794	791	769	852	917	911	893.3	848.0	815.9	12%	
Education Specialist	52	43	53	59	41	41	39	40	49	33	40.7	40.4	45.0	-27%	
Doctorate	76	59	62	65	48	61	71	59	68	83	70.0	68.4	65.2	27%	
Total, All Degrees	2,284	2,431	2,513	2,634	2,672	2,756	2,764	2,672	2,962	3,133	2,922.3	2,857.4	2,682.1	17%	
<b>MISSOURI UNIVERSITY OF SCIENCE AND TECHNOLOGY</b>															
Undergrad. Certificate								1	3	2	1	2.0	N/A	N/A	
Bachelors	685	742	743	756	731	744	834	910	920	997	942.3	881.0	806.2	24%	
Graduate Certificate		22	20	70	83	75	127	164	250	278	230.7	178.8	N/A		
Masters	366	366	414	502	440	392	356	430	426	411	422.3	403.0	410.3	0%	
Doctorate	42	45	51	61	66	74	63	63	50	51	54.7	60.2	56.6	-10%	
Total, All Degrees	1,093	1,175	1,228	1,389	1,320	1,285	1,381	1,570	1,648	1,738	1,652.0	1,524.4	1,382.7	26%	
<b>UNIVERSITY OF MISSOURI - ST. LOUIS</b>															
Bachelors	1,777	1,887	1,853	1,932	1,902	1,905	2,039	2,016	2,018	2,011	2,015.0	1,997.8	1,934.0	4%	
Graduate Certificate	56	64	87	54	76	77	79	64	80	82	75.3	76.4	71.9	14%	
First Professional	45	42	39	35	46	34	44	38	44	41	41.0	40.2	40.8	0%	
Masters	545	637	622	675	786	730	718	729	771	771	757.0	743.8	698.4	10%	
Education Specialist					3	29	31	28	42	31	33.7	32.2	N/A		
Doctorate	33	45	45	40	51	58	52	62	63	63	62.7	59.6	51.2	23%	
Total, All Degrees	2,456	2,675	2,646	2,736	2,864	2,833	2,963	2,937	3,018	2,999	2,984.7	2,950.0	2,812.7	7%	

Table 1. Degrees Awarded at the University Of Missouri, July 1, 2000 through June 30, 2010 (continued)

DEGREE	FY 2001	FY 2002	FY 2003	FY 2004	FY 2005	FY 2006	FY 2007	FY 2008	FY 2009	FY 2010	3-Year	Average 5-Year	10-Year	Change in FY10 relative to the 10-Year Avg.
<b>UNIVERSITY OF MISSOURI SYSTEM</b>														
Undergrad. Certificate							1	3	2	1	2.0	N/A	N/A	
Bachelors	7,259	7,611	7,579	8,090	8,285	8,535	9,037	8,994	9,289	9,604	9,295.7	9,091.8	8,428.3	14%
Graduate Certificate	75	130	222	202	257	259	293	321	438	520	426.3	366.2	271.7	91%
First Professional	704	692	728	756	711	741	771	749	763	800	770.7	764.8	741.5	8%
Masters	2,627	2,735	3,122	3,194	3,215	3,227	3,193	3,432	3,620	3,608	3,553.3	3,416.0	3,197.3	13%
Education Specialist	88	76	94	82	77	91	106	102	148	123	124.3	114.0	98.7	25%
Doctorate	429	401	432	417	439	470	479	510	487	519	505.3	493.0	458.3	13%
Total, All Degrees	11,182	11,645	12,177	12,741	12,984	13,323	13,880	14,111	14,747	15,175	14,677.7	14,247.2	13,196.5	15%

IR&P/RS 8/10

Table 2.1: Degrees Awarded by Colleges at the University of Missouri – Columbia

COLLEGE/DEGREE	FY 2001	FY 2002	FY 2003	FY 2004	FY 2005	FY 2006	FY 2007	FY 2008	FY 2009	FY 2010	3-Year	Average 5-Year	10-Year	Change in FY10 relative to the 10-Year Avg.
<b>AGRICULTURE, FOOD, AND NATURAL RESOURCES, COLLEGE OF</b>														
Bachelors	369	317	339	335	306	356	344	367	391	383	380.3	368.2	350.7	9%
Masters	42	44	37	43	37	43	55	46	51	38	45.0	46.6	43.6	-13%
Doctorate	24	28	32	27	24	31	26	26	32	28	28.7	28.6	27.8	1%
All	435	389	408	405	367	430	425	439	474	449	454.0	443.4	422.1	6%
<b>ARTS AND SCIENCE, COLLEGE OF</b>														
Bachelors	1,310	1,405	1,490	1,578	1,549	1,633	1,775	1,725	1,741	1,744	1,736.7	1,723.6	1,595.0	9%
Masters	110	118	143	130	136	159	161	158	176	144	159.3	159.6	143.5	0%
Doctorate	100	82	92	94	101	100	87	108	97	104	103.0	99.2	96.5	8%
All	1,520	1,605	1,725	1,802	1,786	1,892	2,023	1,991	2,014	1,992	1,999.0	1,982.4	1,835.0	9%
<b>BUSINESS, COLLEGE OF</b>														
Bachelors	497	540	529	632	711	777	792	807	779	900	828.7	811.0	696.4	29%
Grad. Certif.		36	60	68	56	51	50	30	9	15	18.0	31.0	41.7	
Masters	139	152	153	191	174	197	213	214	204	237	218.3	213.0	187.4	26%
Doctorate	4	10	5	8	8	6	14	6	6	4	5.3	7.2	7.1	-44%
All	640	738	747	899	949	1,031	1,069	1,057	998	1,156	1,070.3	1,062.2	928.4	25%
<b>EDUCATION, COLLEGE OF</b>														
Bachelors	228	219	204	219	234	283	269	249	246	239	244.7	257.2	239.0	0%
Masters	267	297	412	412	360	438	440	450	485	502	479.0	463.0	406.3	24%
Ed. Specialist	36	33	41	23	33	21	36	34	57	59	50.0	41.4	37.3	58%
Doctorate	76	69	70	70	73	62	84	87	87	74	82.7	78.8	75.2	-2%
All	607	618	727	724	700	804	829	820	875	874	856.3	840.4	757.8	15%
<b>ENGINEERING, COLLEGE OF</b>														
Bachelors	354	328	322	359	378	343	383	368	386	398	384.0	375.6	361.9	10%
Masters	84	79	103	97	87	107	60	93	90	78	87.0	85.6	87.8	-11%
Doctorate	15	16	30	16	24	33	39	36	24	24	28.0	31.2	25.7	-7%
All	453	423	455	472	489	483	482	497	500	500	499.0	492.4	475.4	5%
<b>HEALTH PROFESSIONS, SCHOOL OF</b>														
Bachelors	129	117	99	96	122	113	138	153	155	176	161.3	147.0	129.8	36%
Masters	60	60	50	39	62	67	56	96	82	48	75.3	69.8	62.0	-23%
Doctorate	1	1	0	0	0	0	0	0	0	36	12.0	7.2	3.8	847%
All	190	178	149	135	184	180	194	249	237	260	248.7	224.0	195.6	33%

Table 2.1: Degrees Awarded by Colleges at the University of Missouri – Columbia (continued)

COLLEGE/DEGREE	FY	FY	FY	FY	FY	FY	FY	FY	FY	FY	3-Year	Average		Change in FY10 relative to the 10-Year Avg.
	2001	2002	2003	2004	2005	2006	2007	2008	2009	2010		5-Year	10-Year	
<b>HUMAN ENVIRONMENTAL SCIENCES, COLLEGE OF</b>														
Bachelors	284	237	228	233	262	250	234	278	298	274	283.3	266.8	257.8	6%
Grad. Certif.						1	0	0	0	0	0.0	0.2	N/A	
Masters	16	28	16	15	35	24	15	18	35	17	23.3	21.8	21.9	-22%
Doctorate	11	6	11	6	3	4	7	5	9	8	7.3	6.6	7.0	14%
All	311	271	255	254	300	279	256	301	342	299	314.0	295.4	286.8	4%
<b>JOURNALISM, SCHOOL OF</b>														
Bachelors	287	320	337	364	404	412	426	475	520	521	505.3	470.8	406.6	28%
Masters	62	61	75	64	94	70	69	91	107	112	103.3	89.8	80.5	39%
Doctorate	6	8	8	8	10	14	5	10	9	8	9.0	9.2	8.6	-7%
All	355	389	420	436	508	496	500	576	636	641	617.7	569.8	495.7	29%
<b>LAW, SCHOOL OF</b>														
Grad. Certif.		0	33	0	1	18	0	21	16	37	24.7	18.4	N/A	
First Profes.	157	139	172	175	138	139	143	148	152	141	147.0	144.6	150.4	-6%
Masters	4	13	7	12	10	7	13	15	13	7	11.7	11.0	10.1	-31%
All	161	152	212	187	149	164	156	184	181	185	183.3	174.0	173.1	7%
<b>MEDICINE, SCHOOL OF</b>														
First Profes.	96	92	90	92	89	89	87	89	85	99	91.0	89.8	90.8	9%
Masters	34	27	29	22	27	29	25	32	36	41	36.3	32.6	30.2	36%
Doctorate	20	6	10	5	7	5	8	14	10	11	11.7	9.6	9.6	15%
All	150	125	129	119	123	123	120	135	131	151	139.0	132.0	130.6	16%
<b>NATURAL RESOURCES, SCHOOL OF</b>														
Bachelors	83	106	122	104	109	99	131	113	115	96	108.0	110.8	107.8	-11%
Masters	16	14	16	17	27	21	26	18	20	21	19.7	21.2	19.6	7%
Doctorate	7	6	2	6	9	7	9	10	7	5	7.3	7.6	6.8	-26%
All	106	126	140	127	145	127	166	141	142	122	135.0	139.6	134.2	-9%
<b>NURSING, SCHOOL OF</b>														
Bachelors	145	145	143	134	156	166	201	187	190	190	189.0	186.8	165.7	15%
Masters	34	25	27	26	36	28	33	40	50	60	50.0	42.2	35.9	67%
Doctorate	1	9	4	3	2	4	3	4	5	3	4.0	3.8	3.8	-21%
All	180	179	174	163	194	198	237	231	245	253	243.0	232.8	205.4	23%

Table 2.1: Degrees Awarded by Colleges at the University of Missouri – Columbia (continued)

COLLEGE/DEGREE	FY 2001	FY 2002	FY 2003	FY 2004	FY 2005	FY 2006	FY 2007	FY 2008	FY 2009	FY 2010	3-Year	Average 5-Year	10-Year	Change in FY10 relative to the 10-Year Avg.
<b>SOCIAL WORK, SCHOOL OF</b>														
Bachelors	30	27	35	32	28	29	43	57	34	42	44.3	41.0	35.7	18%
Masters	98	56	108	103	48	65	112	58	64	129	83.7	85.6	84.1	53%
Doctorate	0	0	0	0	1	0	1	4	9	4	5.7	3.6	1.9	
All	128	83	143	135	77	94	156	119	107	175	133.7	130.2	121.7	44%
<b>VETERINARY MEDICINE, COLLEGE OF</b>														
First Profes.	62	60	63	64	61	64	59	66	70	64	66.7	64.6	63.3	1%
Masters	4	3	7	9	7	4	11	11	8	7	8.7	8.2	7.1	-1%
Doctorate	2	1	1	0	2	1	4	2	2	1	1.7	2.0	1.6	-38%
All	68	64	71	73	70	69	74	79	80	72	77.0	74.8	72.0	0%
<b>GRADUATE SCHOOL</b>														
Grad. Certif.		0	0	1	22	14	18	18	63	90	57.0	40.6	N/A	
Masters	34	14	26	42	55	55	61	81	85	74	80.0	71.2	52.7	40%
Doctorate	11	10	9	8	10	10	6	14	9	12	11.7	10.2	9.9	21%
All	45	24	35	51	87	79	85	113	157	176	148.7	122.0	85.2	107%

IR&P/RS 8/10



Table 2.2: Degrees Awarded by Colleges at the University of Missouri - Kansas City

COLLEGE/DEGREE	FY 2001	FY 2002	FY 2003	FY 2004	FY 2005	FY 2006	FY 2007	FY 2008	FY 2009	FY 2010	3-Year	<u>Average</u> 5-Year	10-Year	Change in FY10 relative to the 10-Year Avg.
<b>ARTS AND SCIENCES, COLLEGE OF</b>														
Bachelors	660	703	684	755	795	805	778	713	829	931	824.3	811.2	765.3	22%
Masters	147	135	152	145	150	189	161	198	187	173	186.0	181.6	163.7	6%
Doctorate	1	1	3	1	0	4	4	2	4	4	3.3	3.6	2.4	67%
All	808	839	839	901	945	998	943	913	1,020	1,108	1,013.7	996.4	931.4	19%
<b>BIOLOGICAL SCIENCES, SCHOOL OF</b>														
Bachelors	74	60	56	49	57	64	74	58	61	84	67.7	68.2	63.7	32%
Masters	13	17	14	13	21	16	19	18	20	23	20.3	19.2	17.4	32%
All	87	77	70	62	78	80	93	76	81	107	88.0	87.4	81.1	32%
<b>BUSINESS AND PUBLIC ADMINISTRATION, SCHOOL OF</b>														
Bachelors	148	162	123	147	180	189	194	178	195	192	188.3	189.6	170.8	12%
Masters	252	219	232	222	213	181	213	228	240	254	240.7	223.2	225.4	13%
All	400	381	355	369	393	370	407	406	435	446	429.0	412.8	396.2	13%
<b>COMPUTING AND ENGINEERING, SCHOOL OF</b>														
Bachelors	7	127	96	146	109	93	89	80	86	95	87.0	88.6	92.8	2%
Masters		51	59	74	85	75	89	112	144	135	130.3	111.0	82.4	64%
All	7	178	155	220	194	168	178	192	230	230	217.3	199.6	175.2	31%
<b>DENTISTRY, SCHOOL OF</b>														
Bachelors	29	30	30	28	24	28	31	28	27	31	28.7	29.0	28.6	8%
Grad. Certif.	19	8	21	9	17	23	19	22	17	17	18.7	19.6	17.2	-1%
First Profes.	65	83	83	78	79	92	101	100	102	96	99.3	98.2	87.9	9%
Masters	4	4	2	6	2	0	3	4	9	7	6.7	4.6	4.1	71%
All	117	125	136	121	122	143	154	154	155	151	153.3	151.4	137.8	10%
<b>EDUCATION, SCHOOL OF</b>														
Bachelors	91	89	83	119	107	107	124	98	118	116	110.7	112.6	105.2	10%
Masters	191	188	280	223	200	196	156	147	184	152	161.0	167.0	191.7	-21%
Ed. Specialist	52	43	53	59	41	41	39	40	49	33	40.7	40.4	45.0	-27%
Doctorate	12	8	9	13	7	4	5	10	9	5	8.0	6.6	8.2	-39%
All	346	328	425	414	355	348	324	295	360	306	320.3	326.6	350.1	-13%

Table 2.2: Degrees Awarded by Colleges at the University of Missouri - Kansas City (continued)

COLLEGE/DEGREE	FY 2001	FY 2002	FY 2003	FY 2004	FY 2005	FY 2006	FY 2007	FY 2008	FY 2009	FY 2010	3-Year	Average 5-Year	10-Year	Change in FY10 relative to the 10-Year Avg.
<b>GRADUATE STUDIES, SCHOOL OF</b>														
Grad. Certif.									1	0	N/A	N/A	N/A	
Doctorate	42	38	36	33	29	43	43	32	24	32	29.3	34.8	35.2	-9%
All	42	38	36	33	29	43	43	32	25	32	29.7	35.0	35.3	-9%
<b>LAW, SCHOOL OF</b>														
First Profes.	146	116	132	159	153	156	176	150	153	156	153.0	158.2	149.7	4%
Masters	9	18	29	22	15	21	19	22	32	32	28.7	25.2	21.9	46%
All	155	134	161	181	168	177	195	172	185	188	181.7	183.4	171.6	10%
<b>MEDICINE, SCHOOL OF</b>														
First Profes.	76	97	81	93	83	90	84	86	87	92	88.3	87.8	86.9	6%
Masters								0	0	4	1.3	N/A	N/A	
All	76	97	81	93	83	90	84	86	87	96	89.7	88.6	87.3	10%
<b>MUSIC AND DANCE, CONSERVATORY OF</b>														
Bachelors	52	33	49	52	55	57	52	49	70	70	63.0	59.6	53.9	30%
Grad. Certif.			1	0	2	0	0	2	2	1	1.7	1.0	N/A	
Masters	40	36	30	29	49	41	47	47	43	56	48.7	46.8	41.8	34%
Doctorate	20	9	12	17	9	9	14	12	21	20	17.7	15.2	14.3	40%
All	112	78	92	98	115	107	113	110	136	147	131.0	122.6	110.8	33%
<b>NURSING, SCHOOL OF</b>														
Bachelors	20	17	14	14	61	76	76	80	102	107	96.3	88.2	56.7	89%
Masters	55	67	69	58	58	69	59	75	57	74	68.7	66.8	64.1	15%
Doctorate	1	3	2	1	3	1	5	3	10	22	11.7	8.2	5.1	331%
All	76	87	85	73	122	146	140	158	169	203	176.7	163.2	125.9	61%
<b>PHARMACY, SCHOOL OF</b>														
Bachelors		0	0	6	5	6	10	5	8	7	6.7	7.2	5.2	34%
First Profes.	57	63	68	60	62	77	77	72	70	111	84.3	81.4	71.7	55%
Masters	1	6	10	3	1	3	3	1	1	1	1.0	1.8	3.0	-67%
All	58	69	78	69	68	86	90	78	79	119	92.0	90.4	79.4	50%

**Table 2.3: Degrees Awarded by Colleges at the Missouri University of Science and Technology**

This information is no longer provided since Missouri S&T eliminated schools and colleges in FY 2008.

Table 2.4: Degrees Awarded by Colleges at the University of Missouri - St. Louis

COLLEGE/DEGREE	FY 2001	FY 2002	FY 2003	FY 2004	FY 2005	FY 2006	FY 2007	FY 2008	FY 2009	FY 2010	3-Year	Average 5-Year	10-Year	Change in FY10 relative to the 10-Year Avg.
<b>ARTS AND SCIENCES, COLLEGE OF</b>														
Bachelors	747	724	632	644	640	674	759	734	749	767	750.0	736.6	707.0	8%
Grad. Certif.	14	14	19	18	25	26	34	18	30	35	27.7	28.6	23.3	50%
Masters	139	177	187	188	208	201	211	214	215	241	223.3	216.4	198.1	22%
Doctorate	21	26	20	23	27	30	30	24	34	35	31.0	30.6	27.0	30%
All	921	941	858	873	900	931	1,034	990	1,028	1,078	1,032.0	1,012.2	955.4	13%
<b>BUSINESS ADMINISTRATION, COLLEGE OF</b>														
Bachelors	499	547	566	612	532	542	579	598	573	545	572.0	567.4	559.3	-3%
Grad. Certif.	23	30	46	17	21	16	16	18	12	11	13.7	14.6	21.0	-48%
Masters	100	127	135	117	145	133	163	163	210	162	178.3	166.2	145.5	11%
Doctorate		0	0	0	0	0	1	1	0	2	1.0	0.8	N/A	
All	622	704	747	746	698	691	759	780	795	720	765.0	749.0	726.2	-1%
<b>EDUCATION, COLLEGE OF</b>														
Bachelors	322	306	271	289	276	247	260	230	271	229	243.3	247.4	270.1	-15%
Grad. Certif.				5	6	11	8	1	4	5	3.3	5.8	N/A	
Masters	245	227	239	267	333	302	252	255	262	287	268.0	271.6	266.9	8%
Ed. Specialist					3	29	31	28	42	31	33.7	32.2	N/A	
Doctorate	8	13	20	15	21	24	18	27	27	24	26.0	24.0	19.7	22%
All	575	546	530	576	639	613	569	541	606	576	574.3	581.0	577.1	0%
<b>FINE ARTS AND COMMUNICATION, COLLEGE OF</b>														
Bachelors		102	205	174	219	219	210	210	188	214	204.0	208.2	N/A	
Masters				1	7	16	19	26	14	22	20.7	19.4	N/A	
All		102	205	175	226	235	229	236	202	236	224.7	227.6	N/A	
<b>NURSING, COLLEGE OF</b>														
Bachelors	94	110	115	123	152	160	163	186	181	200	189.0	178.0	148.4	35%
Grad. Certif.								5	1	1	2.3	N/A	N/A	
Masters	30	88	34	64	60	46	48	51	43	41	45.0	45.8	50.5	-19%
Doctorate	4	5	4	1	1	4	2	9	2	2	4.3	3.8	3.4	-41%
All	128	203	153	188	213	210	213	251	227	244	240.7	229.0	203.0	20%

Table 2.4: Degrees Awarded by Colleges at the University of Missouri - St. Louis (continued)

COLLEGE/DEGREE	FY 2001	FY 2002	FY 2003	FY 2004	FY 2005	FY 2006	FY 2007	FY 2008	FY 2009	FY 2010	3-Year	Average 5-Year	10-Year	Change in FY10 relative to the 10-Year Avg.
<b>OPTOMETRY, COLLEGE OF</b>														
First Profes.	45	42	39	35	46	34	44	38	44	41	41.0	40.2	40.8	0%
Masters	0	0	2	1	0	0	0	0	1	2	1.0	0.6	0.6	233%
Doctorate	0	1	1	1	2	0	1	1	0	0	0.3	0.4	0.7	-100%
All	45	43	42	37	48	34	45	39	45	43	42.3	41.2	42.1	2%
<b>ENGINEERING PROGRAM</b>														
Bachelors	33	29	26	42	42	33	48	46	52	56	51.3	47.0	40.7	38%
<b>EVENING COLLEGE</b>														
Bachelors	82	69	38	48	41						N/A	N/A	N/A	
<b>GRADUATE SCHOOL</b>														
Bachelors						30	20	12	4	0	5.3	13.2	N/A	
Grad. Certif.	19	20	22	14	24	24	21	22	33	30	28.3	26.0	22.9	31%
Masters	31	18	25	37	33	32	25	20	26	16	20.7	23.8	26.3	-39%
All	50	38	47	51	57	86	66	54	63	46	54.3	63.0	55.8	-18%

IR&P/RS 8/10