

**The 2010-2011 Report of Degrees Awarded
by the University of Missouri**

Randy Sade
Assistant Research Analyst

Office of Institutional Research and Planning
University of Missouri System

October 2011

IR&P 2011, Report 1

<http://www.umsystem.edu/ums/fa/planning/>

The 2010-2011 Report of Degrees Awarded by the University of Missouri

Executive Summary

This report includes graphs and tables of degrees awarded by each campus since 2002. The first table provides a summary of degrees by level for each campus, while the second table series gives the number of awards by the colleges of each campus. The *Department Detail Summary* reflects the number of degrees awarded by academic department. These tables also show the average number of degrees over a 3, 5, & 10-year period and the percent change in FY 2011 that is relative to the 10-year average.

The highlights of the report include:

- The University of Missouri System awarded a record 15,587 degrees, a 14% growth in FY 2011 relative to the 10-year average. (Table 1)
- Relative to the 10-year average, the number of FY 2011 masters degrees for the University of Missouri System increased 17%, doctorates increased 18%, and graduate certificates increased 69%.
- Comparing FY 2011 degrees to the 10-year averages, the most notable increases are: bachelors degrees awarded are up 13% at UM-Columbia, and 19% at Missouri S&T; masters degrees are up 22% at Missouri S&T and 19% at UM-St. Louis; and doctorates are up 24% at UM-Columbia and 18% at UM-Kansas City.
- First Professional degrees at UM-Kansas City increased 15% when comparing FY 2011 to the 10-year average.

Notes Regarding Use of the Report:

- The official annual reporting period is from July 1 to June 30 of the following calendar year. For example, FY11 includes summer and fall graduates from 2010 and the spring graduates of 2011.
- Please note the axis scale range when considering graphs. It may change from campus to campus.
- Previous year's tables may differ because tables in the report have been changed from the use of running averages to 3-, 5-, and 10-year averages.
- This report includes a 10-year average as related to FY 2011.
- Source for this report is the printed Completions Report.

Technical Notes for Use with the Report:

Footnotes

- Footnotes are of the utmost importance in reading tables in the appendix.

Name Changes

- If a program name changes, the report history is changed to reflect the new name and is footnoted.
- If a degree name or description is changed, the report history is changed to the new description and is footnoted.
- If a department name changes, the report history is changed to the new description and NO footnotes are made.
- If a school or college changes, the report history is changed to the new description and NO footnotes are made.

Program Moves

- If a program moves to another department or school, the data are reported as is – that is, report history is not changed and the new data are reported in the new department. A new footnote is added, i.e., program is moving. Eventually – when there are no more degrees for the old department, the old department is hidden in the report.
- If a program moves to another school or college, the data are reported as is – that is, report history is not changed and the new data are reported in the new school or college. A footnote is added, i.e., program is moving. Eventually – when there are no more degrees for the old program, the former program is hidden in the report.

Figure 1: Rate of Change in Total Degrees Awarded by Campus, since 2002

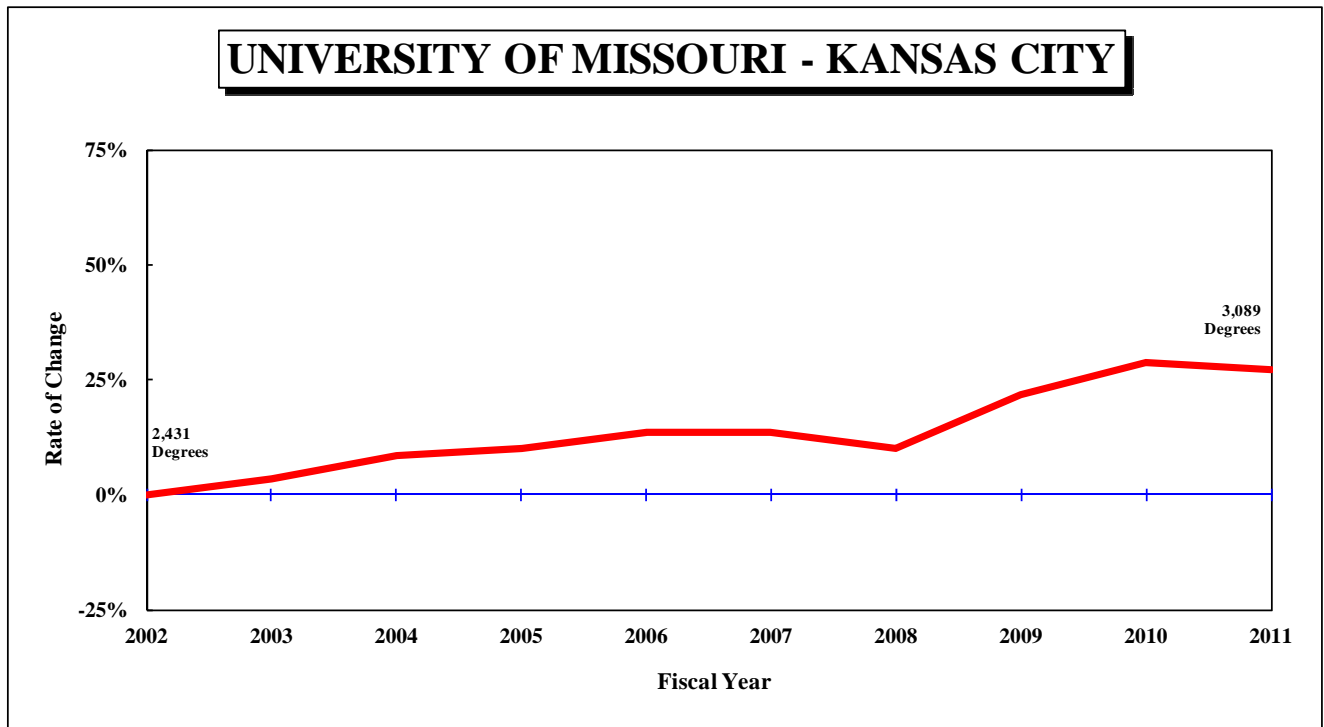
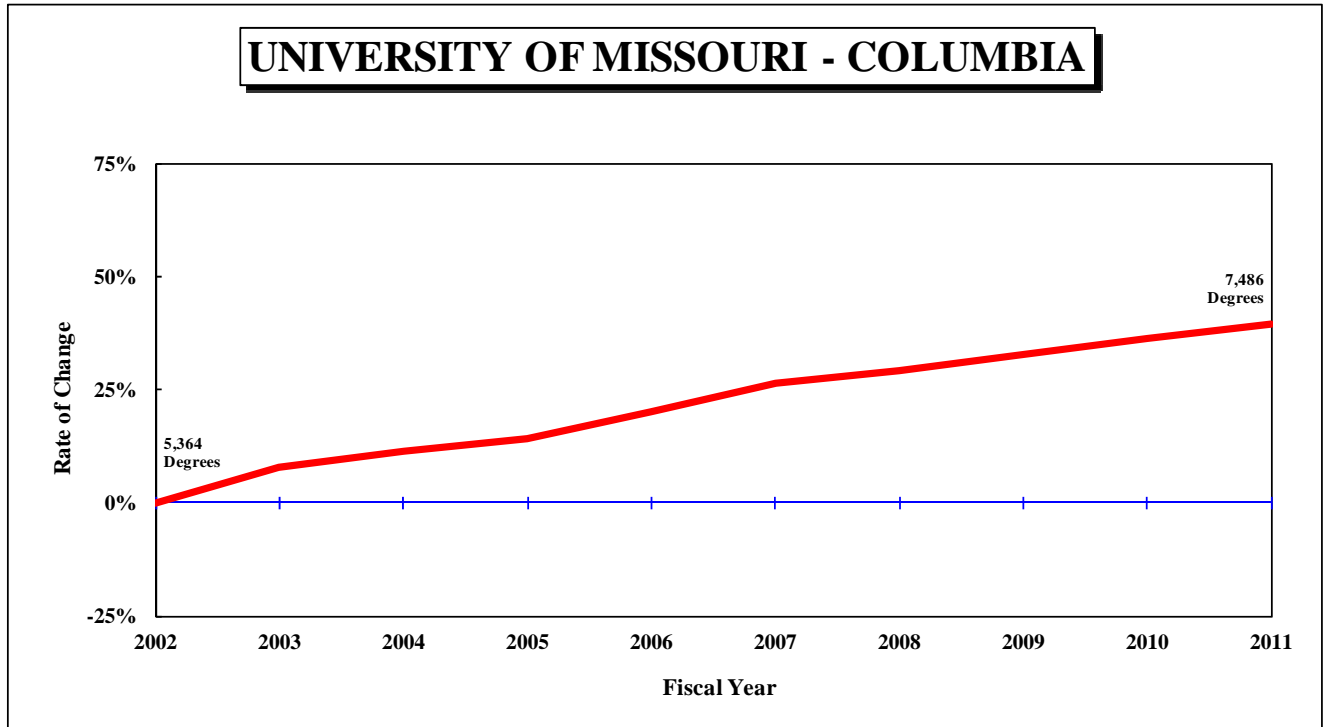


Figure 1: Rate of Change in Total Degrees Awarded by Campus, since 2002
 - Continued

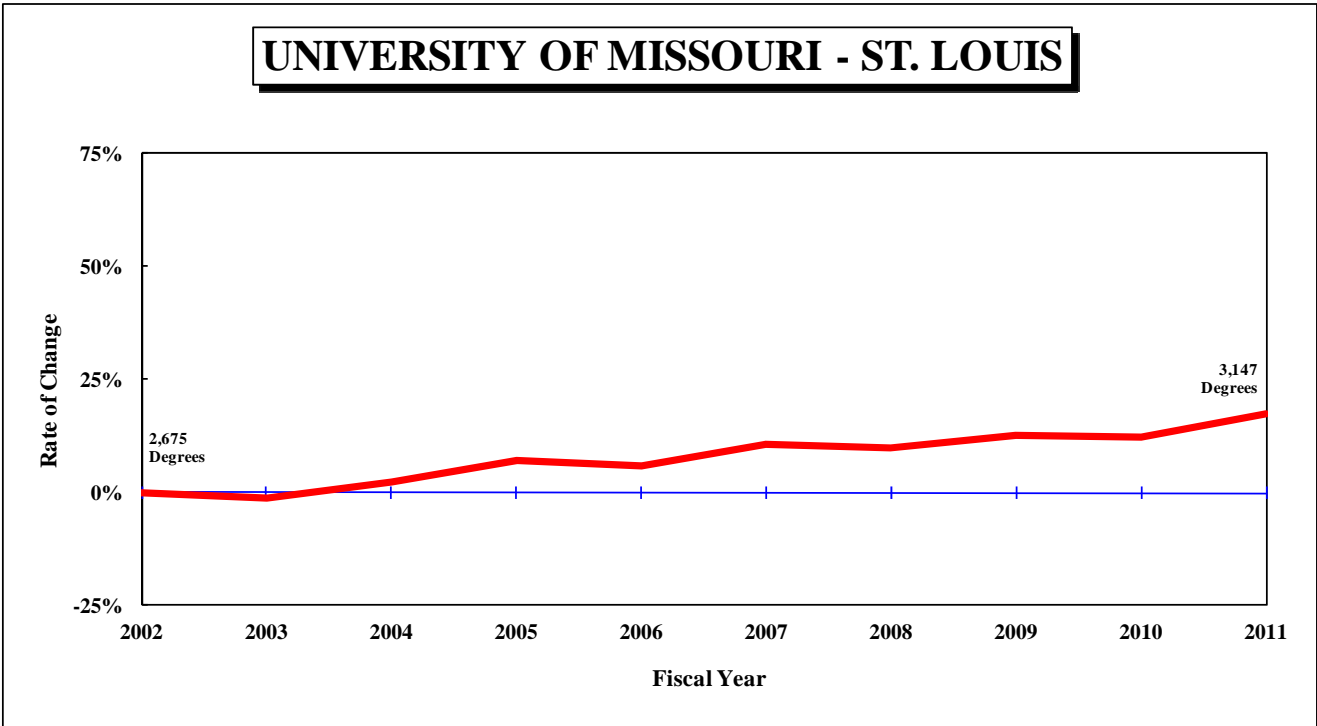
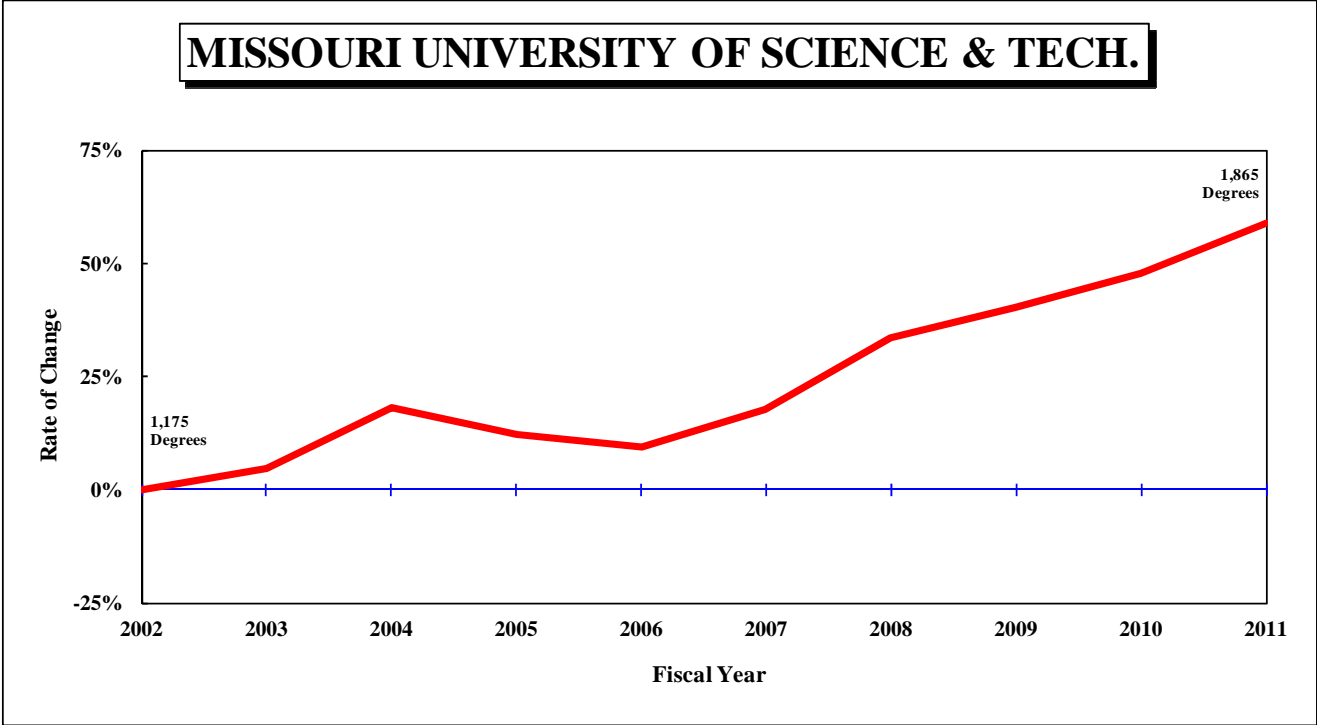


Figure 1: Rate of Change in Total Degrees Awarded by Campus, since 2002
Continued

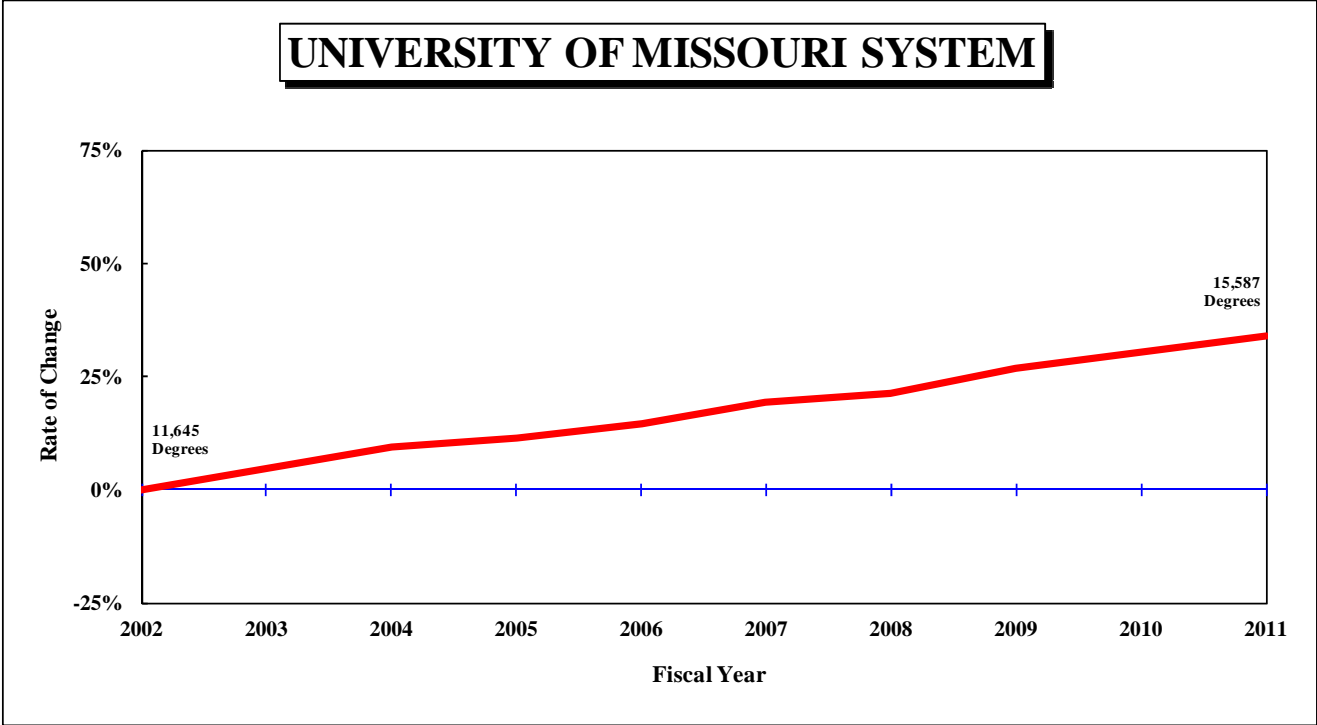


Figure 2: Rate of Change in Total Degrees Awarded by Campus, since 2002

UNIVERSITY OF MISSOURI - COLUMBIA

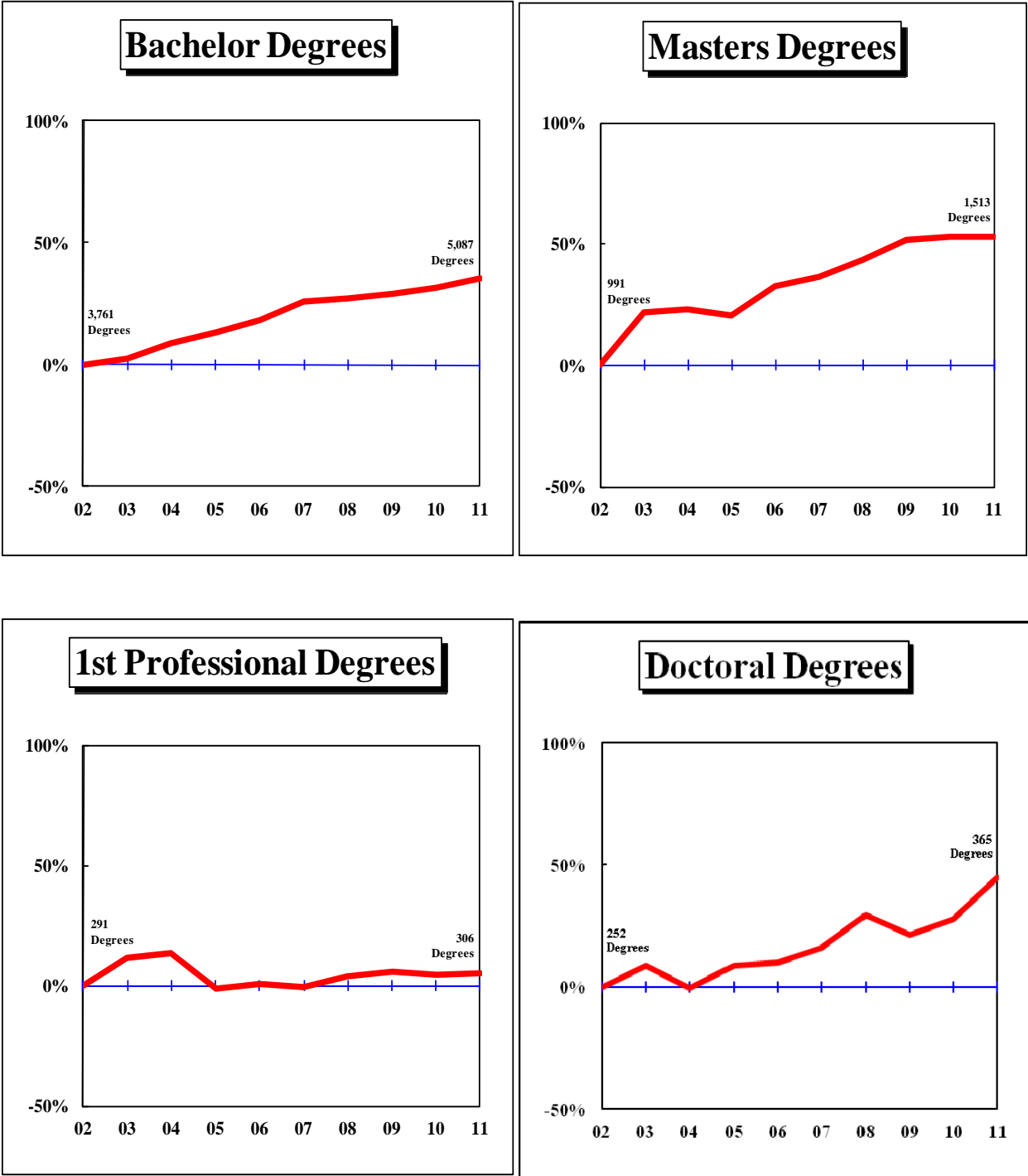


Figure 2: Rate of Change in Total Degrees Awarded by Campus, since 2002
 - Continued

UNIVERSITY OF MISSOURI - KANSAS CITY

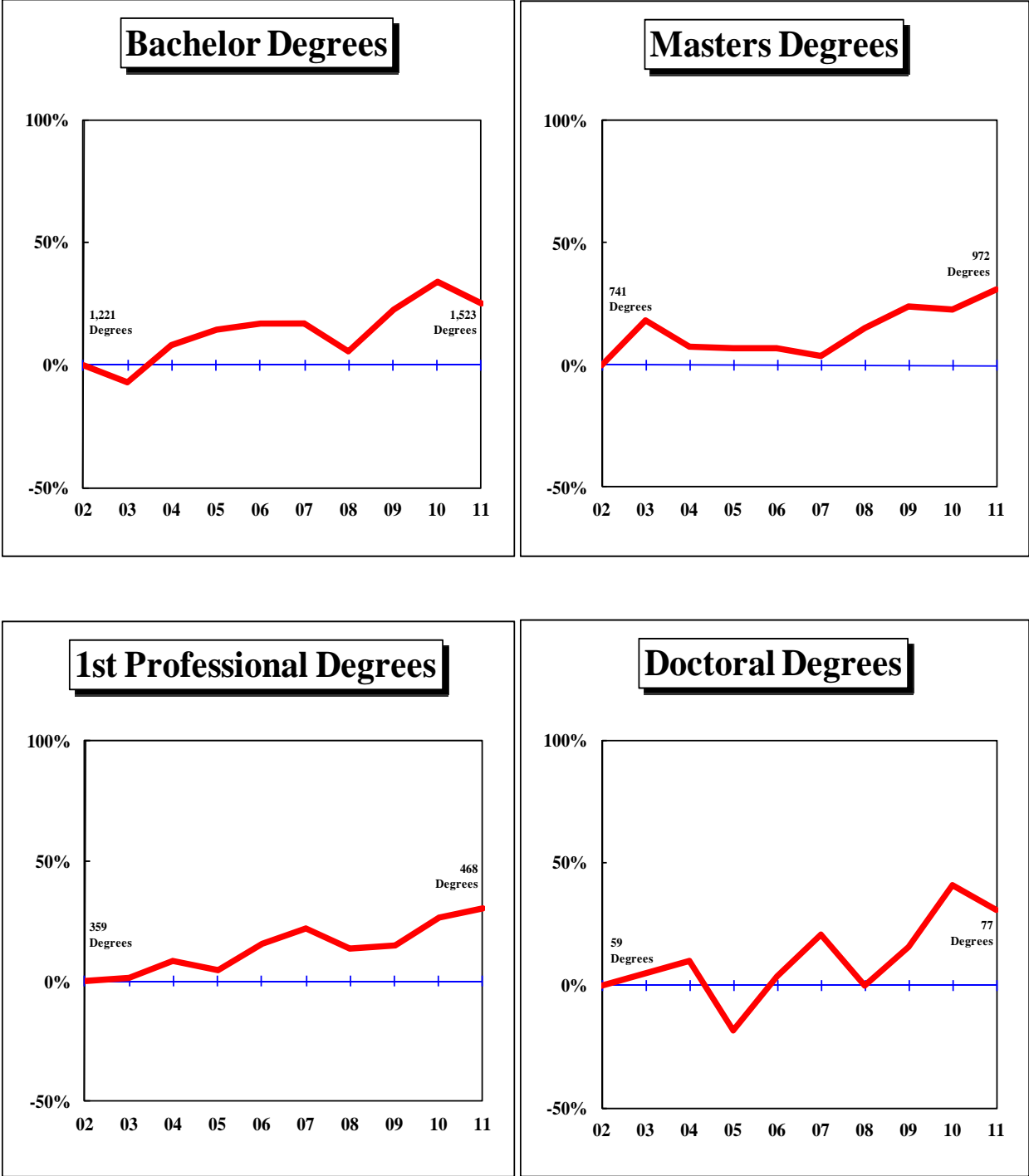


Figure 2: Rate of Change in Total Degrees Awarded by Campus, since 2002
 - Continued

MISSOURI UNIVERSITY OF SCIENCE AND TECHNOLOGY

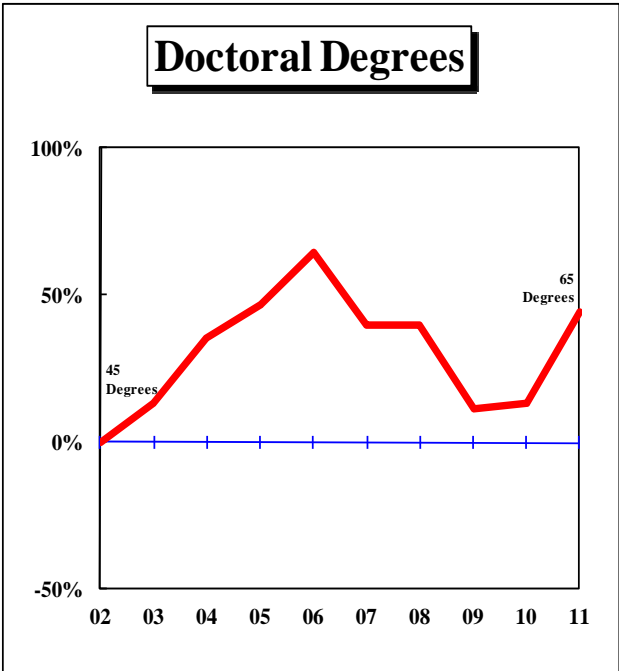
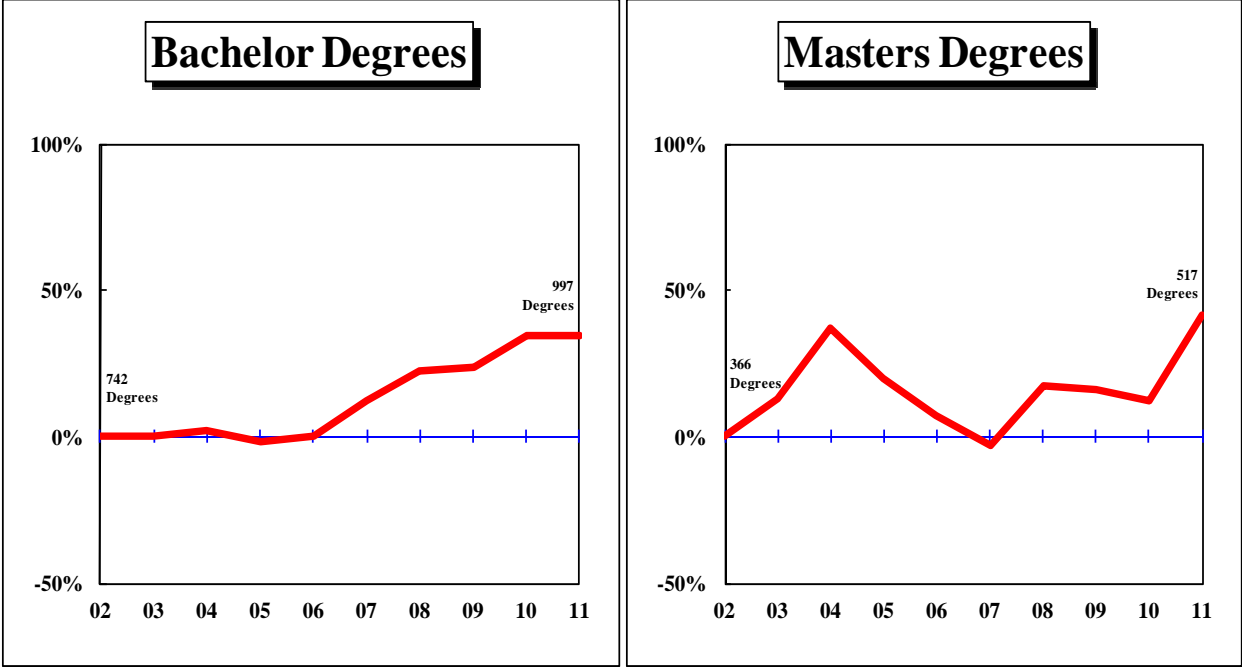


Figure 2: Rate of Change in Total Degrees Awarded by Campus, since 2002
 - Continued

UNIVERSITY OF MISSOURI – ST. LOUIS

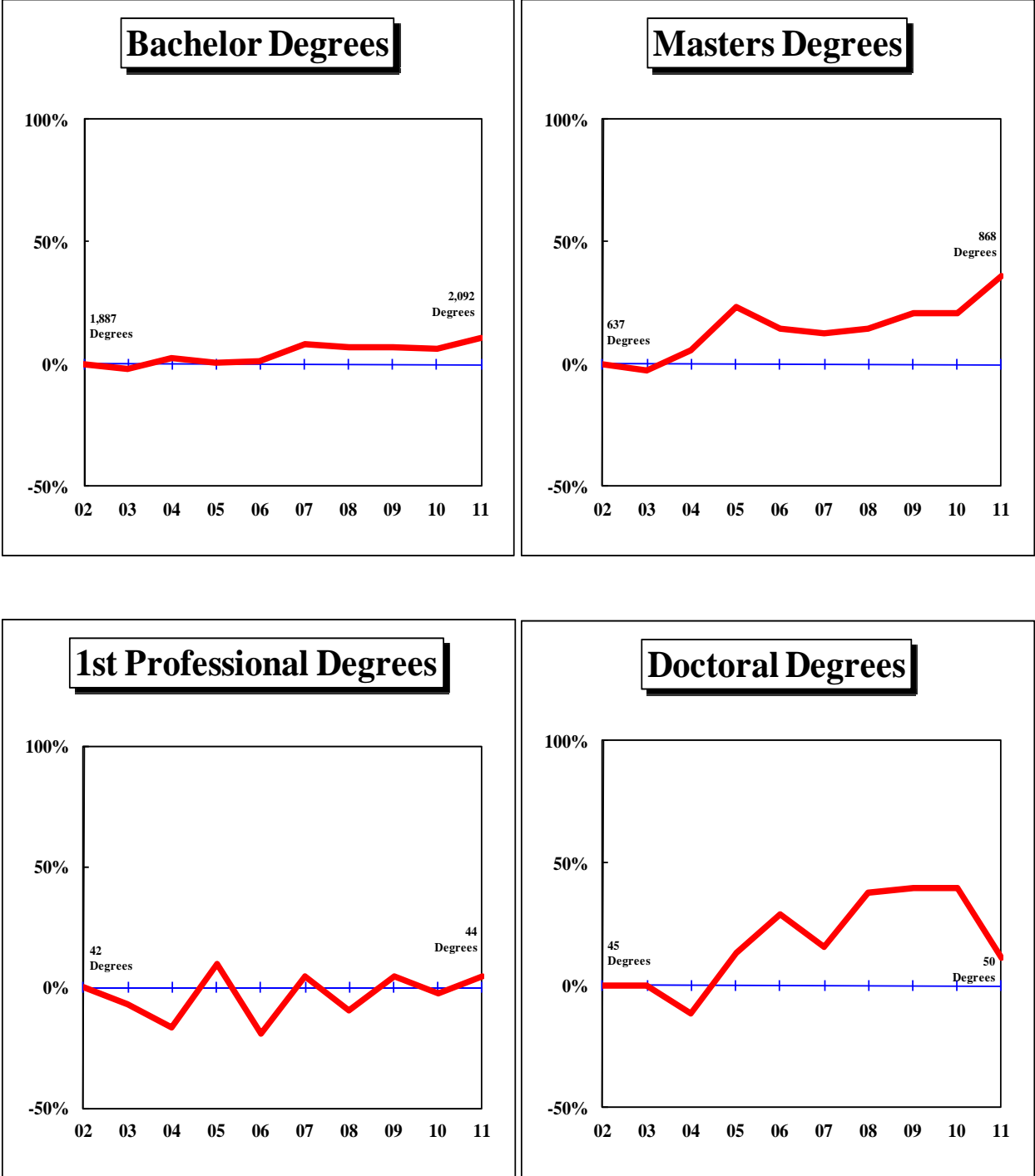


Figure 2: Rate of Change in Total Degrees Awarded by Campus, since 2002
 - Continued

UNIVERSITY OF MISSOURI SYSTEM

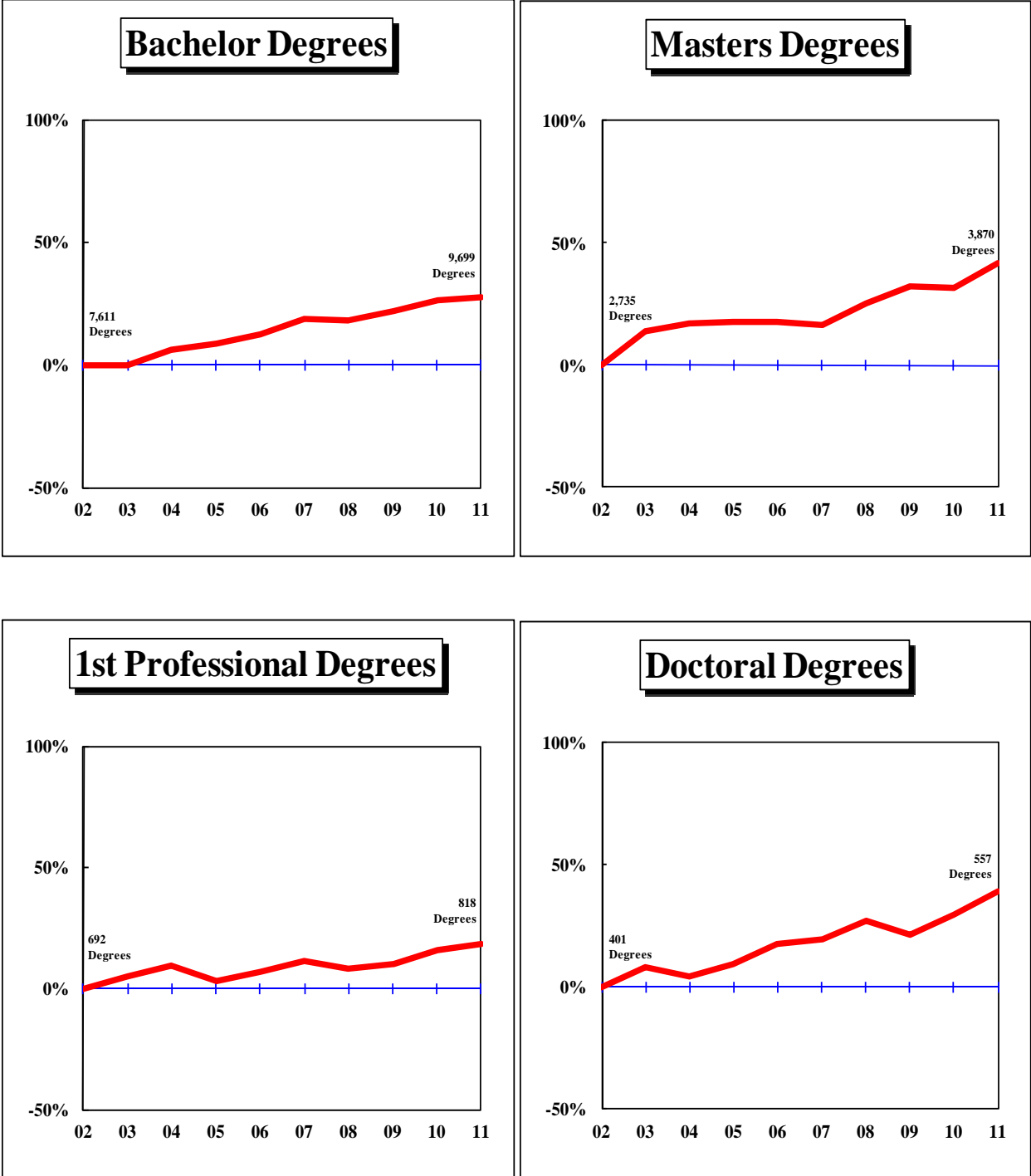


Table 1. Degrees Awarded at the University Of Missouri, July 1, 2001 through June 30, 2011

DEGREE	FY 2002	FY 2003	FY 2004	FY 2005	FY 2006	FY 2007	FY 2008	FY 2009	FY 2010	FY 2011	3-Year	Average 5-Year	10-Year	Change in FY11 relative to the 10-Year Avg.
UNIVERSITY OF MISSOURI - COLUMBIA														
Bachelors	3,761	3,848	4,086	4,259	4,461	4,736	4,779	4,855	4,963	5,087	4,968.3	4,884.0	4,483.5	13%
Graduate Certificate	36	93	69	79	84	68	69	88	142	162	130.7	105.8	89.0	82%
First Professional	291	325	331	288	292	289	303	307	304	306	305.7	301.8	303.6	1%
Masters	991	1,209	1,222	1,195	1,314	1,350	1,421	1,506	1,515	1,513	1,511.3	1,461.0	1,323.6	14%
Education Specialist	33	41	23	33	21	36	34	57	59	53	56.3	47.8	39.0	36%
Doctorate	252	274	251	274	277	293	326	306	322	365	331.0	322.4	294.0	24%
Total, All Degrees	5,364	5,790	5,982	6,128	6,449	6,772	6,932	7,119	7,305	7,486	7,303.3	7,122.8	6,532.7	15%
UNIVERSITY OF MISSOURI - KANSAS CITY														
Bachelors	1,221	1,135	1,316	1,393	1,425	1,428	1,289	1,496	1,633	1,523	1,550.7	1,473.8	1,385.9	10%
Graduate Certificate	8	22	9	19	23	19	24	20	18	24	20.7	21.0	18.6	29%
First Professional	359	364	390	377	415	438	408	412	455	468	445.0	436.2	408.6	15%
Masters	741	877	795	794	791	769	852	917	911	972	933.3	884.2	841.9	15%
Education Specialist	43	53	59	41	41	39	40	49	33	25	35.7	37.2	42.3	-41%
Doctorate	59	62	65	48	61	71	59	68	83	77	76.0	71.6	65.3	18%
Total, All Degrees	2,431	2,513	2,634	2,672	2,756	2,764	2,672	2,962	3,133	3,089	3,061.3	2,924.0	2,762.6	12%
MISSOURI UNIVERSITY OF SCIENCE AND TECHNOLOGY														
Undergrad. Certificate						1	3	2	1	4	2.3	N/A	N/A	
Bachelors	742	743	756	731	744	834	910	920	997	997	971.3	931.6	837.4	19%
Graduate Certificate	22	20	70	83	75	127	164	250	278	282	270.0	220.2	137.1	106%
Masters	366	414	502	440	392	356	430	426	411	517	451.3	428.0	425.4	22%
Doctorate	45	51	61	66	74	63	63	50	51	65	55.3	58.4	58.9	10%
Total, All Degrees	1,175	1,228	1,389	1,320	1,285	1,381	1,570	1,648	1,738	1,865	1,750.3	1,640.4	1,459.9	28%
UNIVERSITY OF MISSOURI - ST. LOUIS														
Bachelors	1,887	1,853	1,932	1,902	1,905	2,039	2,016	2,018	2,011	2,092	2,040.3	2,035.2	1,965.5	6%
Graduate Certificate	64	87	54	76	77	79	64	80	82	71	77.7	75.2	73.4	-3%
First Professional	42	39	35	46	34	44	38	44	41	44	43.0	42.2	40.7	8%
Masters	637	622	675	786	730	718	729	771	771	868	803.3	771.4	730.7	19%
Education Specialist				3	29	31	28	42	31	22	31.7	30.8	N/A	
Doctorate	45	45	40	51	58	52	62	63	63	50	58.7	58.0	52.9	-5%
Total, All Degrees	2,675	2,646	2,736	2,864	2,833	2,963	2,937	3,018	2,999	3,147	3,054.7	3,012.8	2,881.8	9%

Table 1. Degrees Awarded at the University Of Missouri, July 1, 2001 through June 30, 2011 (continued)

DEGREE	FY 2002	FY 2003	FY 2004	FY 2005	FY 2006	FY 2007	FY 2008	FY 2009	FY 2010	FY 2011	3-Year	Average 5-Year	10-Year	Change in FY11 relative to the 10-Year Avg.
UNIVERSITY OF MISSOURI SYSTEM														
Undergrad. Certificate						1	3	2	1	4	2.3	2.2	N/A	
Bachelors	7,611	7,579	8,090	8,285	8,535	9,037	8,994	9,289	9,604	9,699	9,530.7	9,324.6	8,672.3	12%
Graduate Certificate	130	222	202	257	259	293	321	438	520	539	499.0	422.2	318.1	69%
First Professional	692	728	756	711	741	771	749	763	800	818	793.7	780.2	752.9	9%
Masters	2,735	3,122	3,194	3,215	3,227	3,193	3,432	3,620	3,608	3,870	3,699.3	3,544.6	3,321.6	17%
Education Specialist	76	94	82	77	91	106	102	148	123	100	123.7	115.8	99.9	0%
Doctorate	401	432	417	439	470	479	510	487	519	557	521.0	510.4	471.1	18%
Total, All Degrees	11,645	12,177	12,741	12,984	13,323	13,880	14,111	14,747	15,175	15,587	15,169.7	14,700.0	13,637.0	14%

IR&P/RS 9/11

Table 2.1: Degrees Awarded by Colleges at the University of Missouri – Columbia

COLLEGE/DEGREE	FY 2002	FY 2003	FY 2004	FY 2005	FY 2006	FY 2007	FY 2008	FY 2009	FY 2010	FY 2011	3-Year	Average 5-Year	10-Year	Change in FY11 relative to the 10-Year Avg.
AGRICULTURE, FOOD, AND NATURAL RESOURCES, COLLEGE OF														
Bachelors	317	339	335	306	356	344	367	391	383	400	391.3	377.0	353.8	13%
Masters	44	37	43	37	43	55	46	51	38	45	44.7	47.0	43.9	3%
Doctorate	28	32	27	24	31	26	26	32	28	27	29.0	27.8	28.1	-4%
All	389	408	405	367	430	425	439	474	449	472	465.0	451.8	425.8	11%
ARTS AND SCIENCE, COLLEGE OF														
Bachelors	1,405	1,490	1,578	1,549	1,633	1,775	1,725	1,741	1,744	1,812	1,765.7	1,759.4	1,645.2	10%
Masters	118	143	130	136	159	161	158	176	144	176	165.3	163.0	150.1	17%
Doctorate	82	92	94	101	100	87	108	97	104	98	99.7	98.8	96.3	2%
All	1,605	1,725	1,802	1,786	1,892	2,023	1,991	2,014	1,992	2,086	2,030.7	2,021.2	1,891.6	10%
BUSINESS, COLLEGE OF														
Bachelors	540	529	632	711	777	792	807	779	900	838	839.0	823.2	730.5	15%
Grad. Certif.	36	60	68	56	51	50	30	9	15	27	17.0	26.2	40.2	-33%
Masters	152	153	191	174	197	213	214	204	237	220	220.3	217.6	195.5	13%
Doctorate	10	5	8	8	6	14	6	6	4	6	5.3	7.2	7.3	-18%
All	738	747	899	949	1,031	1,069	1,057	998	1,156	1,091	1,081.7	1,074.2	973.5	12%
EDUCATION, COLLEGE OF														
Bachelors	219	204	219	234	283	269	249	246	239	246	243.7	249.8	240.8	2%
Masters	297	412	412	360	438	440	450	485	502	495	494.0	474.4	429.1	15%
Ed. Specialist	33	41	23	33	21	36	34	57	59	53	56.3	47.8	39.0	36%
Doctorate	69	70	70	73	62	84	87	87	74	84	81.7	83.2	76.0	11%
All	618	727	724	700	804	829	820	875	874	878	875.7	855.2	784.9	12%
ENGINEERING, COLLEGE OF														
Bachelors	328	322	359	378	343	383	368	386	398	422	402.0	391.4	368.7	14%
Masters	79	103	97	87	107	60	93	90	78	109	92.3	86.0	90.3	21%
Doctorate	16	30	16	24	33	39	36	24	24	44	30.7	33.4	28.6	54%
All	423	455	472	489	483	482	497	500	500	575	525.0	510.8	487.6	18%
HEALTH PROFESSIONS, SCHOOL OF														
Bachelors	117	99	96	122	113	138	153	155	176	242	191.0	172.8	141.1	72%
Masters	60	50	39	62	67	56	96	82	48	40	56.7	64.4	60.0	-33%
Doctorate	1	0	0	0	0	0	0	0	36	43	26.3	15.8	8.0	438%
All	178	149	135	184	180	194	249	237	260	325	274.0	253.0	209.1	55%

Table 2.1: Degrees Awarded by Colleges at the University of Missouri – Columbia (continued)

COLLEGE/DEGREE	FY 2002	FY 2003	FY 2004	FY 2005	FY 2006	FY 2007	FY 2008	FY 2009	FY 2010	FY 2011	3-Year	Average		Change in FY11 relative to the 10-Year Avg.
												5-Year	10-Year	
HUMAN ENVIRONMENTAL SCIENCES, COLLEGE OF														
Bachelors	237	228	233	262	250	234	278	298	274	275	282.3	271.8	256.9	7%
Grad. Certif.					1	0	0	0	0	0	0.0	0.0	N/A	
Masters	28	16	15	35	24	15	18	35	17	30	27.3	23.0	23.3	29%
Doctorate	6	11	6	3	4	7	5	9	8	12	9.7	8.2	7.1	69%
All	271	255	254	300	279	256	301	342	299	317	319.3	303.0	287.4	10%
JOURNALISM, SCHOOL OF														
Bachelors	320	337	364	404	412	426	475	520	521	510	517.0	490.4	428.9	19%
Masters	61	75	64	94	70	69	91	107	112	88	102.3	93.4	83.1	6%
Doctorate	8	8	8	10	14	5	10	9	8	12	9.7	8.8	9.2	30%
All	389	420	436	508	496	500	576	636	641	610	629.0	592.6	521.2	17%
LAW, SCHOOL OF														
Grad. Certif.	0	33	0	1	18	0	21	16	37	39	30.7	22.6	16.5	136%
First Profes.	139	172	175	138	139	143	148	152	141	144	145.7	145.6	149.1	-3%
Masters	13	7	12	10	7	13	15	13	7	19	13.0	13.4	11.6	64%
All	152	212	187	149	164	156	184	181	185	202	189.3	181.6	177.2	14%
MEDICINE, SCHOOL OF														
First Profes.	92	90	92	89	89	87	89	85	99	93	92.3	90.6	90.5	3%
Masters	27	29	22	27	29	25	32	36	41	48	41.7	36.4	31.6	52%
Doctorate	6	10	5	7	5	8	14	10	11	7	9.3	10.0	8.3	-16%
All	125	129	119	123	123	120	135	131	151	148	143.3	137.0	130.4	13%
NATURAL RESOURCES, SCHOOL OF														
Bachelors	106	122	104	109	99	131	113	115	96	107	106.0	112.4	110.2	-3%
Masters	14	16	17	27	21	26	18	20	21	26	22.3	22.2	20.6	26%
Doctorate	6	2	6	9	7	9	10	7	5	7	6.3	7.6	6.8	3%
All	126	140	127	145	127	166	141	142	122	140	134.7	142.2	137.6	2%
NURSING, SCHOOL OF														
Bachelors	145	143	134	156	166	201	187	190	190	193	191.0	192.2	170.5	13%
Masters	25	27	26	36	28	33	40	50	60	43	51.0	45.2	36.8	17%
Doctorate	9	4	3	2	4	3	4	5	3	4	4.0	3.8	4.1	-2%
All	179	174	163	194	198	237	231	245	253	240	246.0	241.2	211.4	14%

Table 2.1: Degrees Awarded by Colleges at the University of Missouri – Columbia (continued)

COLLEGE/DEGREE	FY 2002	FY 2003	FY 2004	FY 2005	FY 2006	FY 2007	FY 2008	FY 2009	FY 2010	FY 2011	3-Year	Average 5-Year	10-Year	Change in FY11 relative to the 10-Year Avg.
SOCIAL WORK, SCHOOL OF														
Bachelors	27	35	32	28	29	43	57	34	42	42	39.3	43.6	36.9	14%
Masters	56	108	103	48	65	112	58	64	129	51	81.3	82.8	79.4	-36%
Doctorate	0	0	0	1	0	1	4	9	4	3	5.3	4.2	2.2	36%
All	83	143	135	77	94	156	119	107	175	96	126.0	130.6	118.5	-19%
VETERINARY MEDICINE, COLLEGE OF														
First Profes.	60	63	64	61	64	59	66	70	64	69	67.7	65.6	64.0	8%
Masters	3	7	9	7	4	11	11	8	7	8	7.7	9.0	7.5	7%
Doctorate	1	1	0	2	1	4	2	2	1	5	2.7	2.8	1.9	163%
All	64	71	73	70	69	74	79	80	72	82	78.0	77.4	73.4	12%
GRADUATE SCHOOL														
Grad. Certif.	0	0	1	22	14	18	18	63	90	96	83.0	57.0	32.2	198%
Masters	14	26	42	55	55	61	81	85	74	115	91.3	83.2	60.8	89%
Doctorate	10	9	8	10	10	6	14	9	12	13	11.3	10.8	10.1	29%
All	24	35	51	87	79	85	113	157	176	224	185.7	151.0	103.1	117%

IR&P/RS 9/11

Table 2.2: Degrees Awarded by Colleges at the University of Missouri - Kansas City

COLLEGE/DEGREE	FY 2002	FY 2003	FY 2004	FY 2005	FY 2006	FY 2007	FY 2008	FY 2009	FY 2010	FY 2011	3-Year	Average 5-Year	10-Year	Change in FY11 relative to the 10-Year Avg.
ARTS AND SCIENCES, COLLEGE OF														
Bachelors	703	684	755	795	805	778	713	829	931	813	857.7	812.8	780.6	4%
Masters	135	152	145	150	189	161	198	187	173	210	190.0	185.8	170.0	24%
Doctorate	1	3	1	0	4	4	2	4	4	2	3.3	3.2	2.5	-20%
All	839	839	901	945	998	943	913	1,020	1,108	1,025	1,051.0	1,001.8	953.1	8%
BIOLOGICAL SCIENCES, SCHOOL OF														
Bachelors	60	56	49	57	64	74	58	61	84	71	72.0	69.6	63.4	12%
Masters	17	14	13	21	16	19	18	20	23	21	21.3	20.2	18.2	15%
All	77	70	62	78	80	93	76	81	107	92	93.3	89.8	81.6	13%
COMPUTING AND ENGINEERING, SCHOOL OF														
Bachelors	127	96	146	109	93	89	80	86	95	82	87.7	86.4	100.3	-18%
Masters	51	59	74	85	75	89	112	144	135	194	157.7	134.8	101.8	91%
All	178	155	220	194	168	178	192	230	230	276	245.3	221.2	202.1	37%
DENTISTRY, SCHOOL OF														
Bachelors	30	30	28	24	28	31	28	27	31	34	30.7	30.2	29.1	17%
Grad. Certif.	8	21	9	17	23	19	22	17	17	17	17.0	18.4	17.0	0%
First Profes.	83	83	78	79	92	101	100	102	96	98	98.7	99.4	91.2	7%
Masters	4	2	6	2	0	3	4	9	7	9	8.3	6.4	4.6	96%
All	125	136	121	122	143	154	154	155	151	158	154.7	154.4	141.9	11%
EDUCATION, SCHOOL OF														
Bachelors	89	83	119	107	107	124	98	118	116	107	113.7	112.6	106.8	0%
Masters	188	280	223	200	196	156	147	184	152	131	155.7	154.0	185.7	-29%
Ed. Specialist	43	53	59	41	41	39	40	49	33	25	35.7	37.2	42.3	-41%
Doctorate	8	9	13	7	4	5	10	9	5	4	6.0	6.6	7.4	-46%
All	328	425	414	355	348	324	295	360	306	267	311.0	310.4	342.2	-22%
GRADUATE STUDIES, SCHOOL OF														
Grad. Certif.								1	0	1	1.0	0.6	N/A	
Doctorate	38	36	33	29	43	43	32	24	32	31	29.0	32.4	34.1	-9%
All	38	36	33	29	43	43	32	25	32	33	30.0	33.0	34.4	-4%

Table 2.2: Degrees Awarded by Colleges at the University of Missouri - Kansas City (continued)

COLLEGE/DEGREE	FY 2002	FY 2003	FY 2004	FY 2005	FY 2006	FY 2007	FY 2008	FY 2009	FY 2010	FY 2011	3-Year	Average		Change in FY11 relative to the 10-Year Avg.
												5-Year	10-Year	
LAW, SCHOOL OF														
First Profes.	116	132	159	153	156	176	150	153	156	156	155.0	158.2	150.7	4%
Masters	18	29	22	15	21	19	22	32	32	30	31.3	25.2	24.0	25%
All	134	161	181	168	177	195	172	185	188	186	186.3	185.2	174.7	6%
MANAGEMENT, SCHOOL OF														
Bachelors	162	123	147	180	189	194	178	195	192	207	198.0	193.2	176.7	17%
Masters	219	232	222	213	181	213	228	240	254	257	250.3	238.4	225.9	14%
All	381	355	369	393	370	407	406	435	446	464	448.3	431.6	402.6	15%
MEDICINE, SCHOOL OF														
First Profes.	97	81	93	83	90	84	86	87	92	101	93.3	90.0	89.4	13%
Masters							0	0	4	4	2.7	N/A	N/A	
All	97	81	93	83	90	84	86	87	96	105	96.0	91.6	90.2	16%
MUSIC AND DANCE, CONSERVATORY OF														
Bachelors	33	49	52	55	57	52	49	70	70	47	62.3	57.6	53.4	-12%
Grad. Certif.		1	0	2	0	0	2	2	1	5	2.7	2.0	N/A	
Masters	36	30	29	49	41	47	47	43	56	38	45.7	46.2	41.6	-9%
Doctorate	9	12	17	9	9	14	12	21	20	21	20.7	17.6	14.4	46%
All	78	92	98	115	107	113	110	136	147	111	131.3	123.4	110.7	0%
NURSING, SCHOOL OF														
Bachelors	17	14	14	61	76	76	80	102	107	148	119.0	102.6	69.5	113%
Masters	67	69	58	58	69	59	75	57	74	78	69.7	68.6	66.4	17%
Doctorate	3	2	1	3	1	5	3	10	22	19	17.0	11.8	6.9	175%
All	87	85	73	122	146	140	158	169	203	245	205.7	183.0	142.8	72%
PHARMACY, SCHOOL OF														
Bachelors	0	0	6	5	6	10	5	8	7	14	9.7	8.8	6.1	130%
First Profes.	63	68	60	62	77	77	72	70	111	113	98.0	88.6	77.3	46%
Masters	6	10	3	1	3	3	1	1	1	0	0.7	1.2	2.9	-100%
All	69	78	69	68	86	90	78	79	119	127	108.3	98.6	86.3	47%

Table 2.3: Degrees Awarded by Colleges at the Missouri University of Science and Technology

This information is no longer provided since Missouri S&T eliminated schools and colleges in FY 2008.

Table 2.4: Degrees Awarded by Colleges at the University of Missouri - St. Louis

COLLEGE/DEGREE	FY 2002	FY 2003	FY 2004	FY 2005	FY 2006	FY 2007	FY 2008	FY 2009	FY 2010	FY 2011	3-Year	Average 5-Year	10-Year	Change in FY11 relative to the 10-Year Avg.
ARTS AND SCIENCES, COLLEGE OF														
Bachelors	724	632	644	640	674	759	734	749	767	775	763.7	756.8	709.8	9%
Grad. Certif.	14	19	18	25	26	34	18	30	35	20	28.3	27.4	23.9	-16%
Masters	177	187	188	208	201	211	214	215	241	241	232.3	224.4	208.3	16%
Doctorate	26	20	23	27	30	30	24	34	35	24	31.0	29.4	27.3	-12%
All	941	858	873	900	931	1,034	990	1,028	1,078	1,060	1,055.3	1,038.0	969.3	9%
BUSINESS ADMINISTRATION, COLLEGE OF														
Bachelors	547	566	612	532	542	579	598	573	545	579	565.7	574.8	567.3	2%
Grad. Certif.	30	46	17	21	16	16	18	12	11	13	12.0	14.0	20.0	-35%
Masters	127	135	117	145	133	163	163	210	162	171	181.0	173.8	152.6	12%
Doctorate	0	0	0	0	0	1	1	0	2	1	1.0	1.0	0.5	100%
All	704	747	746	698	691	759	780	795	720	764	759.7	763.6	740.4	3%
EDUCATION, COLLEGE OF														
Bachelors	306	271	289	276	247	260	230	271	229	256	252.0	249.2	263.5	-3%
Grad. Certif.			5	6	11	8	1	4	5	10	6.3	5.6	N/A	
Masters	227	239	267	333	302	252	255	262	287	340	296.3	279.2	276.4	23%
Ed. Specialist				3	29	31	28	42	31	22	31.7	30.8	N/A	
Doctorate	13	20	15	21	24	18	27	27	24	21	24.0	23.4	21.0	0%
All	546	530	576	639	613	569	541	606	576	649	610.3	588.2	584.5	11%
FINE ARTS AND COMMUNICATION, COLLEGE OF														
Bachelors	102	205	174	219	219	210	210	188	214	223	208.3	209.0	196.4	14%
Masters			1	7	16	19	26	14	22	17	17.7	19.6	N/A	
All	102	205	175	226	235	229	236	202	236	240	226.0	228.6	208.6	
NURSING, COLLEGE OF														
Bachelors	110	115	123	152	160	163	186	181	200	201	194.0	186.2	159.1	26%
Grad. Certif.							5	1	1	4	2.0	N/A	N/A	
Masters	88	34	64	60	46	48	51	43	41	72	52.0	51.0	54.7	32%
Doctorate	5	4	1	1	4	2	9	2	2	4	2.7	3.8	3.4	18%
All	203	153	188	213	210	213	251	227	244	281	250.7	243.2	218.3	29%

Table 2.4: Degrees Awarded by Colleges at the University of Missouri - St. Louis (continued)

COLLEGE/DEGREE	FY 2002	FY 2003	FY 2004	FY 2005	FY 2006	FY 2007	FY 2008	FY 2009	FY 2010	FY 2011	3-Year	Average 5-Year	10-Year	Change in FY11 relative to the 10-Year Avg.
OPTOMETRY, COLLEGE OF														
First Profes.	42	39	35	46	34	44	38	44	41	44	43.0	42.2	40.7	8%
Masters	0	2	1	0	0	0	0	1	2	1	1.3	0.8	0.7	43%
Doctorate	1	1	1	2	0	1	1	0	0	0	0.0	0.4	0.7	-100%
All	43	42	37	48	34	45	39	45	43	45	44.3	43.4	42.1	7%
ENGINEERING PROGRAM														
Bachelors	29	26	42	42	33	48	46	52	56	58	55.3	52.0	43.2	34%
EVENING COLLEGE														
Bachelors	69	38	48	41							N/A	N/A	N/A	
GRADUATE SCHOOL														
Bachelors					30	20	12	4	0	0	1.3	7.2	N/A	
Grad. Certif.	20	22	14	24	24	21	22	33	30	24	29.0	26.0	23.4	3%
Masters	18	25	37	33	32	25	20	26	16	26	22.7	22.6	25.8	1%
All	38	47	51	57	86	66	54	63	46	50	53.0	55.8	55.8	-10%

IR&P/RS 9/11