

**The 2011-2012 Report of Degrees Awarded
by the University of Missouri**

Randy Sade
Assistant Research Analyst

Office of Institutional Research and Planning
University of Missouri System

September 2012

IR&P 2012, Report 1

<http://www.umsystem.edu/ums/fa/planning/>

The 2011-2012 Report of Degrees Awarded by the University of Missouri

Executive Summary

This report includes graphs and tables of degrees awarded by each campus since 2003. The first table provides a summary of degrees by level for each campus, while the second table series gives the number of awards by the colleges of each campus. The *Department Detail Summary* reflects the number of degrees awarded by academic department. These tables also show the average number of degrees over a 3, 5, & 10-year period and the percent change in FY 2012 that is relative to the 10-year average.

The highlights of the report include:

- The University of Missouri System awarded a record 16,515 degrees, a 17% growth in FY 2012 relative to the 10-year average. (Table 1)
- Relative to the 10-year average, the number of FY 2012 masters degrees for the University of Missouri System increased 18%, doctorates increased 24%, and graduate certificates increased 70%.
- Comparing FY 2012 degrees to the 10-year averages, the most notable increases are: bachelors degrees awarded are up 19% at UM-Columbia, 22% at UM-Kansas City, and 24% at Missouri S&T; masters degrees are up 18% at UM-Columbia and 27% at Missouri S&T; and doctorates are up 43% at UM-Kansas City and 33% at UM-St. Louis.
- First Professional degrees at UM-Kansas City increased 6% and 16% at UM-St. Louis when comparing FY 2012 to the 10-year average.

Notes Regarding Use of the Report:

- The official annual reporting period is from July 1 to June 30 of the following calendar year. For example, FY12 includes summer and fall graduates from 2011 and the spring graduates of 2012.
- Please note the axis scale range when considering graphs. It may change from campus to campus.
- Previous year's tables may differ because tables in the report have been changed from the use of running averages to 3-, 5-, and 10-year averages.
- This report includes a 10-year average as related to FY 2012.
- Source for this report is the printed Completions Report.

Technical Notes for Use with the Report:

Footnotes

- Footnotes are of the utmost importance in reading tables in the appendix.

Name Changes

- If a program name changes, the report history is changed to reflect the new name and is footnoted.
- If a degree name or description is changed, the report history is changed to the new description and is footnoted.
- If a department name changes, the report history is changed to the new description and NO footnotes are made.
- If a school or college changes, the report history is changed to the new description and NO footnotes are made.

Program Moves

- If a program moves to another department or school, the data are reported as is – that is, report history is not changed and the new data are reported in the new department. A new footnote is added, i.e., program is moving. Eventually – when there are no more degrees for the old department, the old department is hidden in the report.
- If a program moves to another school or college, the data are reported as is – that is, report history is not changed and the new data are reported in the new school or college. A footnote is added, i.e., program is moving. Eventually – when there are no more degrees for the old program, the former program is hidden in the report.

Figure 1: Rate of Change in Total Degrees Awarded by Campus, since 2003

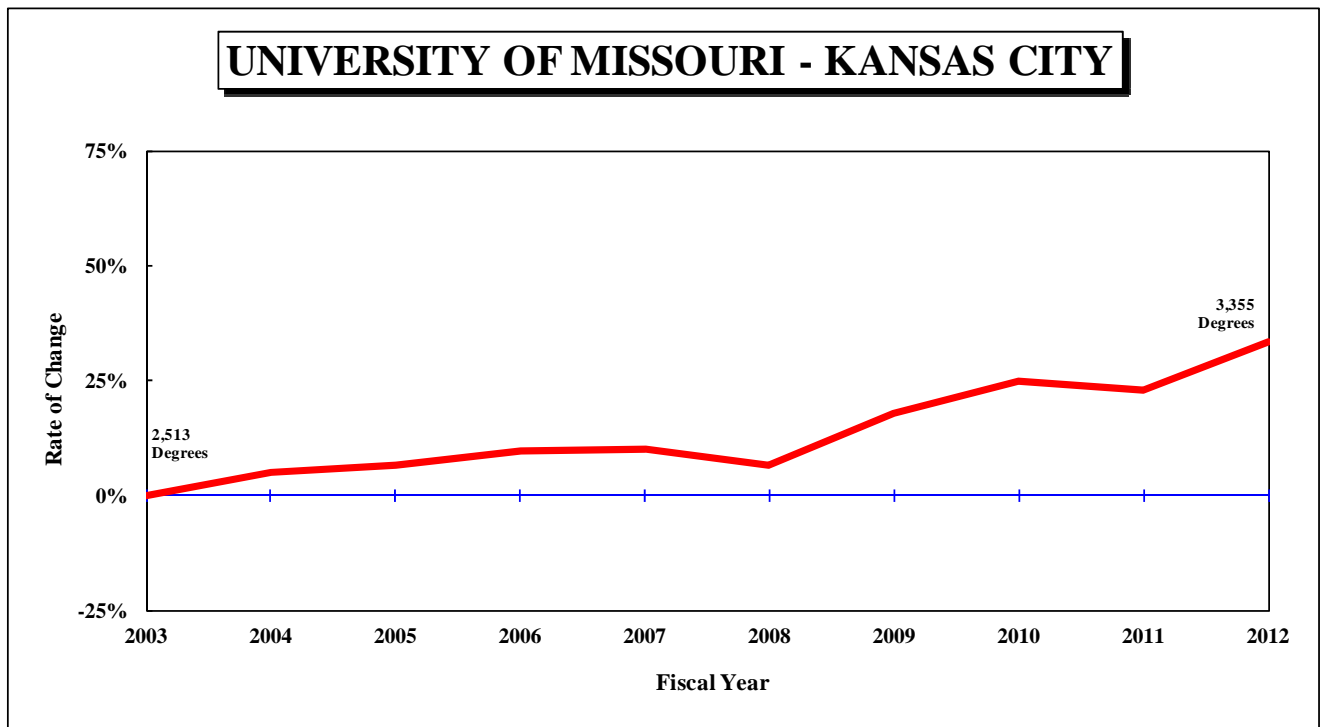
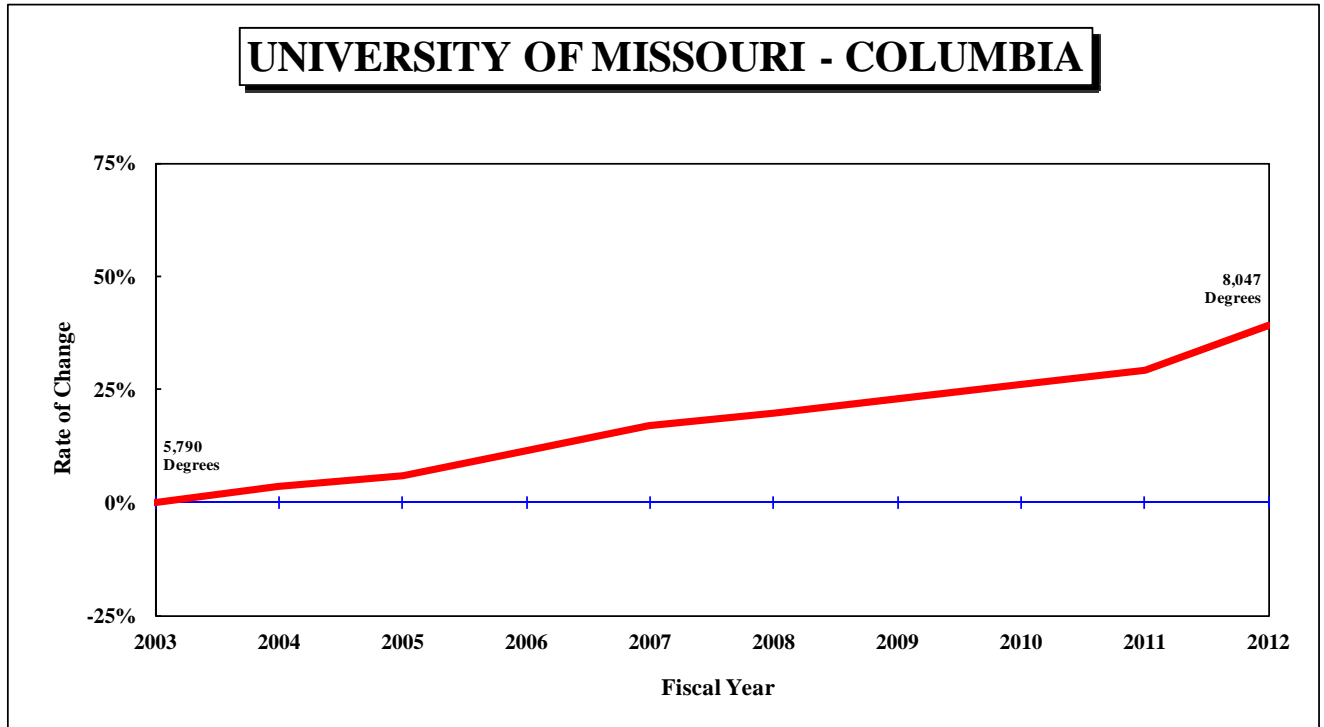


Figure 1: Rate of Change in Total Degrees Awarded by Campus, since 2003
- Continued

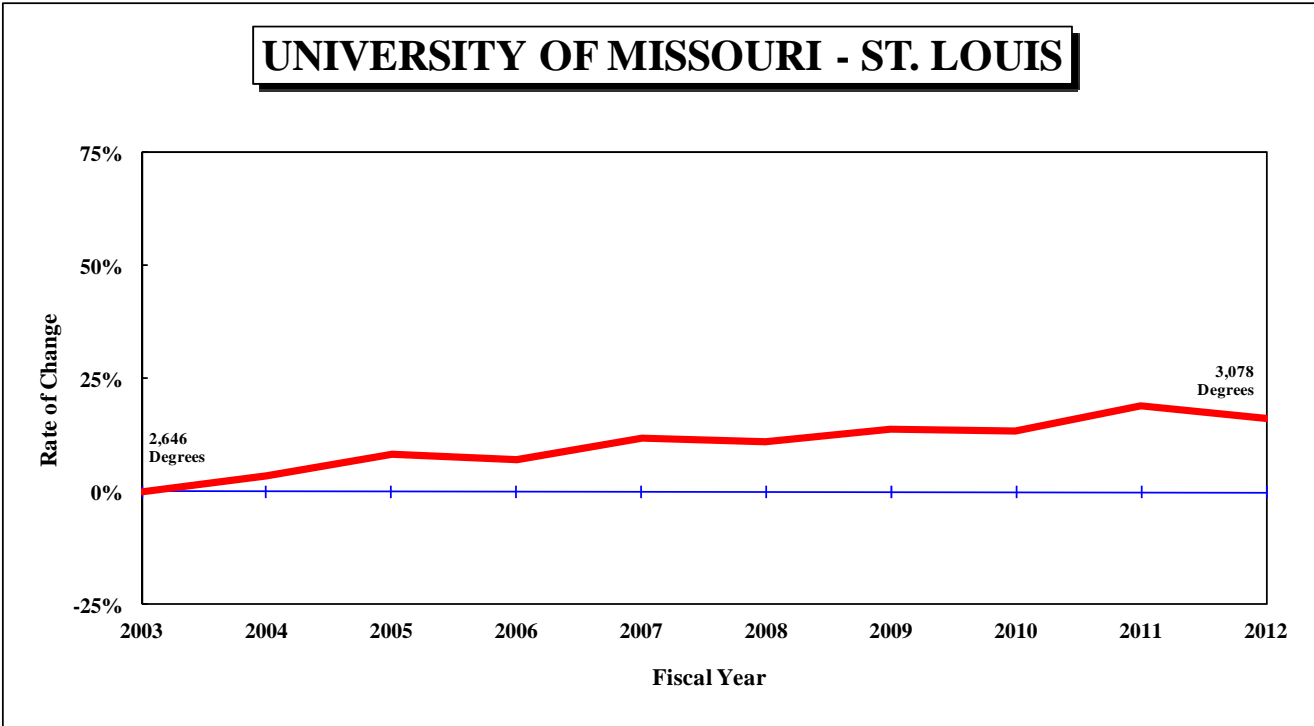
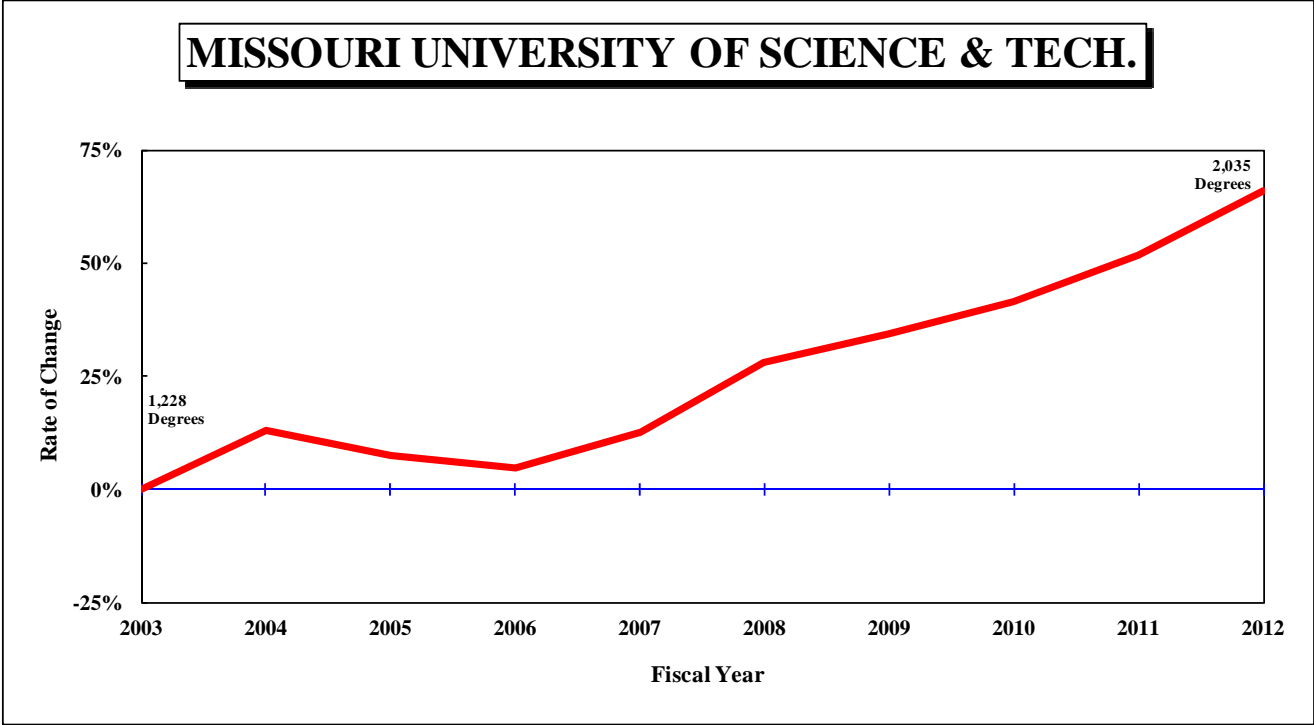


Figure 1: Rate of Change in Total Degrees Awarded by Campus, since 2003
Continued

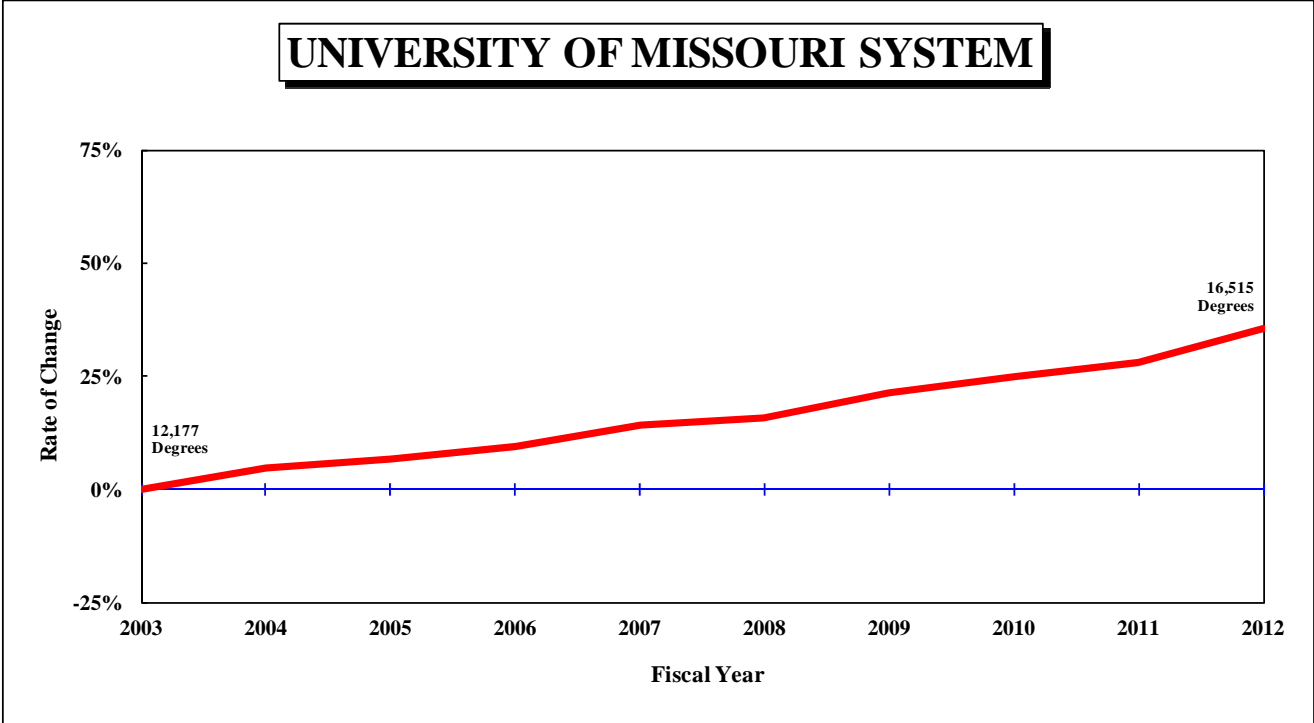


Figure 2: Rate of Change in Total Degrees Awarded by Campus, since 2003

UNIVERSITY OF MISSOURI - COLUMBIA

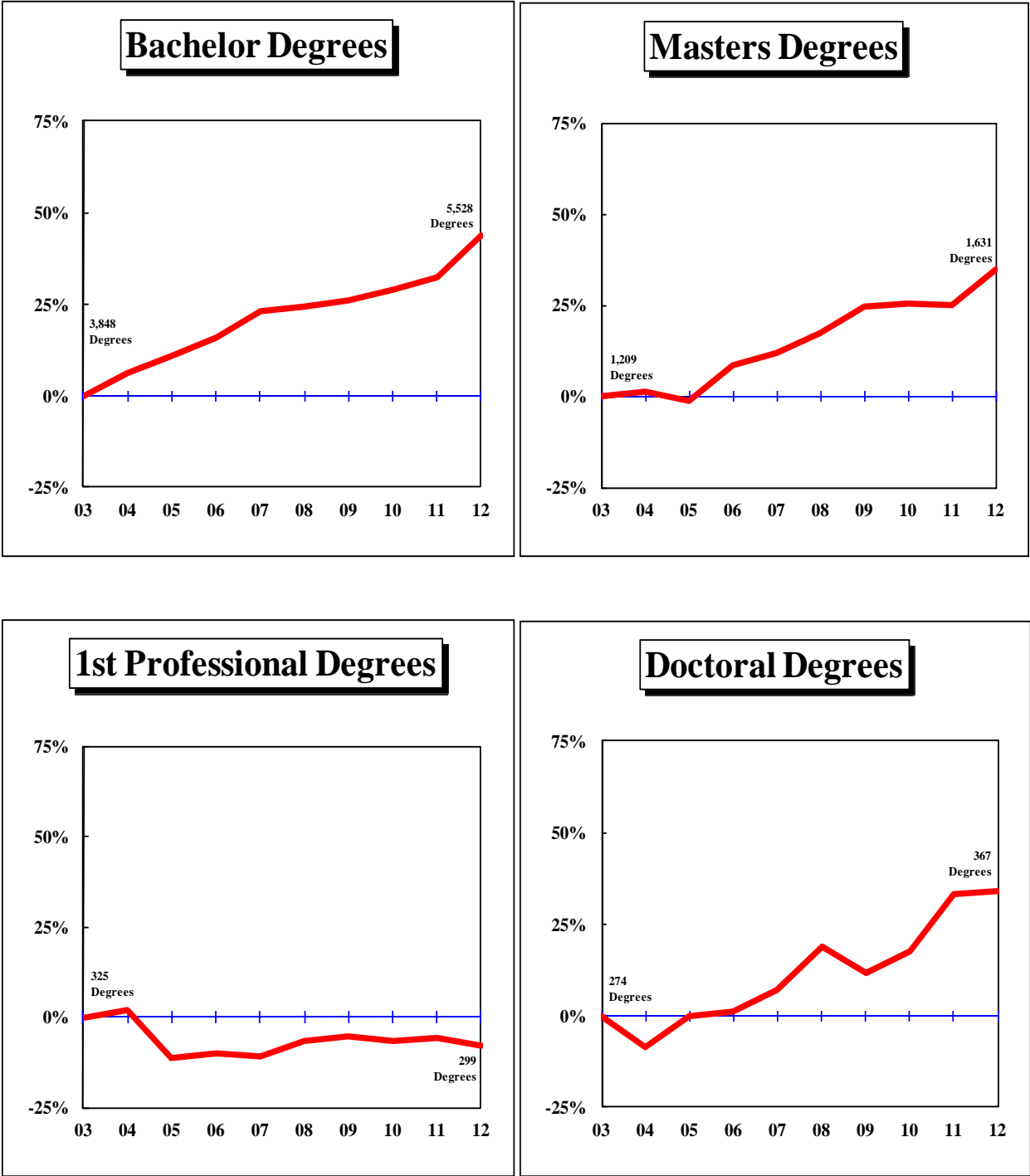


Figure 2: Rate of Change in Total Degrees Awarded by Campus, since 2003
 - Continued

UNIVERSITY OF MISSOURI - KANSAS CITY

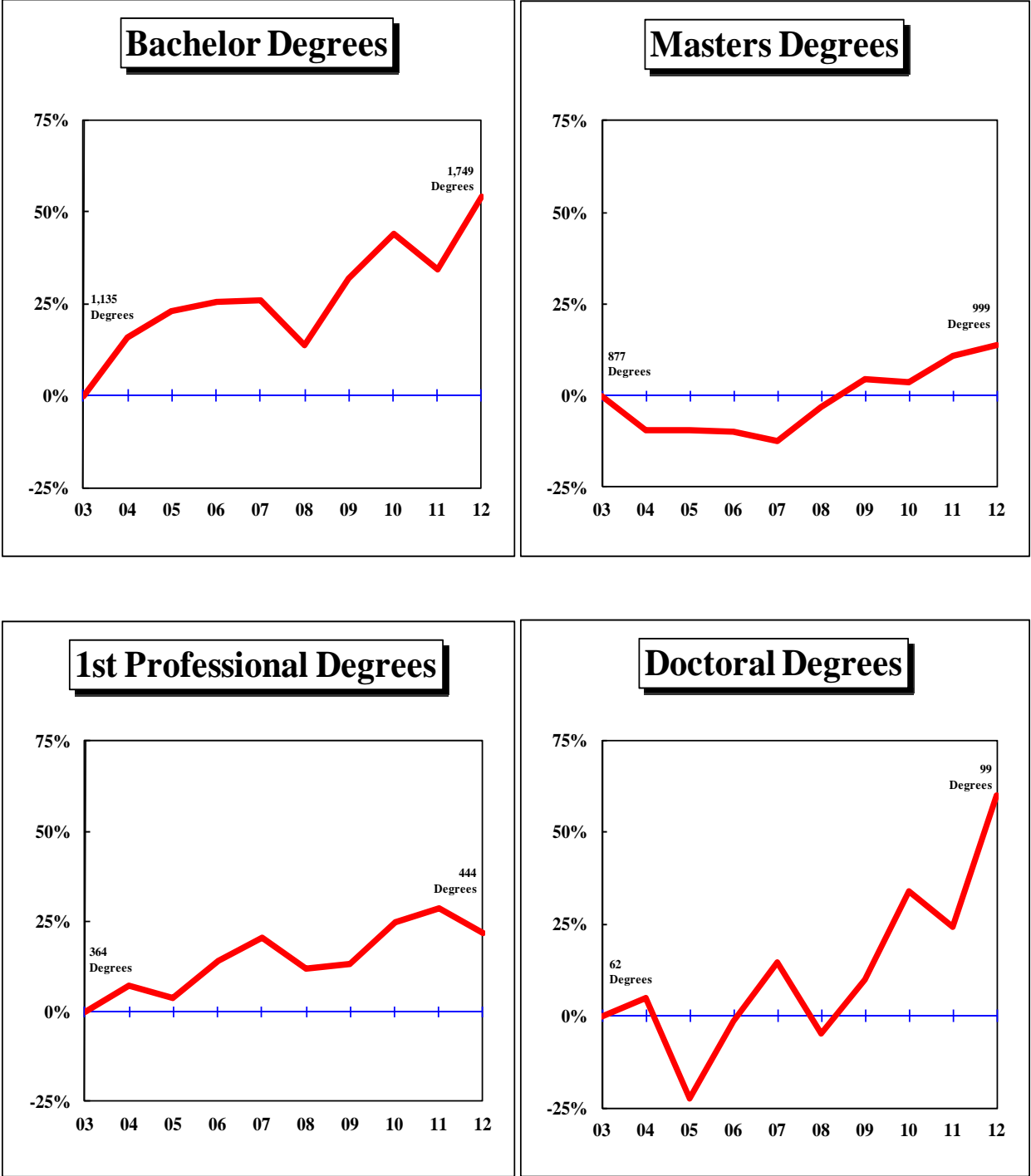


Figure 2: Rate of Change in Total Degrees Awarded by Campus, since 2002
 - Continued

MISSOURI UNIVERSITY OF SCIENCE AND TECHNOLOGY

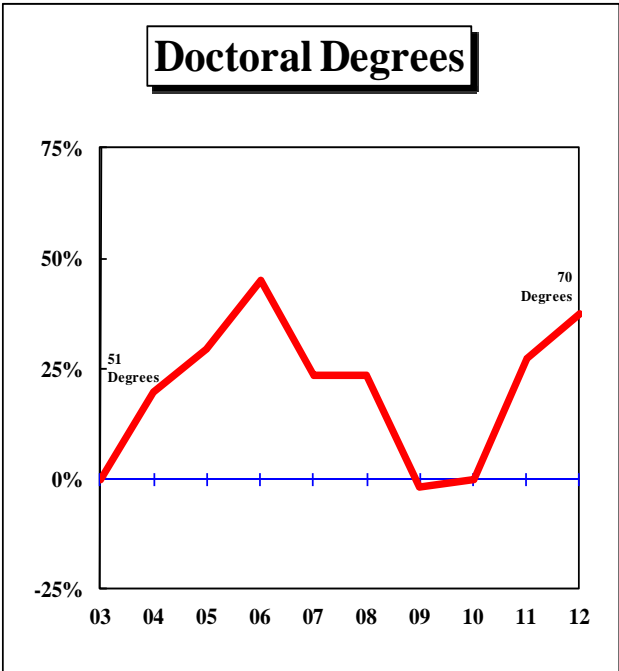
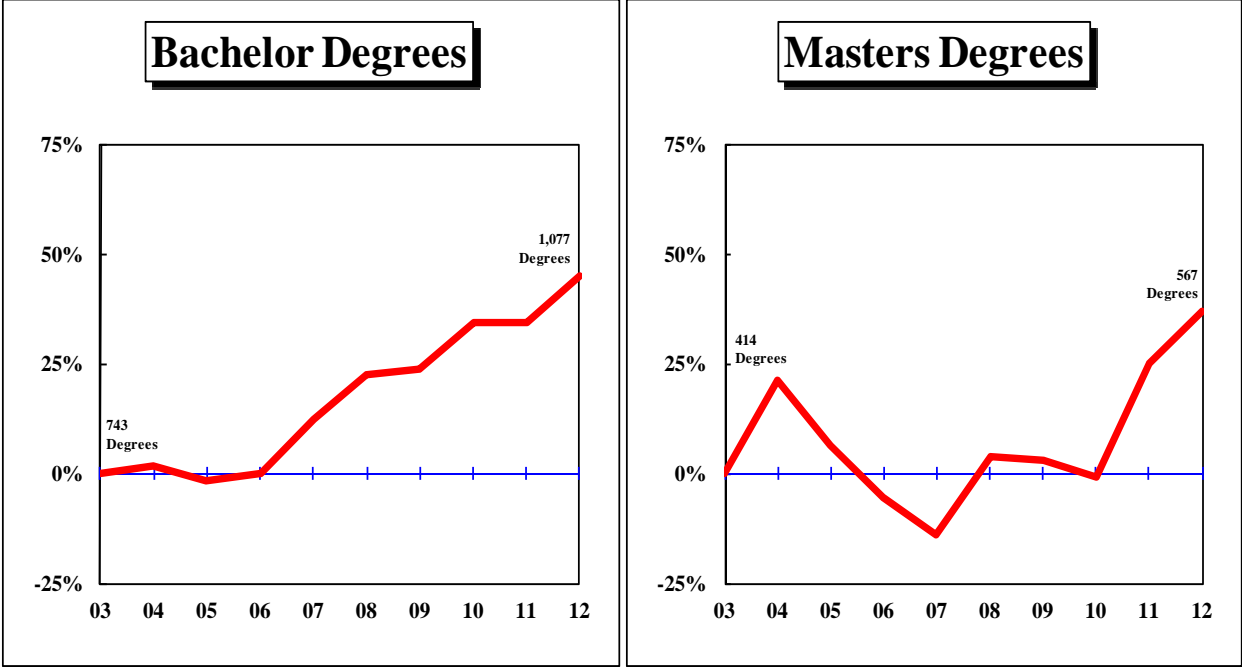


Figure 2: Rate of Change in Total Degrees Awarded by Campus, since 2003
 - Continued

UNIVERSITY OF MISSOURI – ST. LOUIS

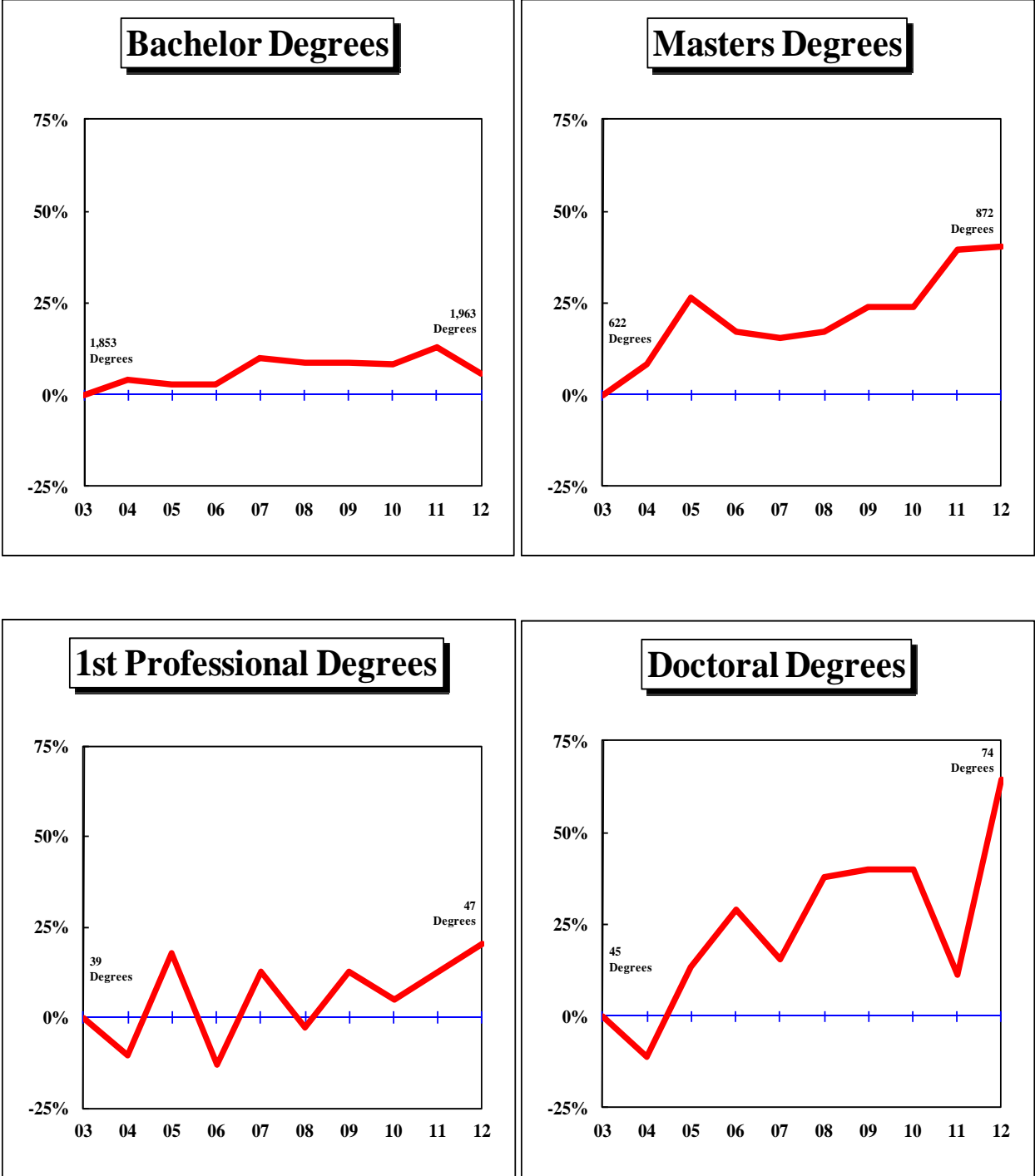


Figure 2: Rate of Change in Total Degrees Awarded by Campus, since 2003
 - Continued

UNIVERSITY OF MISSOURI SYSTEM

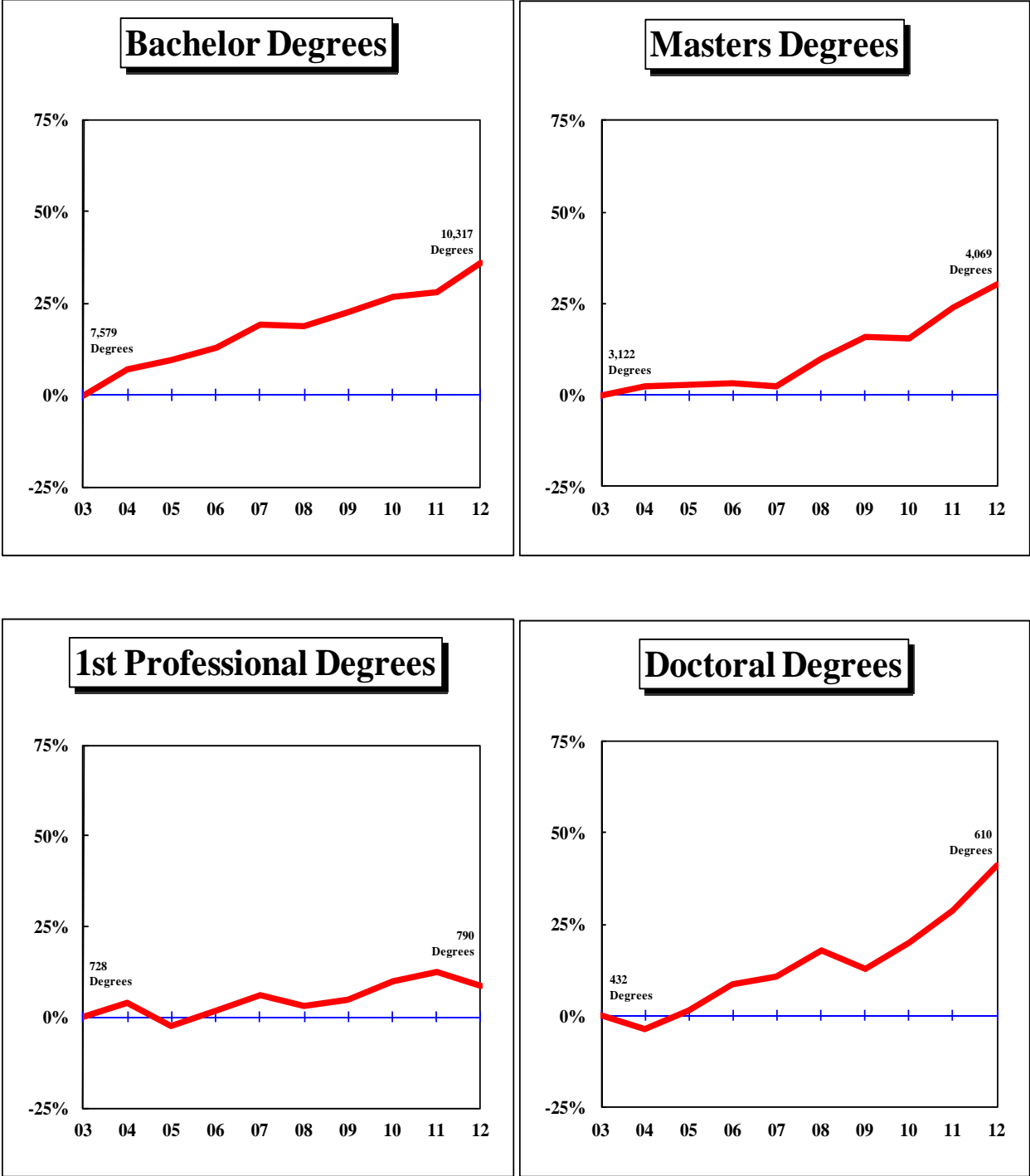


Table 1. Degrees Awarded at the University Of Missouri, July 1, 2002 through June 30, 2012

DEGREE	FY 2003	FY 2004	FY 2005	FY 2006	FY 2007	FY 2008	FY 2009	FY 2010	FY 2011	FY 2012	3-Year	Average 5-Year	10-Year	Change in FY12 relative to the 10-Year Avg.
UNIVERSITY OF MISSOURI - COLUMBIA														
Bachelors	3,848	4,086	4,259	4,461	4,736	4,779	4,855	4,963	5,087	5,528	5,192.7	5,042.4	4,660.2	19%
Graduate Certificate	93	69	79	84	68	69	88	142	162	179	161.0	128.0	103.3	73%
First Professional	325	331	288	292	289	303	307	304	306	299	303.0	303.8	304.4	-2%
Masters	1,209	1,222	1,195	1,314	1,350	1,421	1,506	1,515	1,513	1,631	1,553.0	1,517.2	1,387.6	18%
Education Specialist	41	23	33	21	36	34	57	59	53	43	51.7	49.2	40.0	8%
Doctorate	274	251	274	277	293	326	306	322	365	367	351.3	337.2	305.5	20%
Total, All Degrees	5,790	5,982	6,128	6,449	6,772	6,932	7,119	7,305	7,486	8,047	7,612.7	7,377.8	6,801.0	18%
UNIVERSITY OF MISSOURI - KANSAS CITY														
Bachelors	1,135	1,316	1,393	1,425	1,428	1,289	1,496	1,633	1,523	1,749	1,635.0	1,538.0	1,438.7	22%
Graduate Certificate	22	9	19	23	19	24	20	18	24	29	23.7	23.0	20.7	40%
First Professional	364	390	377	415	438	408	412	455	468	444	455.7	437.4	417.1	6%
Masters	877	795	794	791	769	852	917	911	972	999	960.7	930.2	867.7	15%
Education Specialist	53	59	41	41	39	40	49	33	25	35	31.0	36.4	41.5	-16%
Doctorate	62	65	48	61	71	59	68	83	77	99	86.3	77.2	69.3	43%
Total, All Degrees	2,513	2,634	2,672	2,756	2,764	2,672	2,962	3,133	3,089	3,355	3,192.3	3,042.2	2,855.0	18%
MISSOURI UNIVERSITY OF SCIENCE AND TECHNOLOGY														
Undergrad. Certificate					1	3	2	1	4	2	2.3	2.4	N/A	
Bachelors	743	756	731	744	834	910	920	997	997	1,077	1,023.7	980.2	870.9	24%
Graduate Certificate	20	70	83	75	127	164	250	278	282	319	293.0	258.6	166.8	91%
Masters	414	502	440	392	356	430	426	411	517	567	498.3	470.2	445.5	27%
Doctorate	51	61	66	74	63	63	50	51	65	70	62.0	59.8	61.4	14%
Total, All Degrees	1,228	1,389	1,320	1,285	1,381	1,570	1,648	1,738	1,865	2,035	1,879.3	1,771.2	1,545.9	32%
UNIVERSITY OF MISSOURI - ST. LOUIS														
Bachelors	1,853	1,932	1,902	1,905	2,039	2,016	2,018	2,011	2,092	1,963	2,022.0	2,020.0	1,973.1	-1%
Graduate Certificate	87	54	76	77	79	64	80	82	71	96	83.0	78.6	76.6	25%
First Professional	39	35	46	34	44	38	44	41	44	47	44.0	42.8	41.2	14%
Masters	622	675	786	730	718	729	771	771	868	872	837.0	802.2	754.2	16%
Education Specialist			3	29	31	28	42	31	22	26	26.3	29.8	N/A	
Doctorate	45	40	51	58	52	62	63	63	50	74	62.3	62.4	55.8	33%
Total, All Degrees	2,646	2,736	2,864	2,833	2,963	2,937	3,018	2,999	3,147	3,078	3,074.7	3,035.8	2,922.1	5%

Table 1. Degrees Awarded at the University Of Missouri, July 1, 2002 through June 30, 2012 (continued)

DEGREE	FY 2003	FY 2004	FY 2005	FY 2006	FY 2007	FY 2008	FY 2009	FY 2010	FY 2011	FY 2012	3-Year	Average 5-Year	10-Year	Change in FY12 relative to the 10-Year Avg.
UNIVERSITY OF MISSOURI SYSTEM														
Undergrad. Certificate					1	3	2	1	4	2	2.3	2.4	N/A	
Bachelors	7,579	8,090	8,285	8,535	9,037	8,994	9,289	9,604	9,699	10,317	9,873.3	9,580.6	8,942.9	15%
Graduate Certificate	222	202	257	259	293	321	438	520	539	623	560.7	488.2	367.4	70%
First Professional	728	756	711	741	771	749	763	800	818	790	802.7	784.0	762.7	4%
Masters	3,122	3,194	3,215	3,227	3,193	3,432	3,620	3,608	3,870	4,069	3,849.0	3,719.8	3,455.0	18%
Education Specialist	94	82	77	91	106	102	148	123	100	104	109.0	115.4	102.7	1%
Doctorate	432	417	439	470	479	510	487	519	557	610	562.0	536.6	492.0	24%
Total, All Degrees	12,177	12,741	12,984	13,323	13,880	14,111	14,747	15,175	15,587	16,515	15,759.0	15,227.0	14,124.0	17%

IR&P/RS 8/12

Table 2.1: Degrees Awarded by Colleges at the University of Missouri – Columbia

COLLEGE/DEGREE	FY 2003	FY 2004	FY 2005	FY 2006	FY 2007	FY 2008	FY 2009	FY 2010	FY 2011	FY 2012	3-Year	Average 5-Year	10-Year	Change in FY12 relative to the 10-Year Avg.
AGRICULTURE, FOOD, AND NATURAL RESOURCES, COLLEGE OF														
Bachelors	339	335	306	356	344	367	391	383	400	432	405.0	394.6	365.3	18%
Masters	37	43	37	43	55	46	51	38	45	51	44.7	46.2	44.6	14%
Doctorate	32	27	24	31	26	26	32	28	27	24	26.3	27.4	27.7	-13%
All	408	405	367	430	425	439	474	449	472	507	476.0	468.2	437.6	16%
ARTS AND SCIENCE, COLLEGE OF														
Bachelors	1,490	1,578	1,549	1,633	1,775	1,725	1,741	1,744	1,812	1,961	1,839.0	1,796.6	1,700.8	15%
Masters	143	130	136	159	161	158	176	144	176	169	163.0	164.6	155.2	9%
Doctorate	92	94	101	100	87	108	97	104	98	119	107.0	105.2	100.0	19%
All	1,725	1,802	1,786	1,892	2,023	1,991	2,014	1,992	2,086	2,249	2,109.0	2,066.4	1,956.0	15%
BUSINESS, COLLEGE OF														
Bachelors	529	632	711	777	792	807	779	900	838	824	854.0	829.6	758.9	9%
Grad. Certif.	60	68	56	51	50	30	9	15	27	23	21.7	20.8	38.9	-41%
Masters	153	191	174	197	213	214	204	237	220	217	224.7	218.4	202.0	7%
Doctorate	5	8	8	6	14	6	6	4	6	10	6.7	6.4	7.3	37%
All	747	899	949	1,031	1,069	1,057	998	1,156	1,091	1,074	1,107.0	1,075.2	1,007.1	7%
EDUCATION, COLLEGE OF														
Bachelors	204	219	234	283	269	249	246	239	246	274	253.0	250.8	246.3	11%
Masters	412	412	360	438	440	450	485	502	495	532	509.7	492.8	452.6	18%
Ed. Specialist	41	23	33	21	36	34	57	59	53	43	51.7	49.2	40.0	8%
Doctorate	70	70	73	62	84	87	87	74	84	79	79.0	82.2	77.0	3%
All	727	724	700	804	829	820	875	874	878	928	893.3	875.0	815.9	14%
ENGINEERING, COLLEGE OF														
Bachelors	322	359	378	343	383	368	386	398	422	518	446.0	418.4	387.7	34%
Masters	103	97	87	107	60	93	90	78	109	100	95.7	94.0	92.4	8%
Doctorate	30	16	24	33	39	36	24	24	44	32	33.3	32.0	30.2	6%
All	455	472	489	483	482	497	500	500	575	650	575.0	544.4	510.3	27%
HEALTH PROFESSIONS, SCHOOL OF														
Bachelors	99	96	122	113	138	153	155	176	242	345	254.3	214.2	163.9	110%
Masters	50	39	62	67	56	96	82	48	40	55	47.7	64.2	59.5	-8%
Doctorate	0	0	0	0	0	0	0	36	43	38	39.0	23.4	11.7	225%
All	149	135	184	180	194	249	237	260	325	438	341.0	301.8	235.1	86%

Table 2.1: Degrees Awarded by Colleges at the University of Missouri – Columbia (continued)

COLLEGE/DEGREE	FY 2003	FY 2004	FY 2005	FY 2006	FY 2007	FY 2008	FY 2009	FY 2010	FY 2011	FY 2012	3-Year	Average		Change in FY12 relative to the 10-Year Avg.
												5-Year	10-Year	
HUMAN ENVIRONMENTAL SCIENCES, COLLEGE OF														
Bachelors	228	233	262	250	234	278	298	274	275	279	276.0	280.8	261.1	7%
Grad. Certif.				1	0	0	0	0	0	0	0.0	0.0	N/A	
Masters	16	15	35	24	15	18	35	17	30	34	27.0	26.8	23.9	42%
Doctorate	11	6	3	4	7	5	9	8	12	7	9.0	8.2	7.2	-3%
All	255	254	300	279	256	301	342	299	317	320	312.0	315.8	292.3	9%
JOURNALISM, SCHOOL OF														
Bachelors	337	364	404	412	426	475	520	521	510	534	521.7	512.0	450.3	19%
Masters	75	64	94	70	69	91	107	112	88	111	103.7	101.8	88.1	26%
Doctorate	8	8	10	14	5	10	9	8	12	10	10.0	9.8	9.4	6%
All	420	436	508	496	500	576	636	641	610	655	635.3	623.6	547.8	20%
LAW, SCHOOL OF														
Grad. Certif.	33	0	1	18	0	21	16	37	39	26	34.0	27.8	19.1	36%
First Profes.	172	175	138	139	143	148	152	141	144	142	142.3	145.4	149.4	-5%
Masters	7	12	10	7	13	15	13	7	19	8	11.3	12.4	11.1	-28%
All	212	187	149	164	156	184	181	185	202	176	187.7	185.6	179.6	-2%
MEDICINE, SCHOOL OF														
First Profes.	90	92	89	89	87	89	85	99	93	87	93.0	90.6	90.0	-3%
Masters	29	22	27	29	25	32	36	41	48	51	46.7	41.6	34.0	50%
Doctorate	10	5	7	5	8	14	10	11	7	14	10.7	11.2	9.1	54%
All	129	119	123	123	120	135	131	151	148	152	150.3	143.4	133.1	14%
NATURAL RESOURCES, SCHOOL OF														
Bachelors	122	104	109	99	131	113	115	96	107	113	105.3	108.8	110.9	2%
Masters	16	17	27	21	26	18	20	21	26	28	25.0	22.6	22.0	27%
Doctorate	2	6	9	7	9	10	7	5	7	8	6.7	7.4	7.0	14%
All	140	127	145	127	166	141	142	122	140	149	137.0	138.8	139.9	7%
NURSING, SCHOOL OF														
Bachelors	143	134	156	166	201	187	190	190	193	211	198.0	194.2	177.1	19%
Masters	27	26	36	28	33	40	50	60	43	43	48.7	47.2	38.6	11%
Doctorate	4	3	2	4	3	4	5	3	4	4	3.7	4.0	3.6	11%
All	174	163	194	198	237	231	245	253	240	258	250.3	245.4	219.3	18%

Table 2.1: Degrees Awarded by Colleges at the University of Missouri – Columbia (continued)

COLLEGE/DEGREE	FY 2003	FY 2004	FY 2005	FY 2006	FY 2007	FY 2008	FY 2009	FY 2010	FY 2011	FY 2012	3-Year	Average 5-Year	10-Year	Change in FY12 relative to the 10-Year Avg.
SOCIAL WORK, SCHOOL OF														
Bachelors	35	32	28	29	43	57	34	42	42	37	40.3	42.4	37.9	-2%
Masters	108	103	48	65	112	58	64	129	51	97	92.3	79.8	83.5	16%
Doctorate	0	0	1	0	1	4	9	4	3	2	3.0	4.4	2.4	-17%
All	143	135	77	94	156	119	107	175	96	136	135.7	126.6	123.8	10%
VETERINARY MEDICINE, COLLEGE OF														
First Profes.	63	64	61	64	59	66	70	64	69	70	67.7	67.8	65.0	8%
Masters	7	9	7	4	11	11	8	7	8	9	8.0	8.6	8.1	11%
Doctorate	1	0	2	1	4	2	2	1	5	2	2.7	2.4	2.0	0%
All	71	73	70	69	74	79	80	72	82	81	78.3	78.8	75.1	8%
GRADUATE SCHOOL														
Grad. Certif.	0	1	22	14	18	18	63	90	96	130	105.3	79.4	45.2	188%
Masters	26	42	55	55	61	81	85	74	115	126	105.0	96.2	72.0	75%
Doctorate	9	8	10	10	6	14	9	12	13	18	14.3	13.2	10.9	65%
All	35	51	87	79	85	113	157	176	224	274	224.7	188.8	128.1	114%

IR&P/RS 8/12

Table 2.2: Degrees Awarded by Colleges at the University of Missouri - Kansas City

COLLEGE/DEGREE	FY 2003	FY 2004	FY 2005	FY 2006	FY 2007	FY 2008	FY 2009	FY 2010	FY 2011	FY 2012	3-Year	Average 5-Year	10-Year	Change in FY12 relative to the 10-Year Avg.
ARTS AND SCIENCES, COLLEGE OF														
Bachelors	684	755	795	805	778	713	829	931	813	934	892.7	844.0	803.7	16%
Grad. Certif.	0	0	0	0	0	0	0	0	0	1	0.3	0.2	0.1	900%
Masters	152	145	150	189	161	198	187	173	210	252	211.7	204.0	181.7	39%
Doctorate	3	1	0	4	4	2	4	4	2	3	3.0	3.0	2.7	11%
All	839	901	945	998	943	913	1,020	1,108	1,025	1,190	1,107.7	1,051.2	988.2	20%
BIOLOGICAL SCIENCES, SCHOOL OF														
Bachelors	56	49	57	64	74	58	61	84	71	95	83.3	73.8	66.9	42%
Masters	14	13	21	16	19	18	20	23	21	26	23.3	21.6	19.1	36%
All	70	62	78	80	93	76	81	107	92	121	106.7	95.4	86.0	41%
COMPUTING AND ENGINEERING, SCHOOL OF														
Bachelors	96	146	109	93	89	80	86	95	82	103	93.3	89.2	97.9	5%
Masters	59	74	85	75	89	112	144	135	194	121	150.0	141.2	108.8	11%
All	155	220	194	168	178	192	230	230	276	224	243.3	230.4	206.7	8%
DENTISTRY, SCHOOL OF														
Bachelors	30	28	24	28	31	28	27	31	34	35	33.3	31.0	29.6	18%
Grad. Certif.	21	9	17	23	19	22	17	17	17	17	17.0	18.0	17.9	-5%
First Profes.	83	78	79	92	101	100	102	96	98	99	97.7	99.0	92.8	7%
Masters	2	6	2	0	3	4	9	7	9	9	8.3	7.6	5.1	76%
All	136	121	122	143	154	154	155	151	158	160	156.3	155.6	145.4	10%
EDUCATION, SCHOOL OF														
Bachelors	83	119	107	107	124	98	118	116	107	113	112.0	110.4	109.2	3%
Masters	280	223	200	196	156	147	184	152	131	144	142.3	151.6	181.3	-21%
Ed. Specialist	53	59	41	41	39	40	49	33	25	35	31.0	36.4	41.5	-16%
Doctorate	9	13	7	4	5	10	9	5	4	13	7.3	8.2	7.9	65%
All	425	414	355	348	324	295	360	306	267	305	292.7	306.6	339.9	-10%
GRADUATE STUDIES, SCHOOL OF														
Grad. Certif.							1	0	2	5	2.3	1.6	N/A	
Doctorate	36	33	29	43	43	32	24	32	31	42	35.0	32.2	34.5	22%
All	36	33	29	43	43	32	25	32	33	47	37.3	33.8	35.3	33%

Table 2.2: Degrees Awarded by Colleges at the University of Missouri - Kansas City (continued)

COLLEGE/DEGREE	FY 2003	FY 2004	FY 2005	FY 2006	FY 2007	FY 2008	FY 2009	FY 2010	FY 2011	FY 2012	3-Year	Average 5-Year	10-Year	Change in FY12 relative to the 10-Year Avg.
LAW, SCHOOL OF														
First Profes.	132	159	153	156	176	150	153	156	156	150	154.0	153.0	154.1	-3%
Masters	29	22	15	21	19	22	32	32	30	18	26.7	26.8	24.0	-25%
All	161	181	168	177	195	172	185	188	186	168	180.7	179.8	178.1	-6%
MANAGEMENT, SCHOOL OF														
Bachelors	123	147	180	189	194	178	195	192	207	228	209.0	200.0	183.3	24%
Masters	232	222	213	181	213	228	240	254	257	276	262.3	251.0	231.6	19%
All	355	369	393	370	407	406	435	446	464	504	471.3	451.0	414.9	21%
MEDICINE, SCHOOL OF														
Grad. Certif.							0	0	0	1	0.3	N/A	N/A	
First Profes.	81	93	83	90	84	86	87	92	101	89	94.0	91.0	88.6	0%
Masters						0	0	4	4	7	5.0	3.0	N/A	
All	81	93	83	90	84	86	87	96	105	97	99.3	94.2	90.2	8%
MUSIC AND DANCE, CONSERVATORY OF														
Bachelors	49	52	55	57	52	49	70	70	47	65	60.7	60.2	56.6	15%
Grad. Certif.	1	0	2	0	0	2	2	1	5	5	3.7	3.0	1.8	178%
Masters	30	29	49	41	47	47	43	56	38	39	44.3	44.6	41.9	-7%
Doctorate	12	17	9	9	14	12	21	20	21	16	19.0	18.0	15.1	6%
All	92	98	115	107	113	110	136	147	111	125	127.7	125.8	115.4	8%
NURSING, SCHOOL OF														
Bachelors	14	14	61	76	76	80	102	107	148	167	140.7	120.8	84.5	98%
Masters	69	58	58	69	59	75	57	74	78	107	86.3	78.2	70.4	52%
Doctorate	2	1	3	1	5	3	10	22	19	25	22.0	15.8	9.1	175%
All	85	73	122	146	140	158	169	203	245	299	249.0	214.8	164.0	82%
PHARMACY, SCHOOL OF														
Bachelors	0	6	5	6	10	5	8	7	14	9	10.0	8.6	7.0	29%
First Profes.	68	60	62	77	77	72	70	111	113	106	110.0	94.4	81.6	30%
Masters	10	3	1	3	3	1	1	1	0	0	0.3	0.6	2.3	-100%
All	78	69	68	86	90	78	79	119	127	115	120.3	103.6	90.9	27%

Table 2.3: Degrees Awarded by Colleges at the Missouri University of Science and Technology

This information is no longer provided since Missouri S&T eliminated schools and colleges in FY 2008.

Table 2.4: Degrees Awarded by Colleges at the University of Missouri - St. Louis

COLLEGE/DEGREE	FY 2003	FY 2004	FY 2005	FY 2006	FY 2007	FY 2008	FY 2009	FY 2010	FY 2011	FY 2012	3-Year	Average 5-Year	10-Year	Change in FY12 relative to the 10-Year Avg.
ARTS AND SCIENCES, COLLEGE OF														
Bachelors	632	644	640	674	759	734	749	763	772	763	766.0	756.2	713.0	7%
Grad. Certif.	19	18	25	26	34	18	30	35	20	30	28.3	26.6	25.5	18%
Masters	187	188	208	201	211	214	215	241	241	243	241.7	230.8	214.9	13%
Doctorate	20	23	27	30	30	24	34	35	24	33	30.7	30.0	28.0	18%
All	858	873	900	931	1,034	990	1,028	1,074	1,057	1,069	1,066.7	1,043.6	981.4	9%
BUSINESS ADMINISTRATION, COLLEGE OF														
Bachelors	566	612	532	542	579	598	573	545	579	505	543.0	560.0	563.1	-10%
Grad. Certif.	46	17	21	16	16	18	12	11	13	19	14.3	14.6	18.9	1%
Masters	135	117	145	133	163	163	210	162	171	204	179.0	182.0	160.3	27%
Doctorate	0	0	0	0	1	1	0	2	1	2	1.7	1.2	0.7	186%
All	747	746	698	691	759	780	795	720	764	730	738.0	757.8	743.0	-2%
EDUCATION, COLLEGE OF														
Bachelors	271	289	276	247	260	230	271	229	256	223	236.0	241.8	255.2	-13%
Grad. Certif.		5	6	11	8	1	4	5	10	21	12.0	8.2	N/A	
Masters	239	267	333	302	252	255	262	287	340	301	309.3	289.0	283.8	6%
Ed. Specialist			3	29	31	28	42	31	22	26	26.3	29.8	N/A	
Doctorate	20	15	21	24	18	27	27	24	21	33	26.0	26.4	23.0	43%
All	530	576	639	613	569	541	606	576	649	604	609.7	595.2	590.3	2%
FINE ARTS AND COMMUNICATION, COLLEGE OF														
Bachelors	205	174	219	219	210	210	188	214	223	207	214.7	208.4	206.9	0%
Masters		1	7	16	19	26	14	22	17	28	22.3	21.4	N/A	
All	205	175	226	235	229	236	202	236	240	235	237.0	229.8	221.9	6%
NURSING, COLLEGE OF														
Bachelors	115	123	152	160	163	186	181	200	201	206	202.3	194.8	168.7	22%
Grad. Certif.						5	1	1	4	2	2.3	2.6	N/A	
Masters	34	64	60	46	48	51	43	41	72	63	58.7	54.0	52.2	21%
Doctorate	4	1	1	4	2	9	2	2	4	6	4.0	4.6	3.5	71%
All	153	188	213	210	213	251	227	244	281	277	267.3	256.0	225.7	23%

Table 2.4: Degrees Awarded by Colleges at the University of Missouri - St. Louis (continued)

COLLEGE/DEGREE	FY 2003	FY 2004	FY 2005	FY 2006	FY 2007	FY 2008	FY 2009	FY 2010	FY 2011	FY 2012	3-Year	Average 5-Year	10-Year	Change in FY12 relative to the 10-Year Avg.
OPTOMETRY, COLLEGE OF														
First Profes.	39	35	46	34	44	38	44	41	44	47	44.0	42.8	41.2	14%
Masters	2	1	0	0	0	0	1	2	1	0	1.0	0.8	0.7	-100%
Doctorate	1	1	2	0	1	1	0	0	0	0	0.0	0.2	0.6	-100%
All	42	37	48	34	45	39	45	43	45	47	45.0	43.8	42.5	11%
ENGINEERING PROGRAM														
Bachelors	26	42	42	33	48	46	52	56	58	58	57.3	54.0	46.1	26%
EVENING COLLEGE														
Bachelors	38	48	41								N/A	N/A	N/A	
GRADUATE SCHOOL														
Bachelors				30	20	12	4	4	3	1	2.7	4.8	N/A	
Grad. Certif.	22	14	24	24	21	22	33	30	24	24	26.0	26.6	23.8	1%
Masters	25	37	33	32	25	20	26	16	26	33	25.0	24.2	27.3	21%
All	47	51	57	86	66	54	63	50	53	58	53.7	55.6	58.5	-1%

IR&P/RS 8/12