

**The 2012-2013 Report of Degrees Awarded  
by the University of Missouri**

Randy Sade  
Assistant Research Analyst

Office of Institutional Research and Planning  
University of Missouri System

September 2013

IR&P 2013, Report 2

<http://www.umssystem.edu/ums/aa/planning/>

# The 2012-2013 Report of Degrees Awarded by the University of Missouri

## Executive Summary

This report includes graphs and tables of degrees awarded by each campus since FY 2004. The first table provides a summary of degrees by level for each campus, while the second table series gives the number of awards by the colleges of each campus. The *Department Detail Summary* reflects the number of degrees awarded by academic department. These tables also show the average number of degrees over a 3, 5, & 10-year period and the percent change in FY 2013 that is relative to the 10-year average.

The highlights of the report from Table 1 include:

- The University of Missouri System awarded a record 16,867 degrees and certificates, a 16% growth in FY 2013 relative to the 10-year average.
- Relative to the 10-year average, the number of FY 2013 doctorate degrees for the University of Missouri System increased 28%, and graduate certificates increased 85%.
- Comparing FY 2013 degrees to the 10-year averages, the most notable increases are: bachelors degrees awarded are up 17% at UM-Columbia, 17% at UM-Kansas City, and 23% at Missouri S&T; masters degrees are up 25% at Missouri S&T and 12% at UM-St. Louis; and doctorates are up 29% at UM-Columbia, 28% at UM-Kansas City, and 44% at Missouri S&T.
- First Professional degrees at UM- Columbia increased 9% and 11% at UM- Kansas City when comparing FY 2013 to the 10-year average.
- Based on the 10-year averages, Graduate Certificates continues to grow in FY 2013 with a 93% increase at UM-Columbia and an increase of 109% at Missouri S&T.

## Notes Regarding Use of the Report:

- The official annual reporting period is from July 1 to June 30 of the following calendar year. For example, FY13 includes summer and fall graduates from 2012 and the spring graduates of 2013.
- Please note the axis scale range when considering graphs. It may change from campus to campus.
- Previous year's tables may differ because tables in the report have been changed from the use of running averages to 3-, 5-, and 10-year averages.
- This report includes a 10-year average as related to FY 2013.
- Source for this report is the printed Completions Report.

## Technical Notes for Use with the Report:

### Footnotes

- Footnotes are of the utmost importance in reading tables in the appendix.

### Name Changes

- If a program name changes, the report history is changed to reflect the new name and is footnoted.
- If a degree name or description is changed, the report history is changed to the new description and is footnoted.
- If a department name changes, the report history is changed to the new description and NO footnotes are made.
- If a school or college changes, the report history is changed to the new description and NO footnotes are made.

### Program Moves

- If a program moves to another department or school, the data are reported as is – that is, report history is not changed and the new data are reported in the new department. A new footnote is added, i.e., program is moving. Eventually – when there are no more degrees for the old department, the old department is hidden in the report.
- If a program moves to another school or college, the data are reported as is – that is, report history is not changed and the new data are reported in the new school or college. A footnote is added, i.e., program is moving. Eventually – when there are no more degrees for the old program, the former program is hidden in the report.

Figure 1: Rate of Change in Total Degrees & Certificates Awarded by Campus, since 2004

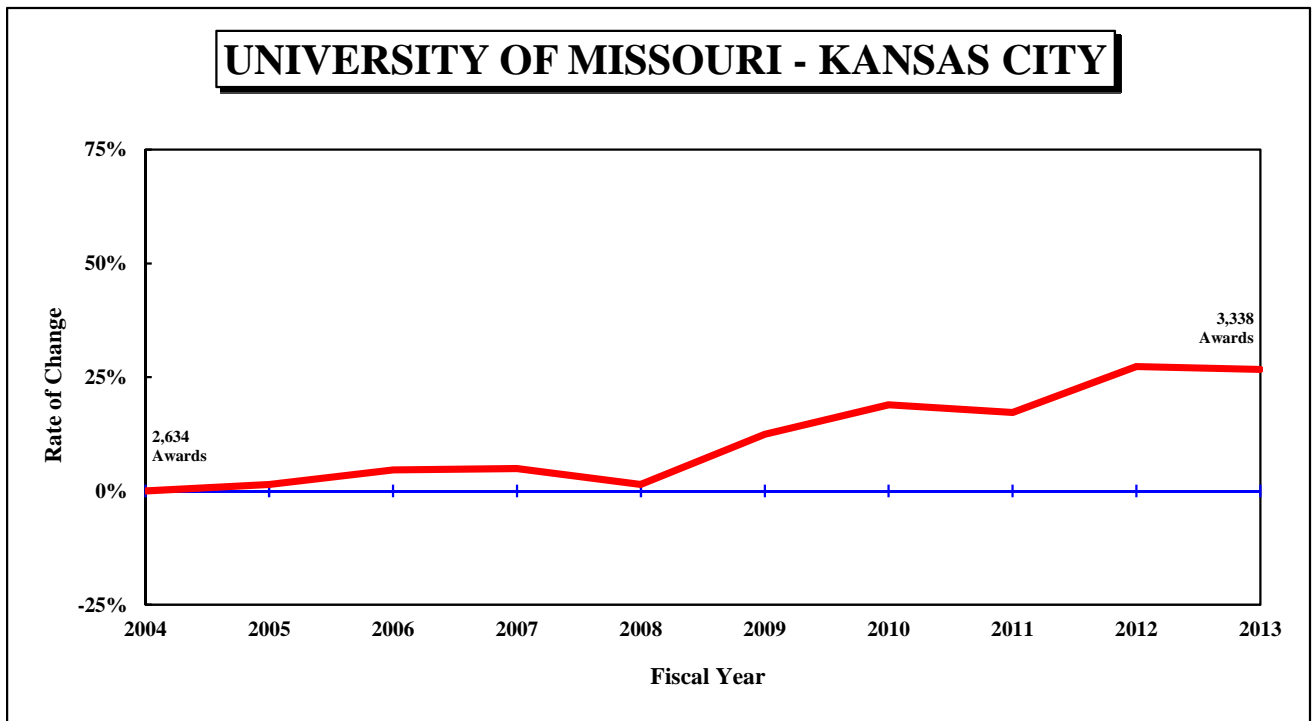
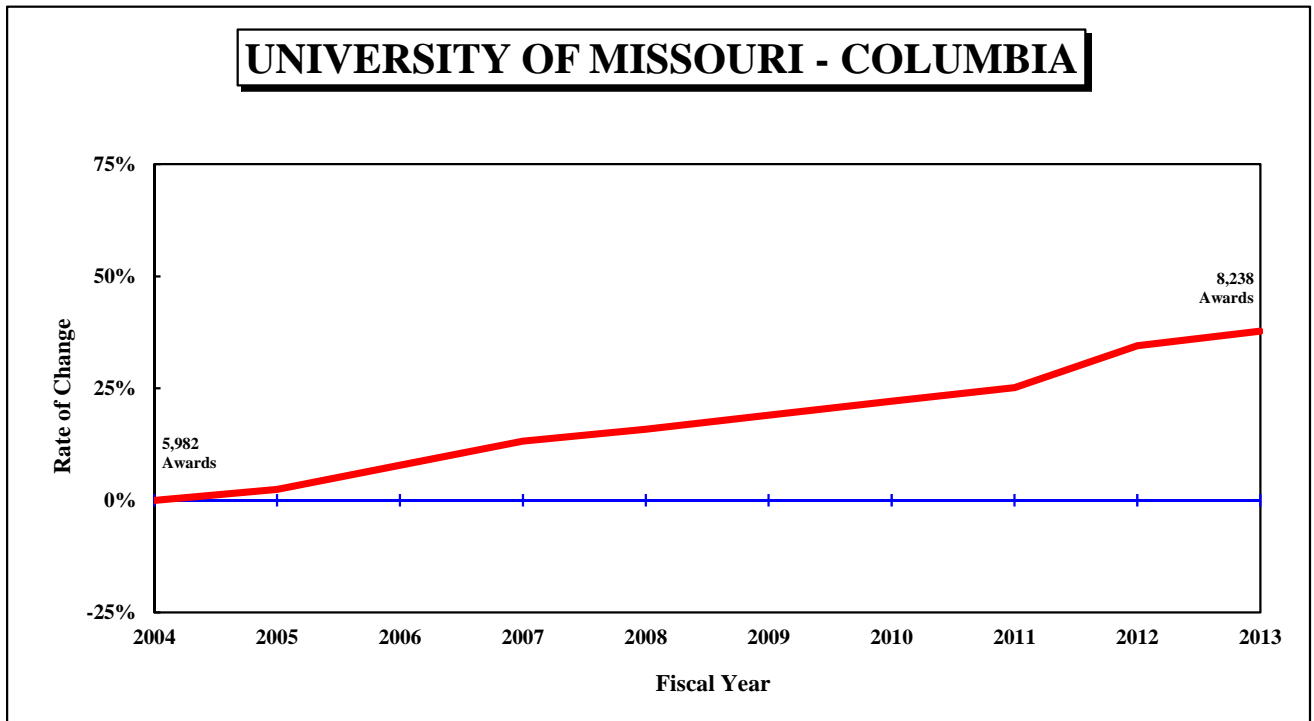


Figure 1: Rate of Change in Total Degrees & Certificates Awarded by Campus, since 2004 - Continued

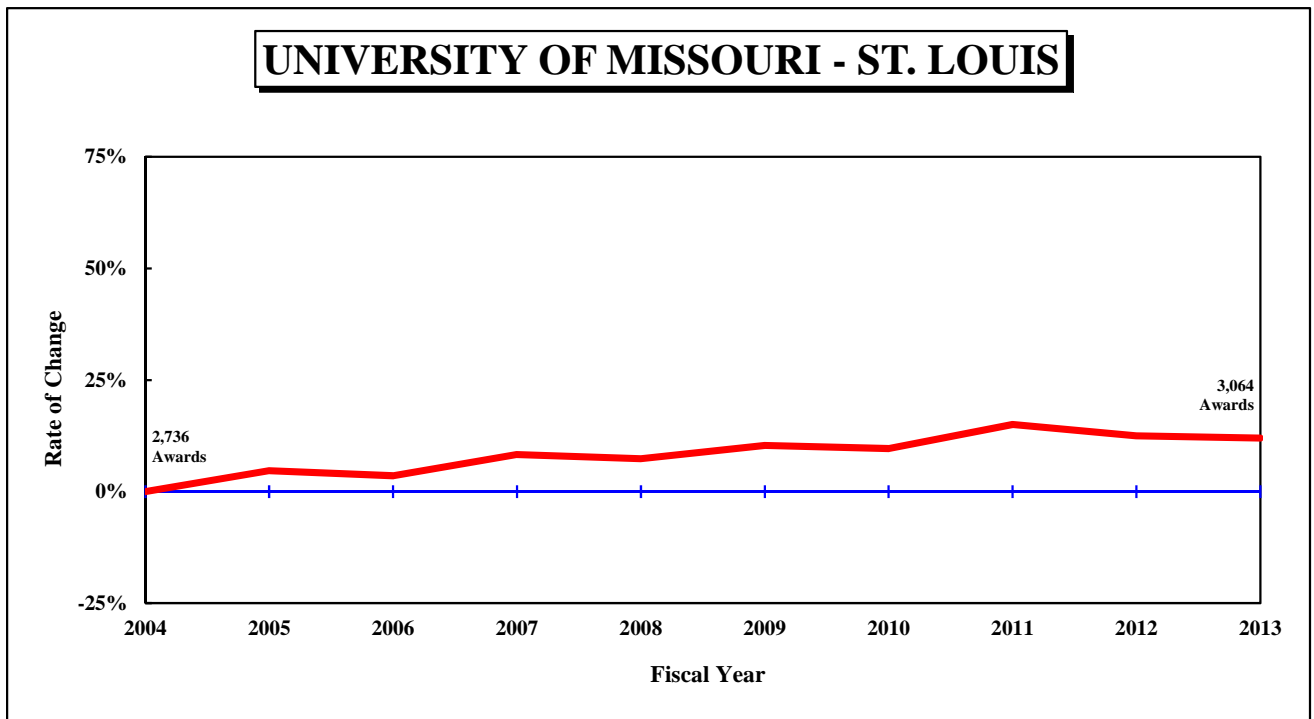
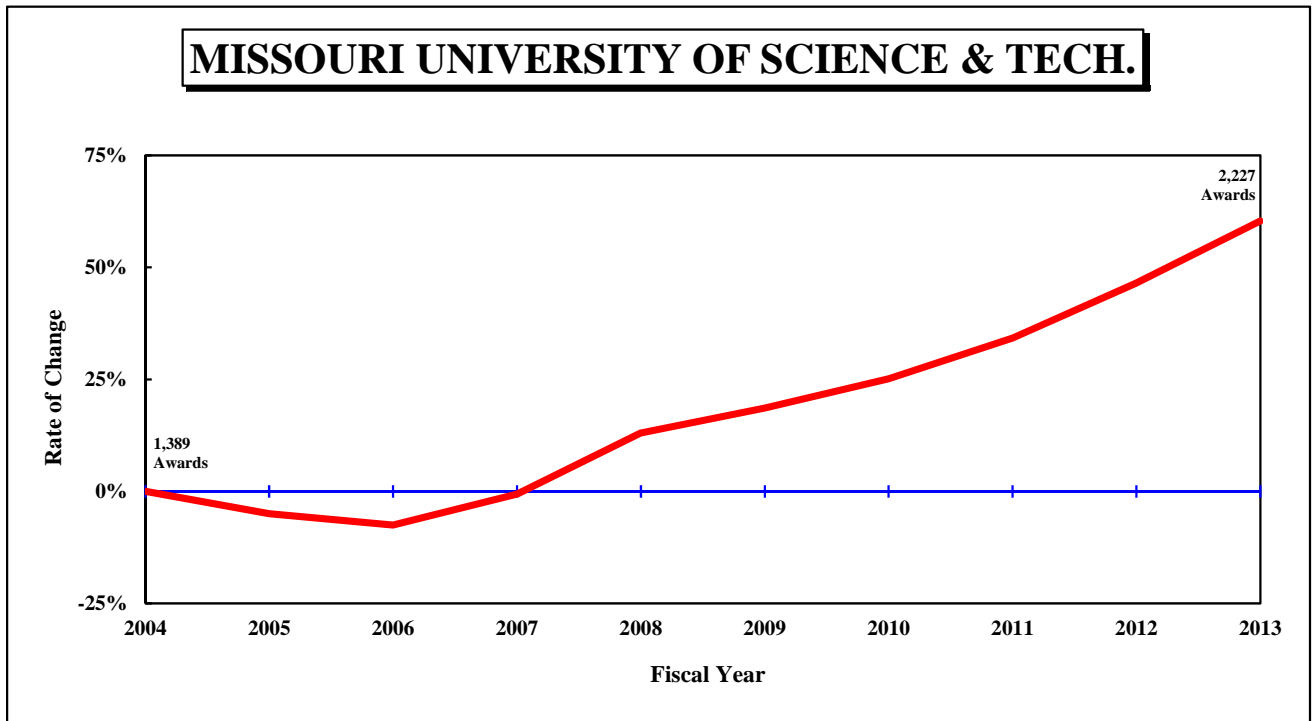


Figure 1: Rate of Change in Total Degrees & Certificates Awarded by Campus, since 2004 - Continued

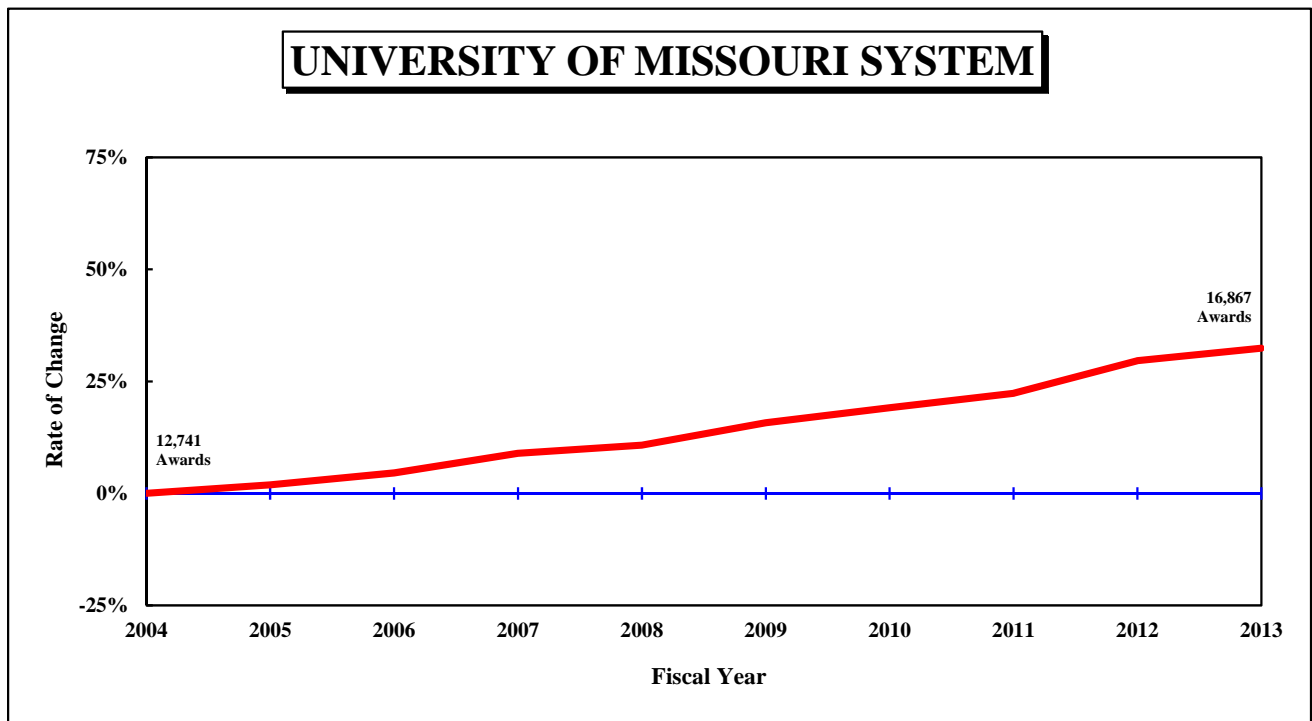


Figure 2: Rate of Change in Total Degrees Awarded by Campus, since 2004

UNIVERSITY OF MISSOURI - COLUMBIA

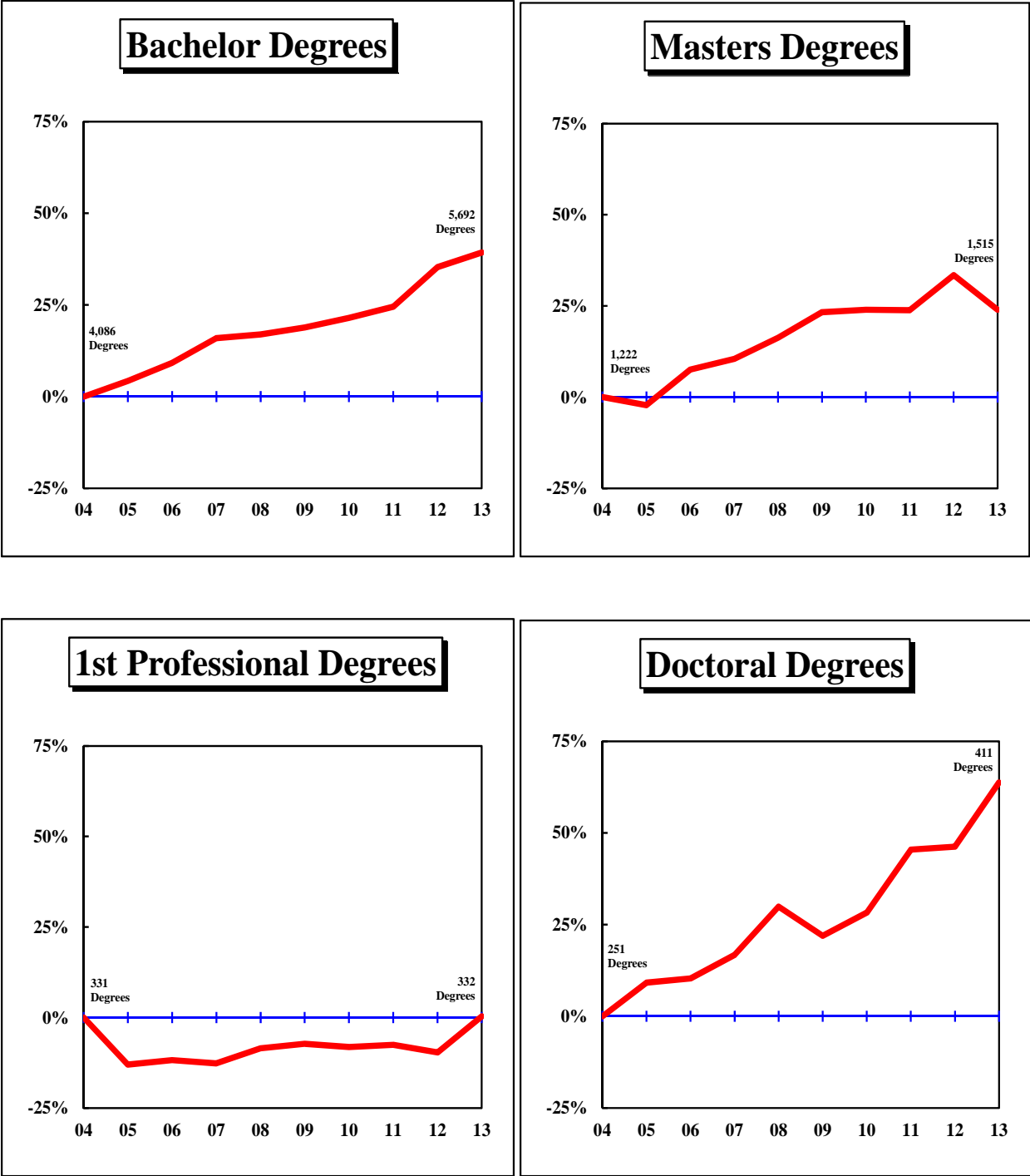


Figure 2: Rate of Change in Total Degrees Awarded by Campus, since 2004  
 - Continued

UNIVERSITY OF MISSOURI - KANSAS CITY

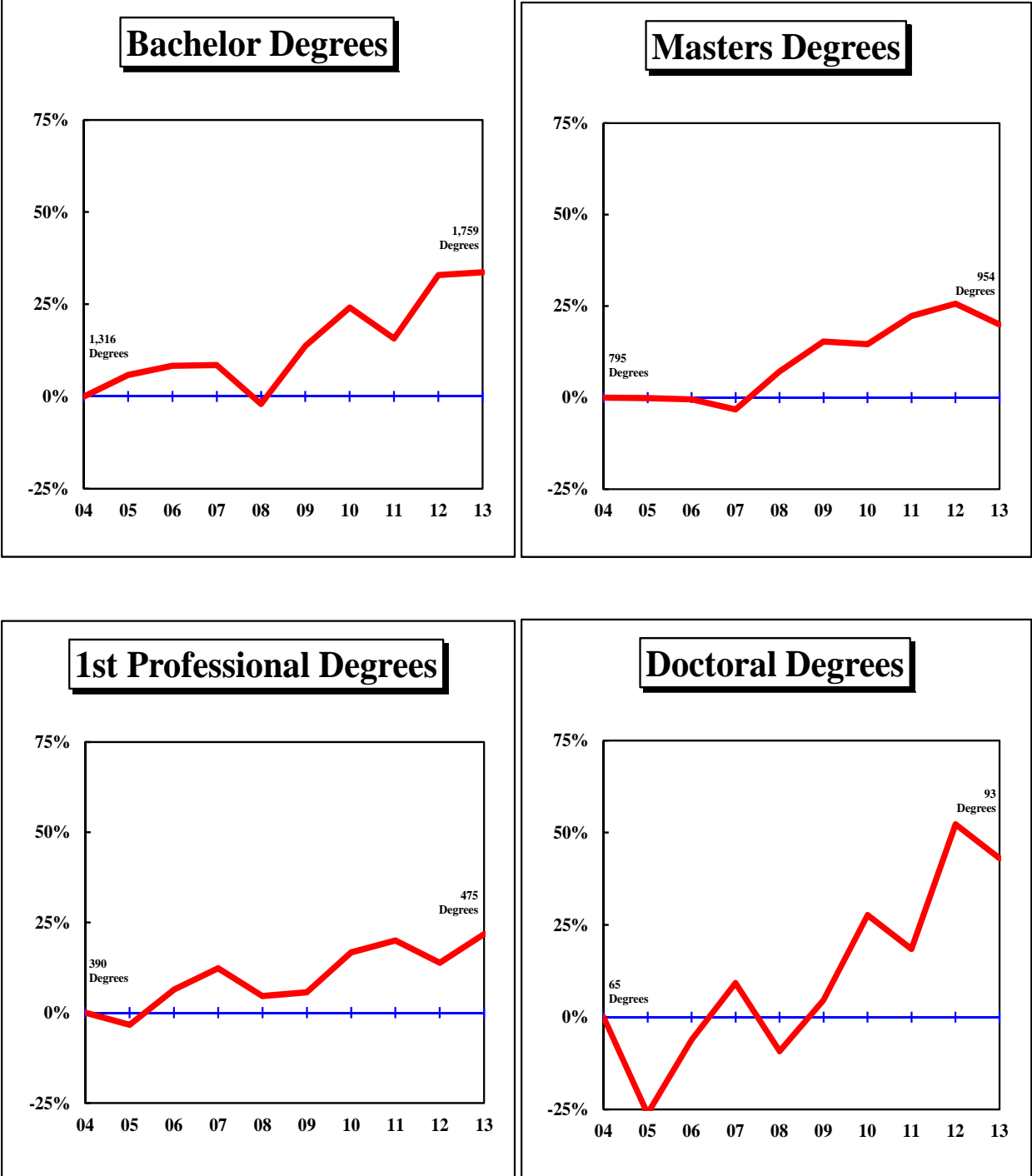




Figure 2: Rate of Change in Total Degrees Awarded by Campus, since 2004  
 - Continued

MISSOURI UNIVERSITY OF SCIENCE AND TECHNOLOGY

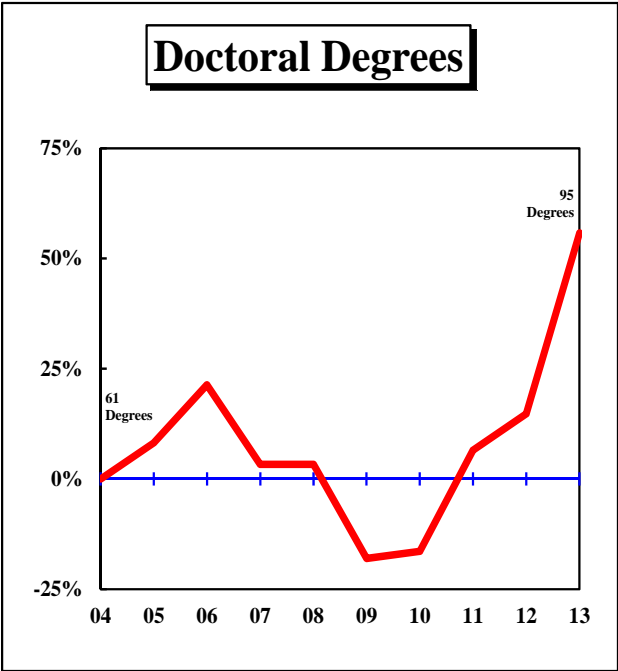
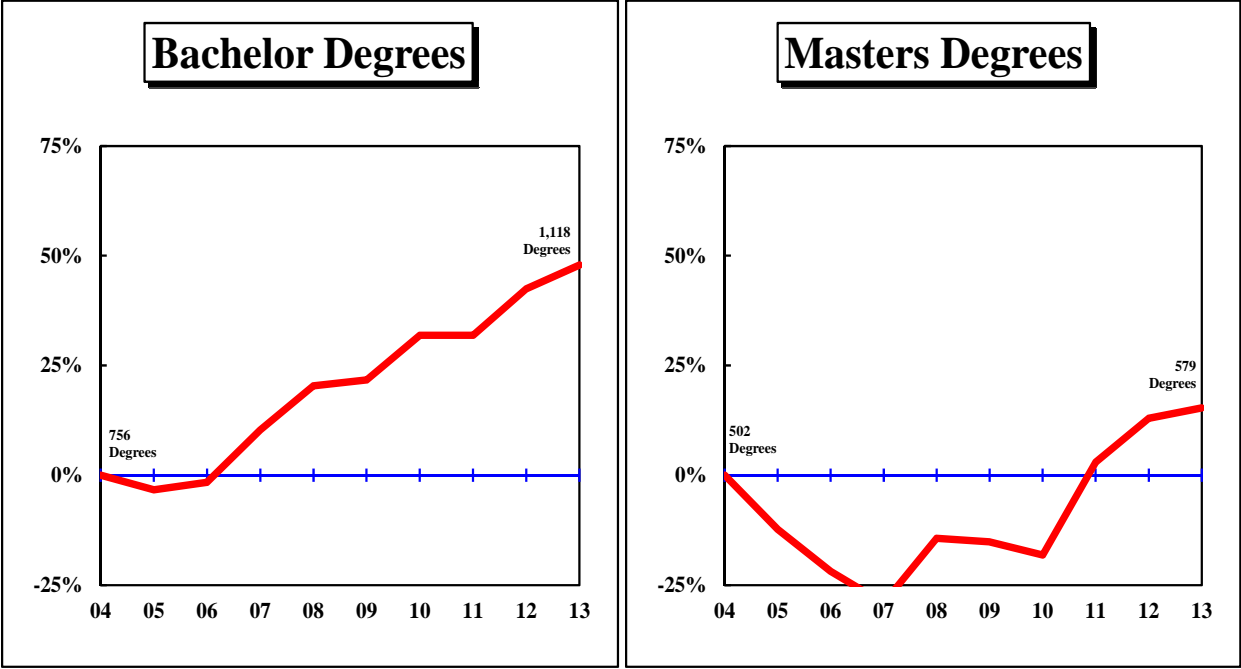


Figure 2: Rate of Change in Total Degrees Awarded by Campus, since 2004  
 - Continued

UNIVERSITY OF MISSOURI – ST. LOUIS

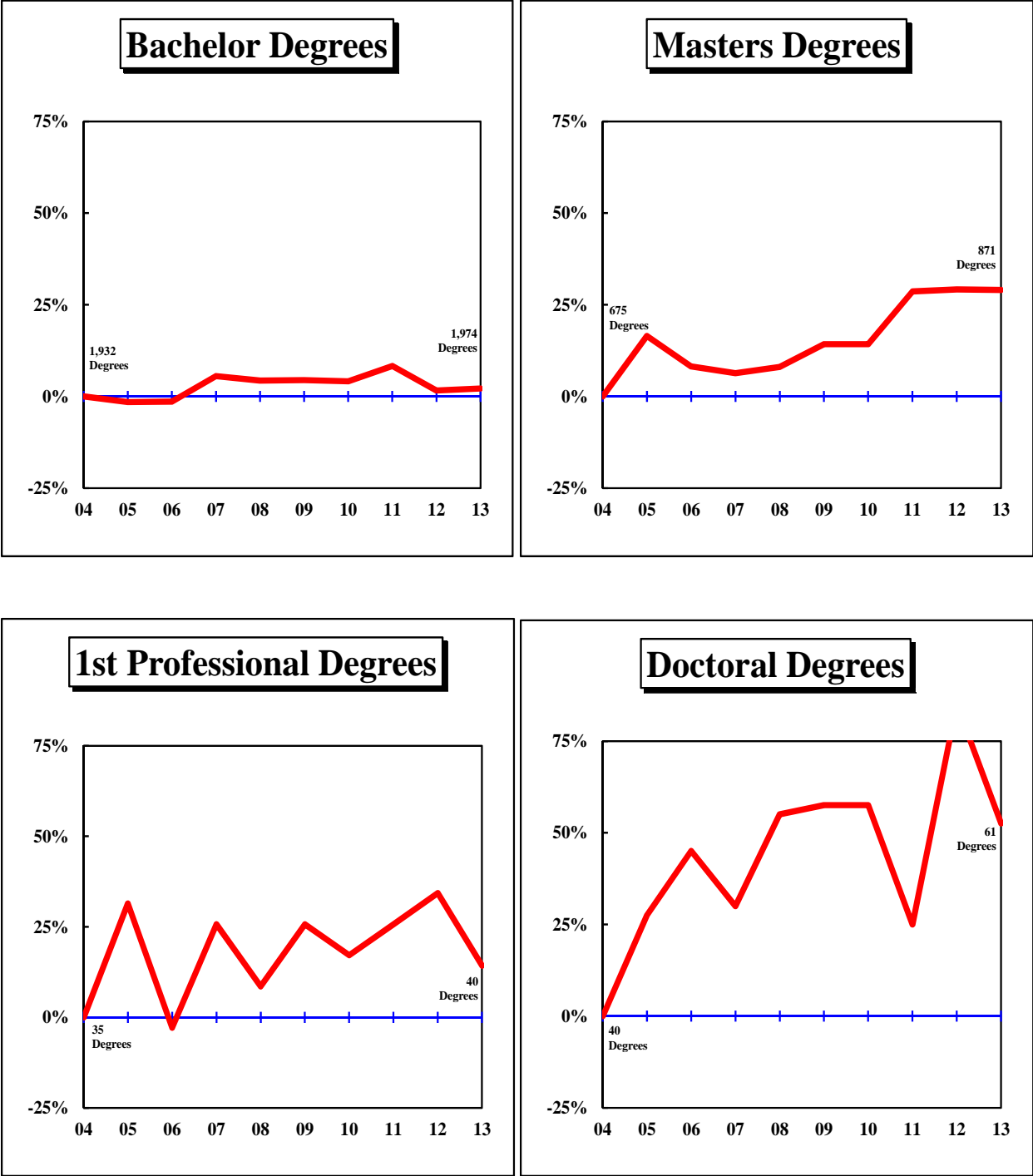


Figure 2: Rate of Change in Total Degrees Awarded by Campus, since 2004  
 - Continued

UNIVERSITY OF MISSOURI SYSTEM

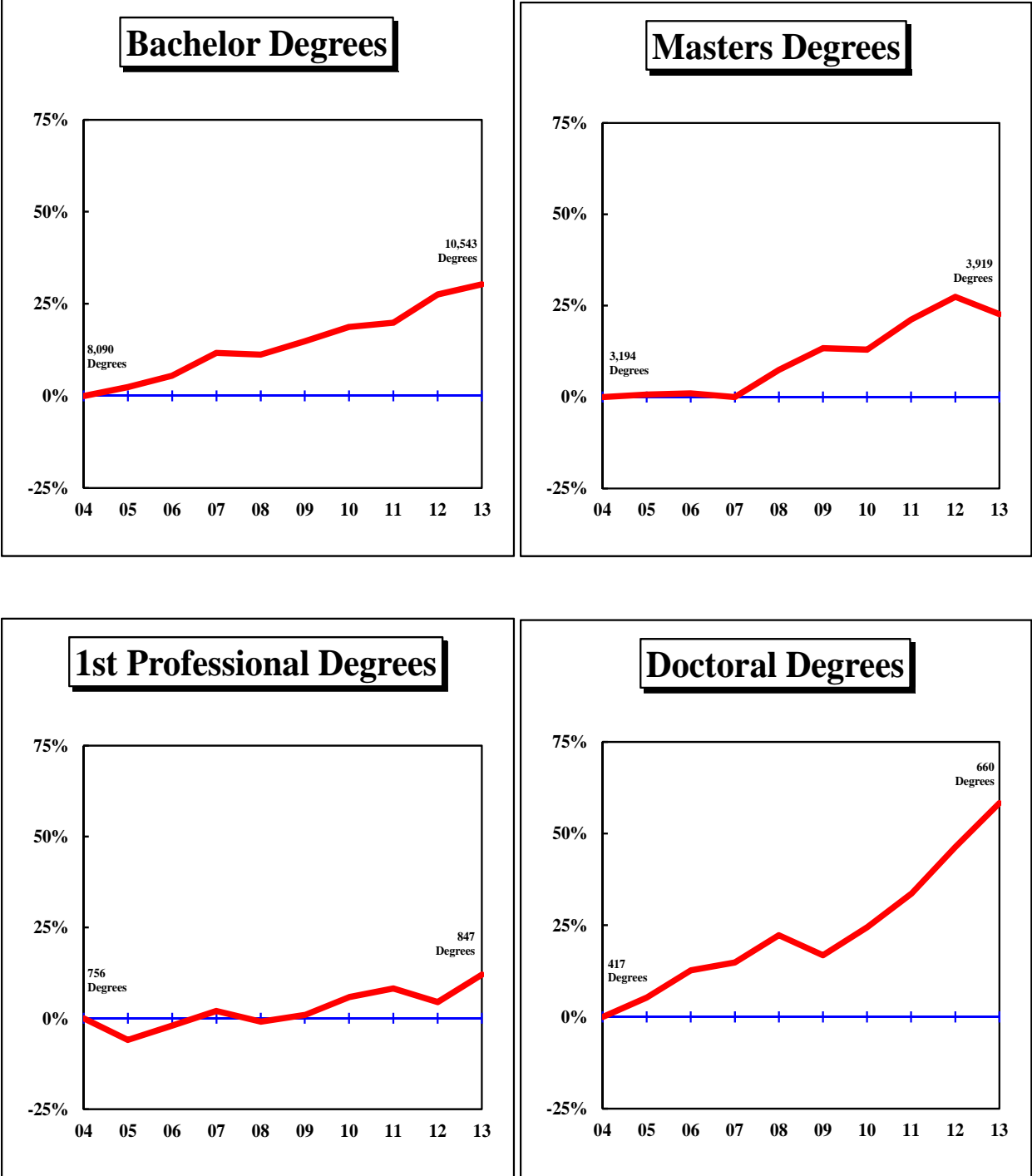


Table 1. Degrees and Certificates Awarded at the University Of Missouri, July 1, 2003 through June 30, 2013

DEGREE	FY 2004	FY 2005	FY 2006	FY 2007	FY 2008	FY 2009	FY 2010	FY 2011	FY 2012	FY 2013	3-Year	Average 5-Year	10-Year	Change in FY13 relative to the 10-Year Avg.
<b>UNIVERSITY OF MISSOURI - COLUMBIA</b>														
Bachelors	4,086	4,259	4,461	4,736	4,779	4,855	4,963	5,087	5,528	5,692	5,435.7	5,225.0	4,844.6	17%
Graduate Certificate	69	79	84	68	69	88	142	162	179	225	188.7	159.2	116.5	93%
First Professional	331	288	292	289	303	307	304	306	299	332	312.3	309.6	305.1	9%
Masters	1,222	1,195	1,314	1,350	1,421	1,506	1,515	1,513	1,631	1,515	1,553.0	1,536.0	1,418.2	7%
Education Specialist	23	33	21	36	34	57	59	53	43	63	53.0	55.0	42.2	49%
Doctorate	251	274	277	293	326	306	322	365	367	411	381.0	354.2	319.2	29%
Total, All Awards	5,982	6,128	6,449	6,772	6,932	7,119	7,305	7,486	8,047	8,238	7,923.7	7,639.0	7,045.8	17%
<b>UNIVERSITY OF MISSOURI - KANSAS CITY</b>														
Bachelors	1,316	1,393	1,425	1,428	1,289	1,496	1,633	1,523	1,749	1,759	1,677.0	1,632.0	1,501.1	17%
Graduate Certificate	9	19	23	19	24	20	18	24	29	33	28.7	24.8	21.8	51%
First Professional	390	377	415	438	408	412	455	468	444	475	462.3	450.8	428.2	11%
Masters	795	794	791	769	852	917	911	972	999	954	975.0	950.6	875.4	9%
Education Specialist	59	41	41	39	40	49	33	25	35	24	28.0	33.2	38.6	-38%
Doctorate	65	48	61	71	59	68	83	77	99	93	89.7	84.0	72.4	28%
Total, All Awards	2,634	2,672	2,756	2,764	2,672	2,962	3,133	3,089	3,355	3,338	3,260.7	3,175.4	2,937.5	14%
<b>MISSOURI UNIVERSITY OF SCIENCE AND TECHNOLOGY</b>														
Undergrad. Certificate				1	3	2	1	4	2	0	2.0	1.8	N/A	
Bachelors	756	731	744	834	910	920	997	997	1,077	1,118	1,064.0	1,021.8	908.4	23%
Graduate Certificate	70	83	75	127	164	250	278	282	319	435	345.3	312.8	208.3	109%
Masters	502	440	392	356	430	426	411	517	567	579	554.3	500.0	462.0	25%
Doctorate	61	66	74	63	63	50	51	65	70	95	76.7	66.2	65.8	44%
Total, All Awards	1,389	1,320	1,285	1,381	1,570	1,648	1,738	1,865	2,035	2,227	2,042.3	1,902.6	1,645.8	35%
<b>UNIVERSITY OF MISSOURI - ST. LOUIS</b>														
Undergrad. Certificate										2	N/A	N/A	N/A	
Bachelors	1,932	1,902	1,905	2,039	2,016	2,018	2,011	2,092	1,963	1,974	2,009.7	2,011.6	1,985.2	-1%
Graduate Certificate	54	76	77	79	64	80	82	71	96	88	85.0	83.4	76.7	15%
First Professional	35	46	34	44	38	44	41	44	47	40	43.7	43.2	41.3	-3%
Masters	675	786	730	718	729	771	771	868	872	871	870.3	830.6	779.1	12%
Education Specialist		3	29	31	28	42	31	22	26	28	25.3	29.8	N/A	
Doctorate	40	51	58	52	62	63	63	50	74	61	61.7	62.2	57.4	6%
Total, All Awards	2,736	2,864	2,833	2,963	2,937	3,018	2,999	3,147	3,078	3,064	3,096.3	3,061.2	2,963.9	3%

Table 1. Degrees and Certificates Awarded at the University Of Missouri, July 1, 2003 through June 30, 2013 (continued)

DEGREE	FY 2004	FY 2005	FY 2006	FY 2007	FY 2008	FY 2009	FY 2010	FY 2011	FY 2012	FY 2013	3-Year	Average 5-Year	10-Year	Change in FY13 relative to the 10-Year Avg.
<b>UNIVERSITY OF MISSOURI SYSTEM</b>														
Undergrad. Certificate				1	3	2	1	4	2	2	2.7	2.2	N/A	
Bachelors	8,090	8,285	8,535	9,037	8,994	9,289	9,604	9,699	10,317	10,543	10,186.3	9,890.4	9,239.3	14%
Graduate Certificate	202	257	259	293	321	438	520	539	623	781	647.7	580.2	423.3	85%
First Professional	756	711	741	771	749	763	800	818	790	847	818.3	803.6	774.6	9%
Masters	3,194	3,215	3,227	3,193	3,432	3,620	3,608	3,870	4,069	3,919	3,952.7	3,817.2	3,534.7	11%
Education Specialist	82	77	91	106	102	148	123	100	104	115	106.3	118.0	104.8	10%
Doctorate	417	439	470	479	510	487	519	557	610	660	609.0	566.6	514.8	28%
Total, All Awards	12,741	12,984	13,323	13,880	14,111	14,747	15,175	15,587	16,515	16,867	16,323.0	15,778.2	14,593.0	16%

IR&P/RS 8/13

Table 2.1: Degrees and Certificates Awarded by Colleges at the University of Missouri – Columbia

COLLEGE/DEGREE	FY 2004	FY 2005	FY 2006	FY 2007	FY 2008	FY 2009	FY 2010	FY 2011	FY 2012	FY 2013	3-Year	Average 5-Year	10-Year	Change in FY13 relative to the 10-Year Avg.
<b>AGRICULTURE, FOOD, AND NATURAL RESOURCES, COLLEGE OF</b>														
Bachelors	335	306	356	344	367	391	383	400	432	491	441.0	419.4	380.5	29%
Masters	43	37	43	55	46	51	38	45	51	44	46.7	45.8	45.3	-3%
Doctorate	27	24	31	26	26	32	28	27	24	34	28.3	29.0	27.9	22%
All	405	367	430	425	439	474	449	472	507	569	516.0	494.2	453.7	25%
<b>ARTS AND SCIENCE, COLLEGE OF</b>														
Bachelors	1,578	1,549	1,633	1,775	1,725	1,741	1,744	1,812	1,961	2,046	1,939.7	1,860.8	1,756.4	16%
Masters	130	136	159	161	158	176	144	176	169	168	171.0	166.6	157.7	7%
Doctorate	94	101	100	87	108	97	104	98	119	106	107.7	104.8	101.4	5%
All	1,802	1,786	1,892	2,023	1,991	2,014	1,992	2,086	2,249	2,320	2,218.3	2,132.2	2,015.5	15%
<b>BUSINESS, COLLEGE OF</b>														
Bachelors	632	711	777	792	807	779	900	838	824	786	816.0	825.4	784.6	0%
Grad. Certif.	68	56	51	50	30	9	15	27	23	21	23.7	19.0	35.0	-40%
Masters	191	174	197	213	214	204	237	220	217	231	222.7	221.8	209.8	10%
Doctorate	8	8	6	14	6	6	4	6	10	8	8.0	6.8	7.6	5%
All	899	949	1,031	1,069	1,057	998	1,156	1,091	1,074	1,046	1,070.3	1,073.0	1,037.0	1%
<b>EDUCATION, COLLEGE OF</b>														
Bachelors	219	234	283	269	249	246	239	246	274	284	268.0	257.8	254.3	12%
Masters	412	360	438	440	450	485	502	495	532	464	497.0	495.6	457.8	1%
Ed. Specialist	23	33	21	36	34	57	59	53	43	63	53.0	55.0	42.2	49%
Doctorate	70	73	62	84	87	87	74	84	79	117	93.3	88.2	81.7	43%
All	724	700	804	829	820	875	874	878	928	928	911.3	896.6	836.0	11%
<b>ENGINEERING, COLLEGE OF</b>														
Bachelors	359	378	343	383	368	386	398	422	518	472	470.7	439.2	402.7	17%
Masters	97	87	107	60	93	90	78	109	100	120	109.7	99.4	94.1	28%
Doctorate	16	24	33	39	36	24	24	44	32	32	36.0	31.2	30.4	5%
All	472	489	483	482	497	500	500	575	650	624	616.3	569.8	527.2	18%
<b>HEALTH PROFESSIONS, SCHOOL OF</b>														
Bachelors	96	122	113	138	153	155	176	242	345	426	337.7	268.8	196.6	117%
Masters	39	62	67	56	96	82	48	40	55	51	48.7	55.2	59.6	-14%
Doctorate	0	0	0	0	0	0	36	43	38	45	42.0	32.4	16.2	178%
All	135	184	180	194	249	237	260	325	438	522	428.3	356.4	272.4	92%

Table 2.1: Degrees and Certificates Awarded by Colleges at the University of Missouri – Columbia (continued)

COLLEGE/DEGREE	FY 2004	FY 2005	FY 2006	FY 2007	FY 2008	FY 2009	FY 2010	FY 2011	FY 2012	FY 2013	3-Year	Average 5-Year	10-Year	Change in FY13 relative to the 10-Year Avg.
<b>HUMAN ENVIRONMENTAL SCIENCES, COLLEGE OF</b>														
Bachelors	233	262	250	234	278	298	274	275	279	309	287.7	287.0	269.2	15%
Grad. Certif.			1	0	0	0	0	0	0	0	0.0	0.0	N/A	
Masters	15	35	24	15	18	35	17	30	34	28	30.7	28.8	25.1	12%
Doctorate	6	3	4	7	5	9	8	12	7	9	9.3	9.0	7.0	29%
All	254	300	279	256	301	342	299	317	320	346	327.7	324.8	301.4	15%
<b>JOURNALISM, SCHOOL OF</b>														
Bachelors	364	404	412	426	475	520	521	510	534	504	516.0	517.8	467.0	8%
Masters	64	94	70	69	91	107	112	88	111	73	90.7	98.2	87.9	-17%
Doctorate	8	10	14	5	10	9	8	12	10	8	10.0	9.4	9.4	-15%
All	436	508	496	500	576	636	641	610	655	585	616.7	625.4	564.3	4%
<b>LAW, SCHOOL OF</b>														
Grad. Certif.	0	1	18	0	21	16	37	39	26	41	35.3	31.8	19.9	106%
First Profes.	175	138	139	143	148	152	141	144	142	133	139.7	142.4	145.5	-9%
Masters	12	10	7	13	15	13	7	19	8	14	13.7	12.2	11.8	19%
All	187	149	164	156	184	181	185	202	176	188	188.7	186.4	177.2	6%
<b>MEDICINE, SCHOOL OF</b>														
First Profes.	92	89	89	87	89	85	99	93	87	98	92.7	92.4	90.8	8%
Masters	22	27	29	25	32	36	41	48	51	42	47.0	43.6	35.3	19%
Doctorate	5	7	5	8	14	10	11	7	14	13	11.3	11.0	9.4	38%
All	119	123	123	120	135	131	151	148	152	153	151.0	147.0	135.5	13%
<b>NATURAL RESOURCES, SCHOOL OF</b>														
Bachelors	104	109	99	131	113	115	96	107	113	121	113.7	110.4	110.8	9%
Masters	17	27	21	26	18	20	21	26	28	22	25.3	23.4	22.6	-3%
Doctorate	6	9	7	9	10	7	5	7	8	10	8.3	7.4	7.8	28%
All	127	145	127	166	141	142	122	140	149	153	147.3	141.2	141.2	8%
<b>NURSING, SCHOOL OF</b>														
Bachelors	134	156	166	201	187	190	190	193	211	211	205.0	199.0	183.9	15%
Masters	26	36	28	33	40	50	60	43	43	42	42.7	47.6	40.1	5%
Doctorate	3	2	4	3	4	5	3	4	4	2	3.3	3.6	3.4	-41%
All	163	194	198	237	231	245	253	240	258	255	251.0	250.2	227.4	12%

Table 2.1: Degrees and Certificates Awarded by Colleges at the University of Missouri – Columbia (continued)

COLLEGE/DEGREE	FY 2004	FY 2005	FY 2006	FY 2007	FY 2008	FY 2009	FY 2010	FY 2011	FY 2012	FY 2013	3-Year	Average 5-Year	10-Year	Change in FY13 relative to the 10-Year Avg.
<b>SOCIAL WORK, SCHOOL OF</b>														
Bachelors	32	28	29	43	57	34	42	42	37	42	40.3	39.4	38.6	9%
Masters	103	48	65	112	58	64	129	51	97	87	78.3	85.6	81.4	7%
Doctorate	0	1	0	1	4	9	4	3	2	1	2.0	3.8	2.5	-60%
All	135	77	94	156	119	107	175	96	136	130	120.7	128.8	122.5	6%
<b>VETERINARY MEDICINE, COLLEGE OF</b>														
First Profes.	64	61	64	59	66	70	64	69	70	101	80.0	74.8	68.8	47%
Masters	9	7	4	11	11	8	7	8	9	5	7.3	7.4	7.9	-37%
Doctorate	0	2	1	4	2	2	1	5	2	2	3.0	2.4	2.1	-5%
All	73	70	69	74	79	80	72	82	81	108	90.3	84.6	78.8	37%
<b>GRADUATE SCHOOL</b>														
Grad. Certif.	1	22	14	18	18	63	90	96	130	163	129.7	108.4	61.5	165%
Masters	42	55	55	61	81	85	74	115	126	124	121.7	104.8	81.8	52%
Doctorate	8	10	10	6	14	9	12	13	18	24	18.3	15.2	12.4	94%
All	51	87	79	85	113	157	176	224	274	311	269.7	228.4	155.7	100%



Table 2.2: Degrees and Certificates Awarded by Colleges at the University of Missouri - Kansas City

COLLEGE/DEGREE	FY	FY	FY	FY	FY	FY	FY	FY	FY	FY	3-Year	Average		Change in FY13 relative to the 10-Year Avg.
	2004	2005	2006	2007	2008	2009	2010	2011	2012	2013		5-Year	10-Year	
<b>ARTS AND SCIENCES, COLLEGE OF</b>														
Bachelors	755	795	805	778	713	829	931	813	934	877	874.7	876.8	823.0	7%
Grad. Certif.	0	0	0	0	0	0	0	0	1	1	0.7	0.4	0.2	400%
Masters	145	150	189	161	198	187	173	210	252	184	215.3	201.2	184.9	0%
Doctorate	1	0	4	4	2	4	4	2	3	2	2.3	3.0	2.6	-23%
All	901	945	998	943	913	1,020	1,108	1,025	1,190	1,064	1,093.0	1,081.4	1,010.7	5%
<b>BIOLOGICAL SCIENCES, SCHOOL OF</b>														
Bachelors	49	57	64	74	58	61	84	71	95	101	89.0	82.4	71.4	41%
Masters	13	21	16	19	18	20	23	21	26	26	24.3	23.2	20.3	28%
All	62	78	80	93	76	81	107	92	121	127	113.3	105.6	91.7	38%
<b>COMPUTING AND ENGINEERING, SCHOOL OF</b>														
Bachelors	146	109	93	89	80	86	95	82	103	118	101.0	96.8	100.1	18%
Grad. Certif.										1	N/A	N/A	N/A	
Masters	74	85	75	89	112	144	135	194	121	122	145.7	143.2	115.1	6%
All	220	194	168	178	192	230	230	276	224	241	247.0	240.2	215.3	12%
<b>DENTISTRY, SCHOOL OF</b>														
Bachelors	28	24	28	31	28	27	31	34	35	36	35.0	32.6	30.2	19%
Grad. Certif.	9	17	23	19	22	17	17	17	17	17	17.0	17.0	17.5	-3%
First Profes.	78	79	92	101	100	102	96	98	99	106	101.0	100.2	95.1	11%
Masters	6	2	0	3	4	9	7	9	9	10	9.3	8.8	5.9	69%
All	121	122	143	154	154	155	151	158	160	169	162.3	158.6	148.7	14%
<b>EDUCATION, SCHOOL OF</b>														
Bachelors	119	107	107	124	98	118	116	107	113	108	109.3	112.4	111.7	-3%
Masters	223	200	196	156	147	184	152	131	144	156	143.7	153.4	168.9	-8%
Ed. Specialist	59	41	41	39	40	49	33	25	35	24	28.0	33.2	38.6	-38%
Doctorate	13	7	4	5	10	9	5	4	13	9	8.7	8.0	7.9	14%
All	414	355	348	324	295	360	306	267	305	297	289.7	307.0	327.1	-9%
<b>GRADUATE STUDIES, SCHOOL OF</b>														
Grad. Certif.						1	0	2	5	2	3.0	2.0	N/A	
Doctorate	33	29	43	43	32	24	32	31	42	45	39.3	34.8	35.4	27%
All	33	29	43	43	32	25	32	33	47	47	42.3	36.8	36.4	29%

Table 2.2: Degrees and Certificates Awarded by Colleges at the University of Missouri - Kansas City (continued)

COLLEGE/DEGREE	FY 2004	FY 2005	FY 2006	FY 2007	FY 2008	FY 2009	FY 2010	FY 2011	FY 2012	FY 2013	3-Year	Average 5-Year	10-Year	Change in FY13 relative to the 10-Year Avg.
<b>LAW, SCHOOL OF</b>														
First Profes.	159	153	156	176	150	153	156	156	150	159	155.0	154.8	156.8	1%
Masters	22	15	21	19	22	32	32	30	18	33	27.0	29.0	24.4	35%
All	181	168	177	195	172	185	188	186	168	192	182.0	183.8	181.2	6%
<b>MANAGEMENT, SCHOOL OF</b>														
Bachelors	147	180	189	194	178	195	192	207	228	231	222.0	210.6	194.1	19%
Masters	222	213	181	213	228	240	254	257	276	263	265.3	258.0	234.7	12%
Doctorate									0	1	N/A	N/A	N/A	
All	369	393	370	407	406	435	446	464	504	495	487.7	468.8	428.9	15%
<b>MEDICINE, SCHOOL OF</b>														
Grad. Certif.							0	0	0	1	5	2.0	1.2	N/A
First Profes.	93	83	90	84	86	87	92	101	89	88	92.7	91.4	89.3	-1%
Masters					0	0	4	4	7	12	7.7	5.4	N/A	
All	93	83	90	84	86	87	96	105	97	105	102.3	98.0	92.6	13%
<b>MUSIC AND DANCE, CONSERVATORY OF</b>														
Bachelors	52	55	57	52	49	70	70	47	65	64	58.7	63.2	58.1	10%
Grad. Certif.	0	2	0	0	2	2	1	5	5	7	5.7	4.0	2.4	192%
Masters	29	49	41	47	47	43	56	38	39	42	39.7	43.6	43.1	-3%
Doctorate	17	9	9	14	12	21	20	21	16	21	19.3	19.8	16.0	31%
All	98	115	107	113	110	136	147	111	125	134	123.3	130.6	119.6	12%
<b>NURSING AND HEALTH STUDIES, SCHOOL OF</b>														
Bachelors	14	61	76	76	80	102	107	148	167	217	177.3	148.2	104.8	107%
Masters	58	58	69	59	75	57	74	78	107	106	97.0	84.4	74.1	43%
Doctorate	1	3	1	5	3	10	22	19	25	15	19.7	18.2	10.4	44%
All	73	122	146	140	158	169	203	245	299	338	294.0	250.8	189.3	79%
<b>PHARMACY, SCHOOL OF</b>														
Bachelors	6	5	6	10	5	8	7	14	9	7	N/A	N/A	N/A	
First Profes.	60	62	77	77	72	70	111	113	106	122	113.7	104.4	87.0	40%
Masters	3	1	3	3	1	1	1	0	0		N/A	N/A	N/A	
All	69	68	86	90	78	79	119	127	115	129	123.7	113.8	96.0	34%

**Table 2.3: Degrees and Certificates Awarded by Colleges at the Missouri University of Science and Technology**

This information is no longer provided since Missouri S&T eliminated schools and colleges in FY 2008.

Table 2.4: Degrees and Certificates Awarded by Colleges at the University of Missouri - St. Louis

COLLEGE/DEGREE	FY	FY	FY	FY	FY	FY	FY	FY	FY	FY	3-Year	Average		Change in FY13 relative to the 10-Year Avg.
	2004	2005	2006	2007	2008	2009	2010	2011	2012	2013		5-Year	10-Year	
<b>ARTS AND SCIENCES, COLLEGE OF</b>														
U-Grad. Certif.										2	N/A	N/A	N/A	
Bachelors	644	640	674	759	734	749	763	772	763	791	775.3	767.6	728.9	9%
Grad. Certif.	18	25	26	34	18	30	35	20	30	27	25.7	28.4	26.3	3%
Masters	188	208	201	211	214	215	241	241	243	237	240.3	235.4	219.9	8%
Doctorate	23	27	30	30	24	34	35	24	33	29	28.7	31.0	28.9	0%
All	873	900	931	1,034	990	1,028	1,074	1,057	1,069	1,086	1,070.7	1,062.8	1,004.2	8%
<b>BUSINESS ADMINISTRATION, COLLEGE OF</b>														
Bachelors	612	532	542	579	598	573	545	579	505	440	508.0	528.4	550.5	-20%
Grad. Certif.	17	21	16	16	18	12	11	13	19	7	13.0	12.4	15.0	-53%
Masters	117	145	133	163	163	210	162	171	204	189	188.0	187.2	165.7	14%
Doctorate	0	0	0	1	1	0	2	1	2	0	1.0	1.0	0.7	-100%
All	746	698	691	759	780	795	720	764	730	636	710.0	729.0	731.9	-13%
<b>EDUCATION, COLLEGE OF</b>														
Bachelors	289	276	247	260	230	271	229	256	223	234	237.7	242.6	251.5	-7%
Grad. Certif.	5	6	11	8	1	4	5	10	21	21	17.3	12.2	9.2	128%
Masters	267	333	302	252	255	262	287	340	301	336	325.7	305.2	293.5	14%
Ed. Specialist		3	29	31	28	42	31	22	26	28	25.3	29.8	N/A	
Doctorate	15	21	24	18	27	27	24	21	33	24	26.0	25.8	23.4	3%
All	576	639	613	569	541	606	576	649	604	643	632.0	615.6	601.6	7%
<b>FINE ARTS AND COMMUNICATION, COLLEGE OF</b>														
Bachelors	174	219	219	210	210	188	214	223	207	225	218.3	211.4	208.9	8%
Masters	1	7	16	19	26	14	22	17	28	4	16.3	17.0	15.4	-74%
All	175	226	235	229	236	202	236	240	235	229	234.7	228.4	224.3	2%
<b>NURSING, COLLEGE OF</b>														
Bachelors	123	152	160	163	186	181	200	201	206	224	210.3	202.4	179.6	25%
Grad. Certif.					5	1	1	4	2	2	2.7	2.0	N/A	
Masters	64	60	46	48	51	43	41	72	63	79	71.3	59.6	56.7	39%
Doctorate	1	1	4	2	9	2	2	4	6	7	5.7	4.2	3.8	84%
All	188	213	210	213	251	227	244	281	277	312	290.0	268.2	241.6	29%

Table 2.4: Degrees and Certificates Awarded by Colleges at the University of Missouri - St. Louis (continued)

COLLEGE/DEGREE	FY 2004	FY 2005	FY 2006	FY 2007	FY 2008	FY 2009	FY 2010	FY 2011	FY 2012	FY 2013	3-Year	Average 5-Year	10-Year	Change in FY13 relative to the 10-Year Avg.
<b>OPTOMETRY, COLLEGE OF</b>														
First Profes.	35	46	34	44	38	44	41	44	47	40	43.7	43.2	41.3	-3%
Masters	1	0	0	0	0	1	2	1	0	1	N/A	N/A	N/A	
Doctorate	1	2	0	1	1	0	0	0	0	1	N/A	N/A	N/A	
All	37	48	34	45	39	45	43	45	47	42	44.7	44.4	42.5	-1%
<b>ENGINEERING PROGRAM</b>														
Bachelors	42	42	33	48	46	52	56	58	58	58	58.0	56.4	49.3	18%
<b>EVENING COLLEGE</b>														
Bachelors	48	41									N/A	N/A	N/A	
<b>GRADUATE SCHOOL</b>														
Bachelors			30	20	12	4	4	3	1	2	2.0	2.8	N/A	
Grad. Certif.	14	24	24	21	22	33	30	24	24	31	26.3	28.4	24.7	26%
Masters	37	33	32	25	20	26	16	26	33	25	28.0	25.2	27.3	-8%
All	51	57	86	66	54	63	50	53	58	58	56.3	56.4	59.6	-3%