

**The 2013-2014 Report of Degrees Awarded  
by the University of Missouri**

Randy Sade  
Research Analyst

Office of Institutional Research and Planning  
University of Missouri System

September 2014

IR&P 2014, Report 4

<http://www.umsystem.edu/ums/aa/planning/>

# The 2013-2014 Report of Degrees Awarded by the University of Missouri

## Executive Summary

This report includes graphs and tables of degrees awarded by each campus since FY 2005. The first table provides a summary of degrees by level for each campus, while the second table series gives the number of awards by the colleges of each campus. The *Department Detail Summary* reflects the number of degrees awarded by academic department. These tables also show the average number of degrees over a 3, 5, & 10-year period and the percent change in FY 2014 that is relative to the 10-year average.

The highlights of the report from the Table 1 series include:

- The University of Missouri System awarded a record 17,099 degrees and certificates, a 14% growth in FY 2014 relative to the 10-year average.
- Relative to the 10-year average, the number of FY 2014 doctorate degrees for the University of Missouri System increased 19%, and graduate certificates increased 55%.
- Comparing FY 2014 degrees to the 10-year averages, the most notable increases are: bachelors degrees awarded are up 17% at UM-Columbia, 17% at UM-Kansas City, and 20% at Missouri S&T; masters degrees are up 18% at Missouri S&T and 7% at UM-St. Louis; and doctorates are up 17% at UM-Columbia, 50% at UM-Kansas City, and 7% at UM-St. Louis.
- First Professional degrees at UM- Columbia increased 11% and 5% at UM- Kansas City when comparing FY 2014 to the 10-year average.
- Based on the 10-year averages, Graduate Certificates continues to grow in FY 2014 with a 71% increase at UM-Columbia, 36% increase at UM-Kansas City, and an increase of 66% at Missouri S&T.

## Notes Regarding Use of the Report:

- The official annual reporting period is from July 1 to June 30 of the following calendar year. For example, FY14 includes summer and fall graduates from 2013 and the spring graduates of 2014.
- Please note the axis scale range when considering graphs. It may change from campus to campus.
- Previous year's tables may differ because tables in the report have been changed from the use of running averages to 3-, 5-, and 10-year averages.
- This report includes a 10-year average as related to FY 2014.
- Source for this report is the printed Completions Report.

## Technical Notes for Use with the Report:

### Footnotes

- Footnotes are of the utmost importance in reading tables in the appendix.

### Name Changes

- If a program name changes, the report history is changed to reflect the new name and is footnoted.
- If a degree name or description is changed, the report history is changed to the new description and is footnoted.
- If a department name changes, the report history is changed to the new description and NO footnotes are made.
- If a school or college changes, the report history is changed to the new description and NO footnotes are made.

### Program Moves

- If a program moves to another department or school, the data are reported as is – that is, report history is not changed and the new data are reported in the new department. A new footnote is added, i.e., program is moving. Eventually – when there are no more degrees for the old department, the old department is hidden in the report.
- If a program moves to another school or college, the data are reported as is – that is, report history is not changed and the new data are reported in the new school or college. A footnote is added, i.e., program is moving. Eventually – when there are no more degrees for the old program, the former program is hidden in the report.

Figure 1.0: Rate of Change in Total Degrees & Certificates Awarded for the University of Missouri System, since 2005

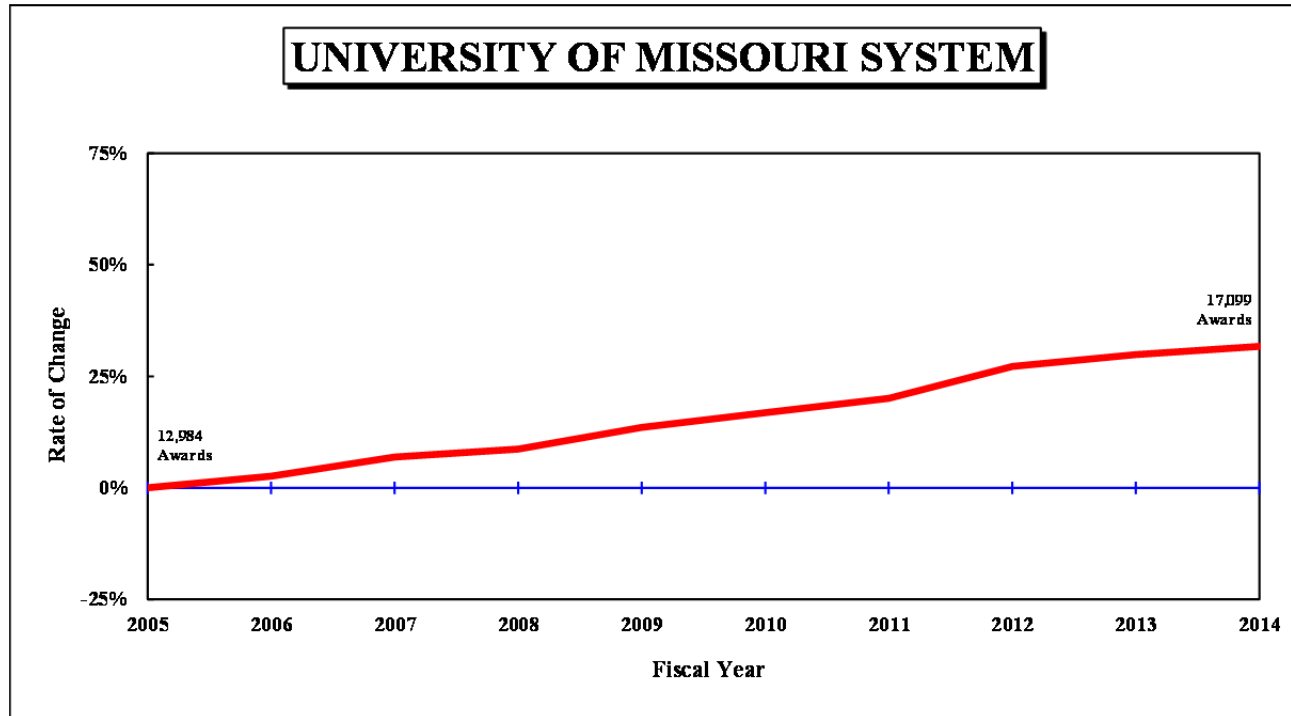


Table 1.0: Degrees and Certificates Awarded for the University of Missouri System, July 1, 2004 through June 30, 2014

DEGREE	FY	FY	FY	FY	FY	FY	FY	FY	FY	FY	3-Year	Average 5-Year	10-Year	Change in FY14 relative to the 10-Year Avg.
	2005	2006	2007	2008	2009	2010	2011	2012	2013	2014				
Undergrad. Certificate			1	3	2	1	4	2	2	23	9.0	6.4	N/A	
Bachelors	8,285	8,535	9,037	8,994	9,289	9,604	9,699	10,317	10,543	10,733	10,531.0	10,179.2	9,503.6	13%
Graduate Certificate	257	259	293	321	438	520	539	623	781	740	714.7	640.6	477.1	55%
First Professional	711	741	771	749	763	800	818	790	847	837	824.7	818.4	782.7	7%
Masters	3,215	3,227	3,193	3,432	3,620	3,608	3,870	4,069	3,919	4,013	4,000.3	3,895.8	3,616.6	11%
Education Specialist	77	91	106	102	148	123	100	104	115	113	110.7	111.0	107.9	5%
Doctorate	439	470	479	510	487	519	557	610	660	640	636.7	597.2	537.1	19%
<b>Total, All Awards</b>	<b>12,984</b>	<b>13,323</b>	<b>13,880</b>	<b>14,111</b>	<b>14,747</b>	<b>15,175</b>	<b>15,587</b>	<b>16,515</b>	<b>16,867</b>	<b>17,099</b>	<b>16,827.0</b>	<b>16,248.6</b>	<b>15,028.8</b>	<b>14%</b>

Figure 1.1: Rate of Change in Total Degrees & Certificates Awarded at the University of Missouri–Columbia, since 2005

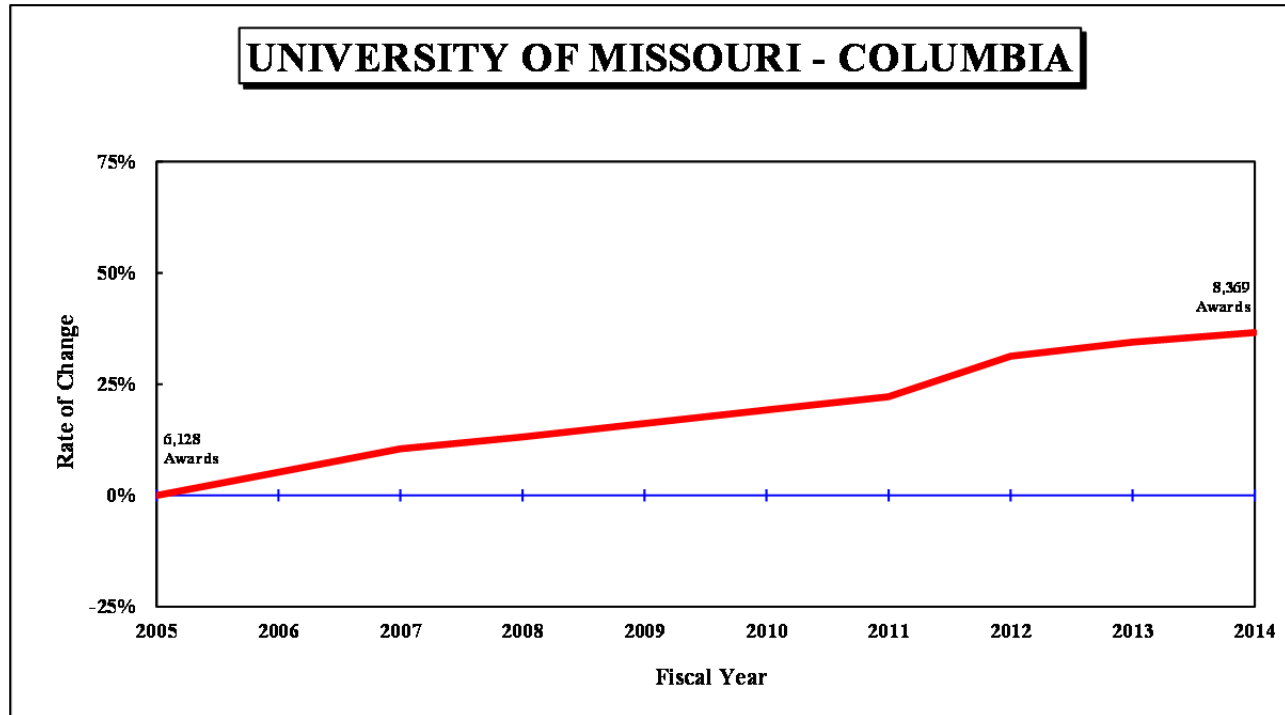


Table 1.1: Degrees and Certificates Awarded at the University of Missouri–Columbia, July 1, 2004 through June 30, 2014

DEGREE	FY	FY	FY	FY	FY	FY	FY	FY	FY	FY	3-Year	Average			Change in FY14 relative to the 10-Year Avg.
	2005	2006	2007	2008	2009	2010	2011	2012	2013	2014		5-Year	10-Year		
Bachelors	4,259	4,461	4,736	4,779	4,855	4,963	5,087	5,528	5,692	5,769	5,663.0	5,407.8	5,012.9	15%	
Graduate Certificate	79	84	68	69	88	142	162	179	225	226	210.0	186.8	132.2	71%	
First Professional	288	292	289	303	307	304	306	299	332	339	323.3	316.0	305.9	11%	
Masters	1,195	1,314	1,350	1,421	1,506	1,515	1,513	1,631	1,515	1,580	1,575.3	1,550.8	1,454.0	9%	
Education Specialist	33	21	36	34	57	59	53	43	63	65	57.0	56.6	46.4	40%	
Doctorate	274	277	293	326	306	322	365	367	411	390	389.3	371.0	333.1	17%	
Total, All Awards	6,128	6,449	6,772	6,932	7,119	7,305	7,486	8,047	8,238	8,369	8,218.0	7,889.0	7,284.5	15%	

Figure 1.2: Rate of Change in Total Degrees & Certificates Awarded at the University of Missouri–Kansas City, since 2005

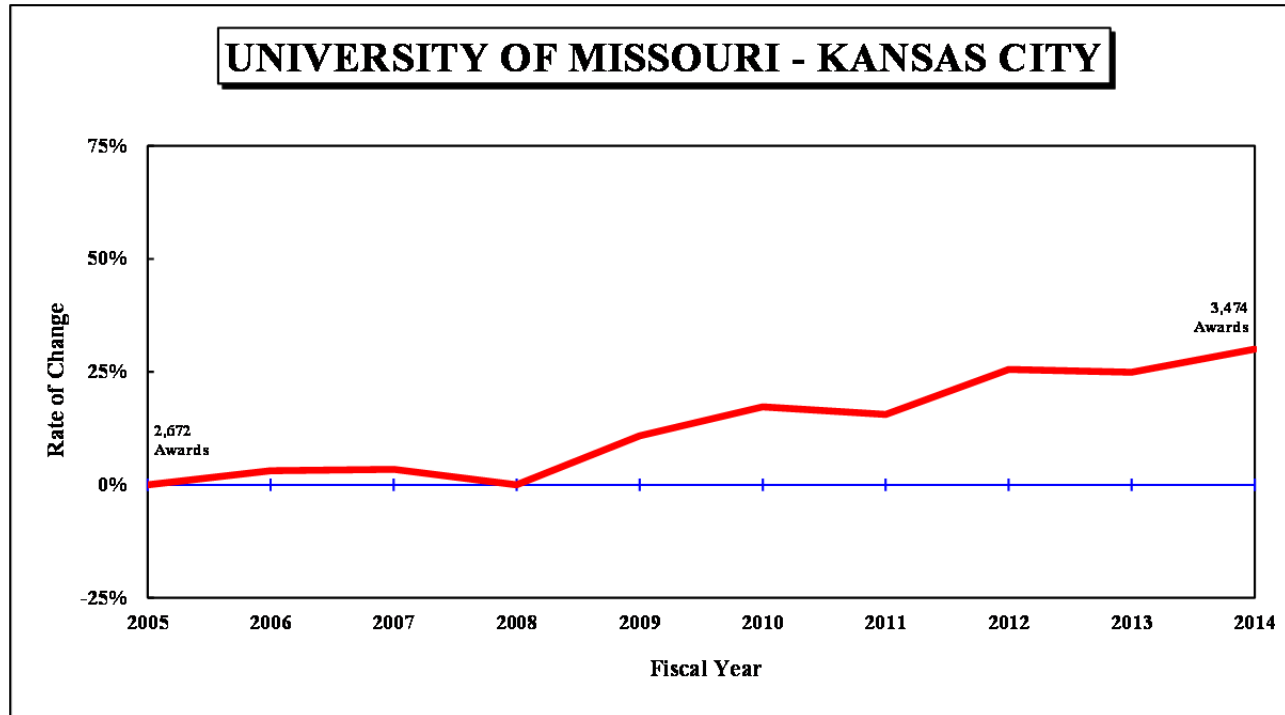


Table 1.1: Degrees and Certificates Awarded at the University of Missouri–Kansas City, July 1, 2004 through June 30, 2014

DEGREE	FY	FY	FY	FY	FY	FY	FY	FY	FY	FY	3-Year	Average			Change in FY14 relative to the 10-Year Avg.
	2005	2006	2007	2008	2009	2010	2011	2012	2013	2014		5-Year	10-Year	10-Year Avg.	
<b>UNIVERSITY OF MISSOURI - KANSAS CITY</b>															
Bachelors	1,393	1,425	1,428	1,289	1,496	1,633	1,523	1,749	1,759	1,803	1,770.3	1,693.4	1,549.8	16%	
Graduate Certificate	19	23	19	24	20	18	24	29	33	33	31.7	27.4	24.2	36%	
First Professional	377	415	438	408	412	455	468	444	475	459	459.3	460.2	435.1	5%	
Masters	794	791	769	852	917	911	972	999	954	1,028	993.7	972.8	898.7	14%	
Education Specialist	41	41	39	40	49	33	25	35	24	35	31.3	30.4	36.2	-3%	
Doctorate	48	61	71	59	68	83	77	99	93	116	102.7	93.6	77.5	50%	
Total, All Awards	2,672	2,756	2,764	2,672	2,962	3,133	3,089	3,355	3,338	3,474	3,389.0	3,277.8	3,021.5	15%	

Figure 1.3: Rate of Change in Total Degrees & Certificates Awarded at the Missouri University of Science and Technology, since 2005

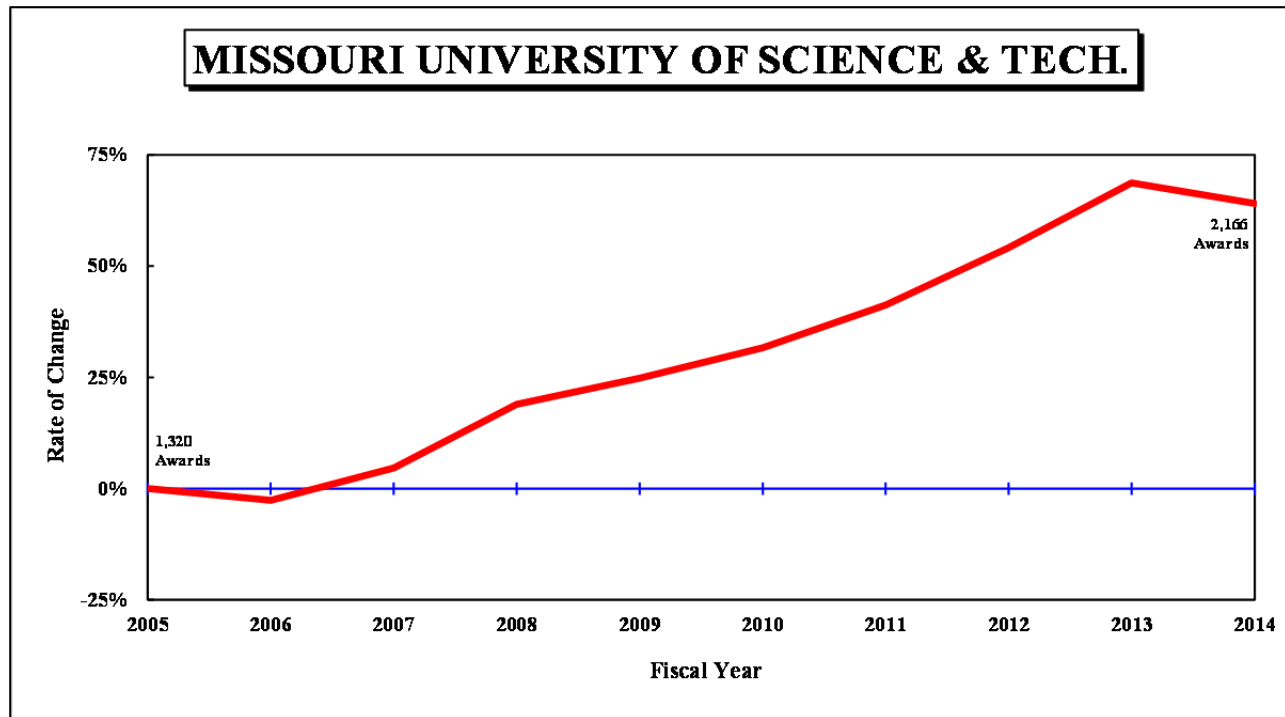


Table 1.1: Degrees and Certificates Awarded at the Missouri University of Science and Technology, July 1, 2004 through June 30, 2014

DEGREE	FY 2005	FY 2006	FY 2007	FY 2008	FY 2009	FY 2010	FY 2011	FY 2012	FY 2013	FY 2014	3-Year	Average			Change in FY14 relative to the 10-Year Avg.
												5-Year	10-Year	10-Year Avg.	
<b>MISSOURI UNIVERSITY OF SCIENCE AND TECHNOLOGY</b>															
Undergrad. Certificate			1	3	2	1	4	2	0	3	1.7	2.0	N/A		
Bachelors	731	744	834	910	920	997	997	1,077	1,118	1,141	1,112.0	1,066.0	946.9	20%	
Graduate Certificate	83	75	127	164	250	278	282	319	435	401	385.0	343.0	241.4	66%	
Masters	440	392	356	430	426	411	517	567	579	551	565.7	525.0	466.9	18%	
Doctorate	66	74	63	63	50	51	65	70	95	70	78.3	70.2	66.7	5%	
<b>Total, All Awards</b>	<b>1,320</b>	<b>1,285</b>	<b>1,381</b>	<b>1,570</b>	<b>1,648</b>	<b>1,738</b>	<b>1,865</b>	<b>2,035</b>	<b>2,227</b>	<b>2,166</b>	<b>2,142.7</b>	<b>2,006.2</b>	<b>1,723.5</b>	<b>26%</b>	

Figure 1.4: Rate of Change in Total Degrees & Certificates Awarded at the University of Missouri–St. Louis, since 2005

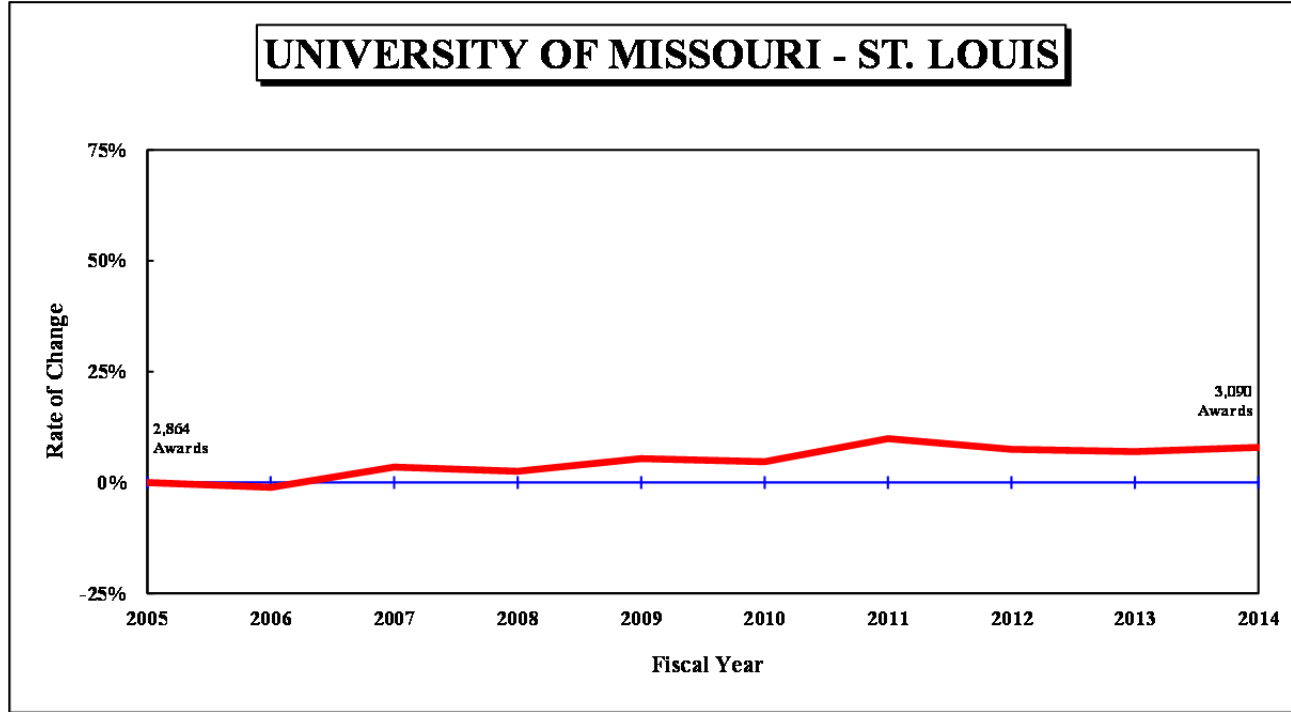


Table 1.1: Degrees and Certificates Awarded at the University of Missouri–St. Louis, July 1, 2004 through June 30, 2014

DEGREE	FY	FY	FY	FY	FY	FY	FY	FY	FY	FY	Average			Change in FY14 relative to the 10-Year Avg.	
	2005	2006	2007	2008	2009	2010	2011	2012	2013	2014	3-Year	5-Year	10-Year		
<b>UNIVERSITY OF MISSOURI - ST. LOUIS</b>															
Undergrad. Certificate										2	20	N/A	N/A	N/A	
Bachelors	1,902	1,905	2,039	2,016	2,018	2,011	2,092	1,963	1,974	2,020	1,985.7	2,012.0	1,994.0	1%	
Graduate Certificate	76	77	79	64	80	82	71	96	88	80	88.0	83.4	79.3	1%	
First Professional	46	34	44	38	44	41	44	47	40	39	42.0	42.2	41.7	-6%	
Masters	786	730	718	729	771	771	868	872	871	854	865.7	847.2	797.0	7%	
Education Specialist	3	29	31	28	42	31	22	26	28	13	22.3	24.0	N/A		
Doctorate	51	58	52	62	63	63	50	74	61	64	66.3	62.4	59.8	7%	
<b>Total, All Awards</b>	<b>2,864</b>	<b>2,833</b>	<b>2,963</b>	<b>2,937</b>	<b>3,018</b>	<b>2,999</b>	<b>3,147</b>	<b>3,078</b>	<b>3,064</b>	<b>3,090</b>	<b>3,077.3</b>	<b>3,075.6</b>	<b>2,999.3</b>	<b>3%</b>	



Figure 2.0: Rate of Change in Total Degrees Awarded, since 2005

UNIVERSITY OF MISSOURI SYSTEM

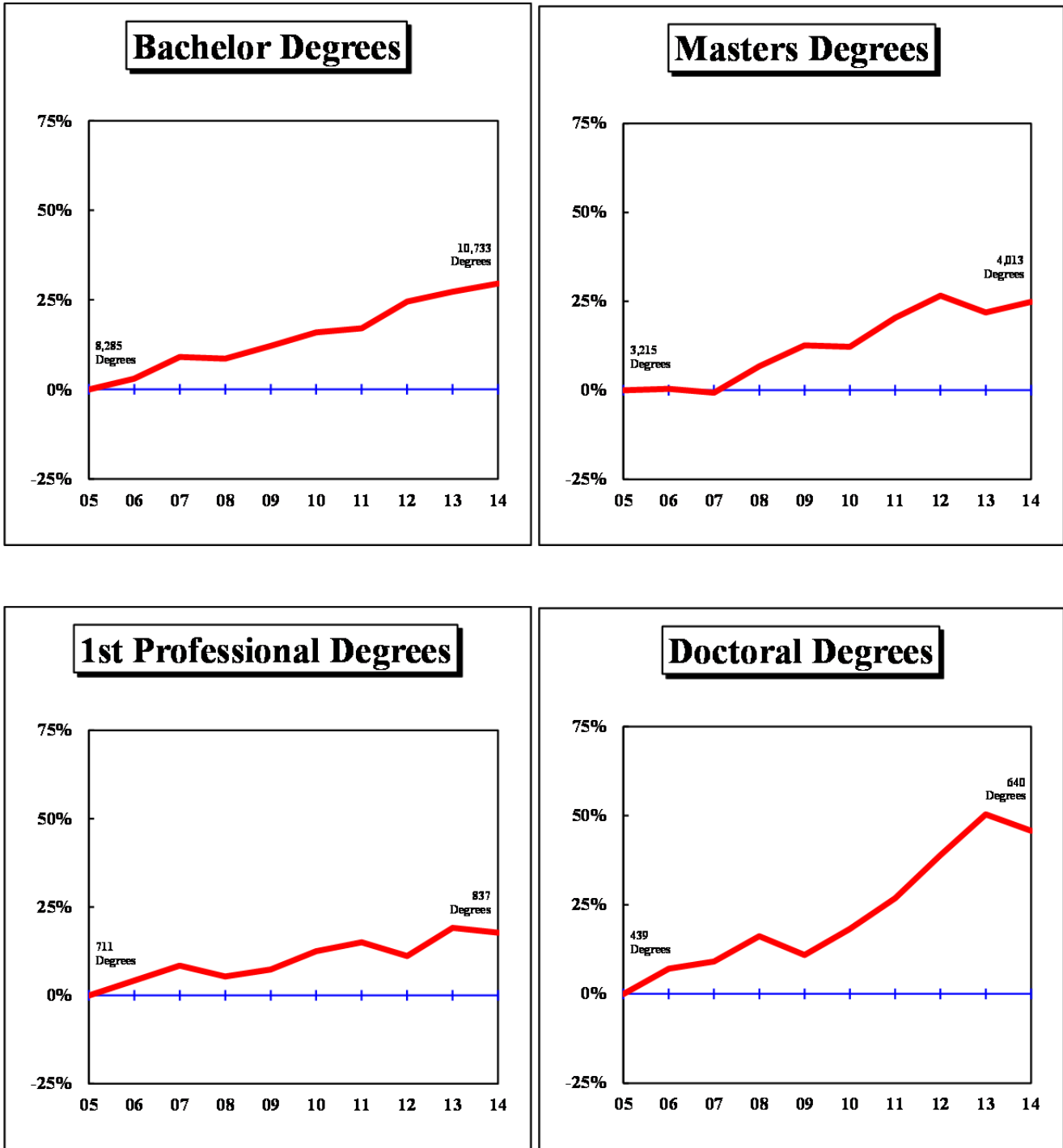


Figure 2.1: Rate of Change in Total Degrees Awarded by Campus, since 2005

UNIVERSITY OF MISSOURI-COLUMBIA

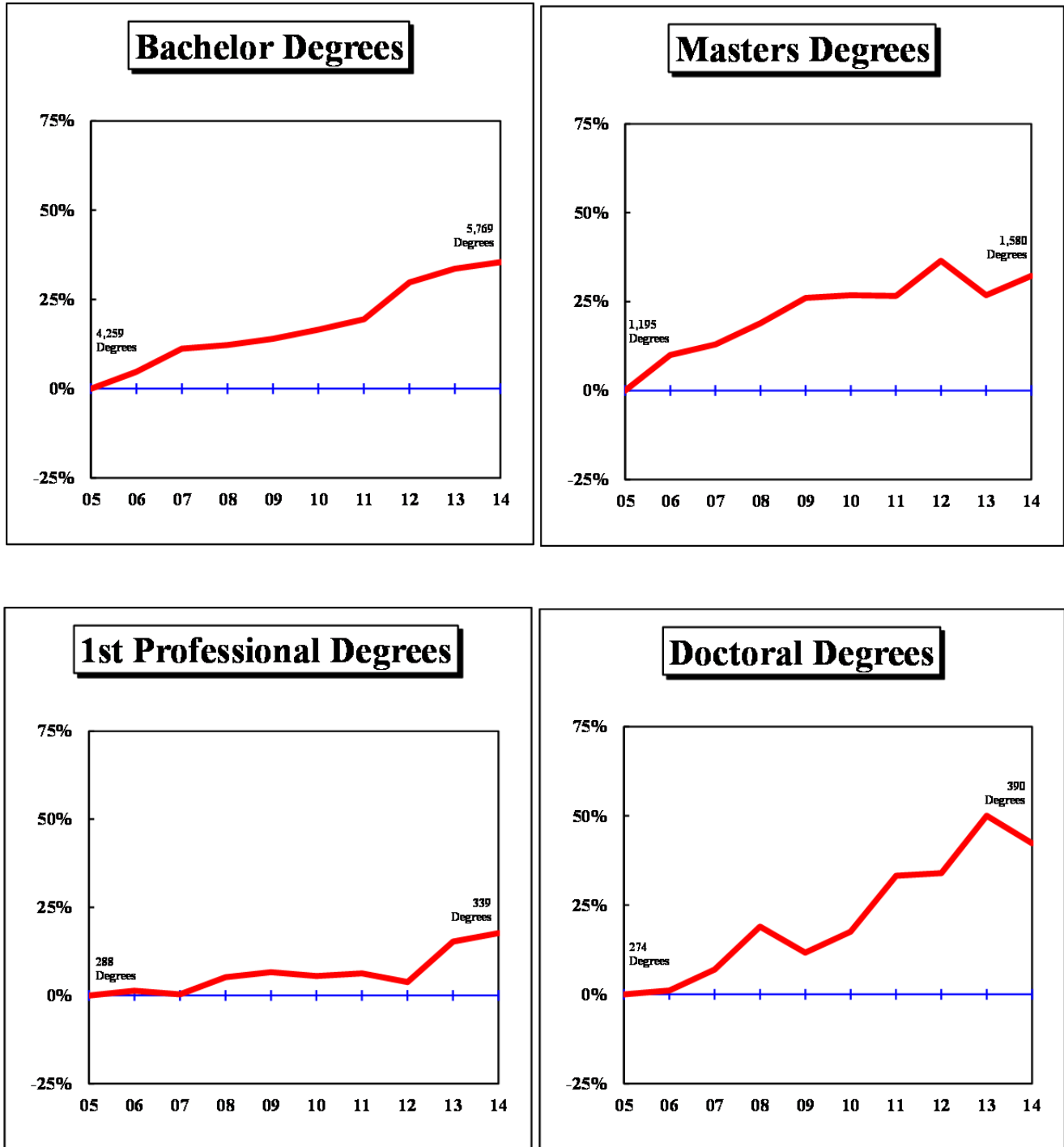


Figure 2.2: Rate of Change in Total Degrees Awarded by Campus, since 2005

UNIVERSITY OF MISSOURI-KANSAS CITY

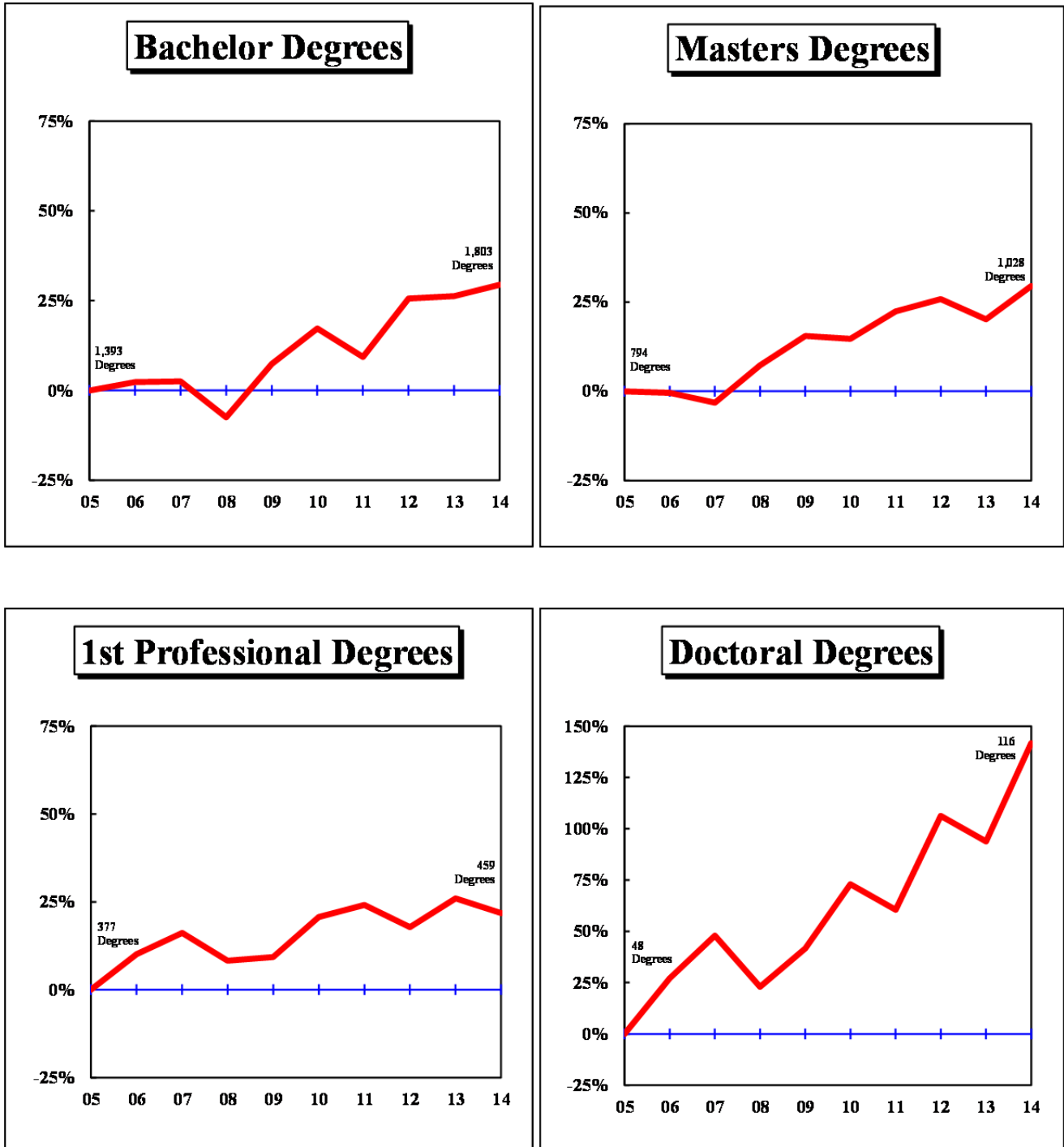


Figure 2.3: Rate of Change in Total Degrees Awarded by Campus, since 2005

MISSOURI UNIVERSITY OF SCIENCE AND TECHNOLOGY

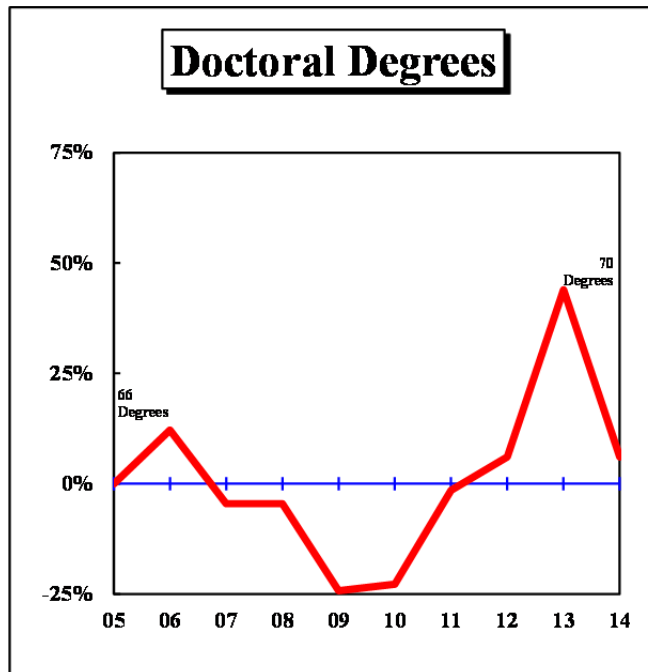
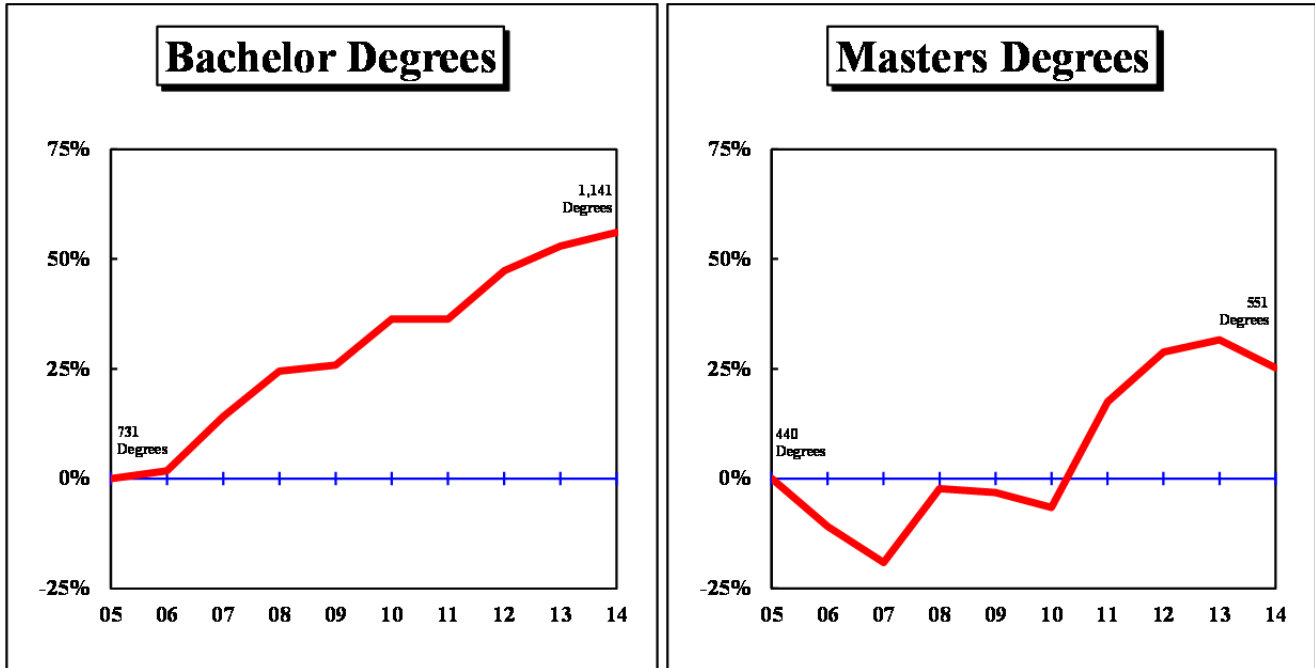


Figure 2.4: Rate of Change in Total Degrees Awarded by Campus, since 2005

UNIVERSITY OF MISSOURI-ST. LOUIS

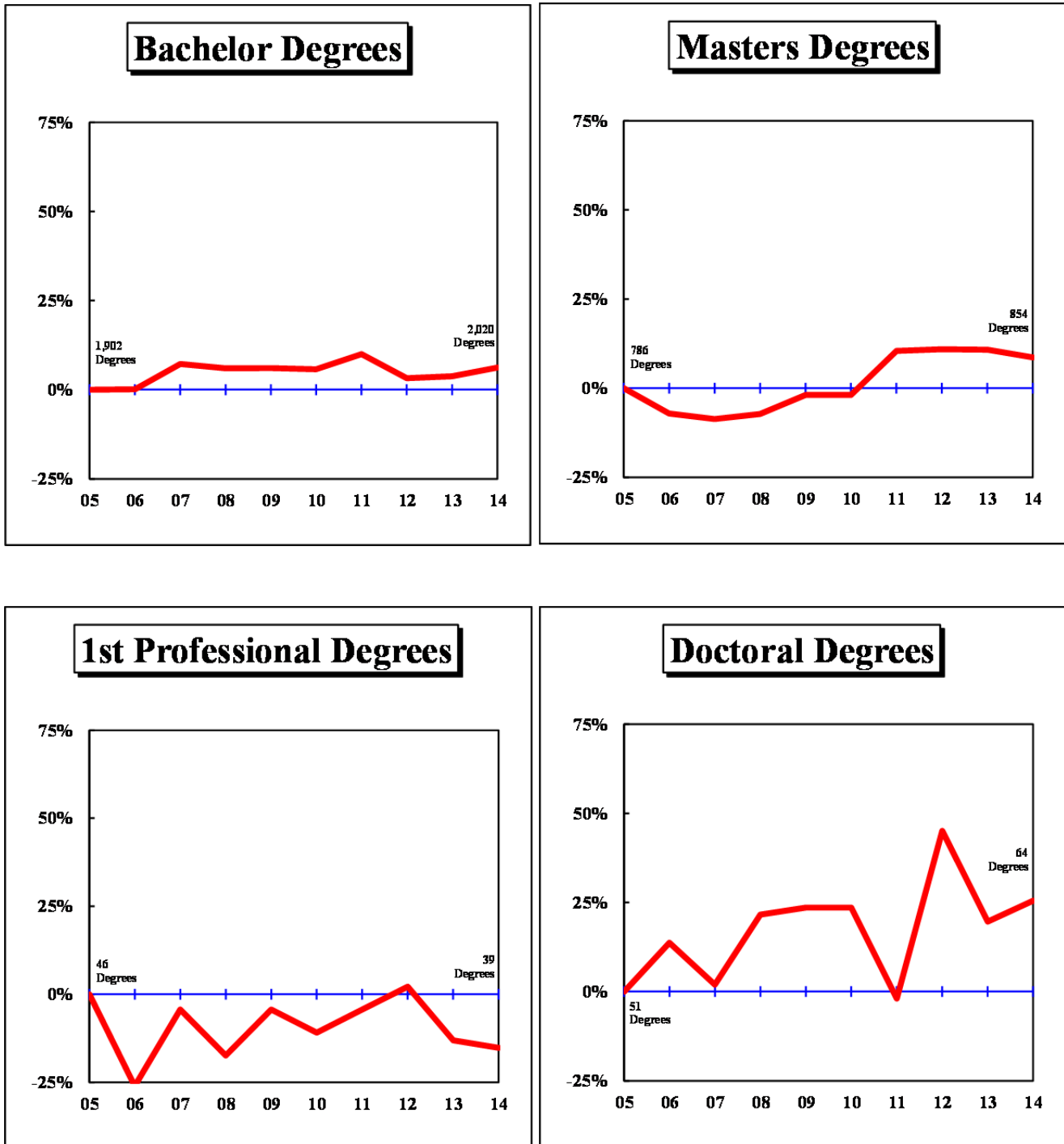


Table 2.1: Degrees and Certificates Awarded by Colleges at the University of Missouri–Columbia

COLLEGE/DEGREE	FY	FY	FY	FY	FY	FY	FY	FY	FY	FY	Average	Change in FY14 relative to the 10-Year Avg.		
	2005	2006	2007	2008	2009	2010	2011	2012	2013	2014			3-Year	5-Year
<b>AGRICULTURE, FOOD, AND NATURAL RESOURCES, COLLEGE OF</b>														
Bachelors	306	356	344	367	391	383	400	432	491	460	461.0	433.2	393.0	17%
Masters	37	43	55	46	51	38	45	51	44	68	54.3	49.2	47.8	42%
Doctorate	24	31	26	26	32	28	27	24	34	35	31.0	29.6	28.7	22%
All	367	430	425	439	474	449	472	507	569	563	546.3	512.0	469.5	20%
<b>ARTS AND SCIENCE, COLLEGE OF</b>														
Bachelors	1,549	1,633	1,775	1,725	1,741	1,744	1,812	1,961	2,046	1,902	1,969.7	1,893.0	1,788.8	6%
Masters	136	159	161	158	176	144	176	169	168	209	182.0	173.2	165.6	26%
Doctorate	101	100	87	108	97	104	98	119	106	113	112.7	108.0	103.3	9%
All	1,786	1,892	2,023	1,991	2,014	1,992	2,086	2,249	2,320	2,224	2,264.3	2,174.2	2,057.7	8%
<b>BUSINESS, COLLEGE OF</b>														
Bachelors	711	777	792	807	779	900	838	824	786	785	798.3	826.6	799.9	-2%
Grad. Certif.	56	51	50	30	9	15	27	23	21	24	22.7	22.0	30.6	-22%
Masters	174	197	213	214	204	237	220	217	231	229	225.7	226.8	213.6	7%
Doctorate	8	6	14	6	6	4	6	10	8	8	8.7	7.2	7.6	5%
All	949	1,031	1,069	1,057	998	1,156	1,091	1,074	1,046	1,046	1,055.3	1,082.6	1,051.7	-1%
<b>EDUCATION, COLLEGE OF</b>														
Bachelors	234	283	269	249	246	239	246	274	284	305	287.7	269.6	262.9	16%
Masters	360	438	440	450	485	502	495	532	464	418	471.3	482.2	458.4	-9%
Ed. Specialist	33	21	36	34	57	59	53	43	63	65	57.0	56.6	46.4	40%
Doctorate	73	62	84	87	87	74	84	79	117	73	89.7	85.4	82.0	-11%
All	700	804	829	820	875	874	878	928	928	861	905.7	893.8	849.7	1%
<b>ENGINEERING, COLLEGE OF</b>														
Bachelors	378	343	383	368	386	398	422	518	472	490	493.3	460.0	415.8	18%
Masters	87	107	60	93	90	78	109	100	120	131	117.0	107.6	97.5	34%
Doctorate	24	33	39	36	24	24	44	32	32	43	35.7	35.0	33.1	30%
All	489	483	482	497	500	500	575	650	624	664	646.0	602.6	546.4	22%
<b>HEALTH PROFESSIONS, SCHOOL OF</b>														
Bachelors	122	113	138	153	155	176	242	345	426	549	440.0	347.6	241.9	127%
Masters	62	67	56	96	82	48	40	55	51	58	54.7	50.4	61.5	-6%
Doctorate	0	0	0	0	0	36	43	38	45	43	42.0	41.0	20.5	110%
All	184	180	194	249	237	260	325	438	522	650	536.7	439.0	323.9	101%

Table 2.1: Degrees and Certificates Awarded by Colleges at the University of Missouri–Columbia (continued)

COLLEGE/DEGREE	FY	FY	FY	FY	FY	FY	FY	FY	FY	FY	3-Year	Average		Change in FY14 relative to the 10-Year Avg.
	2005	2006	2007	2008	2009	2010	2011	2012	2013	2014		5-Year	10-Year	
<b>HUMAN ENVIRONMENTAL SCIENCES, COLLEGE OF</b>														
Bachelors	262	250	234	278	298	274	275	279	309	318	302.0	291.0	277.7	15%
Grad. Certif.		1	0	0	0	0	0	0	0	0	0.0	0.0	N/A	
Masters	35	24	15	18	35	17	30	34	28	26	29.3	27.0	26.2	-1%
Doctorate	3	4	7	5	9	8	12	7	9	11	9.0	9.4	7.5	47%
All	300	279	256	301	342	299	317	320	346	355	340.3	327.4	311.5	14%
<b>JOURNALISM, SCHOOL OF</b>														
Bachelors	404	412	426	475	520	521	510	534	504	520	519.3	517.8	482.6	8%
Masters	94	70	69	91	107	112	88	111	73	91	91.7	95.0	90.6	0%
Doctorate	10	14	5	10	9	8	12	10	8	6	8.0	8.8	9.2	-35%
All	508	496	500	576	636	641	610	655	585	617	619.0	621.6	582.4	6%
<b>LAW, SCHOOL OF</b>														
Grad. Certif.	1	18	0	21	16	37	39	26	41	25	30.7	33.6	22.4	12%
First Profes.	138	139	143	148	152	141	144	142	133	132	135.7	138.4	141.2	-7%
Masters	10	7	13	15	13	7	19	8	14	8	10.0	11.2	11.4	-30%
All	149	164	156	184	181	185	202	176	188	165	176.3	183.2	175.0	-6%
<b>MEDICINE, SCHOOL OF</b>														
First Profes.	89	89	87	89	85	99	93	87	98	97	94.0	94.8	91.3	6%
Masters	27	29	25	32	36	41	48	51	42	56	49.7	47.6	38.7	45%
Doctorate	7	5	8	14	10	11	7	14	13	5	10.7	10.0	9.4	-47%
All	123	123	120	135	131	151	148	152	153	158	154.3	152.4	139.4	13%
<b>NATURAL RESOURCES, SCHOOL OF</b>														
Bachelors	109	99	131	113	115	96	107	113	121	190	141.3	125.4	119.4	59%
Masters	27	21	26	18	20	21	26	28	22	30	26.7	25.4	23.9	26%
Doctorate	9	7	9	10	7	5	7	8	10	3	7.0	6.6	7.5	-60%
All	145	127	166	141	142	122	140	149	153	223	175.0	157.4	150.8	48%
<b>NURSING, SCHOOL OF</b>														
Bachelors	156	166	201	187	190	190	193	211	211	217	213.0	204.4	192.2	13%
Masters	36	28	33	40	50	60	43	43	42	36	40.3	44.8	41.1	-12%
Doctorate	2	4	3	4	5	3	4	4	2	25	10.3	7.6	5.6	346%
All	194	198	237	231	245	253	240	258	255	278	263.7	256.8	238.9	16%

Table 2.1: Degrees and Certificates Awarded by Colleges at the University of Missouri–Columbia (continued)

COLLEGE/DEGREE	FY	FY	FY	FY	FY	FY	FY	FY	FY	FY	3-Year	Average		Change in FY14 relative to the 10-Year Avg.
	2005	2006	2007	2008	2009	2010	2011	2012	2013	2014		5-Year	10-Year	
<b>PUBLIC AFFAIRS, SCHOOL OF</b>														
Masters										60	N/A	N/A	N/A	
Doctorate										2	N/A	N/A	N/A	
All										62	N/A	N/A	N/A	
<b>SOCIAL WORK, SCHOOL OF</b>														
Bachelors	28	29	43	57	34	42	42	37	42	33	37.3	39.2	38.7	-15%
Masters	48	65	112	58	64	129	51	97	87	70	84.7	86.8	78.1	-10%
Doctorate	1	0	1	4	9	4	3	2	1	3	2.0	2.6	2.8	7%
All	77	94	156	119	107	175	96	136	130	106	124.0	128.6	119.6	-11%
<b>VETERINARY MEDICINE, COLLEGE OF</b>														
First Profes.	61	64	59	66	70	64	69	70	101	110	93.7	82.8	73.4	50%
Masters	7	4	11	11	8	7	8	9	5	9	7.7	7.6	7.9	14%
Doctorate	2	1	4	2	2	1	5	2	2	3	2.3	2.6	2.4	25%
All	70	69	74	79	80	72	82	81	108	122	103.7	93.0	83.7	46%
<b>GRADUATE STUDIES</b>														
Grad. Certif.	22	14	18	18	63	90	96	130	163	177	156.7	131.2	79.1	124%
Masters	55	55	61	81	85	74	115	126	124	81	110.3	104.0	85.7	-5%
Doctorate	10	10	6	14	9	12	13	18	24	17	19.7	16.8	13.3	28%
All	87	79	85	113	157	176	224	274	311	275	286.7	252.0	178.1	54%

IR&P/RS 9/14



Table 2.2: Degrees and Certificates Awarded by Colleges at the University of Missouri–Kansas City

COLLEGE/DEGREE	FY	FY	FY	FY	FY	FY	FY	FY	FY	FY	3-Year	Average		Change in FY14 relative to the 10-Year Avg.
	2005	2006	2007	2008	2009	2010	2011	2012	2013	2014		5-Year	10-Year	
<b>ARTS AND SCIENCES, COLLEGE OF</b>														
Bachelors	795	805	778	713	829	931	813	934	877	895	902.0	890.0	837.0	7%
Grad. Certif.	0	0	0	0	0	0	0	1	1	3	1.7	1.0	0.5	500%
Masters	150	189	161	198	187	173	210	252	184	227	221.0	209.2	193.1	18%
Doctorate	0	4	4	2	4	4	2	3	2	7	4.0	3.6	3.2	119%
All	945	998	943	913	1,020	1,108	1,025	1,190	1,064	1,132	1,128.7	1,103.8	1,033.8	9%
<b>BIOLOGICAL SCIENCES, SCHOOL OF</b>														
Bachelors	57	64	74	58	61	84	71	95	101	99	98.3	90.0	76.4	30%
Masters	21	16	19	18	20	23	21	26	26	24	25.3	24.0	21.4	12%
All	78	80	93	76	81	107	92	121	127	123	123.7	114.0	97.8	26%
<b>COMPUTING AND ENGINEERING, SCHOOL OF</b>														
Bachelors	109	93	89	80	86	95	82	103	118	105	108.7	100.6	96.0	9%
Grad. Certif.									1	2	N/A	N/A	N/A	
Masters	85	75	89	112	144	135	194	121	122	124	122.3	139.2	120.1	3%
All	194	168	178	192	230	230	276	224	241	231	232.0	240.4	216.4	7%
<b>DENTISTRY, SCHOOL OF</b>														
Bachelors	24	28	31	28	27	31	34	35	36	30	33.7	33.2	30.4	-1%
Grad. Certif.	17	23	19	22	17	17	17	17	17	17	17.0	17.0	18.3	-7%
First Profes.	79	92	101	100	102	96	98	99	106	103	102.7	100.4	97.6	6%
Masters	2	0	3	4	9	7	9	9	10	4	7.7	7.8	5.7	-30%
All	122	143	154	154	155	151	158	160	169	154	161.0	158.4	152.0	1%
<b>EDUCATION, SCHOOL OF</b>														
Bachelors	107	107	124	98	118	116	107	113	108	112	111.0	111.2	111.0	1%
Grad. Certif.								0	0	3	1.0	N/A	N/A	
Masters	200	196	156	147	184	152	131	144	156	152	150.7	147.0	161.8	-6%
Ed. Specialist	41	41	39	40	49	33	25	35	24	35	31.3	30.4	36.2	-3%
Doctorate	7	4	5	10	9	5	4	13	9	21	14.3	10.4	8.7	141%
All	355	348	324	295	360	306	267	305	297	323	308.3	299.6	318.0	2%
<b>GRADUATE STUDIES, SCHOOL OF</b>														
Grad. Certif.					1	0	2	5	2	2	3.0	2.2	N/A	
Doctorate	29	43	43	32	24	32	31	42	45	55	47.3	41.0	37.6	46%
All	29	43	43	32	25	32	33	47	47	57	50.3	43.2	38.8	47%

Table 2.2: Degrees and Certificates Awarded by Colleges at the University of Missouri–Kansas City (continued)

COLLEGE/DEGREE	FY 2005	FY 2006	FY 2007	FY 2008	FY 2009	FY 2010	FY 2011	FY 2012	FY 2013	FY 2014	3-Year	Average 5-Year	10-Year	Change in FY14 relative to the 10-Year Avg.
<b>LAW, SCHOOL OF</b>														
First Profes.	153	156	176	150	153	156	156	150	159	141	150.0	152.4	155.0	-9%
Masters	15	21	19	22	32	32	30	18	33	29	26.7	28.4	25.1	16%
All	168	177	195	172	185	188	186	168	192	170	176.7	180.8	180.1	-6%
<b>MANAGEMENT, SCHOOL OF</b>														
Bachelors	180	189	194	178	195	192	207	228	231	276	245.0	226.8	207.0	33%
Masters	213	181	213	228	240	254	257	276	263	292	277.0	268.4	241.7	21%
Doctorate								0	1	1	0.7	N/A	N/A	
All	393	370	407	406	435	446	464	504	495	569	522.7	495.6	448.9	27%
<b>MEDICINE, SCHOOL OF</b>														
Grad. Certif.					0	0	0	1	5	0	2.0	1.2	N/A	
First Profes.	83	90	84	86	87	92	101	89	88	90	89.0	92.0	89.0	1%
Masters				0	0	4	4	7	12	21	13.3	9.6	N/A	
All	83	90	84	86	87	96	105	97	105	111	104.3	102.8	94.4	18%
<b>MUSIC AND DANCE, CONSERVATORY OF</b>														
Bachelors	55	57	52	49	70	70	47	65	64	43	57.3	57.8	57.2	-25%
Grad. Certif.	2	0	0	2	2	1	5	5	7	6	6.0	4.8	3.0	100%
Masters	49	41	47	47	43	56	38	39	42	25	35.3	40.0	42.7	-41%
Doctorate	9	9	14	12	21	20	21	16	21	18	18.3	19.2	16.1	12%
All	115	107	113	110	136	147	111	125	134	92	117.0	121.8	119.0	-23%
<b>NURSING AND HEALTH STUDIES, SCHOOL OF</b>														
Bachelors	61	76	76	80	102	107	148	167	217	239	207.7	175.6	127.3	88%
Masters	58	69	59	75	57	74	78	107	106	130	114.3	99.0	81.3	60%
Doctorate	3	1	5	3	10	22	19	25	15	14	18.0	19.0	11.7	20%
All	122	146	140	158	169	203	245	299	338	383	340.0	293.6	220.3	74%
<b>PHARMACY, SCHOOL OF</b>														
Bachelors	5	6	10	5	8	7	14	9	7	4	6.7	8.2	7.5	-47%
First Profes.	62	77	77	72	70	111	113	106	122	125	117.7	115.4	93.5	34%
Masters	1	3	3	1	1	1	0	0			N/A	N/A	N/A	
All	68	86	90	78	79	119	127	115	129	129	124.3	123.8	102.0	26%

**Table 2.3: Degrees and Certificates Awarded by Colleges at the Missouri University of Science and Technology**

This information is no longer provided since Missouri S&T eliminated schools and colleges in FY 2008.

Table 2.4: Degrees and Certificates Awarded by Colleges at the University of Missouri–St. Louis

COLLEGE/DEGREE	FY 2005	FY 2006	FY 2007	FY 2008	FY 2009	FY 2010	FY 2011	FY 2012	FY 2013	FY 2014	3-Year	Average 5-Year	10-Year	Change in FY14 relative to the 10-Year Avg.	
<b>ARTS AND SCIENCES, COLLEGE OF</b>															
U-Grad. Certif.										2	20	N/A	N/A	N/A	
Bachelors	640	674	759	734	749	763	772	763	791	792	782.0	776.2	743.7	6%	
Grad. Certif.	25	26	34	18	30	35	20	30	27	9	22.0	24.2	25.4	-65%	
Masters	208	201	211	214	215	241	241	243	237	210	230.0	234.4	222.1	-5%	
Doctorate	27	30	30	24	34	35	24	33	29	36	32.7	31.4	30.2	19%	
All	900	931	1,034	990	1,028	1,074	1,057	1,069	1,086	1,067	1,074.0	1,070.6	1,023.6	4%	
<b>BUSINESS ADMINISTRATION, COLLEGE OF</b>															
Bachelors	532	542	579	598	573	545	579	505	440	507	484.0	515.2	540.0	-6%	
Grad. Certif.	21	16	16	18	12	11	13	19	7	16	14.0	13.2	14.9	7%	
Masters	145	133	163	163	210	162	171	204	189	185	192.7	182.2	172.5	7%	
Doctorate	0	0	1	1	0	2	1	2	0	0	0.7	1.0	0.7	-100%	
All	698	691	759	780	795	720	764	730	636	708	691.3	711.6	728.1	-3%	
<b>EDUCATION, COLLEGE OF</b>															
Bachelors	276	247	260	230	271	229	256	223	234	205	220.7	229.4	243.1	-16%	
Grad. Certif.	6	11	8	1	4	5	10	21	21	25	22.3	16.4	11.2	123%	
Masters	333	302	252	255	262	287	340	301	336	370	335.7	326.8	303.8	22%	
Ed. Specialist	3	29	31	28	42	31	22	26	28	13	22.3	24.0	25.3	-49%	
Doctorate	21	24	18	27	27	24	21	33	24	21	26.0	24.6	24.0	-13%	
All	639	613	569	541	606	576	649	604	643	634	627.0	621.2	607.4	4%	
<b>FINE ARTS AND COMMUNICATION, COLLEGE OF</b>															
Bachelors	219	219	210	210	188	214	223	207	225	218	216.7	217.4	213.3	2%	
Masters	7	16	19	26	14	22	17	28	4	14	15.3	17.0	16.7	-16%	
All	226	235	229	236	202	236	240	235	229	232	232.0	234.4	230.0	1%	
<b>NURSING, COLLEGE OF</b>															
Bachelors	152	160	163	186	181	200	201	206	224	246	225.3	215.4	191.9	28%	
Grad. Certif.				5	1	1	4	2	2	4	2.7	2.6	N/A		
Masters	60	46	48	51	43	41	72	63	79	52	64.7	61.4	55.5	-6%	
Doctorate	1	4	2	9	2	2	4	6	7	7	6.7	5.2	4.4	59%	
All	213	210	213	251	227	244	281	277	312	309	299.3	284.6	253.7	22%	

Table 2.4: Degrees and Certificates Awarded by Colleges at the University of Missouri–St. Louis (continued)

COLLEGE/DEGREE	FY 2005	FY 2006	FY 2007	FY 2008	FY 2009	FY 2010	FY 2011	FY 2012	FY 2013	FY 2014	3-Year	Average 5-Year	10-Year	Change in FY14 relative to the 10-Year Avg.
<b>OPTOMETRY, COLLEGE OF</b>														
First Profes.	46	34	44	38	44	41	44	47	40	39	42.0	42.2	41.7	-6%
Masters	0	0	0	0	1	2	1	0	1	1	0.7	1.0	0.6	67%
Doctorate	2	0	1	1	0	0	0	0	1	0	0.3	0.2	0.5	-100%
All	48	34	45	39	45	43	45	47	42	40	43.0	43.4	42.8	-7%
<b>ENGINEERING PROGRAM</b>														
Bachelors	42	33	48	46	52	56	58	58	58	51	55.7	56.2	50.2	2%
<b>EVENING COLLEGE</b>														
Bachelors	41										N/A	N/A	N/A	
<b>GRADUATE SCHOOL</b>														
Bachelors		30	20	12	4	4	3	1	2	1	1.3	2.2	N/A	
Grad. Certif.	24	24	21	22	33	30	24	24	31	26	27.0	27.0	25.9	0%
Masters	33	32	25	20	26	16	26	33	25	22	26.7	24.4	25.8	-15%
All	57	86	66	54	63	50	53	58	58	49	55.0	53.6	59.4	-18%

IR.&P/RS 8/14