

**The 2014-2015 Report of Degrees Awarded
by the University of Missouri**

Randy Sade
Research Analyst

Office of Institutional Research and Planning
University of Missouri System

September 2015

IR&P 2015, Report 2

<http://www.umsystem.edu/ums/aa/planning/>

The 2014-2015 Report of Degrees Awarded by the University of Missouri

Executive Summary

This report includes graphs and tables of degrees awarded by each campus since FY 2006. The first table provides a summary of degrees by level for each campus, while the second table series gives the number of awards by the colleges of each campus. The *Department Detail Summary* reflects the number of degrees awarded by academic department. These tables also show the average number of degrees over a 3, 5, & 10-year period and the percent change in FY 2015 that is relative to the 10-year average.

The highlights of the report from the Table 1 series include:

- The University of Missouri System awarded a record 18,109 degrees and certificates, a 17% growth in FY 2015 relative to the 10-year average.
- Relative to the 10-year average, the number of FY 2015 doctorate degrees for the University of Missouri System increased 26%, and graduate certificates increased 47%.
- Comparing FY 2015 degrees to the 10-year averages, the most notable increases are: bachelors degrees awarded are up 16% at UM-Columbia and 30% at Missouri S&T; masters degrees are up 27% at UM- Kansas City and 38% at Missouri S&T; and doctorates are up 36% at Missouri S&T and 33% at UM-St. Louis.
- First Professional degrees at UM- Columbia increased 11% and 10% at UM- Kansas City when comparing FY 2015 to the 10-year average.
- Based on the 10-year averages, Graduate Certificates continues to grow in FY 2015 with a 61% increase at UM-Columbia, 83% increase at UM-Kansas City, and an increase of 48% at Missouri S&T.

Notes Regarding Use of the Report:

- The official annual reporting period is from July 1 to June 30 of the following calendar year. For example, FY15 includes summer and fall graduates from 2014 and the spring graduates of 2015.
- Please note the axis scale range when considering graphs. It may change from campus to campus.
- Previous year's tables may differ because tables in the report have been changed from the use of running averages to 3-, 5-, and 10-year averages.
- This report includes a 10-year average as related to FY 2015.
- Source for this report is the printed Completions Report.

Technical Notes for Use with the Report:

Footnotes

- Footnotes are of the utmost importance in reading tables in the appendix.

Name Changes

- If a program name changes, the report history is changed to reflect the new name and is footnoted.
- If a degree name or description is changed, the report history is changed to the new description and is footnoted.
- If a department name changes, the report history is changed to the new description and NO footnotes are made.
- If a school or college changes, the report history is changed to the new description and NO footnotes are made.

Program Moves

- If a program moves to another department or school, the data are reported as is – that is, report history is not changed and the new data are reported in the new department. A new footnote is added, i.e., program is moving. Eventually – when there are no more degrees for the old department, the old department is hidden in the report.
- If a program moves to another school or college, the data are reported as is – that is, report history is not changed and the new data are reported in the new school or college. A footnote is added, i.e., program is moving. Eventually – when there are no more degrees for the old program, the former program is hidden in the report.

Figure 1.0: Rate of Change in Total Degrees & Certificates Awarded for the University of Missouri System, since 2006

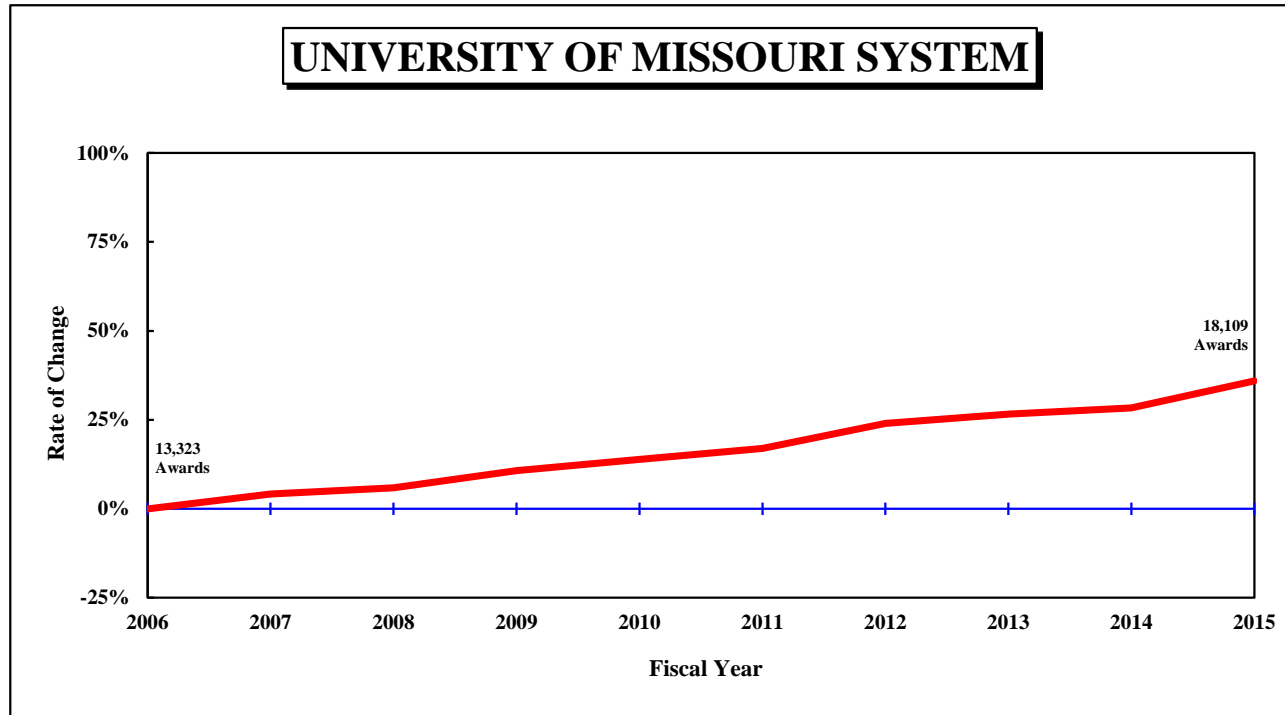


Table 1.0: Degrees and Certificates Awarded for the University of Missouri System, July 1, 2005 through June 30, 2015

DEGREE	FY	FY	FY	FY	FY	FY	FY	FY	FY	FY	Average			Change in FY15 relative to the 10-Year Avg.
	2006	2007	2008	2009	2010	2011	2012	2013	2014	2015	3-Year	5-Year	10-Year	
UNIVERSITY OF MISSOURI SYSTEM														
Undergrad. Certificate		1	3	2	1	4	2	2	23	55	9.0	6.4	N/A	
Bachelors	8,535	9,037	8,994	9,289	9,604	9,699	10,317	10,543	10,733	11,360	10,878.7	10,530.4	9,811.1	16%
Graduate Certificate	259	293	321	438	520	539	623	781	740	780	767.0	692.6	529.4	47%
First Professional	741	771	749	763	800	818	790	847	837	876	853.3	833.6	799.2	10%
Masters	3,227	3,193	3,432	3,620	3,608	3,870	4,069	3,919	4,013	4,204	4,045.3	4,015.0	3,715.5	13%
Education Specialist	91	106	102	148	123	100	104	115	113	122	116.7	110.8	112.4	9%
Doctorate	470	479	510	487	519	557	610	660	640	712	670.7	635.8	564.4	26%
Total, All Awards	13,323	13,880	14,111	14,747	15,175	15,587	16,515	16,867	17,099	18,109	17,358.3	16,835.4	15,541.3	17%

Figure 1.1: Rate of Change in Total Degrees & Certificates Awarded at the University of Missouri–Columbia, since 2006

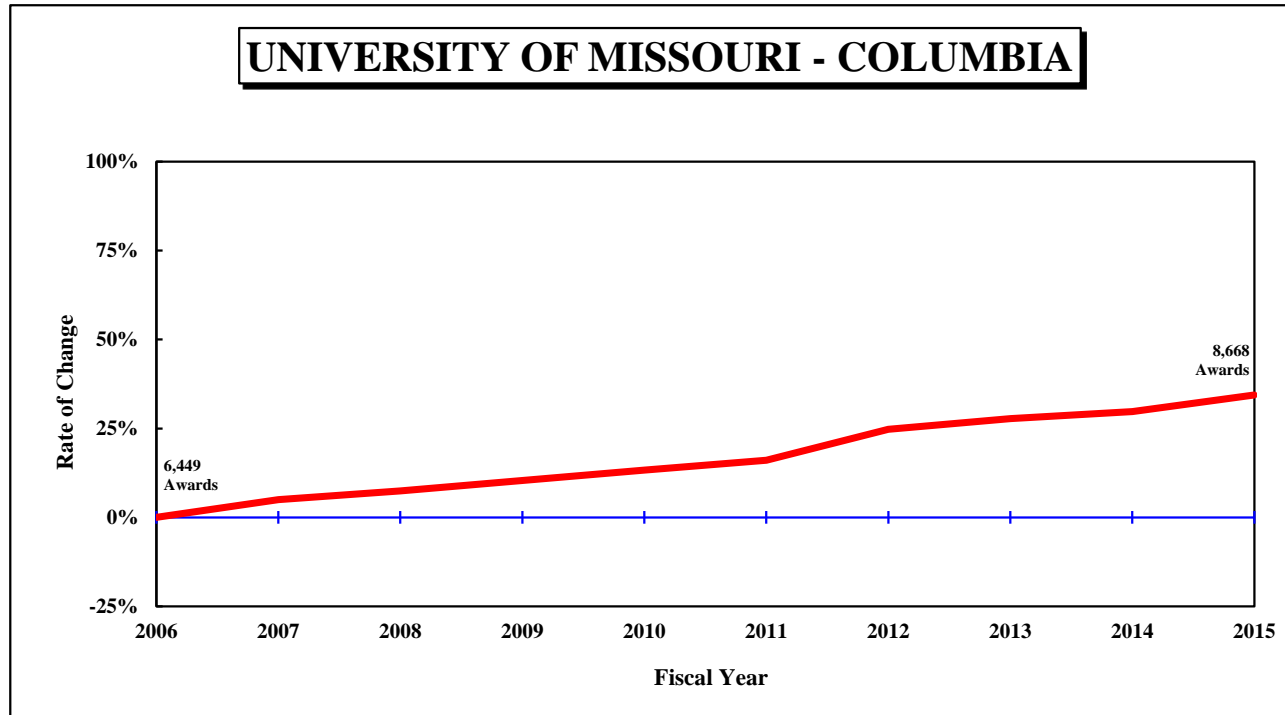


Table 1.1: Degrees and Certificates Awarded at the University of Missouri–Columbia, July 1, 2005 through June 30, 2015

DEGREE	FY	FY	FY	FY	FY	FY	FY	FY	FY	FY	3-Year	Average			Change in FY15 relative to the 10-Year Avg.
	2006	2007	2008	2009	2010	2011	2012	2013	2014	2015		5-Year	10-Year		
UNIVERSITY OF MISSOURI - COLUMBIA															
Bachelors	4,461	4,736	4,779	4,855	4,963	5,087	5,528	5,692	5,769	5,995	5,818.7	5,614.2	5,186.5	16%	
Graduate Certificate	84	68	69	88	142	162	179	225	226	239	230.0	206.2	148.2	61%	
First Professional	292	289	303	307	304	306	299	332	339	346	339.0	324.4	311.7	11%	
Masters	1,314	1,350	1,421	1,506	1,515	1,513	1,631	1,515	1,580	1,571	1,555.3	1,562.0	1,491.6	5%	
Education Specialist	21	36	34	57	59	53	43	63	65	82	70.0	61.2	51.3	60%	
Doctorate	277	293	326	306	322	365	367	411	390	435	412.0	393.6	349.2	25%	
Total, All Awards	6,449	6,772	6,932	7,119	7,305	7,486	8,047	8,238	8,369	8,668	8,425.0	8,161.6	7,538.5	15%	

Figure 1.2: Rate of Change in Total Degrees & Certificates Awarded at the University of Missouri–Kansas City, since 2006

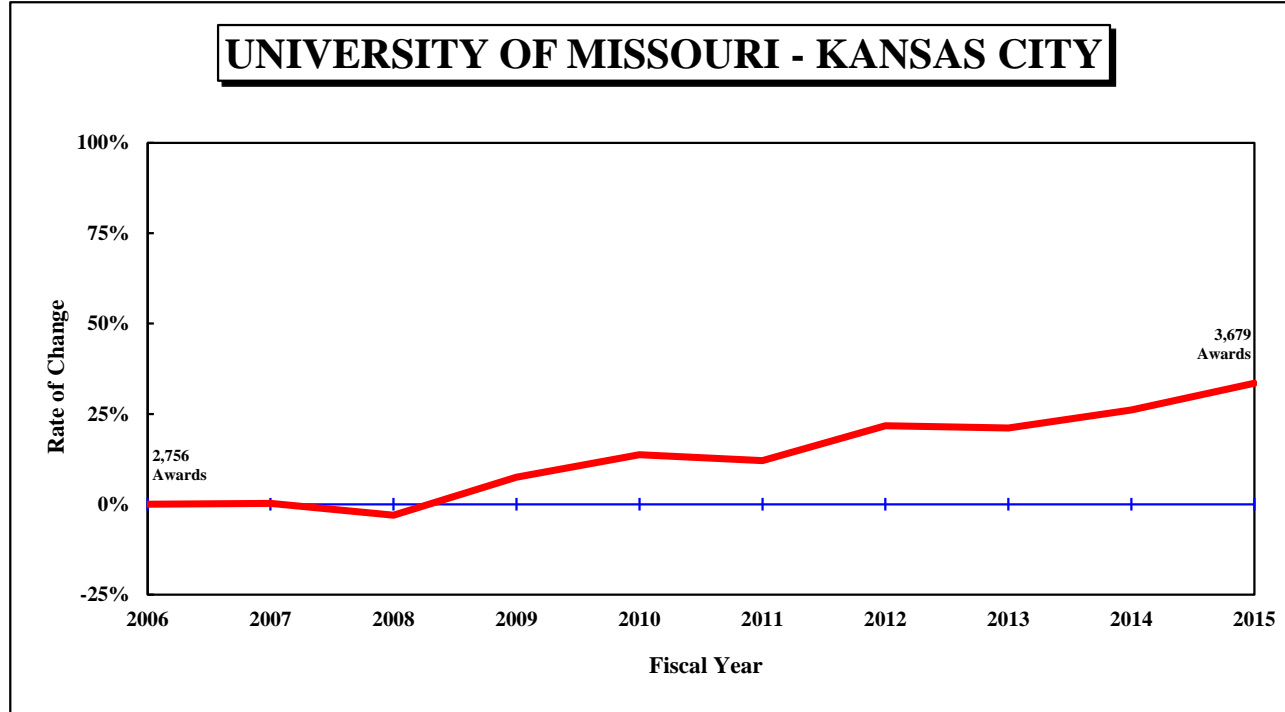


Table 1.1: Degrees and Certificates Awarded at the University of Missouri–Kansas City, July 1, 2005 through June 30, 2015

DEGREE	FY 2006	FY 2007	FY 2008	FY 2009	FY 2010	FY 2011	FY 2012	FY 2013	FY 2014	FY 2015	3-Year Average	5-Year Average	10-Year Average	Change in FY15 relative to the 10-Year Avg.
UNIVERSITY OF MISSOURI - KANSAS CITY														
Undergrad. Certificate										7	N/A	N/A	N/A	
Bachelors	1,425	1,428	1,289	1,496	1,633	1,523	1,749	1,759	1,803	1,812	1,791.3	1,729.2	1,591.7	14%
Graduate Certificate	23	19	24	20	18	24	29	33	33	50	38.7	33.8	27.3	83%
First Professional	415	438	408	412	455	468	444	475	459	489	474.3	467.0	446.3	10%
Masters	791	769	852	917	911	972	999	954	1,028	1,197	1,059.7	1,030.0	939.0	27%
Education Specialist	41	39	40	49	33	25	35	24	35	26	28.3	29.0	34.7	-25%
Doctorate	61	71	59	68	83	77	99	93	116	98	102.3	96.6	82.5	19%
Total, All Awards	2,756	2,764	2,672	2,962	3,133	3,089	3,355	3,338	3,474	3,679	3,497.0	3,387.0	3,122.2	18%

Figure 1.3: Rate of Change in Total Degrees & Certificates Awarded at the Missouri University of Science and Technology, since 2006

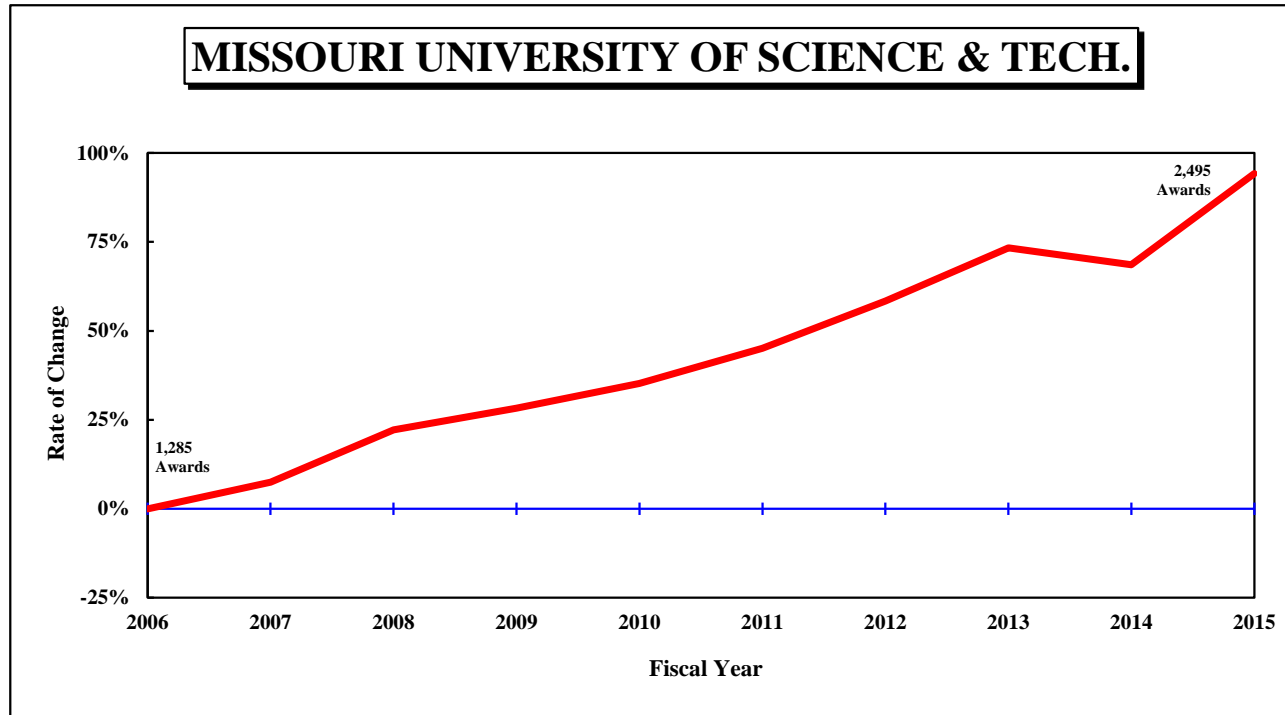


Table 1.1: Degrees and Certificates Awarded at the Missouri University of Science and Technology, July 1, 2005 through June 30, 2015

DEGREE	FY	FY	FY	FY	FY	FY	FY	FY	FY	FY	<u>Average</u>			Change in FY15 relative to the 10-Year Avg.
	2006	2007	2008	2009	2010	2011	2012	2013	2014	2015	3-Year	5-Year	10-Year	
MISSOURI UNIVERSITY OF SCIENCE AND TECHNOLOGY														
Undergrad. Certificate		1	3	2	1	4	2	0	3	14	5.7	4.6	N/A	
Bachelors	744	834	910	920	997	997	1,077	1,118	1,141	1,307	1,188.7	1,128.0	1,004.5	30%
Graduate Certificate	75	127	164	250	278	282	319	435	401	404	413.3	368.2	273.5	48%
Masters	392	356	430	426	411	517	567	579	551	675	601.7	577.8	490.4	38%
Doctorate	74	63	63	50	51	65	70	95	70	95	86.7	79.0	69.6	36%
Total, All Awards	1,285	1,381	1,570	1,648	1,738	1,865	2,035	2,227	2,166	2,495	2,296.0	2,157.6	1,841.0	36%

Figure 1.4: Rate of Change in Total Degrees & Certificates Awarded at the University of Missouri–St. Louis, since 2006

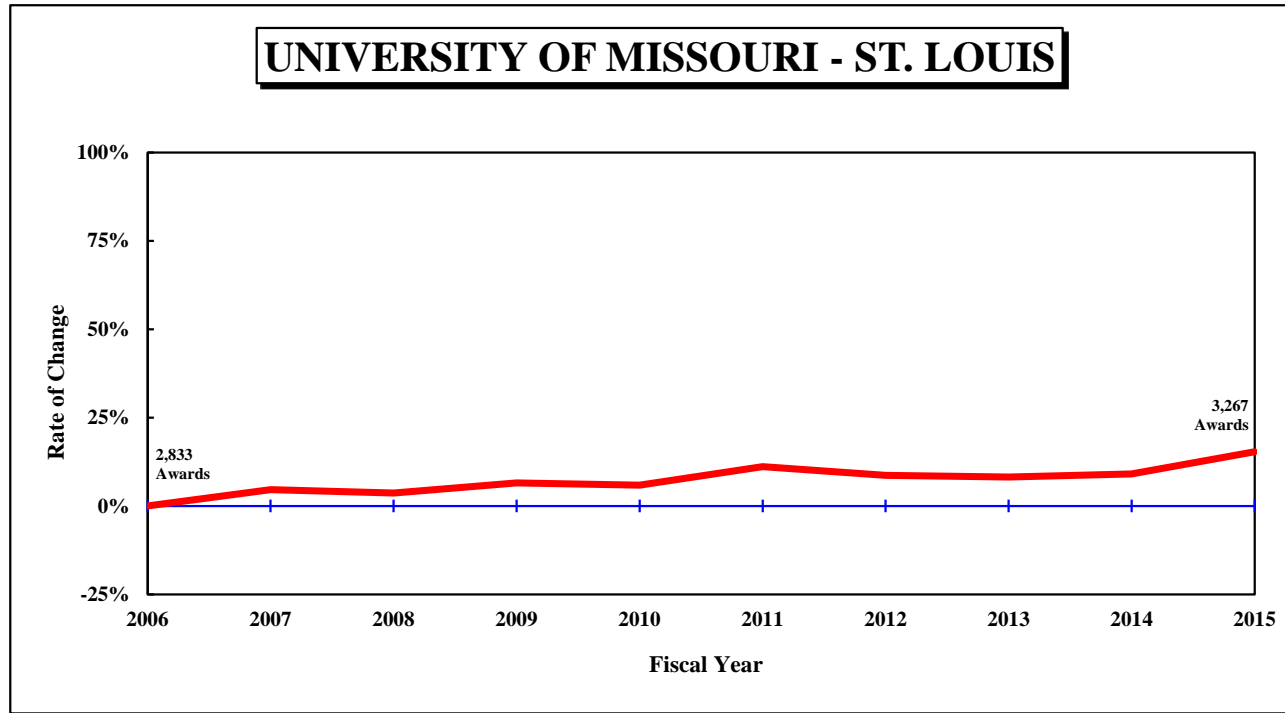


Table 1.1: Degrees and Certificates Awarded at the University of Missouri–St. Louis, July 1, 2005 through June 30, 2015

DEGREE	FY	FY	FY	FY	FY	FY	FY	FY	FY	FY	Average			Change in FY15 relative to the 10-Year Avg.	
	2006	2007	2008	2009	2010	2011	2012	2013	2014	2015	3-Year	5-Year	10-Year		
UNIVERSITY OF MISSOURI - ST. LOUIS															
Undergrad. Certificate									2	20	34	18.7	N/A	N/A	
Bachelors	1,905	2,039	2,016	2,018	2,011	2,092	1,963	1,974	2,020	2,246	2,080.0	2,059.0	2,028.4	11%	
Graduate Certificate	77	79	64	80	82	71	96	88	80	87	85.0	84.4	80.4	8%	
First Professional	34	44	38	44	41	44	47	40	39	41	40.0	42.2	41.2	0%	
Masters	730	718	729	771	771	868	872	871	854	761	828.7	845.2	794.5	-4%	
Education Specialist	29	31	28	42	31	22	26	28	13	14	18.3	20.6	26.4	-47%	
Doctorate	58	52	62	63	63	50	74	61	64	84	69.7	66.6	63.1	33%	
Total, All Awards	2,833	2,963	2,937	3,018	2,999	3,147	3,078	3,064	3,090	3,267	3,140.3	3,129.2	3,039.6	7%	

Figure 2.0: Rate of Change in Total Degrees Awarded, since 2006

UNIVERSITY OF MISSOURI SYSTEM

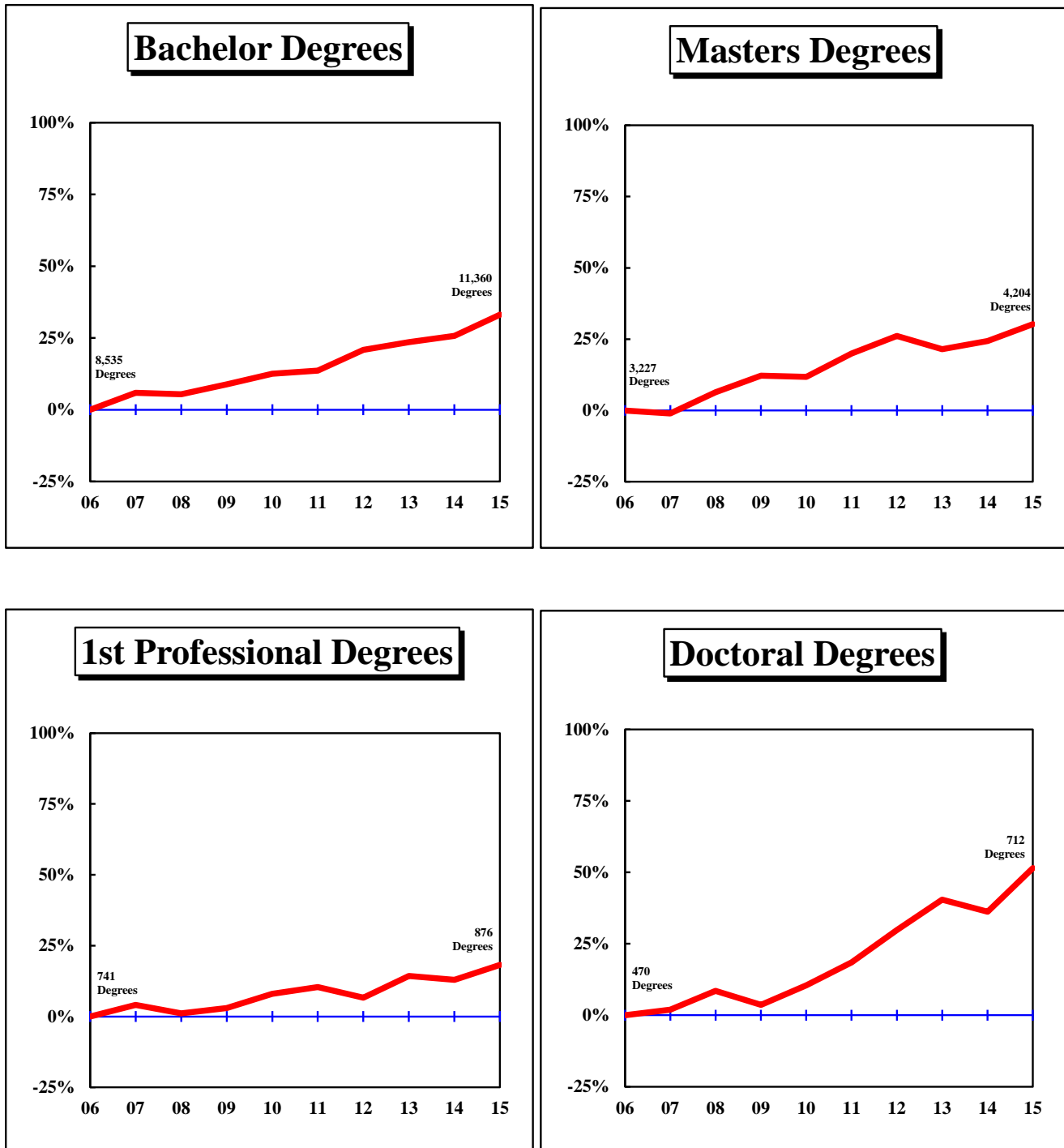


Figure 2.1: Rate of Change in Total Degrees Awarded by Campus, since 2006

UNIVERSITY OF MISSOURI-COLUMBIA

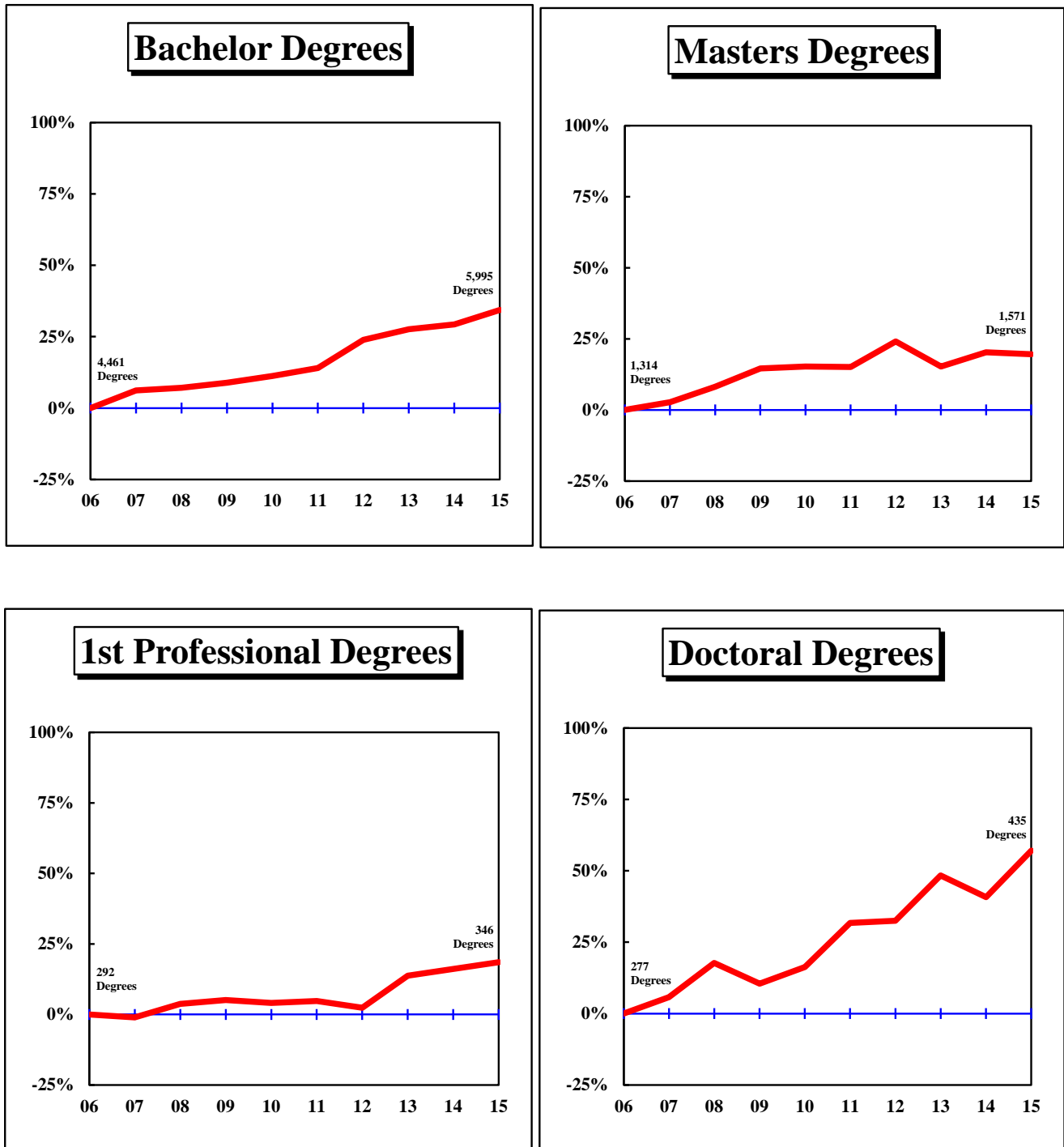


Figure 2.2: Rate of Change in Total Degrees Awarded by Campus, since 2006

UNIVERSITY OF MISSOURI-KANSAS CITY

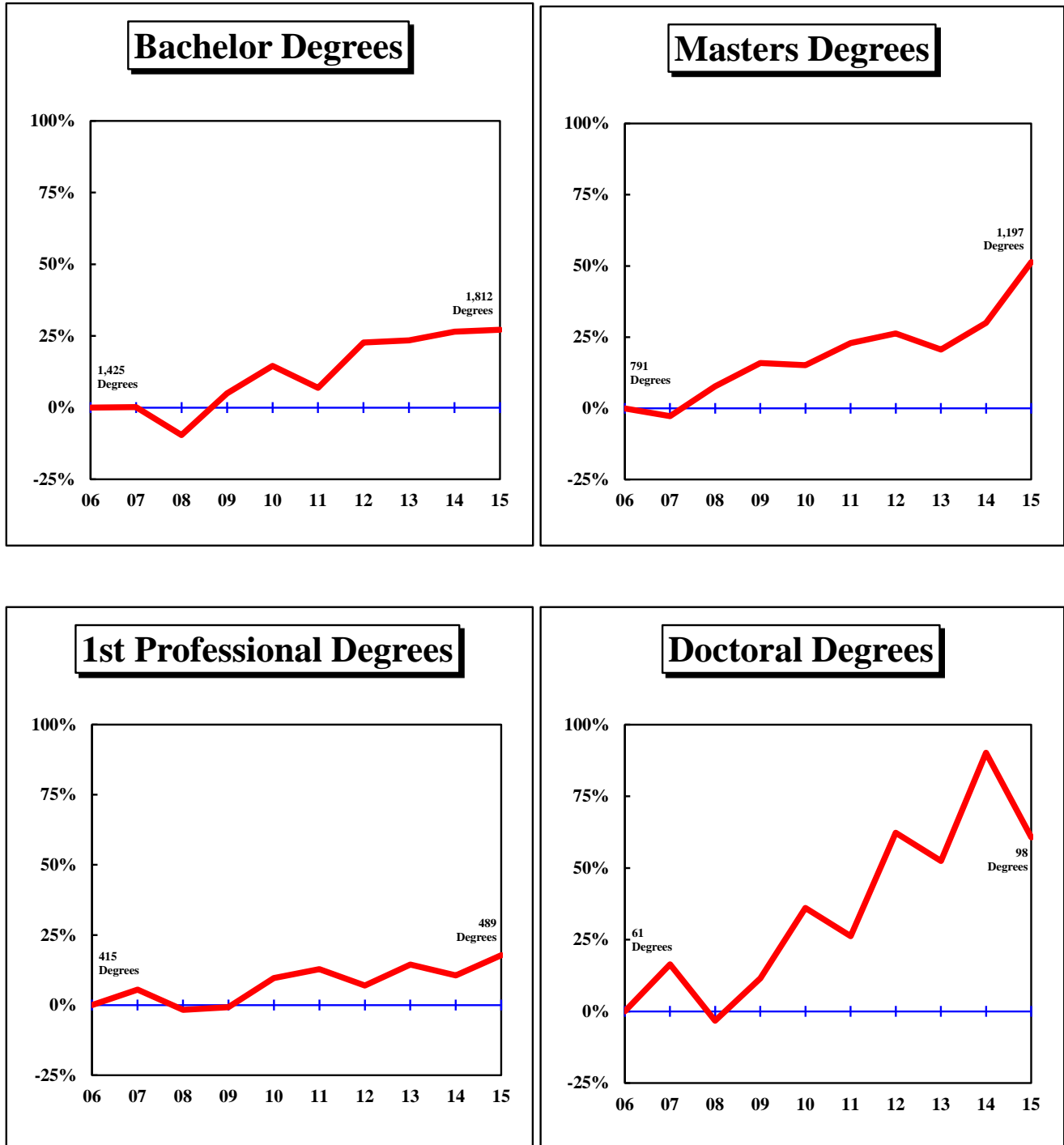


Figure 2.3: Rate of Change in Total Degrees Awarded by Campus, since 2006

MISSOURI UNIVERSITY OF SCIENCE AND TECHNOLOGY

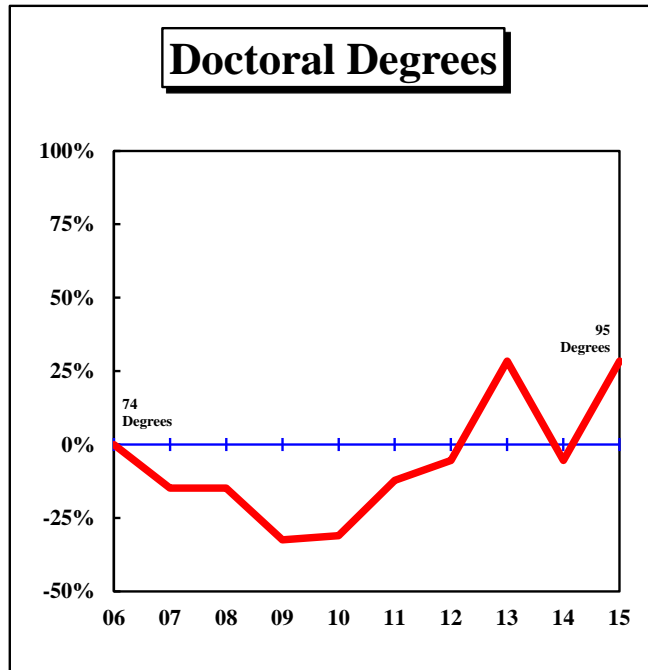
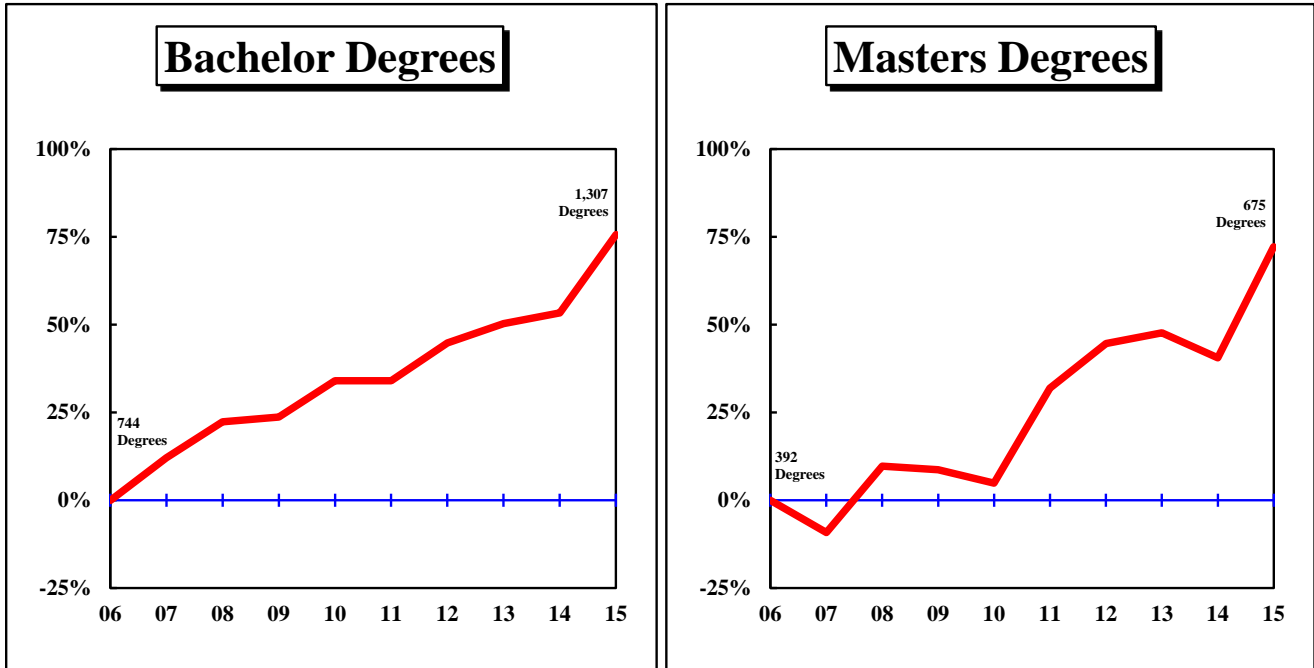


Figure 2.4: Rate of Change in Total Degrees Awarded by Campus, since 2006

UNIVERSITY OF MISSOURI-ST. LOUIS

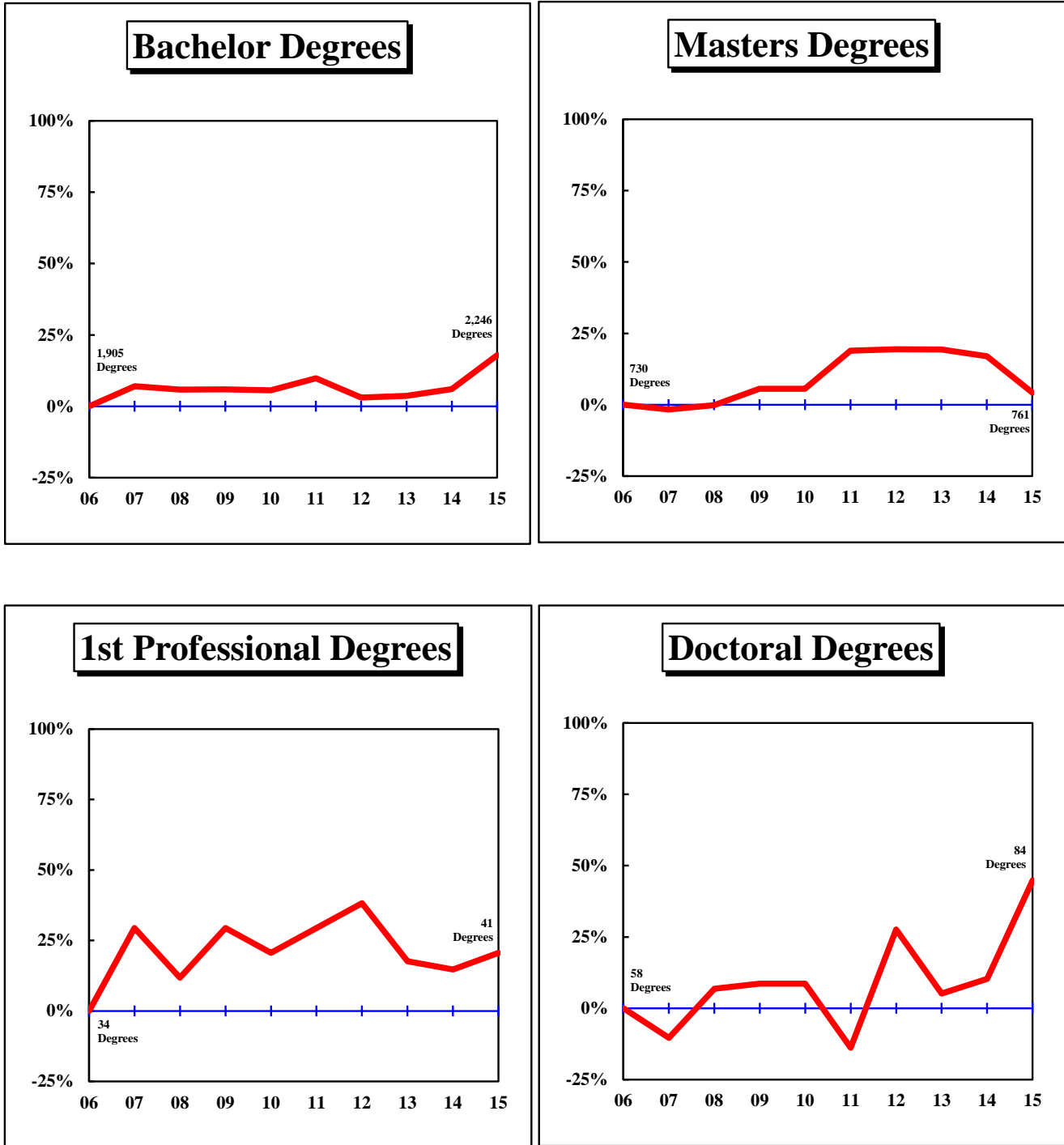


Table 2.1: Degrees and Certificates Awarded by Colleges at the University of Missouri–Columbia

COLLEGE/DEGREE	FY	FY	FY	FY	FY	FY	FY	FY	FY	FY	<u>Average</u>			Change in FY15 relative to the 10-Year Avg.
	2006	2007	2008	2009	2010	2011	2012	2013	2014	2015	3-Year	5-Year	10-Year	
AGRICULTURE, FOOD, AND NATURAL RESOURCES, COLLEGE OF														
Bachelors	356	344	367	391	383	400	432	491	460	491	480.7	454.8	411.5	19%
Masters	43	55	46	51	38	45	51	44	68	38	50.0	49.2	47.9	-21%
Doctorate	31	26	26	32	28	27	24	34	35	33	34.0	30.6	29.6	11%
All	430	425	439	474	449	472	507	569	563	562	564.7	534.6	489.0	15%
ARTS AND SCIENCE, COLLEGE OF														
Bachelors	1,633	1,775	1,725	1,741	1,744	1,812	1,961	2,046	1,902	1,963	1,970.3	1,936.8	1,830.2	7%
Masters	159	161	158	176	144	176	169	168	209	197	191.3	183.8	171.7	15%
Doctorate	100	87	108	97	104	98	119	106	113	141	120.0	115.4	107.3	31%
All	1,892	2,023	1,991	2,014	1,992	2,086	2,249	2,320	2,224	2,301	2,281.7	2,236.0	2,109.2	9%
BUSINESS, COLLEGE OF														
Bachelors	777	792	807	779	900	838	824	786	785	776	782.3	801.8	806.4	-4%
Grad. Certif.	51	50	30	9	15	27	23	21	24	25	23.3	24.0	27.5	-9%
Masters	197	213	214	204	237	220	217	231	229	242	234.0	227.8	220.4	10%
Doctorate	6	14	6	6	4	6	10	8	8	5	7.0	7.4	7.3	-32%
All	1,031	1,069	1,057	998	1,156	1,091	1,074	1,046	1,046	1,048	1,046.7	1,061.0	1,061.6	-1%
EDUCATION, COLLEGE OF														
Bachelors	283	269	249	246	239	246	274	284	305	280	289.7	277.8	267.5	5%
Masters	438	440	450	485	502	495	532	464	418	464	448.7	474.6	468.8	-1%
Ed. Specialist	21	36	34	57	59	53	43	63	65	82	70.0	61.2	51.3	60%
Doctorate	62	84	87	87	74	84	79	117	73	83	91.0	87.2	83.0	0%
All	804	829	820	875	874	878	928	928	861	909	899.3	900.8	870.6	4%
ENGINEERING, COLLEGE OF														
Bachelors	343	383	368	386	398	422	518	472	490	596	519.3	499.6	437.6	36%
Masters	107	60	93	90	78	109	100	120	131	165	138.7	125.0	105.3	57%
Doctorate	33	39	36	24	24	44	32	32	43	37	37.3	37.6	34.4	8%
All	483	482	497	500	500	575	650	624	664	798	695.3	662.2	577.3	38%
HEALTH PROFESSIONS, SCHOOL OF														
Bachelors	113	138	153	155	176	242	345	426	549	600	525.0	432.4	289.7	107%
Masters	67	56	96	82	48	40	55	51	58	60	56.3	52.8	61.3	-2%
Doctorate	0	0	0	0	36	43	38	45	43	44	44.0	42.6	24.9	77%
All	180	194	249	237	260	325	438	522	650	704	625.3	527.8	375.9	87%

Table 2.1: Degrees and Certificates Awarded by Colleges at the University of Missouri–Columbia (continued)

COLLEGE/DEGREE	FY	FY	FY	FY	FY	FY	FY	FY	FY	FY	3-Year	Average			Change in FY15 relative to the 10-Year Avg.
	2006	2007	2008	2009	2010	2011	2012	2013	2014	2015		5-Year	10-Year		
HUMAN ENVIRONMENTAL SCIENCES, COLLEGE OF															
Bachelors	250	234	278	298	274	275	279	309	318	269	298.7	290.0	278.4	-3%	
Grad. Certif.	1	0	0	0	0	0	0	0	0	0	0.0	0.0	0.1	-100%	
Masters	24	15	18	35	17	30	34	28	26	41	31.7	31.8	26.8	53%	
Doctorate	4	7	5	9	8	12	7	9	11	20	13.3	11.8	9.2	117%	
All	279	256	301	342	299	317	320	346	355	330	343.7	333.6	314.5	5%	
JOURNALISM, SCHOOL OF															
Bachelors	412	426	475	520	521	510	534	504	520	483	502.3	510.2	490.5	-2%	
Masters	70	69	91	107	112	88	111	73	91	67	77.0	86.0	87.9	-24%	
Doctorate	14	5	10	9	8	12	10	8	6	8	7.3	8.8	9.0	-11%	
All	496	500	576	636	641	610	655	585	617	558	586.7	605.0	587.4	-5%	
LAW, SCHOOL OF															
Grad. Certif.	18	0	21	16	37	39	26	41	25	21	29.0	30.4	24.4	-14%	
First Profes.	139	143	148	152	141	144	142	133	132	132	132.3	136.6	140.6	-6%	
Masters	7	13	15	13	7	19	8	14	8	12	11.3	12.2	11.6	3%	
All	164	156	184	181	185	202	176	188	165	165	172.7	179.2	176.6	-7%	
MEDICINE, SCHOOL OF															
First Profes.	89	87	89	85	99	93	87	98	97	99	98.0	94.8	92.3	7%	
Masters	29	25	32	36	41	48	51	42	56	43	47.0	48.0	40.3	7%	
Doctorate	5	8	14	10	11	7	14	13	5	9	9.0	9.6	9.6	-6%	
All	123	120	135	131	151	148	152	153	158	151	154.0	152.4	142.2	6%	
NATURAL RESOURCES, SCHOOL OF															
Bachelors	99	131	113	115	96	107	113	121	190	265	192.0	159.2	135.0	96%	
Masters	21	26	18	20	21	26	28	22	30	21	24.3	25.4	23.3	-10%	
Doctorate	7	9	10	7	5	7	8	10	3	5	6.0	6.6	7.1	-30%	
All	127	166	141	142	122	140	149	153	223	291	222.3	191.2	165.4	76%	
NURSING, SCHOOL OF															
Bachelors	166	201	187	190	190	193	211	211	217	232	220.0	212.8	199.8	16%	
Masters	28	33	40	50	60	43	43	42	36	29	35.7	38.6	40.4	-28%	
Doctorate	4	3	4	5	3	4	4	2	25	31	19.3	13.2	8.5	265%	
All	198	237	231	245	253	240	258	255	278	292	275.0	264.6	248.7	17%	

Table 2.1: Degrees and Certificates Awarded by Colleges at the University of Missouri–Columbia (continued)

COLLEGE/DEGREE	FY 2006	FY 2007	FY 2008	FY 2009	FY 2010	FY 2011	FY 2012	FY 2013	FY 2014	FY 2015	3-Year	<u>Average</u> 5-Year	10-Year	Change in FY15 relative to the 10-Year Avg.
PUBLIC AFFAIRS, SCHOOL OF														
Masters									60	52	N/A	N/A	N/A	
Doctorate									2	2	N/A	N/A	N/A	
All									62	54	N/A	N/A	N/A	
SOCIAL WORK, SCHOOL OF														
Bachelors	29	43	57	34	42	42	37	42	33	40	38.3	38.8	39.9	0%
Masters	65	112	58	64	129	51	97	87	70	71	76.0	75.2	80.4	-12%
Doctorate	0	1	4	9	4	3	2	1	3	2	2.0	2.2	2.9	-31%
All	94	156	119	107	175	96	136	130	106	113	116.3	116.2	123.2	-8%
VETERINARY MEDICINE, COLLEGE OF														
First Profes.	64	59	66	70	64	69	70	101	110	115	108.7	93.0	78.8	46%
Masters	4	11	11	8	7	8	9	5	9	5	6.3	7.2	7.7	-35%
Doctorate	1	4	2	2	1	5	2	2	3	0	1.7	2.4	2.2	-100%
All	69	74	79	80	72	82	81	108	122	120	116.7	102.6	88.7	35%
GRADUATE STUDIES														
Grad. Certif.	14	18	18	63	90	96	130	163	177	193	177.7	151.8	96.2	101%
Masters	55	61	81	85	74	115	126	124	81	64	89.7	102.0	86.6	-26%
Doctorate	10	6	14	9	12	13	18	24	17	15	18.7	17.4	13.8	9%
All	79	85	113	157	176	224	274	311	275	272	286.0	271.2	196.6	38%

Table 2.2: Degrees and Certificates Awarded by Colleges at the University of Missouri–Kansas City

COLLEGE/DEGREE	FY	FY	FY	FY	FY	FY	FY	FY	FY	FY	3-Year	Average		Change in FY15 relative to the 10-Year Avg.
	2006	2007	2008	2009	2010	2011	2012	2013	2014	2015		5-Year	10-Year	
ARTS AND SCIENCES, COLLEGE OF														
U-Grad. Certif.										7	N/A	N/A	N/A	
Bachelors	805	778	713	829	931	813	934	877	895	844	872.0	872.6	841.9	0%
Grad. Certif.	0	0	0	0	0	0	1	1	3	6	3.3	2.2	1.1	445%
Masters	189	161	198	187	173	210	252	184	227	228	213.0	220.2	200.9	13%
Doctorate	4	4	2	4	4	2	3	2	7	3	4.0	3.4	3.5	-14%
All	998	943	913	1,020	1,108	1,025	1,190	1,064	1,132	1,088	1,094.7	1,099.8	1,048.1	4%
BIOLOGICAL SCIENCES, SCHOOL OF														
Bachelors	64	74	58	61	84	71	95	101	99	86	95.3	90.4	79.3	8%
Masters	16	19	18	20	23	21	26	26	24	22	24.0	23.8	21.5	2%
All	80	93	76	81	107	92	121	127	123	108	119.3	114.2	100.8	7%
COMPUTING AND ENGINEERING, SCHOOL OF														
Bachelors	93	89	80	86	95	82	103	118	105	124	115.7	106.4	97.5	27%
Grad. Certif.								1	2	3	2.0	N/A	N/A	
Masters	75	89	112	144	135	194	121	122	124	274	173.3	167.0	139.0	97%
All	168	178	192	230	230	276	224	241	231	401	291.0	274.6	237.1	69%
DENTISTRY, SCHOOL OF														
Bachelors	28	31	28	27	31	34	35	36	30	34	33.3	33.8	31.4	8%
Grad. Certif.	23	19	22	17	17	17	17	17	17	17	17.0	17.0	18.3	-7%
First Profes.	92	101	100	102	96	98	99	106	103	104	104.3	102.0	100.1	4%
Masters	0	3	4	9	7	9	9	10	4	7	7.0	7.8	6.2	13%
All	143	154	154	155	151	158	160	169	154	162	161.7	160.6	156.0	4%
EDUCATION, SCHOOL OF														
Bachelors	107	124	98	118	116	107	113	108	112	87	102.3	105.4	109.0	-20%
Grad. Certif.							0	0	3	4	2.3	N/A	N/A	
Masters	196	156	147	184	152	131	144	156	152	175	161.0	151.6	159.3	10%
Ed. Specialist	41	39	40	49	33	25	35	24	35	26	28.3	29.0	34.7	-25%
Doctorate	4	5	10	9	5	4	13	9	21	11	13.7	11.6	9.1	21%
All	348	324	295	360	306	267	305	297	323	303	307.7	299.0	312.8	-3%

Table 2.2: Degrees and Certificates Awarded by Colleges at the University of Missouri–Kansas City (continued)

COLLEGE/DEGREE	FY	FY	FY	FY	FY	FY	FY	FY	FY	FY	Average			Change in FY15 relative to the 10-Year Avg.
	2006	2007	2008	2009	2010	2011	2012	2013	2014	2015	3-Year	5-Year	10-Year	
GRADUATE STUDIES, SCHOOL OF														
Grad. Certif.	0	0	0	1	0	2	5	2	2	5	3.0	3.2	1.7	194%
Doctorate	43	43	32	24	32	31	42	45	55	47	49.0	44.0	39.4	19%
All	43	43	32	25	32	33	47	47	57	52	52.0	47.2	41.1	27%
LAW, SCHOOL OF														
First Profes.	156	176	150	153	156	156	150	159	141	141	147.0	149.4	153.8	-8%
Masters	21	19	22	32	32	30	18	33	29	29	30.3	27.8	26.5	9%
All	177	195	172	185	188	186	168	192	170	170	177.3	177.2	180.3	-6%
MANAGEMENT, SCHOOL OF														
Bachelors	189	194	178	195	192	207	228	231	276	315	274.0	251.4	220.5	43%
Grad. Certif.								0	0	2	0.7	N/A	N/A	
Masters	181	213	228	240	254	257	276	263	292	288	281.0	275.2	249.2	16%
Doctorate							0	1	1	0	0.7	N/A	N/A	
All	370	407	406	435	446	464	504	495	569	605	556.3	527.4	470.1	29%
MEDICINE, SCHOOL OF														
Grad. Certif.				0	0	0	1	5	0	6	3.7	2.4	N/A	
First Profes.	90	84	86	87	92	101	89	88	90	119	99.0	97.4	92.6	29%
Masters			0	0	4	4	7	12	21	22	18.3	13.2	N/A	
All	90	84	86	87	96	105	97	105	111	147	121.0	113.0	100.8	46%
MUSIC AND DANCE, CONSERVATORY OF														
Bachelors	57	52	49	70	70	47	65	64	43	62	56.3	56.2	57.9	7%
Grad. Certif.	0	0	2	2	1	5	5	7	6	7	6.7	6.0	3.5	100%
Masters	41	47	47	43	56	38	39	42	25	36	34.3	36.0	41.4	-13%
Doctorate	9	14	12	21	20	21	16	21	18	14	17.7	18.0	16.6	-16%
All	107	113	110	136	147	111	125	134	92	119	115.0	116.2	119.4	0%
NURSING AND HEALTH STUDIES, SCHOOL OF														
Bachelors	76	76	80	102	107	148	167	217	239	260	238.7	206.2	147.2	77%
Masters	69	59	75	57	74	78	107	106	130	116	117.3	107.4	87.1	33%
Doctorate	1	5	3	10	22	19	25	15	14	23	17.3	19.2	13.7	68%
All	146	140	158	169	203	245	299	338	383	399	373.3	332.8	248.0	61%

Table 2.2: Degrees and Certificates Awarded by Colleges at the University of Missouri–Kansas City (continued)

COLLEGE/DEGREE	FY	FY	FY	FY	FY	FY	FY	FY	FY	FY	3-Year	<u>Average</u>			Change in FY15 relative to the 10-Year Avg.
	2006	2007	2008	2009	2010	2011	2012	2013	2014	2015		5-Year	10-Year	10-Year Avg.	
PHARMACY, SCHOOL OF															
Bachelors	6	10	5	8	7	14	9	7	4		N/A	N/A	N/A		
First Profes.	77	77	72	70	111	113	106	122	125	125	124.0	118.2	99.8	25%	
Masters	3	3	1	1	1	0	0				N/A	N/A	N/A		
All	86	90	78	79	119	127	115	129	129	125	127.7	125.0	107.7	16%	

IR&P/RS 8/15

Table 2.3: Degrees and Certificates Awarded by Colleges at the Missouri University of Science and Technology

COLLEGE/DEGREE	FY	FY	FY	FY	FY	FY	FY	FY	FY	FY	Average	Change in FY15 relative to the 10-Year Avg.	
	2006	2007	2008	2009	2010	2011	2012	2013	2014	2015			3-Year
ARTS, SCIENCES, AND BUSINESS, COLLEGE OF													
Bachelors										292	N/A	N/A	N/A
Grad. Certif.										39	N/A	N/A	N/A
Masters										88	N/A	N/A	N/A
Doctorate										16	N/A	N/A	N/A
All										435	N/A	N/A	N/A
ENGINEERING AND COMPUTING, COLLEGE OF													
U-Grad. Certif.										14	N/A	N/A	N/A
Bachelors										1,015	N/A	N/A	N/A
Grad. Certif.										365	N/A	N/A	N/A
Masters										587	N/A	N/A	N/A
Doctorate										79	N/A	N/A	N/A
All										2,060	N/A	N/A	N/A

In FY 2008, Missouri University of Science and Technology (formally University of Missouri-Rolla) eliminated the positions of College/School Dean.
 In FY 2015, the positions of College/School Dean were reestablished.

IR&P/RS 8/15

Table 2.4: Degrees and Certificates Awarded by Colleges at the University of Missouri–St. Louis

COLLEGE/DEGREE	FY	FY	FY	FY	FY	FY	FY	FY	FY	FY	3-Year	Average		Change in FY15 relative to the 10-Year Avg.	
	2006	2007	2008	2009	2010	2011	2012	2013	2014	2015		5-Year	10-Year		
ARTS AND SCIENCES, COLLEGE OF															
U-Grad. Certif.									2	20	33	18.3	N/A	N/A	
Bachelors	674	759	734	749	763	772	763	791	792	913	832.0	806.2	771.0	18%	
Grad. Certif.	26	34	18	30	35	20	30	27	9	23	19.7	21.8	25.2	-9%	
Masters	201	211	214	215	241	241	243	237	210	199	215.3	226.0	221.2	-10%	
Doctorate	30	30	24	34	35	24	33	29	36	32	32.3	30.8	30.7	4%	
All	931	1,034	990	1,028	1,074	1,057	1,069	1,086	1,067	1,200	1,117.7	1,095.8	1,053.6	14%	
BUSINESS ADMINISTRATION, COLLEGE OF															
Bachelors	542	579	598	573	545	579	505	440	507	516	487.7	509.4	538.4	-4%	
Grad. Certif.	16	16	18	12	11	13	19	7	16	20	14.3	15.0	14.8	35%	
Masters	133	163	163	210	162	171	204	189	185	169	181.0	183.6	174.9	-3%	
Doctorate	0	1	1	0	2	1	2	0	0	8	2.7	2.2	1.5	433%	
All	691	759	780	795	720	764	730	636	708	713	685.7	710.2	729.6	-2%	
EDUCATION, COLLEGE OF															
Bachelors	247	260	230	271	229	256	223	234	205	198	212.3	223.2	235.3	-16%	
Grad. Certif.	11	8	1	4	5	10	21	21	25	23	23.0	20.0	12.9	78%	
Masters	302	252	255	262	287	340	301	336	370	308	338.0	331.0	301.3	2%	
Ed. Specialist	29	31	28	42	31	22	26	28	13	14	18.3	20.6	26.4	-47%	
Doctorate	24	18	27	27	24	21	33	24	21	34	26.3	26.6	25.3	34%	
All	613	569	541	606	576	649	604	643	634	577	618.0	621.4	601.2	-4%	
FINE ARTS AND COMMUNICATION, COLLEGE OF															
U-Grad. Certif.								0	0	1	0.3	N/A	N/A		
Bachelors	219	210	210	188	214	223	207	225	218	247	230.0	224.0	216.1	14%	
Masters	16	19	26	14	22	17	28	4	14	12	10.0	15.0	17.2	-30%	
All	235	229	236	202	236	240	235	229	232	260	240.3	239.2	233.4	11%	
NURSING, COLLEGE OF															
Bachelors	160	163	186	181	200	201	206	224	246	284	251.3	232.2	205.1	38%	
Grad. Certif.			5	1	1	4	2	2	4	2	2.7	2.8	N/A		
Masters	46	48	51	43	41	72	63	79	52	55	62.0	64.2	55.0	0%	
Doctorate	4	2	9	2	2	4	6	7	7	9	7.7	6.6	5.2	73%	
All	210	213	251	227	244	281	277	312	309	350	323.7	305.8	267.4	31%	

Table 2.4: Degrees and Certificates Awarded by Colleges at the University of Missouri–St. Louis (continued)

COLLEGE/DEGREE	FY	FY	FY	FY	FY	FY	FY	FY	FY	FY	<u>Average</u>			Change in FY15 relative to the 10-Year Avg.
	2006	2007	2008	2009	2010	2011	2012	2013	2014	2015	3-Year	5-Year	10-Year	
OPTOMETRY, COLLEGE OF														
First Profes.	34	44	38	44	41	44	47	40	39	41	40.0	42.2	41.2	0%
Masters	0	0	0	1	2	1	0	1	1	0	0.7	0.6	0.6	-100%
Doctorate	0	1	1	0	0	0	0	1	0	1	0.7	0.4	0.4	150%
All	34	45	39	45	43	45	47	42	40	42	41.3	43.2	42.2	0%
ENGINEERING PROGRAM														
Bachelors	33	48	46	52	56	58	58	58	51	88	65.7	62.6	54.8	61%
GRADUATE SCHOOL														
Bachelors	30	20	12	4	4	3	1	2	1	0	1.0	1.4	7.7	-100%
Grad. Certif.	24	21	22	33	30	24	24	31	26	19	25.3	24.8	25.4	-25%
Masters	32	25	20	26	16	26	33	25	22	18	21.7	24.8	24.3	-26%
All	86	66	54	63	50	53	58	58	49	37	48.0	51.0	57.4	-36%

IR&P/RS 8/15