

**The 2015-2016 Report of Degrees Awarded  
by the University of Missouri**

Randy Sade  
Research Analyst

Office of Institutional Research  
University of Missouri System

September 2016

UM-IR 2016, Report 1

<http://www.umsystem.edu/ums/fa/ir/>

# The 2015-2016 Report of Degrees Awarded by the University of Missouri

## Executive Summary

This report includes graphs and tables of degrees awarded by each campus since FY 2007. The first table provides a summary of degrees by level for each campus, while the second table series gives the number of awards by the colleges of each campus. The *Department Detail Summary* reflects the number of degrees awarded by academic department. These tables also show the average number of degrees over a 3, 5, & 10-year period and the percent change in FY 2016 that is relative to the 10-year average.

The highlights of the report from the Table 1 series include:

- The University of Missouri System awarded a record 18,520 degrees and certificates, a 15% growth in FY 2016 relative to the 10-year average.
- Relative to the 10-year average, the number of FY 2016 doctorate degrees for the University of Missouri System increased 22% and graduate certificates increased 43%.
- Comparing FY 2016 degrees to the 10-year averages, the most notable increases are: bachelors degrees awarded are up 17% at UM-Columbia and 29% at Missouri S&T; master degrees are up 24% at UM-Kansas City and 32% at Missouri S&T; and doctorates are up 36% at UM-Kansas City and 49% at Missouri S&T.
- First Professional degrees at both UM-Kansas City and UM-St. Louis increased 6% when comparing FY 2016 to the 10-year average.
- Based on the 10-year averages, Graduate Certificates continues to grow in FY 2016 with a 39% increase at UM-Columbia and an increase of 121% at UM-Kansas City.

## Notes Regarding Use of the Report:

- The official annual reporting period is from July 1 to June 30 of the following calendar year. For example, FY16 includes summer and fall graduates from 2015 and the spring graduates of 2016.
- Please note the axis scale range when considering graphs. It may change from campus to campus.
- Previous year's tables may differ because tables in the report have been changed from the use of running averages to 3-, 5-, and 10-year averages.
- This report includes a 10-year average as related to FY 2016.
- Source for this report is the printed Completions Report.

## Technical Notes for Use with the Report:

### Footnotes

- Footnotes are of the utmost importance in reading tables in the appendix.

### Name Changes

- If a program name changes, the report history is changed to reflect the new name and is footnoted.
- If a degree name or description is changed, the report history is changed to the new description and is footnoted.
- If a department name changes, the report history is changed to the new description and NO footnotes are made.
- If a school or college changes, the report history is changed to the new description and NO footnotes are made.

### Program Moves

- If a program moves to another department or school, the data are reported as is – that is, report history is not changed and the new data are reported in the new department. A new footnote is added, i.e., program is moving. Eventually – when there are no more degrees for the old department, the old department is hidden in the report.
- If a program moves to another school or college, the data are reported as is – that is, report history is not changed and the new data are reported in the new school or college. A footnote is added, i.e., program is moving. Eventually – when there are no more degrees for the old program, the former program is hidden in the report.

Figure 1.0: Rate of Change in Total Degrees & Certificates Awarded for the University of Missouri System, since 2007

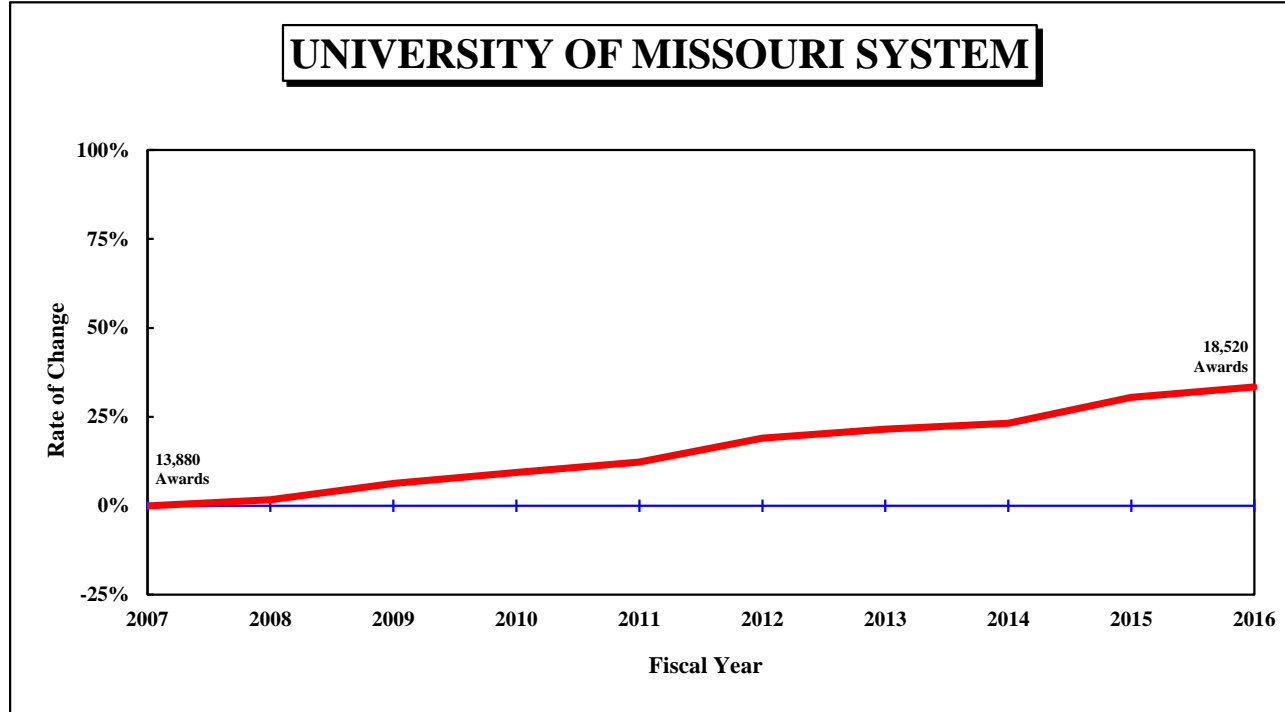


Table 1.0: Degrees and Certificates Awarded for the University of Missouri System, July 1, 2006 through June 30, 2016

DEGREE	FY	FY	FY	FY	FY	FY	FY	FY	FY	FY	3-Year	Average			Change in FY16 relative to the 10-Year Avg.	
	2007	2008	2009	2010	2011	2012	2013	2014	2015	2016		5-Year	10-Year			
<b>UNIVERSITY OF MISSOURI SYSTEM</b>																
Undergrad. Certificate	1	3	2	1	4	2	2	23	55	44	40.7	25.2	N/A			
Bachelors	9,037	8,994	9,289	9,604	9,699	10,317	10,543	10,733	11,360	11,654	11,249.0	10,921.4	10,123.0			15%
Graduate Certificate	293	321	438	520	539	623	781	740	780	839	786.3	752.6	587.4			43%
First Professional	771	749	763	800	818	790	847	837	876	833	848.7	836.6	808.4			3%
Masters	3,193	3,432	3,620	3,608	3,870	4,069	3,919	4,013	4,204	4,330	4,182.3	4,107.0	3,825.8			13%
Education Specialist	106	102	148	123	100	104	115	113	122	100	111.7	110.8	113.3			-12%
Doctorate	479	510	487	519	557	610	660	640	712	720	690.7	668.4	589.4			22%
<b>Total, All Awards</b>	<b>13,880</b>	<b>14,111</b>	<b>14,747</b>	<b>15,175</b>	<b>15,587</b>	<b>16,515</b>	<b>16,867</b>	<b>17,099</b>	<b>18,109</b>	<b>18,520</b>	<b>17,909.3</b>	<b>17,422.0</b>	<b>16,061.0</b>			<b>15%</b>

Figure 1.1: Rate of Change in Total Degrees & Certificates Awarded at the University of Missouri–Columbia, since 2007

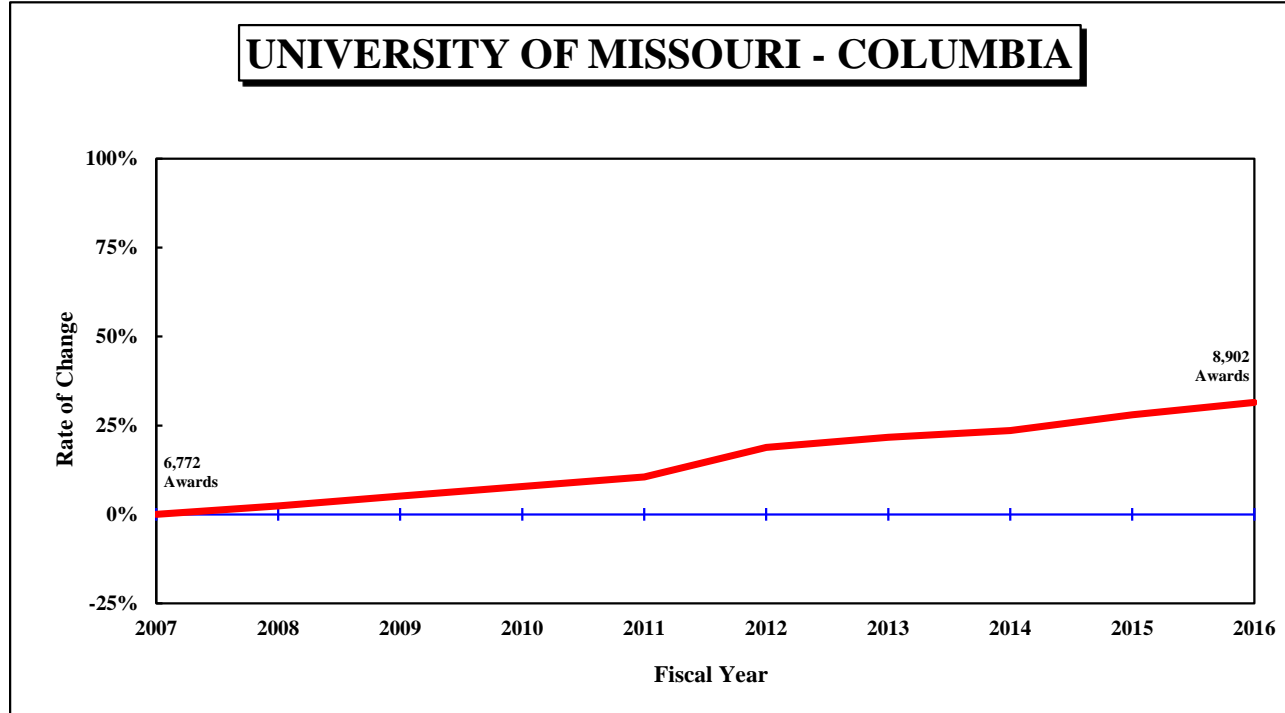


Table 1.1: Degrees and Certificates Awarded at the University of Missouri–Columbia, July 1, 2006 through June 30, 2016

DEGREE	FY 2007	FY 2008	FY 2009	FY 2010	FY 2011	FY 2012	FY 2013	FY 2014	FY 2015	FY 2016	3-Year	<u>Average</u> 5-Year	10-Year	Change in FY16 relative to the 10-Year Avg.
<b>UNIVERSITY OF MISSOURI - COLUMBIA</b>														
Bachelors	4,736	4,779	4,855	4,963	5,087	5,528	5,692	5,769	5,995	6,283	6,015.7	5,853.4	5,368.7	17%
Graduate Certificate	68	69	88	142	162	179	225	226	239	225	230.0	218.8	162.3	39%
First Professional	289	303	307	304	306	299	332	339	346	308	331.0	324.8	313.3	-2%
Masters	1,350	1,421	1,506	1,515	1,513	1,631	1,515	1,580	1,571	1,619	1,590.0	1,583.2	1,522.1	6%
Education Specialist	36	34	57	59	53	43	63	65	82	51	66.0	60.8	54.3	-6%
Doctorate	293	326	306	322	365	367	411	390	435	416	413.7	403.8	363.1	15%
<b>Total, All Awards</b>	<b>6,772</b>	<b>6,932</b>	<b>7,119</b>	<b>7,305</b>	<b>7,486</b>	<b>8,047</b>	<b>8,238</b>	<b>8,369</b>	<b>8,668</b>	<b>8,902</b>	<b>8,646.3</b>	<b>8,444.8</b>	<b>7,783.8</b>	<b>14%</b>

Figure 1.2: Rate of Change in Total Degrees & Certificates Awarded at the University of Missouri–Kansas City, since 2007

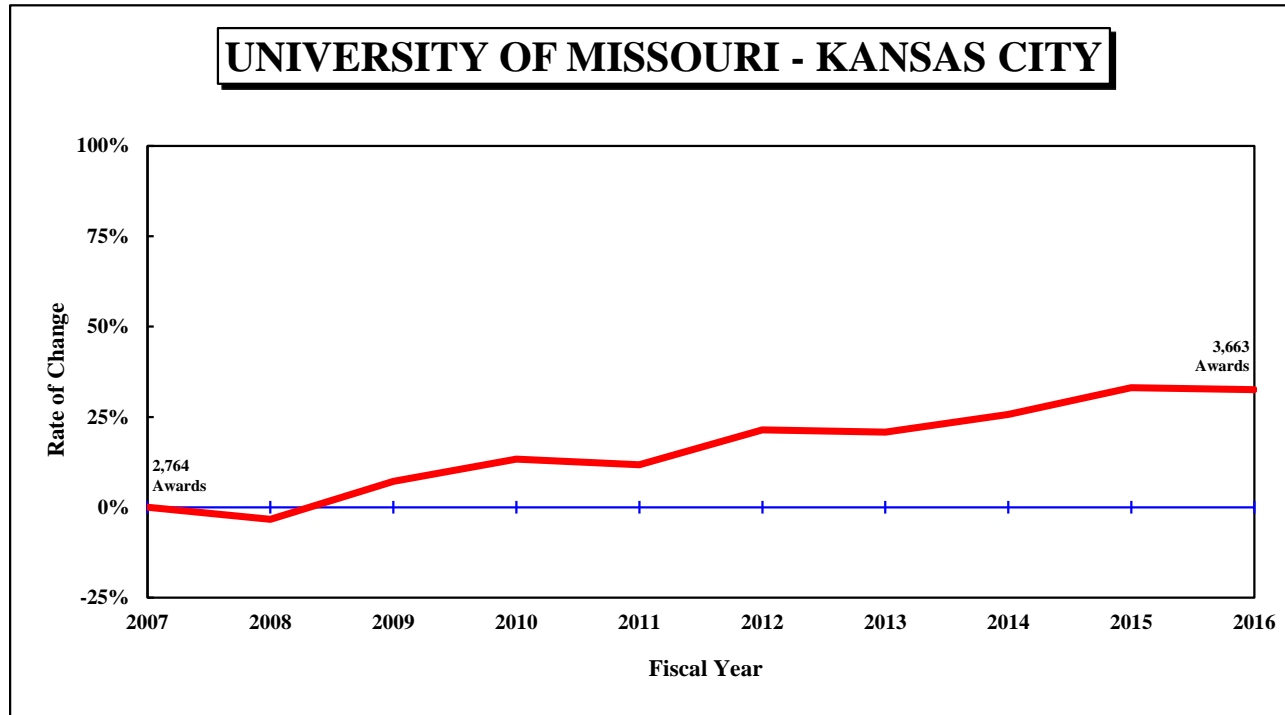


Table 1.1: Degrees and Certificates Awarded at the University of Missouri–Kansas City, July 1, 2006 through June 30, 2016

DEGREE	FY 2007	FY 2008	FY 2009	FY 2010	FY 2011	FY 2012	FY 2013	FY 2014	FY 2015	FY 2016	3-Year Average	5-Year Average	10-Year Average	Change in FY16 relative to the 10-Year Avg.
<b>UNIVERSITY OF MISSOURI - KANSAS CITY</b>														
Undergrad. Certificate									7	6	N/A	N/A	N/A	
Bachelors	1,428	1,289	1,496	1,633	1,523	1,749	1,759	1,803	1,812	1,741	1,785.3	1,772.8	1,623.3	7%
Graduate Certificate	19	24	20	18	24	29	33	33	50	71	51.3	43.2	32.1	121%
First Professional	438	408	412	455	468	444	475	459	489	480	476.0	469.4	452.8	6%
Masters	769	852	917	911	972	999	954	1,028	1,197	1,213	1,146.0	1,078.2	981.2	24%
Education Specialist	39	40	49	33	25	35	24	35	26	32	31.0	30.4	33.8	-5%
Doctorate	71	59	68	83	77	99	93	116	98	120	111.3	105.2	88.4	36%
<b>Total, All Awards</b>	<b>2,764</b>	<b>2,672</b>	<b>2,962</b>	<b>3,133</b>	<b>3,089</b>	<b>3,355</b>	<b>3,338</b>	<b>3,474</b>	<b>3,679</b>	<b>3,663</b>	<b>3,605.3</b>	<b>3,501.8</b>	<b>3,212.9</b>	<b>14%</b>

Figure 1.3: Rate of Change in Total Degrees & Certificates Awarded at the Missouri University of Science and Technology, since 2007

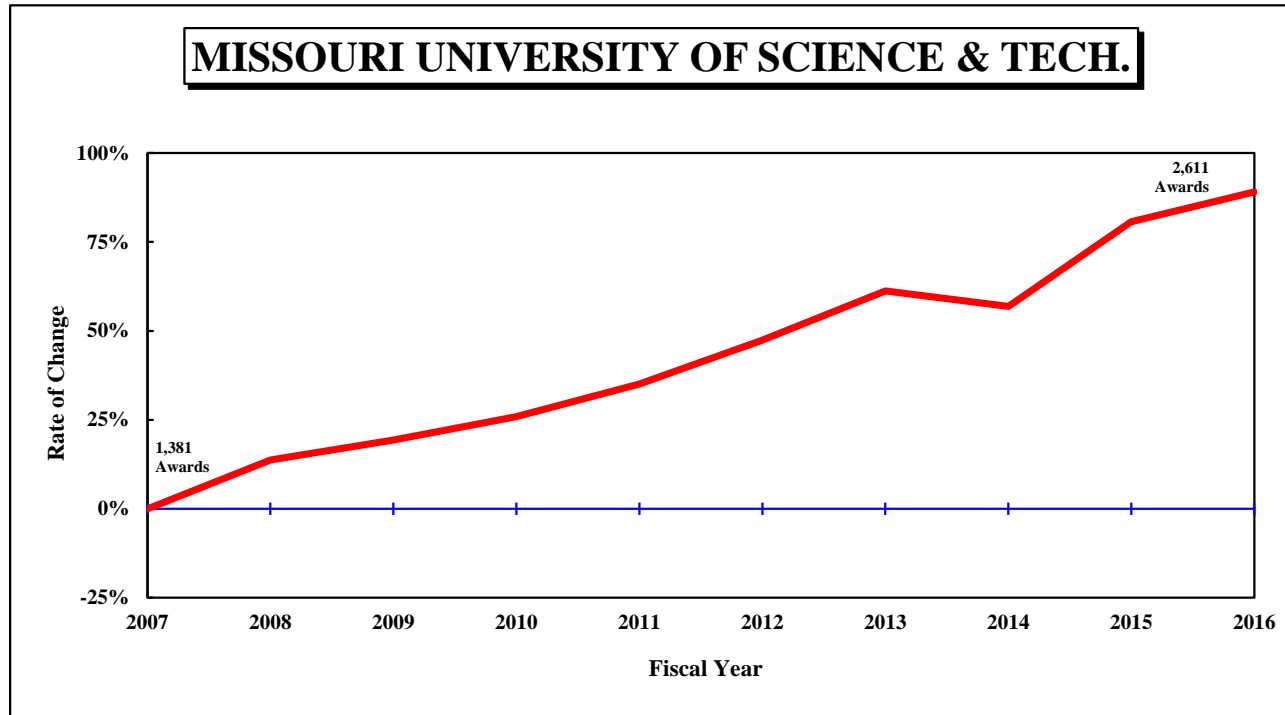


Table 1.1: Degrees and Certificates Awarded at the Missouri University of Science and Technology, July 1, 2006 through June 30, 2016

DEGREE	FY 2007	FY 2008	FY 2009	FY 2010	FY 2011	FY 2012	FY 2013	FY 2014	FY 2015	FY 2016	3-Year	<u>Average</u> 5-Year	10-Year	Change in FY16 relative to the 10-Year Avg.
<b>MISSOURI UNIVERSITY OF SCIENCE AND TECHNOLOGY</b>														
Undergrad. Certificate	1	3	2	1	4	2	0	3	14	9	8.7	5.6	3.9	131%
Bachelors	834	910	920	997	997	1,077	1,118	1,141	1,307	1,378	1,275.3	1,204.2	1,067.9	29%
Graduate Certificate	127	164	250	278	282	319	435	401	404	427	410.7	397.2	308.7	38%
Masters	356	430	426	411	517	567	579	551	675	688	638.0	612.0	520.0	32%
Doctorate	63	63	50	51	65	70	95	70	95	109	91.3	87.8	73.1	49%
<b>Total, All Awards</b>	<b>1,381</b>	<b>1,570</b>	<b>1,648</b>	<b>1,738</b>	<b>1,865</b>	<b>2,035</b>	<b>2,227</b>	<b>2,166</b>	<b>2,495</b>	<b>2,611</b>	<b>2,424.0</b>	<b>2,306.8</b>	<b>1,973.6</b>	<b>32%</b>

Figure 1.4: Rate of Change in Total Degrees & Certificates Awarded at the University of Missouri–St. Louis, since 2007

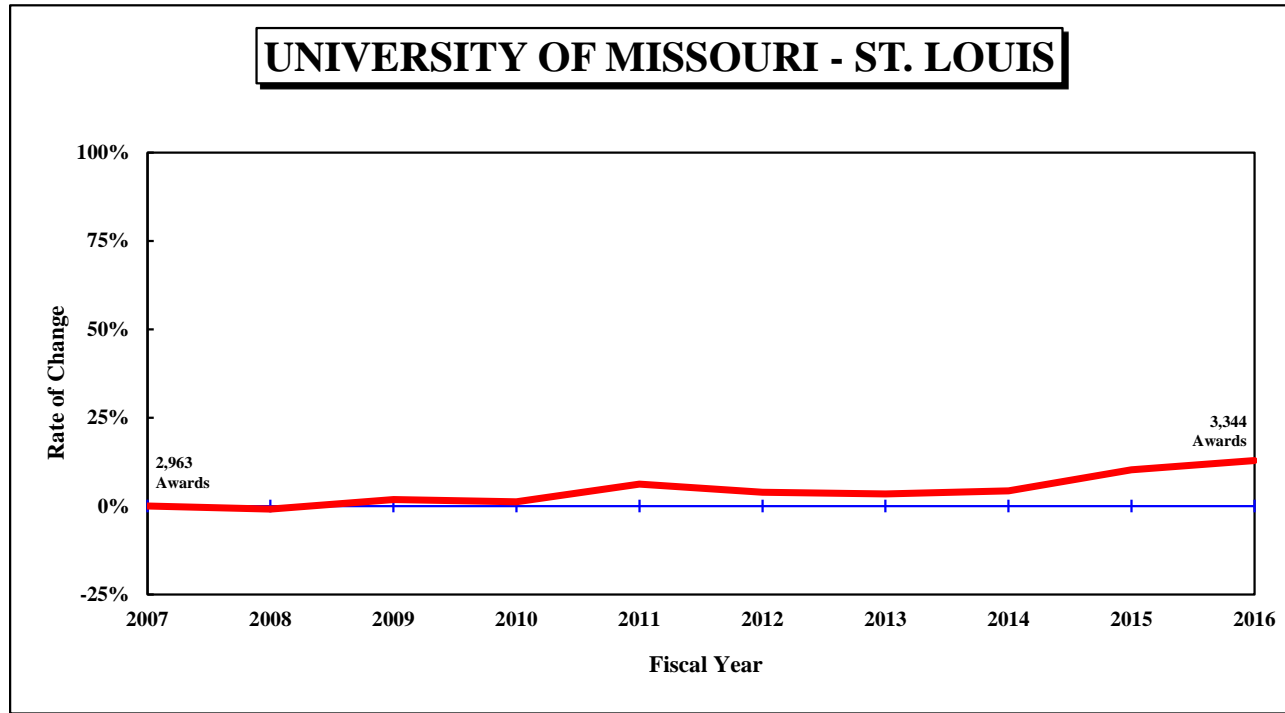


Table 1.1: Degrees and Certificates Awarded at the University of Missouri–St. Louis, July 1, 2006 through June 30, 2016

DEGREE	FY	FY	FY	FY	FY	FY	FY	FY	FY	FY	Average			Change in FY16 relative to the 10-Year Avg.
	2007	2008	2009	2010	2011	2012	2013	2014	2015	2016	3-Year	5-Year	10-Year	
<b>UNIVERSITY OF MISSOURI - ST. LOUIS</b>														
Undergrad. Certificate							2	20	34	29	27.7	N/A	N/A	
Bachelors	2,039	2,016	2,018	2,011	2,092	1,963	1,974	2,020	2,246	2,252	2,172.7	2,091.0	2,063.1	9%
Graduate Certificate	79	64	80	82	71	96	88	80	87	116	94.3	93.4	84.3	38%
First Professional	44	38	44	41	44	47	40	39	41	45	41.7	42.4	42.3	6%
Masters	718	729	771	771	868	872	871	854	761	810	808.3	833.6	802.5	1%
Education Specialist	31	28	42	31	22	26	28	13	14	17	14.7	19.6	25.2	-33%
Doctorate	52	62	63	63	50	74	61	64	84	75	74.3	71.6	64.8	16%
Total, All Awards	2,963	2,937	3,018	2,999	3,147	3,078	3,064	3,090	3,267	3,344	3,233.7	3,168.6	3,090.7	8%



Figure 2.0: Rate of Change in Total Degrees Awarded, since 2007

UNIVERSITY OF MISSOURI SYSTEM

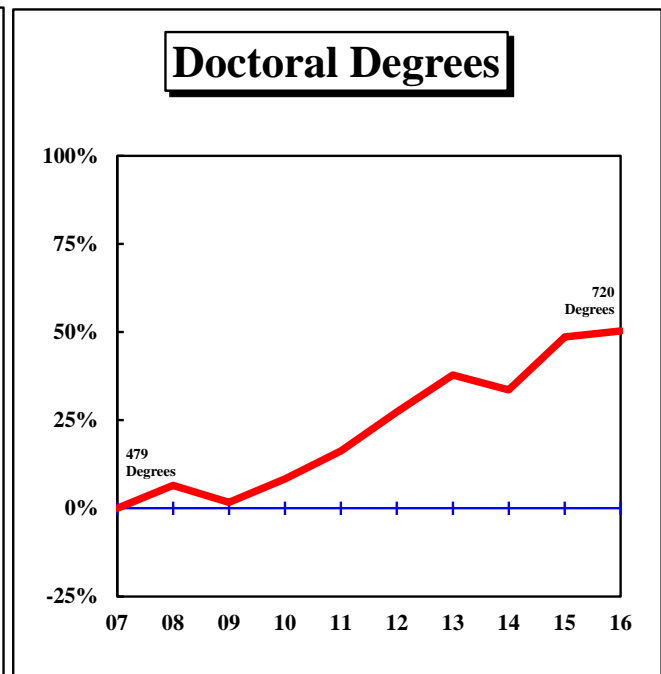
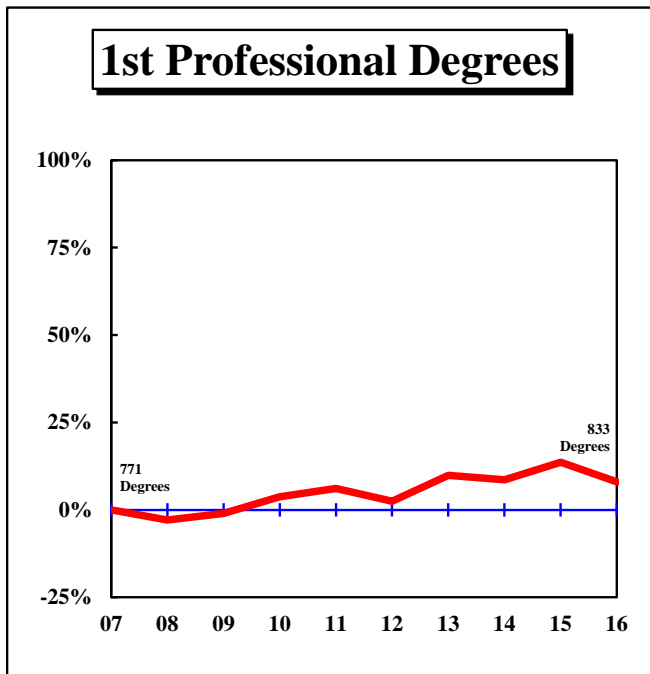
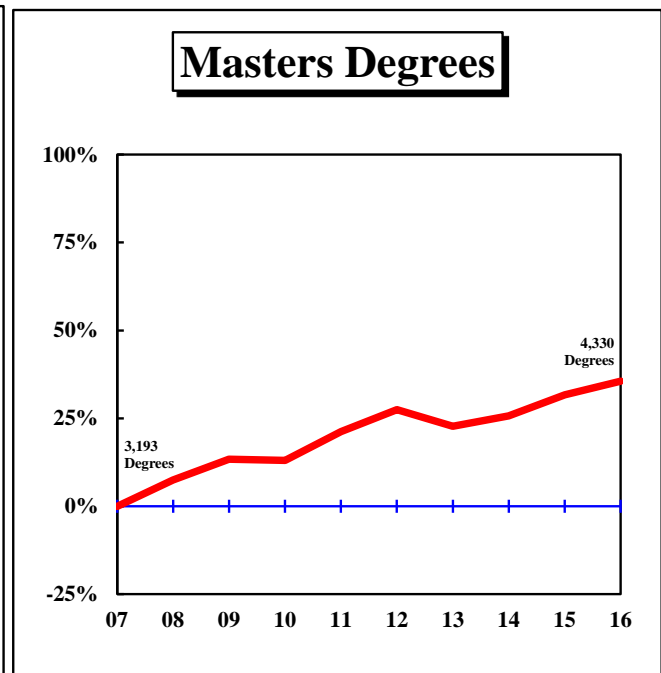
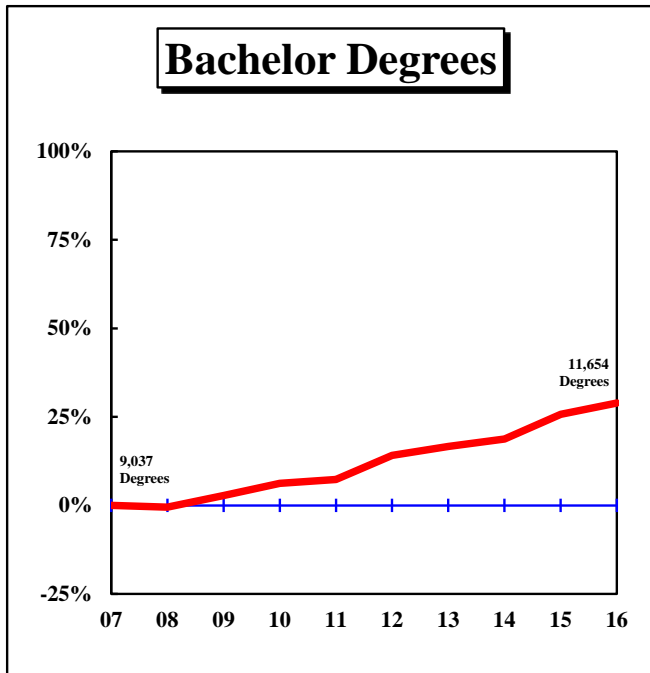


Figure 2.1: Rate of Change in Total Degrees Awarded by Campus, since 2007

UNIVERSITY OF MISSOURI-COLUMBIA

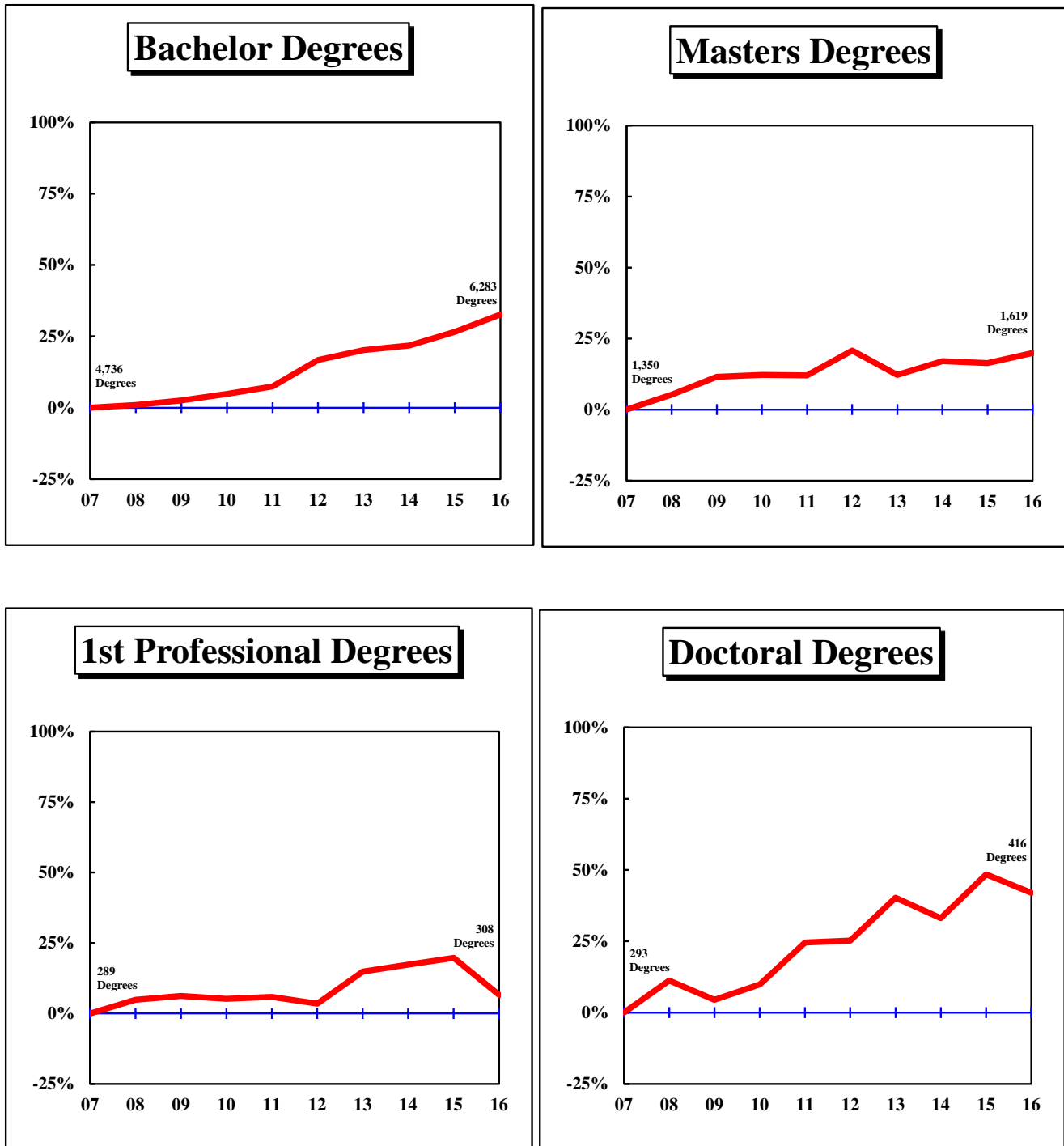


Figure 2.2: Rate of Change in Total Degrees Awarded by Campus, since 2007

UNIVERSITY OF MISSOURI-KANSAS CITY

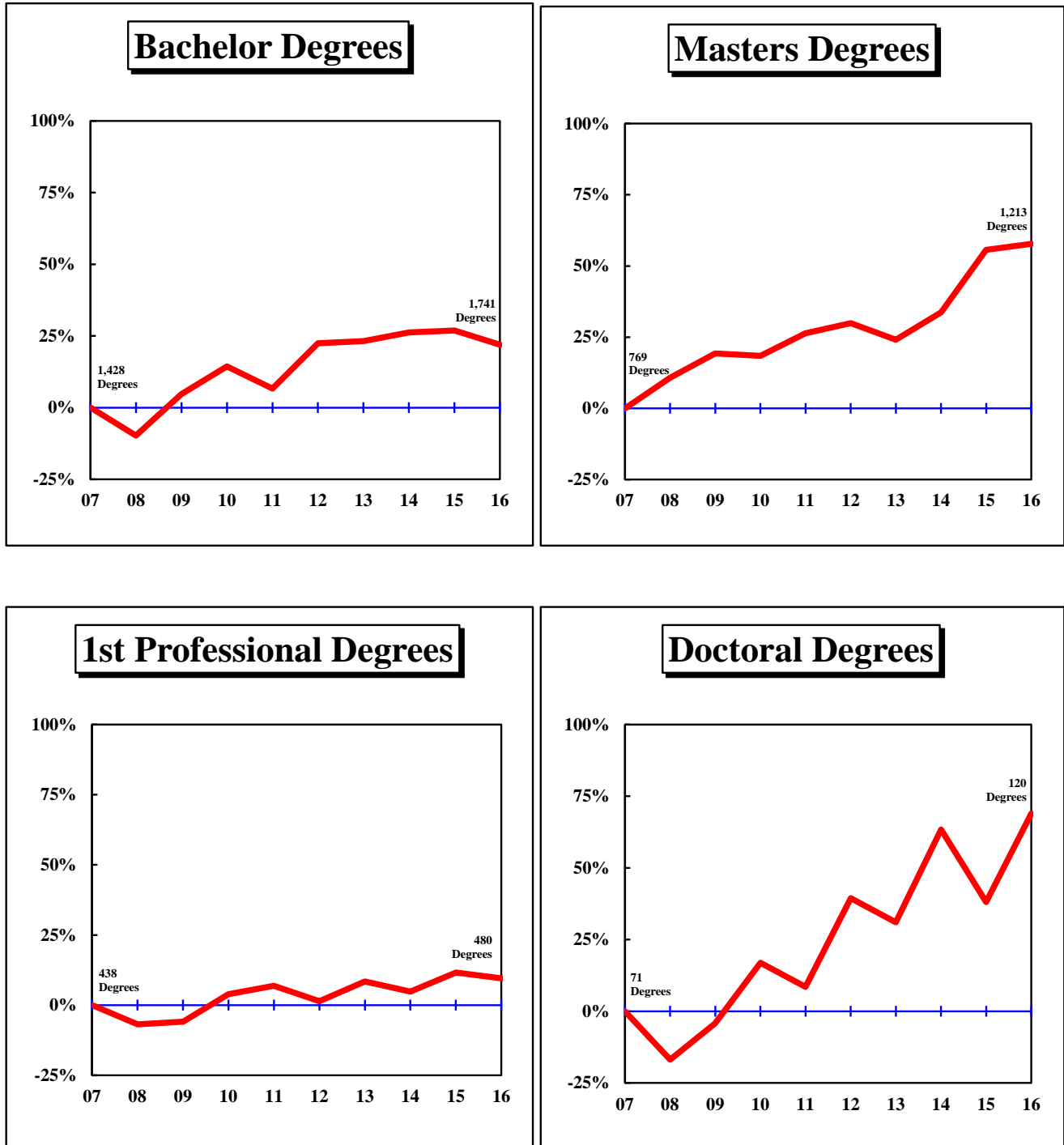


Figure 2.3: Rate of Change in Total Degrees Awarded by Campus, since 2007

MISSOURI UNIVERSITY OF SCIENCE AND TECHNOLOGY

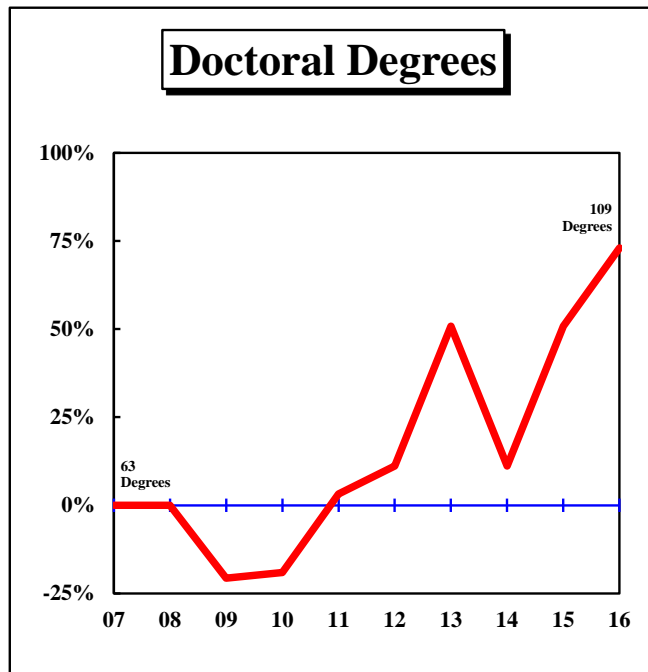
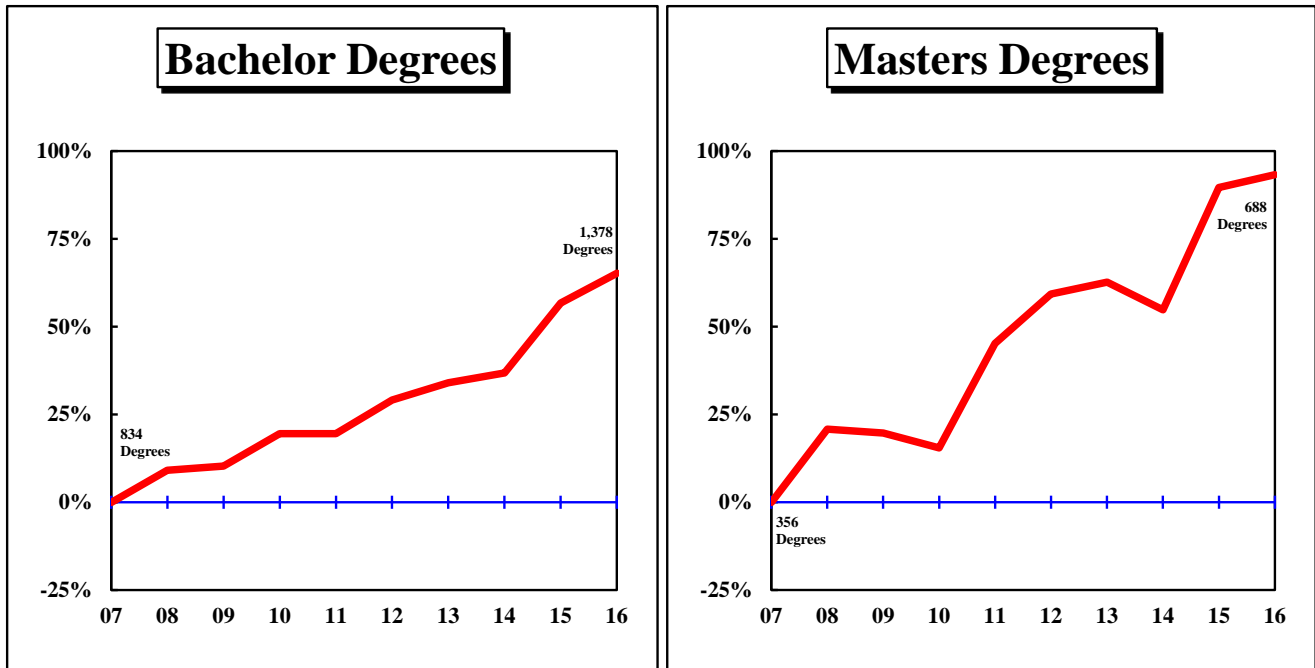


Figure 2.4: Rate of Change in Total Degrees Awarded by Campus, since 2007

UNIVERSITY OF MISSOURI–ST. LOUIS

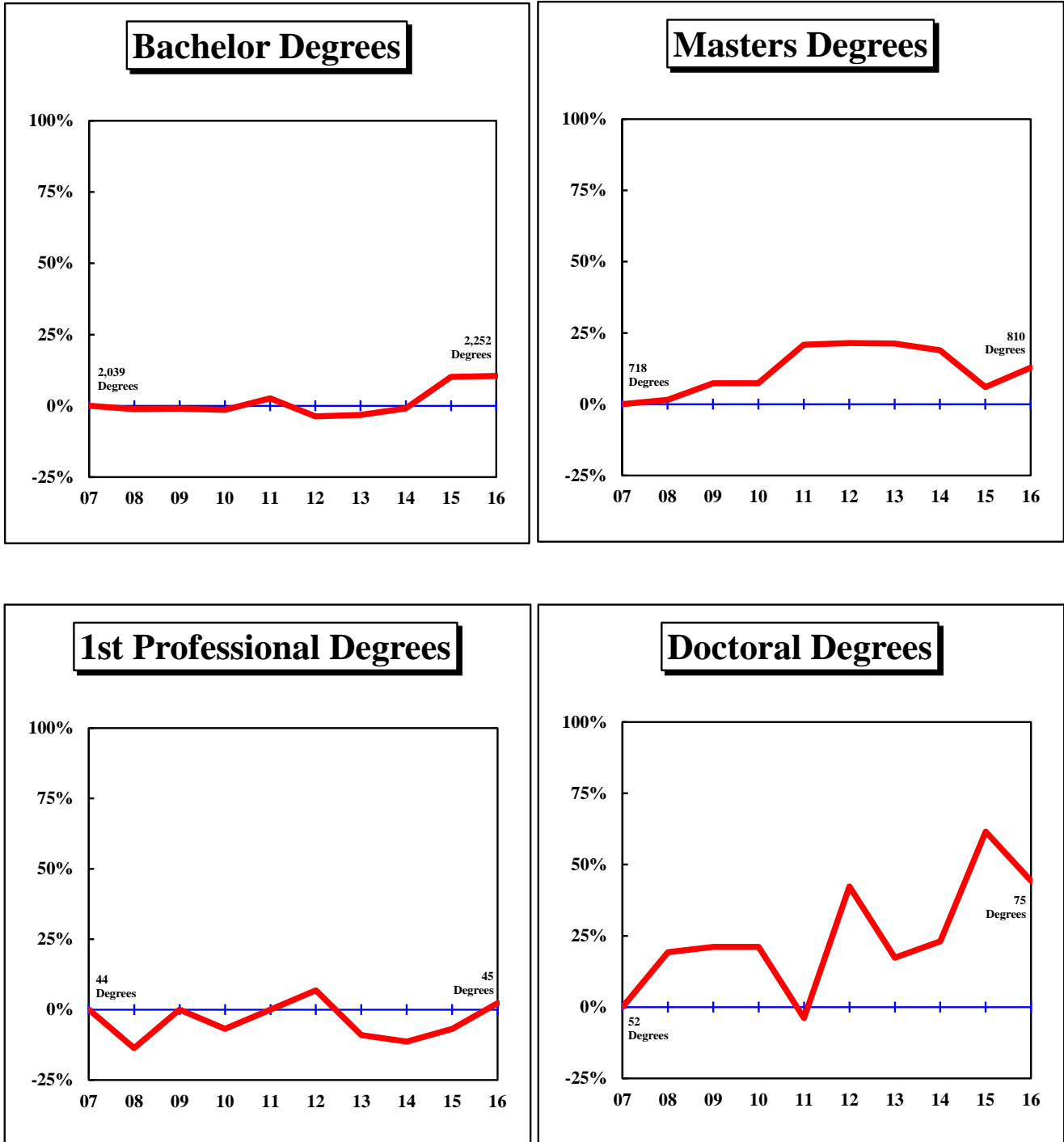


Table 2.1: Degrees and Certificates Awarded by Colleges at the University of Missouri–Columbia

COLLEGE/DEGREE	FY	FY	FY	FY	FY	FY	FY	FY	FY	FY	<u>Average</u>			Change in FY16 relative to the 10-Year Avg.
	2007	2008	2009	2010	2011	2012	2013	2014	2015	2016	3-Year	5-Year	10-Year	
<b>AGRICULTURE, FOOD, AND NATURAL RESOURCES, COLLEGE OF</b>														
Bachelors	344	367	391	383	400	432	491	460	491	528	493.0	480.4	428.7	23%
Masters	55	46	51	38	45	51	44	68	38	63	56.3	52.8	49.9	26%
Doctorate	26	26	32	28	27	24	34	35	33	28	32.0	30.8	29.3	-4%
All	425	439	474	449	472	507	569	563	562	619	581.3	564.0	507.9	22%
<b>ARTS AND SCIENCE, COLLEGE OF</b>														
Bachelors	1,775	1,725	1,741	1,744	1,812	1,961	2,046	1,902	1,963	1,913	1,926.0	1,957.0	1,858.2	3%
Masters	161	158	176	144	176	169	168	209	197	182	196.0	185.0	174.0	5%
Doctorate	87	108	97	104	98	119	106	113	141	124	126.0	120.6	109.7	13%
All	2,023	1,991	2,014	1,992	2,086	2,249	2,320	2,224	2,301	2,219	2,248.0	2,262.6	2,141.9	4%
<b>BUSINESS, COLLEGE OF</b>														
Bachelors	792	807	779	900	838	824	786	785	776	829	796.7	800.0	811.6	2%
Grad. Certif.	50	30	9	15	27	23	21	24	25	19	22.7	22.4	24.3	-22%
Masters	213	214	204	237	220	217	231	229	242	222	231.0	228.2	222.9	0%
Doctorate	14	6	6	4	6	10	8	8	5	11	8.0	8.4	7.8	41%
All	1,069	1,057	998	1,156	1,091	1,074	1,046	1,046	1,048	1,081	1,058.3	1,059.0	1,066.6	1%
<b>EDUCATION, COLLEGE OF</b>														
Bachelors	269	249	246	239	246	274	284	305	280	307	297.3	290.0	269.9	14%
Masters	440	450	485	502	495	532	464	418	464	457	446.3	467.0	470.7	-3%
Ed. Specialist	36	34	57	59	53	43	63	65	82	51	66.0	60.8	54.3	-6%
Doctorate	84	87	87	74	84	79	117	73	83	74	76.7	85.2	84.2	-12%
All	829	820	875	874	878	928	928	861	909	889	886.3	903.0	879.1	1%
<b>ENGINEERING, COLLEGE OF</b>														
Bachelors	383	368	386	398	422	518	472	490	596	693	593.0	553.8	472.6	47%
Masters	60	93	90	78	109	100	120	131	165	136	144.0	130.4	108.2	26%
Doctorate	39	36	24	24	44	32	32	43	37	36	38.7	36.0	34.7	4%
All	482	497	500	500	575	650	624	664	798	865	775.7	720.2	615.5	41%
<b>HEALTH PROFESSIONS, SCHOOL OF</b>														
Bachelors	138	153	155	176	242	345	426	549	600	702	617.0	524.4	348.6	101%
Masters	56	96	82	48	40	55	51	58	60	54	57.3	55.6	60.0	-10%
Doctorate	0	0	0	36	43	38	45	43	44	45	44.0	43.0	29.4	53%
All	194	249	237	260	325	438	522	650	704	801	718.3	623.0	438.0	83%

Table 2.1: Degrees and Certificates Awarded by Colleges at the University of Missouri–Columbia (continued)

COLLEGE/DEGREE	FY	FY	FY	FY	FY	FY	FY	FY	FY	FY	Average			Change in FY16 relative to the 10-Year Avg.
	2007	2008	2009	2010	2011	2012	2013	2014	2015	2016	3-Year	5-Year	10-Year	
<b>HUMAN ENVIRONMENTAL SCIENCES, COLLEGE OF</b>														
Bachelors	234	278	298	274	275	279	309	318	269	282	289.7	291.4	281.6	0%
Masters	15	18	35	17	30	34	28	26	41	38	35.0	33.4	28.2	35%
Doctorate	7	5	9	8	12	7	9	11	20	12	14.3	11.8	10.0	20%
All	256	301	342	299	317	320	346	355	330	332	339.0	336.6	319.8	4%
<b>JOURNALISM, SCHOOL OF</b>														
Bachelors	426	475	520	521	510	534	504	520	483	549	517.3	518.0	504.2	9%
Masters	69	91	107	112	88	111	73	91	67	103	87.0	89.0	91.2	13%
Doctorate	5	10	9	8	12	10	8	6	8	7	7.0	7.8	8.3	-16%
All	500	576	636	641	610	655	585	617	558	659	611.3	614.8	603.7	9%
<b>LAW, SCHOOL OF</b>														
Grad. Certif.	0	21	16	37	39	26	41	25	21	20	22.0	26.6	24.6	-19%
First Profes.	143	148	152	141	144	142	133	132	132	114	126.0	130.6	138.1	-17%
Masters	13	15	13	7	19	8	14	8	12	7	9.0	9.8	11.6	-40%
All	156	184	181	185	202	176	188	165	165	141	157.0	167.0	174.3	-19%
<b>MEDICINE, SCHOOL OF</b>														
First Profes.	87	89	85	99	93	87	98	97	99	87	94.3	93.6	92.1	-6%
Masters	25	32	36	41	48	51	42	56	43	65	54.7	51.4	43.9	48%
Doctorate	8	14	10	11	7	14	13	5	9	8	7.3	9.8	9.9	-19%
All	120	135	131	151	148	152	153	158	151	160	156.3	154.8	145.9	10%
<b>NATURAL RESOURCES, SCHOOL OF</b>														
Bachelors	131	113	115	96	107	113	121	190	265	232	229.0	184.2	148.3	56%
Masters	26	18	20	21	26	28	22	30	21	40	30.3	28.2	25.2	59%
Doctorate	9	10	7	5	7	8	10	3	5	7	5.0	6.6	7.1	-1%
All	166	141	142	122	140	149	153	223	291	279	264.3	219.0	180.6	54%
<b>NURSING, SCHOOL OF</b>														
Bachelors	201	187	190	190	193	211	211	217	232	198	215.7	213.8	203.0	-2%
Masters	33	40	50	60	43	43	42	36	29	20	28.3	34.0	39.6	-49%
Doctorate	3	4	5	3	4	4	2	25	31	38	31.3	20.0	11.9	219%
All	237	231	245	253	240	258	255	278	292	256	275.3	267.8	254.5	1%

Table 2.1: Degrees and Certificates Awarded by Colleges at the University of Missouri–Columbia (continued)

COLLEGE/DEGREE	FY	FY	FY	FY	FY	FY	FY	FY	FY	FY	Average	3-Year	5-Year	10-Year	Change in FY16 relative to the 10-Year Avg.
	2007	2008	2009	2010	2011	2012	2013	2014	2015	2016					
<b>PUBLIC AFFAIRS, SCHOOL OF</b>															
Masters									60	52	63	58.3	N/A	N/A	
Doctorate									2	2	1	1.7	N/A	N/A	
All									62	54	64	60.0	N/A	N/A	
<b>SOCIAL WORK, SCHOOL OF</b>															
Bachelors	43	57	34	42	42	37	42	33	40	50	41.0	40.4	42.0	19%	
Masters	112	58	64	129	51	97	87	70	71	76	72.3	80.2	81.5	-7%	
Doctorate	1	4	9	4	3	2	1	3	2	3	2.7	2.2	3.2	-6%	
All	156	119	107	175	96	136	130	106	113	129	116.0	122.8	126.7	2%	
<b>VETERINARY MEDICINE, COLLEGE OF</b>															
First Profes.	59	66	70	64	69	70	101	110	115	107	110.7	100.6	83.1	29%	
Masters	11	11	8	7	8	9	5	9	5	8	7.3	7.2	8.1	-1%	
Doctorate	4	2	2	1	5	2	2	3	0	2	1.7	1.8	2.3	-13%	
All	74	79	80	72	82	81	108	122	120	117	119.7	109.6	93.5	25%	
<b>GRADUATE STUDIES</b>															
Grad. Certif.	18	18	63	90	96	130	163	177	193	186	185.3	169.8	113.4	64%	
Masters	61	81	85	74	115	126	124	81	64	85	76.7	96.0	89.6	-5%	
Doctorate	6	14	9	12	13	18	24	17	15	20	17.3	18.8	14.8	35%	
All	85	113	157	176	224	274	311	275	272	291	279.3	284.6	217.8	34%	

UM-IR/RS 8/16



Table 2.2: Degrees and Certificates Awarded by Colleges at the University of Missouri–Kansas City

COLLEGE/DEGREE	FY	FY	FY	FY	FY	FY	FY	FY	FY	FY	3-Year	Average		Change in FY16 relative to the 10-Year Avg.	
	2007	2008	2009	2010	2011	2012	2013	2014	2015	2016		5-Year	10-Year		
<b>ARTS AND SCIENCES, COLLEGE OF</b>															
U-Grad. Certif.										7	6	N/A	N/A	N/A	
Bachelors	778	713	829	931	813	934	877	895	844	766	835.0	863.2	838.0	-9%	
Grad. Certif.	0	0	0	0	0	1	1	3	6	15	8.0	5.2	2.6	477%	
Masters	161	198	187	173	210	252	184	227	228	211	222.0	220.4	203.1	4%	
Doctorate	4	2	4	4	2	3	2	7	3	3	4.3	3.6	3.4	-12%	
All	943	913	1,020	1,108	1,025	1,190	1,064	1,132	1,088	1,001	1,073.7	1,095.0	1,048.4	-5%	
<b>BIOLOGICAL SCIENCES, SCHOOL OF</b>															
Bachelors	74	58	61	84	71	95	101	99	86	87	90.7	93.6	81.6	7%	
Masters	19	18	20	23	21	26	26	24	22	12	19.3	22.0	21.1	-43%	
All	93	76	81	107	92	121	127	123	108	99	110.0	115.6	102.7	-4%	
<b>COMPUTING AND ENGINEERING, SCHOOL OF</b>															
Bachelors	89	80	86	95	82	103	118	105	124	163	130.7	122.6	104.5	56%	
Grad. Certif.							1	2	3	2	2.3	N/A	N/A		
Masters	89	112	144	135	194	121	122	124	274	446	281.3	217.4	176.1	153%	
All	178	192	230	230	276	224	241	231	401	611	414.3	341.6	281.4	117%	
<b>DENTISTRY, SCHOOL OF</b>															
Bachelors	31	28	27	31	34	35	36	30	34	30	31.3	33.0	31.6	-5%	
Grad. Certif.	19	22	17	17	17	17	17	17	17	17	17.0	17.0	17.7	-4%	
First Profes.	101	100	102	96	98	99	106	103	104	105	104.0	103.4	101.4	4%	
Masters	3	4	9	7	9	9	10	4	7	6	5.7	7.2	6.8	-12%	
All	154	154	155	151	158	160	169	154	162	158	158.0	160.6	157.5	0%	
<b>EDUCATION, SCHOOL OF</b>															
Bachelors	124	98	118	116	107	113	108	112	87	66	88.3	97.2	104.9	-37%	
Grad. Certif.						0	0	3	4	18	8.3	5.0	N/A		
Masters	156	147	184	152	131	144	156	152	175	152	159.7	155.8	154.9	-2%	
Ed. Specialist	39	40	49	33	25	35	24	35	26	32	31.0	30.4	33.8	-5%	
Doctorate	5	10	9	5	4	13	9	21	11	13	15.0	13.4	10.0	30%	
All	324	295	360	306	267	305	297	323	303	281	302.3	301.8	306.1	-8%	

Table 2.2: Degrees and Certificates Awarded by Colleges at the University of Missouri–Kansas City (continued)

COLLEGE/DEGREE	FY	FY	FY	FY	FY	FY	FY	FY	FY	FY	<u>Average</u>			Change in FY16 relative to the 10-Year Avg.
	2007	2008	2009	2010	2011	2012	2013	2014	2015	2016	3-Year	5-Year	10-Year	
<b>GRADUATE STUDIES, SCHOOL OF</b>														
Grad. Certif.	0	0	1	0	2	5	2	2	5	9	5.3	4.6	2.6	246%
Doctorate	43	32	24	32	31	42	45	55	47	48	50.0	47.4	39.9	20%
All	43	32	25	32	33	47	47	57	52	57	55.3	52.0	42.5	34%
<b>LAW, SCHOOL OF</b>														
First Profes.	176	150	153	156	156	150	159	141	141	159	147.0	150.0	154.1	3%
Masters	19	22	32	32	30	18	33	29	29	25	27.7	26.8	26.9	-7%
All	195	172	185	188	186	168	192	170	170	184	174.7	176.8	181.0	2%
<b>MANAGEMENT, SCHOOL OF</b>														
Bachelors	194	178	195	192	207	228	231	276	315	307	299.3	271.4	232.3	32%
Grad. Certif.							0	0	2	3	1.7	N/A	N/A	
Masters	213	228	240	254	257	276	263	292	288	248	276.0	273.4	255.9	-3%
Doctorate						0	1	1	0	2	1.0	0.8	N/A	
All	407	406	435	446	464	504	495	569	605	560	578.0	546.6	489.1	14%
<b>MEDICINE, SCHOOL OF</b>														
Grad. Certif.			0	0	0	1	5	0	6	6	4.0	3.6	N/A	
First Profes.	84	86	87	92	101	89	88	90	119	94	101.0	96.0	93.0	1%
Masters		0	0	4	4	7	12	21	22	37	26.7	19.8	N/A	
All	84	86	87	96	105	97	105	111	147	137	131.7	119.4	105.5	30%
<b>MUSIC AND DANCE, CONSERVATORY OF</b>														
Bachelors	52	49	70	70	47	65	64	43	62	52	52.3	57.2	57.4	-9%
Grad. Certif.	0	2	2	1	5	5	7	6	7	1	4.7	5.2	3.6	-72%
Masters	47	47	43	56	38	39	42	25	36	49	36.7	38.2	42.2	16%
Doctorate	14	12	21	20	21	16	21	18	14	26	19.3	19.0	18.3	42%
All	113	110	136	147	111	125	134	92	119	128	113.0	119.6	121.5	5%
<b>NURSING AND HEALTH STUDIES, SCHOOL OF</b>														
Bachelors	76	80	102	107	148	167	217	239	260	270	256.3	230.6	166.6	62%
Masters	59	75	57	74	78	107	106	130	116	27	91.0	97.2	82.9	-67%
Doctorate	5	3	10	22	19	25	15	14	23	28	21.7	21.0	16.4	71%
All	140	158	169	203	245	299	338	383	399	325	369.0	348.8	265.9	22%

Table 2.2: Degrees and Certificates Awarded by Colleges at the University of Missouri–Kansas City (continued)

COLLEGE/DEGREE	FY	FY	FY	FY	FY	FY	FY	FY	FY	FY	3-Year	<u>Average</u>			Change in FY16 relative to the 10-Year Avg.
	2007	2008	2009	2010	2011	2012	2013	2014	2015	2016		5-Year	10-Year	10-Year Avg.	
<b>PHARMACY, SCHOOL OF</b>															
Bachelors	10	5	8	7	14	9	7	4			N/A	N/A	N/A		
First Profes.	77	72	70	111	113	106	122	125	125	122	124.0	120.0	104.3	17%	
Masters	3	1	1	1	0	0					N/A	N/A	N/A		
All	90	78	79	119	127	115	129	129	125	122	125.3	124.0	111.3	10%	

UM-IR/RS 8/16

Table 2.3: Degrees and Certificates Awarded by Colleges at the Missouri University of Science and Technology

COLLEGE/DEGREE	FY	FY	FY	FY	FY	FY	FY	FY	FY	FY	Average			Change in FY16 relative to the 10-Year Avg.
	2007	2008	2009	2010	2011	2012	2013	2014	2015	2016	3-Year	5-Year	10-Year	
<b>ARTS, SCIENCES, AND BUSINESS, COLLEGE OF</b>														
Bachelors									292	287	N/A	N/A	N/A	
Grad. Certif.									39	43	N/A	N/A	N/A	
Masters									88	90	N/A	N/A	N/A	
Doctorate									16	24	N/A	N/A	N/A	
All									435	444	N/A	N/A	N/A	
<b>ENGINEERING AND COMPUTING, COLLEGE OF</b>														
U-Grad. Certif.									14	9	N/A	N/A	N/A	
Bachelors									1,015	1,091	N/A	N/A	N/A	
Grad. Certif.									365	384	N/A	N/A	N/A	
Masters									587	598	N/A	N/A	N/A	
Doctorate									79	85	N/A	N/A	N/A	
All									2,060	2,167	N/A	N/A	N/A	

In FY 2008, Missouri University of Science and Technology (formally University of Missouri-Rolla) eliminated the positions of College/School Dean.  
 In FY 2015, the positions of College/School Dean were reestablished.

UM-IR/RS 8/16

Table 2.4: Degrees and Certificates Awarded by Colleges at the University of Missouri–St. Louis

COLLEGE/DEGREE	FY	FY	FY	FY	FY	FY	FY	FY	FY	FY	Average	Change in FY16 relative to the 10-Year Avg.			
	2007	2008	2009	2010	2011	2012	2013	2014	2015	2016			3-Year	5-Year	10-Year
<b>ARTS AND SCIENCES, COLLEGE OF</b>															
U-Grad. Certif.								2	20	33	29	27.3	N/A	N/A	
Bachelors	759	734	749	763	772	763	791	792	913	924	876.3	836.6	796.0	16%	
Grad. Certif.	34	18	30	35	20	30	27	9	23	15	15.7	20.8	24.1	-38%	
Masters	211	214	215	241	241	243	237	210	199	196	201.7	217.0	220.7	-11%	
Doctorate	30	24	34	35	24	33	29	36	32	29	32.3	31.8	30.6	-5%	
All	1,034	990	1,028	1,074	1,057	1,069	1,086	1,067	1,200	1,193	1,153.3	1,095.8	1,079.8	10%	
<b>BUSINESS ADMINISTRATION, COLLEGE OF</b>															
Bachelors	579	598	573	545	579	505	440	507	516	524	515.7	498.4	536.6	-2%	
Grad. Certif.	16	18	12	11	13	19	7	16	20	29	21.7	18.2	16.1	80%	
Masters	163	163	210	162	171	204	189	185	169	174	176.0	184.2	179.0	-3%	
Doctorate	1	1	0	2	1	2	0	0	8	3	3.7	2.6	1.8	67%	
All	759	780	795	720	764	730	636	708	713	730	717.0	703.4	733.5	0%	
<b>EDUCATION, COLLEGE OF</b>															
Bachelors	260	230	271	229	256	223	234	205	198	187	196.7	209.4	229.3	-18%	
Grad. Certif.	8	1	4	5	10	21	21	25	23	36	28.0	25.2	15.4	134%	
Masters	252	255	262	287	340	301	336	370	308	323	333.7	327.6	303.4	6%	
Ed. Specialist	31	28	42	31	22	26	28	13	14	17	14.7	19.6	25.2	-33%	
Doctorate	18	27	27	24	21	33	24	21	34	38	31.0	30.0	26.7	42%	
All	569	541	606	576	649	604	643	634	577	601	604.0	611.8	600.0	0%	
<b>FINE ARTS AND COMMUNICATION, COLLEGE OF</b>															
U-Grad. Certif.							0	0	1	0	0.3	N/A	N/A		
Bachelors	210	210	188	214	223	207	225	218	247	241	235.3	227.6	218.3	10%	
Masters	19	26	14	22	17	28	4	14	12	13	13.0	14.2	16.9	-23%	
All	229	236	202	236	240	235	229	232	260	254	248.7	242.0	235.3	8%	
<b>NURSING, COLLEGE OF</b>															
Bachelors	163	186	181	200	201	206	224	246	284	253	261.0	242.6	214.4	18%	
Grad. Certif.		5	1	1	4	2	2	4	2	1	2.3	2.2	N/A		
Masters	48	51	43	41	72	63	79	52	55	53	53.3	60.4	55.7	-5%	
Doctorate	2	9	2	2	4	6	7	7	9	5	7.0	6.8	5.3	-6%	
All	213	251	227	244	281	277	312	309	350	312	323.7	312.0	277.6	12%	

Table 2.4: Degrees and Certificates Awarded by Colleges at the University of Missouri–St. Louis (continued)

COLLEGE/DEGREE	FY	FY	FY	FY	FY	FY	FY	FY	FY	FY	Average			Change in FY16 relative to the 10-Year Avg.
	2007	2008	2009	2010	2011	2012	2013	2014	2015	2016	3-Year	5-Year	10-Year	
<b>OPTOMETRY, COLLEGE OF</b>														
First Profes.	44	38	44	41	44	47	40	39	41	45	41.7	42.4	42.3	6%
Masters	0	0	1	2	1	0	1	1	0	0	0.3	0.4	0.6	-100%
Doctorate	1	1	0	0	0	0	1	0	1	0	0.3	0.4	0.4	-100%
All	45	39	45	43	45	47	42	40	42	45	42.3	43.2	43.3	4%
<b>SOCIAL WORK, SCHOOL OF</b>														
Bachelors										25	N/A	N/A	N/A	
Masters										33	N/A	N/A	N/A	
All										58	N/A	N/A	N/A	
<b>ENGINEERING PROGRAM</b>														
Bachelors	48	46	52	56	58	58	58	51	88	97	78.7	70.4	61.2	58%
<b>GRADUATE SCHOOL</b>														
Bachelors	20	12	4	4	3	1	2	1	0	1	0.7	1.0	4.8	-79%
Grad. Certif.	21	22	33	30	24	24	31	26	19	35	26.7	27.0	26.5	32%
Masters	25	20	26	16	26	33	25	22	18	18	19.3	23.2	22.9	-21%
All	66	54	63	50	53	58	58	49	37	54	46.7	51.2	54.2	0%

UM-IR/RS 8/16