



The Promise and Pitfalls of Updating State and Federal Compliance Reporting with New Administrative Systems

**“Moving Beyond the Numbers:
The Role of IR in Decision-Making”**

**MidAIR Fall 2008 Conference
Kansas City, Missouri
November, 2008**

**Randy Sade, Ast Research Analyst, Institutional Research & Planning, UM System
Robert Mullen, Associate Director of Institutional Research & Planning, UM-System**



Session Overview

- Status of New Administration Systems
- Overview of Our Compliance Processes
- Focus on Student Data
- New Roles for System IR
- Challenges/Frustrations and Opportunities
- Questions and Answers



University of Missouri

- Large residential campus
- Engineering residential campus
- Two urban campuses
- Characteristics:
 - Over 64,000 Students
 - Over 27,000 Faculty and Staff



Status of New Administrative Systems

PeopleSoft (Oracle)

All Campuses and System are now in production with:

- Student Records
- Student Financial Aid
- Student Finance
- Human Resources
- Finance



Compliance Data

- New Administrative Systems, New Compliance/Census Process
- A Validation of System Conversion/Implementation
- A Validation of New Administrative Processes



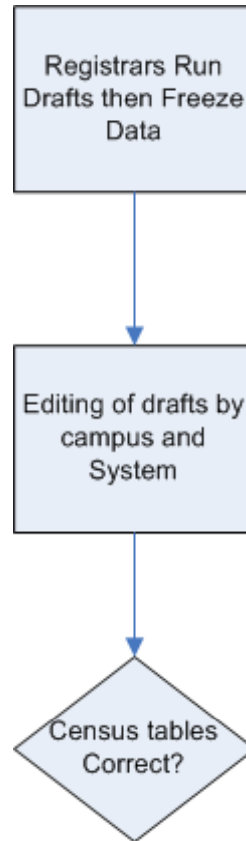
Compliance/Census Data

(continued)

- Frozen Tables for Enrollment, SCH/Sections, End of Term, Completions, Teaching Loads
- Uses
 - Trend
 - Comparative
- MDHE (EMSAS)
- NCES (IPEDS)
- Campus Consistencies



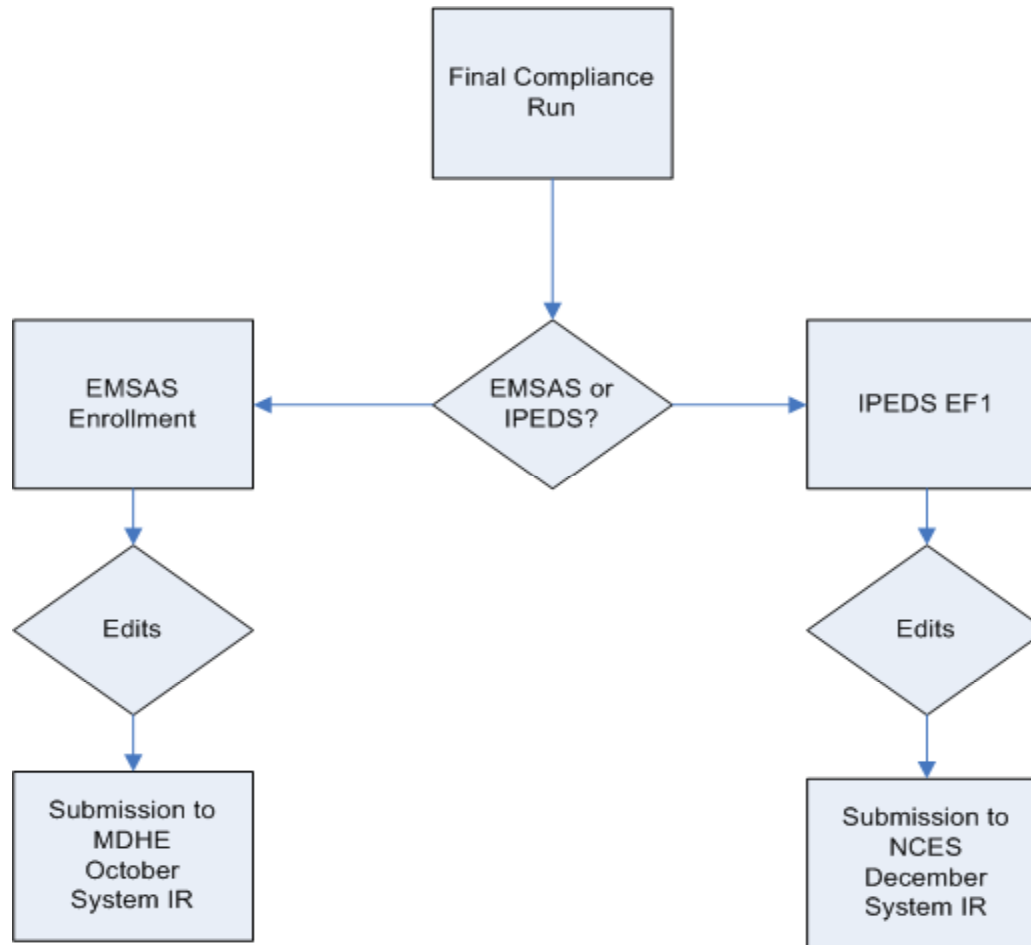
Student Census/Compliance Process





Student Census/Compliance Process

(continued)





Institutional Research's Roles

- Coordinators
- Facilitators
- Moderators
- Interpreters
- Hosts
- Data Editors



Challenges/Frustrations

- Reporting v. Research
- New Data
- Data Editing early in Process
- Re-written Programs and Reports
- Communications
- Reporting v. Production for Reporting
- October for State, December for IPEDS:
What to do with Changes and/or NCES
Data Checks?



Challenges/Frustrations

(continued)

- New Processes/Roles v. Business as Usual
- Data/Report Timeliness
- Errors: Is it:
 - Data Entry
 - Program Errors
 - Definition Errors
 - Process Errors
- Four Campuses, Five Perspectives



Opportunities

- Improve Processes, Data, and Reporting Efforts
- Review of Old Interpretations, Definitions, & Rules
- Finding things that had been missed with legacy reports



Questions & Discussions: What Are Others Doing?

- What is your office's role in Compliance Reporting?
- How does your Office or institution use Compliance Data?
- Does your institution review its compliance processes or definitions?
- Does your institution have the process documented?



Conclusions

- Status of New Administration Systems
- Overview of Our Compliance Processes
- New Roles for System IR
- Challenges/Frustrations and Opportunities



Thank You for Your Time



Contact Information

- **Randy Sade**
 - Assistant Research Analyst, Institutional Research & Planning, UM System
 - (573) 884-9201
 - sader@umsystem.edu
- **Robert Mullen**
 - Associate Director of Institutional Research & Planning, UM System
 - (573) 882-0004
 - mullenrw@umsystem.edu