

**ENROLLMENT SUMMARY REPORT  
FALL 2003**

Dr. La Shonda Carter-Boone  
Associate Institutional Research Analyst

Office of Planning & Budget  
722 Lewis Hall  
University of Missouri System

November 2003

P&B 2003, Report 8

<http://www.system.missouri.edu/planning>

## FALL 2003 ENROLLMENT SUMMARY

### Executive Summary

This report summarizes the status and trends in fall enrollment at the University of Missouri's four campuses. Highlights of the report include:

- The University of Missouri System enrolled a record 62,089 students in Fall 2003, a 1.9% increase over the record 60,903 students that enrolled in Fall 2002. Over the past 5 years, total enrollment at the University has increased by 13.4%.
- From Fall 2002, total undergraduate enrollment increased from 45,132 to 46,321, an increase of nearly 3%.
- Total on-campus first-time degree seeking student headcount increased 5% from Fall 2002 and 9.5% over the last two years.
- The University of Missouri System enrolled a total 41,137 full-time and 20,952 part-time students in Fall 2003.
- Eighty-one percent of all students enrolled at the University of Missouri System are Missouri residents.

## **Technical Notes**

These tables provide counts of students enrolled in the fall of 2003 on-schedule credit courses at the four campuses of the University of Missouri. Fall 2002 counts are included in the Table 3 series (3.0-3.4) for comparison purposes. The data included in these tables were prepared in the admissions and registration offices at the respective campuses. The data are counts as of the census data at each campus, which is defined as the end of the fourth week of classes for the fall session. The source data are generally based on the reporting guidelines and definitions of the Missouri Department of Higher Education (DHE) and the National Center for Educational Statistics (NCES).

Each of the tables in the Table 3 and Table 4 series include counts of on- and off-campus students. The columns titled "On-Campus", according to the CBHE guidelines, include students enrolled geographically on campus and students in the Graduate Engineering (Residence) Centers. All other students are counted in the columns headed "Off-Campus", which include students enrolled in extension courses and students that receive H.S advanced credit from the Kansas City and St. Louis campuses. The tables of the Table 3 series also include full-time equivalence (FTE) counts. FTE is defined as 15 semester credit hours for undergraduates and 12 semester credit hours for graduates. For professional programs, FTE is defined as 15 semester hours for Law, 18 for UM Columbia Medicine, and 16 for Veterinary Medicine. For Dentistry, UMKC Medicine, Optometry, and Pharmacy, FTE is equal to headcount.

## **Caveats**

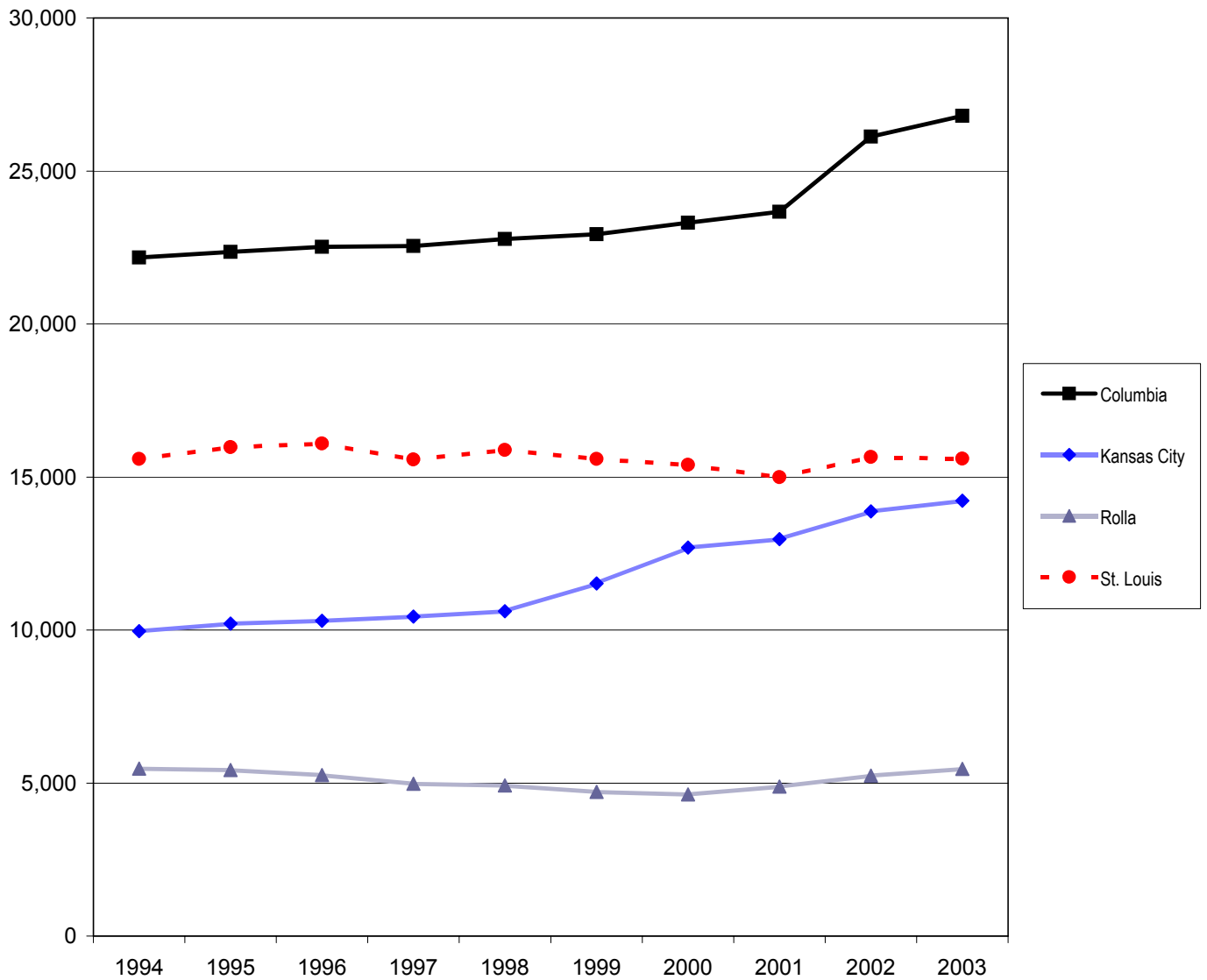
First- and second-year students in the Medicine MD program at UMKC are included in the undergraduate counts of the Table 3 and Table 4 series. For this reason, headcount enrollments for students at all years in the Medicine MD program are summarized in Table 6.

Enrollment counts for students in "Off-Schedule" courses, which include intersession courses, short courses, Video Credit courses, and other courses which begin and end on dates other than those for the regular academic semester, are accumulated during the term in which the courses began and are reported the semester following their end date.

## **Figures 1-2: Fall Enrollment and Full-time Equivalence History by Campus, 1994 to 2003**

- Over the past ten years, total enrollment at the University of Missouri System has increased 16.7%. This overall increase can be largely attributed to steady growth at the Columbia and Kansas City campuses.
- From 1994 to 2003, fall enrollment at UMKC increased by 43% and enrollment at UMC increased by 21%.
- In 2003, fall enrollment at the St. Louis campus remained relatively unchanged from its 1994 enrollment.
- After experiencing several years of declining enrollment from 1996 to 2000, headcount at the Rolla campus continues to climb towards its 1994 enrollment level.
- From 1994 to 2003, full-time equivalence at the University of Missouri System increased nearly 20%.
- The Kansas City and Columbia campuses had a relatively steady growth in FTE over the past ten years with a 24% increase at UMC and 39% increase at UMKC.
- The Rolla and St. Louis campuses experienced slower growth in FTE over the last ten years with increases of 2.3% and 5.9%, respectively.

**Figure 1. Fall Enrollment History by Campus, 1994 to 2003**

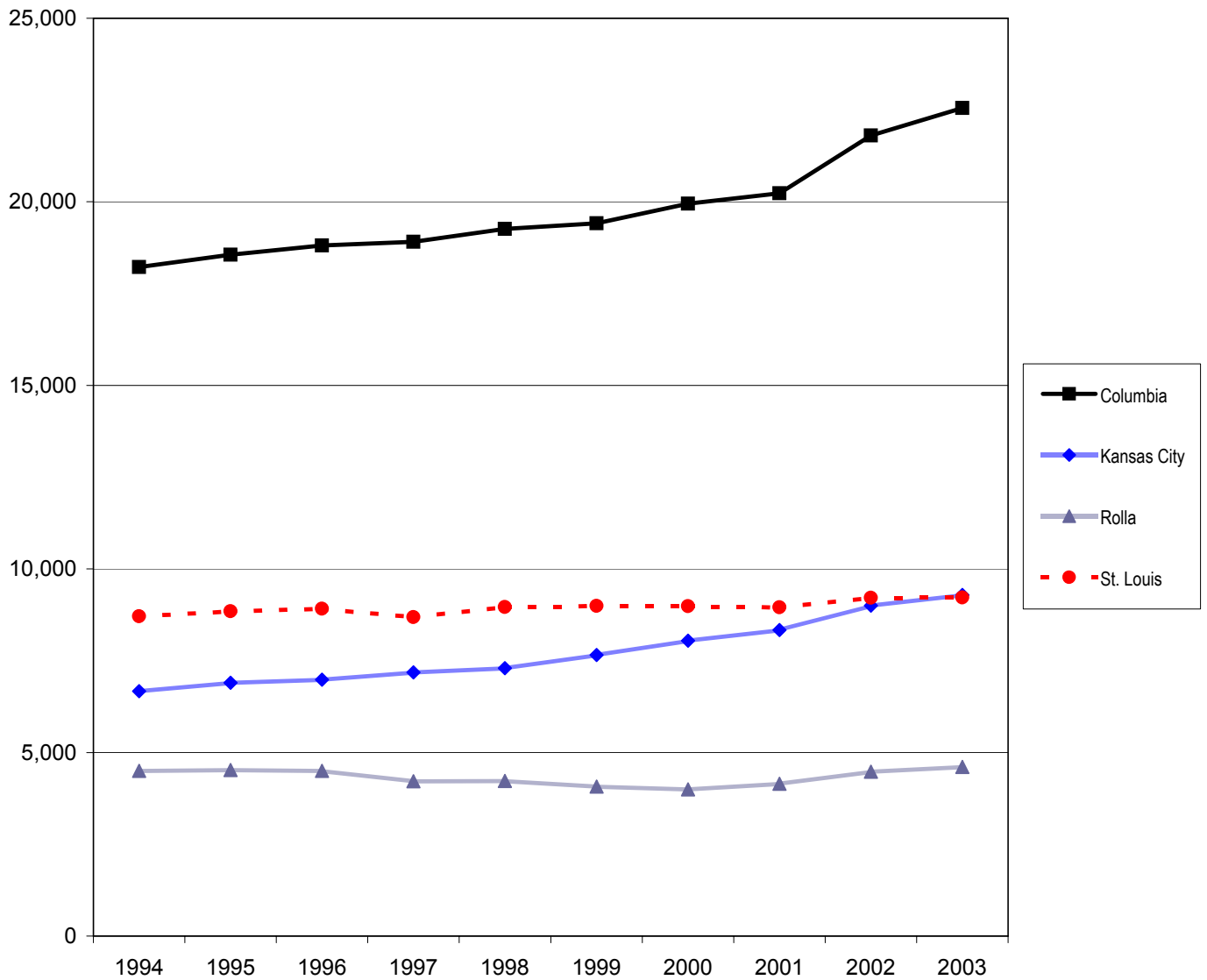


Source: DHE 021  
IR&P/RS 11/03

**Fall Enrollment History by Campus, 1994 to 2003**

Campus	1994	1995	1996	1997	1998	1999	2000	2001	2002	2003
Columbia	22,175	22,356	22,519	22,552	22,780	22,930	23,309	23,667	26,124	26,805
Kansas City	9,962	10,209	10,298	10,444	10,611	11,518	12,698	12,969	13,881	14,226
Rolla	5,472	5,426	5,264	4,976	4,918	4,715	4,626	4,883	5,240	5,459
St. Louis	15,588	15,972	16,094	15,575	15,880	15,594	15,397	14,993	15,658	15,599
Total	53,197	53,963	54,175	53,547	54,189	54,757	56,030	56,512	60,903	62,089

**Figure 2. Full-time Equivalence History by Campus, 1994 to 2003**



Source: DHE 021  
IR&P/RS 11/03

**Full-time Equivalent History by Campus, 1994 to 2003**

Campus	1994	1995	1996	1997	1998	1999	2000	2001	2002	2003
Columbia	18,223	18,557	18,814	18,909	19,259	19,412	19,950	20,231	21,804	22,556
Kansas City	6,670	6,900	6,983	7,184	7,300	7,656	8,049	8,334	9,001	9,290
Rolla	4,502	4,527	4,501	4,219	4,225	4,070	3,997	4,148	4,481	4,604
St. Louis	8,714	8,849	8,918	8,689	8,965	8,994	8,986	8,958	9,214	9,224
Total	38,109	38,833	39,216	39,001	39,749	40,132	40,982	41,671	44,500	45,674

### **Tables 1a-1c: Fall Enrollment History and Summary of Fall 2003 Enrollments**

- The University of Missouri had a record total enrollment of 62,089 in fall of 2003, a 13.4% increase in enrollment over the past five years.
- In the fall of 2003 the Columbia campus enrolled 43.2% (26,805) of total students at the University of Missouri; St. Louis enrolled 25.1% (15,599); Kansas City enrolled 22.9% (14,226); and the Rolla campus enrolled 8.8% (5,459).
- Full-time equivalence at the University of Missouri was 45,674 in fall of 2003, an increase of 2.6% from 2002.
- The University of Missouri enrolled 46,321 undergraduate students (75% of total headcount), 2,708 first professional students (4.4%), and 13,060 graduate students (21.0%).
- Eighty-one percent of all students enrolled at the University are Missouri residents.
- Of the 62,089 students enrolled System-wide, 66% are full-time students.

**Table 1a. Fall Enrollment Headcount by Student Level**

	Campus				Total
	Columbia	Kansas City	Rolla	St Louis	
<b>Undergraduate*</b>	20,441	9,167	4,089	12,624	46,321
<b>Professional</b>	1,109	1,435		159	2,703
<b>Graduate</b>	5,255	3,624	1,370	2,816	13,065
<b>Grand Total*</b>	26,805	14,226	5,459	15,599	62,089

\*The undergraduate total and grand total for UMKC and UMSL include students taking college credit at their high school through dual credit programs. When these students are excluded from the headcount, the grand total for UMKC is 11,912 and the grand total for UMSL is 12,295.

Source: DHE02I

IR&P/LCB 10/03

**Table 1b. Fall Enrollment History by Campus**

Campus	1999	2000	2001	2002	2003	5 yr. Change
Columbia	22,930	23,309	23,667	26,124	26,805	17%
Kansas City	11,518	12,698	12,969	13,881	14,226	24%
Rolla	4,715	4,626	4,883	5,240	5,459	16%
St Louis	15,594	15,397	14,993	15,658	15,599	0%
<b>Total</b>	<b>54,757</b>	<b>56,030</b>	<b>56,512</b>	<b>60,903</b>	<b>62,089</b>	<b>13%</b>

Source: DHE02I

IR&P/LCB 10/03

**Table 1c. Summary of Fall Enrollments**

		Campus				Total
		Columbia	Kansas City	Rolla	St Louis	
<b>Undergraduate</b>	Headcount	20,441	9,167	4,089	12,624	46,321
	Full-time Equivalent	18,406	5,989	3,769	7,776	35,940
	Resident	17,739	7,343	3,275	11,880	40,237
	Nonresident	2,702	1,824	814	744	6,084
	Full-time	19,033	5,049	3,677	5,631	33,390
	Part-time	1,408	4,118	412	6,993	12,931
<b>Professional</b>	Headcount	1,109	1,435		159	2,703
	Full-time Equivalent	1,109	1,415		159	2,683
	Resident	1,057	1,075		90	2,222
	Nonresident	52	360		69	481
	Full-time	1,093	1,382		159	2,634
	Part-time	16	53		0	69
<b>Graduate</b>	Headcount	5,255	3,624	1,370	2,816	13,065
	Full-time Equivalent	3,041	1,886	835	1,289	7,051
	Resident	3,196	2,020	394	2,364	7,974
	Nonresident	2,059	1,604	976	452	5,091
	Full-time	2,529	1,151	841	592	5,113
	Part-time	2,726	2,473	529	2,224	7,952
<b>Grand Totals</b>	Headcount	26,805	14,226	5,459	15,599	62,089
	Full-time Equivalent	22,556	9,290	4,604	9,224	45,674
	Resident	21,992	10,438	3,669	14,334	50,433
	Nonresident	4,813	3,788	1,790	1,265	11,656
	Full-time	22,655	7,582	4,518	6,382	41,137
	Part-time	4,150	6,644	941	9,217	20,952

Source: DHE02I

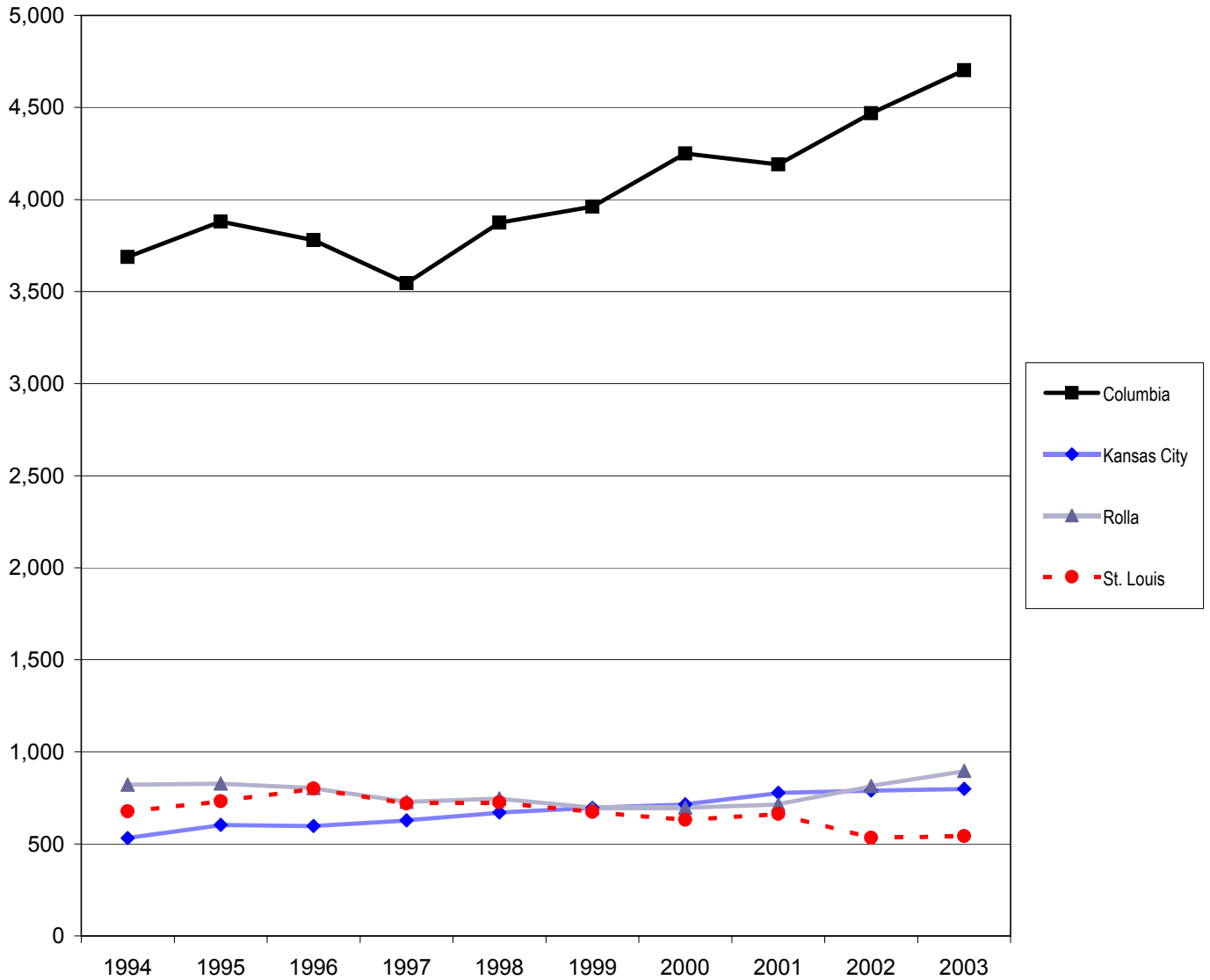
IR&P/LCB 10/03



### **Figures 3-5: First-time On-Campus Headcount, 1994 to 2003**

- From 1994 to 2003, overall first-time on-campus freshmen headcount increased nearly 21% at the University of Missouri.
- UMKC experienced the largest increase in first-time freshmen headcount over the last ten years (51%); first-time freshmen headcount at UMC and UMR increased 27.5% and 9.1%, respectively; first-time freshmen headcount at the St. Louis campus decreased nearly 20%.
- From 1994 to 2003, overall undergraduate transfers to the University of Missouri remained relatively stable, fluctuating between 4,200 and 4,750 transfers each fall. However, most of this stability can be attributed to the Kansas City campus that experienced relatively steady growth in undergraduate transfers while transfers to the other campuses were relatively unstable.
- After several years of steady decline, undergraduate transfers to the Rolla campus have increased steadily since Fall 2001.
- Overall first-time graduate headcount steadily declined from 1994 to 1998 ; significantly increased between 1998 and 2002 (26%) ; and decreased 6% from 2002 to 2003.

**Figure 3. First-time On-Campus Freshmen History by Campus, 1994 to 2003**

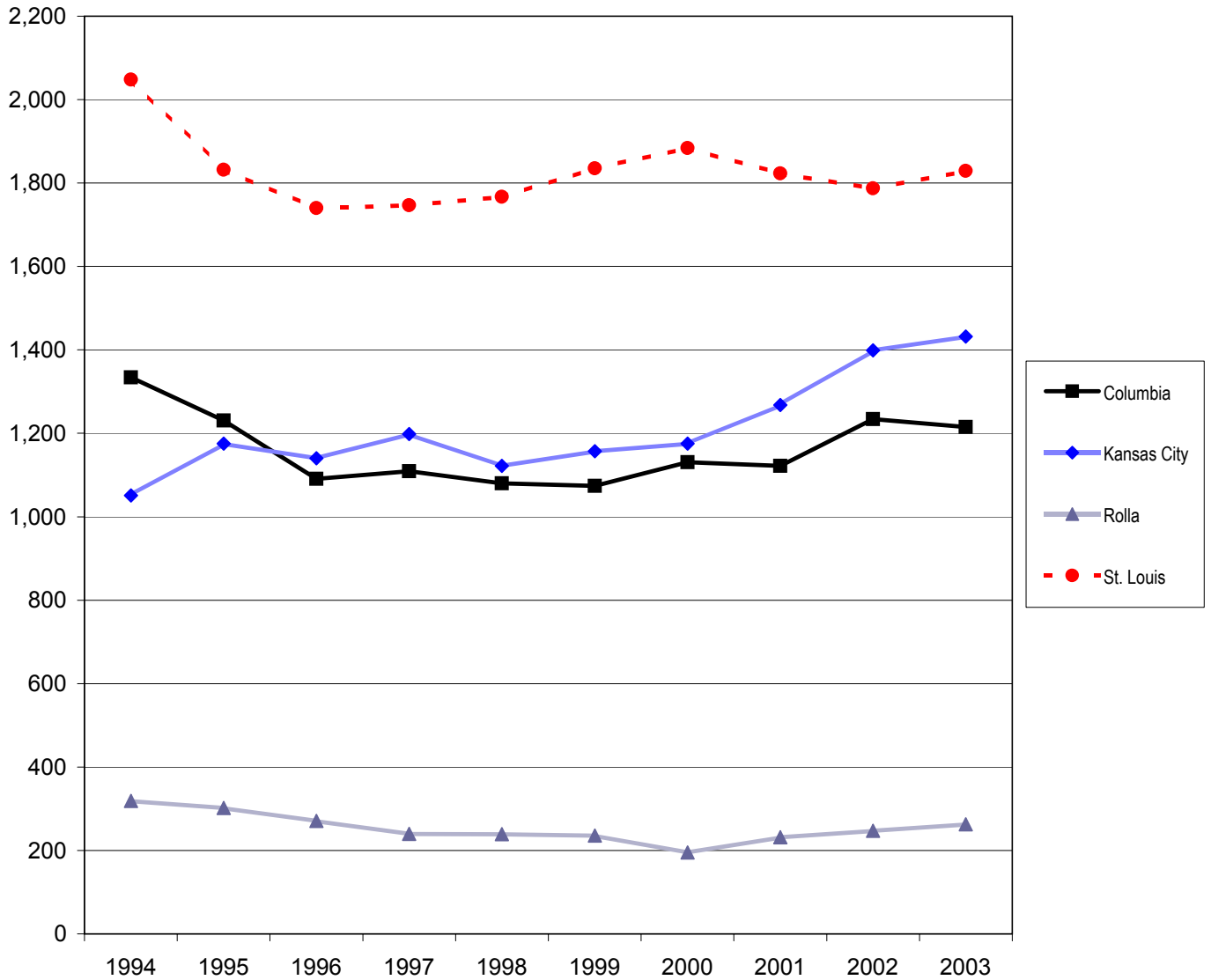


Source: DHE 021  
IR&P/RS 11/03

**First-time On-Campus Freshmen History by Campus, 1994 to 2003**

Campus	1994	1995	1996	1997	1998	1999	2000	2001	2002	2003
Columbia	3,687	3,880	3,780	3,546	3,874	3,961	4,250	4,191	4,468	4,702
Kansas City	531	603	598	628	671	696	715	778	790	799
Rolla	822	828	803	728	747	697	696	715	815	897
St. Louis	676	732	801	719	726	674	631	663	533	542
Total	5,716	6,043	5,982	5,621	6,018	6,028	6,292	6,347	6,606	6,940

**Figure 4. First-time On-Campus Undergraduate Transfer Student History by Campus, 1994 to 2003**

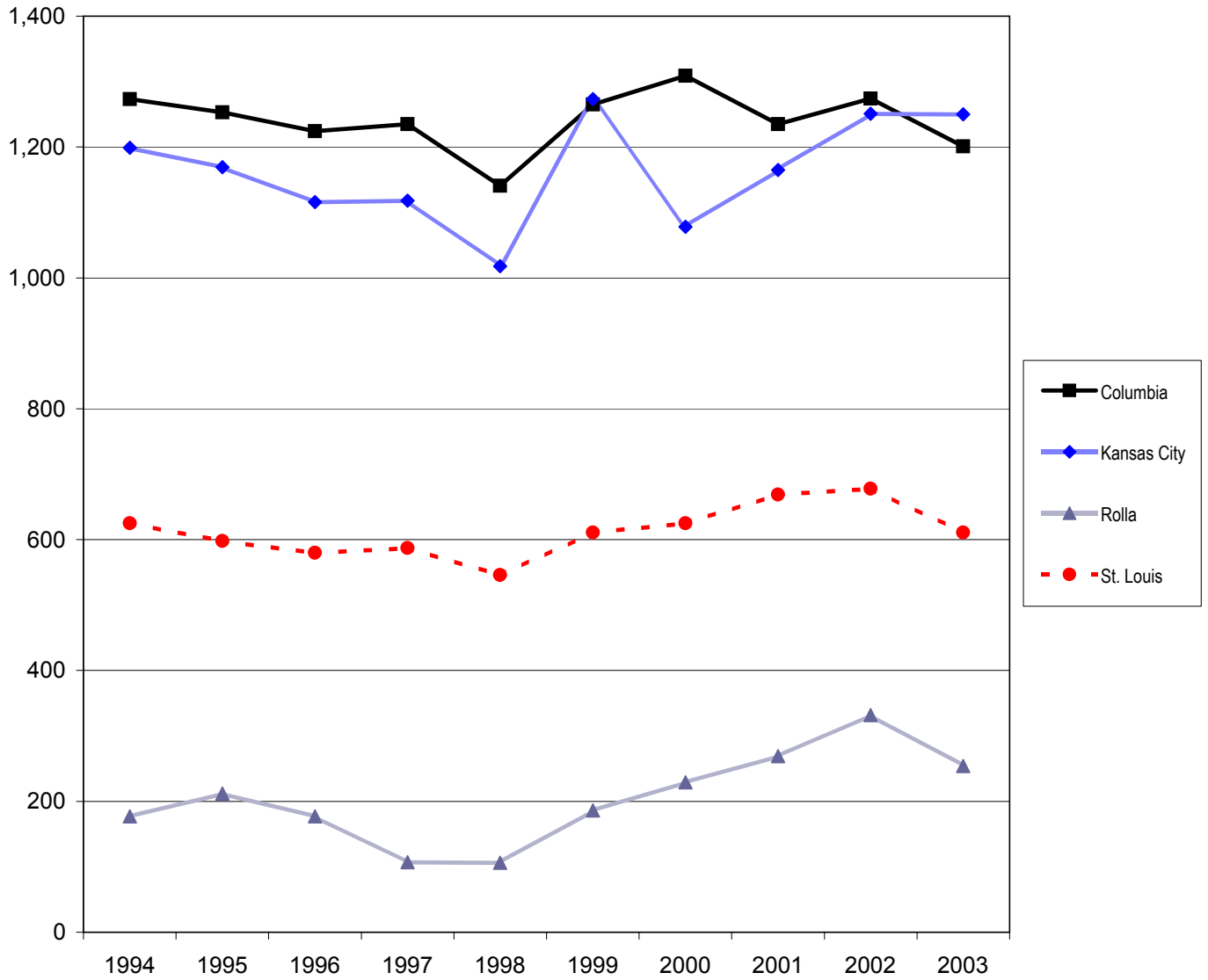


Source: DHE 021  
IR&P/RS 11/03

**First-time On-Campus Undergraduate Transfer Student History by Campus, 1994 to 2003**

Campus	1994	1995	1996	1997	1998	1999	2000	2001	2002	2003
Columbia	1,334	1,231	1,091	1,109	1,080	1,074	1,131	1,122	1,234	1,215
Kansas City	1,051	1,175	1,140	1,198	1,122	1,157	1,175	1,268	1,399	1,432
Rolla	319	302	271	240	239	236	195	232	247	263
St. Louis	2,048	1,832	1,740	1,747	1,767	1,835	1,884	1,823	1,787	1,829
Total	4,752	4,540	4,242	4,294	4,208	4,302	4,385	4,445	4,667	4,739

**Figure 5. First-time On-Campus Graduate Student History by Campus, 1994 to 2003\***



\* Includes First-Professional students  
 Source: DHE 021  
 IR&P/RS 11/03

**First-time On-Campus Graduate Student History by Campus, 1994 to 2003\***

Campus	1994	1995	1996	1997	1998	1999	2000	2001	2002	2003
Columbia	1,273	1,253	1,224	1,235	1,141	1,265	1,309	1,235	1,274	1,201
Kansas City	1,199	1,169	1,116	1,118	1,018	1,273	1,078	1,165	1,251	1,250
Rolla	177	212	177	107	106	186	229	269	332	254
St. Louis	625	598	580	587	546	611	625	669	678	611
Total	3,274	3,232	3,097	3,047	2,811	3,335	3,241	3,338	3,535	3,316

\* Includes First-Professional students

**Table 2: First-time On-Campus Headcount, Fall 1999-Fall 2003**

- Over the past five years, first-time degree-seeking freshmen headcounts increased 19% at UMC, 15% at UMKC, and 28% at UMR, while first-time degree-seeking freshmen headcount at UMSL decreased 18%.
- The number of degree-seeking undergraduate transfers increased at all campuses and the number of non degree-seeking transfer students decreased.
- From 1999 to 2003, first-time first-professional headcounts decreased 10% at UMC and 9% at UMKC ; first-time first-professional headcount at UMSL did not significantly change.
- Since 1999, first-time degree-seeking graduate headcounts increased 4% at UMC, 15% at UMKC, and 30% at UMR, while there was a 1% decrease at UMSL.

**Table 2. First-time On-Campus Headcount, Fall 1999 - Fall 2003**

		1999	2000	2001	2002	2003	5 yr. Change
<b>Columbia</b>							
<b>Freshmen</b>	Degree-Seeking	3,932	4,226	4,167	4,439	4,669	19%
	Non Degree-Seeking	29	30	24	29	33	14%
<b>Undergraduate Transfers</b>	Degree-Seeking	962	1,008	1,016	1,124	1,122	17%
	Non Degree-Seeking	112	123	106	110	93	-17%
<b>Professional</b>	Degree-Seeking	343	365	312	312	307	-10%
<b>Graduate</b>	Degree-Seeking	773	807	804	833	803	4%
	Non Degree-Seeking	149	137	119	129	91	-39%
<b>Kansas City</b>							
<b>Freshmen</b>	Degree-Seeking	688	708	772	780	788	15%
	Non Degree-Seeking	8	7	6	10	11	38%
<b>Undergraduate Transfers</b>	Degree-Seeking	965	974	1,107	1,197	1,265	31%
	Non Degree-Seeking	192	201	161	202	167	-13%
<b>Professional</b>	Degree-Seeking	374	324	359	359	339	-9%
<b>Graduate</b>	Degree-Seeking	703	627	688	768	806	15%
	Non Degree-Seeking	196	127	118	124	105	-46%
<b>Rolla</b>							
<b>Freshmen</b>	Degree-Seeking	688	680	702	795	878	28%
	Non Degree-Seeking	9	16	13	20	19	>100%
<b>Undergraduate Transfers</b>	Degree-Seeking	217	179	217	231	254	17%
	Non Degree-Seeking	19	16	15	16	9	-53%
<b>Graduate</b>	Degree-Seeking	182	226	265	324	237	30%
	Non Degree-Seeking	4	3	4	8	17	>100%
<b>St Louis</b>							
<b>Freshmen</b>	Degree-Seeking	655	619	634	519	534	-18%
	Non Degree-Seeking	19	12	29	14	8	-58%
<b>Undergraduate Transfers</b>	Degree-Seeking	1,597	1,650	1,609	1,613	1,728	8%
	Non Degree-Seeking	238	234	214	174	101	-58%
<b>Professional</b>	Degree-Seeking	42	41	37	37	43	2%
<b>Graduate</b>	Degree-Seeking	548	558	603	615	540	-1%
	Non Degree-Seeking	21	26	29	26	28	33%

Source: DHE02I & IPEDS EF1

IR&P/LCB 10/03

### **Tables 3.0-3.4: Headcount, Full-Time Equivalence, and Student Credit Hours**

#### **UM System**

- Total headcount enrollment at the University increased 2% from 60,903 in Fall 2002 to 62,089 in Fall 2003. This increase is consistent with a steady increase in enrollment since 1998.
- The number of first-time degree seeking freshmen enrolling at the University of Missouri increased by 336 students over Fall 2002, an increase of 5%. This increase is consistent with an overall steady increase in first-time freshmen enrollment since 1998.
- The total FTE enrollments and SCH produced increased by 3% from Fall 2002.

#### **UM-Columbia**

- Total headcount enrollment at UM-Columbia increased 3% (681 students) from 26,124 to 26,805 in Fall 2003.
- First-time degree seeking freshmen enrollment increased 5% from Fall 2002; first-time first-professional enrollment decreased 2%; and first-time graduate degree seeking enrollment increased by 2%.
- When all levels were combined, FTE enrollment and SCH produced increased 3% and 4%, respectively.

#### **UM-Kansas City**

- Total headcount enrollment at UM-Kansas City was 14,226 in Fall 2003, a 2% increase over the total of 13,881 in Fall 2002. FTE enrollment rose by 3% during the last year.
- Total undergraduate enrollment increased by 3%, graduate enrollment increased by 1% and first-professional enrollment did not change from Fall 2002.
- Enrollment of first-time degree seeking freshmen increased by only 8 students or 1% over Fall 2002.

#### **UM-Rolla**

- Total headcount enrollment at UM-Rolla increased from 5,240 students in Fall 2002 to 5,459 students in Fall 2003, an increase of 4% from the previous year.
- The number of first-time degree seeking freshmen increased by 83 students from last year, an increase of 10% from Fall 2002, and an increase of 25% over the last two years.
- Total FTE enrollment and SCH produced increased by 5% at the undergraduate level while there was a 6% decrease at the graduate level.

#### **UM-St. Louis**

- Total headcount enrollment at UM-St. Louis was 15,599 in Fall 2003, relatively unchanged from Fall 2002. FTE enrollment and SCH produced also remained unchanged from Fall 2002.
- Total undergraduate enrollment decreased by 1%. Graduate and first-professional enrollment both increased by 1%.
- The number of first-time degree seeking freshmen on the St. Louis campus increased by 15 students from Fall 2002, an increase of 3%.

**Table 3.0 Headcounts, Full-Time Equivalence, and Student Credit Hours**

	<b>UM System</b>											
	<b>On-Campus</b>				<b>Off-Campus</b>				<b>Total</b>			
	FS02	FS03	<b>Change</b>		FS02	FS03	<b>Change</b>		FS02	FS03	<b>Change</b>	
		#	%			#	%			#	%	
<b>Headcount by Student Level</b>												
Undergraduate												
Freshman & Sophomore DS	16,355	16,911	556	3%	8	10	2 >100%		16,363	16,921	558	3%
Junior & Senior DS	21,885	22,516	631	3%	118	124	6 >100%		22,003	22,640	637	3%
Nondegree	<u>1,087</u>	<u>855</u>	<u>-232</u>	-21%	<u>5,679</u>	<u>5,905</u>	<u>226</u>	4%	<u>6,766</u>	<u>6,760</u>	<u>-6</u>	0%
Total	39,327	40,282	955	2%	5,805	6,039	234	4%	45,132	46,321	1,189	3%
First Professional												
Dentistry (DDS)	347	360	13	4%	0	0	0		347	360	13	4%
Law (JD)	1,031	994	-37	-4%	0	0	0		1,031	994	-37	-4%
Medicine (MD)	740	729	-11	-1%	0	0	0		740	729	-11	-1%
Optometry (OD)	158	159	1	1%	0	0	0		158	159	1	1%
Pharmacy (DPharm)	214	210	-4	-2%	0	0	0		214	210	-4	-2%
Vet. Med. (DVM)	<u>253</u>	<u>256</u>	<u>3</u>	1%	<u>0</u>	<u>0</u>	<u>0</u>		<u>253</u>	<u>256</u>	<u>3</u>	1%
Total	2,743	2,708	-35	-1%	0	0	0		2,743	2,708	-35	-1%
Graduate												
Masters & Ed. Spec.	7,958	7,817	-141	-2%	905	946	41 >100%		8,863	8,763	-100	-1%
Doctoral	2,935	3,148	213	7%	12	99	87 >100%		2,947	3,247	300	10%
Nondegree	<u>632</u>	<u>547</u>	<u>-85</u>	-13%	<u>586</u>	<u>503</u>	<u>-83 &gt;100%</u>		<u>1,218</u>	<u>1,050</u>	<u>-168</u>	-14%
Total	11,525	11,512	-13	0%	1,503	1,548	45 >100%		13,028	13,060	32	0%
<b>Grand Total</b>	<b>53,595</b>	<b>54,502</b>	<b>907</b>	<b>2%</b>	<b>7,308</b>	<b>7,587</b>	<b>279</b>	<b>4%</b>	<b>60,903</b>	<b>62,089</b>	<b>1,186</b>	<b>2%</b>
<b>Headcount by Location or Type</b>												
UM Campus	53,506	54,362	856	2%	0	0	0		53,506	54,362	856	2%
Grad. Engin. Centers	88	82	-6	-7%	0	0	0		88	82	-6	-7%
Extension Courses	1	0	-1	-100%	1,845	1,957	112	6%	1,846	1,957	111	6%
H.S. Advanced Credit	<u>0</u>	<u>58</u>	<u>58</u>	<u>N/A</u>	<u>5,463</u>	<u>5,630</u>	<u>167</u>	<u>3%</u>	<u>5,463</u>	<u>5,688</u>	<u>225</u>	<u>4%</u>
Total	53,595	54,502	907	2%	7,308	7,587	279	4%	60,903	62,089	1,186	2%
<b>First-time Students: Headcount</b>												
Freshmen-Degree Seeking	6,533	6,869	336	5%	0	0	0		6,533	6,869	336	5%
-Nondegree	73	71	-2	-3%	2,308	2,301	-7	0%	2,381	2,372	-9	0%
Transfer UG-Degree Seeking	4,165	4,369	204	5%	19	25	6	32%	4,184	4,394	210	5%
-Nondegree	502	370	-132	-26%	69	168	99	>100%	571	538	-33	-6%
First Professional	708	689	-19	-3%	0	0	0		708	689	-19	-3%
Graduate-Degree Seeking	2,540	2,386	-154	-6%	188	234	46	24%	2,728	2,620	-108	-4%
-Nondegree	<u>287</u>	<u>241</u>	<u>-46</u>	-16%	<u>276</u>	<u>252</u>	<u>-24</u>	-9%	<u>563</u>	<u>493</u>	<u>-70</u>	-12%
Total	14,808	14,995	187	1%	2,860	2,980	120	4%	17,668	17,975	307	2%
<b>FTE Enrollments by Student Level</b>												
Undergraduate	32,965	34,077	1,112	3%	1,843	1,865	21	1%	34,809	35,941	1,133	3%
First Professional	2,670	2,683	13	0%	0	0	0		2,670	2,683	13	0%
Graduate	<u>6,467</u>	<u>6,470</u>	<u>2</u>	0%	<u>558</u>	<u>581</u>	<u>23</u>	4%	<u>7,025</u>	<u>7,051</u>	<u>25</u>	0%
Total	42,103	43,229	1,126	3%	2,401	2,445	44	2%	44,504	45,675	1,171	3%
<b>SCH Produced by Student Level</b>												
Undergraduate	494,480	511,153	16,673	3%	27,648	27,968	320	1%	522,128	539,121	16,993	3%
First Professional	45,791	46,440	649	1%	0	0	0		45,791	46,440	649	1%
Graduate	<u>77,561</u>	<u>77,645</u>	<u>84</u>	0%	<u>6,696</u>	<u>6,966</u>	<u>270</u>	4%	<u>84,257</u>	<u>84,611</u>	<u>354</u>	0%
Total	617,832	635,237	17,406	3%	34,344	34,934	590	2%	652,176	670,171	17,996	3%

Source: DHE021

IR&P/LCB 10/03



**Table 3.1 Headcounts, Full-Time Equivalence, and Student Credit Hours**

	<b>UM-Columbia</b>											
	<b>On-Campus</b>				<b>Off-Campus</b>				<b>Total</b>			
	<b>FS02</b>	<b>FS03</b>	<b>Change</b>		<b>FS02</b>	<b>FS03</b>	<b>Change</b>		<b>FS02</b>	<b>FS03</b>	<b>Change</b>	
		<b>#</b>	<b>%</b>			<b>#</b>	<b>%</b>			<b>#</b>	<b>%</b>	
<b>Headcount by Student Level</b>												
Undergraduate												
Freshman & Sophomore DS	9,829	10,283	454	5%	8	9	1	13%	9,837	10,292	455	5%
Junior & Senior DS	9,311	9,638	327	4%	92	97	5	5%	9,403	9,735	332	4%
Nondegree	268	245	-23	-9%	190	169	-21	-11%	458	414	-44	-10%
Total	19,408	20,166	758	4%	290	275	-15	-5%	19,698	20,441	743	4%
First Professional												
Law (JD)	520	481	-39	-8%	0	0	0		520	481	-39	-8%
Medicine (MD)	373	372	-1	0%	0	0	0		373	372	-1	0%
Vet. Med. (DVM)	253	256	3	1%	0	0	0		253	256	3	1%
Total	1,146	1,109	-37	-3%	0	0	0		1,146	1,109	-37	-3%
Graduate												
Masters & Ed. Spec.	2,350	2,192	-158	-7%	552	576	24	4%	2,902	2,768	-134	-5%
Doctoral	1,661	1,832	171	10%	4	78	74	>100%	1,665	1,910	245	15%
Nondegree	277	228	-49	-18%	436	349	-87	-20%	713	577	-136	-19%
Total	4,288	4,252	-36	-1%	992	1,003	11	1%	5,280	5,255	-25	0%
<b>Grand Total</b>	<b>24,842</b>	<b>25,527</b>	<b>685</b>	<b>3%</b>	<b>1,282</b>	<b>1,278</b>	<b>-4</b>	<b>0%</b>	<b>26,124</b>	<b>26,805</b>	<b>681</b>	<b>3%</b>
<b>Headcount by Location or Type</b>												
UM Campus	24,842	25,505	663	3%	0	0	0		24,842	25,505	663	3%
Grad. Engin. Centers	0	0	0		0	0	0		0	0	0	
Extension Courses	0	0	0		1,282	1,266	-16	-1%	1,282	1,266	-16	-1%
H.S. Advanced Credit	0	22	22		0	12	12		0	34	34	
Total	24,842	25,527	685	3%	1,282	1,278	-4	0%	26,124	26,805	681	3%
<b>First-time Students: Headcount</b>												
Freshmen-Degree Seeking	4,439	4,669	230	5%	0	0	0		4,439	4,669	230	5%
-Nondegree	29	33	4	14%	95	22	-73	-77%	124	55	-69	-56%
Transfer UG-Degree Seeking	1,124	1,122	-2	0%	18	19	1	6%	1,142	1,141	-1	0%
-Nondegree	110	93	-17	-15%	46	93	47	102%	156	186	30	19%
First Professional	312	307	-5	-2%	0	0	0		312	307	-5	-2%
Graduate-Degree Seeking	833	803	-30	-4%	91	136	45	49%	924	939	15	2%
-Nondegree	129	91	-38	-29%	226	199	-27	-12%	355	290	-65	-18%
Total	6,976	7,118	142	2%	476	469	-7	-1%	7,452	7,587	135	2%
<b>FTE Enrollments by Student Level</b>												
Undergraduate	17,554	18,320	767	4%	81	86	5	6%	17,634	18,406	772	4%
First Professional	1,096	1,109	13	1%	0	0	0		1,096	1,109	13	1%
Graduate	2,703	2,664	-38	-1%	371	376	5	1%	3,074	3,041	-34	-1%
Total	21,352	22,094	741	3%	452	462	10	2%	21,804	22,556	751	3%
<b>SCH Produced by Student Level</b>												
Undergraduate	263,306	274,806	11,500	4%	1,208	1,283	75	6%	264,514	276,089	11,575	4%
First Professional	17,798	18,003	205	1%	0	0	0		17,798	18,003	205	1%
Graduate	32,433	31,972	-461	-1%	4,456	4,515	59	1%	36,889	36,487	-402	-1%
Total	313,537	324,781	11,244	4%	5,664	5,798	134	2%	319,201	330,579	11,378	4%

Source: DHE02I

IR&P/LCB 10/03

**Table 3.2 Headcounts, Full-Time Equivalence, and Student Credit Hours**

	UM-Kansas City											
	On-Campus				Off-Campus				Total			
	FS02	FS03	Change #	%	FS02	FS03	Change #	%	FS02	FS03	Change #	%
<b>Headcount by Student Level</b>												
Undergraduate												
Freshman & Sophomore DS	2,473	2,477	4	0%	0	0	0		2,473	2,477	4	0%
Junior & Senior DS	3,766	4,035	269	7%	0	0	0		3,766	4,035	269	7%
Nondegree	378	334	-44	-12%	2,253	2,321	68	3%	2,631	2,655	24	1%
Total	6,617	6,846	229	3%	2,253	2,321	68	3%	8,870	9,167	297	3%
First Professional												
Dentistry (DDS)	347	360	13	4%	0	0	0		347	360	13	4%
Law (JD)	511	513	2	0%	0	0	0		511	513	2	0%
Medicine (MD)	367	357	-10	-3%	0	0	0		367	357	-10	-3%
Pharmacy (DPharm)	214	210	-4	-2%	0	0	0		214	210	-4	-2%
Total	1,439	1,440	1	0%	0	0	0		1,439	1,440	1	0%
Graduate												
Masters & Ed. Spec.	2,739	2,813	74	3%	0	0	0		2,739	2,813	74	3%
Doctoral	523	541	18	3%	0	0	0		523	541	18	3%
Nondegree	249	202	-47	-19%	61	63	2	3%	310	265	-45	-15%
Total	3,511	3,556	45	1%	61	63	2	3%	3,572	3,619	47	1%
<b>Grand Total</b>	<b>11,567</b>	<b>11,842</b>	<b>275</b>	<b>2%</b>	<b>2,314</b>	<b>2,384</b>	<b>70</b>	<b>3%</b>	<b>13,881</b>	<b>14,226</b>	<b>345</b>	<b>2%</b>
<b>Headcount by Location or Type</b>												
UM Campus	11,566	11,830	264	2%	0	0	0		11,566	11,830	264	2%
Extension Courses	1	0	-1	-100%	64	70	6	9%	65	70	5	8%
H.S. Advanced Credit	0	12	12		2,250	2,314	64	3%	2,250	2,326	76	3%
Total	11,567	11,842	275	2%	2,314	2,384	70	3%	13,881	14,226	345	2%
<b>First-time Students: Headcount</b>												
Freshmen-Degree Seeking	780	788	8	1%	0	0	0		780	788	8	1%
-Nondegree	10	11	1	10%	12	40	28	233%	22	51	29	132%
Transfer UG-Degree Seeking	1,197	1,265	68	6%	0	0	0		1,197	1,265	68	6%
-Nondegree	202	167	-35	-17%	1	0	-1		203	167	-36	-18%
First Professional	359	339	-20	-6%	0	0	0		359	339	-20	-6%
Graduate-Degree Seeking	768	806	38	5%	0	0	0		768	806	38	5%
-Nondegree	124	105	-19	-15%	18	19	1	6%	142	124	-18	-13%
Total	3,440	3,481	41	1%	31	59	28	90%	3,471	3,540	69	2%
<b>FTE Enrollments by Student Level</b>												
Undergraduate	5,192	5,434	242	5%	599	556	-43	-7%	5,791	5,989	198	3%
First Professional	1,416	1,415	-1	0%	0	0	0		1,416	1,415	-1	0%
Graduate	1,787	1,875	88	5%	11	11	0	3%	1,798	1,886	88	5%
Total	8,395	8,724	329	4%	610	567	-43	-7%	9,005	9,290	285	3%
<b>SCH Produced by Student Level</b>												
Undergraduate	77,882	81,505	3,623	5%	8,987	8,335	-652	-7%	86,869	89,840	2,971	3%
First Professional	24,868	25,094	226	1%	0	0	0		24,868	25,094	226	1%
Graduate	21,396	22,507	1,111	5%	128	132	4	3%	21,524	22,639	1,115	5%
Total	124,146	129,105	4,960	4%	9,115	8,467	-648	-7%	133,261	137,572	4,312	3%

Source: DHE021

IR&P/LCB 10/03

**Table 3.3 Headcounts, Full-Time Equivalence, and Student Credit Hours**

	<u>UM-Rolla</u>											
	<u>On-Campus</u>				<u>Off-Campus</u>				<u>Total</u>			
	<u>FS02</u>	<u>FS03</u>	<u>Change</u>		<u>FS02</u>	<u>FS03</u>	<u>Change</u>		<u>FS02</u>	<u>FS03</u>	<u>Change</u>	
		<u>#</u>	<u>%</u>			<u>#</u>	<u>%</u>			<u>#</u>	<u>%</u>	
<b>Headcount by Student Level</b>												
Undergraduate												
Freshman & Sophomore DS	1,650	1,827	177	11%	0	0	0	0%	1,650	1,827	177	11%
Junior & Senior DS	2,128	2,121	-7	0%	0	0	0	0%	2,128	2,121	-7	0%
Nondegree	55	52	-3	-5%	16	89	73	>100%	71	141	70	99%
Total	3,833	4,000	167	4%	16	89	73	>100%	3,849	4,089	240	6%
Graduate												
Masters & Ed. Spec.	753	702	-51	-7%	247	244	-3	-1%	1,000	946	-54	-5%
Doctoral	334	339	5	1%	4	7	3	75%	338	346	8	2%
Nondegree	16	24	8	50%	37	54	17	46%	53	78	25	47%
Total	1,103	1,065	-38	-3%	288	305	17	6%	1,391	1,370	-21	-2%
<b>Grand Total</b>	<b>4,936</b>	<b>5,065</b>	<b>129</b>	<b>3%</b>	<b>304</b>	<b>394</b>	<b>90</b>	<b>30%</b>	<b>5,240</b>	<b>5,459</b>	<b>219</b>	<b>4%</b>
<b>Headcount by Location or Type</b>												
UM Campus	4,848	4,966	118	2%	0	0	0		4,848	4,966	118	2%
Grad. Engin. Centers	88	82	-6	-7%	0	0	0		88	82	-6	-7%
UM Video Network	0	0	0		0	0	0		0	0	0	
Extension Courses	0	0	0		304	394	90	30%	304	394	90	30%
H.S. Advanced Credit	0	17	17		0	0	0		0	17	17	
Total	4,936	5,065	129	3%	304	394	90	30%	5,240	5,459	219	4%
<b>First-time Students: Headcount</b>												
Freshmen-Degree Seeking	795	878	83	10%	0	0	0		795	878	83	10%
-Nondegree	20	19	-1	-5%	0	27	27		20	46	26	>100%
Transfer UG-Degree Seeking	231	254	23	10%	0	0	0		231	254	23	10%
-Nondegree	16	9	-7	-44%	16	58	42	>100%	32	67	35	>100%
Graduate-Degree Seeking	324	237	-87	-27%	76	69	-7	-9%	400	306	-94	-24%
-Nondegree	8	17	9	>100%	15	25	10	67%	23	42	19	83%
Total	1,394	1,414	20	1%	107	179	72	67%	1,501	1,593	92	6%
<b>FTE Enrollments by Student Level</b>												
Undergraduate	3,591	3,750	160	4%	3	19	16	>100%	3,594	3,769	175	5%
Graduate	756	694	-62	-8%	131	141	10	8%	887	835	-52	-6%
Total	4,347	4,444	97	2%	134	160	26	20%	4,481	4,604	123	3%
<b>SCH Produced by Student Level</b>												
Undergraduate	53,861	56,255	2,394	4%	51	290	239	>100%	53,912	56,545	2,633	5%
Graduate	9,076	8,329	-747	-8%	1,566	1,691	125	8%	10,642	10,020	-622	-6%
Total	62,937	64,584	1,647	3%	1,617	1,981	364	23%	64,554	66,565	2,011	3%

Source: DHE021

IR&P/LCB 10/03

**Table 3.4 Headcounts, Full-Time Equivalence, and Student Credit Hours**

	<b>UM-St. Louis</b>											
	<b>On-Campus</b>				<b>Off-Campus</b>				<b>Total</b>			
	<b>FS02</b>	<b>FS03</b>	<b>Change</b>		<b>FS02</b>	<b>FS03</b>	<b>Change</b>		<b>FS02</b>	<b>FS03</b>	<b>Change</b>	
		<b>#</b>	<b>%</b>			<b>#</b>	<b>%</b>			<b>#</b>	<b>%</b>	
<b>Headcount by Student Level</b>												
Undergraduate												
Freshman & Sophomore DS	2,403	2,324	-79	-3%	0	1	1		2,403	2,325	-78	-3%
Junior & Senior DS	6,680	6,722	42	1%	26	27	1	4%	6,706	6,749	43	1%
Nondegree	386	224	-162	-42%	3,220	3,326	106	3%	3,606	3,550	-56	-2%
Total	9,469	9,270	-199	-2%	3,246	3,354	108	3%	12,715	12,624	-91	-1%
First Professional												
Optometry (OD)	158	159	1	1%	0	0	0		158	159	1	1%
Total	158	159	1	1%	0	0	0		158	159	1	1%
Graduate												
Masters & Ed. Spec.	2,116	2,110	-6	0%	106	126	20	19%	2,222	2,236	14	1%
Doctoral	417	436	19	5%	4	14	10	>100%	421	450	29	7%
Nondegree	90	93	3	3%	52	37	-15	-29%	142	130	-12	-8%
Total	2,623	2,639	16	1%	162	177	15	9%	2,785	2,816	31	1%
<b>Grand Total</b>	<b>12,250</b>	<b>12,068</b>	<b>-182</b>	<b>-1%</b>	<b>3,408</b>	<b>3,531</b>	<b>123</b>	<b>4%</b>	<b>15,658</b>	<b>15,599</b>	<b>-59</b>	<b>0%</b>
<b>Headcount by Location or Type</b>												
UM Campus	12,250	12,061	-189	-2%	0	0	0		12,250	12,061	-189	-2%
Extension Courses	0	0	0		195	227	32	16%	195	227	32	16%
H.S. Advanced Credit	0	7	7		3,213	3,304	91	3%	3,213	3,311	98	3%
Total	12,250	12,068	-182	-1%	3,408	3,531	123	4%	15,658	15,599	-59	0%
<b>First-time Students: Headcount</b>												
Freshmen-Degree Seeking	519	534	15	3%	0	0	0		519	534	15	3%
-Nondegree	14	8	-6	-43%	2,201	2,212	11	0%	2,215	2,220	5	0%
Transfer UG-Degree Seeking	1,613	1,728	115	7%	1	6	5	>100%	1,614	1,734	120	7%
-Nondegree	174	101	-73	-42%	6	17	11	>100%	180	118	-62	-34%
First Professional	37	43	6	16%	0	0	0		37	43	6	16%
Graduate-Degree Seeking	615	540	-75	-12%	21	29	8	38%	636	569	-67	-11%
-Nondegree	26	28	2	8%	17	9	-8	-47%	43	37	-6	-14%
Total	2,998	2,982	-16	-1%	2,246	2,273	27	1%	5,244	5,255	11	0%
<b>FTE Enrollments by Student Level</b>												
Undergraduate	6,629	6,572	-56	-1%	1,160	1,204	44	4%	7,789	7,776	-12	0%
First Professional	158	159	1	0%	0	0	0		158	159	1	0%
Graduate	1,221	1,236	15	1%	46	53	7	16%	1,267	1,289	22	2%
Total	8,008	7,967	-41	-1%	1,206	1,257	51	4%	9,214	9,224	10	0%
<b>SCH Produced by Student Level</b>												
Undergraduate	99,431	98,587	-844	-1%	17,402	18,060	658	4%	116,833	116,647	-186	0%
First Professional	3,125	3,343	218	7%	0	0	0		3,125	3,343	218	7%
Graduate	14,656	14,837	181	1%	546	628	82	15%	15,202	15,465	263	2%
Total	117,212	116,767	-445	0%	17,948	18,688	740	4%	135,160	135,455	295	0%

Source: DHE02I

IR&P/LCB 10/03

## **Tables 4.0-4.4: Full-time, Part-time, Resident, and Nonresident Students**

### **UM System**

- In Fall 2003, sixty-six percent of all students at the University of Missouri were enrolled full-time and eighty-one percent of all students enrolled were Missouri residents.
- Seventy-two percent of all undergraduates were enrolled full-time and sixty-one percent of all graduate students were enrolled part-time. Ninety-three percent of law students were enrolled full-time and one hundred percent of all students in dentistry, medicine, optometry, pharmacy, and veterinary medicine were enrolled full-time.
- Graduate students were the most likely group to be part-time and non-resident. Sixty-one percent of all graduate students were part-time and 39% of all graduate students were non-residents.

### **UM-Columbia**

- Eighty-five percent of all students at UM-Columbia were enrolled full-time and eighty-two percent of all students enrolled were Missouri residents.
- At the undergraduate level, 93% of students were full-time, compared to 48% at the graduate level and 99% at the first-professional level.
- Full-time Missouri residents totaled 18,868 and were 70% of all students enrolled.

### **UM-Kansas City**

- Fifty-three percent of all students at UM-Kansas City were enrolled full-time and seventy-three percent of all students enrolled were Missouri residents.
- At the undergraduate level, 55% of students were enrolled full-time, compared to 32% at the graduate level and 96% at the first-professional level.
- Full-time Missouri residents totaled 5,376 and were 38% of all students enrolled. Part-time Missouri residents totaled 5,062 and were 36% of all students enrolled.

### **UM-Rolla**

- Eighty-three percent of all students at UM-Rolla were enrolled full-time and sixty-seven percent of all students enrolled were Missouri residents.
- Ninety percent of all undergraduates and sixty-one percent of all graduate students were enrolled full-time.
- UM-Rolla had the highest percentage of non-residents among the four campuses (33%).

### **UM-St. Louis**

- UM-St. Louis had the lowest percentage of full-time students (41%) and the highest proportion of Missouri residents (92%) among the four campuses.
- At the undergraduate level, 78% of degree seeking freshmen and sophomores were enrolled full-time, compared to 55% of degree seeking juniors and seniors. Only 21% of graduate students were enrolled full-time.
- Full-time Missouri residents totaled 5,568 and were 36% of all students enrolled. Part-time Missouri residents totaled 8,766 and comprised 56% of all students enrolled.

**Table 4.0 Full-Time, Part-Time, Resident, and Nonresident Students**

Student Level	Residency	UM System									% Full-Time	% Resident
		On-Campus			Off-Campus			Total				
		Full-Time	Part-Time	Total	Full-Time	Part-Time	Total	Full-Time	Part-Time	Total		
<b>Undergraduate</b>												
Freshman & Soph DS	Resident	13,105	996	14,101	0	9	9	13,105	1,005	14,110	93%	83%
	Nonresident	<u>2,630</u>	<u>180</u>	<u>2,810</u>	<u>0</u>	<u>1</u>	<u>1</u>	<u>2,630</u>	<u>181</u>	<u>2,811</u>		
	Total	15,735	1,176	16,911	0	10	10	15,735	1,186	16,921		
Junior & Senior DS	Resident	15,094	4,481	19,575	7	108	115	15,101	4,589	19,690	77%	87%
	Nonresident	<u>2,408</u>	<u>533</u>	<u>2,941</u>	<u>0</u>	<u>9</u>	<u>9</u>	<u>2,408</u>	<u>542</u>	<u>2,950</u>		
	Total	17,502	5,014	22,516	7	117	124	17,509	5,131	22,640		
Nondegree	Resident	45	614	659	55	5,723	5,778	100	6,337	6,437	2%	95%
	Nonresident	<u>46</u>	<u>150</u>	<u>196</u>	<u>0</u>	<u>127</u>	<u>127</u>	<u>46</u>	<u>277</u>	<u>323</u>		
	Total	91	764	855	55	5,850	5,905	146	6,614	6,760		
Total Undergrad.	Resident	28,244	6,091	34,335	62	5,840	5,902	28,306	11,931	40,237	72%	87%
	Nonresident	<u>5,084</u>	<u>863</u>	<u>5,947</u>	<u>0</u>	<u>137</u>	<u>137</u>	<u>5,084</u>	<u>1,000</u>	<u>6,084</u>		
	Total	33,328	6,954	40,282	62	5,977	6,039	33,390	12,931	46,321		
<b>First Professional</b>												
Dentistry (DDS)	Resident	222	0	222	0	0	0	222	0	222	100%	62%
	Nonresident	<u>138</u>	<u>0</u>	<u>138</u>	<u>0</u>	<u>0</u>	<u>0</u>	<u>138</u>	<u>0</u>	<u>138</u>		
	Total	360	0	360	0	0	0	360	0	360		
Law (JD)	Resident	800	54	854	0	0	0	800	54	854	93%	86%
	Nonresident	<u>123</u>	<u>17</u>	<u>140</u>	<u>0</u>	<u>0</u>	<u>0</u>	<u>123</u>	<u>17</u>	<u>140</u>		
	Total	923	71	994	0	0	0	923	71	994		
Medicine (MD)	Resident	624	0	624	0	0	0	624	0	624	100%	86%
	Nonresident	<u>105</u>	<u>0</u>	<u>105</u>	<u>0</u>	<u>0</u>	<u>0</u>	<u>105</u>	<u>0</u>	<u>105</u>		
	Total	729	0	729	0	0	0	729	0	729		
Optometry (OD)	Resident	90	0	90	0	0	0	90	0	90	100%	57%
	Nonresident	<u>69</u>	<u>0</u>	<u>69</u>	<u>0</u>	<u>0</u>	<u>0</u>	<u>69</u>	<u>0</u>	<u>69</u>		
	Total	159	0	159	0	0	0	159	0	159		
Pharmacy (DPharm)	Resident	194	0	194	0	0	0	194	0	194	100%	92%
	Nonresident	<u>16</u>	<u>0</u>	<u>16</u>	<u>0</u>	<u>0</u>	<u>0</u>	<u>16</u>	<u>0</u>	<u>16</u>		
	Total	210	0	210	0	0	0	210	0	210		
Vet. Med. (DVM)	Resident	240	0	240	0	0	0	240	0	240	100%	94%
	Nonresident	<u>16</u>	<u>0</u>	<u>16</u>	<u>0</u>	<u>0</u>	<u>0</u>	<u>16</u>	<u>0</u>	<u>16</u>		
	Total	256	0	256	0	0	0	256	0	256		
Total First Prof.	Resident	2,170	54	2,224	0	0	0	2,170	54	2,224	97%	82%
	Nonresident	<u>467</u>	<u>17</u>	<u>484</u>	<u>0</u>	<u>0</u>	<u>0</u>	<u>467</u>	<u>17</u>	<u>484</u>		
	Total	2,637	71	2,708	0	0	0	2,637	71	2,708		
<b>Graduate</b>												
Masters & Ed. Spec.	Resident	1,957	3,210	5,167	62	515	577	2,019	3,725	5,744	41%	66%
	Nonresident	<u>1,521</u>	<u>1,129</u>	<u>2,650</u>	<u>90</u>	<u>279</u>	<u>369</u>	<u>1,611</u>	<u>1,408</u>	<u>3,019</u>		
	Total	3,478	4,339	7,817	152	794	946	3,630	5,133	8,763		
Doctoral	Resident	388	1,033	1,421	1	86	87	389	1,119	1,508	43%	46%
	Nonresident	<u>1,009</u>	<u>718</u>	<u>1,727</u>	<u>1</u>	<u>11</u>	<u>12</u>	<u>1,010</u>	<u>729</u>	<u>1,739</u>		
	Total	1,397	1,751	3,148	2	97	99	1,399	1,848	3,247		
Nondegree	Resident	48	374	422	8	290	298	56	664	720	8%	69%
	Nonresident	<u>18</u>	<u>107</u>	<u>125</u>	<u>7</u>	<u>198</u>	<u>205</u>	<u>25</u>	<u>305</u>	<u>330</u>		
	Total	66	481	547	15	488	503	81	969	1,050		
Total Graduate	Resident	2,393	4,617	7,010	71	891	962	2,464	5,508	7,972	39%	61%
	Nonresident	<u>2,548</u>	<u>1,954</u>	<u>4,502</u>	<u>98</u>	<u>488</u>	<u>586</u>	<u>2,646</u>	<u>2,442</u>	<u>5,088</u>		
	Total	4,941	6,571	11,512	169	1,379	1,548	5,110	7,950	13,060		
<b>Grand Total</b>	<b>Resident</b>	<b>32,807</b>	<b>10,762</b>	<b>43,569</b>	<b>133</b>	<b>6,731</b>	<b>6,864</b>	<b>32,940</b>	<b>17,493</b>	<b>50,433</b>	66%	81%
	<b>Nonresident</b>	<b><u>8,099</u></b>	<b><u>2,834</u></b>	<b><u>10,933</u></b>	<b><u>98</u></b>	<b><u>625</u></b>	<b><u>723</u></b>	<b><u>8,197</u></b>	<b><u>3,459</u></b>	<b><u>11,656</u></b>		
	<b>Total</b>	<b>40,906</b>	<b>13,596</b>	<b>54,502</b>	<b>231</b>	<b>7,356</b>	<b>7,587</b>	<b>41,137</b>	<b>20,952</b>	<b>62,089</b>		

Source: DHE021

IR&P/LCB 10/03

**Table 4.1 Full-Time, Part-Time, Resident, and Nonresident Students**

Student Level	Residency	UM-Columbia									% Full-Time	% Resident
		On-Campus			Off-Campus			Total				
		Full-Time	Part-Time	Total	Full-Time	Part-Time	Total	Full-Time	Part-Time	Total		
<b>Undergraduate</b>												
Freshman & Soph DS	Resident	8,452	271	8,723	0	8	8	8,452	279	8,731	97%	85%
	Nonresident	<u>1,519</u>	<u>41</u>	<u>1,560</u>	<u>0</u>	<u>1</u>	<u>1</u>	<u>1,519</u>	<u>42</u>	<u>1,561</u>		
	Total	9,971	312	10,283	0	9	9	9,971	321	10,292		
Junior & Senior DS	Resident	8,053	579	8,632	7	81	88	8,060	660	8,720	93%	90%
	Nonresident	<u>962</u>	<u>44</u>	<u>1,006</u>	<u>0</u>	<u>9</u>	<u>9</u>	<u>962</u>	<u>53</u>	<u>1,015</u>		
	Total	9,015	623	9,638	7	90	97	9,022	713	9,735		
Nondegree	Resident	4	182	186	1	101	102	5	283	288	10%	70%
	Nonresident	<u>35</u>	<u>24</u>	<u>59</u>	<u>0</u>	<u>67</u>	<u>67</u>	<u>35</u>	<u>91</u>	<u>126</u>		
	Total	39	206	245	1	168	169	40	374	414		
Total Undergrad.	Resident	16,509	1,032	17,541	8	190	198	16,517	1,222	17,739	93%	87%
	Nonresident	<u>2,516</u>	<u>109</u>	<u>2,625</u>	<u>0</u>	<u>77</u>	<u>77</u>	<u>2,516</u>	<u>186</u>	<u>2,702</u>		
	Total	19,025	1,141	20,166	8	267	275	19,033	1,408	20,441		
<b>First Professional</b>												
Law (JD)	Resident	438	16	454	0	0	0	438	16	454	97%	94%
	Nonresident	<u>27</u>	<u>0</u>	<u>27</u>	<u>0</u>	<u>0</u>	<u>0</u>	<u>27</u>	<u>0</u>	<u>27</u>		
	Total	465	16	481	0	0	0	465	16	481		
Medicine (MD)	Resident	363	0	363	0	0	0	363	0	363	100%	98%
	Nonresident	<u>9</u>	<u>0</u>	<u>9</u>	<u>0</u>	<u>0</u>	<u>0</u>	<u>9</u>	<u>0</u>	<u>9</u>		
	Total	372	0	372	0	0	0	372	0	372		
Vet. Med. (DVM)	Resident	240	0	240	0	0	0	240	0	240	100%	94%
	Nonresident	<u>16</u>	<u>0</u>	<u>16</u>	<u>0</u>	<u>0</u>	<u>0</u>	<u>16</u>	<u>0</u>	<u>16</u>		
	Total	256	0	256	0	0	0	256	0	256		
Total First Prof.	Resident	1,041	16	1,057	0	0	0	1,041	16	1,057	99%	95%
	Nonresident	<u>52</u>	<u>0</u>	<u>52</u>	<u>0</u>	<u>0</u>	<u>0</u>	<u>52</u>	<u>0</u>	<u>52</u>		
	Total	1,093	16	1,109	0	0	0	1,093	16	1,109		
<b>Graduate</b>												
Masters & Ed. Spec.	Resident	964	475	1,439	54	349	403	1,018	824	1,842	58%	67%
	Nonresident	<u>578</u>	<u>175</u>	<u>753</u>	<u>19</u>	<u>154</u>	<u>173</u>	<u>597</u>	<u>329</u>	<u>926</u>		
	Total	1,542	650	2,192	73	503	576	1,615	1,153	2,768		
Doctoral	Resident	244	616	860	1	71	72	245	687	932	45%	49%
	Nonresident	<u>605</u>	<u>367</u>	<u>972</u>	<u>0</u>	<u>6</u>	<u>6</u>	<u>605</u>	<u>373</u>	<u>978</u>		
	Total	849	983	1,832	1	77	78	850	1,060	1,910		
Nondegree	Resident	39	166	205	8	209	217	47	375	422	11%	73%
	Nonresident	<u>13</u>	<u>10</u>	<u>23</u>	<u>4</u>	<u>128</u>	<u>132</u>	<u>17</u>	<u>138</u>	<u>155</u>		
	Total	52	176	228	12	337	349	64	513	577		
Total Graduate	Resident	1,247	1,257	2,504	63	629	692	1,310	1,886	3,196	48%	61%
	Nonresident	<u>1,196</u>	<u>552</u>	<u>1,748</u>	<u>23</u>	<u>288</u>	<u>311</u>	<u>1,219</u>	<u>840</u>	<u>2,059</u>		
	Total	2,443	1,809	4,252	86	917	1,003	2,529	2,726	5,255		
<b>Grand Total</b>	<b>Resident</b>	<b>18,797</b>	<b>2,305</b>	<b>21,102</b>	<b>71</b>	<b>819</b>	<b>890</b>	<b>18,868</b>	<b>3,124</b>	<b>21,992</b>	<b>85%</b>	<b>82%</b>
	<b>Nonresident</b>	<b><u>3,764</u></b>	<b><u>661</u></b>	<b><u>4,425</u></b>	<b><u>23</u></b>	<b><u>365</u></b>	<b><u>388</u></b>	<b><u>3,787</u></b>	<b><u>1,026</u></b>	<b><u>4,813</u></b>		
	<b>Total</b>	<b>22,561</b>	<b>2,966</b>	<b>25,527</b>	<b>94</b>	<b>1,184</b>	<b>1,278</b>	<b>22,655</b>	<b>4,150</b>	<b>26,805</b>		

Source: DHE021

IR&P/LCB 10/03

**Table 4.2 Full-Time, Part-Time, Resident, and Nonresident Students**

Student Level	Residency	UM-Kansas City									% Full-Time	% Resident
		On-Campus			Off-Campus			Total				
		Full-Time	Part-Time	Total	Full-Time	Part-Time	Total	Full-Time	Part-Time	Total		
<b>Undergraduate</b>												
Freshman & Soph DS	Resident	1,678	196	1,874	0	0	0	1,678	196	1,874	88%	76%
	Nonresident	504	99	603	0	0	0	504	99	603		
	Total	2,182	295	2,477	0	0	0	2,182	295	2,477		
Junior & Senior DS	Resident	2,064	870	2,934	0	0	0	2,064	870	2,934	71%	73%
	Nonresident	790	311	1,101	0	0	0	790	311	1,101		
	Total	2,854	1,181	4,035	0	0	0	2,854	1,181	4,035		
Nondegree	Resident	9	211	220	0	2,315	2,315	9	2,526	2,535	0%	95%
	Nonresident	4	110	114	0	6	6	4	116	120		
	Total	13	321	334	0	2,321	2,321	13	2,642	2,655		
Total Undergrad.	Resident	3,751	1,277	5,028	0	2,315	2,315	3,751	3,592	7,343	55%	80%
	Nonresident	1,298	520	1,818	0	6	6	1,298	526	1,824		
	Total	5,049	1,797	6,846	0	2,321	2,321	5,049	4,118	9,167		
<b>First Professional</b>												
Dentistry (DDS)	Resident	222	0	222	0	0	0	222	0	222	100%	62%
	Nonresident	138	0	138	0	0	0	138	0	138		
	Total	360	0	360	0	0	0	360	0	360		
Law (JD)	Resident	362	38	400	0	0	0	362	38	400	89%	78%
	Nonresident	96	17	113	0	0	0	96	17	113		
	Total	458	55	513	0	0	0	458	55	513		
Medicine (MD)	Resident	261	0	261	0	0	0	261	0	261	100%	73%
	Nonresident	96	0	96	0	0	0	96	0	96		
	Total	357	0	357	0	0	0	357	0	357		
Pharmacy (DPharm)	Resident	194	0	194	0	0	0	194	0	194	100%	92%
	Nonresident	16	0	16	0	0	0	16	0	16		
	Total	210	0	210	0	0	0	210	0	210		
Total First Prof.	Resident	1,039	38	1,077	0	0	0	1,039	38	1,077	96%	75%
	Nonresident	346	17	363	0	0	0	346	17	363		
	Total	1,385	55	1,440	0	0	0	1,385	55	1,440		
<b>Graduate</b>												
Masters & Ed. Spec.	Resident	528	1,125	1,653	0	0	0	528	1,125	1,653	35%	59%
	Nonresident	460	700	1,160	0	0	0	460	700	1,160		
	Total	988	1,825	2,813	0	0	0	988	1,825	2,813		
Doctoral	Resident	50	167	217	0	0	0	50	167	217	28%	40%
	Nonresident	100	224	324	0	0	0	100	224	324		
	Total	150	391	541	0	0	0	150	391	541		
Nondegree	Resident	8	110	118	0	30	30	8	140	148	4%	56%
	Nonresident	2	82	84	0	33	33	2	115	117		
	Total	10	192	202	0	63	63	10	255	265		
Total Graduate	Resident	586	1,402	1,988	0	30	30	586	1,432	2,018	32%	56%
	Nonresident	562	1,006	1,568	0	33	33	562	1,039	1,601		
	Total	1,148	2,408	3,556	0	63	63	1,148	2,471	3,619		
<b>Grand Total</b>	<b>Resident</b>	<b>5,376</b>	<b>2,717</b>	<b>8,093</b>	<b>0</b>	<b>2,345</b>	<b>2,345</b>	<b>5,376</b>	<b>5,062</b>	<b>10,438</b>	<b>53%</b>	<b>73%</b>
	<b>Nonresident</b>	<b>2,206</b>	<b>1,543</b>	<b>3,749</b>	<b>0</b>	<b>39</b>	<b>39</b>	<b>2,206</b>	<b>1,582</b>	<b>3,788</b>		
	<b>Total</b>	<b>7,582</b>	<b>4,260</b>	<b>11,842</b>	<b>0</b>	<b>2,384</b>	<b>2,384</b>	<b>7,582</b>	<b>6,644</b>	<b>14,226</b>		

Source: DHE021

IR&P/LCB 10/03



**Table 4.3 Full-Time, Part-Time, Resident, and Nonresident Students**

Student Level	Residency	UM-Rolla									% Full-Time	% Resident
		On-Campus			Off-Campus			Total				
		Full-Time	Part-Time	Total	Full-Time	Part-Time	Total	Full-Time	Part-Time	Total		
<b>Undergraduate</b>												
Freshman & Soph DS	Resident	1,372	46	1,418	0	0	0	1,372	46	1,418	97%	78%
	Nonresident	397	12	409	0	0	0	397	12	409		
	Total	1,769	58	1,827	0	0	0	1,769	58	1,827		
Junior & Senior DS	Resident	1,561	197	1,758	0	0	0	1,561	197	1,758	89%	83%
	Nonresident	337	26	363	0	0	0	337	26	363		
	Total	1,898	223	2,121	0	0	0	1,898	223	2,121		
Nondegree	Resident	4	39	43	0	56	56	4	95	99	7%	70%
	Nonresident	6	3	9	0	33	33	6	36	42		
	Total	10	42	52	0	89	89	10	131	141		
Total Undergrad.	Resident	2,937	282	3,219	0	56	56	2,937	338	3,275	90%	80%
	Nonresident	740	41	781	0	33	33	740	74	814		
	Total	3,677	323	4,000	0	89	89	3,677	412	4,089		
<b>Graduate</b>												
Masters	Resident	141	110	251	6	45	51	147	155	302	59%	32%
	Nonresident	336	115	451	71	122	193	407	237	644		
	Total	477	225	702	77	167	244	554	392	946		
Doctoral	Resident	44	22	66	0	2	2	44	24	68	81%	20%
	Nonresident	236	37	273	1	4	5	237	41	278		
	Total	280	59	339	1	6	7	281	65	346		
Nondegree	Resident	0	9	9	0	15	15	0	24	24	8%	31%
	Nonresident	3	12	15	3	36	39	6	48	54		
	Total	3	21	24	3	51	54	6	72	78		
Total Graduate	Resident	185	141	326	6	62	68	191	203	394	61%	29%
	Nonresident	575	164	739	75	162	237	650	326	976		
	Total	760	305	1,065	81	224	305	841	529	1,370		
<b>Grand Total</b>	<b>Resident</b>	<b>3,122</b>	<b>423</b>	<b>3,545</b>	<b>6</b>	<b>118</b>	<b>124</b>	<b>3,128</b>	<b>541</b>	<b>3,669</b>	<b>83%</b>	<b>67%</b>
	<b>Nonresident</b>	<b>1,315</b>	<b>205</b>	<b>1,520</b>	<b>75</b>	<b>195</b>	<b>270</b>	<b>1,390</b>	<b>400</b>	<b>1,790</b>		
	<b>Total</b>	<b>4,437</b>	<b>628</b>	<b>5,065</b>	<b>81</b>	<b>313</b>	<b>394</b>	<b>4,518</b>	<b>941</b>	<b>5,459</b>		

Source: DHE021

IR&P/LCB 10/03

**Table 4.4 Full-Time, Part-Time, Resident, and Nonresident Students**

		<b>UM-St. Louis</b>										
<b>Student Level</b>	<b>Residency</b>	<b>On-Campus</b>			<b>Off-Campus</b>			<b>Total</b>			<b>% Full-Time</b>	<b>% Resident</b>
		<b>Full-Time</b>	<b>Part-Time</b>	<b>Total</b>	<b>Full-Time</b>	<b>Part-Time</b>	<b>Total</b>	<b>Full-Time</b>	<b>Part-Time</b>	<b>Total</b>		
<b>Undergraduate</b>												
Freshman & Soph DS	Resident	1,603	483	2,086	0	1	1	1,603	484	2,087	78%	90%
	Nonresident	<u>210</u>	<u>28</u>	<u>238</u>	<u>0</u>	<u>0</u>	<u>0</u>	<u>210</u>	<u>28</u>	<u>238</u>		
	Total	1,813	511	2,324	0	1	1	1,813	512	2,325		
Junior & Senior DS	Resident	3,416	2,835	6,251	0	27	27	3,416	2,862	6,278	55%	93%
	Nonresident	<u>319</u>	<u>152</u>	<u>471</u>	<u>0</u>	<u>0</u>	<u>0</u>	<u>319</u>	<u>152</u>	<u>471</u>		
	Total	3,735	2,987	6,722	0	27	27	3,735	3,014	6,749		
Nondegree	Resident	28	182	210	54	3,251	3,305	82	3,433	3,515	2%	99%
	Nonresident	<u>1</u>	<u>13</u>	<u>14</u>	<u>0</u>	<u>21</u>	<u>21</u>	<u>1</u>	<u>34</u>	<u>35</u>		
	Total	29	195	224	54	3,272	3,326	83	3,467	3,550		
Total Undergrad.	Resident	5,047	3,500	8,547	54	3,279	3,333	5,101	6,779	11,880	45%	94%
	Nonresident	<u>530</u>	<u>193</u>	<u>723</u>	<u>0</u>	<u>21</u>	<u>21</u>	<u>530</u>	<u>214</u>	<u>744</u>		
	Total	5,577	3,693	9,270	54	3,300	3,354	5,631	6,993	12,624		
<b>First Professional</b>												
Optometry (OD)	Resident	90	0	90	0	0	0	90	0	90	100%	57%
	Nonresident	<u>69</u>	<u>0</u>	<u>69</u>	<u>0</u>	<u>0</u>	<u>0</u>	<u>69</u>	<u>0</u>	<u>69</u>		
	Total	159	0	159	0	0	0	159	0	159		
Total First Prof.	Resident	90	0	90	0	0	0	90	0	90	100%	57%
	Nonresident	<u>69</u>	<u>0</u>	<u>69</u>	<u>0</u>	<u>0</u>	<u>0</u>	<u>69</u>	<u>0</u>	<u>69</u>		
	Total	159	0	159	0	0	0	159	0	159		
<b>Graduate</b>												
Masters	Resident	324	1,500	1,824	2	121	123	326	1,621	1,947	21%	87%
	Nonresident	<u>147</u>	<u>139</u>	<u>286</u>	<u>0</u>	<u>3</u>	<u>3</u>	<u>147</u>	<u>142</u>	<u>289</u>		
	Total	471	1,639	2,110	2	124	126	473	1,763	2,236		
Doctoral	Resident	50	228	278	0	13	13	50	241	291	26%	65%
	Nonresident	<u>68</u>	<u>90</u>	<u>158</u>	<u>0</u>	<u>1</u>	<u>1</u>	<u>68</u>	<u>91</u>	<u>159</u>		
	Total	118	318	436	0	14	14	118	332	450		
Nondegree	Resident	1	89	90	0	36	36	1	125	126	1%	97%
	Nonresident	<u>0</u>	<u>3</u>	<u>3</u>	<u>0</u>	<u>1</u>	<u>1</u>	<u>0</u>	<u>4</u>	<u>4</u>		
	Total	1	92	93	0	37	37	1	129	130		
Total Graduate	Resident	375	1,817	2,192	2	170	172	377	1,987	2,364	21%	84%
	Nonresident	<u>215</u>	<u>232</u>	<u>447</u>	<u>0</u>	<u>5</u>	<u>5</u>	<u>215</u>	<u>237</u>	<u>452</u>		
	Total	590	2,049	2,639	2	175	177	592	2,224	2,816		
<b>Grand Total</b>	<b>Resident</b>	<b>5,512</b>	<b>5,317</b>	<b>10,829</b>	<b>56</b>	<b>3,449</b>	<b>3,505</b>	<b>5,568</b>	<b>8,766</b>	<b>14,334</b>	<b>41%</b>	<b>92%</b>
	<b>Nonresident</b>	<b><u>814</u></b>	<b><u>425</u></b>	<b><u>1,239</u></b>	<b><u>0</u></b>	<b><u>26</u></b>	<b><u>26</u></b>	<b><u>814</u></b>	<b><u>451</u></b>	<b><u>1,265</u></b>		
	<b>Total</b>	<b>6,326</b>	<b>5,742</b>	<b>12,068</b>	<b>56</b>	<b>3,475</b>	<b>3,531</b>	<b>6,382</b>	<b>9,217</b>	<b>15,599</b>		

Source: DHE021

IR&P/LCB 10/03

### **Table 5: Headcount of Students by Gender and Ethnicity**

- Total enrollment at the University of Missouri was 54% women and 46% men in Fall 2003. UM-St. Louis had the largest percentage of women (62%) and UM-Rolla had the highest proportion of men (77%).
- With the exception of the Rolla campus, women comprised the majority of students at all levels of enrollment at the University of Missouri.
- Of all the students of known ethnicity, under-represented minorities (American Indian/Alaskan Native, African-American, and Hispanic) represented 11% of the University of Missouri's total enrollment. Under-represented minorities comprised 15% of the total enrollment at UM-Kansas City and 13% at UM-St. Louis. Eight percent of students enrolled at UM-Columbia were from under-represented groups as were 7% of the students enrolled at UM-Rolla.
- UM-St. Louis had an African-American enrollment of 1,729 students, 12% of its total, and the largest percentage among the four campuses.
- UM-Kansas City enrolled higher percentages of Asian/Pacific Islanders and Hispanics than the other four campuses at 5% and 3% respectively.
- Although nonresident aliens comprised only 6% of total enrollment at the University of Missouri, they represented 21% of the total graduate enrollment. UM-Rolla enrolls the largest percentage of nonresident alien graduate students (49%).

**Table 5.0 Headcount Students by Gender and Ethnicity**

Data - Classification	UMC		UMKC		UMR		UMSL		TOTAL	
	HC	%	HC	%	HC	%	HC	%	HC	%
<b>A. Gender</b>										
Men										
First-time DS Freshmen	2203	47%	317	40%	695	79%	218	41%	3,433	50%
Other Undergraduate	7,685	49%	3,337	40%	2,434	76%	4,745	39%	18,201	46%
First Professional	540	49%	691	48%	-	-	67	42%	1,298	48%
Graduate	2,328	44%	1,394	39%	1,082	79%	929	33%	5,733	44%
Total	12,756	48%	5,739	40%	4,211	77%	5,959	38%	28,665	46%
Women										
First-time DS Freshmen	2,466	53%	471	60%	183	21%	316	59%	3,436	50%
Other Undergraduate	8,087	51%	5,042	60%	777	24%	7,345	61%	21,251	54%
First Professional	569	51%	749	52%	-	-	92	58%	1,410	52%
Graduate	2,927	56%	2,225	61%	288	21%	1,887	67%	7,327	56%
Total	14,049	52%	8,487	60%	1,248	23%	9,640	62%	33,424	54%
<b>Grand Total</b>	<b>26,805</b>		<b>14,226</b>		<b>5,459</b>		<b>15,599</b>		<b>62,089</b>	
<b>B. Ethnicity *</b>										
Am Indian/Alaskan Native										
First-time DS Freshmen	23	1%	2	0%	5	1%	2	0%	32	0%
Other Undergraduate	100	1%	81	1%	18	1%	41	0%	240	1%
First Professional	7	1%	15	1%	-	-	2	1%	24	1%
Graduate	25	0%	22	1%	4	0%	4	0%	55	0%
Total	155	1%	120	1%	27	1%	49	0%	351	1%
Asian/Pacific Islander										
First-time DS Freshmen	121	3%	73	10%	18	2%	17	3%	229	3%
Other Undergraduate	422	3%	324	4%	99	3%	337	3%	1,182	3%
First Professional	48	5%	206	15%	-	-	5	3%	259	10%
Graduate	80	2%	89	3%	34	3%	71	3%	274	2%
Total	671	3%	692	5%	151	3%	430	3%	1,944	3%
Black Non-Hispanic										
First-time DS Freshmen	291	6%	121	17%	23	3%	78	15%	513	8%
Other Undergraduate	851	6%	905	12%	167	5%	1,338	12%	3,261	9%
First Professional	40	4%	58	4%	-	-	9	6%	107	4%
Graduate	184	4%	350	10%	40	3%	304	11%	878	7%
Total	1,366	5%	1,434	11%	230	4%	1,729	12%	4,759	8%
Hispanic										
First-time DS Freshmen	76	2%	38	5%	19	2%	5	1%	138	2%
Other Undergraduate	240	2%	312	4%	62	2%	153	1%	767	2%
First Professional	9	1%	29	2%	-	-	1	1%	39	2%
Graduate	86	2%	83	2%	19	1%	40	1%	228	2%
Total	411	2%	462	3%	100	2%	199	1%	1,172	2%
White Non-Hispanic										
First-time DS Freshmen	3,989	88%	449	63%	757	91%	395	78%	5,590	85%
Other Undergraduate	13,246	87%	5,888	76%	2,617	85%	9,348	82%	31,099	83%
First Professional	931	90%	1,026	76%	-	-	128	87%	2,085	82%
Graduate	3,579	71%	2,171	65%	575	44%	2,024	76%	8,349	67%
Total	21,745	84%	9,534	72%	3,949	76%	11,895	81%	47,123	80%
Nonresident Alien										
First-time DS Freshmen	33	1%	29	4%	8	1%	12	2%	82	1%
Other Undergraduate	284	2%	278	4%	99	3%	198	2%	859	2%
First Professional	5	0%	22	2%	-	-	2	1%	29	1%
Graduate	1,077	21%	642	19%	642	49%	228	9%	2,589	21%
Total	1,399	5%	971	7%	749	14%	440	3%	3,559	6%
<b>Grand Total</b>	<b>25,747</b>		<b>13,213</b>		<b>5,206</b>		<b>14,742</b>		<b>58,908</b>	

\* Note: Students not reporting ethnicity (Unknown) were removed from the distribution.

Unknown										
First-time DS Freshmen	136		76		48		25		285	
Other Undergraduate	629		591		149		675		2,044	
First Professional	69		84		-		12		165	
Graduate	224		262		56		145		687	
Total	1,058		1,013		253		857		3,181	

Source: EF1

IR&P/LCB 10/03

**Table 6. UMKC Headcount Enrollment in 6-year Medicine (MD) Program**

<u>Program</u>	<u>Years 1 - 2</u>				<u>Years 3 - 6</u>				<u>Total</u>			
	<u>F02</u>	<u>F03</u>	<u>Change</u>		<u>F02</u>	<u>F03</u>	<u>Change</u>		<u>F02</u>	<u>F03</u>	<u>Change</u>	
			<u>#</u>	<u>%</u>			<u>#</u>	<u>%</u>			<u>#</u>	<u>%</u>
Medicine, MD	244	265	21	9%	367	357	-10	-3%	611	622	11	2%

Note: Students in the first 2 years of the 6-year Medicine program are counted as undergraduate students elsewhere in this report. They have been identified here to more completely represent the 6-year program.

Source: DHE 021

IR&P/LCB 10/03