

**ENROLLMENT SUMMARY REPORT
FALL 2005**

Dr. La Shonda Carter-Boone
Senior Institutional Research Analyst

Office of Institutional Research & Planning
722 Lewis Hall
University of Missouri System

January 2006

IR&P 2006, Report 1

<http://www.umsystem.edu/ums/departments/fa/planning/>

FALL 2005 ENROLLMENT SUMMARY

Executive Summary

This report summarizes the status and trends in fall enrollment at the University of Missouri's four campuses. The report includes information about enrollment, full-time equivalence, new students on campus, undergraduate transfer students, full/part-time status, and gender and ethnicity information.

Please note that enrollment totals in this report follow federal and state guidelines, which recommend that students who are classified as "exclusive auditors" are not included in enrollment figures. Consequently, students who are classified as "exclusive auditors" are not included in the campus totals. (Exclusive auditors are defined as students who are enrolled exclusively in courses that are not taken for credit.)

Highlights of the report include:

- The University of Missouri System enrolled a record 63,384 students in Fall 2005, over 1,000 more than the record 62,161 students that enrolled in Fall 2004. Total enrollment at the University has increased by 12% over the past 5 years. (Table 1a)
- In Fall 2005, the University of Missouri enrolled 47,739 undergraduate students (75% of total headcount), 2,770 first professional students (4%), and 12,875 graduate students (20%). (Table 1b)
- From Fall 2004 to Fall 2005, total undergraduate enrollment increased 2% from 46,967 to 47,739. Full-time equivalence at the University of Missouri System increased 3% from Fall 2004. (Table 2.0)
- The University of Missouri System enrolled a total 43,266 full-time and 20,118 part-time students in Fall 2005. Seventy-four percent of all undergraduates were enrolled full-time and 60% of all graduate students were enrolled part-time. (Table 4.0)
- Eighty-one percent of all students enrolled in Fall 2005 at the University of Missouri System were Missouri residents. (Table 4.0)
- Over half of all doctoral students enrolled at the University of Missouri System are not from Missouri. (Table 4.0)
- Women comprised 54% of total enrollment in Fall 2005. UM-St. Louis had the largest percentage of women (61%) and UM-Rolla had the highest proportion of men (78%). (Table 5)
- Of all the students of known ethnicity, under-represented minorities (American Indian/Alaskan Native, African-American, and Hispanic) represented 12% of the University of Missouri System's total enrollment. (Table 5)

Technical Notes

These tables provide counts of students enrolled in the fall of 2005 on-schedule credit courses at the four campuses of the University of Missouri. Fall 2004 counts are included in the Table 3 series (3.0-3.4) for comparison purposes. The data used in this report were generated from the EMSAS Fall Enrollment files, which are submitted to the Missouri Department of Higher Education (MDHE) each fall. Data included in EMSAS files were prepared in the admissions and registration offices at the respective campuses. The data are counts as of the census date at each campus, which is defined as the end of the fourth week of classes for the fall session. The source data are based on the reporting guidelines and definitions of the Missouri Department of Higher Education (MDHE) and the National Center for Educational Statistics (NCES).

Each of the tables in the Table 3 and Table 4 series include counts of on- and off-campus students. The columns titled "On-Campus", according to the MDHE guidelines, include students enrolled geographically on campus and students in the Graduate Engineering (Residence) Centers. All other students are counted in the columns headed "Off-Campus", which include students enrolled in extension courses and students that receive H.S advanced credit from the Kansas City and St. Louis campuses. The tables of the Table 3 series also include full-time equivalence (FTE) counts.

Definitions of FTE:

Undergraduate FTE = Total Student Credit Hours/15

Graduate FTE = Total Student Credit Hours/12

Dentistry FTE = Headcount

Law FTE = Total Student Credit Hours/15

UMC Medicine FTE = Headcount

UMKC Medicine FTE = Headcount

Optometry FTE = Headcount

Pharmacy FTE = Headcount

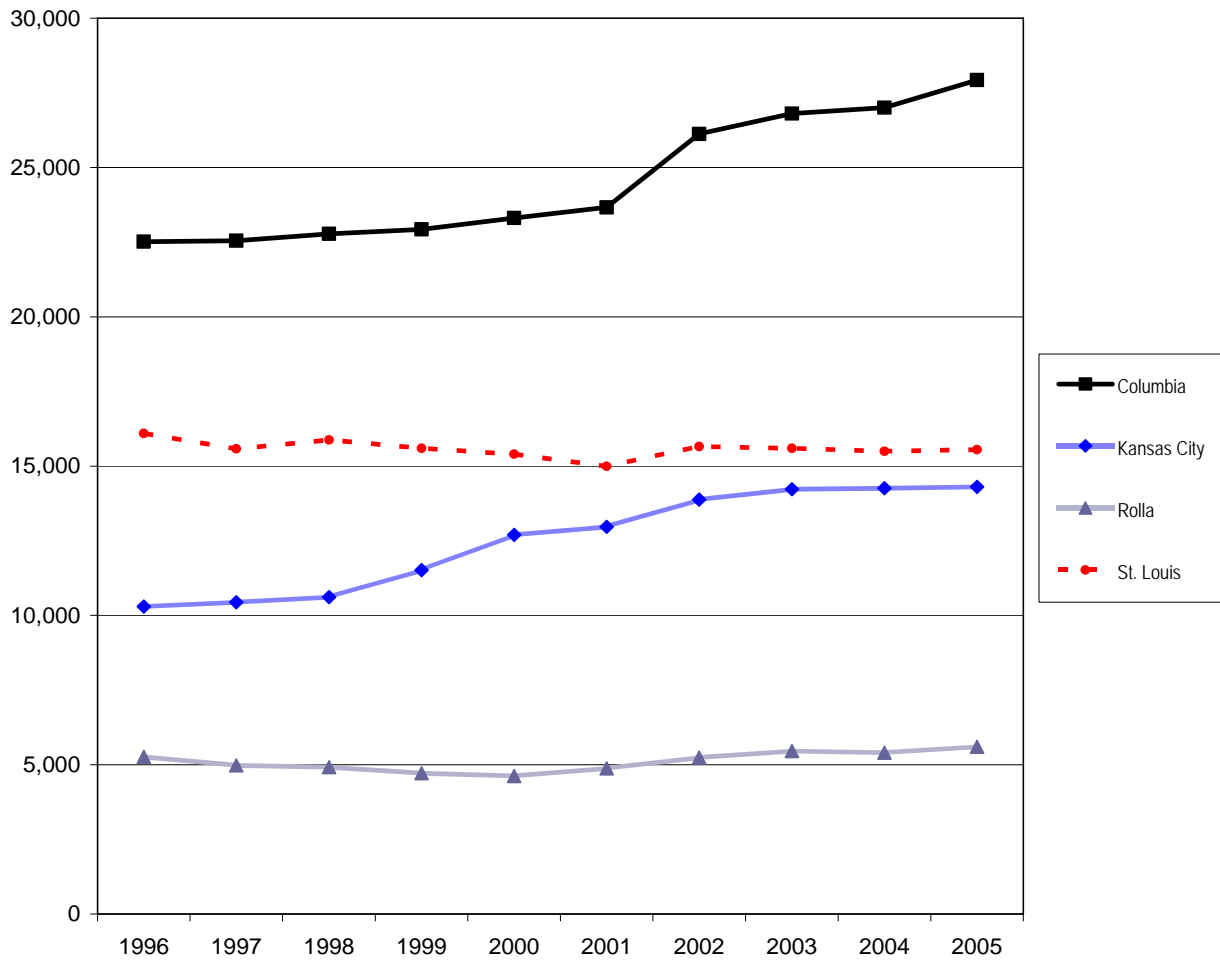
Vet Medicine FTE = Headcount

Caveats

First- and second-year students in the Medicine MD program at UMKC are included in the undergraduate counts of the Table 3 and Table 4 series.

Enrollment counts for students in "Off-Schedule" courses, which include intersession courses, short courses, Video Credit courses, and other courses which begin and end on dates other than those for the regular academic semester, are accumulated during the term in which the courses began and are reported the semester following their end date.

Figure 1. Fall Enrollment History by Campus, 1996 to 2005



Source: EMSAS Fall Enrollment file
IR&P/RS 1/06

Fall Enrollment History by Campus, 1996 to 2005

Campus	1996	1997	1998	1999	2000	2001	2002	2003	2004	2005
Columbia	22,519	22,552	22,780	22,930	23,309	23,667	26,124	26,805	27,003	27,930
Kansas City	10,298	10,444	10,611	11,518	12,698	12,969	13,881	14,226	14,256	14,306
Rolla	5,264	4,976	4,918	4,715	4,626	4,883	5,240	5,459	5,404	5,600
St. Louis	16,094	15,575	15,880	15,594	15,397	14,993	15,658	15,599	15,498	15,548
Total	54,175	53,547	54,189	54,757	56,030	56,512	60,903	62,089	62,161	63,384

Table 1a. Fall Enrollment History by Campus

Campus	2001	2002	2003	2004	2005	5 yr. Change
Columbia	23,667	26,124	26,805	27,003	27,930	18%
Kansas City	12,969	13,881	14,226	14,256	14,306	10%
Rolla	4,883	5,240	5,459	5,404	5,600	15%
St Louis	14,993	15,658	15,599	15,498	15,548	4%
Total	56,512	60,903	62,089	62,161	63,384	12%

Source: EMSAS Fall Enrollment file

IR&P/LCB 01/06

Table 1b. Fall Enrollment Headcount by Student Level

	Campus				Total
	Columbia	Kansas City	Rolla	St Louis	
Undergraduate*	21,335	9,487	4,311	12,606	47,739
Professional	1,083	1,523		164	2,770
Graduate	5,512	3,296	1,289	2,778	12,875
Grand Total*	27,930	14,306	5,600	15,548	63,384

*The undergraduate total and grand total for UMKC and UMSL include students taking college credit at their high school through dual credit programs. When these students are excluded from the headcount, the grand total for UMKC is 12,147 and the grand total for UMSL is 12,334.

Source: EMSAS Fall Enrollment file

IR&P/LCB 01/06

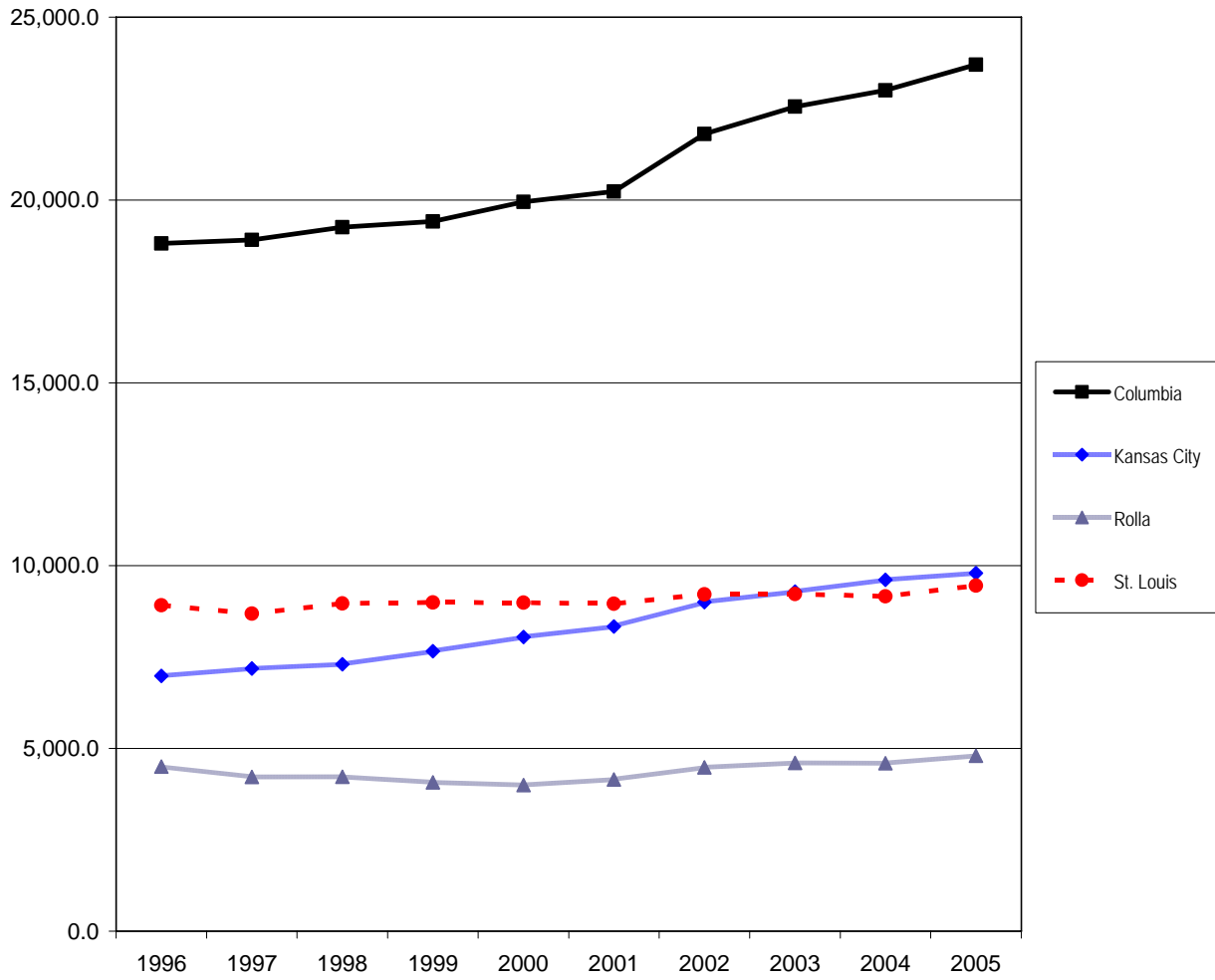
Table 1c. Summary of Fall Enrollments

		Campus				Total
		Columbia	Kansas City	Rolla	St Louis	
Undergraduate	Headcount	21,335	9,487	4,311	12,606	47,739
	Full-time Equivalent	19,439.8	6,539.8	4,000.0	7,946.5	37,926.1
	Resident	18,280	7,501	3,493	11,699	40,973
	Nonresident	3,055	1,986	818	907	6,766
	Full-time	19,965	5,676	3,892	5,887	35,420
	Part-time	1,370	3,811	419	6,719	12,319
Professional	Headcount	1,083	1,523		164	2,770
	Full-time Equivalent	1,066.2	1,499.8		164.0	2,730.0
	Resident	1,036	1,125		87	2,248
	Nonresident	47	398		77	522
	Full-time	978	1,507		164	2,649
	Part-time	105	16			121
Graduate	Headcount	5,512	3,296	1,289	2,778	12,875
	Full-time Equivalent	3,197.6	1,755.7	799.9	1,341.3	7,094.5
	Resident	3,312	1,898	450	2,330	7,990
	Nonresident	2,200	1,398	839	448	4,885
	Full-time	2,657	1,109	771	660	5,197
	Part-time	2,855	2,187	518	2,118	7,678
Grand Totals	Headcount	27,930	14,306	5,600	15,548	63,384
	Full-time Equivalent	23,703.6	9,795.3	4,799.9	9,451.9	47,750.7
	Resident	22,628	10,524	3,943	14,116	51,211
	Nonresident	5,302	3,782	1,657	1,432	12,173
	Full-time	23,600	8,292	4,663	6,711	43,266
	Part-time	4,330	6,014	937	8,837	20,118

Source: EMSAS Fall Enrollment file

IR&P/LCB 01/06

Figure 2. Full-time Equivalence History by Campus, 1996 to 2005



Source: EMSAS Fall Enrollment file
IR&P/RS 1/06

Full-time Equivalent History by Campus, 1996 to 2005

Campus	1996	1997	1998	1999	2000	2001	2002	2003	2004	2005
Columbia	18,814.0	18,909.0	19,259.0	19,412.0	19,950.0	20,231.0	21,804.0	22,556.0	23,000.0	23,703.6
Kansas City	6,983.0	7,184.0	7,300.0	7,656.0	8,049.0	8,334.0	9,001.0	9,290.0	9,607.7	9,795.3
Rolla	4,501.0	4,219.0	4,225.0	4,070.0	3,997.0	4,148.0	4,481.0	4,604.0	4,594.1	4,799.9
St. Louis	8,918.0	8,689.0	8,965.0	8,994.0	8,986.0	8,958.0	9,214.0	9,224.0	9,162.0	9,451.9
Total	39,216.0	39,001.0	39,749.0	40,132.0	40,982.0	41,671.0	44,500.0	45,674.0	46,363.8	47,750.7

Table 2.0 Headcounts, Full-Time Equivalence, and Student Credit Hours

	<u>UM System</u>											
	<u>On-Campus</u>				<u>Off-Campus</u>				<u>Total</u>			
	FS04	FS05	<u>Change</u>		FS04	FS05	<u>Change</u>		FS04	FS05	<u>Change</u>	
		#	%			#	%			#	%	
Headcount by Student Level												
Undergraduate												
Freshman & Sophomore DS	17,136	17,577	441	3%	11	19	8	73%	17,147	17,596	449	3%
Junior & Senior DS	22,993	23,702	709	3%	116	153	37	32%	23,109	23,855	746	3%
Nondegree	<u>764</u>	<u>763</u>	<u>-1</u>	0%	<u>5,947</u>	<u>5,525</u>	<u>-422</u>	-7%	<u>6,711</u>	<u>6,288</u>	<u>-423</u>	-6%
Total	40,893	42,042	1,149	3%	6,074	5,697	-377	-6%	46,967	47,739	772	2%
First Professional												
Dentistry (DDS)	381	388	7	2%	0	0	0		381	388	7	2%
Law (JD)	974	972	-2	0%	0	0	0		974	972	-2	0%
Medicine (MD)	726	736	10	1%	0	0	0		726	736	10	1%
Optometry (OD)	165	164	-1	-1%	0	0	0		165	164	-1	-1%
Pharmacy (DPharm)	225	243	18	8%	0	0	0		225	243	18	8%
Vet. Med. (DVM)	<u>257</u>	<u>267</u>	<u>10</u>	4%	<u>0</u>	<u>0</u>	<u>0</u>		<u>257</u>	<u>267</u>	<u>10</u>	4%
Total	2,728	2,770	42	2%	0	0	0		2,728	2,770	42	2%
Graduate												
Masters & Ed. Spec.	7,293	7,350	57	1%	1,045	1,202	157	15%	8,338	8,552	214	3%
Doctoral	3,216	3,356	140	4%	110	113	3	3%	3,326	3,469	143	4%
Nondegree	<u>487</u>	<u>446</u>	<u>-41</u>	-8%	<u>315</u>	<u>408</u>	<u>93</u>	30%	<u>802</u>	<u>854</u>	<u>52</u>	6%
Total	10,996	11,152	156	1%	1,470	1,723	253	17%	12,466	12,875	409	3%
Grand Total	54,617	55,964	1,347	2%	7,544	7,420	-124	-2%	62,161	63,384	1,223	2%
FTE Enrollments by Student Level												
Undergraduate	34,982.4	36,122.5	1,140.1	3%	1,901.9	1,803.6	-98.3	-5%	36,884.3	37,926.1	1,041.8	3%
First Professional	2,681.0	2,730.0	49.0	2%	0.0	0.0	0.0		2,681.0	2,730.0	49.0	2%
Graduate	<u>6,203.0</u>	<u>6,400.3</u>	<u>197.3</u>	3%	<u>595.6</u>	<u>694.3</u>	<u>98.7</u>	17%	<u>6,798.5</u>	<u>7,094.5</u>	<u>296.0</u>	4%
Total	43,866.4	45,252.8	1,386.4	3%	2,497.5	2,497.9	0.4	0%	46,363.9	47,750.6	1,386.7	3%
SCH Produced by Student Level												
Undergraduate	524,735	541,837	17,102	3%	28,529	27,055	-1,474	-5%	553,264	568,892	15,628	3%
First Professional	45,920	47,501	1,582	3%	0	0	0		45,920	47,501	1,582	3%
Graduate	<u>74,436</u>	<u>76,804</u>	<u>2,368</u>	3%	<u>7,147</u>	<u>8,331</u>	<u>1,184</u>	17%	<u>81,583</u>	<u>85,135</u>	<u>3,552</u>	4%
Total	645,090	666,142	21,052	3%	35,676	35,386	-290	-1%	680,766	701,528	20,762	3%

Source: EMSAS Fall Enrollment file

IR&P/LCB 01/06

Table 2.1 Headcounts, Full-Time Equivalence, and Student Credit Hours

	UM-Columbia											
	On-Campus				Off-Campus				Total			
	FS04	FS05	Change		FS04	FS05	Change		FS04	FS05	Change	
		#	%			#	%			#	%	
Headcount by Student Level												
Undergraduate												
Freshman & Sophomore DS	10,520	10,633	113	1%	7	9	2	29%	10,527	10,642	115	1%
Junior & Senior DS	9,929	10,268	339	3%	85	108	23	27%	10,014	10,376	362	4%
Nondegree	<u>192</u>	<u>225</u>	<u>33</u>	17%	<u>150</u>	<u>92</u>	<u>-58</u>	-39%	<u>342</u>	<u>317</u>	<u>-25</u>	-7%
Total	20,641	21,126	485	2%	242	209	-33	-14%	20,883	21,335	452	2%
First Professional												
Law (JD)	439	444	5	1%	0	0	0		439	444	5	1%
Medicine (MD)	373	372	-1	0%	0	0	0		373	372	-1	0%
Vet. Med. (DVM)	<u>257</u>	<u>267</u>	<u>10</u>	4%	<u>0</u>	<u>0</u>	<u>0</u>		<u>257</u>	<u>267</u>	<u>10</u>	4%
Total	1,069	1,083	14	1%	0	0	0		1,069	1,083	14	1%
Graduate												
Masters & Ed. Spec.	2,117	2,196	79	4%	584	695	111	19%	2,701	2,891	190	7%
Doctoral	1,848	1,990	142	8%	95	82	-13	-14%	1,943	2,072	129	7%
Nondegree	<u>201</u>	<u>223</u>	<u>22</u>	11%	<u>206</u>	<u>326</u>	<u>120</u>	58%	<u>407</u>	<u>549</u>	<u>142</u>	35%
Total	4,166	4,409	243	6%	885	1,103	218	25%	5,051	5,512	461	9%
Grand Total	25,876	26,618	742	3%	1,127	1,312	185	16%	27,003	27,930	927	3%
FTE Enrollments by Student Level												
Undergraduate												
	18,905.3	19,372.1	466.8	2%	74.1	67.7	-6.3	-9%	18,979.3	19,439.8	460.5	2%
First Professional	1,048.0	1,066.2	18.2	2%	0.0	0.0	0.0		1,048.0	1,066.2	18.2	2%
Graduate	<u>2,624.6</u>	<u>2,770.1</u>	<u>145.5</u>	6%	<u>348.1</u>	<u>427.5</u>	<u>79.4</u>	23%	<u>2,972.7</u>	<u>3,197.6</u>	<u>224.9</u>	8%
Total	22,577.9	23,208.4	630.5	3%	422.1	495.2	73.1	17%	23,000.0	23,703.6	703.5	3%
SCH Produced by Student Level												
Undergraduate												
	283,579	290,581	7,002	2%	1,111	1,016	-95	-9%	284,690	291,597	6,907	2%
First Professional	16,131	17,050	919	6%	0	0	0		16,131	17,050	919	6%
Graduate	<u>31,496</u>	<u>33,241</u>	<u>1,746</u>	6%	<u>4,177</u>	<u>5,130</u>	<u>953</u>	23%	<u>35,673</u>	<u>38,371</u>	<u>2,699</u>	8%
Total	331,205	340,872	9,667	3%	5,288	6,146	858	16%	336,493	347,018	10,525	3%

Source: EMSAS Fall Enrollment file

IR&P/LCB.CB 01/06

Table 2.2 Headcounts, Full-Time Equivalence, and Student Credit Hours

	UM-Kansas City											
	On-Campus				Off-Campus				Total			
	FS04	FS05	Change		FS04	FS05	Change		FS04	FS05	Change	
#			%	#			%	#			%	
Headcount by Student Level												
Undergraduate												
Freshman & Sophomore DS	2,612	2,865	253	10%	1	0	-1		2,613	2,865	252	10%
Junior & Senior DS	4,180	4,200	20	0%	0	0	0		4,180	4,200	20	0%
Nondegree	<u>305</u>	<u>273</u>	<u>-32</u>	-10%	<u>2,295</u>	<u>2,149</u>	<u>-146</u>	-6%	<u>2,600</u>	<u>2,422</u>	<u>-178</u>	-7%
Total	7,097	7,338	241	3%	2,296	2,149	-147	-6%	9,393	9,487	94	1%
First Professional												
Dentistry (DDS)	381	388	7	2%	0	0	0		381	388	7	2%
Law (JD)	535	528	-7	-1%	0	0	0		535	528	-7	-1%
Medicine (MD)	353	364	11	3%	0	0	0		353	364	11	3%
Pharmacy (DPharm)	<u>225</u>	<u>243</u>	<u>18</u>	8%	<u>0</u>	<u>0</u>	<u>0</u>		<u>225</u>	<u>243</u>	<u>18</u>	8%
Total	1,494	1,523	29	2%	0	0	0		1,494	1,523	29	2%
Graduate												
Masters & Ed. Spec.	2,622	2,570	-52	-2%	0	0	0		2,622	2,570	-52	-2%
Doctoral	546	543	-3	-1%	0	0	0		546	543	-3	-1%
Nondegree	<u>181</u>	<u>142</u>	<u>-39</u>	-22%	<u>20</u>	<u>41</u>	<u>21</u>	105%	<u>201</u>	<u>183</u>	<u>-18</u>	-9%
Total	3,349	3,255	-94	-3%	20	41	21	105%	3,369	3,296	-73	-2%
Grand Total	11,940	12,116	176	1%	2,316	2,190	-126	-5%	14,256	14,306	50	0%
FTE Enrollments by Student Level												
Undergraduate	5,779.4	6,012.1	232.7	4%	575.1	527.7	-47.4	-8%	6,354.5	6,539.8	185.3	3%
First Professional	1,468.0	1,499.8	31.8	2%	0.0	0.0	0.0		1,468.0	1,499.8	31.8	2%
Graduate	<u>1,780.8</u>	<u>1,746.7</u>	<u>-34.1</u>	-2%	<u>4.4</u>	<u>9.0</u>	<u>4.6</u>	104%	<u>1,785.2</u>	<u>1,755.7</u>	<u>-29.5</u>	-2%
Total	9,028.3	9,258.6	230.3	3%	579.5	536.7	-42.8	-7%	9,607.7	9,795.3	187.5	2%
SCH Produced by Student Level												
Undergraduate	86,690	90,181	3,491	4%	8,626	7,916	-710	-8%	95,316	98,097	2,781	3%
First Professional	26,458	27,113	655	2%	0	0	0		26,458	27,113	655	2%
Graduate	<u>21,370</u>	<u>20,961</u>	<u>-410</u>	-2%	<u>53</u>	<u>108</u>	<u>55</u>	104%	<u>21,423</u>	<u>21,069</u>	<u>-355</u>	-2%
Total	134,518	138,254	3,736	3%	8,679	8,024	-655	-8%	143,197	146,278	3,081	2%

Source: EMSAS Fall Enrollment file

IR&P/LCB 01/06

Table 2.3 Headcounts, Full-Time Equivalence, and Student Credit Hours

	UM-Rolla											
	On-Campus				Off-Campus				Total			
	FS04	FS05	Change		FS04	FS05	Change		FS04	FS05	Change	
#			%	#			%	#			%	
Headcount by Student Level												
Undergraduate												
Freshman & Sophomore DS	1,896	1,915	19	1%	0	0	0	0%	1,896	1,915	19	1%
Junior & Senior DS	2,122	2,304	182	9%	0	0	0	0%	2,122	2,304	182	9%
Nondegree	<u>49</u>	<u>29</u>	<u>-20</u>	<u>-41%</u>	<u>52</u>	<u>63</u>	<u>11</u>	<u>21%</u>	<u>101</u>	<u>92</u>	<u>-9</u>	<u>-9%</u>
Total	4,067	4,248	181	4%	52	63	11	21%	4,119	4,311	192	5%
Graduate												
Masters & Ed. Spec.	479	487	8	2%	363	410	47	13%	842	897	55	7%
Doctoral	370	357	-13	-4%	7	12	5	71%	377	369	-8	-2%
Nondegree	<u>18</u>	<u>8</u>	<u>-10</u>	<u>-56%</u>	<u>48</u>	<u>15</u>	<u>-33</u>	<u>-69%</u>	<u>66</u>	<u>23</u>	<u>-43</u>	<u>-65%</u>
Total	867	852	-15	-2%	418	437	19	5%	1,285	1,289	4	0%
Grand Total	4,934	5,100	166	3%	470	500	30	6%	5,404	5,600	196	4%
FTE Enrollments by Student Level												
Undergraduate	3,804.8	3,986.6	181.8	5%	10.5	13.4	2.9	27%	3,815.3	4,000.0	184.7	5%
Graduate	<u>579.4</u>	<u>587.9</u>	<u>8.5</u>	<u>1%</u>	<u>199.3</u>	<u>212.0</u>	<u>12.7</u>	<u>6%</u>	<u>778.8</u>	<u>799.9</u>	<u>21.2</u>	<u>3%</u>
Total	4,384.2	4,574.5	190.3	4%	209.9	225.4	15.5	7%	4,594.1	4,799.9	205.8	4%
SCH Produced by Student Level												
Undergraduate	57,072	59,799	2,727	5%	158	201	43	27%	57,230	60,000	2,770	5%
Graduate	<u>6,953</u>	<u>7,055</u>	<u>102</u>	<u>1%</u>	<u>2,392</u>	<u>2,544</u>	<u>152</u>	<u>6%</u>	<u>9,345</u>	<u>9,599</u>	<u>254</u>	<u>3%</u>
Total	64,025	66,854	2,829	4%	2,550	2,745	195	8%	66,575	69,599	3,024	5%

Source: EMSAS Fall Enrollment file

IR&P/LCB 01/06

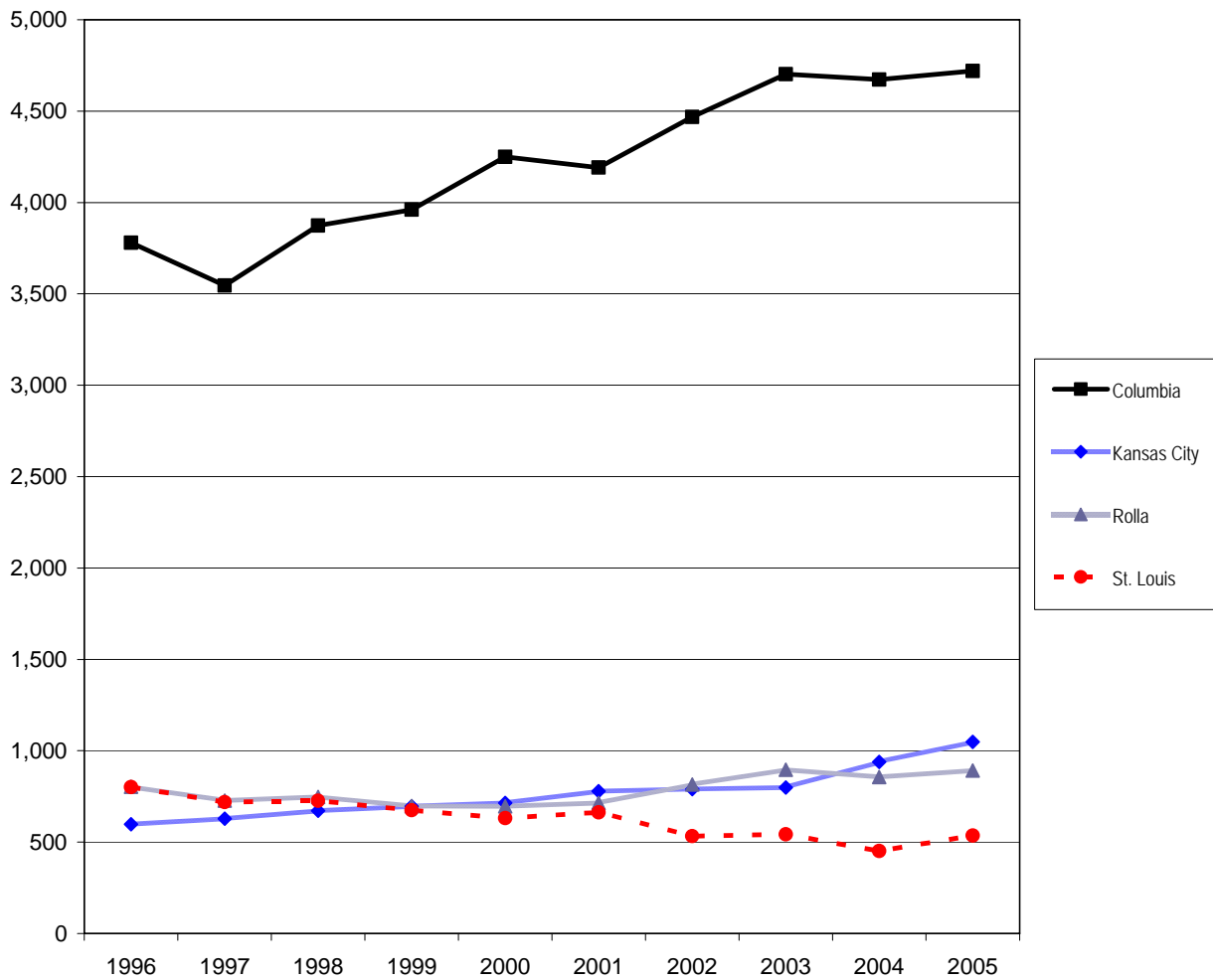
Table 2.4 Headcounts, Full-Time Equivalence, and Student Credit Hours

	UM-St. Louis											
	On-Campus				Off-Campus				Total			
	FS04	FS05	Change		FS04	FS05	Change		FS04	FS05	Change	
#			%	#			%	#			%	
Headcount by Student Level												
Undergraduate												
Freshman & Sophomore DS	2,108	2,164	56	3%	3	10	7	233%	2,111	2,174	63	3%
Junior & Senior DS	6,762	6,930	168	2%	31	45	14	45%	6,793	6,975	182	3%
Nondegree	<u>218</u>	<u>236</u>	<u>18</u>	8%	<u>3,450</u>	<u>3,221</u>	<u>-229</u>	-7%	<u>3,668</u>	<u>3,457</u>	<u>-211</u>	-6%
Total	9,088	9,330	242	3%	3,484	3,276	-208	-6%	12,572	12,606	34	0%
First Professional												
Optometry (OD)	<u>165</u>	<u>164</u>	<u>-1</u>	-1%	<u>0</u>	<u>0</u>	<u>0</u>		<u>165</u>	<u>164</u>	<u>-1</u>	-1%
Total	165	164	-1	-1%	0	0	0		165	164	-1	-1%
Graduate												
Masters & Ed. Spec.	2,075	2,097	22	1%	98	97	-1	-1%	2,173	2,194	21	1%
Doctoral	452	466	14	3%	8	19	11	138%	460	485	25	5%
Nondegree	<u>87</u>	<u>73</u>	<u>-14</u>	-16%	<u>41</u>	<u>26</u>	<u>-15</u>	-37%	<u>128</u>	<u>99</u>	<u>-29</u>	-23%
Total	2,614	2,636	22	1%	147	142	-5	-3%	2,761	2,778	17	1%
Grand Total	11,867	12,130	263	2%	3,631	3,418	-213	-6%	15,498	15,548	50	0%
FTE Enrollments by Student Level												
Undergraduate	6,492.9	6,751.7	258.8	4%	1,242.3	1,194.8	-47.5	-4%	7,735.2	7,946.5	211.3	3%
First Professional	165.0	164.0	-1.0	-1%	0.0	0.0	0.0		165.0	164.0	-1.0	-1%
Graduate	<u>1,218.1</u>	<u>1,295.6</u>	<u>77.5</u>	6%	<u>43.8</u>	<u>45.8</u>	<u>2.0</u>	5%	<u>1,261.8</u>	<u>1,341.3</u>	<u>79.5</u>	6%
Total	7,876.0	8,211.3	335.3	4%	1,286.0	1,240.6	-45.5	-4%	9,162.0	9,451.9	289.8	3%
SCH Produced by Student Level												
Undergraduate	97,394	101,276	3,882	4%	18,634	17,922	-712	-4%	116,028	119,198	3,170	3%
First Professional	3,331	3,339	8	0%	0	0	0		3,331	3,339	8	0%
Graduate	<u>14,617</u>	<u>15,547</u>	<u>930</u>	6%	<u>525</u>	<u>549</u>	<u>24</u>	5%	<u>15,142</u>	<u>16,096</u>	<u>954</u>	6%
Total	115,342	120,162	4,820	4%	19,159	18,471	-688	-4%	134,501	138,633	4,132	3%

Source: EMSAS Fall Enrollment file

IR&P/LCB 01/06

Figure 3a. First-time College Freshmen History, 1996 to 2005

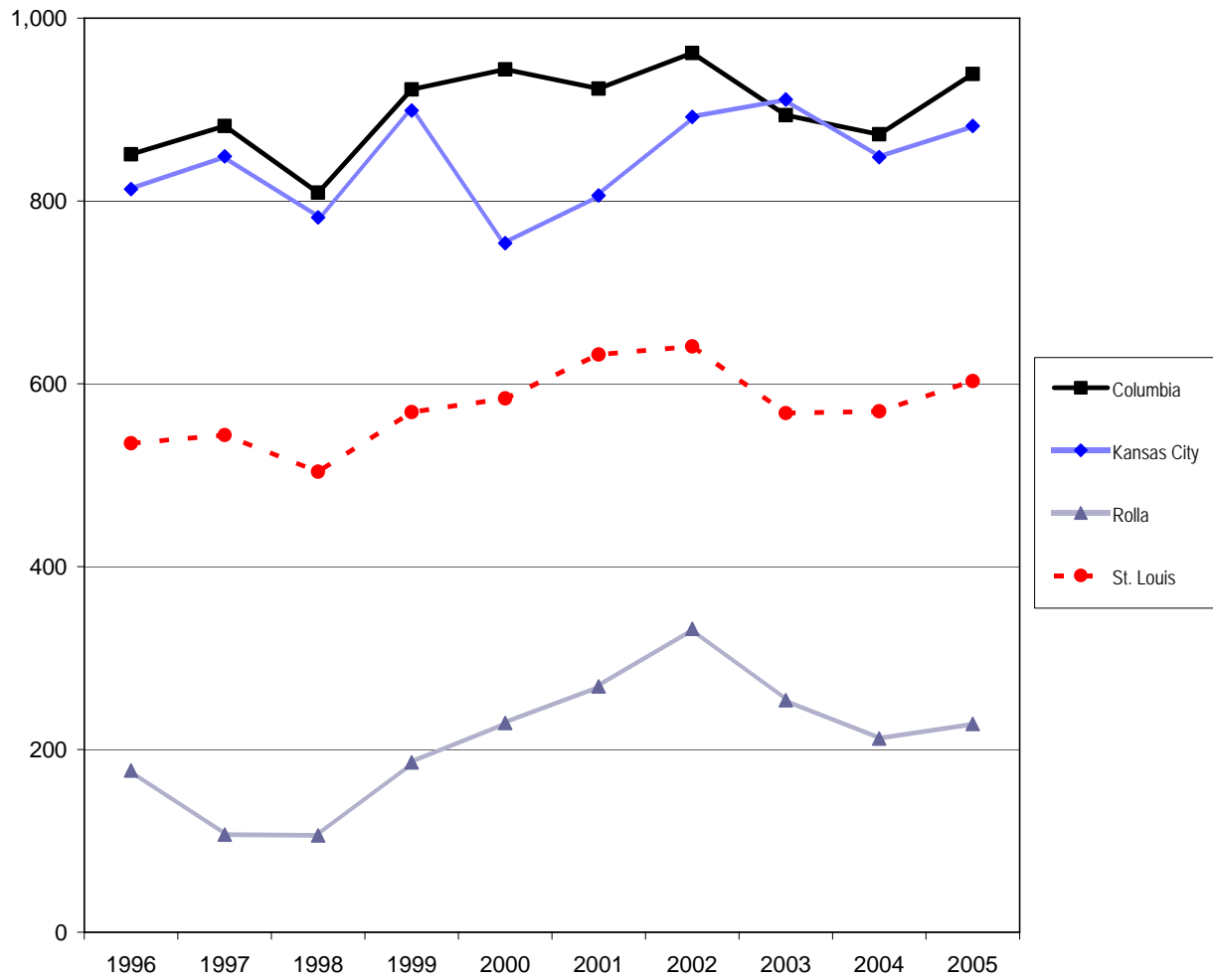


Source: EMSAS Fall Enrollment file
IR&P/RS 1/06

First-time College Freshmen History, 1995 to 2004

Campus	1996	1997	1998	1999	2000	2001	2002	2003	2004	2005
Columbia	3,780	3,546	3,874	3,961	4,250	4,191	4,468	4,702	4,673	4,720
Kansas City	598	628	671	696	715	778	790	799	939	1,048
Rolla	803	728	747	697	696	715	815	897	856	892
St. Louis	801	719	726	674	631	663	533	542	451	536
Total	5,982	5,621	6,018	6,028	6,292	6,347	6,606	6,940	6,919	7,196

Figure 3b. New Graduate Student History by Campus, 1996 to 2005

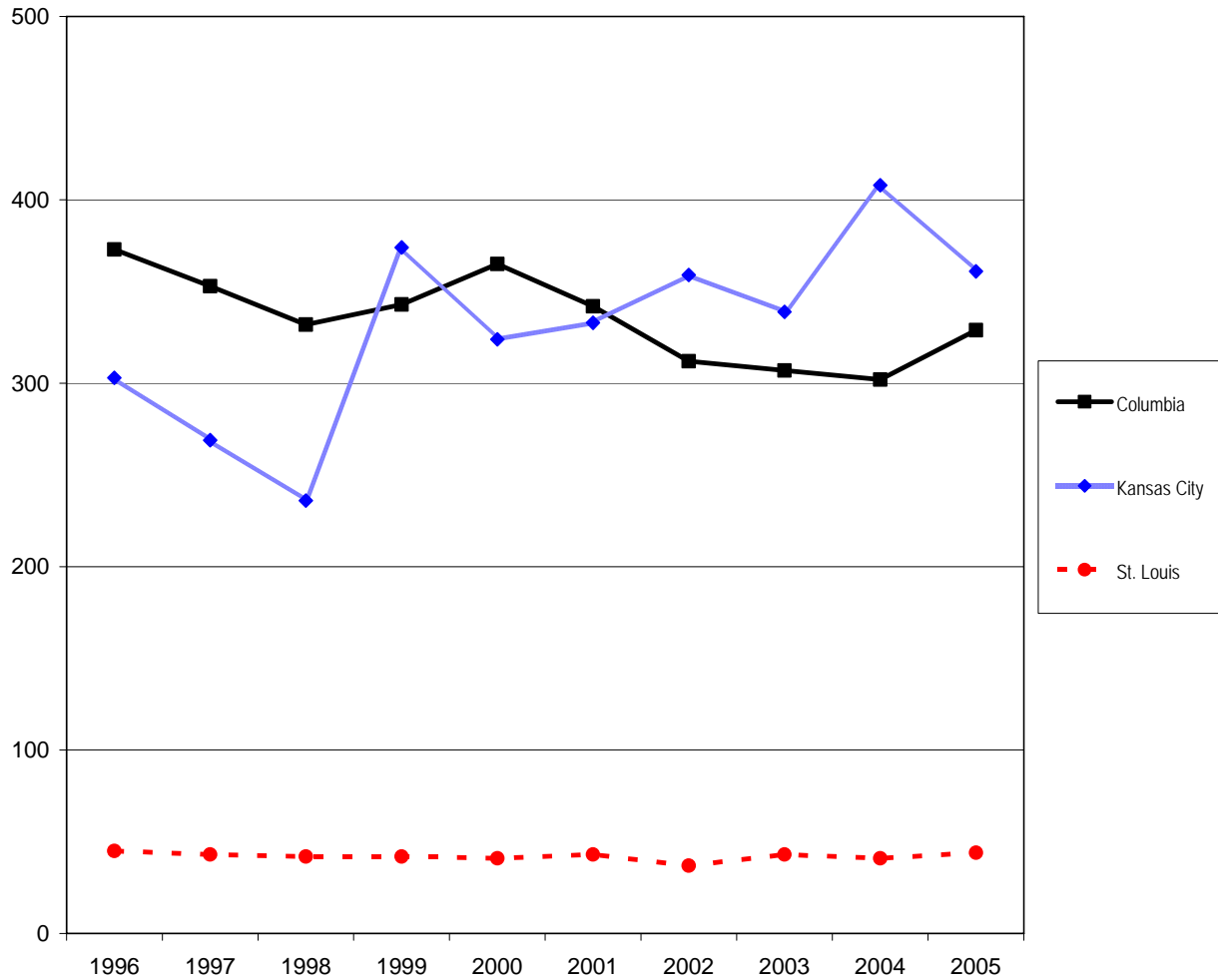


* Includes First-Professional students
 Source: EMSAS Fall Enrollment file
 IR&P/RS 1/06

New Graduate Student History by Campus, 1996 to 2005

Campus	1996	1997	1998	1999	2000	2001	2002	2003	2004	2005
Columbia	851	882	809	922	944	923	962	894	873	939
Kansas City	813	849	782	899	754	806	892	911	848	882
Rolla	177	107	106	186	229	269	332	254	212	228
St. Louis	535	544	504	569	584	632	641	568	570	603
Total	2,376	2,382	2,201	2,576	2,511	2,630	2,827	2,627	2,503	2,652

Figure 3c. New First Professional Student History by Campus, 1996 to 2005



* Includes First-Professional students
 Source: EMSAS Fall Enrollment file
 IR&P/RS 1/06

New First Professional Student History by Campus, 1996 to 2005

Campus	1996	1997	1998	1999	2000	2001	2002	2003	2004	2005
Columbia	373	353	332	343	365	342	312	307	302	329
Kansas City	303	269	236	374	324	333	359	339	408	361
St. Louis	45	43	42	42	41	43	37	43	41	44
Total	721	665	610	759	730	718	708	689	751	734

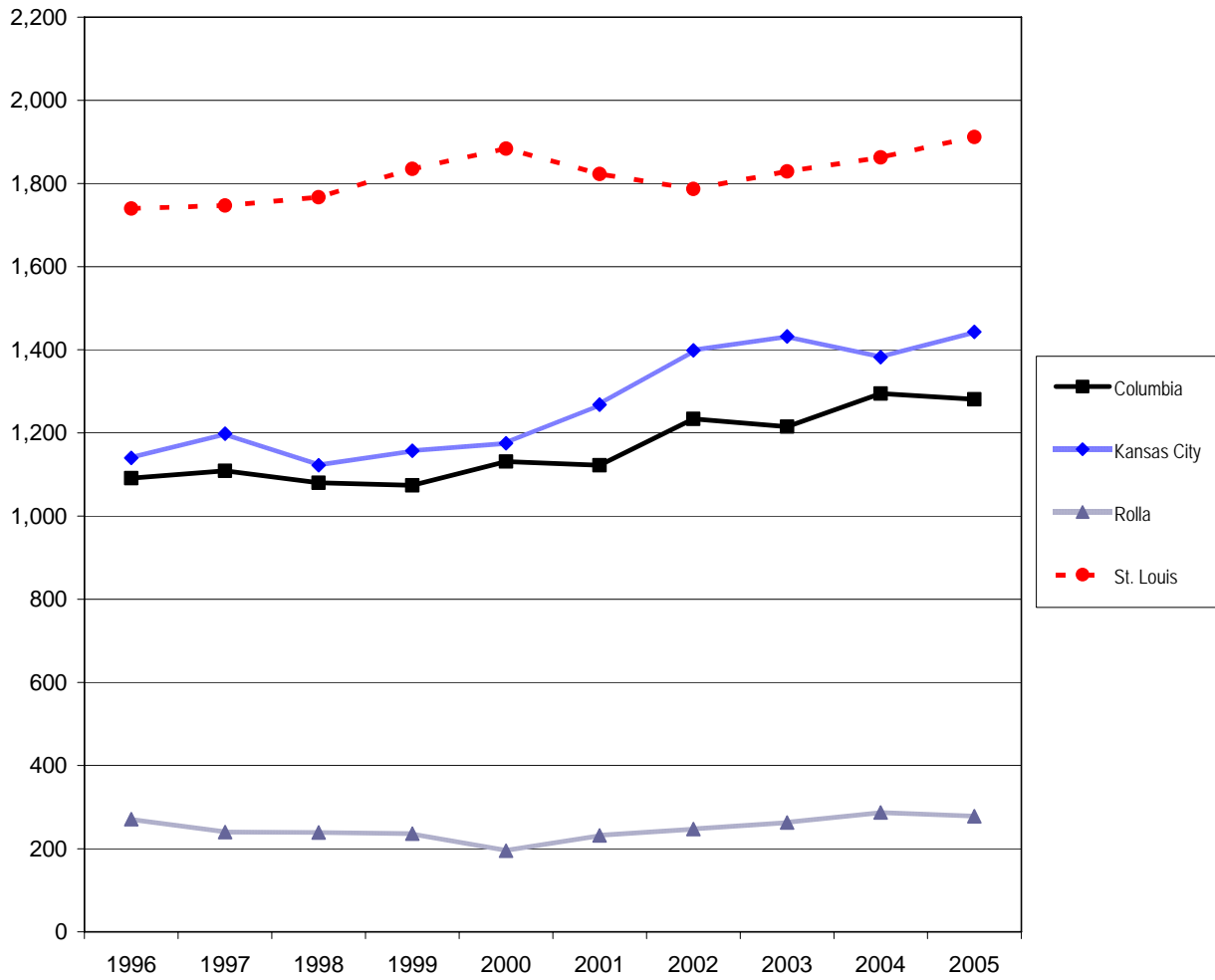
Table 3. New Student Headcount, Fall 2001 - Fall 2005

		2001	2002	2003	2004	2005	5 yr. Change
Columbia							
Freshmen							
	Degree-Seeking	4,167	4,439	4,669	4,668	4,718	13%
	Non Degree-Seeking	24	29	33	5	2	-92%
Undergraduate Transfers							
	Degree-Seeking	1,016	1,124	1,122	1,217	1,178	16%
	Non Degree-Seeking	106	110	93	78	103	-3%
Professional							
	Degree-Seeking	312	312	307	302	329	5%
Graduate							
	Degree-Seeking	804	833	803	770	841	5%
	Non Degree-Seeking	119	129	91	103	98	-18%
Kansas City							
Freshmen							
	Degree-Seeking	772	780	788	921	1,039	35%
	Non Degree-Seeking	6	10	11	18	9	50%
Undergraduate Transfers							
	Degree-Seeking	1,107	1,197	1,265	1,246	1,302	18%
	Non Degree-Seeking	161	202	167	136	141	-12%
Professional							
	Degree-Seeking	359	359	339	408	361	1%
Graduate							
	Degree-Seeking	688	768	806	766	801	16%
	Non Degree-Seeking	118	124	105	82	81	-31%
Rolla							
Freshmen							
	Degree-Seeking	702	795	878	842	884	26%
	Non Degree-Seeking	13	20	19	14	8	-38%
Undergraduate Transfers							
	Degree-Seeking	217	231	254	279	273	26%
	Non Degree-Seeking	15	16	9	8	5	-67%
Graduate							
	Degree-Seeking	265	324	237	242	225	-15%
	Non Degree-Seeking	4	8	17	13	3	-25%
St Louis							
Freshmen							
	Degree-Seeking	634	519	534	449	531	-16%
	Non Degree-Seeking	29	14	8	2	5	-83%
Undergraduate Transfers							
	Degree-Seeking	1,609	1,613	1,728	1,752	1,762	10%
	Non Degree-Seeking	214	174	101	111	150	-30%
Professional							
	Degree-Seeking	37	37	43	41	44	19%
Graduate							
	Degree-Seeking	603	615	540	547	576	-4%
	Non Degree-Seeking	29	26	28	23	27	-7%

Source: EMSAS Fall Enrollment file

IR&P/LCB 01/06

Figure 4. First-time On-Campus Undergraduate Transfer Student History by Campus, 1996 to 2005



Source: EMSAS Fall Enrollment file
IR&P/RS 1/06

First-time On-Campus Undergraduate Transfer Student History by Campus, 1995 to 2004

Campus	1996	1997	1998	1999	2000	2001	2002	2003	2004	2005
Columbia	1,091	1,109	1,080	1,074	1,131	1,122	1,234	1,215	1,295	1,281
Kansas City	1,140	1,198	1,122	1,157	1,175	1,268	1,399	1,432	1,382	1,443
Rolla	271	240	239	236	195	232	247	263	287	278
St. Louis	1,740	1,747	1,767	1,835	1,884	1,823	1,787	1,829	1,863	1,912
Total	4,242	4,294	4,208	4,302	4,385	4,445	4,667	4,739	4,827	4,914

Table 4.0 Full-Time, Part-Time, Resident, and Nonresident Students

Student Level	Residency	UM System									% Full-Time	% Resident
		On-Campus			Off-Campus			Total				
		Full-Time	Part-Time	Total	Full-Time	Part-Time	Total	Full-Time	Part-Time	Total		
Undergraduate												
Freshman & Soph DS	Resident	13,480	960	14,440	2	16	18	13,482	976	14,458	94%	82%
	Nonresident	<u>2,988</u>	<u>149</u>	<u>3,137</u>	<u>0</u>	<u>1</u>	<u>1</u>	<u>2,988</u>	<u>150</u>	<u>3,138</u>		
	Total	16,468	1,109	17,577	2	17	19	16,470	1,126	17,596		
Junior & Senior DS	Resident	16,010	4,416	20,426	7	119	126	16,017	4,535	20,552	79%	86%
	Nonresident	<u>2,723</u>	<u>553</u>	<u>3,276</u>	<u>1</u>	<u>26</u>	<u>27</u>	<u>2,724</u>	<u>579</u>	<u>3,303</u>		
	Total	18,733	4,969	23,702	8	145	153	18,741	5,114	23,855		
Nondegree	Resident	45	488	533	72	5,358	5,430	117	5,846	5,963	3%	95%
	Nonresident	<u>90</u>	<u>140</u>	<u>230</u>	<u>2</u>	<u>93</u>	<u>95</u>	<u>92</u>	<u>233</u>	<u>325</u>		
	Total	135	628	763	74	5,451	5,525	209	6,079	6,288		
Total Undergrad.	Resident	29,535	5,864	35,399	81	5,493	5,574	29,616	11,357	40,973	74%	86%
	Nonresident	<u>5,801</u>	<u>842</u>	<u>6,643</u>	<u>3</u>	<u>120</u>	<u>123</u>	<u>5,804</u>	<u>962</u>	<u>6,766</u>		
	Total	35,336	6,706	42,042	84	5,613	5,697	35,420	12,319	47,739		
First Professional												
Dentistry (DDS)	Resident	239	0	239	0	0	0	239	0	239	100%	62%
	Nonresident	<u>149</u>	<u>0</u>	<u>149</u>	<u>0</u>	<u>0</u>	<u>0</u>	<u>149</u>	<u>0</u>	<u>149</u>		
	Total	388	0	388	0	0	0	388	0	388		
Law (JD)	Resident	804	19	823	0	0	0	804	19	823	97%	85%
	Nonresident	<u>143</u>	<u>6</u>	<u>149</u>	<u>0</u>	<u>0</u>	<u>0</u>	<u>143</u>	<u>6</u>	<u>149</u>		
	Total	947	25	972	0	0	0	947	25	972		
Medicine (MD)	Resident	533	89	622	0	0	0	533	89	622	88%	85%
	Nonresident	<u>112</u>	<u>2</u>	<u>114</u>	<u>0</u>	<u>0</u>	<u>0</u>	<u>112</u>	<u>2</u>	<u>114</u>		
	Total	645	91	736	0	0	0	645	91	736		
Optometry (OD)	Resident	87	0	87	0	0	0	87	0	87	100%	53%
	Nonresident	<u>77</u>	<u>0</u>	<u>77</u>	<u>0</u>	<u>0</u>	<u>0</u>	<u>77</u>	<u>0</u>	<u>77</u>		
	Total	164	0	164	0	0	0	164	0	164		
Pharmacy (DPharm)	Resident	228	0	228	0	0	0	228	0	228	100%	94%
	Nonresident	<u>15</u>	<u>0</u>	<u>15</u>	<u>0</u>	<u>0</u>	<u>0</u>	<u>15</u>	<u>0</u>	<u>15</u>		
	Total	243	0	243	0	0	0	243	0	243		
Vet. Med. (DVM)	Resident	244	5	249	0	0	0	244	5	249	98%	93%
	Nonresident	<u>18</u>	<u>0</u>	<u>18</u>	<u>0</u>	<u>0</u>	<u>0</u>	<u>18</u>	<u>0</u>	<u>18</u>		
	Total	262	5	267	0	0	0	262	5	267		
Total First Prof.	Resident	2,135	113	2,248	0	0	0	2,135	113	2,248	96%	81%
	Nonresident	<u>514</u>	<u>8</u>	<u>522</u>	<u>0</u>	<u>0</u>	<u>0</u>	<u>514</u>	<u>8</u>	<u>522</u>		
	Total	2,649	121	2,770	0	0	0	2,649	121	2,770		
Graduate												
Masters & Ed. Spec.	Resident	2,008	3,080	5,088	90	574	664	2,098	3,654	5,752	42%	67%
	Nonresident	<u>1,377</u>	<u>885</u>	<u>2,262</u>	<u>118</u>	<u>420</u>	<u>538</u>	<u>1,495</u>	<u>1,305</u>	<u>2,800</u>		
	Total	3,385	3,965	7,350	208	994	1,202	3,593	4,959	8,552		
Doctoral	Resident	448	1,068	1,516	2	86	88	450	1,154	1,604	44%	46%
	Nonresident	<u>1,062</u>	<u>778</u>	<u>1,840</u>	<u>2</u>	<u>23</u>	<u>25</u>	<u>1,064</u>	<u>801</u>	<u>1,865</u>		
	Total	1,510	1,846	3,356	4	109	113	1,514	1,955	3,469		
Nondegree	Resident	56	305	361	5	268	273	61	573	634	11%	74%
	Nonresident	<u>26</u>	<u>59</u>	<u>85</u>	<u>3</u>	<u>132</u>	<u>135</u>	<u>29</u>	<u>191</u>	<u>220</u>		
	Total	82	364	446	8	400	408	90	764	854		
Total Graduate	Resident	2,512	4,453	6,965	97	928	1,025	2,609	5,381	7,990	40%	62%
	Nonresident	<u>2,465</u>	<u>1,722</u>	<u>4,187</u>	<u>123</u>	<u>575</u>	<u>698</u>	<u>2,588</u>	<u>2,297</u>	<u>4,885</u>		
	Total	4,977	6,175	11,152	220	1,503	1,723	5,197	7,678	12,875		
Grand Total	Resident	34,182	10,430	44,612	178	6,421	6,599	34,360	16,851	51,211	68%	81%
	Nonresident	<u>8,780</u>	<u>2,572</u>	<u>11,352</u>	<u>126</u>	<u>695</u>	<u>821</u>	<u>8,906</u>	<u>3,267</u>	<u>12,173</u>		
	Total	42,962	13,002	55,964	304	7,116	7,420	43,266	20,118	63,384		

Source: EMSAS Fall Enrollment file

IR&P/LCB 1/06

Table 4.1 Full-Time, Part-Time, Resident, and Nonresident Students

Student Level	Residency	UM-Columbia									% Full-Time	% Resident
		On-Campus			Off-Campus			Total				
		Full-Time	Part-Time	Total	Full-Time	Part-Time	Total	Full-Time	Part-Time	Total		
Undergraduate												
Freshman & Soph DS	Resident	8,550	249	8,799	2	6	8	8,552	255	8,807	97%	83%
	Nonresident	<u>1,803</u>	<u>31</u>	<u>1,834</u>	<u>0</u>	<u>1</u>	<u>1</u>	<u>1,803</u>	<u>32</u>	<u>1,835</u>		
	Total	10,353	280	10,633	2	7	9	10,355	287	10,642		
Junior & Senior DS	Resident	8,499	657	9,156	5	80	85	8,504	737	9,241	92%	89%
	Nonresident	<u>1,073</u>	<u>39</u>	<u>1,112</u>	<u>1</u>	<u>22</u>	<u>23</u>	<u>1,074</u>	<u>61</u>	<u>1,135</u>		
	Total	9,572	696	10,268	6	102	108	9,578	798	10,376		
Nondegree	Resident	3	170	173	0	59	59	3	229	232	10%	73%
	Nonresident	<u>29</u>	<u>23</u>	<u>52</u>	<u>0</u>	<u>33</u>	<u>33</u>	<u>29</u>	<u>56</u>	<u>85</u>		
	Total	32	193	225	0	92	92	32	285	317		
Total Undergrad.	Resident	17,052	1,076	18,128	7	145	152	17,059	1,221	18,280	94%	86%
	Nonresident	<u>2,905</u>	<u>93</u>	<u>2,998</u>	<u>1</u>	<u>56</u>	<u>57</u>	<u>2,906</u>	<u>149</u>	<u>3,055</u>		
	Total	19,957	1,169	21,126	8	201	209	19,965	1,370	21,335		
First Professional												
Law (JD)	Resident	415	9	424	0	0	0	415	9	424	98%	95%
	Nonresident	<u>20</u>	<u>0</u>	<u>20</u>	<u>0</u>	<u>0</u>	<u>0</u>	<u>20</u>	<u>0</u>	<u>20</u>		
	Total	435	9	444	0	0	0	435	9	444		
Medicine (MD)	Resident	274	89	363	0	0	0	274	89	363	76%	98%
	Nonresident	<u>7</u>	<u>2</u>	<u>9</u>	<u>0</u>	<u>0</u>	<u>0</u>	<u>7</u>	<u>2</u>	<u>9</u>		
	Total	281	91	372	0	0	0	281	91	372		
Vet. Med. (DVM)	Resident	244	5	249	0	0	0	244	5	249	98%	93%
	Nonresident	<u>18</u>	<u>0</u>	<u>18</u>	<u>0</u>	<u>0</u>	<u>0</u>	<u>18</u>	<u>0</u>	<u>18</u>		
	Total	262	5	267	0	0	0	262	5	267		
Total First Prof.	Resident	933	103	1,036	0	0	0	933	103	1,036	90%	96%
	Nonresident	<u>45</u>	<u>2</u>	<u>47</u>	<u>0</u>	<u>0</u>	<u>0</u>	<u>45</u>	<u>2</u>	<u>47</u>		
	Total	978	105	1,083	0	0	0	978	105	1,083		
Graduate												
Masters & Ed. Spec.	Resident	976	525	1,501	85	333	418	1,061	858	1,919	57%	66%
	Nonresident	<u>550</u>	<u>145</u>	<u>695</u>	<u>38</u>	<u>239</u>	<u>277</u>	<u>588</u>	<u>384</u>	<u>972</u>		
	Total	1,526	670	2,196	123	572	695	1,649	1,242	2,891		
Doctoral	Resident	290	636	926	2	64	66	292	700	992	45%	48%
	Nonresident	<u>646</u>	<u>418</u>	<u>1,064</u>	<u>2</u>	<u>14</u>	<u>16</u>	<u>648</u>	<u>432</u>	<u>1,080</u>		
	Total	936	1,054	1,990	4	78	82	940	1,132	2,072		
Nondegree	Resident	41	156	197	4	200	204	45	356	401	12%	73%
	Nonresident	<u>20</u>	<u>6</u>	<u>26</u>	<u>3</u>	<u>119</u>	<u>122</u>	<u>23</u>	<u>125</u>	<u>148</u>		
	Total	61	162	223	7	319	326	68	481	549		
Total Graduate	Resident	1,307	1,317	2,624	91	597	688	1,398	1,914	3,312	48%	60%
	Nonresident	<u>1,216</u>	<u>569</u>	<u>1,785</u>	<u>43</u>	<u>372</u>	<u>415</u>	<u>1,259</u>	<u>941</u>	<u>2,200</u>		
	Total	2,523	1,886	4,409	134	969	1,103	2,657	2,855	5,512		
Grand Total	Resident	19,292	2,496	21,788	98	742	840	19,390	3,238	22,628	84%	81%
	Nonresident	<u>4,166</u>	<u>664</u>	<u>4,830</u>	<u>44</u>	<u>428</u>	<u>472</u>	<u>4,210</u>	<u>1,092</u>	<u>5,302</u>		
	Total	23,458	3,160	26,618	142	1,170	1,312	23,600	4,330	27,930		

Source: EMSAS Fall Enrollment file

IR&P/LCB 11/05

Table 4.2 Full-Time, Part-Time, Resident, and Nonresident Students

Student Level	Residency	UM-Kansas City									% Full-Time	% Resident
		On-Campus			Off-Campus			Total				
		Full-Time	Part-Time	Total	Full-Time	Part-Time	Total	Full-Time	Part-Time	Total		
Undergraduate												
Freshman & Soph DS	Resident	1,956	240	2,196	0	0	0	1,956	240	2,196	89%	77%
	Nonresident	<u>597</u>	<u>72</u>	<u>669</u>	<u>0</u>	<u>0</u>	<u>0</u>	<u>597</u>	<u>72</u>	<u>669</u>		
	Total	2,553	312	2,865	0	0	0	2,553	312	2,865		
Junior & Senior DS	Resident	2,215	792	3,007	0	0	0	2,215	792	3,007	74%	72%
	Nonresident	<u>878</u>	<u>315</u>	<u>1,193</u>	<u>0</u>	<u>0</u>	<u>0</u>	<u>878</u>	<u>315</u>	<u>1,193</u>		
	Total	3,093	1,107	4,200	0	0	0	3,093	1,107	4,200		
Nondegree	Resident	17	146	163	0	2,135	2,135	17	2,281	2,298	1%	95%
	Nonresident	<u>13</u>	<u>97</u>	<u>110</u>	<u>0</u>	<u>14</u>	<u>14</u>	<u>13</u>	<u>111</u>	<u>124</u>		
	Total	30	243	273	0	2,149	2,149	30	2,392	2,422		
Total Undergrad.	Resident	4,188	1,178	5,366	0	2,135	2,135	4,188	3,313	7,501	60%	79%
	Nonresident	<u>1,488</u>	<u>484</u>	<u>1,972</u>	<u>0</u>	<u>14</u>	<u>14</u>	<u>1,488</u>	<u>498</u>	<u>1,986</u>		
	Total	5,676	1,662	7,338	0	2,149	2,149	5,676	3,811	9,487		
First Professional												
Dentistry (DDS)	Resident	239	0	239	0	0	0	239	0	239	100%	62%
	Nonresident	<u>149</u>	<u>0</u>	<u>149</u>	<u>0</u>	<u>0</u>	<u>0</u>	<u>149</u>	<u>0</u>	<u>149</u>		
	Total	388	0	388	0	0	0	388	0	388		
Law (JD)	Resident	389	10	399	0	0	0	389	10	399	97%	76%
	Nonresident	<u>123</u>	<u>6</u>	<u>129</u>	<u>0</u>	<u>0</u>	<u>0</u>	<u>123</u>	<u>6</u>	<u>129</u>		
	Total	512	16	528	0	0	0	512	16	528		
Medicine (MD)	Resident	259	0	259	0	0	0	259	0	259	100%	71%
	Nonresident	<u>105</u>	<u>0</u>	<u>105</u>	<u>0</u>	<u>0</u>	<u>0</u>	<u>105</u>	<u>0</u>	<u>105</u>		
	Total	364	0	364	0	0	0	364	0	364		
Pharmacy (DPharm)	Resident	228	0	228	0	0	0	228	0	228	100%	94%
	Nonresident	<u>15</u>	<u>0</u>	<u>15</u>	<u>0</u>	<u>0</u>	<u>0</u>	<u>15</u>	<u>0</u>	<u>15</u>		
	Total	243	0	243	0	0	0	243	0	243		
Total First Prof.	Resident	1,115	10	1,125	0	0	0	1,115	10	1,125	99%	74%
	Nonresident	<u>392</u>	<u>6</u>	<u>398</u>	<u>0</u>	<u>0</u>	<u>0</u>	<u>392</u>	<u>6</u>	<u>398</u>		
	Total	1,507	16	1,523	0	0	0	1,507	16	1,523		
Graduate												
Masters & Ed. Spec.	Resident	515	1,036	1,551	0	0	0	515	1,036	1,551	37%	60%
	Nonresident	<u>444</u>	<u>575</u>	<u>1,019</u>	<u>0</u>	<u>0</u>	<u>0</u>	<u>444</u>	<u>575</u>	<u>1,019</u>		
	Total	959	1,611	2,570	0	0	0	959	1,611	2,570		
Doctoral	Resident	43	172	215	0	0	0	43	172	215	26%	40%
	Nonresident	<u>99</u>	<u>229</u>	<u>328</u>	<u>0</u>	<u>0</u>	<u>0</u>	<u>99</u>	<u>229</u>	<u>328</u>		
	Total	142	401	543	0	0	0	142	401	543		
Nondegree	Resident	7	91	98	1	33	34	8	124	132	4%	72%
	Nonresident	<u>0</u>	<u>44</u>	<u>44</u>	<u>0</u>	<u>7</u>	<u>7</u>	<u>0</u>	<u>51</u>	<u>51</u>		
	Total	7	135	142	1	40	41	8	175	183		
Total Graduate	Resident	565	1,299	1,864	1	33	34	566	1,332	1,898	34%	58%
	Nonresident	<u>543</u>	<u>848</u>	<u>1,391</u>	<u>0</u>	<u>7</u>	<u>7</u>	<u>543</u>	<u>855</u>	<u>1,398</u>		
	Total	1,108	2,147	3,255	1	40	41	1,109	2,187	3,296		
Grand Total	Resident	5,868	2,487	8,355	1	2,168	2,169	5,869	4,655	10,524	58%	74%
	Nonresident	<u>2,423</u>	<u>1,338</u>	<u>3,761</u>	<u>0</u>	<u>21</u>	<u>21</u>	<u>2,423</u>	<u>1,359</u>	<u>3,782</u>		
	Total	8,291	3,825	12,116	1	2,189	2,190	8,292	6,014	14,306		

Source: EMSAS Fall Enrollment file

IR&P/LCB 12/05

Table 4.3 Full-Time, Part-Time, Resident, and Nonresident Students

Student Level	Residency	UM-Rolla									% Full-Time	% Resident
		On-Campus			Off-Campus			Total				
		Full-Time	Part-Time	Total	Full-Time	Part-Time	Total	Full-Time	Part-Time	Total		
Undergraduate												
Freshman & Soph DS	Resident	1,453	53	1,506	0	0	0	1,453	53	1,506	97%	79%
	Nonresident	<u>395</u>	<u>14</u>	<u>409</u>	<u>0</u>	<u>0</u>	<u>0</u>	<u>395</u>	<u>14</u>	<u>409</u>		
	Total	1,848	67	1,915	0	0	0	1,848	67	1,915		
Junior & Senior DS	Resident	1,677	239	1,916	0	0	0	1,677	239	1,916	88%	83%
	Nonresident	<u>357</u>	<u>31</u>	<u>388</u>	<u>0</u>	<u>0</u>	<u>0</u>	<u>357</u>	<u>31</u>	<u>388</u>		
	Total	2,034	270	2,304	0	0	0	2,034	270	2,304		
Nondegree	Resident	6	19	25	0	46	46	6	65	71	11%	77%
	Nonresident	<u>4</u>	<u>0</u>	<u>4</u>	<u>0</u>	<u>17</u>	<u>17</u>	<u>4</u>	<u>17</u>	<u>21</u>		
	Total	10	19	29	0	63	63	10	82	92		
Total Undergrad.	Resident	3,136	311	3,447	0	46	46	3,136	357	3,493	90%	81%
	Nonresident	<u>756</u>	<u>45</u>	<u>801</u>	<u>0</u>	<u>17</u>	<u>17</u>	<u>756</u>	<u>62</u>	<u>818</u>		
	Total	3,892	356	4,248	0	63	63	3,892	419	4,311		
Graduate												
Masters	Resident	136	50	186	5	151	156	141	201	342	52%	38%
	Nonresident	<u>248</u>	<u>53</u>	<u>301</u>	<u>80</u>	<u>174</u>	<u>254</u>	<u>328</u>	<u>227</u>	<u>555</u>		
	Total	384	103	487	85	325	410	469	428	897		
Doctoral	Resident	67	21	88	0	6	6	67	27	94	82%	25%
	Nonresident	<u>234</u>	<u>35</u>	<u>269</u>	<u>0</u>	<u>6</u>	<u>6</u>	<u>234</u>	<u>41</u>	<u>275</u>		
	Total	301	56	357	0	12	12	301	68	369		
Nondegree	Resident	0	4	4	0	10	10	0	14	14	4%	61%
	Nonresident	<u>1</u>	<u>3</u>	<u>4</u>	<u>0</u>	<u>5</u>	<u>5</u>	<u>1</u>	<u>8</u>	<u>9</u>		
	Total	1	7	8	0	15	15	1	22	23		
Total Graduate	Resident	203	75	278	5	167	172	208	242	450	60%	35%
	Nonresident	<u>483</u>	<u>91</u>	<u>574</u>	<u>80</u>	<u>185</u>	<u>265</u>	<u>563</u>	<u>276</u>	<u>839</u>		
	Total	686	166	852	85	352	437	771	518	1,289		
Grand Total	Resident	3,339	386	3,725	5	213	218	3,344	599	3,943	83%	70%
	Nonresident	<u>1,239</u>	<u>136</u>	<u>1,375</u>	<u>80</u>	<u>202</u>	<u>282</u>	<u>1,319</u>	<u>338</u>	<u>1,657</u>		
	Total	4,578	522	5,100	85	415	500	4,663	937	5,600		

Source: EMSAS Fall Enrollment file

IR&P/LCB 01/06

Table 4.4 Full-Time, Part-Time, Resident, and Nonresident Students

Student Level	Residency	UM-St. Louis									% Full-Time	% Resident
		On-Campus			Off-Campus			Total				
		Full-Time	Part-Time	Total	Full-Time	Part-Time	Total	Full-Time	Part-Time	Total		
Undergraduate												
Freshman & Soph DS	Resident	1,521	418	1,939		10	10	1,521	428	1,949	79%	90%
	Nonresident	<u>193</u>	<u>32</u>	<u>225</u>	<u>0</u>	<u>0</u>	<u>0</u>	<u>193</u>	<u>32</u>	<u>225</u>		
	Total	1,714	450	2,164	0	10	10	1,714	460	2,174		
Junior & Senior DS	Resident	3,619	2,728	6,347	2	39	41	3,621	2,767	6,388	58%	92%
	Nonresident	<u>415</u>	<u>168</u>	<u>583</u>	<u>0</u>	<u>4</u>	<u>4</u>	<u>415</u>	<u>172</u>	<u>587</u>		
	Total	4,034	2,896	6,930	2	43	45	4,036	2,939	6,975		
Nondegree	Resident	19	153	172	72	3,118	3,190	91	3,271	3,362	4%	97%
	Nonresident	<u>44</u>	<u>20</u>	<u>64</u>	<u>2</u>	<u>29</u>	<u>31</u>	<u>46</u>	<u>49</u>	<u>95</u>		
	Total	63	173	236	74	3,147	3,221	137	3,320	3,457		
Total Undergrad.	Resident	5,159	3,299	8,458	74	3,167	3,241	5,233	6,466	11,699	47%	93%
	Nonresident	<u>652</u>	<u>220</u>	<u>872</u>	<u>2</u>	<u>33</u>	<u>35</u>	<u>654</u>	<u>253</u>	<u>907</u>		
	Total	5,811	3,519	9,330	76	3,200	3,276	5,887	6,719	12,606		
First Professional												
Optometry (OD)	Resident	87	0	87	0	0	0	87	0	87	100%	53%
	Nonresident	<u>77</u>	<u>0</u>	<u>77</u>	<u>0</u>	<u>0</u>	<u>0</u>	<u>77</u>	<u>0</u>	<u>77</u>		
	Total	164	0	164	0	0	0	164	0	164		
Total First Prof.	Resident	87	0	87	0	0	0	87	0	87	100%	53%
	Nonresident	<u>77</u>	<u>0</u>	<u>77</u>	<u>0</u>	<u>0</u>	<u>0</u>	<u>77</u>	<u>0</u>	<u>77</u>		
	Total	164	0	164	0	0	0	164	0	164		
Graduate												
Masters	Resident	381	1,469	1,850	0	90	90	381	1,559	1,940	24%	88%
	Nonresident	<u>135</u>	<u>112</u>	<u>247</u>	<u>0</u>	<u>7</u>	<u>7</u>	<u>135</u>	<u>119</u>	<u>254</u>		
	Total	516	1,581	2,097	0	97	97	516	1,678	2,194		
Doctoral	Resident	48	239	287	0	16	16	48	255	303	27%	62%
	Nonresident	<u>83</u>	<u>96</u>	<u>179</u>	<u>0</u>	<u>3</u>	<u>3</u>	<u>83</u>	<u>99</u>	<u>182</u>		
	Total	131	335	466	0	19	19	131	354	485		
Nondegree	Resident	8	54	62	0	25	25	8	79	87	13%	88%
	Nonresident	<u>5</u>	<u>6</u>	<u>11</u>	<u>0</u>	<u>1</u>	<u>1</u>	<u>5</u>	<u>7</u>	<u>12</u>		
	Total	13	60	73	0	26	26	13	86	99		
Total Graduate	Resident	437	1,762	2,199	0	131	131	437	1,893	2,330	24%	84%
	Nonresident	<u>223</u>	<u>214</u>	<u>437</u>	<u>0</u>	<u>11</u>	<u>11</u>	<u>223</u>	<u>225</u>	<u>448</u>		
	Total	660	1,976	2,636	0	142	142	660	2,118	2,778		
Grand Total	Resident	5,683	5,061	10,744	74	3,298	3,372	5,757	8,359	14,116	43%	91%
	Nonresident	<u>952</u>	<u>434</u>	<u>1,386</u>	<u>2</u>	<u>44</u>	<u>46</u>	<u>954</u>	<u>478</u>	<u>1,432</u>		
	Total	6,635	5,495	12,130	76	3,342	3,418	6,711	8,837	15,548		

Source: EMSAS Fall Enrollment file

IR&P/LCB 12/05

Table 5. Headcount Students by Gender and Ethnicity

Data - Classification	UMC		UMKC		UMR		UMSL		TOTAL	
	HC	%	HC	%	HC	%	HC	%	HC	%
A. Gender										
Men										
First-time DS Freshmen	2,183	46%	447	43%	714	81%	219	41%	3,563	50%
Other Undergraduate	8,125	49%	3,401	40%	2,653	77%	4,702	39%	18,881	47%
First Professional	526	49%	765	50%	0	-	68	41%	1,359	49%
Graduate	<u>2,309</u>	42%	<u>1,303</u>	40%	<u>1,010</u>	78%	<u>999</u>	36%	<u>5,621</u>	44%
Total	13,143	47%	5,916	41%	4,377	78%	5,988	39%	29,424	46%
Women										
First-time DS Freshmen	2,535	54%	592	57%	170	19%	312	59%	3,609	50%
Other Undergraduate	8,492	51%	5,047	60%	774	23%	7,373	61%	21,686	53%
First Professional	557	51%	758	50%	0	-	96	59%	1,411	51%
Graduate	<u>3,203</u>	58%	<u>1,993</u>	60%	<u>279</u>	22%	<u>1,779</u>	64%	<u>7,254</u>	56%
Total	14,787	53%	8,390	59%	1,223	22%	9,560	61%	33,960	54%
Grand Total	27,930		14,306		5,600		15,548		63,384	
B. Ethnicity *										
Am Indian/Alaskan Native										
First-time DS Freshmen	20	0%	9	1%	4	0%	1	0%	34	0%
Other Undergraduate	103	1%	50	1%	15	0%	36	0%	204	1%
First Professional	6	1%	15	1%	0	-	2	1%	23	1%
Graduate	<u>32</u>	1%	<u>25</u>	1%	<u>2</u>	0%	<u>3</u>	0%	<u>62</u>	1%
Total	161	1%	99	1%	21	0%	42	0%	323	1%
Asian/Pacific Islander										
First-time DS Freshmen	122	3%	91	9%	15	2%	30	6%	258	4%
Other Undergraduate	471	3%	382	5%	84	3%	337	3%	1,274	3%
First Professional	47	5%	195	14%	0	-	5	3%	247	10%
Graduate	<u>110</u>	2%	<u>82</u>	3%	<u>59</u>	5%	<u>80</u>	3%	<u>331</u>	3%
Total	750	3%	750	6%	158	3%	452	3%	2,110	4%
Black Non-Hispanic										
First-time DS Freshmen	328	7%	181	19%	32	4%	83	17%	624	9%
Other Undergraduate	930	6%	1,007	13%	160	5%	1,602	14%	3,699	10%
First Professional	43	4%	57	4%	0	-	6	4%	106	4%
Graduate	<u>199</u>	4%	<u>320</u>	11%	<u>45</u>	4%	<u>356</u>	14%	<u>920</u>	8%
Total	1,500	6%	1,565	12%	237	4%	2,047	14%	5,349	9%
Hispanic										
First-time DS Freshmen	96	2%	48	5%	19	2%	14	3%	177	3%
Other Undergraduate	278	2%	348	5%	81	2%	194	2%	901	2%
First Professional	13	1%	32	2%	0	-	2	1%	47	2%
Graduate	<u>97</u>	2%	<u>72</u>	2%	<u>26</u>	2%	<u>34</u>	1%	<u>229</u>	2%
Total	484	2%	500	4%	126	2%	244	2%	1,354	2%
White Non-Hispanic										
First-time DS Freshmen	3,986	87%	629	64%	777	90%	353	70%	5,745	83%
Other Undergraduate	14,050	87%	5,562	74%	2,844	87%	8,751	79%	31,207	82%
First Professional	927	89%	1,082	78%	0	-	132	87%	2,141	83%
Graduate	<u>3,724</u>	71%	<u>2,023</u>	68%	<u>620</u>	50%	<u>1,876</u>	73%	<u>8,243</u>	68%
Total	22,687	84%	9,296	72%	4,241	79%	11,112	77%	47,336	79%
Nonresident Alien										
First-time DS Freshmen	36	1%	19	2%	15	2%	21	4%	91	1%
Other Undergraduate	243	2%	208	3%	70	2%	194	2%	715	2%
First Professional	6	1%	13	1%	0	-	4	3%	23	1%
Graduate	<u>1,089</u>	21%	<u>464</u>	16%	<u>480</u>	39%	<u>224</u>	9%	<u>2,257</u>	19%
Total	1,374	5%	704	5%	565	11%	443	3%	3,086	5%
Grand Total	26,956		12,914		5,348		14,340		59,558	
* Note: Students not reporting ethnicity (Unknown) were removed from the distribution.										
Unknown										
First-time DS Freshmen	130		62		22		29		243	
Other Undergraduate	542		891		173		961		2,567	
First Professional	41		129		0		13		183	
Graduate	<u>261</u>		<u>310</u>		<u>57</u>		<u>205</u>		<u>833</u>	
Total	974		1,392		252		1,208		3,826	

Source: EMSAS Fall Enrollment file

IR&P/LCB 01/06