

**ENROLLMENT SUMMARY REPORT
FALL 2008**

Dr. La Shonda Carter-Boone
Senior Institutional Research Analyst

Office of Institutional Research & Planning
722 Lewis Hall
University of Missouri System

March 2009

IR&P 2009, Report 1

<http://www.umsystem.edu/ums/departments/fa/planning/>

FALL 2008 ENROLLMENT SUMMARY

Executive Summary

This report summarizes the status and trends in fall enrollment at the University of Missouri's four campuses. The report includes information about enrollment, full-time equivalence, new students on campus, undergraduate transfer students, full/part-time status, gender and ethnicity information.

Please note that enrollment totals in this report follow federal and state guidelines, which recommend that students who are classified as "exclusive auditors" are not included in enrollment figures. Consequently, students who are classified as "exclusive auditors" are not included in the campus totals. (Exclusive auditors are defined as students who are enrolled exclusively in courses that are not taken for credit.)

Highlights of the report include:

- The University of Missouri System enrolled a record 66,719 students in Fall 2008, 2,179 more students than the record 64,540 students that enrolled in Fall 2007. Total enrollment at the University has increased by 22% over the past 10 years (Table 1).
- In Fall 2008, the University of Missouri enrolled 49,510 undergraduate students (74% of total headcount), 2,873 first professional students (4%), and 14,336 graduate students (21%) (Table 1).
- Over the past 10 years, undergraduate headcount has increased by 19%, first-professional headcount by 7% and graduate headcount by 35% (Table 1).
- Since 2004, total student credit hours and total full-time equivalence have both increased by 10%. (Table 2.0).
- Over the past five years, total full-time resident headcount has increased 8% (table 4.0a) and total full-time non-resident headcount has increased 20% (table 4.0b).
- Women comprised 54% of total enrollment in Fall 2008. UM-St. Louis had the largest percentage of women (65%) and MO S&T had the highest proportion of men (78%) (Table 5).
- Of all the students of known ethnicity, under-represented minorities (American Indian/Alaskan Native, African-American, and Hispanic) represented 11% of the University of Missouri System's total enrollment (Table 5).

Technical Notes

These tables provide counts of students enrolled in the fall of 2008 on-schedule credit courses at the four campuses of the University of Missouri. Five and ten-year trend data are included in the tables for comparison purposes. The data used in this report were generated from the EMSAS Fall Enrollment files, which are submitted to the Missouri Department of Higher Education (MDHE) each fall. Data included in EMSAS files were prepared in the admissions and registration offices at the respective campuses. The data are counts as of the census date at each campus, which is defined as the end of the fourth week of classes for the fall session. The source data are based on the reporting guidelines and definitions of the Missouri Department of Higher Education (MDHE) and the National Center for Educational Statistics (NCES).

Tables in the Table 2 series (2.0-2.4) include counts of on- and off-campus students. The columns titled "On-Campus", according to the MDHE guidelines, include students enrolled geographically on campus and students in the Graduate Engineering (Residence) Centers. All other students are counted in the columns headed "Off-Campus", which include students enrolled in extension courses and students that receive H.S. advanced credit from the Kansas City and St. Louis campuses. The tables of the Table 2 series also include full-time equivalence (FTE) counts.

Tables in the Table 4 series (4.0a-4.4b) include counts of resident and non-resident students by level and course load (full-time vs. part-time).

Definitions of FTE:

Undergraduate FTE = Total Student Credit Hours/15

Graduate FTE = Total Student Credit Hours/12

Dentistry FTE = Headcount

Law FTE = Total Student Credit Hours/15

UMC Medicine FTE = Headcount

UMKC Medicine FTE = Headcount

Optometry FTE = Headcount

Pharmacy FTE = Headcount

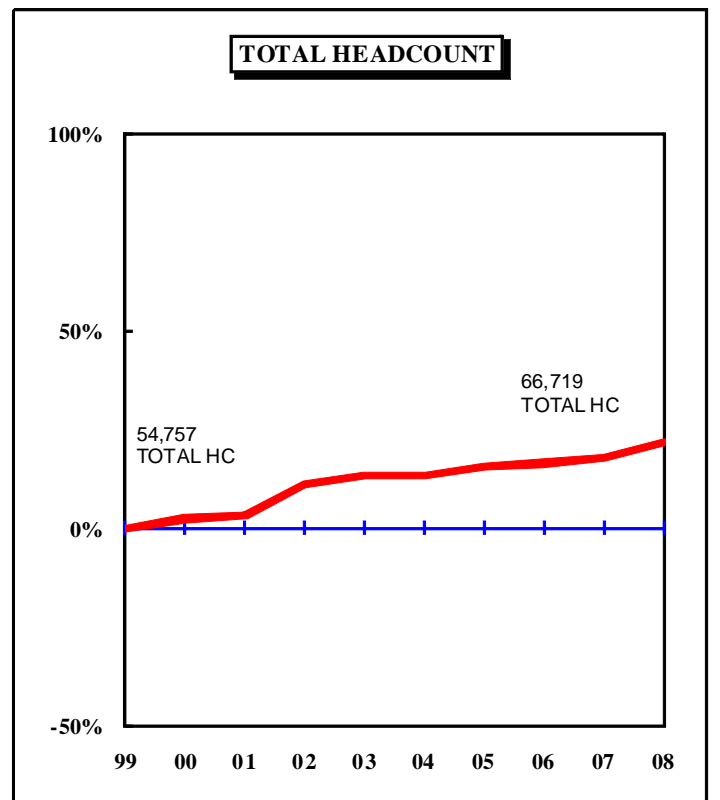
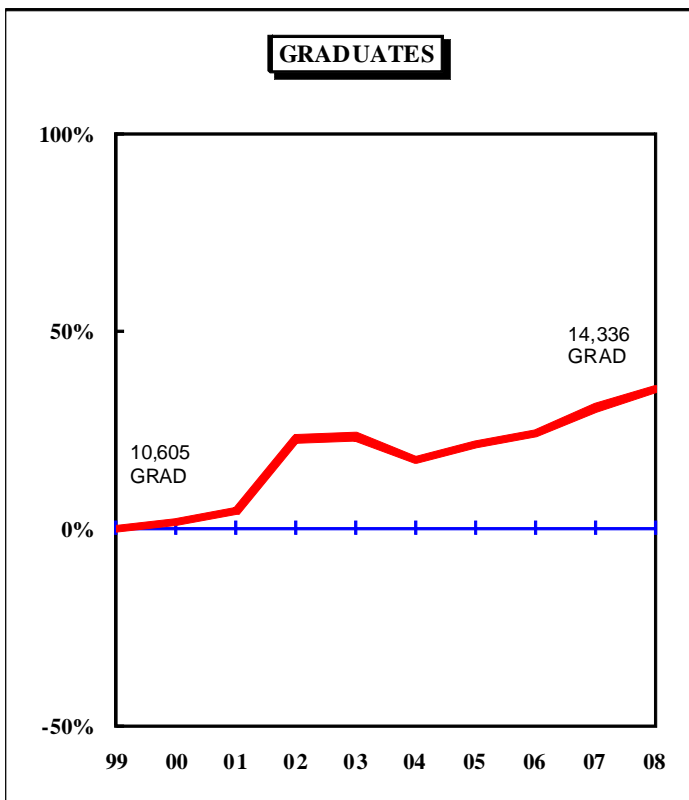
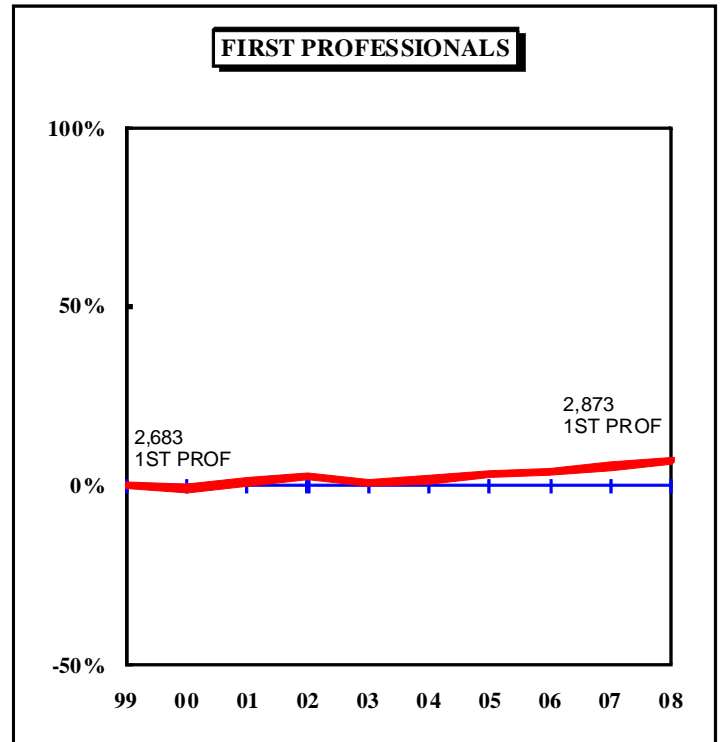
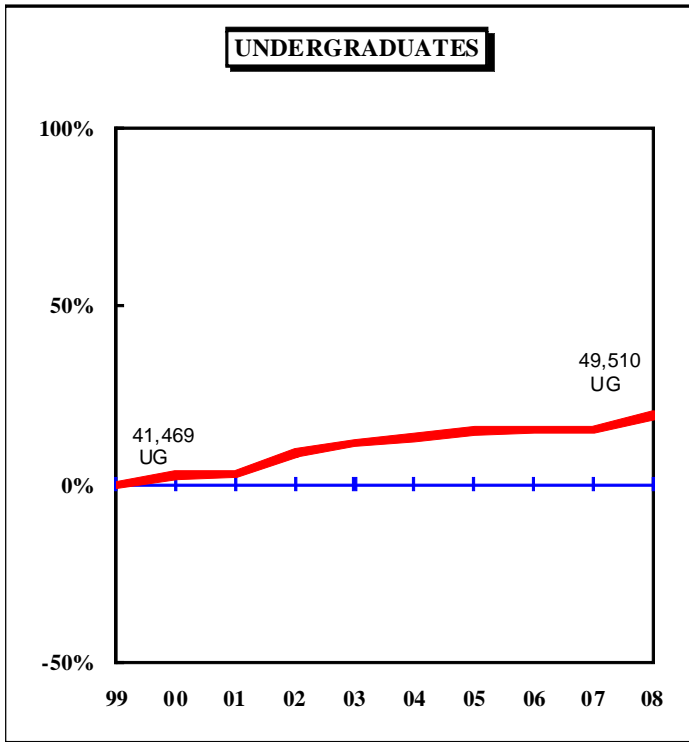
Vet Medicine FTE = Headcount

Caveats

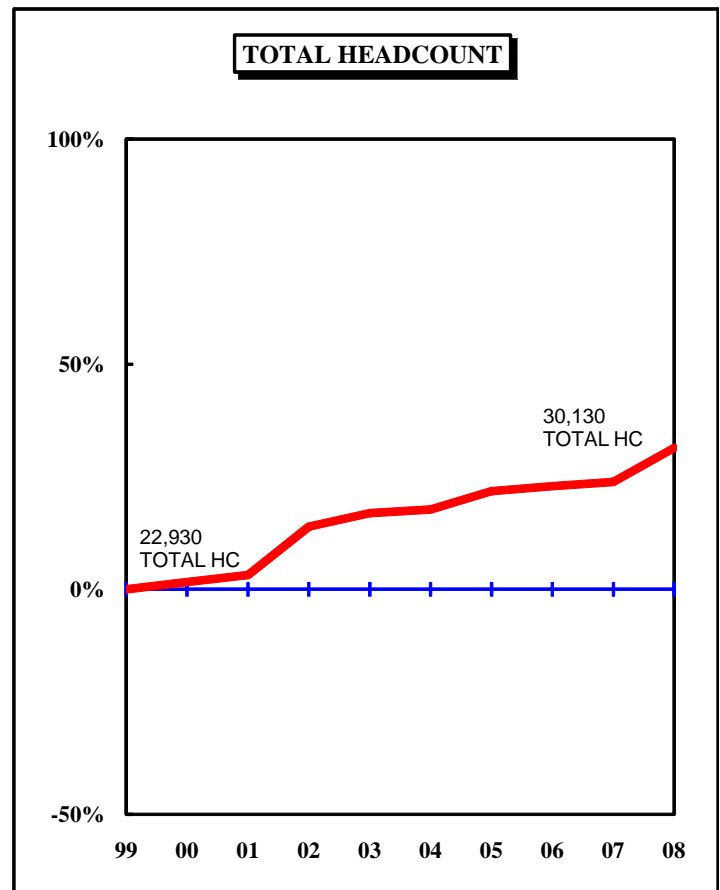
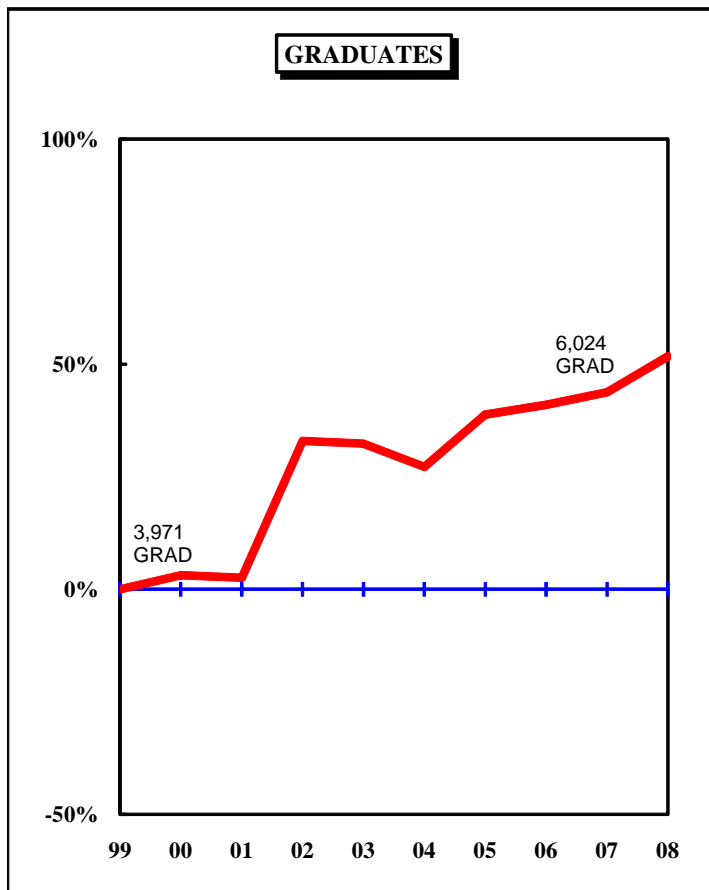
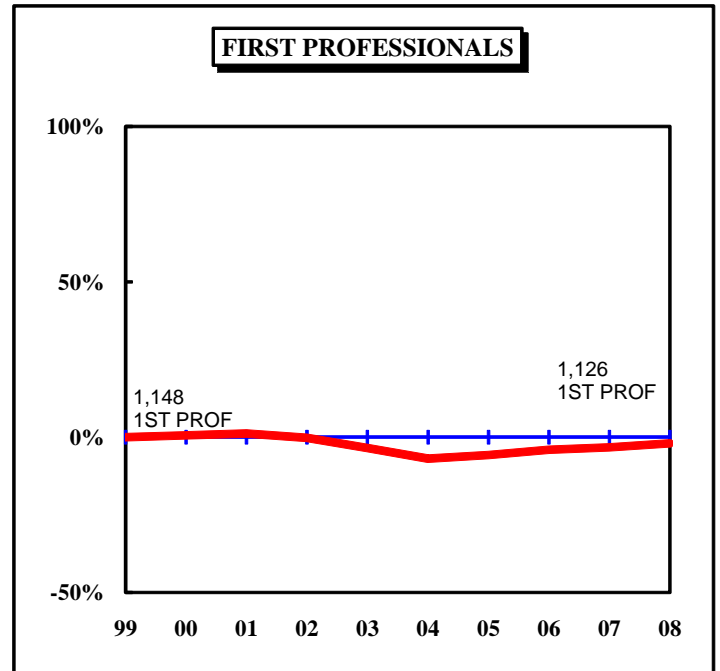
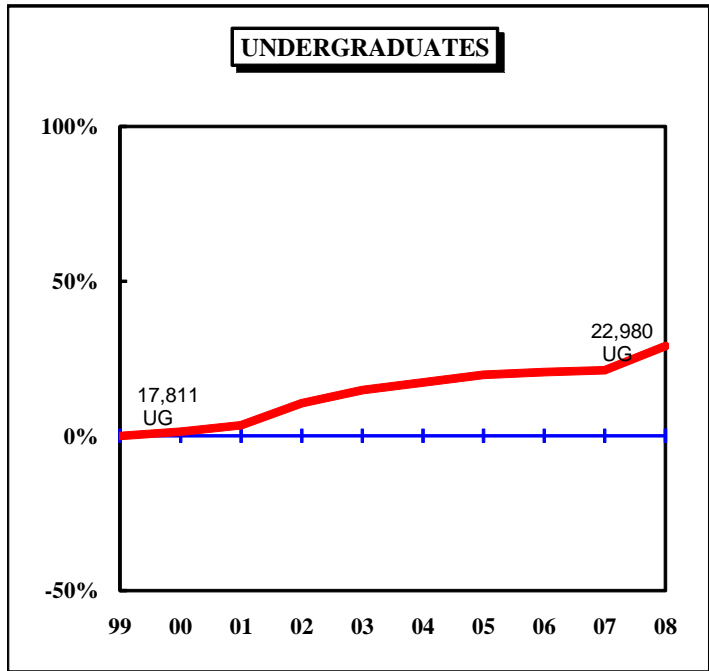
First- and second-year students in the Medicine MD program at UMKC are included in the undergraduate counts of the Table 2 and Table 4 series.

Enrollment counts for students in "Off-Schedule" courses, which include intersession courses, short courses, Video Credit courses, and other courses which begin and end on dates other than those for the regular academic semester, are accumulated during the term in which the courses began and are reported the semester following their end date.

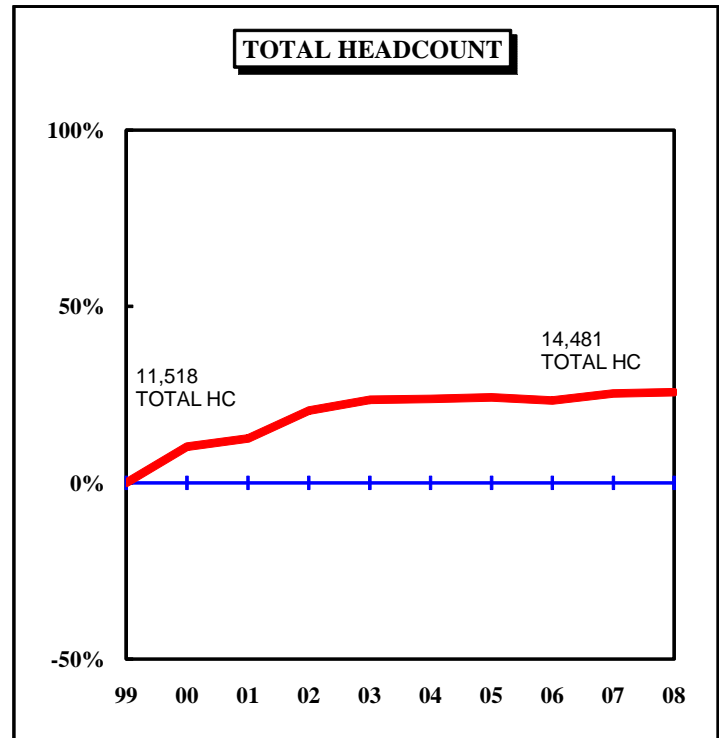
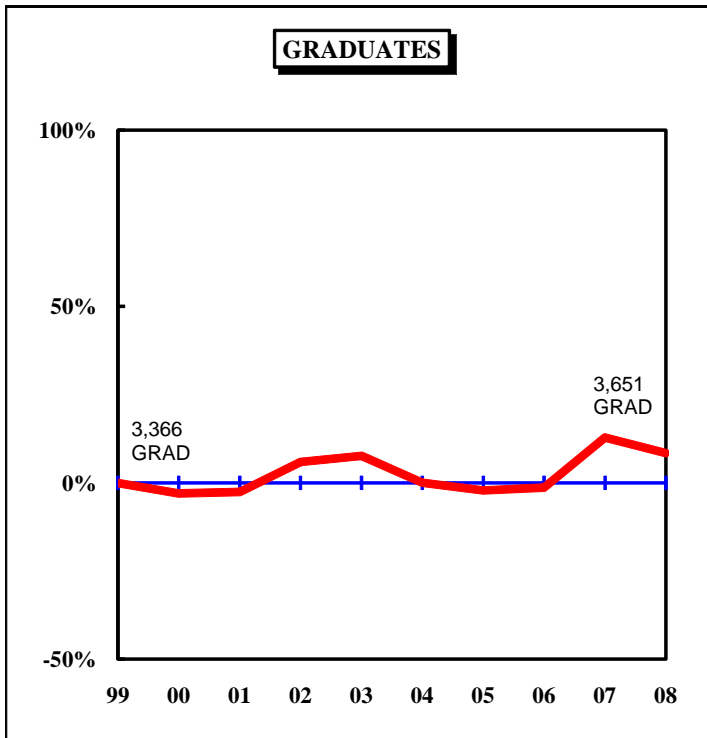
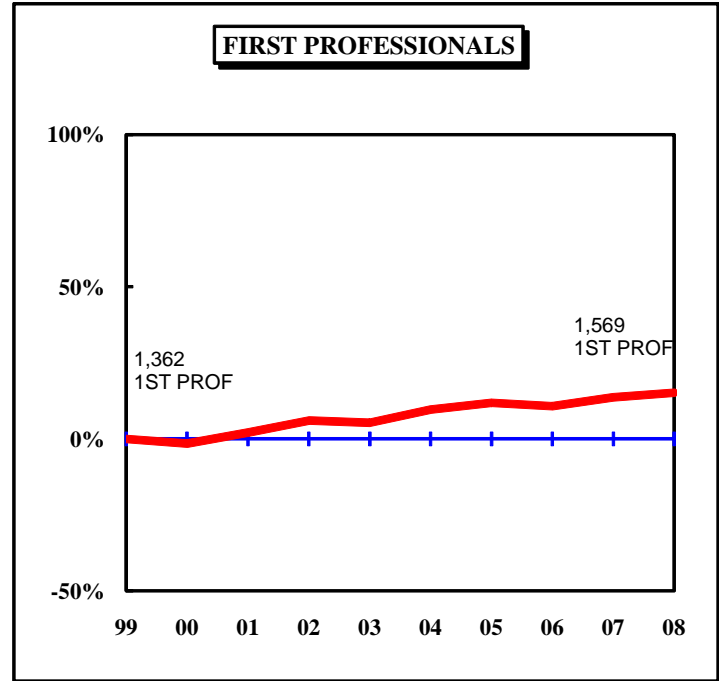
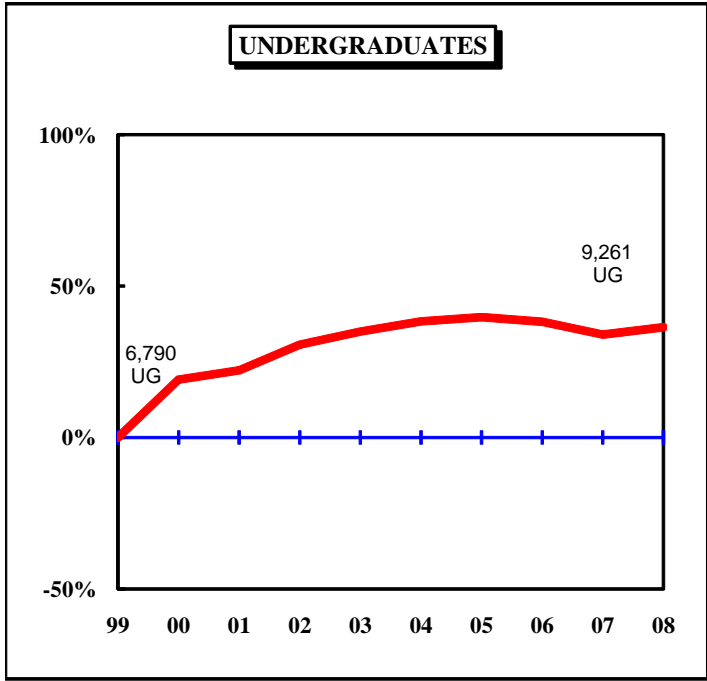
**Figure 1.0: Rate of Change in Fall Headcount by Student Level and Campus,
Fall 1999 to Fall 2008
UNIVERSITY OF MISSOURI SYSTEM**



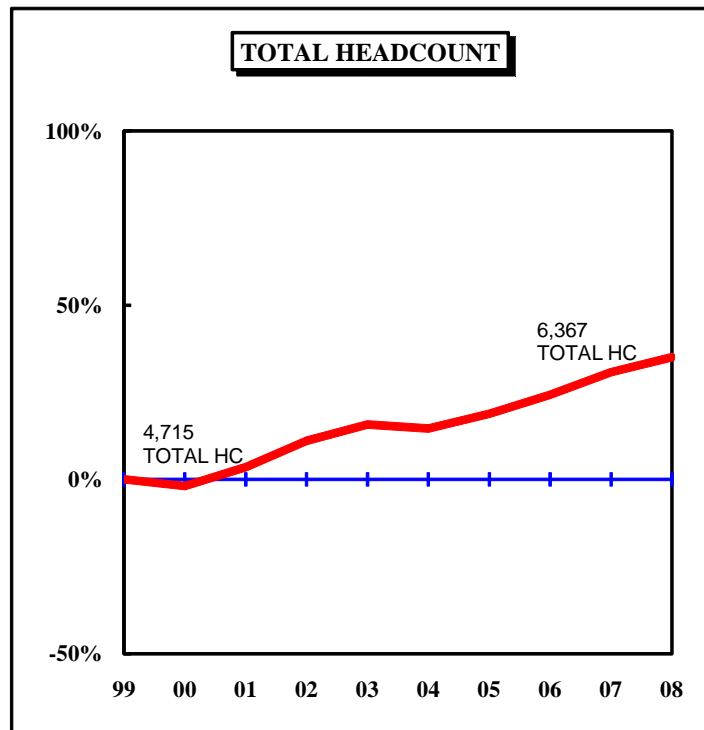
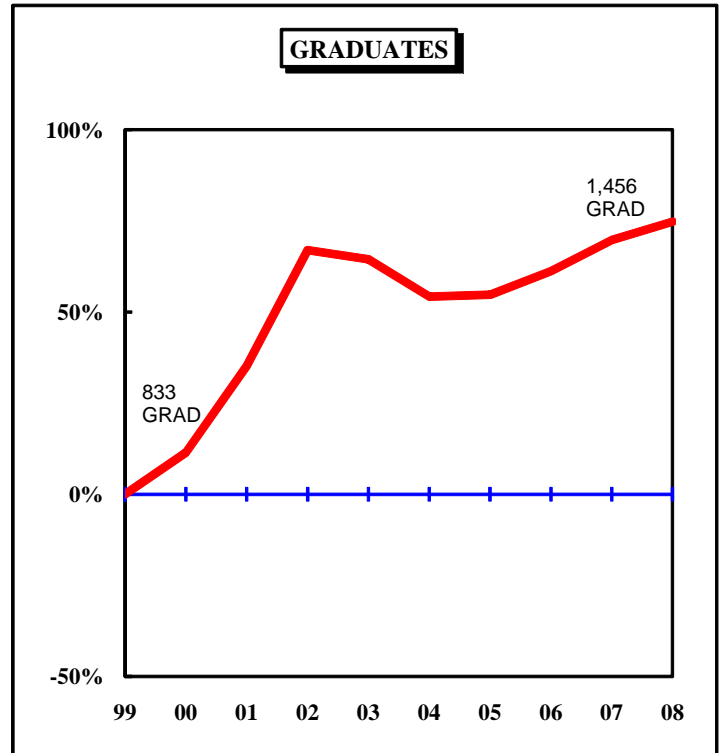
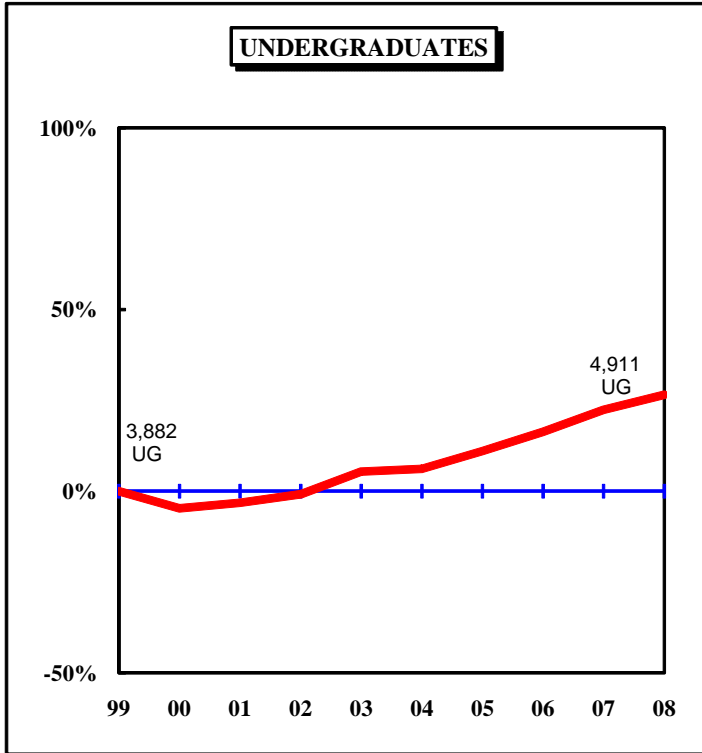
**Figure 1.1: Rate of Change in Fall Headcount by Student Level and Campus,
Fall 1999 to Fall 2008
UNIVERSITY OF MISSOURI-COLUMBIA**



**Figure 1.2: Rate of Change in Fall Headcount by Student Level and Campus,
Fall 1999 to Fall 2008
UNIVERSITY OF MISSOURI-KANSAS CITY**



**Figure 1.3: Rate of Change in Fall Headcount by Student Level and Campus,
Fall 1999 to Fall 2008
MISSOURI S&T**



**Figure 1.4: Rate of Change in Fall Headcount by Student Level and Campus,
Fall 1999 to Fall 2008**

UNIVERSITY OF MISSOURI-ST. LOUIS

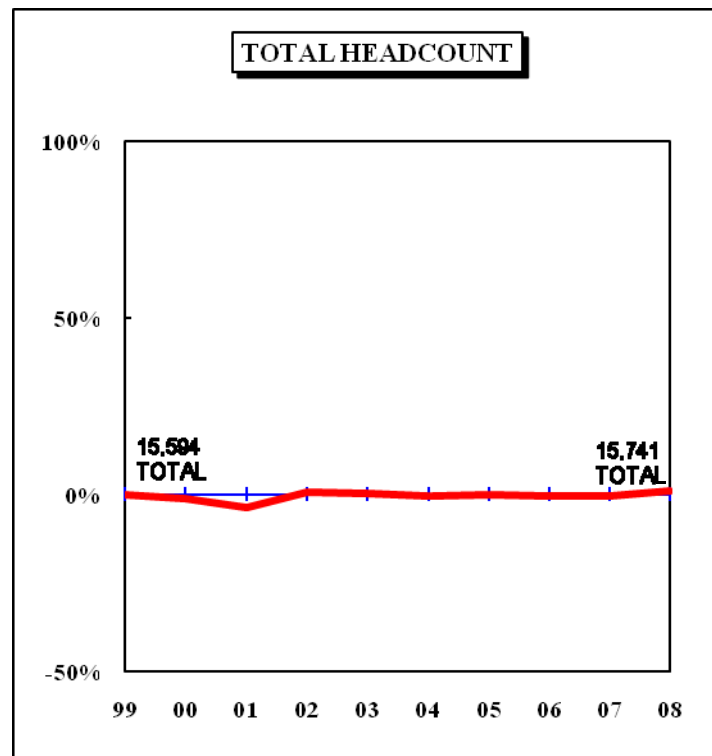
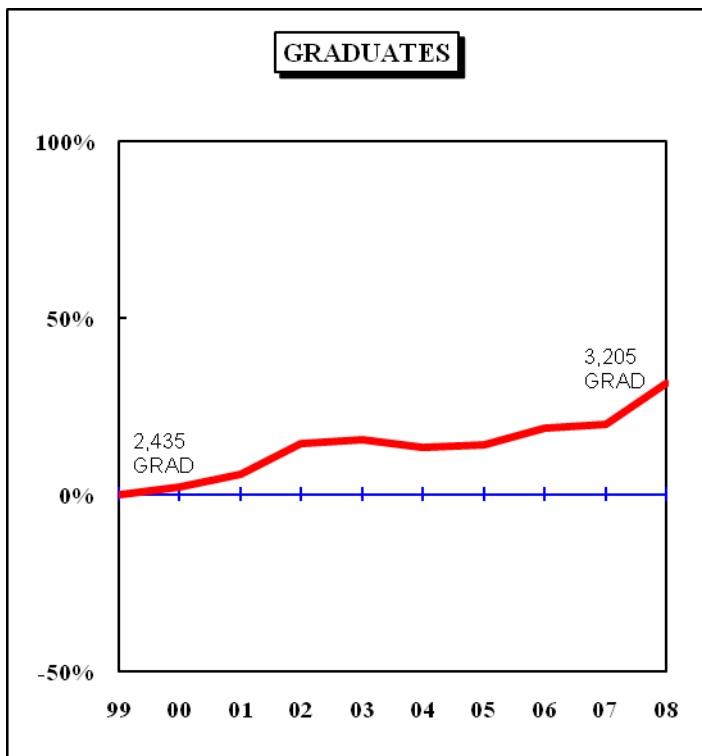
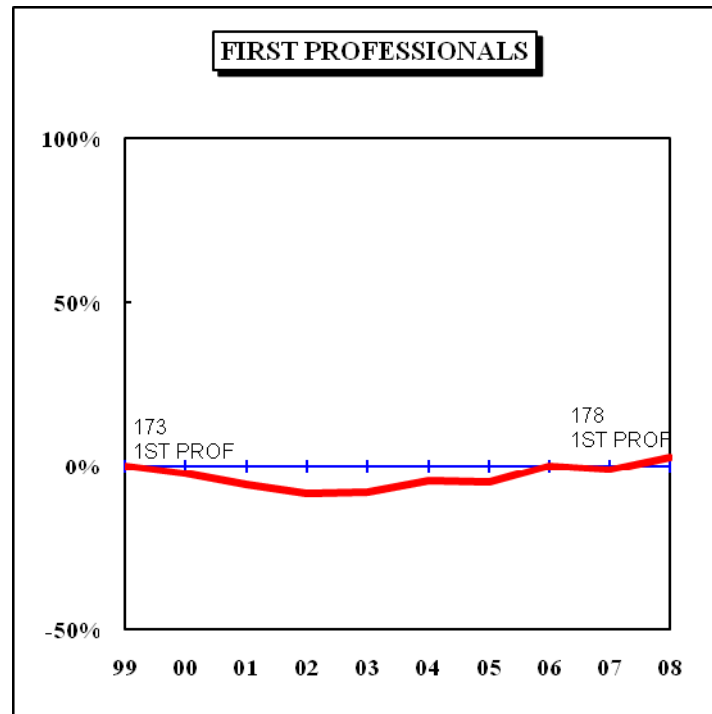
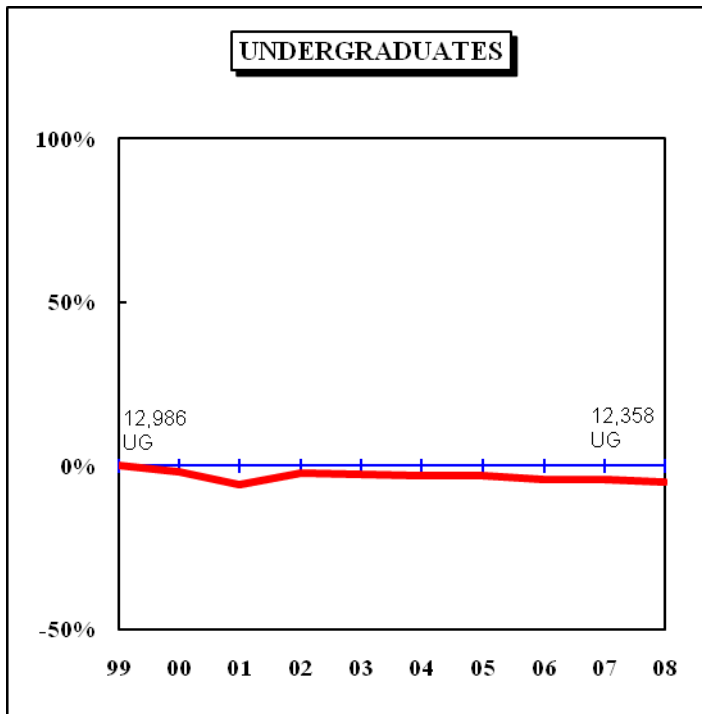
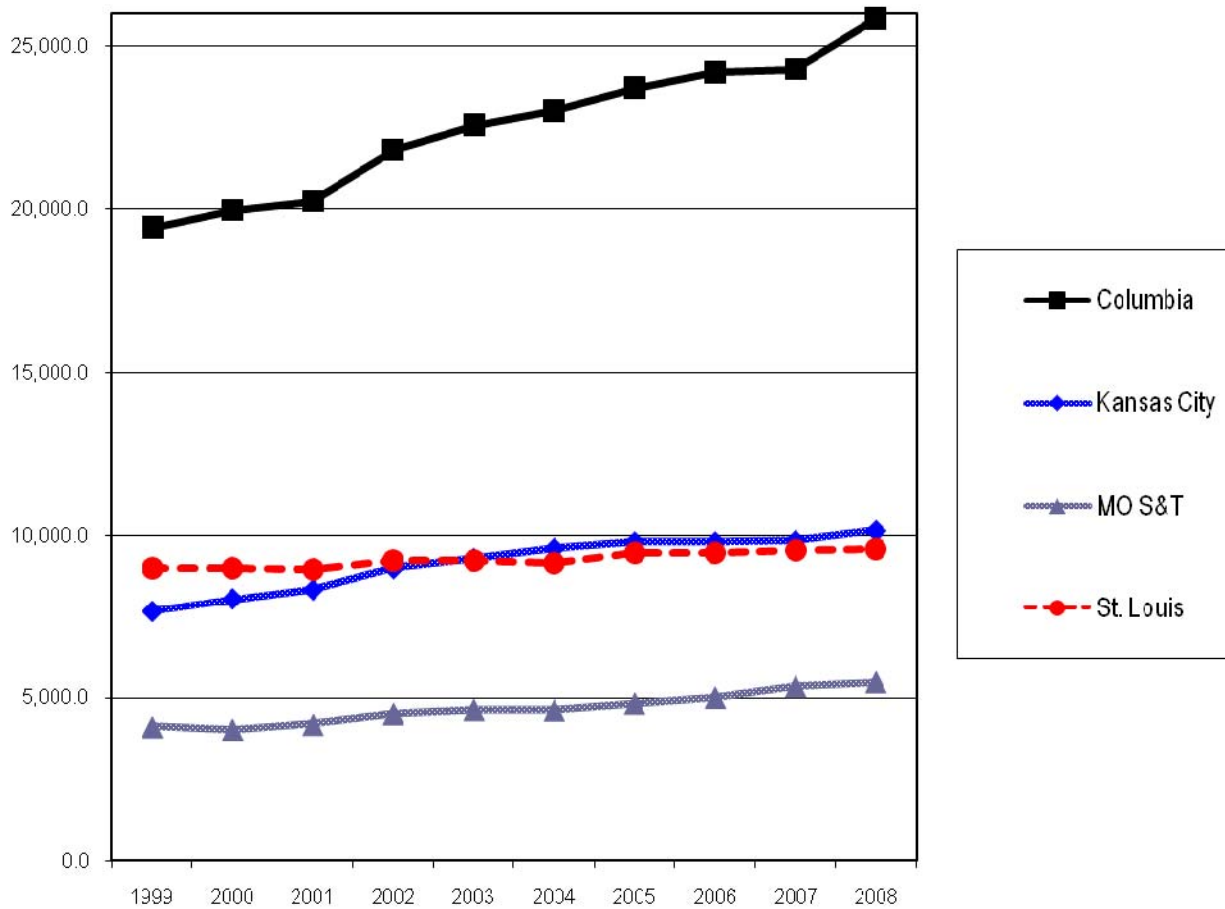


Table 1. Headcount History by Student Level and Campus, Fall 1999 to Fall 2008

Campus	Level	1999	2000	2001	2002	2003	2004	2005	2006	2007	2008	10 yr. Change
Columbia	Undergraduate	17,811	18,058	18,431	19,698	20,441	20,883	21,335	21,484	21,586	22,980	29%
	Professional	1,148	1,155	1,162	1,146	1,109	1,069	1,083	1,102	1,111	1,126	-2%
	Graduate	3,971	4,096	4,074	5,280	5,255	5,051	5,512	5,598	5,708	6,024	52%
	Total	22,930	23,309	23,667	26,124	26,805	27,003	27,930	28,184	28,405	30,130	31%
Kansas City	Undergraduate	6,790	8,091	8,299	8,870	9,167	9,393	9,487	9,383	9,094	9,261	36%
	Professional	1,362	1,341	1,390	1,444	1,435	1,494	1,523	1,509	1,548	1,569	15%
	Graduate	3,366	3,266	3,280	3,567	3,624	3,369	3,296	3,321	3,800	3,651	8%
	Total	11,518	12,698	12,969	13,881	14,226	14,256	14,306	14,213	14,442	14,481	26%
MO S&T	Undergraduate	3,882	3,698	3,756	3,849	4,089	4,119	4,311	4,515	4,752	4,911	27%
	Graduate	833	928	1,127	1,391	1,370	1,285	1,289	1,343	1,414	1,456	75%
	Total	4,715	4,626	4,883	5,240	5,459	5,404	5,600	5,858	6,166	6,367	35%
St. Louis	Undergraduate	12,986	12,737	12,251	12,715	12,624	12,572	12,606	12,459	12,432	12,358	-5%
	Professional	173	169	163	158	159	165	164	173	171	178	3%
	Graduate	2,435	2,491	2,579	2,785	2,816	2,761	2,778	2,896	2,924	3,205	32%
	Total	15,594	15,397	14,993	15,658	15,599	15,498	15,548	15,528	15,527	15,741	1%
System	Undergraduate	41,469	42,584	42,737	45,132	46,321	46,967	47,739	47,841	47,864	49,510	19%
	Professional	2,683	2,665	2,715	2,748	2,703	2,728	2,770	2,784	2,830	2,873	7%
	Graduate	10,605	10,781	11,060	13,023	13,065	12,466	12,875	13,158	13,846	14,336	35%
	Grand Total	54,757	56,030	56,512	60,903	62,089	62,161	63,384	63,783	64,540	66,719	22%

Figure 2. Full-time Equivalence History by Campus, 1999 to 2008



Source: EMSAS Fall Enrollment file
IR&P/LCB 03/09

Full-time Equivalent History by Campus, 1999 to 2008

Campus	1999	2000	2001	2002	2003	2004	2005	2006	2007	2008
Columbia	19,412.0	19,950.0	20,231.0	21,804.0	22,556.0	23,000.0	23,703.6	24,182.7	24,280.4	25,840.2
Kansas City	7,656.0	8,049.0	8,334.0	9,001.0	9,290.0	9,607.7	9,795.3	9,797.9	9,843.8	10,152.4
MO S&T	4,070.0	3,997.0	4,148.0	4,481.0	4,604.0	4,594.1	4,799.9	4,982.6	5,323.0	5,452.9
St. Louis	8,994.0	8,986.0	8,958.0	9,214.0	9,224.0	9,162.0	9,451.9	9,467.5	9,546.9	9,578.5
Total	40,132.0	40,982.0	41,671.0	44,500.0	45,674.0	46,363.8	47,750.7	48,430.7	48,994.0	51,023.9

(Totals may not add due to rounding.)

Table 2.0 Headcounts, Full-time Equivalence, and Student Credit Hours by Location, Fall 2004 to Fall 2008

University of Missouri System

	<u>On-Campus</u>					<u>Off-Campus</u>					<u>Total</u>					5-yr. Change
	FS04	FS05	FS06	FS07	FS08	FS04	FS05	FS06	FS07	FS08	FS04	FS05	FS06	FS07	FS08	
Headcount by Student Level																
Undergraduate																
Fresh & Soph DS	17,136	17,577	17,570	17,898	19,280	11	19	15	30	28	17,147	17,596	17,585	17,928	19,308	13%
Junior & Senior DS	22,993	23,702	23,876	23,862	23,990	116	153	147	222	254	23,109	23,855	24,023	24,084	24,244	5%
Nondegree	<u>764</u>	<u>763</u>	<u>784</u>	<u>737</u>	<u>861</u>	<u>5,947</u>	<u>5,525</u>	<u>5,449</u>	<u>5,115</u>	<u>5,097</u>	<u>6,711</u>	<u>6,288</u>	<u>6,233</u>	<u>5,852</u>	<u>5,958</u>	-11%
Total Undergraduate	40,893	42,042	42,230	42,497	44,131	6,074	5,697	5,611	5,367	5,379	46,967	47,739	47,841	47,864	49,510	5%
First Professional																
Dentistry (DDS)	381	388	393	401	399	0	0	0	0	0	381	388	393	401	399	5%
Law (JD)	974	972	971	956	945	0	0	0	0	0	974	972	971	956	945	-3%
Medicine (MD)	726	736	738	759	767	0	0	0	0	0	726	736	738	759	767	6%
Optometry (OD)	165	164	173	171	178	0	0	0	0	0	165	164	173	171	178	8%
Pharmacy (DPharm)	225	243	238	238	298	0	0	0	27	0	225	243	238	265	298	32%
Vet. Med. (DVM)	<u>257</u>	<u>267</u>	<u>271</u>	<u>278</u>	<u>286</u>	<u>0</u>	<u>0</u>	<u>0</u>	<u>0</u>	<u>0</u>	<u>257</u>	<u>267</u>	<u>271</u>	<u>278</u>	<u>286</u>	11%
Total First Professional	2,728	2,770	2,784	2,803	2,873	0	0	0	27	0	2,728	2,770	2,784	2,830	2,873	5%
Graduate																
Masters & Ed. Spec.	7,293	7,350	7,456	7,544	7,629	1,045	1,202	1,321	1,571	1,802	8,338	8,552	8,777	9,115	9,431	13%
Doctoral	3,216	3,356	3,376	3,414	3,526	110	113	112	101	120	3,326	3,469	3,488	3,515	3,646	10%
Nondegree	<u>487</u>	<u>446</u>	<u>430</u>	<u>841</u>	<u>699</u>	<u>315</u>	<u>408</u>	<u>463</u>	<u>375</u>	<u>560</u>	<u>802</u>	<u>854</u>	<u>893</u>	<u>1,216</u>	<u>1,259</u>	57%
Total Graduate	10,996	11,152	11,262	11,799	11,854	1,470	1,723	1,896	2,047	2,482	12,466	12,875	13,158	13,846	14,336	15%
Grand Total																
Headcount	54,617	55,964	56,276	57,099	58,858	7,544	7,420	7,507	7,441	7,861	62,161	63,384	63,783	64,540	66,719	7%
FTE Enrollments by Student Level																
Undergraduate	34,982	36,123	36,575.6	36,849.3	38,546.8	1,902	1,804	1,804.9	1,792.4	1,747.1	36,884	37,926	38,381	38,642	40,294	9%
First Professional	2,681	2,730	2,751.4	2,772.6	2,840.9	0	0	0.0	27.0	0.0	2,681	2,730	2,751	2,800	2,841	6%
Graduate	<u>6,203</u>	<u>6,400</u>	<u>6,573.4</u>	<u>6,721.2</u>	<u>6,875.1</u>	<u>595</u>	<u>694</u>	<u>725.4</u>	<u>831.6</u>	<u>1,014.0</u>	<u>6,798</u>	<u>7,095</u>	<u>7,299</u>	<u>7,553</u>	<u>7,889</u>	16%
Total FTE	43,866	45,253	45,900.4	46,343.1	48,262.8	2,497	2,498	2,530.3	2,651.0	2,761.1	46,363.0	47,750.7	48,430.7	48,994.1	51,023.9	10%
SCH Produced by Student Level																
Undergraduate	524,735	541,837	548,634	552,740	578,202	28,529	27,055	27,074	26,885	26,207	553,264	568,892	575,708	579,625	604,409	9%
First Professional	45,920	47,502	48,162	47,791	48,067	0	0	0	353	0	45,920	47,502	48,162	48,144	48,067	5%
Graduate	<u>74,436</u>	<u>76,804</u>	<u>78,881</u>	<u>80,655</u>	<u>82,499</u>	<u>7,147</u>	<u>8,331</u>	<u>8,704</u>	<u>9,978</u>	<u>12,168</u>	<u>81,583</u>	<u>85,135</u>	<u>87,585</u>	<u>90,633</u>	<u>94,667</u>	16%
Total SCH	645,091	666,143	675,677	681,186	708,767	35,676	35,386	35,778	37,216	38,375	680,767	701,529	711,455	718,402	747,142	10%

Source: EMSAS Fall Enrollment file

Table 2.1 Headcounts, Full-time Equivalence, and Student Credit Hours by Location, Fall 2004 to Fall 2008

	<u>On-Campus</u>					<u>Off-Campus</u>					<u>Total</u>					5-yr. Change
	FS04	FS05	FS06	FS07	FS08	FS04	FS05	FS06	FS07	FS08	FS04	FS05	FS06	FS07	FS08	
Headcount by Student Level																
Undergraduate																
Fresh & Soph DS	10,520	10,633	10,501	10,609	11,631	7	9	10	14	22	10,527	10,642	10,511	10,623	11,653	11%
Junior & Senior DS	9,929	10,268	10,588	10,637	10,827	85	108	105	126	168	10,014	10,376	10,693	10,763	10,995	10%
Nondegree	<u>192</u>	<u>225</u>	<u>209</u>	<u>180</u>	<u>229</u>	<u>150</u>	<u>92</u>	<u>71</u>	<u>20</u>	<u>103</u>	<u>342</u>	<u>317</u>	<u>280</u>	<u>200</u>	<u>332</u>	-3%
Total Undergraduate	20,641	21,126	21,298	21,426	22,687	242	209	186	160	293	20,883	21,335	21,484	21,586	22,980	10%
First Professional																
Law (JD)	439	444	456	458	453	0	0	0	0	0	439	444	456	458	453	3%
Medicine (MD)	373	372	375	375	387	0	0	0	0	0	373	372	375	375	387	4%
Vet. Med. (DVM)	<u>257</u>	<u>267</u>	<u>271</u>	<u>278</u>	<u>286</u>	<u>0</u>	<u>0</u>	<u>0</u>	<u>0</u>	<u>0</u>	<u>257</u>	<u>267</u>	<u>271</u>	<u>278</u>	<u>286</u>	11%
Total First Professional	1,069	1,083	1,102	1,111	1,126	0	0	0	0	0	1,069	1,083	1,102	1,111	1,126	5%
Graduate																
Masters & Ed. Spec.	2,117	2,196	2,160	2,192	2,261	584	695	800	914	962	2,701	2,891	2,960	3,106	3,223	19%
Doctoral	1,848	1,990	2,019	2,029	2,051	95	82	82	78	81	1,943	2,072	2,101	2,107	2,132	10%
Nondegree	<u>201</u>	<u>223</u>	<u>185</u>	<u>215</u>	<u>250</u>	<u>206</u>	<u>326</u>	<u>352</u>	<u>280</u>	<u>419</u>	<u>407</u>	<u>549</u>	<u>537</u>	<u>495</u>	<u>669</u>	64%
Total Graduate	4,166	4,409	4,364	4,436	4,562	885	1,103	1,234	1,272	1,462	5,051	5,512	5,598	5,708	6,024	19%
Grand Total																
Headcount	25,876	26,618	26,764	26,973	28,375	1,127	1,312	1,420	1,432	1,755	27,003	27,930	28,184	28,405	30,130	12%
FTE Enrollments by Student Level																
Undergraduate	18,905	19,372.1	19,712.3	19,785.3	21,097.0	74	67.7	68.3	61.3	99.7	18,979	19,440	19,781	19,847	21,197	12%
First Professional	1,048	1,066.2	1,083.4	1,093.8	1,108.2	0	0.0	0.0	0.0	0.0	1,048	1,066	1,083	1,094	1,108	6%
Graduate	<u>2,625</u>	<u>2,770.1</u>	<u>2,820.9</u>	<u>2,815.4</u>	<u>2,951.1</u>	<u>348</u>	<u>427.5</u>	<u>497.8</u>	<u>524.6</u>	<u>584.3</u>	<u>2,973</u>	<u>3,198</u>	<u>3,319</u>	<u>3,340</u>	<u>3,535</u>	19%
Total FTE	22,578	23,208.4	23,616.6	23,694.5	25,156.3	422	495.2	566.1	585.9	683.9	23,000.0	23,703.6	24,182.7	24,280.4	25,840.2	12%
SCH Produced by Student Level																
Undergraduate	283,579	290,581	295,684	296,780	316,455	1,111	1,016	1,025	919	1,495	284,690	291,597	296,709	297,699	317,950	12%
First Professional	16,131	17,050	17,792	17,256	16,596	0	0	0	0	0	16,131	17,050	17,792	17,256	16,596	3%
Graduate	<u>31,496</u>	<u>33,241</u>	<u>33,851</u>	<u>33,785</u>	<u>35,413</u>	<u>4,177</u>	<u>5,130</u>	<u>5,973</u>	<u>6,295</u>	<u>7,011</u>	<u>35,673</u>	<u>38,371</u>	<u>39,824</u>	<u>40,080</u>	<u>42,424</u>	19%
Total SCH	331,206	340,872	347,327	347,821	368,463	5,288	6,146	6,998	7,214	8,506	336,494	347,018	354,325	355,035	376,969	12%

Source: EMSAS Fall Enrollment file

Table 2.2 Headcounts, Full-time Equivalence, and Student Credit Hours by Location, Fall 2004 to Fall 2008

	<u>On-Campus</u>					<u>Off-Campus</u>					<u>Total</u>					5-yr. Change
	FS04	FS05	FS06	FS07	FS08	FS04	FS05	FS06	FS07	FS08	FS04	FS05	FS06	FS07	FS08	
Headcount by Student Level																
Undergraduate																
Fresh & Soph DS	2,612	2,865	2,880	3,029	3,017	1	0	0	13	0	2,613	2,865	2,880	3,042	3,017	15%
Junior & Senior DS	4,180	4,200	4,187	3,890	4,330	0	0	0	43	4	4,180	4,200	4,187	3,933	4,334	4%
Nondegree	<u>305</u>	<u>273</u>	<u>284</u>	<u>255</u>	<u>307</u>	<u>2,295</u>	<u>2,149</u>	<u>2,032</u>	<u>1,864</u>	<u>1,603</u>	<u>2,600</u>	<u>2,422</u>	<u>2,316</u>	<u>2,119</u>	<u>1,910</u>	-27%
Total Undergraduate	7,097	7,338	7,351	7,174	7,654	2,296	2,149	2,032	1,920	1,607	9,393	9,487	9,383	9,094	9,261	-1%
First Professional																
Dentistry (DDS)	381	388	393	401	399	0	0	0	0	0	381	388	393	401	399	5%
Law (JD)	535	528	515	498	492	0	0	0	0	0	535	528	515	498	492	-8%
Medicine (MD)	353	364	363	384	380	0	0	0	0	0	353	364	363	384	380	8%
Pharmacy (DPharm)	<u>225</u>	<u>243</u>	<u>238</u>	<u>238</u>	<u>298</u>	<u>0</u>	<u>0</u>	<u>0</u>	<u>27</u>	<u>0</u>	<u>225</u>	<u>243</u>	<u>238</u>	<u>265</u>	<u>298</u>	32%
Total First Professional	1,494	1,523	1,509	1,521	1,569	0	0	0	27	0	1,494	1,523	1,509	1,548	1,569	5%
Graduate																
Masters & Ed. Spec.	2,622	2,570	2,571	2,623	2,670	0	0	1	54	53	2,622	2,570	2,572	2,677	2,723	4%
Doctoral	546	543	522	536	624	0	0	0	0	7	546	543	522	536	631	16%
Nondegree	<u>181</u>	<u>142</u>	<u>143</u>	<u>505</u>	<u>297</u>	<u>20</u>	<u>41</u>	<u>84</u>	<u>82</u>	<u>0</u>	<u>201</u>	<u>183</u>	<u>227</u>	<u>587</u>	<u>297</u>	48%
Total Graduate	3,349	3,255	3,236	3,664	3,591	20	41	85	136	60	3,369	3,296	3,321	3,800	3,651	8%
Grand Total																
Headcount	11,940	12,116	12,096	12,359	12,814	2,316	2,190	2,117	2,083	1,667	14,256	14,306	14,213	14,442	14,481	2%
FTE Enrollments by Student Level																
Undergraduate	5,779	6,012.1	6,032.3	5,887.2	6,272.8	575	527.7	495.3	512.7	389.3	6,354	6,540	6,528	6,400	6,662	5%
First Professional	1,468	1,499.8	1,495.0	1,507.8	1,554.7	0	0.0	0.0	27.0	0.0	1,468	1,500	1,495	1,535	1,555	6%
Graduate	<u>1,781</u>	<u>1,746.7</u>	<u>1,760.3</u>	<u>1,873.8</u>	<u>1,902.4</u>	<u>4</u>	<u>9.0</u>	<u>14.9</u>	<u>35.3</u>	<u>33.3</u>	<u>1,785</u>	<u>1,756</u>	<u>1,775</u>	<u>1,909</u>	<u>1,936</u>	8%
Total FTE	9,028	9,258.6	9,287.6	9,268.8	9,729.9	579	536.7	510.2	575.0	422.5	9,607.0	9,795.3	9,797.8	9,843.8	10,152.4	6%
SCH Produced by Student Level																
Undergraduate	86,690	90,181	90,485	88,308	94,092	8,626	7,916	7,430	7,691	5,839	95,316	98,097	97,915	95,999	99,931	5%
First Professional	26,458	27,113	26,941	27,029	27,906	0	0	0	353	0	26,458	27,113	26,941	27,382	27,906	5%
Graduate	<u>21,370</u>	<u>20,961</u>	<u>21,124</u>	<u>22,486</u>	<u>22,829</u>	<u>53</u>	<u>108</u>	<u>179</u>	<u>423</u>	<u>399</u>	<u>21,423</u>	<u>21,069</u>	<u>21,303</u>	<u>22,909</u>	<u>23,228</u>	8%
Total SCH	134,518	138,255	138,550	137,823	144,827	8,679	8,024	7,609	8,467	6,238	143,197	146,279	146,159	146,290	151,065	5%

Source: EMSAS Fall Enrollment file

Table 2.3 Headcounts, Full-time Equivalence, and Student Credit Hours by Location, Fall 2004 to Fall 2008

	<u>On-Campus</u>					<u>Off-Campus</u>					<u>Total</u>					5-yr. Change
	FS04	FS05	FS06	FS07	FS08	FS04	FS05	FS06	FS07	FS08	FS04	FS05	FS06	FS07	FS08	
Headcount by Student Level																
Undergraduate																
Fresh & Soph DS	1,896	1,915	1,993	2,127	2,180	0	0	0	0	0	1,896	1,915	1,993	2,127	2,180	15%
Junior & Senior DS	2,122	2,304	2,472	2,578	2,693	0	0	0	0	2	2,122	2,304	2,472	2,578	2,695	27%
Nondegree	<u>49</u>	<u>29</u>	<u>34</u>	<u>35</u>	<u>24</u>	<u>52</u>	<u>63</u>	<u>16</u>	<u>12</u>	<u>12</u>	<u>101</u>	<u>92</u>	<u>50</u>	<u>47</u>	<u>36</u>	-64%
Total Undergraduate	4,067	4,248	4,499	4,740	4,897	52	63	16	12	14	4,119	4,311	4,515	4,752	4,911	19%
Graduate																
Masters & Ed. Spec.	479	487	540	557	523	363	410	434	502	547	842	897	974	1,059	1,070	27%
Doctoral	370	357	338	331	345	7	12	12	13	19	377	369	350	344	364	-3%
Nondegree	<u>18</u>	<u>8</u>	<u>12</u>	<u>8</u>	<u>2</u>	<u>48</u>	<u>15</u>	<u>7</u>	<u>3</u>	<u>20</u>	<u>66</u>	<u>23</u>	<u>19</u>	<u>11</u>	<u>22</u>	-67%
Total Graduate	867	852	890	896	870	418	437	453	518	586	1,285	1,289	1,343	1,414	1,456	13%
Grand Total																
Headcount	4,934	5,100	5,389	5,636	5,767	470	500	469	530	600	5,404	5,600	5,858	6,166	6,367	18%
FTE Enrollments by Student Level																
Undergraduate	3,805	3,986.6	4,196.7	4,480.5	4,618.8	11	13.4	3.1	2.7	2.9	3,816	4,000	4,200	4,483	4,622	21%
Graduate	<u>579</u>	<u>587.9</u>	<u>615.2</u>	<u>611.1</u>	<u>587.8</u>	<u>199</u>	<u>212.0</u>	<u>167.7</u>	<u>228.7</u>	<u>243.4</u>	<u>778</u>	<u>800</u>	<u>783</u>	<u>840</u>	<u>831</u>	7%
Total FTE	4,384	4,574.5	4,811.9	5,091.6	5,206.6	210	225.4	170.8	231.4	246.3	4,594.0	4,799.9	4,982.7	5,323.0	5,452.9	19%
SCH Produced by Student Level																
Undergraduate	57,072	59,799	62,950	67,208	69,282	158	201	46	40	43	57,230	60,000	62,996	67,248	69,325	21%
Graduate	<u>6,953</u>	<u>7,055</u>	<u>7,382</u>	<u>7,333</u>	<u>7,054</u>	<u>2,392</u>	<u>2,544</u>	<u>2,012</u>	<u>2,744</u>	<u>2,921</u>	<u>9,345</u>	<u>9,599</u>	<u>9,394</u>	<u>10,077</u>	<u>9,975</u>	7%
Total SCH	64,025	66,854	70,332	74,541	76,336	2,550	2,745	2,058	2,784	2,964	66,575	69,599	72,390	77,325	79,300	19%

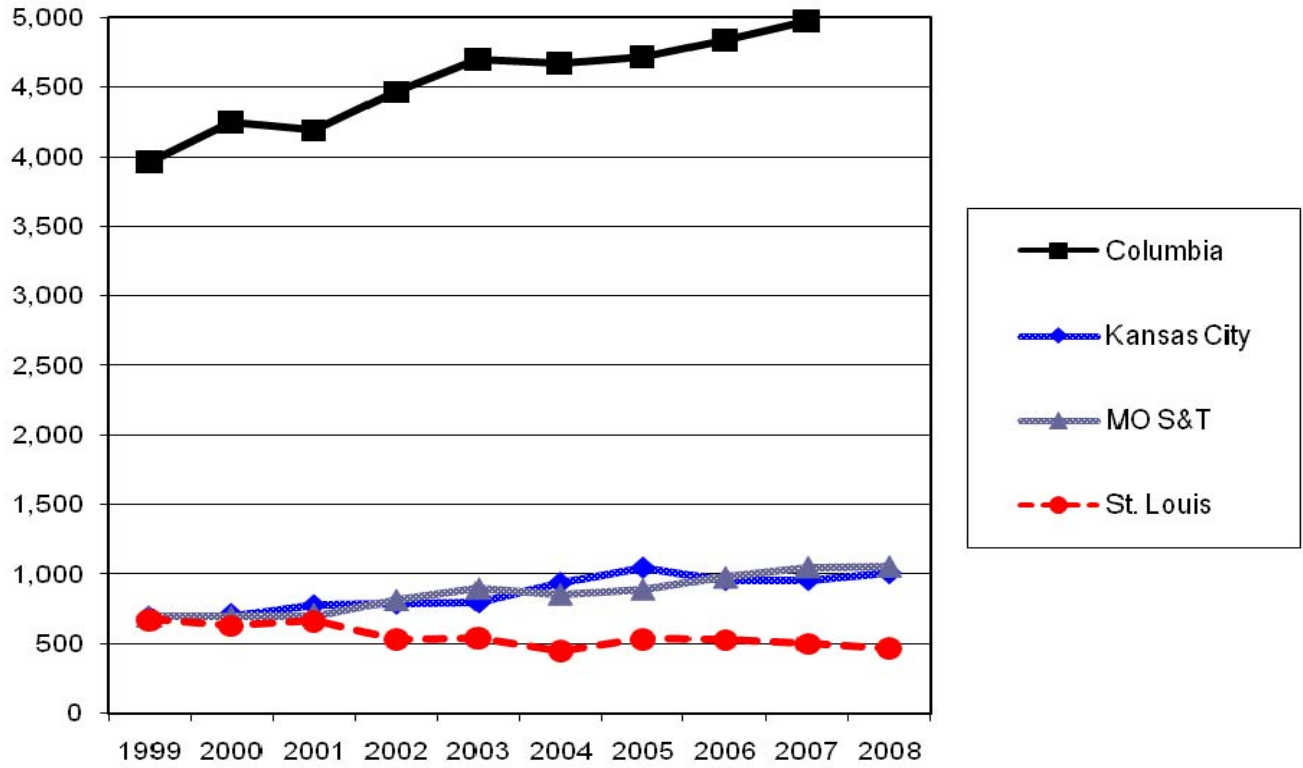
Source: EMSAS Fall Enrollment file

Table 2.4 Headcounts, Full-time Equivalence, and Student Credit Hours by Location, Fall 2004 to Fall 2008

	<u>On-Campus</u>					<u>St. Louis</u> <u>Off-Campus</u>					<u>Total</u>					5-yr. Change
	FS04	FS05	FS06	FS07	FS08	FS04	FS05	FS06	FS07	FS08	FS03	FS04	FS05	FS06	FS08	
Headcount by Student Level																
Undergraduate																
Fresh & Soph DS	2,108	2,164	2,196	2,133	2,452	3	10	5	3	6	2,111	2,174	2,201	2,136	2,458	16%
Junior & Senior DS	6,762	6,930	6,629	6,757	6,140	31	45	42	53	80	6,793	6,975	6,671	6,810	6,220	-8%
Nondegree	<u>218</u>	<u>236</u>	<u>257</u>	<u>267</u>	<u>301</u>	<u>3,450</u>	<u>3,221</u>	<u>3,330</u>	<u>3,219</u>	<u>3,379</u>	<u>3,668</u>	<u>3,457</u>	<u>3,587</u>	<u>3,486</u>	<u>3,680</u>	0%
Total Undergraduate	9,088	9,330	9,082	9,157	8,893	3,484	3,276	3,377	3,275	3,465	12,572	12,606	12,459	12,432	12,358	-2%
First Professional																
Optometry (OD)	<u>165</u>	<u>164</u>	<u>173</u>	<u>171</u>	<u>178</u>						<u>165</u>	<u>164</u>	<u>173</u>	<u>171</u>	<u>178</u>	8%
Total First Professional	165	164	173	171	178	0	0	0	0	0	165	164	173	171	178	8%
Graduate																
Masters & Ed. Spec.	2,075	2,097	2,185	2,172	2,175	98	97	86	101	240	2,173	2,194	2,271	2,273	2,415	11%
Doctoral	452	466	497	518	506	8	19	18	10	13	460	485	515	528	519	13%
Nondegree	<u>87</u>	<u>73</u>	<u>90</u>	<u>113</u>	<u>150</u>	<u>41</u>	<u>26</u>	<u>20</u>	<u>10</u>	<u>121</u>	<u>128</u>	<u>99</u>	<u>110</u>	<u>123</u>	<u>271</u>	112%
Total Graduate	2,614	2,636	2,772	2,803	2,831	147	142	124	121	374	2,761	2,778	2,896	2,924	3,205	16%
Grand Total																
Headcount	11,867	12,130	12,027	12,131	11,902	3,631	3,418	3,501	3,396	3,839	15,498	15,548	15,528	15,527	15,741	2%
FTE Enrollments by Student Level																
Undergraduate	6,493	6,751.7	6,634.3	6,696.3	6,558.2	1,242	1,194.8	1,238.2	1,215.7	1,255.3	7,735	7,947	7,873	7,912	7,814	1%
First Professional	165	164.0	173.0	171.0	178.0	0	0.0	0.0	0.0	0.0	165	164	173	171	178	8%
Graduate	<u>1,218</u>	<u>1,295.6</u>	<u>1,377.0</u>	<u>1,420.9</u>	<u>1,433.8</u>	<u>44</u>	<u>45.8</u>	<u>45.0</u>	<u>43.0</u>	<u>153.1</u>	<u>1,262</u>	<u>1,341</u>	<u>1,422</u>	<u>1,464</u>	<u>1,587</u>	26%
Total FTE	7,876	8,211.3	8,184.3	8,288.2	8,170.0	1,286	1,240.6	1,283.2	1,258.7	1,408.4	9,162.0	9,451.9	9,467.5	9,546.9	9,578.4	5%
SCH Produced by Student Level																
Undergraduate	97,394	101,276	99,515	100,444	98,373	18,634	17,922	18,573	18,235	18,830	116,028	119,198	118,088	118,679	117,203	1%
First Professional	3,331	3,339	3,429	3,506	3,566	0	0	0	0	0	3,331	3,339	3,429	3,506	3,566	7%
Graduate	<u>14,617</u>	<u>15,547</u>	<u>16,524</u>	<u>17,051</u>	<u>17,203</u>	<u>525</u>	<u>549</u>	<u>540</u>	<u>516</u>	<u>1,837</u>	<u>15,142</u>	<u>16,096</u>	<u>17,064</u>	<u>17,567</u>	<u>19,040</u>	26%
Total SCH	115,342	120,162	119,468	121,001	119,142	19,159	18,471	19,113	18,751	20,667	134,501	138,633	138,581	139,752	139,809	4%

Source: EMSAS Fall Enrollment file

Figure 3a. First-time College Freshmen History, 1999 to 2008

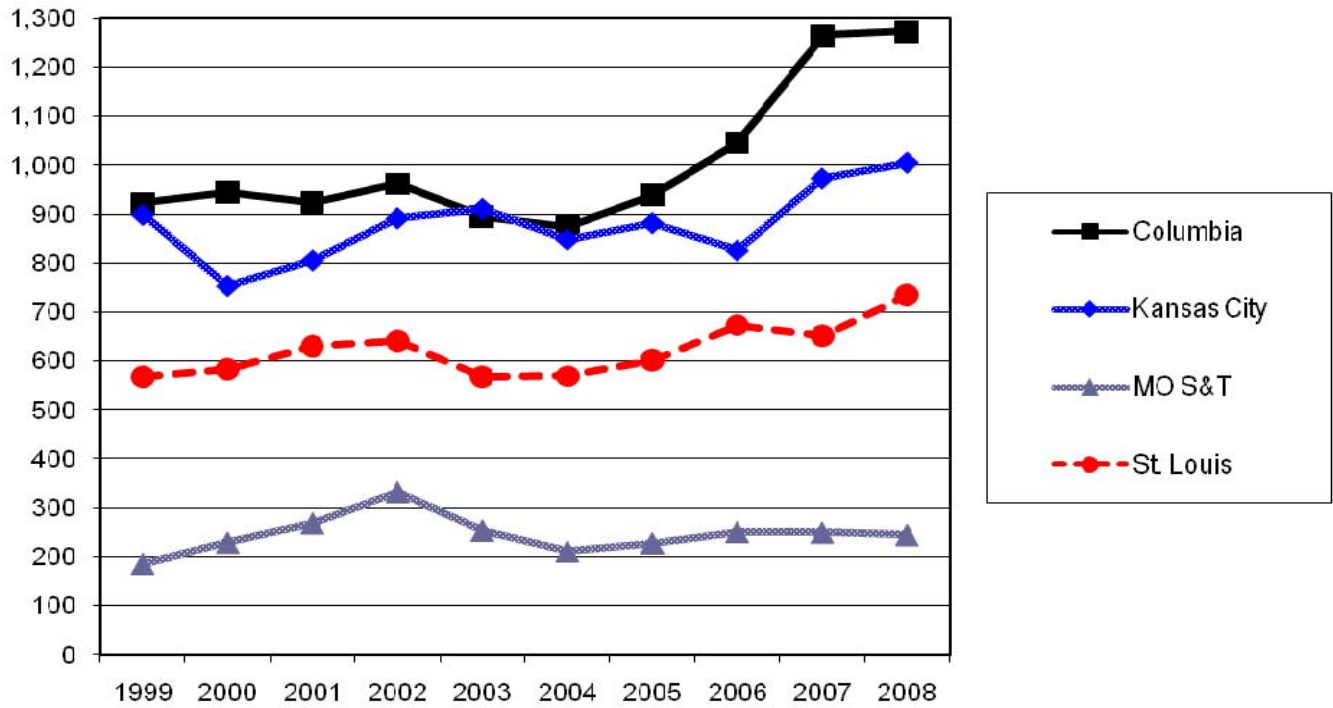


Source: EMSAS Fall Enrollment file
IR&P/LCB 03/09

First-time College Freshmen History, 1999 to 2008

Campus	1999	2000	2001	2002	2003	2004	2005	2006	2007	2008
Columbia	3,961	4,250	4,191	4,468	4,702	4,673	4,720	4,842	4,981	5,780
Kansas City	696	715	778	790	799	939	1,048	959	959	1,008
MO S&T	697	696	715	815	897	856	892	977	1,050	1,055
St. Louis	674	631	663	533	542	451	536	530	502	468
Total	6,028	6,292	6,347	6,606	6,940	6,919	7,196	7,308	7,492	8,311

Figure 3b. New Graduate Student History by Campus, 1999 to 2008

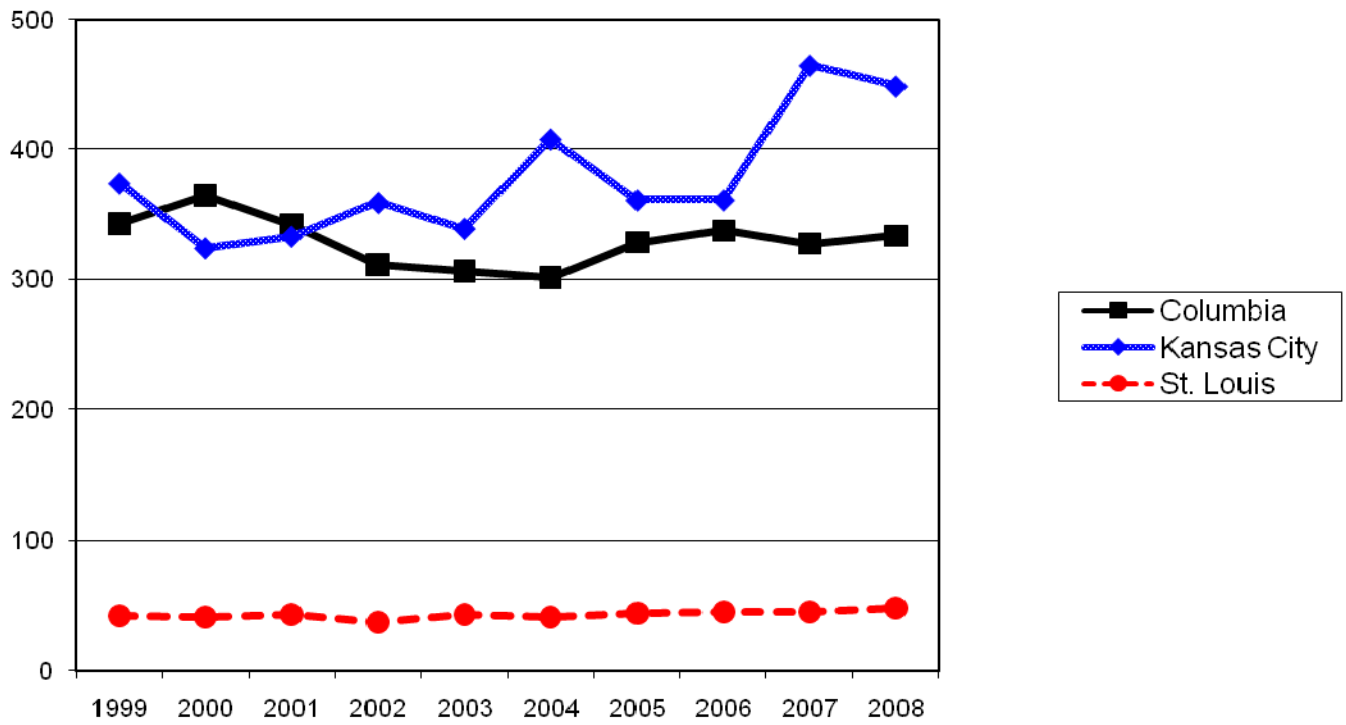


Source: EMSAS Fall Enrollment file

New Graduate Student History by Campus, 1999 to 2008

Campus	1999	2000	2001	2002	2003	2004	2005	2006	2007	2008
Columbia	922	944	923	962	894	873	939	1,046	1,266	1,274
Kansas City	899	754	806	892	911	848	882	826	973	1,005
MO S&T	186	229	269	332	254	212	228	251	250	245
St. Louis	569	584	632	641	568	570	603	674	652	736
Total	2,576	2,511	2,630	2,827	2,627	2,503	2,652	2,797	3,141	3,260

Figure 3c. New First Professional Student History by Campus, 1999 to 2008



Source: EMSAS Fall Enrollment file

New First Professional Student History By Campus, 1999 to 2008

Campus	1999	2000	2001	2002	2003	2004	2005	2006	2007	2008
Columbia	343	365	342	312	307	302	329	338	328	334
Kansas City	374	324	333	359	339	408	361	361	465	449
St. Louis	42	41	43	37	43	41	44	45	45	48
Total	759	730	718	708	689	751	734	744	838	831

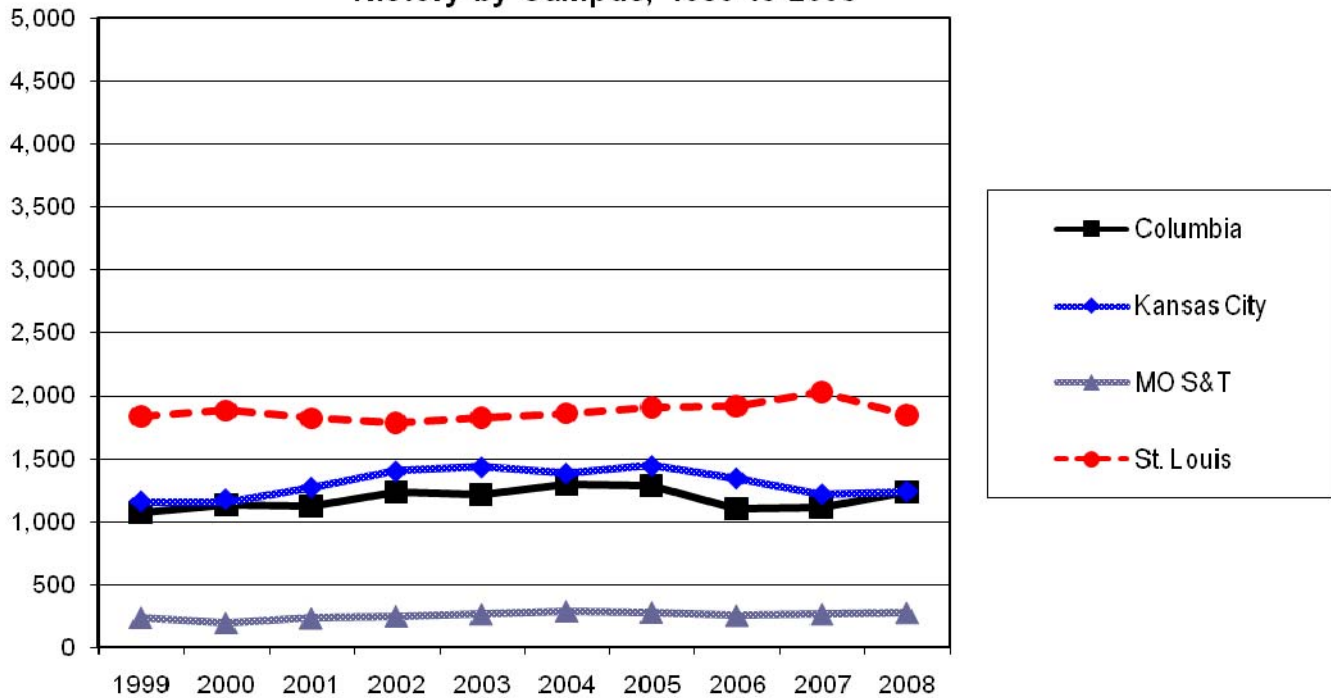
Table 3. On-Campus New Student Headcount, Fall 2004 - Fall 2008

		2004	2005	2006	2007	2008	5 yr. Change
Columbia							
Freshmen							
	Degree-Seeking	4,668	4,718	4,836	4,980	5,780	24%
	Non Degree-Seeking	5	2	6	1	0	-100%
Undergraduate Transfers							
	Degree-Seeking	1,217	1,178	1,030	986	1,077	-12%
	Non Degree-Seeking	78	103	78	130	153	96%
Professional							
	Degree-Seeking	302	329	338	328	334	11%
Graduate							
	Degree-Seeking	770	841	940	1,142	1,167	52%
	Non Degree-Seeking	103	98	106	124	107	4%
Kansas City							
Freshmen							
	Degree-Seeking	921	1,039	955	959	1,008	9%
	Non Degree-Seeking	18	9	4	0	0	-100%
Undergraduate Transfers							
	Degree-Seeking	1,246	1,302	1,176	1,192	1,238	-1%
	Non Degree-Seeking	136	141	167	22	0	-100%
Professional							
	Degree-Seeking	408	361	361	462	447	10%
	Non Degree-Seeking				3	2	
Graduate							
	Degree-Seeking	766	801	768	973	1,005	31%
	Non Degree-Seeking	82	81	58	0	0	-100%
Missouri S&T							
Freshmen							
	Degree-Seeking	842	884	962	1,041	1,045	24%
	Non Degree-Seeking	14	8	15	9	10	-29%
Undergraduate Transfers							
	Degree-Seeking	279	273	248	264	272	-3%
	Non Degree-Seeking	8	5	4	0	2	-75%
Graduate							
	Degree-Seeking	242	225	242	243	244	1%
	Non Degree-Seeking	13	3	9	7	1	-92%
St Louis							
Freshmen							
	Degree-Seeking	449	531	525	498	468	4%
	Non Degree-Seeking	2	5	5	4	11	450%
Undergraduate Transfers							
	Degree-Seeking	1,752	1,762	1,763	1,852	1,667	-5%
	Non Degree-Seeking	111	150	159	180	179	61%
Professional							
	Degree-Seeking	41	44	45	45	48	17%
Graduate							
	Degree-Seeking	547	576	621	583	685	25%
	Non Degree-Seeking	23	27	53	69	51	122%

Source: EMSAS Fall Enrollment file

IR&P/LCB 03/09

Figure 4. First-time On-Campus Undergraduate Transfer Student History by Campus, 1999 to 2008



Source: EMSAS Fall Enrollment file
IR&P/LCB 03/09

First-time On-Campus Undergraduate Transfer Student History by Campus, 1999 to 2008

Campus	1999	2000	2001	2002	2003	2004	2005	2006	2007	2008
Columbia	1,074	1,131	1,122	1,234	1,215	1,295	1,281	1,108	1,116	1,230
Kansas City	1,157	1,175	1,268	1,399	1,432	1,382	1,443	1,343	1,214	1,238
MO S&T	236	195	232	247	263	287	278	252	264	274
St. Louis	1,835	1,884	1,823	1,787	1,829	1,863	1,912	1,922	2,032	1,846
Total	4,302	4,385	4,445	4,667	4,739	4,827	4,914	4,625	4,626	4,588

Table 4.0a Resident Headcount History by Student Level, Load, and Campus, Fall 2004 to Fall 2008

Level	2004	2005	2006	2007	2008	5 yr. Change
UNIVERSITY OF MISSOURI SYSTEM FULL-TIME RESIDENT HEADCOUNT						
Undergraduate						
Freshman & Soph DS	13,215	13,482	13,412	13,504	14,380	9%
Junior & Senior DS	15,525	16,017	16,335	16,378	16,556	7%
Nondegree	88	117	124	138	130	48%
Total System Full-time Resident Undergraduate	28,828	29,616	29,871	30,020	31,066	8%
First Professional						
Dentistry (DDS)	231	239	252	265	276	19%
Law (JD)	778	804	778	771	776	0%
Medicine (MD)	619	533	611	641	652	5%
Optometry (OD)	99	87	83	86	89	-10%
Pharmacy (Dpharm)	205	228	225	252	278	36%
Vet. Med (DVM)	201	244	254	255	259	29%
Total System Full-time Resident 1st Professional	2,133	2,135	2,203	2,270	2,330	9%
Graduate						
Masters & Ed. Spec.	1,925	2,098	2,084	2,051	2,036	6%
Doctoral	406	450	516	489	501	23%
Nondegree	51	61	48	47	51	0%
Total System Full-time Resident Graduate	2,382	2,609	2,648	2,587	2,588	9%
Total System Full-time Resident Headcount	33,343	34,360	34,722	34,877	35,984	8%
UNIVERSITY OF MISSOURI SYSTEM PART-TIME RESIDENT HEADCOUNT						
Undergraduate						
Freshman & Soph DS	971	976	942	1,012	1,083	12%
Junior & Senior DS	4,512	4,535	4,326	4,307	4,142	-8%
Nondegree	6,304	5,846	5,784	5,483	5,477	-13%
Total System Part-time Resident Undergraduate	11,787	11,357	11,052	10,802	10,702	-9%
First Professional						
Law (JD)	47	19	35	40	33	-30%
Medicine (MD)	0	89	1	0	0	
Vet. Med (DVM)	46	5	3	0	0	
Total System Part-time Resident 1st Professional	93	113	39	40	33	-65%
Graduate						
Masters & Ed. Spec.	3,671	3,654	3,624	3,790	3,953	8%
Doctoral	1,092	1,154	1,103	1,180	1,197	10%
Nondegree	532	573	601	945	905	70%
Total System Part-time Resident Graduate	5,295	5,381	5,328	5,915	6,055	14%
Total System Part-time Resident Headcount	17,175	16,851	16,419	16,757	16,790	-2%
UNIVERSITY OF MISSOURI SYSTEM TOTAL RESIDENT HEADCOUNT						
Undergraduate						
Freshman & Soph DS	14,186	14,458	14,354	14,516	15,463	9%
Junior & Senior DS	20,037	20,552	20,661	20,685	20,698	3%
Nondegree	6,392	5,963	5,908	5,621	5,607	-12%
Total System Resident Undergraduate	40,615	40,973	40,923	40,822	41,768	3%
First Professional						
Dentistry (DDS)	231	239	252	265	276	19%
Law (JD)	825	823	813	811	809	-2%
Medicine (MD)	619	622	612	641	652	5%
Optometry (OD)	99	87	83	86	89	-10%
Pharmacy (Dpharm)	205	228	225	252	278	36%
Vet. Med (DVM)	247	249	257	255	259	5%
Total System Resident 1st Professional	2,226	2,248	2,242	2,310	2,363	6%
Graduate						
Masters & Ed. Spec.	5,596	5,752	5,708	5,841	5,989	7%
Doctoral	1,498	1,604	1,619	1,669	1,698	13%
Nondegree	583	634	649	992	956	64%
Total System Resident Graduate	7,677	7,990	7,976	8,502	8,643	13%
Grand Total System Resident Headcount	50,518	51,211	51,141	51,634	52,774	4%

Table 4.0b Non-Resident Headcount History by Student Level, Load, and Campus, Fall 2004 to Fall 2008

Level	2004	2005	2006	2007	2008	5 yr. Change
UNIVERSITY OF MISSOURI SYSTEM FULL-TIME NON-RESIDENT HEADCOUNT						
Undergraduate						
Freshman & Soph DS	2,823	2,988	3,051	3,191	3,649	29%
Junior & Senior DS	2,556	2,724	2,786	2,817	2,954	16%
Nondegree	53	92	96	111	151	185%
Total System Full-time Non-Resident Undergraduate	5,432	5,804	5,933	6,119	6,754	24%
First Professional						
Dentistry (DDS)	150	149	141	136	123	-18%
Law (JD)	134	143	151	137	126	-6%
Medicine (MD)	107	112	126	118	115	7%
Optometry (OD)	66	77	90	85	89	35%
Pharmacy (Dpharm)	20	15	13	13	20	0%
Vet. Med (DVM)	10	18	14	23	27	170%
Total System Full-time Non-Resident 1st Professional	487	514	535	512	500	3%
Graduate						
Masters & Ed. Spec.	1,409	1,495	1,697	1,777	1,774	26%
Doctoral	1,094	1,064	1,019	982	1,108	1%
Nondegree	32	29	34	28	37	16%
Total System Full-time Non-Resident Graduate	2,535	2,588	2,750	2,787	2,919	15%
Total System Full-time Non-Resident Headcount	8,454	8,906	9,218	9,418	10,173	20%
UNIVERSITY OF MISSOURI SYSTEM PART-TIME NON-RESIDENT HEADCOUNT						
Undergraduate						
Freshman & Soph DS	138	150	180	221	195	41%
Junior & Senior DS	516	579	576	582	592	15%
Nondegree	266	233	229	120	201	-24%
Total System Part-time Non-Resident Undergraduate	920	962	985	923	988	7%
First Professional						
Law (JD)	15	6	7	8	10	-33%
Medicine (MD)	0	2	0	0	0	
Total System Part-time Non-Resident 1st Professional	15	8	7	8	10	-33%
Graduate						
Masters & Ed. Spec.	1,333	1,305	1,372	1,497	1,668	25%
Doctoral	734	801	850	864	840	14%
Nondegree	187	191	210	196	266	42%
Total System Part-time Non-Resident Graduate	2,254	2,297	2,432	2,557	2,774	23%
Total System Part-time Non-Resident Headcount	3,189	3,267	3,424	3,488	3,772	18%
UNIVERSITY OF MISSOURI SYSTEM TOTAL NON-RESIDENT HEADCOUNT						
Undergraduate						
Freshman & Soph DS	2,961	3,138	3,231	3,412	3,844	30%
Junior & Senior DS	3,072	3,303	3,362	3,399	3,546	15%
Nondegree	319	325	325	231	352	10%
Total System Non-Resident Undergraduate	6,352	6,766	6,918	7,042	7,742	22%
First Professional						
Dentistry (DDS)	150	149	141	136	123	-18%
Law (JD)	149	149	158	145	136	-9%
Medicine (MD)	107	114	126	118	115	7%
Optometry (OD)	66	77	90	85	89	35%
Pharmacy (Dpharm)	20	15	13	13	20	0%
Vet. Med (DVM)	10	18	14	23	27	170%
Total System Non-Resident 1st Professional	502	522	542	520	510	2%
Graduate						
Masters & Ed. Spec.	2,742	2,800	3,069	3,274	3,442	26%
Doctoral	1,828	1,865	1,869	1,846	1,948	7%
Nondegree	219	220	244	224	303	38%
Total System Non-Resident Graduate	4,789	4,885	5,182	5,344	5,693	19%
Grand Total System Non-Resident Headcount	11,643	12,173	12,642	12,906	13,945	20%

Table 4.1a Resident Headcount History by Student Level, Load, and Campus, Fall 2004 to Fall 2008

Level	2004	2005	2006	2007	2008	5 yr. Change
UNIVERSITY OF MISSOURI-COLUMBIA FULL-TIME RESIDENT HEADCOUNT						
Undergraduate						
Freshman & Soph DS	8,609	8,552	8,463	8,438	9,079	5%
Junior & Senior DS	8,232	8,504	8,845	8,769	8,967	9%
Nondegree	5	3	1	9	2	-60%
Total UMC Full-time Resident Undergraduate	16,846	17,059	17,309	17,216	18,048	7%
First Professional						
Law (JD)	402	415	404	404	398	-1%
Medicine (MD)	364	274	364	370	375	3%
Vet. Med (DVM)	201	244	254	255	259	29%
Total UMC Full-time Resident 1st Professional	967	933	1,022	1,029	1,032	7%
Graduate						
Masters & Ed. Spec.	1,008	1,061	1,112	1,074	1,054	5%
Doctoral	270	292	336	305	322	19%
Nondegree	42	45	38	28	33	-21%
Total UMC Full-time Resident Graduate	1,320	1,398	1,486	1,407	1,409	7%
Total UMC Full-time Resident Headcount	19,133	19,390	19,817	19,652	20,489	7%
UNIVERSITY OF MISSOURI-COLUMBIA PART-TIME RESIDENT HEADCOUNT						
Undergraduate						
Freshman & Soph DS	249	255	217	267	249	0%
Junior & Senior DS	703	737	698	746	698	-1%
Nondegree	231	229	204	143	213	-8%
Total UMC Part-time Resident Undergraduate	1,183	1,221	1,119	1,156	1,160	-2%
First Professional						
Law (JD)	15	9	13	14	14	-7%
Medicine (MD)	0	89	1	0	0	
Vet. Med (DVM)	46	5	3	0	0	
Total UMC Part-time Resident 1st Professional	61	103	17	14	14	-77%
Graduate						
Masters & Ed. Spec.	786	858	808	935	1,012	29%
Doctoral	643	700	658	700	659	2%
Nondegree	246	356	328	348	469	91%
Total UMC Part-time Resident Graduate	1,675	1,914	1,794	1,983	2,140	28%
Total UMC Part-time Resident Headcount	2,919	3,238	2,930	3,153	3,314	14%
UNIVERSITY OF MISSOURI-COLUMBIA TOTAL RESIDENT HEADCOUNT						
Undergraduate						
Freshman & Soph DS	8,858	8,807	8,680	8,705	9,328	5%
Junior & Senior DS	8,935	9,241	9,543	9,515	9,665	8%
Nondegree	236	232	205	152	215	-9%
Total UMC Resident Undergraduate	18,029	18,280	18,428	18,372	19,208	7%
First Professional						
Law (JD)	417	424	417	418	412	-1%
Medicine (MD)	364	363	365	370	375	3%
Vet. Med (DVM)	247	249	257	255	259	5%
Total UMC Resident 1st Professional	1,028	1,036	1,039	1,043	1,046	2%
Graduate						
Masters & Ed. Spec.	1,794	1,919	1,920	2,009	2,066	15%
Doctoral	913	992	994	1,005	981	7%
Nondegree	288	401	366	376	502	74%
Total UMC Resident Graduate	2,995	3,312	3,280	3,390	3,549	18%
Grand Total UMC Resident Headcount	22,052	22,628	22,747	22,805	23,803	8%

Table 4.1b Non-Resident Headcount History by Student Level, Load, and Campus, Fall 2004 to Fall 2008

Level	2004	2005	2006	2007	2008	5 yr. Change
UNIVERSITY OF MISSOURI-COLUMBIA FULL-TIME NON-RESIDENT HEADCOUNT						
Undergraduate						
Freshman & Soph DS	1,633	1,803	1,790	1,864	2,265	39%
Junior & Senior DS	1,024	1,074	1,094	1,169	1,249	22%
Nondegree	30	29	32	35	49	63%
Total UMC Full-time Non-Resident Undergraduate	2,687	2,906	2,916	3,068	3,563	33%
First Professional						
Law (JD)	22	20	38	38	40	82%
Medicine (MD)	9	7	10	5	12	33%
Vet. Med (DVM)	10	18	14	23	27	170%
Total UMC Full-time Non-Resident 1st Professional	41	45	62	66	79	93%
Graduate						
Masters & Ed. Spec.	531	588	646	664	678	28%
Doctoral	640	648	643	626	671	5%
Nondegree	23	23	26	21	25	9%
Total UMC Full-time Non-Resident Graduate	1,194	1,259	1,315	1,311	1,374	15%
Total UMC Full-time Non-Resident Headcount	3,922	4,210	4,293	4,445	5,016	28%
UNIVERSITY OF MISSOURI-COLUMBIA PART-TIME NON-RESIDENT HEADCOUNT						
Undergraduate						
Freshman & Soph DS	36	32	41	54	60	67%
Junior & Senior DS	55	61	56	79	81	47%
Nondegree	76	56	43	13	68	-11%
Total UMC Part-time Non-Resident Undergraduate	167	149	140	146	209	25%
First Professional						
Law (JD)	0	0	1	2	1	
Medicine (MD)	0	2	0	0	0	
Vet. Med (DVM)	0		0	0	0	
Total UMC Part-time Non-Resident 1st Professional	0	2	1	2	1	
Graduate						
Masters & Ed. Spec.	376	384	394	433	479	27%
Doctoral	390	432	464	476	480	23%
Nondegree	96	125	145	98	142	48%
Total UMC Part-time Non-Resident Graduate	862	941	1,003	1,007	1,101	28%
Total UMC Part-time Non-Resident Headcount	1,029	1,092	1,144	1,155	1,311	27%
UNIVERSITY OF MISSOURI-COLUMBIA TOTAL NON-RESIDENT HEADCOUNT						
Undergraduate						
Freshman & Soph DS	1,669	1,835	1,831	1,918	2,325	39%
Junior & Senior DS	1,079	1,135	1,150	1,248	1,330	23%
Nondegree	106	85	75	48	117	10%
Total UMC Non-Resident Undergraduate	2,854	3,055	3,056	3,214	3,772	32%
First Professional						
Law (JD)	22	20	39	40	41	86%
Medicine (MD)	9	9	10	5	12	33%
Vet. Med (DVM)	10	18	14	23	27	170%
Total UMC Non-Resident 1st Professional	41	47	63	68	80	95%
Graduate						
Masters & Ed. Spec.	907	972	1,040	1,097	1,157	28%
Doctoral	1,030	1,080	1,107	1,102	1,151	12%
Nondegree	119	148	171	119	167	40%
Total UMC Non-Resident Graduate	2,056	2,200	2,318	2,318	2,475	20%
Grand Total UMC Non-Resident Headcount	4,951	5,302	5,437	5,600	6,327	28%

Table 4.2a Resident Headcount History by Student Level, Load, and Campus, Fall 2004 to Fall 2008

Level	2004	2005	2006	2007	2008	5 yr. Change
UNIVERSITY OF MISSOURI-KANSAS CITY FULL-TIME RESIDENT HEADCOUNT						
Undergraduate						
Freshman & Soph DS	1,761	1,956	1,948	1,962	1,987	13%
Junior & Senior DS	2,209	2,215	2,144	2,035	2,226	1%
Nondegree	14	17	10	27	17	21%
Total UMKC Full-time Resident Undergraduate	3,984	4,188	4,102	4,024	4,230	6%
First Professional						
Dentistry (DDS)	231	239	252	265	276	19%
Law (JD)	376	389	374	367	378	1%
Medicine (MD)	255	259	247	271	277	9%
Pharmacy (Dpharm)	205	228	225	252	278	36%
Total UMKC Full-time Resident 1st Professional	1,067	1,115	1,098	1,155	1,209	13%
Graduate						
Masters & Ed. Spec.	476	515	479	439	435	-9%
Doctoral	44	43	49	41	45	2%
Nondegree	7	8	5	3	2	-71%
Total UMKC Full-time Resident Graduate	527	566	533	483	482	-9%
Total UMKC Full-time Resident Headcount	5,578	5,869	5,733	5,662	5,921	6%
UNIVERSITY OF MISSOURI-KANSAS CITY PART-TIME RESIDENT HEADCOUNT						
Undergraduate						
Freshman & Soph DS	207	240	236	304	278	34%
Junior & Senior DS	844	792	791	768	857	2%
Nondegree	2,437	2,281	2,142	1,997	1,759	-28%
Total UMKC Part-time Resident Undergraduate	3,488	3,313	3,169	3,069	2,894	-17%
First Professional						
Law (JD)	32	10	22	26	19	-41%
Total UMKC Part-time Resident 1st Professional	32	10	22	26	19	-41%
Graduate						
Masters & Ed. Spec.	1,115	1,036	1,019	1,090	1,073	-4%
Doctoral	173	172	152	168	204	18%
Nondegree	131	124	174	497	226	73%
Total UMKC Part-time Resident Graduate	1,419	1,332	1,345	1,755	1,503	6%
Total UMKC Part-time Resident Headcount	4,939	4,655	4,536	4,850	4,416	-11%
UNIVERSITY OF MISSOURI-KANSAS CITY TOTAL RESIDENT HEADCOUNT						
Undergraduate						
Freshman & Soph DS	1,968	2,196	2,184	2,266	2,265	15%
Junior & Senior DS	3,053	3,007	2,935	2,803	3,083	1%
Nondegree	2,451	2,298	2,152	2,024	1,776	-28%
Total UMKC Resident Undergraduate	7,472	7,501	7,271	7,093	7,124	-5%
First Professional						
Dentistry (DDS)	231	239	252	265	276	19%
Law (JD)	408	399	396	393	397	-3%
Medicine (MD)	255	259	247	271	277	9%
Pharmacy (Dpharm)	205	228	225	252	278	36%
Total UMKC Resident 1st Professional	1,099	1,125	1,120	1,181	1,228	12%
Graduate						
Masters & Ed. Spec.	1,591	1,551	1,498	1,529	1,508	-5%
Doctoral	217	215	201	209	249	15%
Nondegree	138	132	179	500	228	65%
Total UMKC Resident Graduate	1,946	1,898	1,878	2,238	1,985	2%
Grand Total UMKC Resident Headcount	10,517	10,524	10,269	10,512	10,337	-2%

Table 4.2b Non-Resident Headcount History by Student Level, Load, and Campus, Fall 2004 to Fall 2008

Level	2004	2005	2006	2007	2008	5 yr. Change
UNIVERSITY OF MISSOURI-KANSAS CITY FULL-TIME NON-RESIDENT HEADCOUNT						
Undergraduate						
Freshman & Soph DS	583	597	627	650	658	13%
Junior & Senior DS	836	878	941	839	933	12%
Nondegree	18	13	17	24	41	128%
Total UMKC Full-time Non-Resident Undergraduate	1,437	1,488	1,585	1,513	1,632	14%
First Professional						
Dentistry (DDS)	150	149	141	136	123	-18%
Law (JD)	112	123	113	99	86	-23%
Medicine (MD)	98	105	116	113	103	5%
Pharmacy (Dpharm)	20	15	13	13	20	0%
Total UMKC Full-time Non-Resident 1st Professional	380	392	383	361	332	-13%
Graduate						
Masters & Ed. Spec.	442	444	512	549	580	31%
Doctoral	116	99	100	105	152	31%
Nondegree	2	0	5	1	2	0%
Total UMKC Full-time Non-Resident Graduate	560	543	617	655	734	31%
Total UMKC Full-time Non-Resident Headcount	2,377	2,423	2,585	2,529	2,698	14%
UNIVERSITY OF MISSOURI-KANSAS CITY PART-TIME NON-RESIDENT HEADCOUNT						
Undergraduate						
Freshman & Soph DS	62	72	69	126	93	50%
Junior & Senior DS	291	315	311	291	318	9%
Nondegree	131	111	147	71	94	-28%
Total UMKC Part-time Non-Resident Undergraduate	484	498	527	488	505	4%
First Professional						
Law (JD)	15	6	6	6	9	-40%
Total UMKC Part-time Non-Resident 1st Professional	15	6	6	6	9	-40%
Graduate						
Masters & Ed. Spec.	589	575	562	599	635	8%
Doctoral	213	229	221	222	230	8%
Nondegree	61	51	43	86	67	10%
Total UMKC Part-time Non-Resident Graduate	863	855	826	907	932	8%
Total UMKC Part-time Non-Resident Headcount	1,362	1,359	1,359	1,401	1,446	6%
UNIVERSITY OF MISSOURI-KANSAS CITY TOTAL NON-RESIDENT HEADCOUNT						
Undergraduate						
Freshman & Soph DS	645	669	696	776	751	16%
Junior & Senior DS	1,127	1,193	1,252	1,130	1,251	11%
Nondegree	149	124	164	95	135	-9%
Total UMKC Non-Resident Undergraduate	1,921	1,986	2,112	2,001	2,137	11%
First Professional						
Dentistry (DDS)	150	149	141	136	123	-18%
Law (JD)	127	129	119	105	95	-25%
Medicine (MD)	98	105	116	113	103	5%
Pharmacy (Dpharm)	20	15	13	13	20	0%
Total UMKC Non-Resident 1st Professional	395	398	389	367	341	-14%
Graduate						
Masters & Ed. Spec.	1,031	1,019	1,074	1,148	1,215	18%
Doctoral	329	328	321	327	382	16%
Nondegree	63	51	48	87	69	10%
Total UMKC Non-Resident Graduate	1,423	1,398	1,443	1,562	1,666	17%
Grand Total UMKC Non-Resident Headcount	3,739	3,782	3,944	3,930	4,144	11%

Table 4.3a Resident Headcount History by Student Level, Load, and Campus, Fall 2004 to Fall 2008

Level	2004	2005	2006	2007	2008	5 yr. Change
MISSOURI S&T FULL-TIME RESIDENT HEADCOUNT						
Undergraduate						
Freshman & Soph DS	1,417	1,453	1,497	1,607	1,650	16%
Junior & Senior DS	1,576	1,677	1,825	1,923	2,012	28%
Nondegree	4	6	6	1	4	0%
Total MO S&T Full-time Resident Undergraduate	2,997	3,136	3,328	3,531	3,666	22%
Graduate						
Masters & Ed. Spec.	124	141	132	137	118	-5%
Doctoral	55	67	66	84	75	36%
Nondegree	1	0	1	0	0	
Total MO S&T Full-time Resident Graduate	180	208	199	221	193	7%
Total Missouri S&T Full-time Resident Headcount	3,177	3,344	3,527	3,752	3,859	21%
MISSOURI S&T PART-TIME RESIDENT HEADCOUNT						
Undergraduate						
Freshman & Soph DS	64	53	52	62	57	-11%
Junior & Senior DS	190	239	244	223	229	21%
Nondegree	81	65	41	38	22	-73%
Total MO S&T Part-time Resident Undergraduate	335	357	337	323	308	-8%
Graduate						
Masters & Ed. Spec.	165	201	219	243	261	58%
Doctoral	26	27	33	30	43	65%
Nondegree	37	14	6	7	15	-59%
Total MO S&T Part-time Resident Graduate	228	242	258	280	319	40%
Total Missouri S&T Part-time Resident Headcount	563	599	595	603	627	11%
MISSOURI S&T TOTAL RESIDENT HEADCOUNT						
Undergraduate						
Freshman & Soph DS	1,481	1,506	1,549	1,669	1,707	15%
Junior & Senior DS	1,766	1,916	2,069	2,146	2,241	27%
Nondegree	85	71	47	39	26	-69%
Total MO S&T Resident Undergraduate	3,332	3,493	3,665	3,854	3,974	19%
Graduate						
Masters & Ed. Spec.	289	342	351	380	379	31%
Doctoral	81	94	99	114	118	46%
Nondegree	38	14	7	7	15	-61%
Total MO S&T Resident Graduate	408	450	457	501	512	25%
Grand Total Missouri S&T Resident Headcount	3,740	3,943	4,122	4,355	4,486	20%

Table 4.3b Non-Resident Headcount History by Student Level, Load, and Campus, Fall 2004 to Fall 2008

Level	2004	2005	2006	2007	2008	5 yr. Change
MISSOURI S&T FULL-TIME NON-RESIDENT HEADCOUNT						
Undergraduate						
Freshman & Soph DS	402	395	406	446	459	14%
Junior & Senior DS	334	357	364	397	419	25%
Nondegree	4	4	0	1	4	0%
Total MO S&T Full-time Non-Resident Undergraduate	740	756	770	844	882	19%
Graduate						
Masters & Ed. Spec.	319	328	336	362	352	10%
Doctoral	259	234	211	185	212	-18%
Nondegree	5	1	1	0	1	-80%
Total MO S&T Full-time Non-Resident Graduate	583	563	548	547	565	-3%
Total Missouri S&T Full-time Non-Resident Headcount	1,323	1,319	1,318	1,391	1,447	9%
MISSOURI S&T PART-TIME NON-RESIDENT HEADCOUNT						
Undergraduate						
Freshman & Soph DS	13	14	38	12	14	8%
Junior & Senior DS	22	31	39	35	35	59%
Nondegree	12	17	3	7	6	-50%
Total MO S&T Part-time Non-Resident Undergraduate	47	62	80	54	55	17%
Graduate						
Masters & Ed. Spec.	234	227	287	317	339	45%
Doctoral	37	41	40	45	34	-8%
Nondegree	23	8	11	4	6	-74%
Total MO S&T Part-time Non-Resident Graduate	294	276	338	366	379	29%
Total Missouri S&T Part-time Non-Resident Headcount	341	338	418	420	434	27%
MISSOURI S&T TOTAL NON-RESIDENT HEADCOUNT						
Undergraduate						
Freshman & Soph DS	415	409	444	458	473	14%
Junior & Senior DS	356	388	403	432	454	28%
Nondegree	16	21	3	8	10	-38%
Total MO S&T Non-Resident Undergraduate	787	818	850	898	937	19%
Graduate						
Masters & Ed. Spec.	553	555	623	679	691	25%
Doctoral	296	275	251	230	246	-17%
Nondegree	28	9	12	4	7	-75%
Total MO S&T Non-Resident Graduate	877	839	886	913	944	8%
Grand Total Missouri S&T Non-Resident Headcount	1,664	1,657	1,736	1,811	1,881	13%

Table 4.4a Resident Headcount History by Student Level, Load, and Campus, Fall 2004 to Fall 2008

Level	2004	2005	2006	2007	2008	5 yr. Change
UNIVERSITY OF MISSOURI-ST. LOUIS FULL-TIME RESIDENT HEADCOUNT						
Undergraduate						
Freshman & Soph DS	1,428	1,521	1,504	1,497	1,664	17%
Junior & Senior DS	3,508	3,621	3,521	3,651	3,351	-4%
Nondegree	65	91	107	101	107	65%
Total UMSL Full-time Resident Undergraduate	5,001	5,233	5,132	5,249	5,122	2%
First Professional						
Optometry (OD)	99	87	83	86	89	-10%
Total UMSL Full-time Resident 1st Professional	99	87	83	86	89	-10%
Graduate						
Masters & Ed. Spec.	317	381	361	401	429	35%
Doctoral	37	48	65	59	59	59%
Nondegree	1	8	4	16	16	1500%
Total UMSL Full-time Resident Graduate	355	437	430	476	504	42%
Total UMSL Full-time Resident Headcount	5,455	5,757	5,645	5,811	5,715	5%
UNIVERSITY OF MISSOURI-ST. LOUIS PART-TIME RESIDENT HEADCOUNT						
Undergraduate						
Freshman & Soph DS	451	428	437	379	499	11%
Junior & Senior DS	2,775	2,767	2,593	2,570	2,358	-15%
Nondegree	3,555	3,271	3,397	3,305	3,483	-2%
Total UMSL Part-time Resident Undergraduate	6,781	6,466	6,427	6,254	6,340	-7%
First Professional						
Optometry (OD)	0	0	0	0	0	
Total UMSL Part-time Resident 1st Professional	0	0	0	0	0	
Graduate						
Masters & Ed. Spec.	1,605	1,559	1,578	1,522	1,607	0%
Doctoral	250	255	260	282	291	16%
Nondegree	118	79	93	93	195	65%
Total UMSL Part-time Resident Graduate	1,973	1,893	1,931	1,897	2,093	6%
Total UMSL Part-time Resident Headcount	8,754	8,359	8,358	8,151	8,433	-4%
UNIVERSITY OF MISSOURI-ST. LOUIS TOTAL RESIDENT HEADCOUNT						
Undergraduate						
Freshman & Soph DS	1,879	1,949	1,941	1,876	2,163	15%
Junior & Senior DS	6,283	6,388	6,114	6,221	5,709	-9%
Nondegree	3,620	3,362	3,504	3,406	3,590	-1%
Total UMSL Resident Undergraduate	11,782	11,699	11,559	11,503	11,462	-3%
First Professional						
Optometry (OD)	99	87	83	86	89	-10%
Total UMSL Resident 1st Professional	99	87	83	86	89	-10%
Graduate						
Masters & Ed. Spec.	1,922	1,940	1,939	1,923	2,036	6%
Doctoral	287	303	325	341	350	22%
Nondegree	119	87	97	109	211	77%
Total UMSL Resident Graduate	2,328	2,330	2,361	2,373	2,597	12%
Grand Total UMSL Resident Headcount	14,209	14,116	14,003	13,962	14,148	0%

Table 4.4b Non-Resident Headcount History by Student Level, Load, and Campus, Fall 2004 to Fall 2008

Level	2004	2005	2006	2007	2008	5 yr. Change
UNIVERSITY OF MISSOURI-ST. LOUIS FULL-TIME NON-RESIDENT HEADCOUNT						
Undergraduate						
Freshman & Soph DS	205	193	228	231	267	30%
Junior & Senior DS	362	415	387	412	353	-2%
Nondegree	1	46	47	51	57	5600%
Total UMSL Full-time Non-Resident Undergraduate	568	654	662	694	677	19%
First Professional						
Optometry (OD)	66	77	90	85	89	35%
Total UMSL Full-time Non-Resident 1st Professional	66	77	90	85	89	35%
Graduate						
Masters & Ed. Spec.	117	135	203	202	164	40%
Doctoral	79	83	65	66	73	-8%
Nondegree	2	5	2	6	9	
Total UMSL Full-time Non-Resident Graduate	198	223	270	274	246	24%
Total UMSL Full-time Non-Resident Headcount	832	954	1,022	1,053	1,012	22%
UNIVERSITY OF MISSOURI-ST. LOUIS PART-TIME NON-RESIDENT HEADCOUNT						
Undergraduate						
Freshman & Soph DS	27	32	32	29	28	4%
Junior & Senior DS	148	172	170	177	158	7%
Nondegree	47	49	36	29	33	-30%
Total UMSL Part-time Non-Resident Undergraduate	222	253	238	235	219	-1%
First Professional						
Optometry (OD)	0	0	0	0	0	
Total UMSL Part-time Non-Resident 1st Professional	0	0	0	0	0	
Graduate						
Masters & Ed. Spec.	134	119	129	148	215	60%
Doctoral	94	99	125	121	96	2%
Nondegree	7	7	11	8	51	629%
Total UMSL Part-time Non-Resident Graduate	235	225	265	277	362	54%
Total UMSL Part-time Non-Resident Headcount	457	478	503	512	581	27%
UNIVERSITY OF MISSOURI-ST. LOUIS TOTAL NON-RESIDENT HEADCOUNT						
Undergraduate						
Freshman & Soph DS	232	225	260	260	295	27%
Junior & Senior DS	510	587	557	589	511	0%
Nondegree	48	95	83	80	90	88%
Total UMSL Non-Resident Undergraduate	790	907	900	929	896	13%
First Professional						
Optometry (OD)	66	77	90	85	89	35%
Total UMSL Non-Resident 1st Professional	66	77	90	85	89	35%
Graduate						
Masters & Ed. Spec.	251	254	332	350	379	51%
Doctoral	173	182	190	187	169	-2%
Nondegree	9	12	13	14	60	567%
Total UMSL Non-Resident Graduate	433	448	535	551	608	40%
Grand Total UMSL Non-Resident Headcount	1,289	1,432	1,525	1,565	1,593	24%

Table 5. Headcount Students by Gender and Ethnicity

Data - Classification	<u>UMC</u>		<u>UMKC</u>		<u>MO S&T</u>		<u>UMSL</u>		<u>TOTAL</u>	
	HC	%	HC	%	HC	%	HC	%	HC	%
A. Gender										
Men										
First-time DS Freshmen	2,705	47%	399	40%	808	77%	200	43%	4,112	50%
Other Undergraduate	8,370	49%	3,417	41%	3,003	78%	4,134	35%	18,924	46%
First Professional	540	48%	825	53%	0	-	79	44%	1,444	50%
Graduate	<u>2,374</u>	39%	<u>1,572</u>	43%	<u>1,138</u>	78%	<u>1,038</u>	32%	<u>6,122</u>	43%
Total	13,989	46%	6,213	43%	4,949	78%	5,451	35%	30,602	46%
Women										
First-time DS Freshmen	3,077	53%	609	60%	237	23%	268	57%	4,191	50%
Other Undergraduate	8,828	51%	4,836	59%	863	22%	7,756	65%	22,283	54%
First Professional	586	52%	741	47%	0	-	99	56%	1,426	50%
Graduate	<u>3,650</u>	61%	<u>2,082</u>	57%	<u>318</u>	22%	<u>2,167</u>	68%	<u>8,217</u>	57%
Total	16,141	54%	8,268	57%	1,418	22%	10,290	65%	36,117	54%
Grand Total	30,130		14,481		6,367		15,741		66,719	

Table 5. Headcount Students by Gender and Ethnicity (continued)

Data - Classification	<u>UMC</u>		<u>UMKC</u>		<u>MO S&T</u>		<u>UMSL</u>		<u>TOTAL</u>	
	HC	%	HC	%	HC	%	HC	%	HC	%
B. Ethnicity *										
Am Indian/Alaskan Native										
First-time DS Freshmen	41	1%	9	1%	7	1%	1	0%	58	1%
Other Undergraduate	102	1%	60	1%	23	1%	38	0%	223	1%
First Professional	13	1%	7	1%	0	-	1	1%	21	1%
Graduate	<u>29</u>	1%	<u>17</u>	1%	<u>3</u>	0%	<u>12</u>	0%	<u>61</u>	0%
Total	185	1%	93	1%	33	1%	52	0%	363	1%
Asian/Pacific Islander										
First-time DS Freshmen	128	2%	96	10%	22	2%	11	3%	257	3%
Other Undergraduate	445	3%	404	6%	109	3%	337	3%	1,295	3%
First Professional	59	6%	201	15%	0	-	9	6%	269	11%
Graduate	<u>97</u>	2%	<u>89</u>	3%	<u>60</u>	4%	<u>66</u>	2%	<u>312</u>	2%
Total	729	3%	790	6%	191	3%	423	3%	2,133	3%
Black Non-Hispanic										
First-time DS Freshmen	422	8%	176	19%	51	5%	101	23%	750	9%
Other Undergraduate	1,034	6%	1,070	15%	188	5%	1,659	15%	3,951	10%
First Professional	47	4%	53	4%	0	-	10	6%	110	4%
Graduate	<u>198</u>	3%	<u>285</u>	9%	<u>60</u>	4%	<u>430</u>	15%	<u>973</u>	7%
Total	1,701	6%	1,584	12%	299	5%	2,200	16%	5,784	9%
Hispanic										
First-time DS Freshmen	128	2%	41	4%	14	1%	4	1%	187	2%
Other Undergraduate	313	2%	397	6%	83	2%	196	2%	989	3%
First Professional	21	2%	39	3%	0	-	2	1%	62	2%
Graduate	<u>119</u>	2%	<u>83</u>	3%	<u>35</u>	2%	<u>45</u>	2%	<u>282</u>	2%
Total	581	2%	560	4%	132	2%	247	2%	1,520	2%
White Non-Hispanic										
First-time DS Freshmen	4,790	86%	583	62%	876	88%	289	67%	6,538	82%
Other Undergraduate	14,452	87%	5,005	70%	3,199	86%	8,230	77%	30,886	81%
First Professional	909	86%	1,029	77%	0	-	135	84%	2,073	81%
Graduate	<u>4,120</u>	72%	<u>2,143</u>	65%	<u>715</u>	51%	<u>2,005</u>	71%	<u>8,983</u>	68%
Total	24,271	84%	8,760	69%	4,790	78%	10,659	75%	48,480	78%
Nonresident Alien										
First-time DS Freshmen	92	2%	29	3%	25	3%	28	6%	174	2%
Other Undergraduate	329	2%	219	3%	120	3%	263	2%	931	2%
First Professional	4	0%	13	1%	0	-	4	2%	21	1%
Graduate	<u>1,136</u>	20%	<u>669</u>	20%	<u>529</u>	38%	<u>255</u>	9%	<u>2,589</u>	20%
Total	1,561	5%	930	7%	674	11%	550	4%	3,715	6%
Grand Total	29,028		12,717		6,119		14,131		61,995	

* Note: Students not reporting ethnicity (Unknown) were removed from the distribution.

Unknown

First-time DS Freshmen	181	74	50	34	339
Other Undergraduate	523	1,098	144	1,167	2,932
First Professional	73	224	0	17	314
Graduate	<u>325</u>	<u>368</u>	<u>54</u>	<u>392</u>	<u>1,139</u>
Total	1,102	1,764	248	1,610	4,724