

**ENROLLMENT SUMMARY REPORT
FALL 2011**

Nino Kalatozi
Graduate Research Assistant

Office of Institutional Research & Planning
711 Lewis Hall
University of Missouri System

December 2011

IR&P 2011, Report 3

<http://www.umssystem.edu/ums/departments/fa/planning/>

FALL 2011 ENROLLMENT SUMMARY

Executive Summary

This report summarizes the status and trends in fall enrollment at the University of Missouri's four campuses. The report includes information about enrollment, full-time equivalence, new students on campus, undergraduate transfer students, full/part-time status, gender and ethnicity information.

Please note that enrollment totals in this report follow federal and state guidelines, which recommend that students who are classified as "exclusive auditors" are not included in enrollment figures. Consequently, students who are classified as "exclusive auditors" are not included in the campus totals. (Exclusive auditors are defined as students who are enrolled exclusively in courses that are not taken for credit.)

Highlights of the report include:

- The University of Missouri System enrolled a record 73,565 students in Fall 2011, 1,969 more students than the record 71,596 students that enrolled in Fall 2010. Total enrollment at the University has increased by 21% over the past 10 years (Table 1).
- In Fall 2011, the University of Missouri System enrolled 54,936 undergraduate students (75% of total headcount), 3,067 first professional students (4%), and 15,562 graduate students (21%) (Table 1).
- Over the past 10 years, undergraduate headcount has increased by 22%, first-professional headcount by 12% and graduate headcount by 19% (Table 1).
- Since 2007, total student credit hours and total full-time equivalence have both increased by 16% (Table 2.0).
- Over the past five years, total full-time resident headcount has increased 8% (Table 4.0a) and total full-time non-resident headcount has increased 41% (Table 4.0b).
- Women comprised 53% of total enrollment in Fall 2011. UM-St. Louis had the largest percentage of women (60%) and MO S&T had the highest proportion of men (78%) (Table 5).
- Of all the students of known ethnicity, under-represented minorities (American Indian/Alaskan Native, African-American, Hispanic, Pacific Islander, and Two or More Race) represented 14% of the University of Missouri System's total enrollment (Table 5).

Technical Notes

These tables provide counts of students enrolled in the fall of 2011 on-schedule credit courses at the four campuses of the University of Missouri. Five and ten-year trend data are included in the tables for comparison purposes. The data used in this report were generated from the EMSAS Fall Enrollment files, which are submitted to the Missouri Department of Higher Education (MDHE) each fall. Data included in EMSAS files were prepared in the admissions and registration offices at the respective campuses. The data are counts as of the census date at each campus, which is defined as the end of the fourth week of classes for the fall session. The source data are based on the reporting guidelines and definitions of the Missouri Department of Higher Education (MDHE) and the National Center for Educational Statistics (NCES).

Tables in the Table 2 series (2.0-2.4) include counts of on- and off-campus students. The columns titled "On-Campus", according to the MDHE guidelines, include students enrolled geographically on campus and students in the Graduate Engineering (Residence) Centers. All other students are counted in the columns headed "Off-Campus", which include students enrolled in extension courses and students that receive H.S. advanced credit from the Kansas City and St. Louis campuses. The tables of the Table 2 series also include full-time equivalence (FTE) counts.

Tables in the Table 4 series (4.0a-4.4b) include counts of resident and non-resident students by level and course load (full-time vs. part-time).

Definitions of FTE:

Undergraduate FTE = Total Student Credit Hours/15

Graduate FTE = Total Student Credit Hours/12

Dentistry FTE = Headcount

Law FTE = Total Student Credit Hours/15

UMC Medicine FTE = Headcount

UMKC Medicine FTE = Headcount

Optometry FTE = Headcount

Pharmacy FTE = Headcount

Vet Medicine FTE = Headcount

Caveats

First- and second-year students in the Medicine MD program at UMKC are included in the undergraduate counts of the Table 2 and Table 4 series.

Enrollment counts for students in "Off-Schedule" courses, which include intersession courses, short courses, Video Credit courses, and other courses which begin and end on dates other than those for the regular academic semester, are accumulated during the term in which the courses began and are reported the semester following their end date.

Figure 1: Rate of Change in Fall Headcount by Student Level and Campus, Fall 2002 to Fall 2011

UNIVERSITY OF MISSOURI SYSTEM

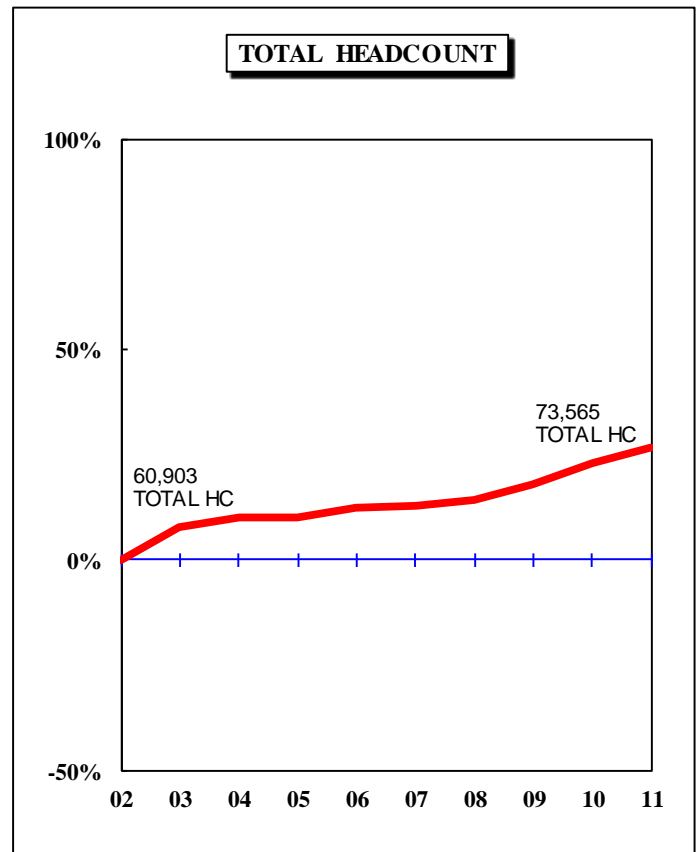
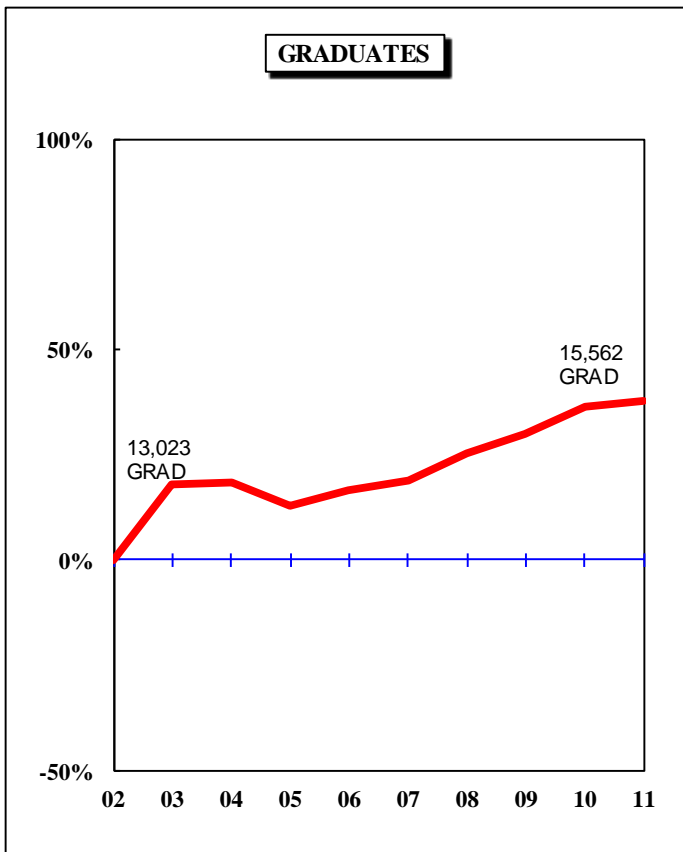
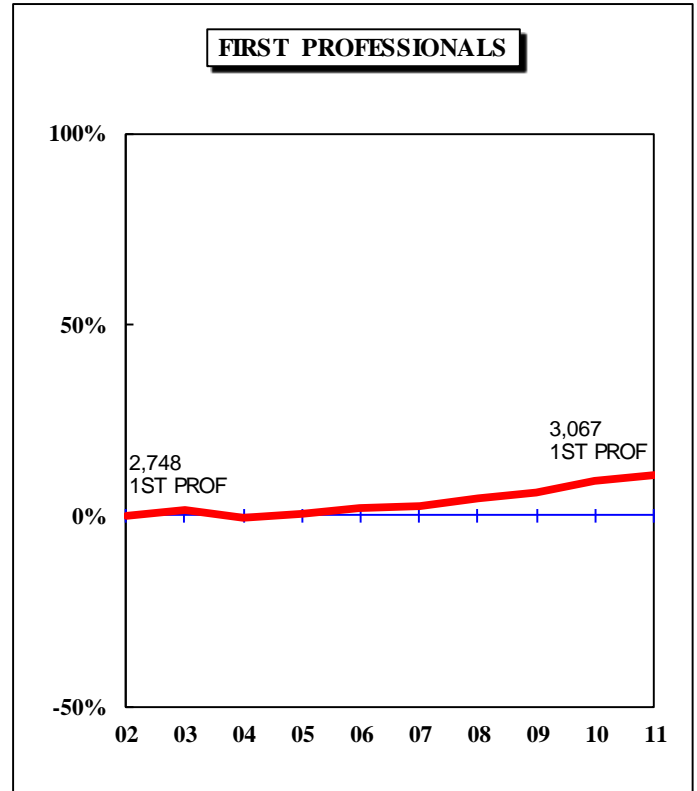
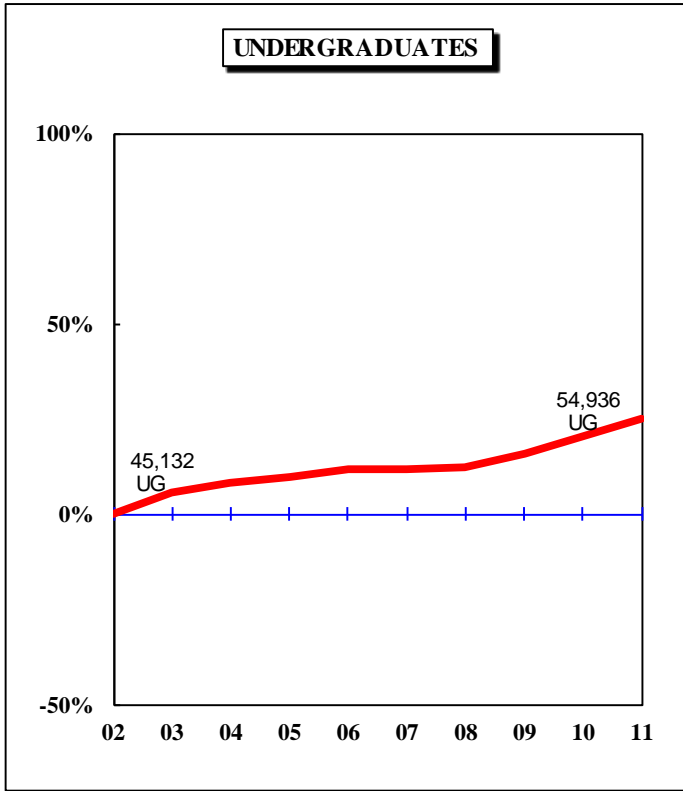


Figure 1.1: Rate of Change in Fall Headcount by Student Level and Campus, Fall 2002 to Fall 2011

UNIVERSITY OF MISSOURI-COLUMBIA

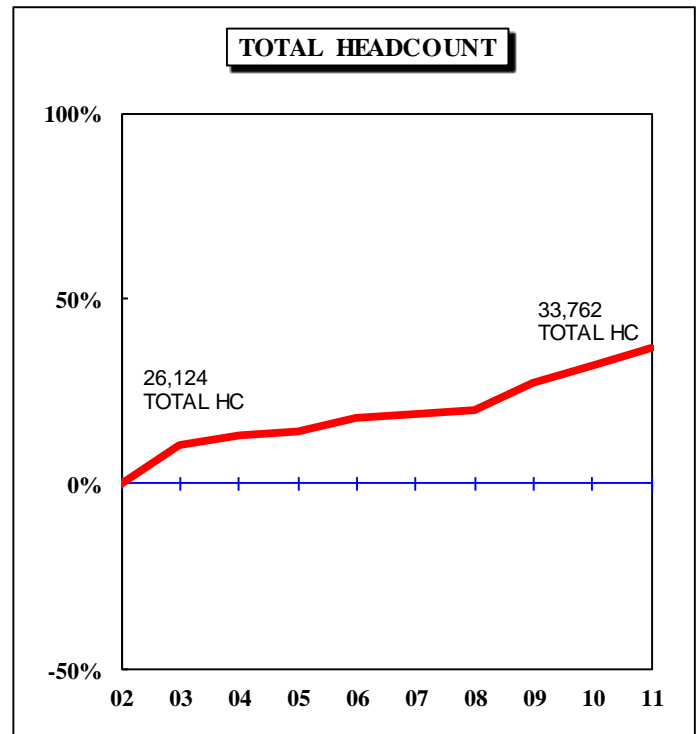
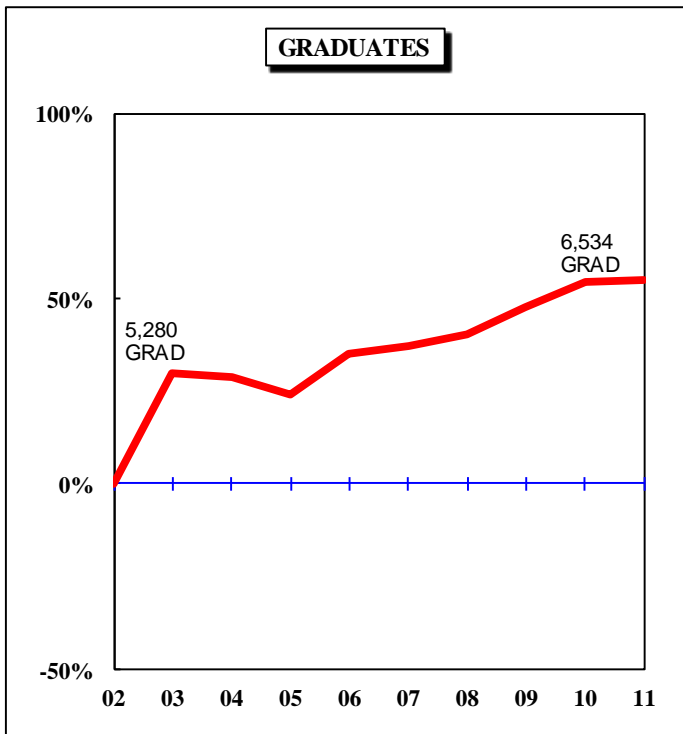
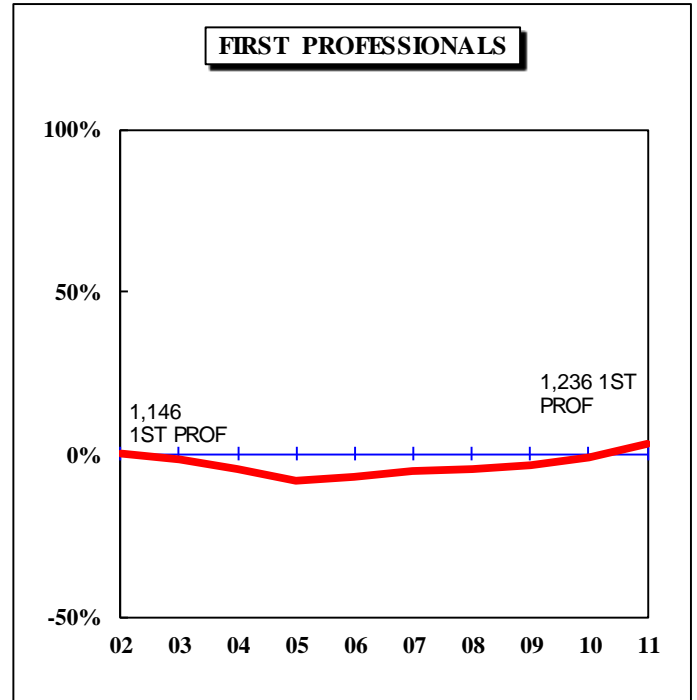
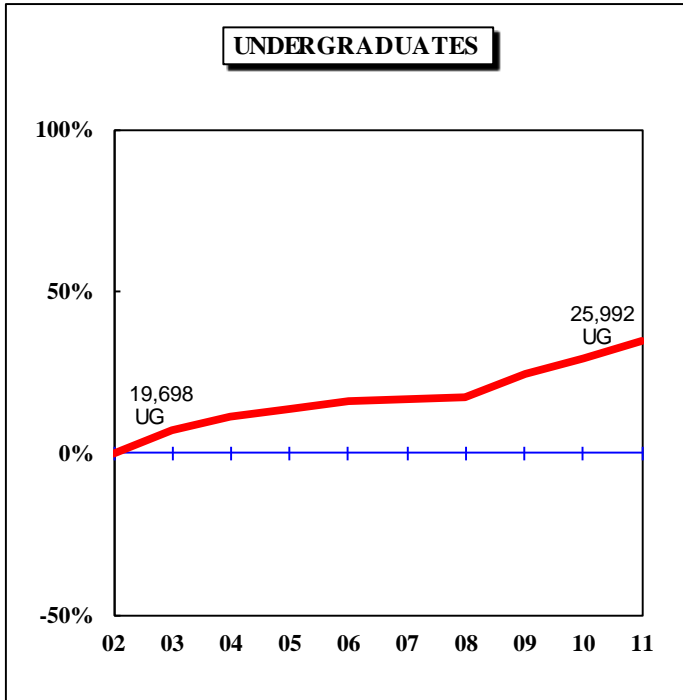


Figure 1.2: Rate of Change in Fall Headcount by Student Level and Campus, Fall 2002 to Fall 2011

UNIVERSITY OF MISSOURI-KANSAS CITY

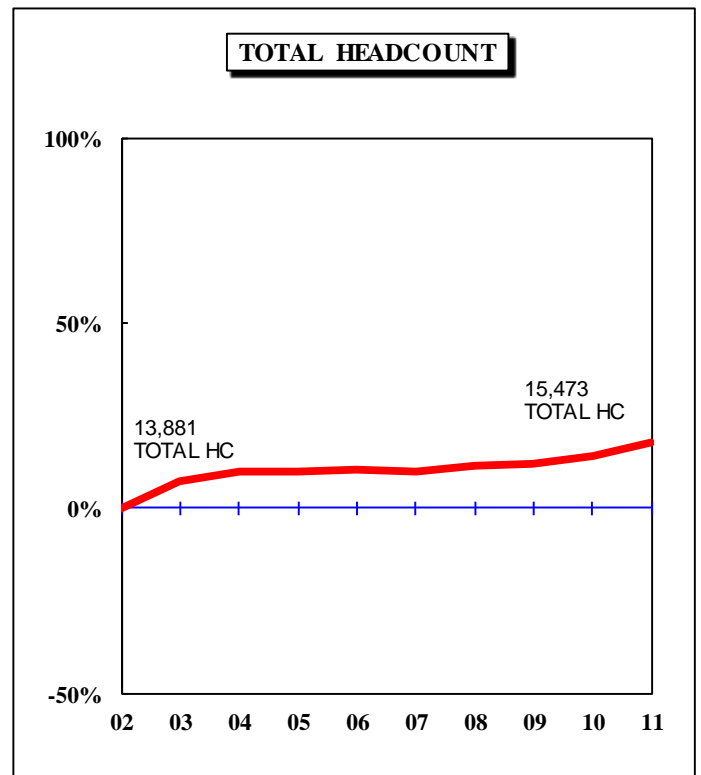
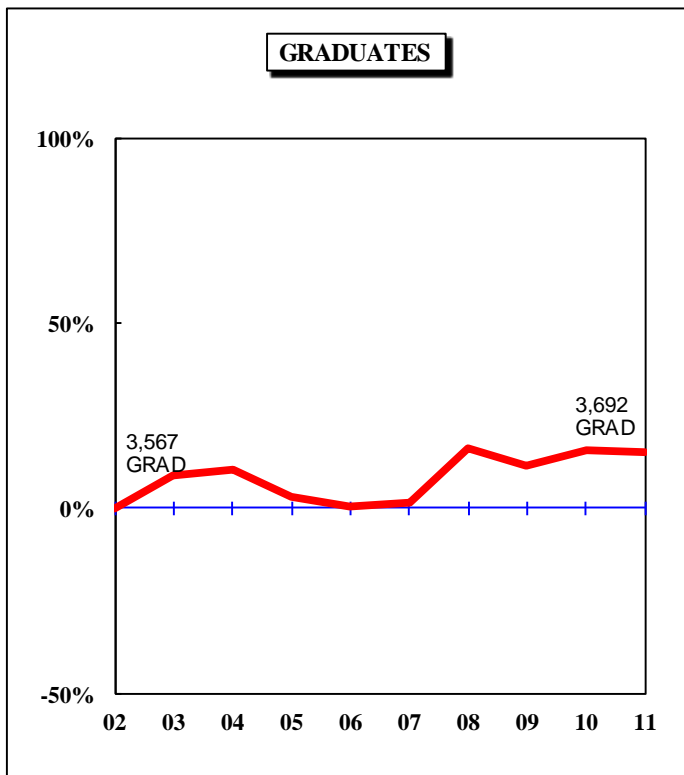
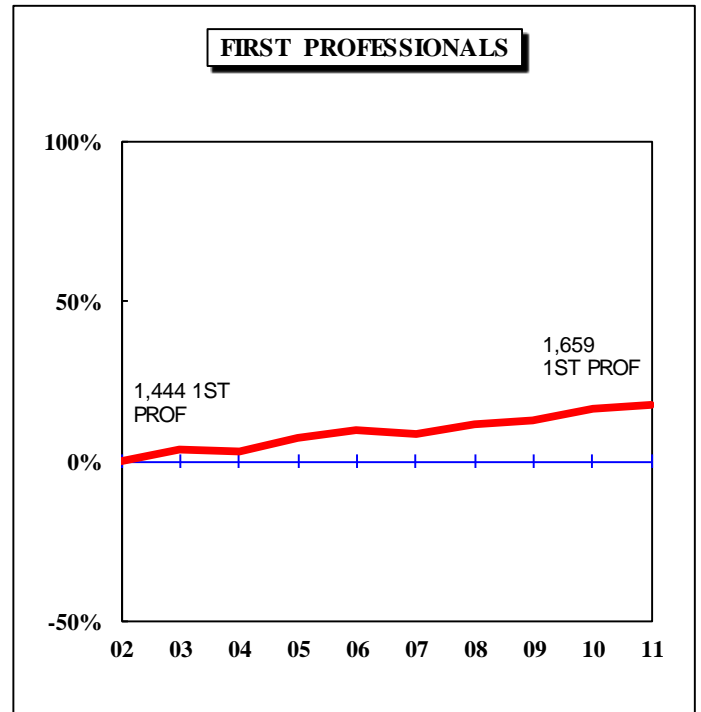
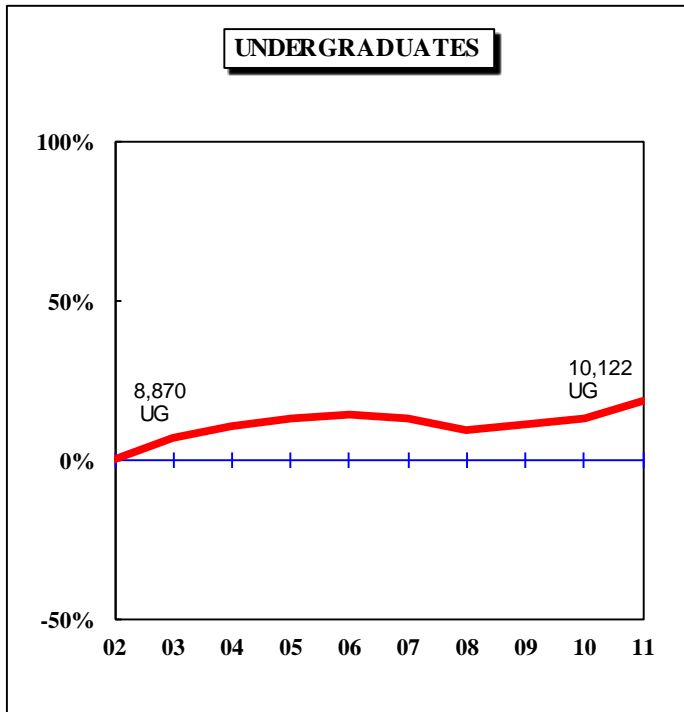


Figure 1.3: Rate of Change in Fall Headcount by Student Level and Campus, Fall 2002 to Fall 2011
MISSOURI S&T

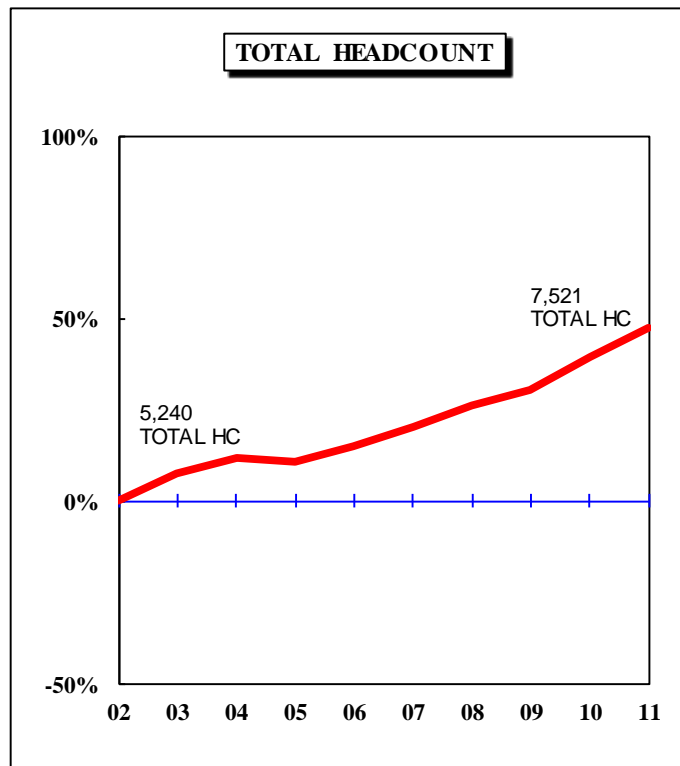
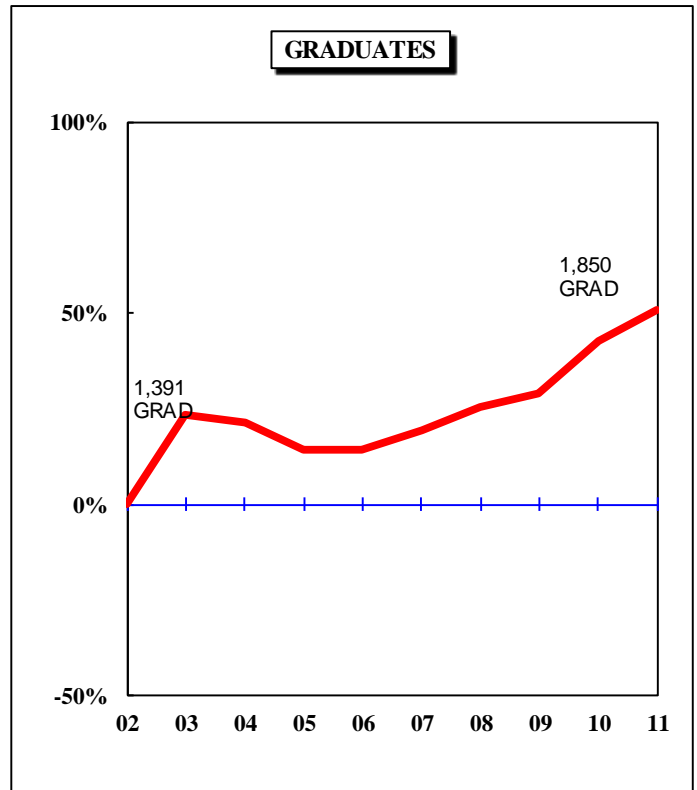
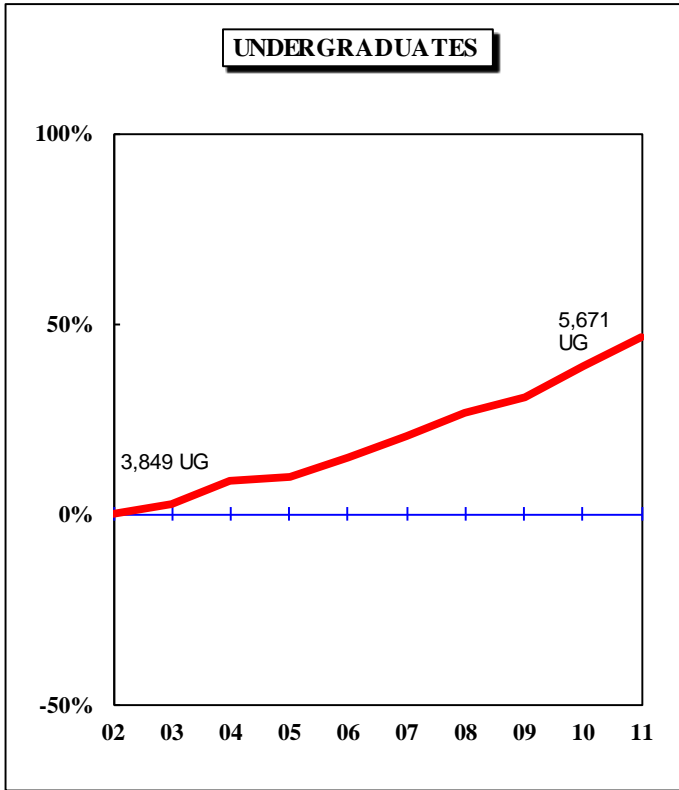


Figure 1.4: Rate of Change in Fall Headcount by Student Level and Campus, Fall 2002 to Fall 2011

UNIVERSITY OF MISSOURI-ST. LOUIS

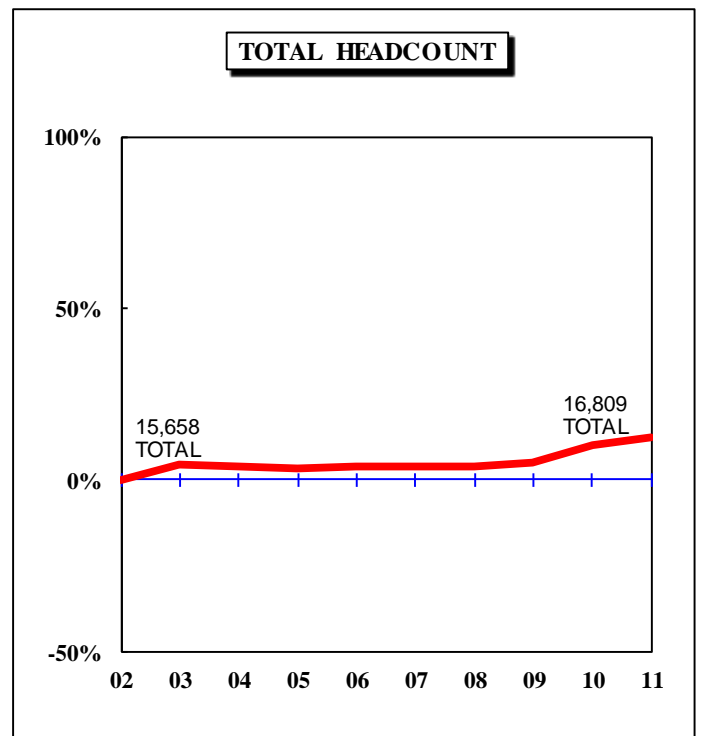
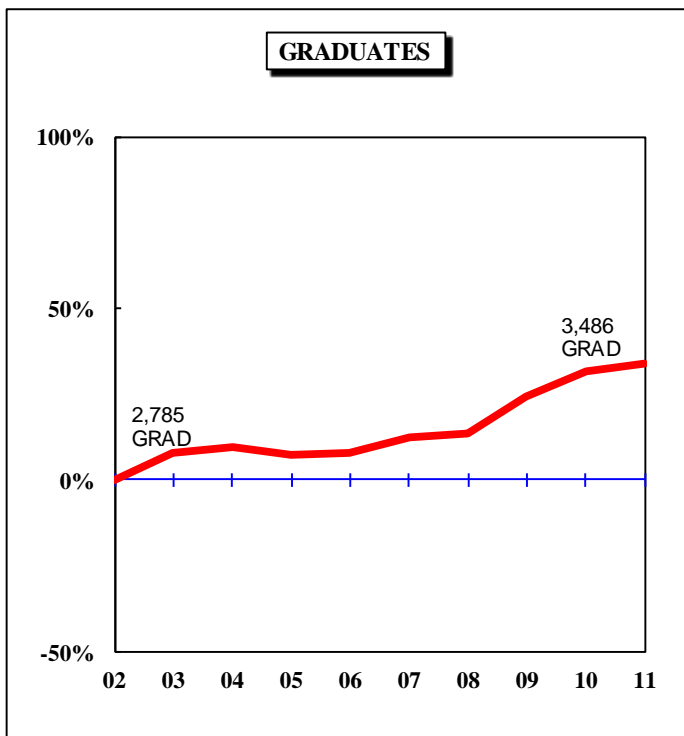
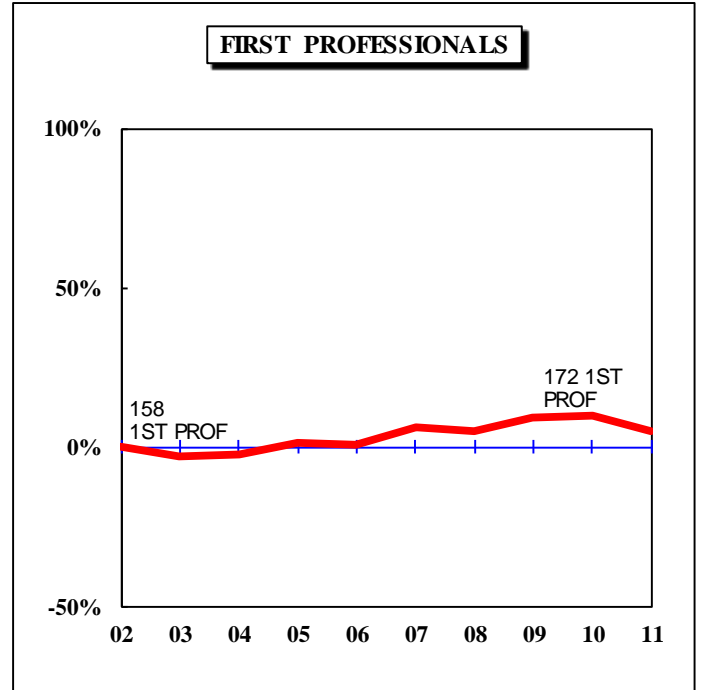
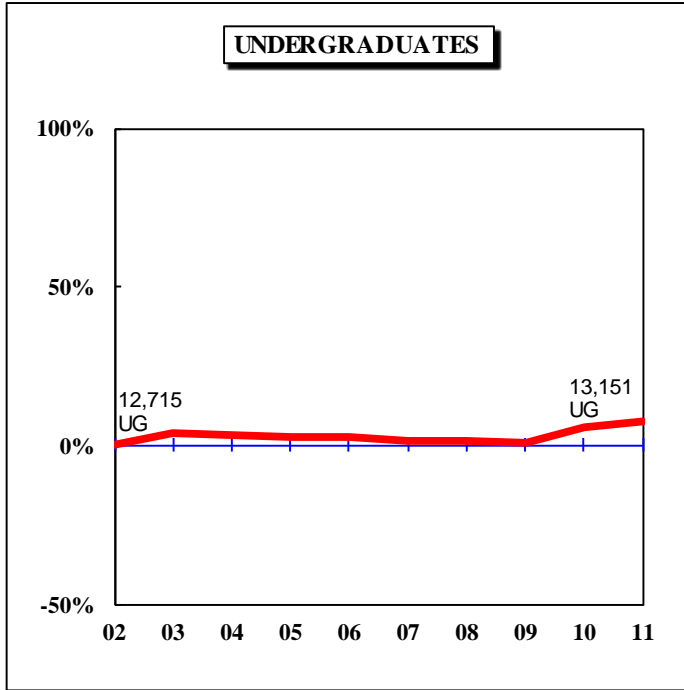
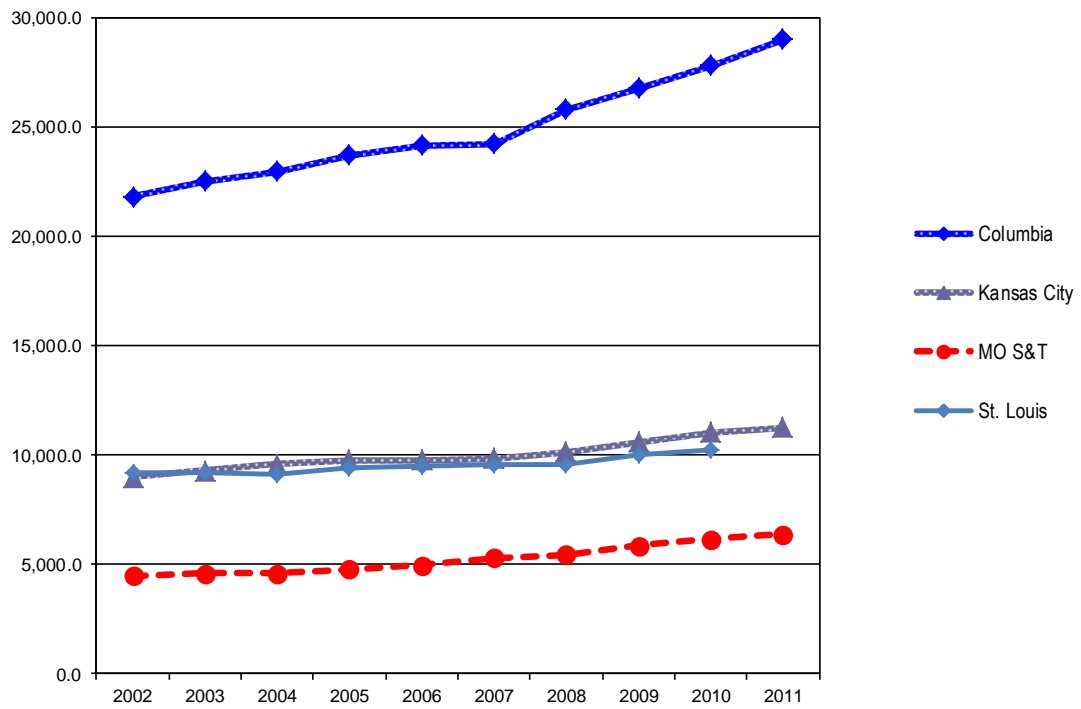


Table 1. Headcount History by Student Level and Campus, Fall 2002 to Fall 2011

Campus	Level	2002	2003	2004	2005	2006	2007	2008	2009	2010	2011	10 yr. Change
Columbia	Undergraduate	19,698	20,441	20,883	21,335	21,484	21,586	22,980	23,799	24,834	25,992	32%
	Professional	1,146	1,109	1,069	1,083	1,102	1,111	1,126	1,150	1,197	1,236	8%
	Graduate	5,280	5,255	5,051	5,512	5,598	5,708	6,024	6,288	6,310	6,534	24%
	Total	26,124	26,805	27,003	27,930	28,184	28,405	30,130	31,237	32,341	33,762	29%
Kansas City	Undergraduate	8,870	9,167	9,393	9,487	9,383	9,094	9,261	9,381	9,850	10,122	14%
	Professional	1,444	1,435	1,494	1,523	1,509	1,548	1,569	1,623	1,638	1,659	15%
	Graduate	3,567	3,624	3,369	3,296	3,321	3,800	3,651	3,795	3,771	3,692	4%
	Total*	13,881	14,226	14,256	14,306	14,213	14,442	14,481	14,799	15,259	15,473	11%
MO S&T	Undergraduate	3,849	4,089	4,119	4,311	4,515	4,752	4,911	5,206	5,503	5,671	47%
	Graduate	1,391	1,370	1,285	1,289	1,343	1,414	1,456	1,608	1,702	1,850	33%
	Total	5,240	5,459	5,404	5,600	5,858	6,166	6,367	6,814	7,205	7,521	44%
St. Louis	Undergraduate	12,715	12,624	12,572	12,606	12,459	12,432	12,358	12,966	13,171	13,151	3%
	Professional	158	159	165	164	173	171	178	179	171	172	9%
	Graduate	2,785	2,816	2,761	2,778	2,896	2,924	3,205	3,389	3,449	3,486	25%
	Total*	15,658	15,599	15,498	15,548	15,528	15,527	15,741	16,534	16,791	16,809	7%
System	Undergraduate	45,132	46,321	46,967	47,739	47,841	47,864	49,510	51,352	53,358	54,936	22%
	Professional	2,748	2,703	2,728	2,770	2,784	2,830	2,873	2,952	3,006	3,067	12%
	Graduate	13,023	13,065	12,466	12,875	13,158	13,846	14,336	15,080	15,232	15,562	19%
	Grand Total	60,903	62,089	62,161	63,384	63,783	64,540	66,719	69,384	71,596	73,565	21%

*The total enrollment for UMKC and UMSL include students taking college credit at their high school through dual credit programs. When these students are excluded from the headcount, the total enrollment for UMKC is 14,079 and the total enrollment for UMSL is 13,114.

Figure 2. Full-time Equivalence History by Campus, 2002 to 2011



Source: EMSAS Fall Enrollment file
IR&P/NK 11/17

Full-time Equivalent History by Campus, 2002 to 2011

Campus	2002	2003	2004	2005	2006	2007	2008	2009	2010	2011
Columbia	21,804.0	22,556.0	23,000.0	23,703.6	24,182.7	24,280.4	25,840.2	26,797.4	27,838.4	29,020.4
Kansas City	9,001.0	9,290.0	9,607.7	9,795.3	9,797.9	9,843.8	10,152.4	10,597.5	11,042.8	11,255.7
MO S&T	4,481.0	4,604.0	4,594.1	4,799.9	4,982.6	5,323.0	5,452.9	5,860.4	6,162.2	6,376.5
St. Louis	9,214.0	9,224.0	9,162.0	9,451.9	9,467.5	9,546.9	9,578.5	10,031.8	10,227.7	10,188.8
Total	44,500.0	45,674.0	46,363.8	47,750.7	48,430.7	48,994.0	51,023.9	53,287.1	55,271.1	56,841.4

(Totals may not add due to rounding.)

Table 2.0 Headcounts, Full-time Equivalence, and Student Credit Hours by Location, Fall 2007 to Fall 2011

University of Missouri System

	On-Campus					Off-Campus					Total					5-yr. Change
	FS07	FS08	FS09	FS10	FS11	FS07	FS08	FS09	FS10	FS11	FS07	FS08	FS09	FS10	FS11	
Headcount by Student Level																
Undergraduate																
Fresh & Soph DS	17,898	19,280	19,833	20,398	21,047	30	28	46	66	60	17,928	19,308	19,879	20,464	21,107	18%
Junior & Senior DS	23,862	23,990	25,161	26,464	27,168	222	254	283	389	505	24,084	24,244	25,444	26,853	27,673	15%
Nondegree	<u>737</u>	<u>861</u>	<u>859</u>	<u>822</u>	<u>926</u>	<u>5,115</u>	<u>5,097</u>	<u>5,170</u>	<u>5,219</u>	<u>5,230</u>	<u>5,852</u>	<u>5,958</u>	<u>6,029</u>	<u>6,041</u>	<u>6,156</u>	<u>5%</u>
Total Undergraduate	42,497	44,131	45,853	47,684	49,141	5,367	5,379	5,499	5,674	5,795	47,864	49,510	51,352	53,358	54,936	15%
First Professional																
Dentistry (DDS)	401	399	401	405	420	0	0	0	0	0	401	399	401	405	420	5%
Law (JD)	956	945	943	932	901	0	0	0	0	0	956	945	943	932	901	-6%
Medicine (MD)	759	767	769	780	798	0	0	0	0	0	759	767	769	780	798	5%
Optometry (OD)	171	178	179	171	172	0	0	0	0	0	171	178	179	171	172	1%
Pharmacy (DPharm)	238	298	339	352	283	27	0	0	0	80	265	298	339	352	363	37%
Vet. Med. (DVM)	<u>278</u>	<u>286</u>	<u>321</u>	<u>366</u>	<u>413</u>	<u>0</u>	<u>0</u>	<u>0</u>	<u>0</u>	<u>0</u>	<u>278</u>	<u>286</u>	<u>321</u>	<u>366</u>	<u>413</u>	<u>49%</u>
Total First Professional	2,803	2,873	2,952	3,006	2,987	27	0	0	0	80	2,830	2,873	2,952	3,006	3,067	8%
Graduate																
Masters & Ed. Spec.	7,544	7,629	7,907	8,150	7,975	1,571	1,802	2,156	2,053	2,330	9,115	9,431	10,063	10,203	10,305	13%
Doctoral	3,414	3,526	3,766	3,845	4,011	101	120	124	183	251	3,515	3,646	3,890	4,028	4,262	21%
Nondegree	<u>841</u>	<u>699</u>	<u>642</u>	<u>594</u>	<u>611</u>	<u>375</u>	<u>560</u>	<u>485</u>	<u>407</u>	<u>384</u>	<u>1,216</u>	<u>1,259</u>	<u>1,127</u>	<u>1,001</u>	<u>995</u>	<u>-18%</u>
Total Graduate	11,799	11,854	12,315	12,589	12,597	2,047	2,482	2,765	2,643	2,965	13,846	14,336	15,080	15,232	15,562	12%
<hr/>																
Grand Total Headcount	57,099	58,858	61,120	63,279	64,725	7,441	7,861	8,264	8,317	8,840	64,540	66,719	69,384	71,596	73,565	14%
<hr/>																
FTE Enrollments by Student Level																
Undergraduate	36,849	38,546.8	40,133.0	41,824.1	42,909.4	1,792	1,747.1	1,835.7	1,913.2	2,030.7	38,642	40,294	41,969	43,737	44,940	16%
First Professional	2,773	2,840.9	2,917.3	2,964.1	2,945.4	27	0.0	0.0	0.0	80.0	2,800	2,841	2,917	2,964	3,025	8%
Graduate	<u>6,721</u>	<u>6,875.1</u>	<u>7,204.0</u>	<u>7,447.0</u>	<u>7,574.5</u>	<u>832</u>	<u>1,014.0</u>	<u>1,197.2</u>	<u>1,122.6</u>	<u>1,301.3</u>	<u>7,553</u>	<u>7,889</u>	<u>8,401</u>	<u>8,570</u>	<u>8,876</u>	<u>18%</u>
Total FTE	46,343	48,262.8	50,254.2	52,235.2	53,429.4	2,651	2,761.1	3,032.9	3,035.8	3,412.1	48,994.1	51,023.9	53,287.1	55,271.0	56,841	16%
<hr/>																
SCH Produced by Student Level																
Undergraduate	552,740	578,202	601,995	627,362	643,641	26,885	26,207	27,536	28,699	30,461	579,625	604,409	629,531	656,061	674,102	16%
First Professional	47,791	48,067	50,808	54,568	52,211	353	0	0	0	1,489	48,144	48,067	50,808	54,568	53,700	12%
Graduate	<u>80,655</u>	<u>82,499</u>	<u>86,448</u>	<u>89,365</u>	<u>90,894</u>	<u>9,978</u>	<u>12,168</u>	<u>14,366</u>	<u>13,471</u>	<u>15,616</u>	<u>90,633</u>	<u>94,667</u>	<u>100,814</u>	<u>102,835</u>	<u>106,510</u>	<u>18%</u>
Total SCH	681,186	708,767	739,251	771,294	786,747	37,216	38,375	41,902	42,170	47,566	718,402	747,142	781,153	813,463	834,313	16%

Source: EMSAS Fall Enrollment file

Table 2.1 Headcounts, Full-time Equivalence, and Student Credit Hours by Location, Fall 2007 to Fall 2011

	Columbia										Total					5-yr. Change
	<u>On-Campus</u>					<u>Off-Campus</u>										
	FS07	FS08	FS09	FS10	FS11	FS07	FS08	FS09	FS10	FS11	FS07	FS08	FS09	FS10	FS11	
Headcount by Student Level																
Undergraduate																
Fresh & Soph DS	10,609	11,631	12,069	12,548	13,088	14	22	25	21	24	10,623	11,653	12,094	12,569	13,112	23%
Junior & Senior DS	10,637	10,827	11,247	11,811	12,304	126	168	187	222	270	10,763	10,995	11,434	12,033	12,574	17%
Nondegree	<u>180</u>	<u>229</u>	<u>200</u>	<u>166</u>	<u>233</u>	<u>20</u>	<u>103</u>	<u>71</u>	<u>66</u>	<u>73</u>	<u>200</u>	<u>332</u>	<u>271</u>	<u>232</u>	<u>306</u>	<u>53%</u>
Total Undergraduate	21,426	22,687	23,516	24,525	25,625	160	293	283	309	367	21,586	22,980	23,799	24,834	25,992	20%
First Professional																
Law (JD)	458	453	444	443	431	0	0	0	0	0	458	453	444	443	431	-6%
Medicine (MD)	375	387	385	388	392	0	0	0	0	0	375	387	385	388	392	5%
Vet. Med. (DVM)	<u>278</u>	<u>286</u>	<u>321</u>	<u>366</u>	<u>413</u>	<u>0</u>	<u>0</u>	<u>0</u>	<u>0</u>	<u>0</u>	<u>278</u>	<u>286</u>	<u>321</u>	<u>366</u>	<u>413</u>	<u>49%</u>
Total First Professional	1,111	1,126	1,150	1,197	1,236	0	0	0	0	0	1,111	1,126	1,150	1,197	1,236	11%
Graduate																
Masters & Ed. Spec.	2,192	2,261	2,243	2,287	2,408	914	962	1,238	1,190	1,126	3,106	3,223	3,481	3,477	3,534	14%
Doctoral	2,029	2,051	2,172	2,178	2,288	78	81	85	147	227	2,107	2,132	2,257	2,325	2,515	19%
Nondegree	<u>215</u>	<u>250</u>	<u>166</u>	<u>186</u>	<u>148</u>	<u>280</u>	<u>419</u>	<u>384</u>	<u>322</u>	<u>337</u>	<u>495</u>	<u>669</u>	<u>550</u>	<u>508</u>	<u>485</u>	<u>-2%</u>
Total Graduate	4,436	4,562	4,581	4,651	4,844	1,272	1,462	1,707	1,659	1,690	5,708	6,024	6,288	6,310	6,534	14%
Grand Total Headcount	26,973	28,375	29,247	30,373	31,705	1,432	1,755	1,990	1,968	2,057	28,405	30,130	31,237	32,341	33,762	19%
FTE Enrollments by Student Level																
Undergraduate	19,785.3	21,097.0	21,837.7	22,785.4	23,707.6	61.3	99.7	105.0	113.9	132.3	19,847	21,197	21,943	22,899	23,840	20%
First Professional	1,093.8	1,108.2	1,134.3	1,174.6	1,214.9	0.0	0.0	0.0	0.0	0.0	1,094	1,108	1,134	1,175	1,215	11%
Graduate	<u>2,815.4</u>	<u>2,951.1</u>	<u>2,996.1</u>	<u>3,071.5</u>	<u>3,257.0</u>	<u>524.6</u>	<u>584.3</u>	<u>724.3</u>	<u>693.0</u>	<u>708.6</u>	<u>3,340</u>	<u>3,535</u>	<u>3,720</u>	<u>3,765</u>	<u>3,966</u>	<u>19%</u>
Total FTE	23,694.5	25,156.3	25,968.2	27,031.5	28,179.5	585.9	683.9	829.3	806.9	840.9	24,280.4	25,840.2	26,797.4	27,838.4	29,020	20%
SCH Produced by Student Level																
Undergraduate	296,780	316,455	327,566	341,780.5	355,613.5	919	1,495	1,575	1,709	1,985	297,699	317,950	329,141	343,490	357,599	20%
First Professional	17,256	16,596	17,899	18,820.5	19,304.5	0	0	0	0	0	17,256	16,596	17,899	18,821	19,305	12%
Graduate	<u>33,785</u>	<u>35,413</u>	<u>35,954</u>	<u>36,858.0</u>	<u>39,084.5</u>	<u>6,295</u>	<u>7,011</u>	<u>8,691</u>	<u>8,316</u>	<u>8,503</u>	<u>40,080</u>	<u>42,424</u>	<u>44,645</u>	<u>45,174</u>	<u>47,588</u>	<u>19%</u>
Total SCH	347,821	368,463	381,418	397,459.0	414,002.5	7,214	8,506	10,266	10,025	10,488	355,035	376,969	391,684	407,484	424,491	20%

Source: EMSAS Fall Enrollment file

Table 2.2 Headcounts, Full-time Equivalence, and Student Credit Hours by Location, Fall 2007 to Fall 2011

	<u>On-Campus</u>					<u>Kansas City</u>					<u>Off-Campus</u>					<u>Total</u>					5-yr. Change
	FS07	FS08	FS09	FS10	FS11	FS07	FS08	FS09	FS10	FS11	FS07	FS08	FS09	FS10	FS11	FS07	FS08	FS09	FS10	FS11	
Headcount by Student Level																					
Undergraduate																					
Fresh & Soph DS	3,029	3,017	3,126	3,241	3,346	13	0	0	0	0	3,042	3,017	3,126	3,241	3,346	10%					
Junior & Senior DS	3,890	4,330	4,591	4,943	5,086	43	4	4	2	27	3,933	4,334	4,595	4,945	5,113	30%					
Nondegree	<u>255</u>	<u>307</u>	<u>313</u>	<u>268</u>	<u>269</u>	<u>1,864</u>	<u>1,603</u>	<u>1,347</u>	<u>1,396</u>	<u>1,394</u>	<u>2,119</u>	<u>1,910</u>	<u>1,660</u>	<u>1,664</u>	<u>1,663</u>	<u>-22%</u>					
Total Undergraduate	7,174	7,654	8,030	8,452	8,701	1,920	1,607	1,351	1,398	1,421	9,094	9,261	9,381	9,850	10,122	11%					
First Professional																					
Dentistry (DDS)	401	399	401	405	420	0	0	0	0	0	401	399	401	405	420	5%					
Law (JD)	498	492	499	489	470	0	0	0	0	0	498	492	499	489	470	-6%					
Medicine (MD)	384	380	384	392	406	0	0	0	0	0	384	380	384	392	406	<u>6%</u>					
Pharmacy (DPharm)	<u>238</u>	<u>298</u>	<u>339</u>	<u>352</u>	<u>283</u>	<u>27</u>	<u>0</u>	<u>0</u>	<u>0</u>	<u>80</u>	<u>265</u>	<u>298</u>	<u>339</u>	<u>352</u>	<u>363</u>	<u>37%</u>					
Total First Professional	1,521	1,569	1,623	1,638	1,579	27	0	0	0	80	1,548	1,569	1,623	1,638	1,659	7%					
Graduate																					
Masters & Ed. Spec.	2,623	2,670	2,801	2,890	2,709	54	53	32	3	80	2,677	2,723	2,833	2,893	2,789	4%					
Doctoral	536	624	656	664	648	0	7	0	0	0	536	631	656	664	648	21%					
Nondegree	<u>505</u>	<u>297</u>	<u>306</u>	<u>214</u>	<u>255</u>	<u>82</u>	<u>0</u>	<u>0</u>	<u>0</u>	<u>0</u>	<u>587</u>	<u>297</u>	<u>306</u>	<u>214</u>	<u>255</u>	<u>-57%</u>					
Total Graduate	3,664	3,591	3,763	3,768	3,612	136	60	32	3	80	3,800	3,651	3,795	3,771	3,692	-3%					
<hr/>																					
Grand Total Headcount	12,359	12,814	13,416	13,858	13,892	2,083	1,667	1,383	1,401	1,581	14,442	14,481	14,799	15,259	15,473	7%					
<hr/>																					
FTE Enrollments by Student Level																					
Undergraduate	5,887.2	6,272.8	6,647.9	7,047.1	7,214.4	512.7	389.3	324.5	347.5	371.3	6,400	6,662	6,972	7,395	7,586	19%					
First Professional	1,507.8	1,554.7	1,603.9	1,618.5	1,558.5	27.0	0.0	0.0	0.0	80.0	1,535	1,555	1,604	1,619	1,639	7%					
Graduate	<u>1,873.8</u>	<u>1,902.4</u>	<u>2,006.6</u>	<u>2,028.0</u>	<u>1,990.1</u>	<u>35.3</u>	<u>33.3</u>	<u>14.6</u>	<u>1.6</u>	<u>41.3</u>	<u>1,909</u>	<u>1,936</u>	<u>2,021</u>	<u>2,030</u>	<u>2,031</u>	<u>6%</u>					
Total FTE	9,268.8	9,729.9	10,258.5	10,693.6	10,763.1	575.0	422.5	339.1	349.1	492.7	9,843.8	10,152.4	10,597.5	11,042.7	11,256	14%					
<hr/>																					
SCH Produced by Student Level																					
Undergraduate	88,308	94,092	99,719	105,707	108,216	7,691	5,839	4,867	5,213	5,570	95,999	99,931	104,586	110,920	113,786	19%					
First Professional	27,029	27,906	29,239	32,192	29,433	353	0	0	0	1,489	27,382	27,906	29,239	32,192	30,922	13%					
Graduate	<u>22,486</u>	<u>22,829</u>	<u>24,080</u>	<u>24,337</u>	<u>23,881</u>	<u>423</u>	<u>399</u>	<u>175</u>	<u>19</u>	<u>496</u>	<u>22,909</u>	<u>23,228</u>	<u>24,255</u>	<u>24,356</u>	<u>24,377</u>	<u>6%</u>					
Total SCH	137,823	144,827	153,037	162,236	161,530	8,467	6,238	5,042	5,232	7,555	146,290	151,065	158,079	167,468	169,085	16%					

Source: EMSAS Fall Enrollment file

Table 2.3 Headcounts, Full-time Equivalence, and Student Credit Hours by Location, Fall 2007 to Fall 2011

	Missouri S&T															5-yr. Change
	<u>On-Campus</u>					<u>Off-Campus</u>					<u>Total</u>					
	FS07	FS08	FS09	FS10	FS11	FS07	FS08	FS09	FS10	FS11	FS07	FS08	FS09	FS10	FS11	
Headcount by Student Level																
Undergraduate																
Fresh & Soph DS	2,127	2,180	2,291	2,347	2,298	0	0	13	42	29	2,127	2,180	2,304	2,389	2,327	9%
Junior & Senior DS	2,578	2,693	2,829	2,994	3,154	0	2	12	74	123	2,578	2,695	2,841	3,068	3,277	27%
Nondegree	<u>35</u>	<u>24</u>	<u>36</u>	<u>39</u>	<u>48</u>	<u>12</u>	<u>12</u>	<u>25</u>	<u>7</u>	<u>19</u>	<u>47</u>	<u>36</u>	<u>61</u>	<u>46</u>	<u>67</u>	<u>43%</u>
Total Undergraduate	4,740	4,897	5,156	5,380	5,500	12	14	50	123	171	4,752	4,911	5,206	5,503	5,671	19%
Graduate																
Masters & Ed. Spec.	557	523	593	686	651	502	547	575	530	659	1,059	1,070	1,168	1,216	1,310	24%
Doctoral	331	345	401	440	504	13	19	23	26	24	344	364	424	466	528	53%
Nondegree	<u>8</u>	<u>2</u>	<u>3</u>	<u>13</u>	<u>3</u>	<u>3</u>	<u>20</u>	<u>13</u>	<u>7</u>	<u>9</u>	<u>11</u>	<u>22</u>	<u>16</u>	<u>20</u>	<u>12</u>	<u>9%</u>
Total Graduate	896	870	997	1,139	1,158	518	586	611	563	692	1,414	1,456	1,608	1,702	1,850	31%
Grand Total Headcount	5,636	5,767	6,153	6,519	6,658	530	600	661	686	863	6,166	6,367	6,814	7,205	7,521	22%
FTE Enrollments by Student Level																
Undergraduate	4,480.5	4,618.8	4,867.6	5,068.1	5,139.7	2.7	2.9	13.9	58.4	96.1	4,483	4,622	4,882	5,127	5,236	17%
Graduate	<u>611.1</u>	<u>587.8</u>	<u>703.0</u>	<u>796.9</u>	<u>809.0</u>	<u>228.7</u>	<u>243.4</u>	<u>275.9</u>	<u>238.8</u>	<u>331.6</u>	<u>840</u>	<u>831</u>	<u>979</u>	<u>1,036</u>	<u>1,141</u>	<u>36%</u>
Total FTE	5,091.6	5,206.6	5,570.6	5,865.0	5,948.7	231.4	246.3	289.9	297.2	427.7	5,323.0	5,452.9	5,860.4	6,162.2	6,376.5	20%
SCH Produced by Student Level																
Undergraduate	67,208	69,282	73,014	76,021	77,096	40	43	209	876	1,442	67,248	69,325	73,223	76,897	78,538	17%
Graduate	<u>7,333</u>	<u>7,054</u>	<u>8,436</u>	<u>9,563</u>	<u>9,709</u>	<u>2,744</u>	<u>2,921</u>	<u>3,311</u>	<u>2,866</u>	<u>3,979</u>	<u>10,077</u>	<u>9,975</u>	<u>11,747</u>	<u>12,429</u>	<u>13,688</u>	<u>36%</u>
Total SCH	74,541	76,336	81,450	85,584	86,804	2,784	2,964	3,520	3,742	5,421	77,325	79,300	84,970	89,326	92,225	19%

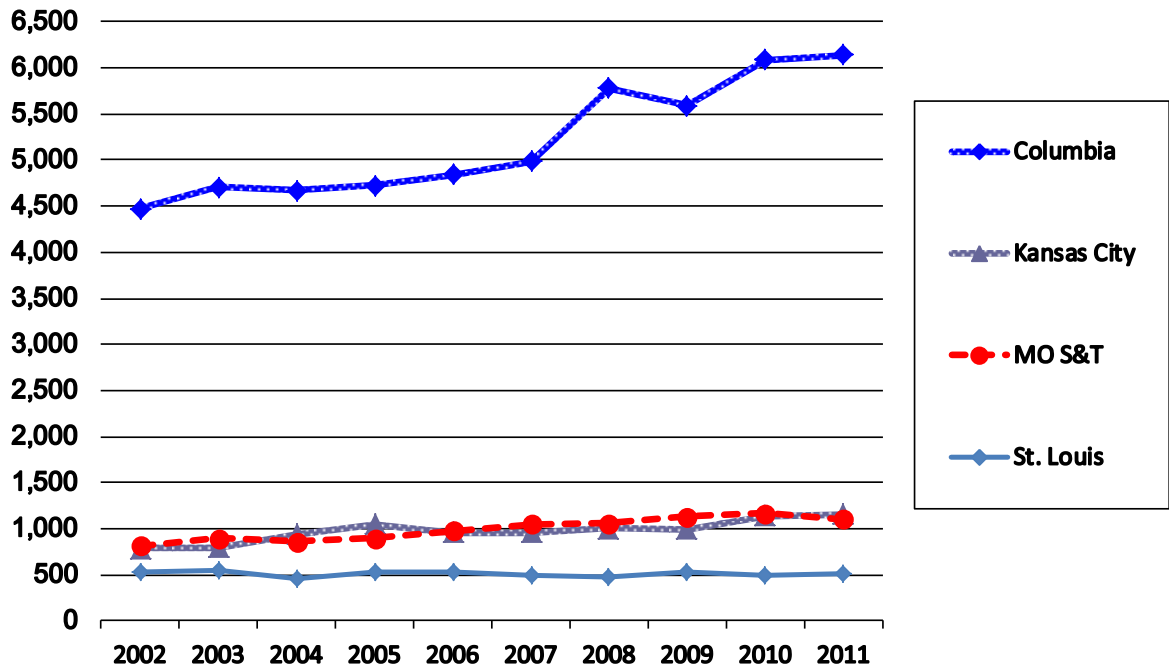
Source: EMSAS Fall Enrollment file

Table 2.4 Headcounts, Full-time Equivalence, and Student Credit Hours by Location, Fall 2007 to Fall 2011

	<u>On-Campus</u>					<u>St. Louis</u>					<u>Off-Campus</u>					<u>Total</u>					5-yr. Change
	FS07	FS08	FS09	FS10	FS11	FS07	FS08	FS09	FS10	FS11	FS07	FS08	FS09	FS10	FS11	FS07	FS08	FS09	FS10	FS11	
Headcount by Student Level																					
Undergraduate																					
Fresh & Soph DS	2,133	2,452	2,347	2,262	2,315	3	6	8	3	7	2,136	2,458	2,355	2,265	2,322	9%					
Junior & Senior DS	6,757	6,140	6,494	6,716	6,624	53	80	80	91	85	6,810	6,220	6,574	6,807	6,709	-1%					
Nondegree	<u>267</u>	<u>301</u>	<u>310</u>	<u>349</u>	<u>376</u>	<u>3,219</u>	<u>3,379</u>	<u>3,727</u>	<u>3,750</u>	<u>3,744</u>	<u>3,486</u>	<u>3,680</u>	<u>4,037</u>	<u>4,099</u>	<u>4,120</u>	<u>18%</u>					
Total Undergraduate	9,157	8,893	9,151	9,327	9,315	3,275	3,465	3,815	3,844	3,836	12,432	12,358	12,966	13,171	13,151	6%					
First Professional																					
Optometry (OD)	<u>171</u>	<u>178</u>	<u>179</u>	<u>171</u>	<u>172</u>	<u>0</u>	<u>0</u>	<u>0</u>	<u>0</u>	<u>0</u>	<u>171</u>	<u>178</u>	<u>179</u>	<u>171</u>	<u>172</u>	<u>1%</u>					
Total First Professional	171	178	179	171	172	0	0	0	0	0	171	178	179	171	172	1%					
Graduate																					
Masters & Ed. Spec.	2,172	2,175	2,270	2,287	2,207	101	240	311	330	465	2,273	2,415	2,581	2,617	2,672	18%					
Doctoral	518	506	537	563	571	10	13	16	10	0	528	519	553	573	571	8%					
Nondegree	<u>113</u>	<u>150</u>	<u>167</u>	<u>181</u>	<u>205</u>	<u>10</u>	<u>121</u>	<u>88</u>	<u>78</u>	<u>38</u>	<u>123</u>	<u>271</u>	<u>255</u>	<u>259</u>	<u>243</u>	<u>98%</u>					
Total Graduate	2,803	2,831	2,974	3,031	2,983	121	374	415	418	503	2,924	3,205	3,389	3,449	3,486	19%					
<hr/>																					
Grand Total Headcount	12,131	11,902	12,304	12,529	12,470	3,396	3,839	4,230	4,262	4,339	15,527	15,741	16,534	16,791	16,809	8%					
<hr/>																					
FTE Enrollments by Student Level																					
Undergraduate	6,696.3	6,558.2	6,779.8	6,923.5	6,847.7	1,215.7	1,255.3	1,392.3	1,393.4	1,430.9	7,912	7,814	8,172	8,317	8,279	5%					
First Professional	171.0	178.0	179.0	171.0	172.0	0.0	0.0	0.0	0.0	0.0	171	178	179	171	172	1%					
Graduate	<u>1,420.9</u>	<u>1,433.8</u>	<u>1,498.2</u>	<u>1,550.6</u>	<u>1,518.3</u>	<u>43.0</u>	<u>153.1</u>	<u>182.4</u>	<u>189.2</u>	<u>219.8</u>	<u>1,464</u>	<u>1,587</u>	<u>1,681</u>	<u>1,740</u>	<u>1,738</u>	<u>19%</u>					
Total FTE	8,288.2	8,170.0	8,457.0	8,645.1	8,538.1	1,258.7	1,408.4	1,574.7	1,582.6	1,650.8	9,546.9	9,578.4	10,031.8	10,227.7	10,188.8	7%					
<hr/>																					
SCH Produced by Student Level																					
Undergraduate	100,444	98,373	101,697	103,853	102,716	18,235	18,830	20,885	20,901	21,464	118,679	117,203	122,582	124,754	124,180	5%					
First Professional	3,506	3,566	3,671	3,555	3,474	0	0	0	0	0	3,506	3,566	3,671	3,555	3,474	-1%					
Graduate	<u>17,051</u>	<u>17,203</u>	<u>17,979</u>	<u>18,608</u>	<u>18,220</u>	<u>516</u>	<u>1,837</u>	<u>2,189</u>	<u>2,270</u>	<u>2,638</u>	<u>17,567</u>	<u>19,040</u>	<u>20,168</u>	<u>20,878</u>	<u>20,858</u>	<u>19%</u>					
Total SCH	121,001	119,142	123,347	126,016	124,410	18,751	20,667	23,074	23,171	24,102	139,752	139,809	146,421	149,187	148,512	6%					

Source: EMSAS Fall Enrollment file

Figure 3a. First-time College Freshmen History, 2002 to 2011

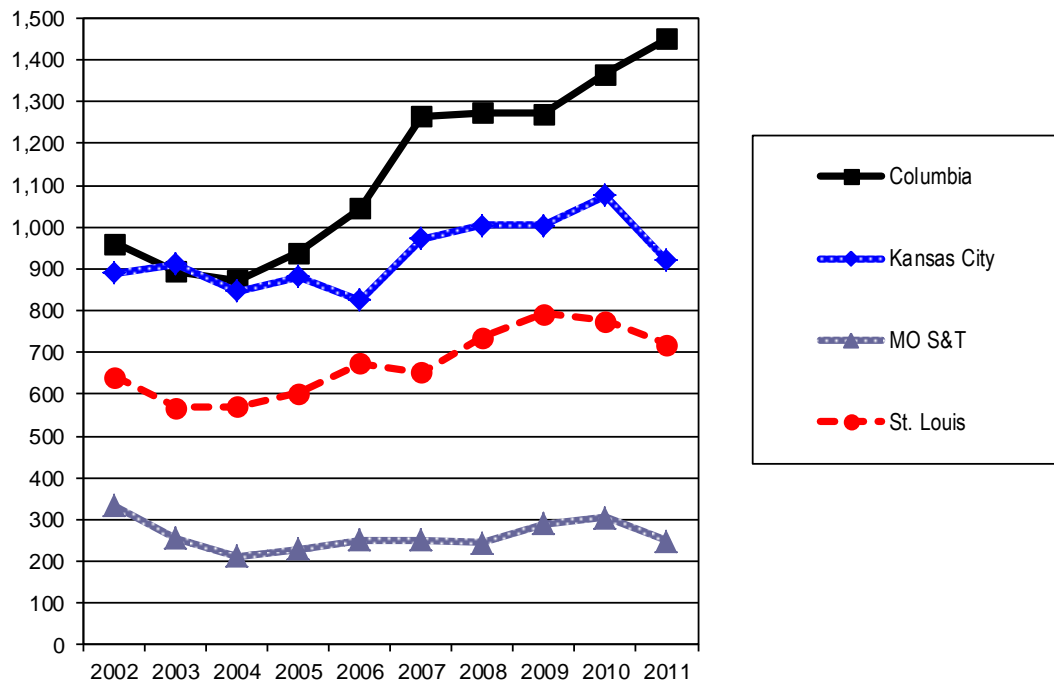


Source: EMSAS Fall Enrollment file
IR&P/NK 11/17

First-time College Freshmen History by Campus, 2002 to 2011

Campus	2002	2003	2004	2005	2006	2007	2008	2009	2010	2011
Columbia	4,468	4,702	4,673	4,720	4,842	4,981	5,780	5,589	6,087	6,137
Kansas City	790	799	939	1,048	959	959	1,008	1,007	1,147	1,161
MO S&T	815	897	856	892	977	1,050	1,055	1,132	1,170	1,101
St. Louis	533	542	451	536	530	502	468	527	502	508
Total	6,606	6,940	6,919	7,196	7,308	7,492	8,311	8,255	8,906	8,907

Figure 3b. New Graduate Student History by Campus, 2002 to 2011

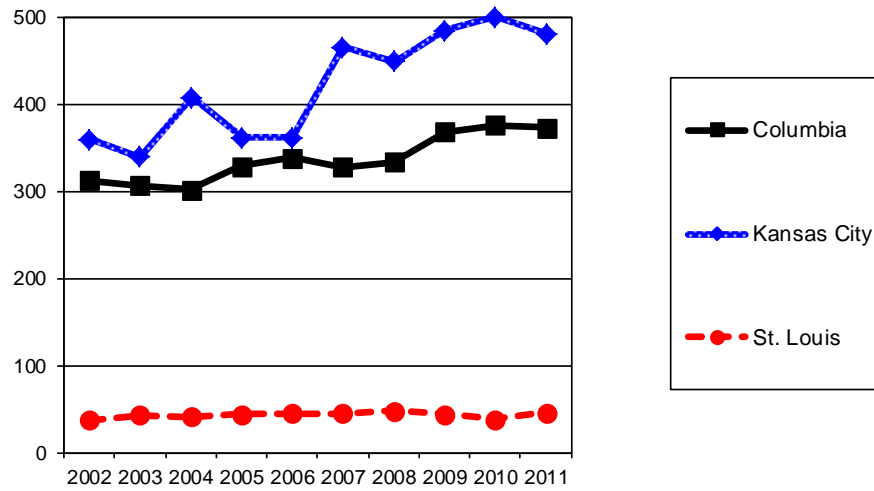


Source: EMSAS Fall Enrollment file
IR&P/NK 11/17

New Graduate Student History by Campus, 2002 to 2011

Campus	2002	2003	2004	2005	2006	2007	2008	2009	2010	2011
Columbia	962	894	873	939	1,046	1,266	1,274	1,272	1,367	1,452
Kansas City	892	911	848	882	826	973	1,005	1,005	1,076	922
MO S&T	332	254	212	228	251	250	245	290	305	248
St. Louis	641	568	570	603	674	652	736	792	775	720
Total	2,827	2,627	2,503	2,652	2,797	3,141	3,260	3,359	3,523	3,342

Figure 3c. New First Professional Student History by Campus, 2002 to 2011



Source: EMSAS Fall Enrollment file
IR&P/NK 11/17

New First Professional Student History By Campus, 2002 to 2011

Campus	2002	2003	2004	2005	2006	2007	2008	2009	2010	2011
Columbia	312	307	302	329	338	328	334	368	376	373
Kansas City	359	339	408	361	361	465	449	485	500	481
St. Louis	37	43	41	44	45	45	48	44	38	46
Total	708	689	751	734	744	838	831	897	914	900

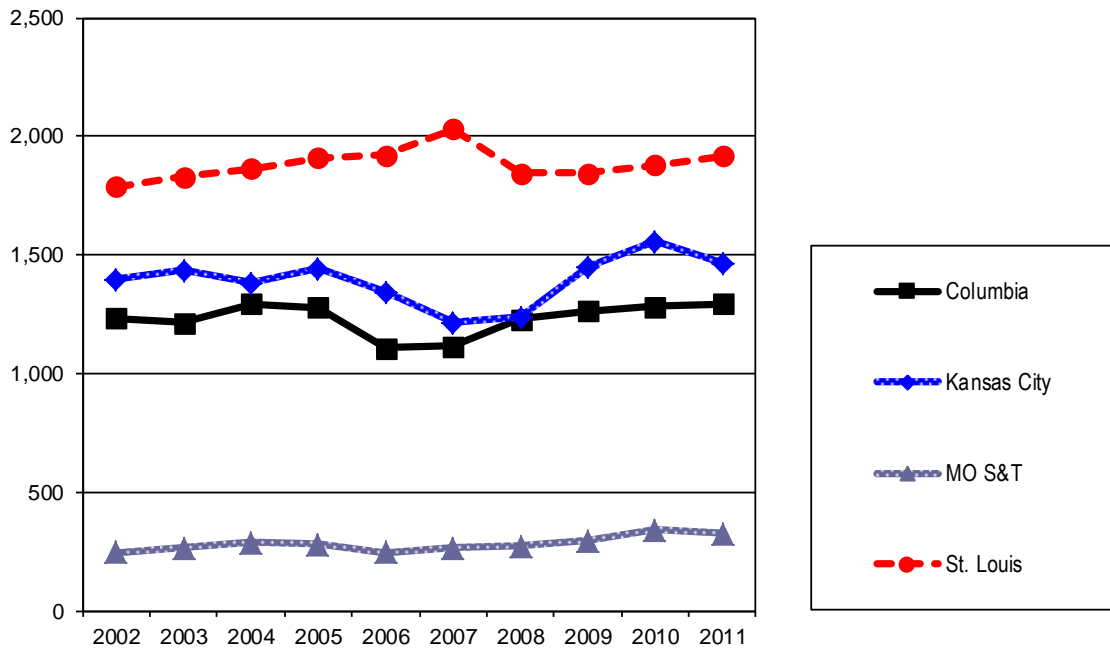
Table 3. On-Campus New Student Headcount, Fall 2007 - Fall 2011

		2007	2008	2009	2010	2011	5 yr.
Columbia							
Freshmen							
	Degree-Seeking	4,980	5,780	5,589	6,087	6,137	23%
	Non Degree-Seeking	1	0	0	0	0	-100%
Undergraduate Transfers							
	Degree-Seeking	986	1,077	1,108	1,159	1,261	28%
	Non Degree-Seeking	130	153	157	123	33	-75%
Professional							
	Degree-Seeking	328	334	368	376	373	14%
Graduate							
	Degree-Seeking	1,142	1,167	1,169	1,248	1,353	18%
	Non Degree-Seeking	124	107	103	119	99	-20%
Kansas City							
Freshmen							
	Degree-Seeking	959	1,008	1,004	1,145	1,159	21%
	Non Degree-Seeking	0	0	3	2	2	
Undergraduate Transfers							
	Degree-Seeking	1,192	1,238	1,449	1,554	1,462	23%
	Non Degree-Seeking	22	0	1	2	0	-100%
Professional							
	Degree-Seeking	462	447	481	500	481	4%
	Non Degree-Seeking	3	2	4	0	0	-100%
Graduate							
	Degree-Seeking	973	1,005	1,004	1,076	922	-5%
	Non Degree-Seeking	0	0	1	0	0	
Missouri S&T							
Freshmen							
	Degree-Seeking	1,041	1,045	1,108	1,149	1,096	5%
	Non Degree-Seeking	9	10	24	21	5	-44%
Undergraduate Transfers							
	Degree-Seeking	264	272	292	341	326	23%
	Non Degree-Seeking	0	2	1	1	0	
Graduate							
	Degree-Seeking	243	244	289	296	247	2%
	Non Degree-Seeking	7	1	1	9	1	-86%
St Louis							
Freshmen							
	Degree-Seeking	498	468	525	497	504	1%
	Non Degree-Seeking	4	11	2	5	4	0%
Undergraduate Transfers							
	Degree-Seeking	1,852	1,667	1,673	1,696	1,726	-7%
	Non Degree-Seeking	180	179	172	185	193	7%
Professional							
	Degree-Seeking	45	48	44	38	46	2%
Graduate							
	Degree-Seeking	583	685	750	721	670	15%
	Non Degree-Seeking	69	51	42	54	50	-28%

Source: EMSAS Fall Enrollment file

IR&P/NK 11/17

Figure 4. First-time On-Campus Undergraduate Transfer Student History by Campus, 2002 to 2011



Source: EMSAS Fall Enrollment file
IR&P/NK 11/17

First-time On-Campus Undergraduate Transfer Student History by Campus, 2002 to 2011

Campus	2002	2003	2004	2005	2006	2007	2008	2009	2010	2011
Columbia	1,234	1,215	1,295	1,281	1,108	1,116	1,230	1,265	1,282	1,294
Kansas City	1,399	1,432	1,382	1,443	1,343	1,214	1,238	1,450	1,556	1,462
MO S&T	247	263	287	278	252	264	274	293	342	326
St. Louis	1,787	1,829	1,863	1,912	1,922	2,032	1,846	1,845	1,881	1,919
Total	4,667	4,739	4,827	4,914	4,625	4,626	4,588	4,853	5,061	5,001

Table 4.0a Resident Headcount History by Student Level, Load, and Campus, Fall 2007 to Fall 2011

Level	2007	2008	2009	2010	2011	5 yr. Change
UNIVERSITY OF MISSOURI SYSTEM FULL-TIME RESIDENT HEADCOUNT						
Undergraduate						
Freshman & Soph DS	13,504	14,380	14,514	14,609	14,856	10%
Junior & Senior DS	16,378	16,556	17,441	18,223	18,419	12%
Nondegree	138	130	126	151	157	14%
Total System Full-time Resident Undergraduate	30,020	31,066	32,081	32,983	33,432	11%
First Professional						
Dentistry (DDS)	265	276	286	298	308	16%
Law (JD)	771	776	797	755	732	-5%
Medicine (MD)	641	652	649	633	644	0%
Optometry (OD)	86	89	86	74	65	-24%
Pharmacy (Dpharm)	252	278	320	327	335	33%
Vet. Med (DVM)	255	259	264	301	344	35%
Total System Full-time Resident 1st Professional	2,270	2,330	2,402	2,388	744	-67%
Graduate						
Masters & Ed. Spec.	2,051	2,036	2,311	2,377	2,308	13%
Doctoral	489	501	544	996	1,013	107%
Nondegree	47	51	68	57	57	21%
Total System Full-time Resident Graduate	2,587	2,588	2,923	3,430	3,378	31%
Total System Full-time Resident Headcount	34,877	35,984	37,406	38,801	37,554	8%
UNIVERSITY OF MISSOURI SYSTEM PART-TIME RESIDENT HEADCOUNT						
Undergraduate						
Freshman & Soph DS	1,012	1,083	1,059	992	1,050	4%
Junior & Senior DS	4,307	4,142	4,266	4,518	4,701	9%
Nondegree	5,483	5,477	5,568	5,547	5,592	2%
Total System Part-time Resident Undergraduate	10,802	10,702	10,893	11,057	11,343	5%
First Professional						
Law (JD)	40	33	26	35	35	-13%
Medicine (MD)	0	0	0	0	0	-
Vet. Med (DVM)	0	0	0	0	0	-
Total System Part-time Resident 1st Professional	40	33	26	35	35	-13%
Graduate						
Masters & Ed. Spec.	3,790	3,953	4,164	4,222	4,106	8%
Doctoral	1,180	1,197	1,254	835	892	-24%
Nondegree	945	905	825	689	701	-26%
Total System Part-time Resident Graduate	5,915	6,055	6,243	5,746	5,699	-4%
Total System Part-time Resident Headcount	16,757	16,790	17,162	16,838	17,077	2%
UNIVERSITY OF MISSOURI SYSTEM TOTAL RESIDENT HEADCOUNT						
Undergraduate						
Freshman & Soph DS	14,516	15,463	15,573	15,601	15,906	10%
Junior & Senior DS	20,685	20,698	21,707	22,741	23,120	12%
Nondegree	5,621	5,607	5,694	5,698	5,749	2%
Total System Resident Undergraduate	40,822	41,768	42,974	44,040	44,775	10%
First Professional						
Dentistry (DDS)	265	276	286	298	308	16%
Law (JD)	811	809	823	790	767	-5%
Medicine (MD)	641	652	649	633	644	0%
Optometry (OD)	86	89	86	74	65	-24%
Pharmacy (Dpharm)	252	278	320	327	335	33%
Vet. Med (DVM)	255	259	264	301	344	35%
Total System Resident 1st Professional	2,310	2,363	2,428	2,423	2,463	7%
Graduate						
Masters & Ed. Spec.	5,841	5,989	6,475	6,599	6,414	10%
Doctoral	1,669	1,698	1,798	1,831	1,905	14%
Nondegree	992	956	893	746	758	-24%
Total System Resident Graduate	8,502	8,643	9,166	9,176	9,077	7%
Grand Total System Resident Headcount	51,634	52,774	54,568	55,639	56,315	9%

Table 4.0b Non-Resident Headcount History by Student Level, Load, and Campus, Fall 2007 to Fall 2011

Level	2007	2008	2009	2010	2011	5 yr. Change
UNIVERSITY OF MISSOURI SYSTEM FULL-TIME NON-RESIDENT HEADCOUNT						
Undergraduate						
Freshman & Soph DS	3,191	3,649	4,119	4,629	4,928	54%
Junior & Senior DS	2,817	2,954	3,128	3,469	3,819	36%
Nondegree	111	151	142	168	241	117%
Total System Full-time Non-Resident Undergraduate	6,119	6,754	7,389	8,266	8,988	47%
First Professional						
Dentistry (DDS)	136	123	115	107	112	-18%
Law (JD)	137	126	112	136	127	-7%
Medicine (MD)	118	115	120	147	154	31%
Optometry (OD)	85	89	93	97	107	26%
Pharmacy (Dpharm)	13	20	19	25	28	115%
Vet. Med (DVM)	23	27	57	65	69	200%
Total System Full-time Non-Resident 1st Professional	512	500	516	577	597	17%
Graduate						
Masters & Ed. Spec.	1,777	1,774	1,875	1,770	1,943	9%
Doctoral	982	1,108	1,208	1,597	1,695	73%
Nondegree	28	37	31	41	36	29%
Total System Full-time Non-Resident Graduate	2,787	2,919	3,114	3,408	3,674	32%
Total System Full-time Non-Resident Headcount	9,418	10,173	11,019	12,251	13,259	41%
UNIVERSITY OF MISSOURI SYSTEM PART-TIME NON-RESIDENT HEADCOUNT						
Undergraduate						
Freshman & Soph DS	221	195	187	234	273	24%
Junior & Senior DS	582	592	609	643	734	26%
Nondegree	120	201	193	175	166	38%
Total System Part-time Non-Resident Undergraduate	923	988	989	1,052	1,173	27%
First Professional						
Law (JD)	8	10	8	6	7	-13%
Medicine (MD)	0	0	0	0	0	-
Total System Part-time Non-Resident 1st Professional	8	10	8	6	7	-13%
Graduate						
Masters & Ed. Spec.	1,497	1,668	1,713	1,834	1,948	30%
Doctoral	864	840	884	600	662	-23%
Nondegree	196	266	203	214	201	3%
Total System Part-time Non-Resident Graduate	2,557	2,774	2,800	2,648	2,811	10%
Total System Part-time Non-Resident Headcount	3,488	3,772	3,797	3,706	3,991	14%
UNIVERSITY OF MISSOURI SYSTEM TOTAL NON-RESIDENT HEADCOUNT						
Undergraduate						
Freshman & Soph DS	3,412	3,844	4,306	4,863	5,201	52%
Junior & Senior DS	3,399	3,546	3,737	4,112	4,553	34%
Nondegree	231	352	335	343	407	76%
Total System Non-Resident Undergraduate	7,042	7,742	8,378	9,318	10,161	44%
First Professional						
Dentistry (DDS)	136	123	115	107	112	-18%
Law (JD)	145	136	120	142	134	-8%
Medicine (MD)	118	115	120	147	154	31%
Optometry (OD)	85	89	93	97	107	26%
Pharmacy (Dpharm)	13	20	19	25	28	115%
Vet. Med (DVM)	23	27	57	65	69	200%
Total System Non-Resident 1st Professional	520	510	524	583	604	16%
Graduate						
Masters & Ed. Spec.	3,274	3,442	3,588	3,604	3,891	19%
Doctoral	1,846	1,948	2,092	2,197	2,357	28%
Nondegree	224	303	234	255	237	6%
Total System Non-Resident Graduate	5,344	5,693	5,914	6,056	6,485	21%
Grand Total System Non-Resident Headcount	12,906	13,945	14,816	15,957	17,250	34%

Table 4.1a Resident Headcount History by Student Level, Load, and Campus, Fall 2007 to Fall 2011

Level	2007	2008	2009	2010	2011	5 yr. Change
UNIVERSITY OF MISSOURI-COLUMBIA FULL-TIME RESIDENT HEADCOUNT						
Undergraduate						
Freshman & Soph DS	8,438	9,079	9,099	9,137	9,315	10%
Junior & Senior DS	8,769	8,967	9,294	9,675	9,922	13%
Nondegree	9	2	2	1	2	-78%
Total MU Full-time Resident Undergraduate	17,216	18,048	18,395	18,813	19,239	12%
First Professional						
Law (JD)	404	398	409	398	402	0%
Medicine (MD)	370	375	375	372	377	2%
Vet. Med (DVM)	255	259	264	301	344	35%
Total MU Full-time Resident 1st Professional	1,029	1,032	1,048	1,071	1,123	9%
Graduate						
Masters & Ed. Spec.	1,074	1,054	1,191	1,157	1,133	5%
Doctoral	305	322	376	761	750	146%
Nondegree	28	33	29	26	23	-18%
Total MU Full-time Resident Graduate	1,407	1,409	1,596	1,944	1,906	35%
Total MU Full-time Resident Headcount	19,652	20,489	21,039	21,828	22,268	13%
UNIVERSITY OF MISSOURI-COLUMBIA PART-TIME RESIDENT HEADCOUNT						
Undergraduate						
Freshman & Soph DS	267	249	257	229	266	0%
Junior & Senior DS	746	698	797	843	885	19%
Nondegree	143	213	186	139	153	7%
Total MU Part-time Resident Undergraduate	1,156	1,160	1,240	1,211	1,304	13%
First Professional						
Law (JD)	14	14	4	14	11	-21%
Medicine (MD)	0	0	0	0	0	-
Vet. Med (DVM)	0	0	0	0	0	-
Total MU Part-time Resident 1st Professional	14	14	4	14	11	-21%
Graduate						
Masters & Ed. Spec.	935	1,012	1,059	1,100	1,116	19%
Doctoral	700	659	679	318	416	-41%
Nondegree	348	469	381	357	345	-1%
Total MU Part-time Resident Graduate	1,983	2,140	2,119	1,775	1,877	-5%
Total MU Part-time Resident Headcount	3,153	3,314	3,363	3,000	3,192	1%
UNIVERSITY OF MISSOURI-COLUMBIA TOTAL RESIDENT HEADCOUNT						
Undergraduate						
Freshman & Soph DS	8,705	9,328	9,356	9,366	9,581	10%
Junior & Senior DS	9,515	9,665	10,091	10,518	10,807	14%
Nondegree	152	215	188	140	155	2%
Total MU Resident Undergraduate	18,372	19,208	19,635	20,024	20,543	12%
First Professional						
Law (JD)	418	412	413	412	413	-1%
Medicine (MD)	370	375	375	372	377	2%
Vet. Med (DVM)	255	259	264	301	344	35%
Total MU Resident 1st Professional	1,043	1,046	1,052	1,085	1,134	9%
Graduate						
Masters & Ed. Spec.	2,009	2,066	2,250	2,257	2,249	12%
Doctoral	1,005	981	1,055	1,079	1,166	16%
Nondegree	376	502	410	383	368	-2%
Total MU Resident Graduate	3,390	3,549	3,715	3,719	3,783	12%
Grand Total MU Resident Headcount	22,805	23,803	24,402	24,828	25,460	12%

Table 4.1b Non-Resident Headcount History by Student Level, Load, and Campus, Fall 2007 to Fall 2011

Level	2007	2008	2009	2010	2011	5 yr. Change
UNIVERSITY OF MISSOURI-COLUMBIA FULL-TIME NON-RESIDENT HEADCOUNT						
Undergraduate						
Freshman & Soph DS	1,864	2,265	2,658	3,137	3,417	83%
Junior & Senior DS	1,169	1,249	1,274	1,420	1,644	41%
Nondegree	35	49	44	53	113	223%
Total MU Full-time Non-Resident Undergraduate	3,068	3,563	3,976	4,610	5,174	69%
First Professional						
Law (JD)	38	40	31	30	18	-53%
Medicine (MD)	5	12	10	16	15	200%
Pet. Med (DVM)	23	27	57	65	69	200%
Total MU Full-time Non-Resident 1st Professional	66	79	98	111	102	55%
Graduate						
Masters & Ed. Spec.	664	678	714	674	797	20%
Doctoral	626	671	709	999	1,067	70%
Nondegree	21	25	17	20	24	14%
Total MU Full-time Non-Resident Graduate	1,311	1,374	1,440	1,693	1,888	44%
Total MU Full-time Non-Resident Headcount	4,445	5,016	5,514	6,414	7,164	61%
UNIVERSITY OF MISSOURI-COLUMBIA PART-TIME NON-RESIDENT HEADCOUNT						
Undergraduate						
Freshman & Soph DS	54	60	80	66	114	111%
Junior & Senior DS	79	81	69	95	123	56%
Nondegree	13	68	39	39	38	192%
Total MU Part-time Non-Resident Undergraduate	146	209	188	200	275	88%
First Professional						
Law (JD)	2	1	0	1	0	-100%
Medicine (MD)	0	0	0	0	0	-
Pet. Med (DVM)	0	0	0	0	0	-
Total MU Part-time Non-Resident 1st Professional	2	1	0	1	0	-100%
Graduate						
Masters & Ed. Spec.	433	479	517	546	488	13%
Doctoral	476	480	493	247	282	-41%
Nondegree	98	142	123	105	93	-5%
Total MU Part-time Non-Resident Graduate	1,007	1,101	1,133	898	863	-14%
Total MU Part-time Non-Resident Headcount	1,155	1,311	1,321	1,099		-100%
UNIVERSITY OF MISSOURI-COLUMBIA TOTAL NON-RESIDENT HEADCOUNT						
Undergraduate						
Freshman & Soph DS	1,918	2,325	2,738	3,203	3,531	84%
Junior & Senior DS	1,248	1,330	1,343	1,515	1,767	42%
Nondegree	48	117	83	92	151	215%
Total MU Non-Resident Undergraduate	3,214	3,772	4,164	4,810	5,449	70%
First Professional						
Law (JD)	40	41	31	31	18	-55%
Medicine (MD)	5	12	10	16	15	200%
Pet. Med (DVM)	23	27	57	65	69	200%
Total MU Non-Resident 1st Professional	68	80	98	112	102	50%
Graduate						
Masters & Ed. Spec.	1,097	1,157	1,231	1,220	1,285	17%
Doctoral	1,102	1,151	1,202	1,246	1,349	22%
Nondegree	119	167	140	125	117	-2%
Total MU Non-Resident Graduate	2,318	2,475	2,573	2,591	2,751	19%
Grand Total MU Non-Resident Headcount	5,600	6,327	6,835	7,513	8,302	48%

Table 4.2a Resident Headcount History by Student Level, Load, and Campus, Fall 2007 to Fall 2011

Level	2007	2008	2009	2010	2011	5 yr. Change
UNIVERSITY OF MISSOURI-KANSAS CITY FULL-TIME RESIDENT HEADCOUNT						
Undergraduate						
Freshman & Soph DS	1,962	1,987	2,067	2,125	2,183	11%
Junior & Senior DS	2,035	2,226	2,421	2,668	2,631	29%
Nondegree	27	17	6	11	7	-74%
Total UMKC Full-time Resident Undergraduate	4,024	4,230	4,494	4,804	4,821	20%
First Professional						
Dentistry (DDS)	265	276	286	298	308	16%
Law (JD)	367	378	388	357	330	-10%
Medicine (MD)	271	277	274	261	267	-1%
Pharmacy (Dpharm)	252	278	320	327	335	33%
Total UMKC Full-time Resident 1st Professional	1,155	1,209	1,268	1,243	1,240	7%
Graduate						
Masters & Ed. Spec.	439	435	492	534	522	19%
Doctoral	41	45	34	51	53	29%
Nondegree	3	2	18	1	0	-100%
Total UMKC Full-time Resident Graduate	483	482	544	586	575	19%
Total UMKC Full-time Resident Headcount	5,662	5,921	6,306	6,633	6,636	17%
UNIVERSITY OF MISSOURI-KANSAS CITY PART-TIME RESIDENT HEADCOUNT						
Undergraduate						
Freshman & Soph DS	304	278	270	269	305	0%
Junior & Senior DS	768	857	817	808	895	17%
Nondegree	1,997	1,759	1,499	1,483	1,495	-25%
Total UMKC Part-time Resident Undergraduate	3,069	2,894	2,586	2,560	2,695	-12%
First Professional						
Law (JD)	26	19	22	21	24	-8%
Total UMKC Part-time Resident 1st Professional	26	19	22	21	24	-8%
Graduate						
Masters & Ed. Spec.	1,090	1,073	1,110	1,124	1,058	-3%
Doctoral	168	204	216	192	164	-2%
Nondegree	497	226	221	152	187	-62%
Total UMKC Part-time Resident Graduate	1,755	1,503	1,547	1,468	1,409	-20%
Total UMKC Part-time Resident Headcount	4,850	4,416	4,155	4,049	4,128	-15%
UNIVERSITY OF MISSOURI-KANSAS CITY TOTAL RESIDENT HEADCOUNT						
Undergraduate						
Freshman & Soph DS	2,266	2,265	2,337	2,394	2,488	10%
Junior & Senior DS	2,803	3,083	3,238	3,476	3,526	26%
Nondegree	2,024	1,776	1,505	1,494	1,502	-26%
Total UMKC Resident Undergraduate	7,093	7,124	7,080	7,364	7,516	6%
First Professional						
Dentistry (DDS)	265	276	286	298	308	16%
Law (JD)	393	397	410	378	354	-10%
Medicine (MD)	271	277	274	261	267	-1%
Pharmacy (Dpharm)	252	278	320	327	335	33%
Total UMKC Resident 1st Professional	1,181	1,228	1,290	1,264	1,264	7%
Graduate						
Masters & Ed. Spec.	1,529	1,508	1,602	1,658	1,580	3%
Doctoral	209	249	250	243	217	4%
Nondegree	500	228	239	153	187	-63%
Total UMKC Resident Graduate	2,238	1,985	2,091	2,054	1,984	-11%
Grand Total UMKC Resident Headcount	10,512	10,337	10,461	10,682	10,764	2%

Table 4.2b Non-Resident Headcount History by Student Level, Load, and Campus, Fall 2007 to Fall 2011

Level	2007	2008	2009	2010	2011	5 yr. Change
UNIVERSITY OF MISSOURI-KANSAS CITY FULL-TIME NON-RESIDENT HEADCOUNT						
Undergraduate						
Freshman & Soph DS	650	658	712	753	747	15%
Junior & Senior DS	839	933	1,012	1,117	1,202	43%
Nondegree	24	41	46	70	80	233%
Total UMKC Full-time Non-Resident Undergraduate	1,513	1,632	1,770	1,940	2,029	34%
First Professional						
Dentistry (DDS)	136	123	115	107	112	-18%
Law (JD)	99	86	81	106	109	10%
Medicine (MD)	113	103	110	131	139	23%
Pharmacy (Dpharm)	13	20	19	25	28	115%
Total UMKC Full-time Non-Resident 1st Professional	361	332	325	369	388	7%
Graduate						
Masters & Ed. Spec.	549	580	556	520	556	1%
Doctoral	105	152	150	132	130	24%
Nondegree	1	2	6	2	6	500%
Total UMKC Full-time Non-Resident Graduate	655	734	712	654	692	6%
Total UMKC Full-time Non-Resident Headcount	2,529	2,698	2,807	2,963	3,109	23%
UNIVERSITY OF MISSOURI-KANSAS CITY PART-TIME NON-RESIDENT HEADCOUNT						
Undergraduate						
Freshman & Soph DS	126	93	77	94	111	-12%
Junior & Senior DS	291	318	345	352	385	32%
Nondegree	71	94	109	100	81	14%
Total UMKC Part-time Non-Resident Undergraduate	488	505	531	546	577	18%
First Professional						
Law (JD)	6	9	8	5	7	17%
Total UMKC Part-time Non-Resident 1st Professional	6	9	8	5	7	17%
Graduate						
Masters & Ed. Spec.	599	635	675	715	653	9%
Doctoral	222	230	256	289	301	36%
Nondegree	86	67	61	59	62	-28%
Total UMKC Part-time Non-Resident Graduate	907	932	992	1,063	1,016	12%
Total UMKC Part-time Non-Resident Headcount	1,401	1,446	1,531	1,614	1,600	14%
UNIVERSITY OF MISSOURI-KANSAS CITY TOTAL NON-RESIDENT HEADCOUNT						
Undergraduate						
Freshman & Soph DS	776	751	789	847	858	11%
Junior & Senior DS	1,130	1,251	1,357	1,469	1,587	40%
Nondegree	95	135	155	170	161	69%
Total UMKC Non-Resident Undergraduate	2,001	2,137	2,301	2,486	2,606	30%
First Professional						
Dentistry (DDS)	136	123	115	107	112	-18%
Law (JD)	105	95	89	111	116	10%
Medicine (MD)	113	103	110	131	139	23%
Pharmacy (Dpharm)	13	20	19	25	28	115%
Total UMKC Non-Resident 1st Professional	367	341	333	374	395	8%
Graduate						
Masters & Ed. Spec.	1,148	1,215	1,231	1,235	1,209	5%
Doctoral	327	382	406	421	431	32%
Nondegree	87	69	67	61	68	-22%
Total UMKC Non-Resident Graduate	1,562	1,666	1,704	1,717	1,708	9%
Grand Total UMKC Non-Resident Headcount	3,930	4,144	4,338	4,577	4,709	20%

Table 4.3a Resident Headcount History by Student Level, Load, and Campus, Fall 2007 to Fall 2011

Level	2007	2008	2009	2010	2011	5 yr. Change
MISSOURI S&T FULL-TIME RESIDENT HEADCOUNT						
Undergraduate						
Freshman & Soph DS	1,607	1,650	1,760	1,811	1,780	11%
Junior & Senior DS	1,923	2,012	2,114	2,178	2,313	20%
Nondegree	1	4	1	0	1	0%
Total MO S&T Full-time Resident Undergraduate	3,531	3,666	3,875	3,989	4,094	16%
Graduate						
Masters & Ed. Spec.	137	118	158	207	199	45%
Doctoral	84	75	75	64	79	-6%
Nondegree	0	0	0	0	0	-
Total MO S&T Full-time Resident Graduate	221	193	233	271	278	26%
Total Missouri S&T Full-time Resident Headcount	3,752	3,859	4,108	4,260	4,372	17%
MISSOURI S&T PART-TIME RESIDENT HEADCOUNT						
Undergraduate						
Freshman & Soph DS	62	57	70	65	68	10%
Junior & Senior DS	223	229	230	299	295	32%
Nondegree	38	22	38	34	47	24%
Total MO S&T Part-time Resident Undergraduate	323	308	338	398	410	27%
Graduate						
Masters & Ed. Spec.	243	261	222	232	256	5%
Doctoral	30	43	38	47	43	43%
Nondegree	7	15	12	8	5	-29%
Total MO S&T Part-time Resident Graduate	280	319	272	287	304	9%
Total Missouri S&T Part-time Resident Headcount	603	627	610	685	714	18%
MISSOURI S&T TOTAL RESIDENT HEADCOUNT						
Undergraduate						
Freshman & Soph DS	1,669	1,707	1,830	1,876	1,848	11%
Junior & Senior DS	2,146	2,241	2,344	2,477	2,608	22%
Nondegree	39	26	39	34	48	23%
Total MO S&T Resident Undergraduate	3,854	3,974	4,213	4,387	4,504	17%
Graduate						
Masters & Ed. Spec.	380	379	380	439	455	20%
Doctoral	114	118	113	111	122	7%
Nondegree	7	15	12	8	5	-29%
Total MO S&T Resident Graduate	501	512	505	558	582	16%
Grand Total Missouri S&T Resident Headcount	4,355	4,486	4,718	4,945	5,086	17%

Table 4.3b Non-Resident Headcount History by Student Level, Load, and Campus, Fall 2007 to Fall 2011

Level	2007	2008	2009	2010	2011	5 yr. Change
MISSOURI S&T FULL-TIME NON-RESIDENT HEADCOUNT						
Undergraduate						
Freshman & Soph DS	446	459	463	465	458	3%
Junior & Senior DS	397	419	459	536	582	47%
Nondegree	1	4	10	5	9	800%
Total MO S&T Full-time Non-Resident Undergraduate	844	882	932	1,006	1,049	24%
Graduate						
Masters & Ed. Spec.	362	352	438	411	447	23%
Doctoral	185	212	281	320	361	95%
Nondegree	0	1	0	7	0	
Total MO S&T Full-time Non-Resident Graduate	547	565	719	738	808	48%
Total Missouri S&T Full-time Non-Resident Headcount	1,391	1,447	1,651	1,744	1,857	34%
MISSOURI S&T PART-TIME NON-RESIDENT HEADCOUNT						
Undergraduate						
Freshman & Soph DS	12	14	11	48	21	75%
Junior & Senior DS	35	35	38	55	87	149%
Nondegree	7	6	12	7	10	43%
Total MO S&T Part-time Non-Resident Undergraduate	54	55	61	110	118	119%
Graduate						
Masters & Ed. Spec.	317	339	350	366	408	29%
Doctoral	45	34	30	35	45	0%
Nondegree	4	6	4	5	7	75%
Total MO S&T Part-time Non-Resident Graduate	366	379	384	406	460	26%
Total Missouri S&T Part-time Non-Resident Headcount	420	434	445	516	578	38%
MISSOURI S&T TOTAL NON-RESIDENT HEADCOUNT						
Undergraduate						
Freshman & Soph DS	458	473	474	513	479	5%
Junior & Senior DS	432	454	497	591	669	55%
Nondegree	8	10	22	12	19	138%
Total MO S&T Non-Resident Undergraduate	898	937	993	1,116	1,167	30%
Graduate						
Masters & Ed. Spec.	679	691	788	777	855	26%
Doctoral	230	246	311	355	406	77%
Nondegree	4	7	4	12	7	75%
Total MO S&T Non-Resident Graduate	913	944	1,103	1,144	1,268	39%
Grand Total Missouri S&T Non-Resident Headcount	1,811	1,881	2,096	2,260	2,435	34%

Table 4.4a Resident Headcount History by Student Level, Load, and Campus, Fall 2007 to Fall 2011

Level	2007	2008	2009	2010	2011	5 yr. Change
UNIVERSITY OF MISSOURI-ST. LOUIS FULL-TIME RESIDENT HEADCOUNT						
Undergraduate						
Freshman & Soph DS	1,497	1,664	1,588	1,536	1,578	5%
Junior & Senior DS	3,651	3,351	3,612	3,702	3,553	-3%
Nondegree	101	107	117	139	147	46%
Total UMSL Full-time Resident Undergraduate	5,249	5,122	5,317	5,377	5,278	1%
First Professional						
Optometry (OD)	86	89	86	74	65	-24%
Total UMSL Full-time Resident 1st Professional	86	89	86	74	65	-24%
Graduate						
Masters & Ed. Spec.	401	429	470	479	454	13%
Doctoral	59	59	59	120	131	122%
Nondegree	16	16	21	30	34	113%
Total UMSL Full-time Resident Graduate	476	504	550	629	619	30%
Total UMSL Full-time Resident Headcount	5,811	5,715	5,953	6,080	5,962	3%
UNIVERSITY OF MISSOURI-ST. LOUIS PART-TIME RESIDENT HEADCOUNT						
Undergraduate						
Freshman & Soph DS	379	499	462	429	411	8%
Junior & Senior DS	2,570	2,358	2,422	2,568	2,626	2%
Nondegree	3,305	3,483	3,845	3,891	3,897	18%
Total UMSL Part-time Resident Undergraduate	6,254	6,340	6,729	6,888	6,934	11%
First Professional						
Optometry (OD)	0	0	0	0	0	-
Total UMSL Part-time Resident 1st Professional	0	0	0	0	0	-
Graduate						
Masters & Ed. Spec.	1,522	1,607	1,773	1,766	1,676	10%
Doctoral	282	291	321	278	269	-5%
Nondegree	93	195	211	172	164	76%
Total UMSL Part-time Resident Graduate	1,897	2,093	2,305	2,216	2,109	11%
Total UMSL Part-time Resident Headcount	8,151	8,433	9,034	9,104	9,043	11%
UNIVERSITY OF MISSOURI-ST. LOUIS TOTAL RESIDENT HEADCOUNT						
Undergraduate						
Freshman & Soph DS	1,876	2,163	2,050	1,965	1,989	6%
Junior & Senior DS	6,221	5,709	6,034	6,270	6,179	-1%
Nondegree	3,406	3,590	3,962	4,030	4,044	19%
Total UMSL Resident Undergraduate	11,503	11,462	12,046	12,265	12,212	6%
First Professional						
Optometry (OD)	86	89	86	74	65	-24%
Total UMSL Resident 1st Professional	86	89	86	74	65	-24%
Graduate						
Masters & Ed. Spec.	1,923	2,036	2,243	2,245	2,130	11%
Doctoral	341	350	380	398	400	17%
Nondegree	109	211	232	202	198	82%
Total UMSL Resident Graduate	2,373	2,597	2,855	2,845	2,728	15%
Grand Total UMSL Resident Headcount	13,962	14,148	14,987	15,184	15,005	7%

Table 4.4b Non-Resident Headcount History by Student Level, Load, and Campus, Fall 2007 to Fall 2011

Level	2007	2008	2009	2010	2011	5 yr. Change
UNIVERSITY OF MISSOURI-ST. LOUIS FULL-TIME NON-RESIDENT HEADCOUNT						
Undergraduate						
Freshman & Soph DS	231	267	286	274	306	32%
Junior & Senior DS	412	353	383	396	391	-5%
Nondegree	51	57	42	40	39	-24%
Total UMSL Full-time Non-Resident Undergraduate	694	677	711	710	736	6%
First Professional						
Optometry (OD)	85	89	93	97	107	26%
Total UMSL Full-time Non-Resident 1st Professional	85	89	93	97	107	26%
Graduate						
Masters & Ed. Spec.	202	164	167	165	143	-29%
Doctoral	66	73	68	146	137	108%
Nondegree	6	9	8	12	6	0%
Total UMSL Full-time Non-Resident Graduate	274	246	243	323	286	4%
Total UMSL Full-time Non-Resident Headcount	1,053	1,012	1,047	1,130	1,129	7%
UNIVERSITY OF MISSOURI-ST. LOUIS PART-TIME NON-RESIDENT HEADCOUNT						
Undergraduate						
Freshman & Soph DS	29	28	19	26	27	-7%
Junior & Senior DS	177	158	157	141	139	-21%
Nondegree	29	33	33	29	37	28%
Total UMSL Part-time Non-Resident Undergraduate	235	219	209	196	203	-14%
First Professional						
Optometry (OD)	0	0	0	0	0	-
Total UMSL Part-time Non-Resident 1st Professional	0	0	0	0	0	-
Graduate						
Masters & Ed. Spec.	148	215	171	207	399	170%
Doctoral	121	96	105	29	34	-72%
Nondegree	8	51	15	45	39	388%
Total UMSL Part-time Non-Resident Graduate	277	362	291	281	472	70%
Total UMSL Part-time Non-Resident Headcount	512	581	500	477	675	32%
UNIVERSITY OF MISSOURI-ST. LOUIS TOTAL NON-RESIDENT HEADCOUNT						
Undergraduate						
Freshman & Soph DS	260	295	305	300	333	28%
Junior & Senior DS	589	511	540	537	530	-10%
Nondegree	80	90	75	69	76	-5%
Total UMSL Non-Resident Undergraduate	929	896	920	906	939	1%
First Professional						
Optometry (OD)	85	89	93	97	107	26%
Total UMSL Non-Resident 1st Professional	85	89	93	97	107	26%
Graduate						
Masters & Ed. Spec.	350	379	338	372	542	55%
Doctoral	187	169	173	175	171	-9%
Nondegree	14	60	23	57	45	221%
Total UMSL Non-Resident Graduate	551	608	534	604	758	38%
Grand Total UMSL Non-Resident Headcount	1,565	1,593	1,547	1,607	1,804	15%

Table 5. Headcount Students by Gender and Ethnicity, Fall 2011

Data - Classification	<u>MU</u>		<u>UMKC</u>		<u>MO S&T</u>		<u>UMSL</u>		<u>TOTAL</u>	
	HC	%	HC	%	HC	%	HC	%	HC	%
A. Gender										
Men										
First-time DS Freshmen	2,844	46%	422	36%	855	78%	222	44%	4,343	49%
Other Undergraduate	9,644	49%	3,834	43%	3,500	77%	5,194	41%	22,172	48%
First Professional	556	45%	857	52%	0	-	67	39%	1,480	48%
Graduate	<u>2,748</u>	42%	<u>1,541</u>	42%	<u>1,482</u>	80%	<u>1,160</u>	33%	<u>6,931</u>	45%
Total	15,792	47%	6,654	43%	5,837	78%	6,643	40%	34,926	47%
Women										
First-time DS Freshmen	3,294	54%	737	64%	241	22%	282	56%	4,554	51%
Other Undergraduate	10,210	51%	5,129	57%	1,075	23%	7,453	59%	23,867	52%
First Professional	680	55%	798	48%	0	-	105	61%	1,583	52%
Graduate	<u>3,786</u>	58%	<u>2,155</u>	58%	<u>368</u>	20%	<u>2,326</u>	67%	<u>8,635</u>	55%
Total	17,970	53%	8,819	57%	1,684	22%	10,166	60%	38,639	53%
Grand Total	33,762		15,473		7,521		16,809		73,565	

Table 5. Headcount Students by Gender and Ethnicity (continued)

Data - Classification	<u>MU</u>		<u>UMKC</u>		<u>MO S&T</u>		<u>UMSL</u>		<u>TOTAL</u>	
	HC	%	HC	%	HC	%	HC	%	HC	%
B. Ethnicity *										
Am Indian/Alaskan Native										
First-time DS Freshmen	12	0%	5	0%	2	0%	6	1%	25	0%
Other Undergraduate	81	0%	39	0%	27	1%	25	0%	172	0%
First Professional	18	2%	6	0%	0	-	0	0%	24	1%
Graduate	<u>23</u>	0%	<u>7</u>	0%	<u>4</u>	0%	<u>12</u>	0%	<u>46</u>	0%
Total	134	0%	57	0%	33	0%	43	0%	267	0%
Asian										
First-time DS Freshmen	151	2%	109	10%	16	1%	31	6%	307	4%
Other Undergraduate	467	2%	454	6%	82	2%	445	4%	1,448	3%
First Professional	55	5%	267	17%	0	-	15	10%	337	12%
Graduate	<u>122</u>	2%	<u>83</u>	2%	<u>58</u>	3%	<u>97</u>	3%	<u>360</u>	2%
Total	795	2%	913	6%	156	2%	588	4%	2,452	3%
Pacific Islander										
First-time DS Freshmen	4	0%	4	0%	2	0%	2	0%	12	0%
Other Undergraduate	7	0%	15	0%	10	0%	4	0%	36	0%
First Professional	0	0%	0	0%	0	-	0	0%	0	0%
Graduate	<u>1</u>	0%	<u>1</u>	0%	<u>5</u>	0%	<u>2</u>	0%	<u>9</u>	0%
Total	12	0%	20	0%	17	0%	8	0%	57	0%
African-American Non-Hispanic										
First-time DS Freshmen	535	9%	254	23%	43	4%	100	21%	932	11%
Other Undergraduate	1,459	8%	1,186	14%	242	6%	2,003	17%	4,890	11%
First Professional	41	4%	59	4%	0	-	6	4%	106	4%
Graduate	<u>242</u>	4%	<u>280</u>	8%	<u>66</u>	4%	<u>496</u>	16%	<u>1,084</u>	7%
Total	2,277	7%	1,779	12%	351	5%	2,605	17%	7,012	10%
Hispanic										
First-time DS Freshmen	222	4%	78	7%	30	3%	15	3%	345	4%
Other Undergraduate	507	3%	437	5%	100	2%	271	2%	1,315	3%
First Professional	30	3%	40	3%	0	-	2	1%	72	3%
Graduate	<u>124</u>	2%	<u>121</u>	4%	<u>50</u>	3%	<u>78</u>	2%	<u>373</u>	3%
Total	883	3%	676	5%	180	3%	366	2%	2,105	3%
White Non-Hispanic										
First-time DS Freshmen	4,923	81%	577	52%	951	89%	265	55%	6,716	77%
Other Undergraduate	16,113	83%	5,611	68%	3,578	82%	8,639	73%	33,941	77%
First Professional	1,022	88%	1,150	75%	0		127	82%	2,299	80%
Graduate	<u>4,466</u>	71%	<u>2,335</u>	69%	<u>836</u>	47%	<u>2,265</u>	71%	<u>9,902</u>	68%
Total	26,524	80%	9,673	68%	5,365	75%	11,296	72%	52,858	75%
Nonresident Alien										
First-time DS Freshmen	81	1%	44	4%	11	1%	45	9%	181	2%
Other Undergraduate	606	3%	331	4%	270	6%	327	3%	1,534	4%
First Professional	1	0%	8	1%	0	-	4	3%	13	0%
Graduate	<u>1,254</u>	20%	<u>543</u>	16%	<u>754</u>	42%	<u>216</u>	7%	<u>2,767</u>	19%
Total	1,942	6%	926	6%	1,035	14%	592	4%	4,495	6%
Two or More Race										
First-time DS Freshmen	168	3%	33	3%	19	2%	19	4%	239	3%
Other Undergraduate	204	1%	142	2%	32	1%	94	1%	472	1%
First Professional	1	0%	6	0%	0	-	1	1%	8	0%
Graduate	<u>73</u>	1%	<u>22</u>	1%	<u>2</u>	0%	<u>20</u>	1%	<u>117</u>	1%
Total	446	1%	203	1%	53	1%	134	1%	836	1%
Grand Total	33,013		14,247		7,190		15,632		70,082	

* Note: Students not reporting ethnicity (Unknown) were removed from the distribution.

Unknown

First-time DS Freshmen	42	55	22	21	140
Other Undergraduate	410	748	234	839	2,231
First Professional	68	119	0	17	204
Graduate	<u>229</u>	<u>304</u>	<u>75</u>	<u>300</u>	<u>908</u>
Total	749	1,226	331	1,177	3,483

Source: EMSAS Fall Enrollment file

IR&P/NK 11/17