

**ENROLLMENT SUMMARY REPORT
FALL 2012**

Dr. La Shonda Carter-Boone
Senior Institutional Research Analyst

Office of Institutional Research & Planning
714 Lewis Hall
University of Missouri System

November 2012

IR&P 2012, Report 2

<http://www.umsystem.edu/ums/departments/fa/planning/>

FALL 2012 ENROLLMENT SUMMARY

Executive Summary

This report summarizes the status and trends in fall enrollment at the University of Missouri's four campuses. The report includes information about enrollment, full-time equivalence, new students on campus, undergraduate transfer students, full/part-time status, gender and ethnicity information.

Please note that enrollment totals in this report follow federal and state guidelines, which recommend that students who are classified as "exclusive auditors" are not included in enrollment figures. Consequently, students who are classified as "exclusive auditors" are not included in the campus totals. (Exclusive auditors are defined as students who are enrolled exclusively in courses that are not taken for credit.)

Highlights of the report include:

- The University of Missouri System enrolled a record 75,044 students in Fall 2012, 1,479 more students than the record 73,565 students that enrolled in Fall 2011. Total enrollment at the University has increased by 21% over the past 10 years (Table 1).
- In Fall 2012, the University of Missouri System enrolled 56,750 undergraduate students (76% of total headcount), 3,164 first professional students (4%), and 15,130 graduate students (20%) (Table 1).
- Over the past 10 years, undergraduate headcount has increased by 23%, first-professional headcount by 17% and graduate headcount by 16% (Table 1).
- Since 2008, total student credit hours and total full-time equivalence have both increased by 14% and 13%, respectively (Table 2.0).
- Over the past five years, total full-time resident headcount has increased 7% (Table 4.0a) and total full-time non-resident headcount has increased 32% (Table 4.0b).
- Women comprised 52% of total enrollment in Fall 2012. UM-St. Louis had the largest percentage of women (60%) and MO S&T had the highest proportion of men (77%) (Table 5).
- Of all the students of known ethnicity, under-represented minorities (American Indian/Alaskan Native, African-American, and Hispanic) represented 13% of the University of Missouri System's total enrollment (Table 5).

Technical Notes

These tables provide counts of students enrolled in the fall of 2012 on-schedule credit courses at the four campuses of the University of Missouri. Five and ten-year trend data are included in the tables for comparison purposes. The data used in this report were generated from the EMSAS Fall Enrollment files, which are submitted to the Missouri Department of Higher Education (MDHE) each fall. Data included in EMSAS files were prepared in the admissions and registration offices at the respective campuses. The data are counts as of the census date at each campus, which is defined as the end of the fourth week of classes for the fall session. The source data are based on the reporting guidelines and definitions of the Missouri Department of Higher Education (MDHE) and the National Center for Educational Statistics (NCES).

Tables in the Table 2 series (2.0-2.4) include counts of on- and off-campus students. The columns titled “On-Campus”, according to the MDHE guidelines, include students enrolled geographically on campus and students in the Graduate Engineering (Residence) Centers. All other students are counted in the columns headed “Off-Campus”, which include students enrolled in extension courses and students that receive H.S. advanced credit from the Kansas City and St. Louis campuses. The tables of the Table 2 series also include full-time equivalence (FTE) counts.

Tables in the Table 4 series (4.0a-4.4b) include counts of resident and non-resident students by level and course load (full-time vs. part-time).

Definitions of FTE:

Undergraduate FTE = Total Student Credit Hours/15

Graduate FTE = Total Student Credit Hours/12

Dentistry FTE = Headcount

Law FTE = Total Student Credit Hours/15

UMC Medicine FTE = Headcount

UMKC Medicine FTE = Headcount

Optometry FTE = Headcount

Pharmacy FTE = Headcount

Vet Medicine FTE = Headcount

Caveats

First- and second-year students in the Medicine MD program at UMKC are included in the undergraduate counts of the Table 2 and Table 4 series.

Enrollment counts for students in “Off-Schedule” courses, which include intersession courses, short courses, Video Credit courses, and other courses which begin and end on dates other than those for the regular academic semester, are accumulated during the term in which the courses began and are reported the semester following their end date.

**Figure 1: Rate of Change in Fall Headcount by Student Level and Campus,
Fall 2003 to Fall 2012**

UNIVERSITY OF MISSOURI SYSTEM

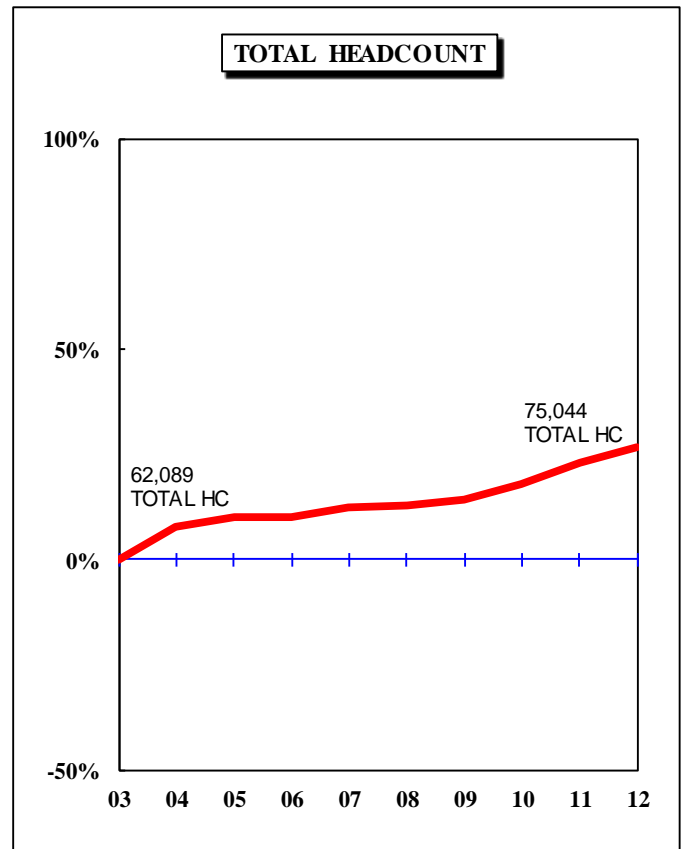
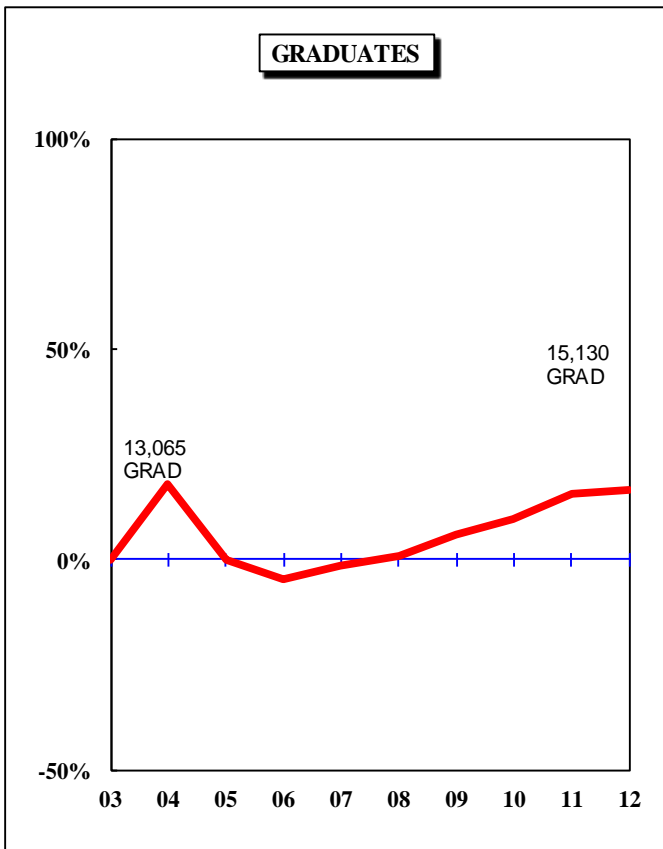
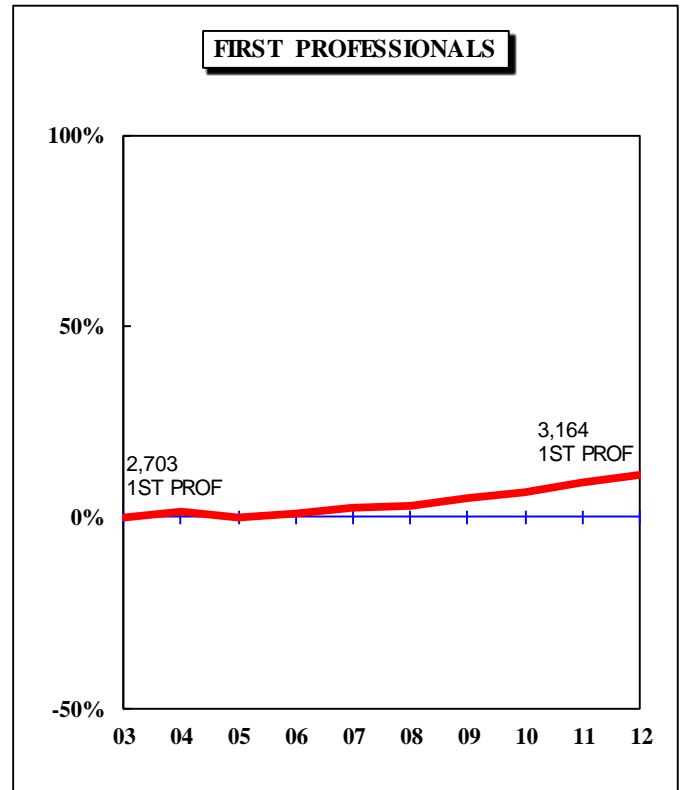
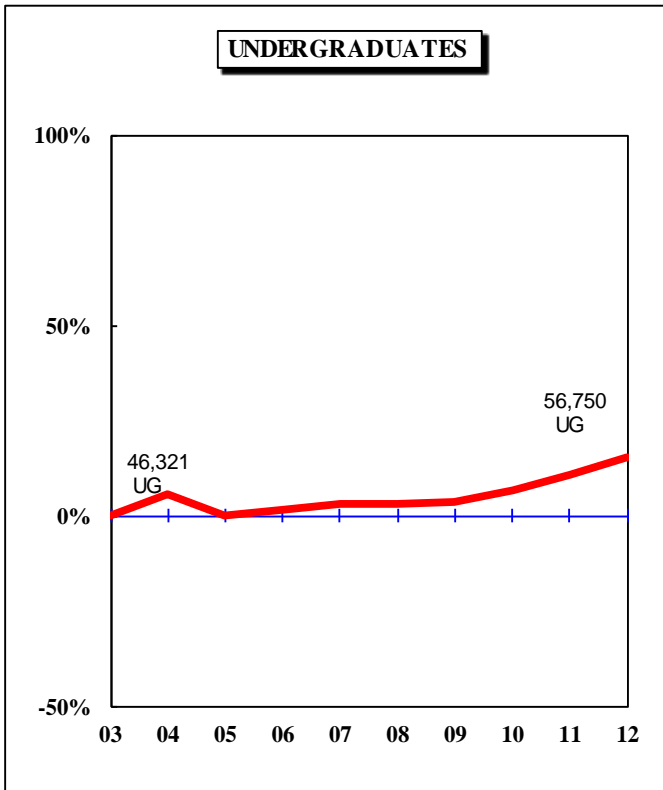


Figure 1.1: Rate of Change in Fall Headcount by Student Level and Campus, Fall 2003 to Fall 2012

UNIVERSITY OF MISSOURI-COLUMBIA

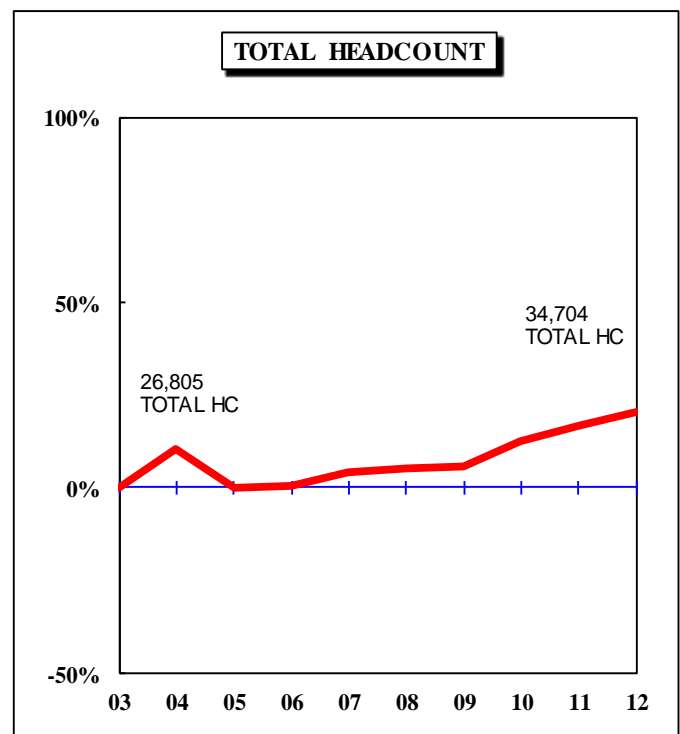
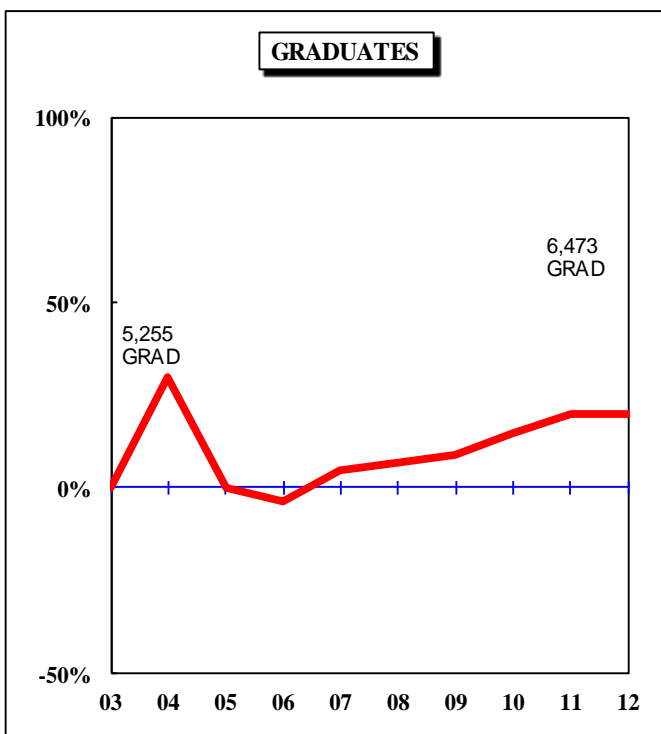
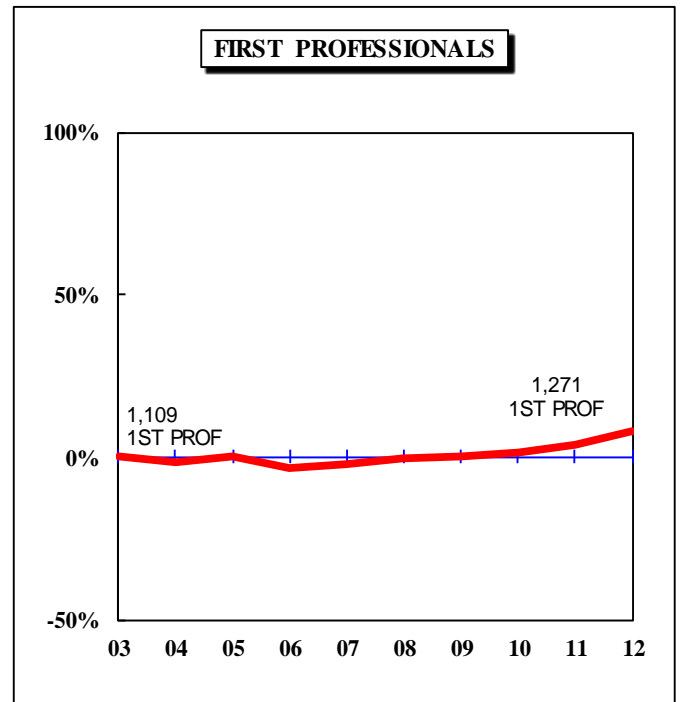
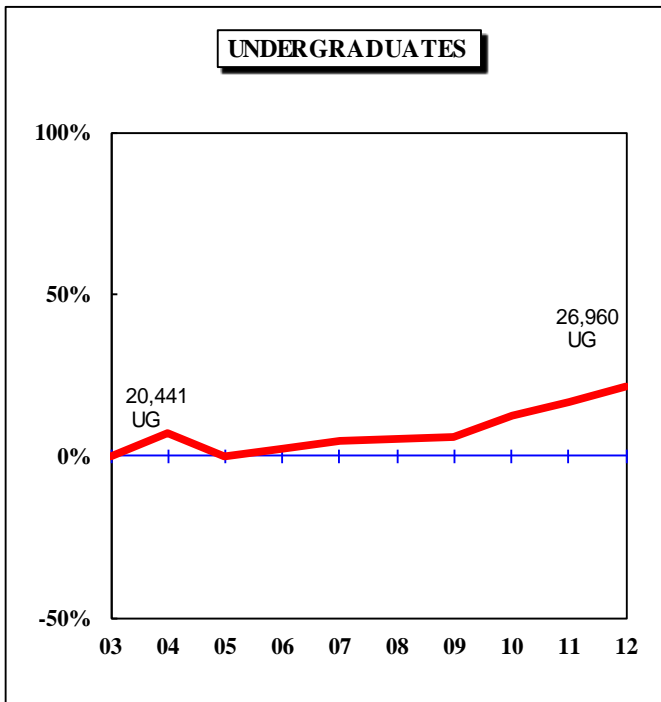


Figure 1.2: Rate of Change in Fall Headcount by Student Level and Campus, Fall 2003 to Fall 2012

UNIVERSITY OF MISSOURI-KANSAS CITY

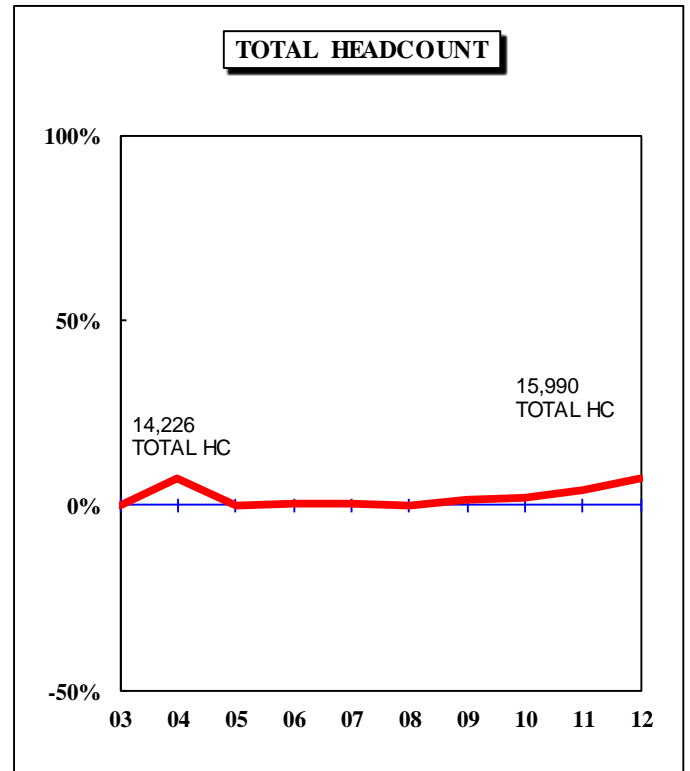
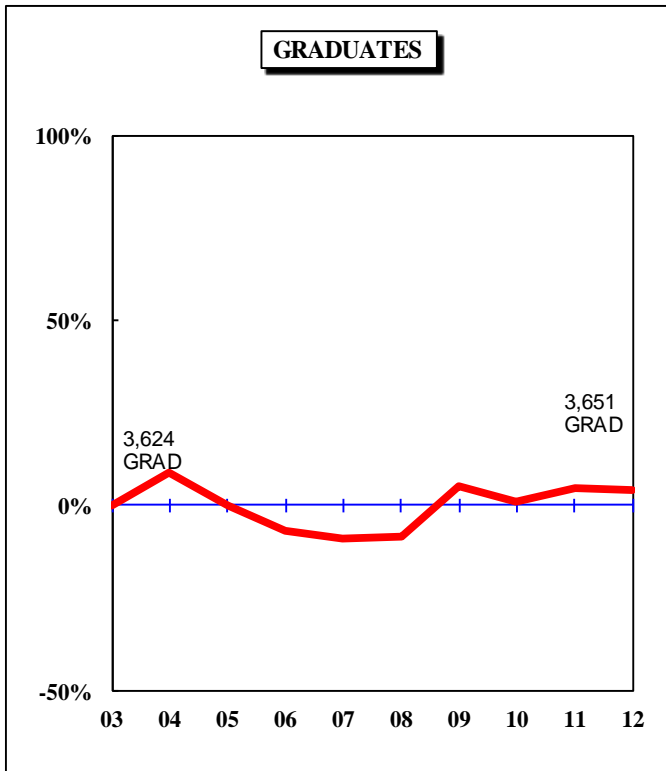
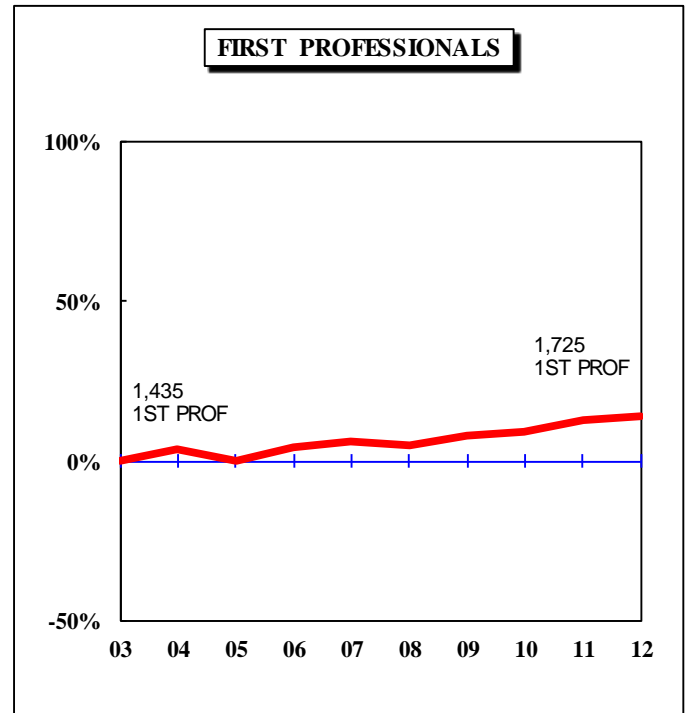
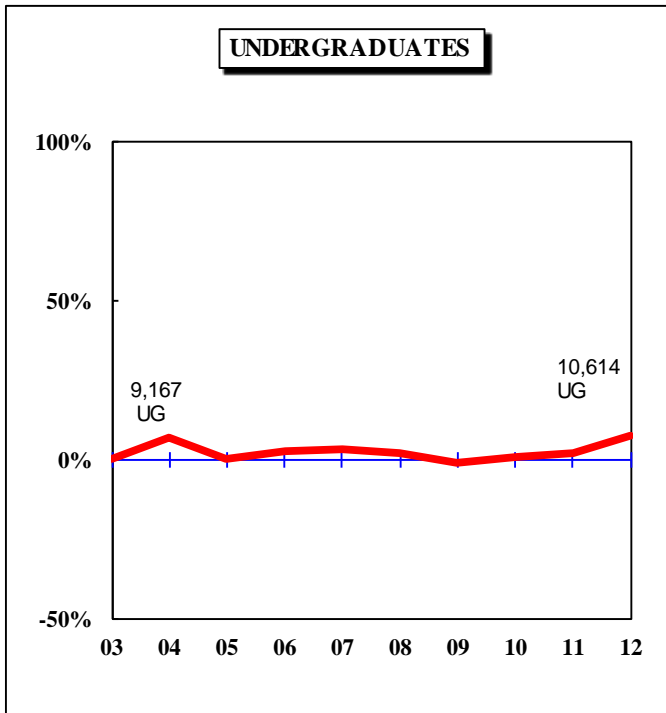


Figure 1.3: Rate of Change in Fall Headcount by Student Level and Campus, Fall 2003 to Fall 2012

MISSOURI S&T

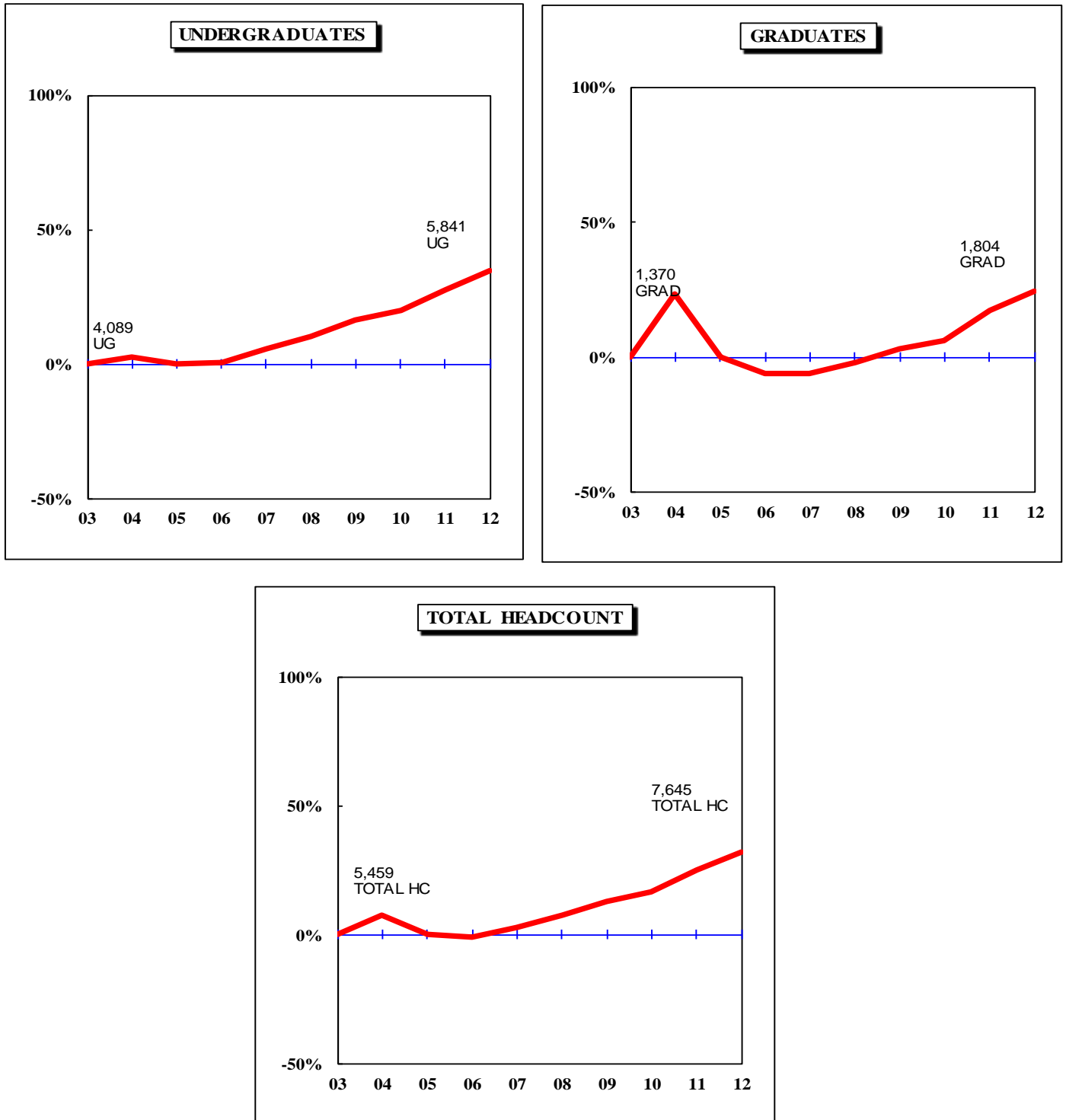


Figure 1.4: Rate of Change in Fall Headcount by Student Level and Campus, Fall 2003 to Fall 2012

UNIVERSITY OF MISSOURI-ST. LOUIS

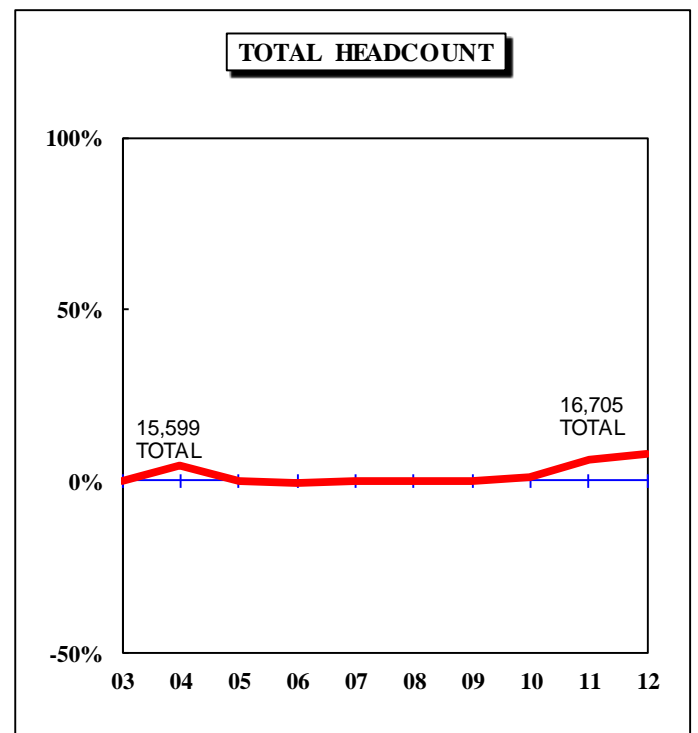
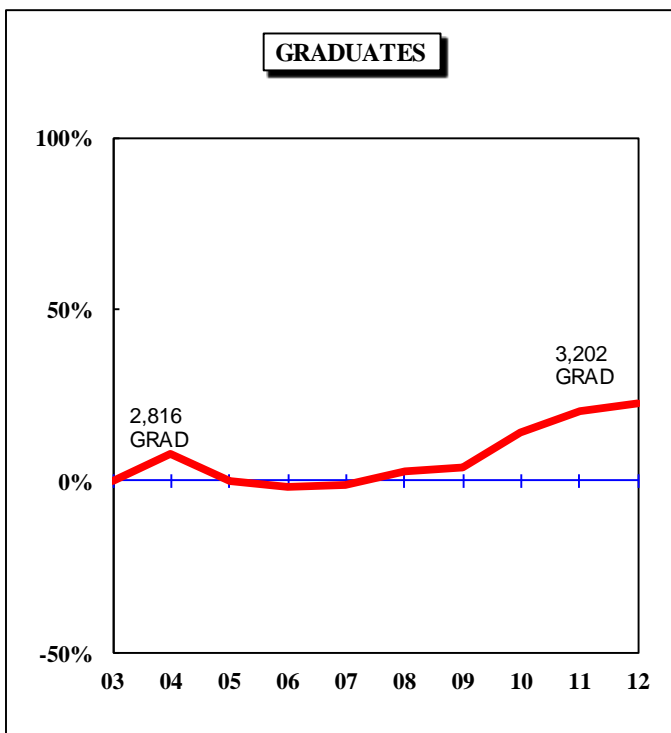
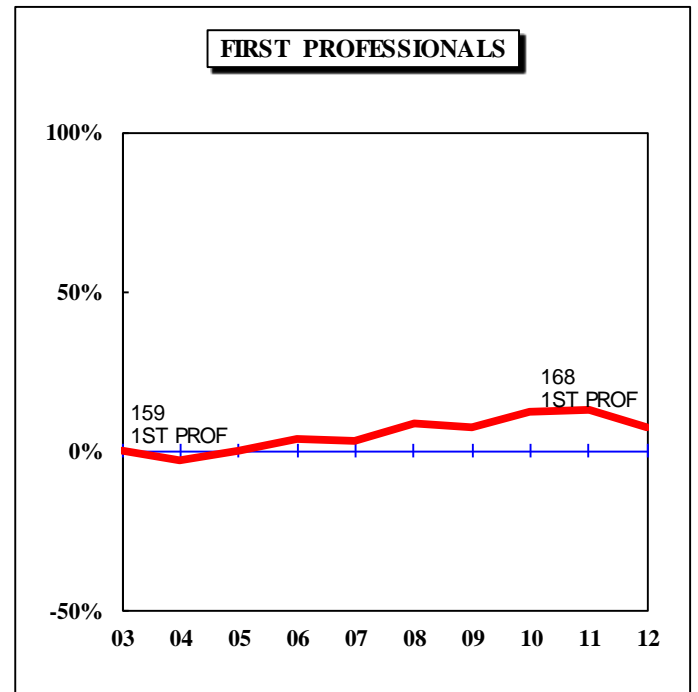
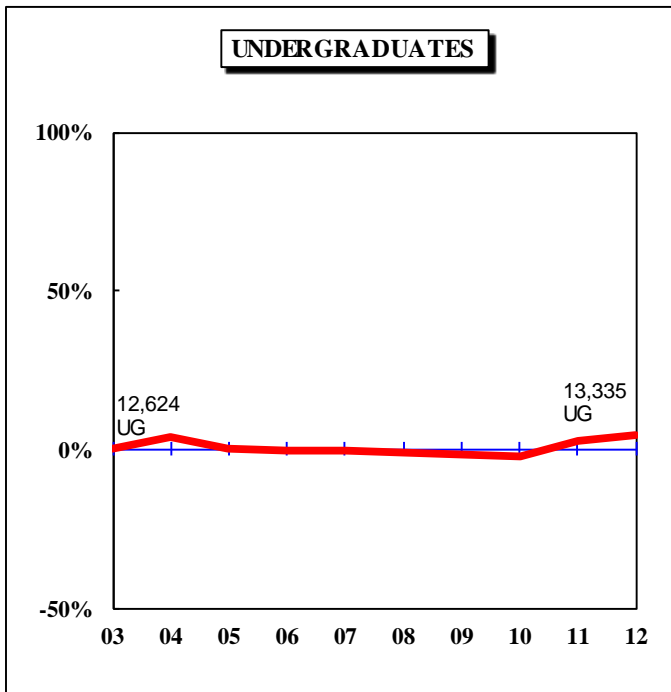
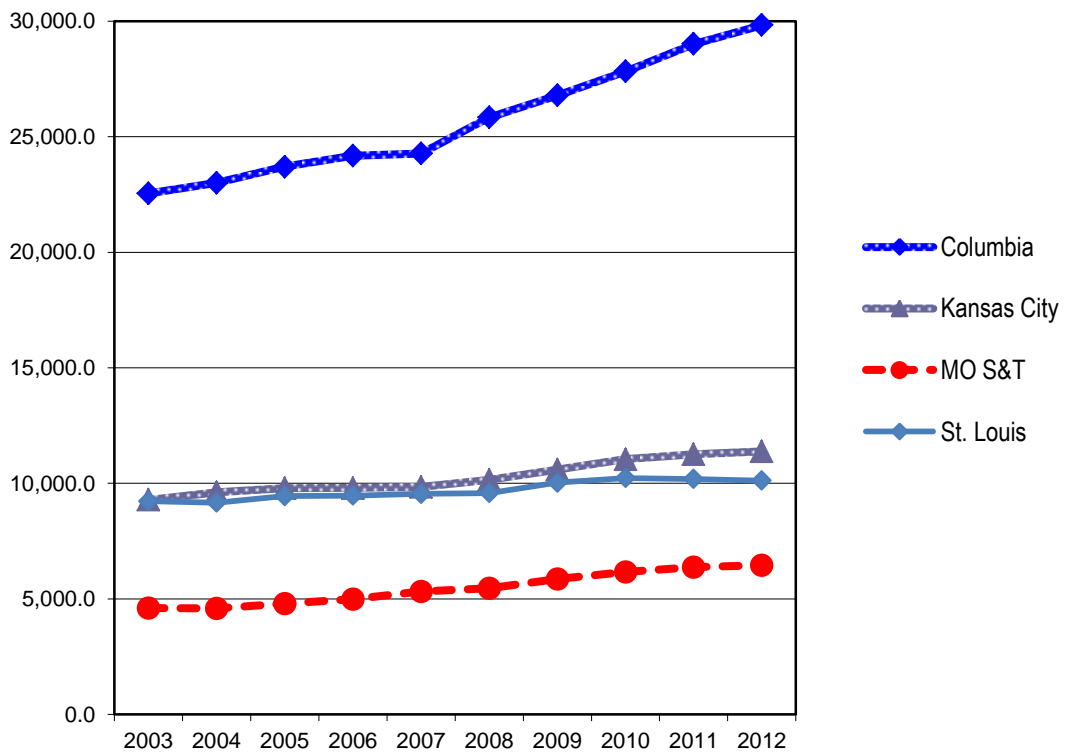


Table 1. Headcount History by Student Level and Campus, Fall 2003 to Fall 2012

Campus	Level	2003	2004	2005	2006	2007	2008	2009	2010	2011	2012	10 yr. Change
Columbia	Undergraduate	20,441	20,883	21,335	21,484	21,586	22,980	23,799	24,834	25,992	26,960	32%
	Professional	1,109	1,069	1,083	1,102	1,111	1,126	1,150	1,197	1,236	1,271	15%
	Graduate	5,255	5,051	5,512	5,598	5,708	6,024	6,288	6,310	6,534	6,473	23%
	Total	26,805	27,003	27,930	28,184	28,405	30,130	31,237	32,341	33,762	34,704	29%
Kansas City	Undergraduate	9,167	9,393	9,487	9,383	9,094	9,261	9,381	9,850	10,122	10,614	16%
	Professional	1,435	1,494	1,523	1,509	1,548	1,569	1,623	1,638	1,659	1,725	20%
	Graduate	3,624	3,369	3,296	3,321	3,800	3,651	3,795	3,771	3,692	3,651	1%
	Total*	14,226	14,256	14,306	14,213	14,442	14,481	14,799	15,259	15,473	15,990	12%
MO S&T	Undergraduate	4,089	4,119	4,311	4,515	4,752	4,911	5,206	5,503	5,671	5,841	43%
	Graduate	1,370	1,285	1,289	1,343	1,414	1,456	1,608	1,702	1,850	1,804	32%
	Total	5,459	5,404	5,600	5,858	6,166	6,367	6,814	7,205	7,521	7,645	40%
St. Louis	Undergraduate	12,624	12,572	12,606	12,459	12,432	12,358	12,966	13,171	13,151	13,335	6%
	Professional	159	165	164	173	171	178	179	171	172	168	6%
	Graduate	2,816	2,761	2,778	2,896	2,924	3,205	3,389	3,449	3,486	3,202	14%
	Total*	15,599	15,498	15,548	15,528	15,527	15,741	16,534	16,791	16,809	16,705	7%
System	Undergraduate	46,321	46,967	47,739	47,841	47,864	49,510	51,352	53,358	54,936	56,750	23%
	Professional	2,703	2,728	2,770	2,784	2,830	2,873	2,952	3,006	3,067	3,164	17%
	Graduate	13,065	12,466	12,875	13,158	13,846	14,336	15,080	15,232	15,562	15,130	16%
	Grand Total	62,089	62,161	63,384	63,783	64,540	66,719	69,384	71,596	73,565	75,044	21%

*The total enrollment for UMKC and UMSL include students taking college credit at their high school through dual credit programs. When these students are excluded from the headcount, the total enrollment for UMKC is 14,129 and the total enrollment for UMSL is 12,699.

Figure 2. Full-time Equivalence History by Campus, 2003 to 2012



Source: EMSAS Fall Enrollment file
IR&P/LCB 10/31/12

Full-time Equivalent History by Campus, 2003 to 2012

Campus	2003	2004	2005	2006	2007	2008	2009	2010	2011	2012
Columbia	22,556.0	23,000.0	23,703.6	24,182.7	24,280.4	25,840.2	26,797.4	27,838.4	29,020.4	29,845.0
Kansas City	9,290.0	9,607.7	9,795.3	9,797.9	9,843.8	10,152.4	10,597.5	11,042.8	11,255.7	11,387.0
MO S&T	4,604.0	4,594.1	4,799.9	4,982.6	5,323.0	5,452.9	5,860.4	6,162.2	6,376.5	6,453.0
St. Louis	9,224.0	9,162.0	9,451.9	9,467.5	9,546.9	9,578.5	10,031.8	10,227.7	10,188.8	10,121.0
Total	45,674.0	46,363.8	47,750.7	48,430.7	48,994.0	51,023.9	53,287.1	55,271.1	56,841.4	57,806.0

(Totals may not add due to rounding.)

Table 2.0 Headcounts, Full-time Equivalence, and Student Credit Hours by Location, Fall 2008 to Fall 2012

University of Missouri System

	On-Campus					Off-Campus					Total					5-yr. Change
	FS08	FS09	FS10	FS11	FS12	FS08	FS09	FS10	FS11	FS12	FS08	FS09	FS10	FS11	FS12	
Headcount by Student Level																
Undergraduate																
Fresh & Soph DS	19,280	19,833	20,398	21,047	21,450	28	46	66	60	64	19,308	19,879	20,464	21,107	21,514	11%
Junior & Senior DS	23,990	25,161	26,464	27,168	27,723	254	283	389	505	532	24,244	25,444	26,853	27,673	28,255	17%
Nondegree	<u>861</u>	<u>859</u>	<u>822</u>	<u>926</u>	<u>1,038</u>	<u>5,097</u>	<u>5,170</u>	<u>5,219</u>	<u>5,230</u>	<u>5,943</u>	<u>5,958</u>	<u>6,029</u>	<u>6,041</u>	<u>6,156</u>	<u>6,981</u>	<u>17%</u>
Total Undergraduate	44,131	45,853	47,684	49,141	50,211	5,379	5,499	5,674	5,795	6,539	49,510	51,352	53,358	54,936	56,750	15%
First Professional																
Dentistry (DDS)	399	401	405	420	425	0	0	0	0	0	399	401	405	420	425	7%
Law (JD)	945	943	932	901	879	0	0	0	0	0	945	943	932	901	879	-7%
Medicine (MD)	767	769	780	798	818	0	0	0	0	0	767	769	780	798	818	7%
Optometry (OD)	178	179	171	172	168	0	0	0	0	0	178	179	171	172	168	-6%
Pharmacy (DPharm)	298	339	352	283	328	0	0	0	80	93	298	339	352	363	421	41%
Vet. Med. (DVM)	<u>286</u>	<u>321</u>	<u>366</u>	<u>413</u>	<u>452</u>	<u>0</u>	<u>0</u>	<u>0</u>	<u>0</u>	<u>1</u>	<u>286</u>	<u>321</u>	<u>366</u>	<u>413</u>	<u>453</u>	<u>58%</u>
Total First Professional	2,873	2,952	3,006	2,987	3,070	0	0	0	80	94	2,873	2,952	3,006	3,067	3,164	10%
Graduate																
Masters & Ed. Spec.	7,629	7,907	8,150	7,975	7,629	1,802	2,156	2,053	2,330	2,240	9,431	10,063	10,203	10,305	9,869	5%
Doctoral	3,526	3,766	3,845	4,011	3,876	120	124	183	251	366	3,646	3,890	4,028	4,262	4,242	16%
Nondegree	<u>699</u>	<u>642</u>	<u>594</u>	<u>611</u>	<u>623</u>	<u>560</u>	<u>485</u>	<u>407</u>	<u>384</u>	<u>396</u>	<u>1,259</u>	<u>1,127</u>	<u>1,001</u>	<u>995</u>	<u>1,019</u>	<u>-19%</u>
Total Graduate	11,854	12,315	12,589	12,597	12,128	2,482	2,765	2,643	2,965	3,002	14,336	15,080	15,232	15,562	15,130	6%
Grand Total Headcount	58,858	61,120	63,279	64,725	65,409	7,861	8,264	8,317	8,840	9,635	66,719	69,384	71,596	73,565	75,044	12%
FTE Enrollments by Student Level																
Undergraduate	38,546.8	40,133.0	41,824.1	42,909.4	43,873.0	1,747.1	1,835.7	1,913.2	2,030.7	2,234.1	40,293.9	41,968.7	43,737.3	44,940.1	46,107.1	14%
First Professional	2,840.9	2,917.3	2,964.1	2,945.4	3,028.6	0.0	0.0	0.0	80.0	94.0	2,840.9	2,917.3	2,964.1	3,025.4	3,122.6	10%
Graduate	<u>6,875.1</u>	<u>7,204.0</u>	<u>7,447.0</u>	<u>7,574.5</u>	<u>7,265.6</u>	<u>1,014.0</u>	<u>1,197.2</u>	<u>1,122.6</u>	<u>1,301.3</u>	<u>1,310.3</u>	<u>7,889.1</u>	<u>8,401.1</u>	<u>8,569.6</u>	<u>8,875.9</u>	<u>8,575.8</u>	<u>9%</u>
Total FTE	48,262.8	50,254.2	52,235.2	53,429.4	54,167.1	2,761.1	3,032.9	3,035.8	3,412.1	3,638.4	51,023.9	53,287.1	55,271.0	56,841.4	57,805.5	13%
SCH Produced by Student Level																
Undergraduate	578,201.5	601,995.0	627,361.5	643,641.0	658,095.1	26,207.0	27,536.0	28,699.0	30,461.1	33,512.6	604,408.5	629,531.0	656,060.5	674,102.1	691,607.7	14%
First Professional	48,067.0	50,808.0	54,567.5	52,211.4	53,238.1	0.0	0.0	0.0	1,488.9	1,740.6	48,067.0	50,808.0	54,567.5	53,700.3	54,978.7	14%
Graduate	<u>82,498.5</u>	<u>86,447.5</u>	<u>89,364.5</u>	<u>90,894.4</u>	<u>87,186.5</u>	<u>12,168.0</u>	<u>14,366.0</u>	<u>13,470.5</u>	<u>15,616.0</u>	<u>15,723.5</u>	<u>94,666.5</u>	<u>100,813.5</u>	<u>102,835.0</u>	<u>106,510.4</u>	<u>102,910.0</u>	<u>9%</u>
Total SCH	708,767.0	739,250.5	771,293.5	786,746.8	798,519.7	38,375.0	41,902.0	42,169.5	47,566.0	50,976.7	747,142.0	781,152.5	813,463.0	834,312.8	849,496.4	14%

Source: EMSAS Fall Enrollment file

Table 2.1 Headcounts, Full-time Equivalence, and Student Credit Hours by Location, Fall 2008 to Fall 2012

	<u>On-Campus</u>					<u>Columbia</u> <u>Off-Campus</u>					<u>Total</u>					5-yr. Change
	FS08	FS09	FS10	FS11	FS12	FS08	FS09	FS10	FS11	FS12	FS08	FS09	FS10	FS11	FS12	
Headcount by Student Level																
Undergraduate																
Fresh & Soph DS	11,631	12,069	12,548	13,088	13,467	22	25	21	24	35	11,653	12,094	12,569	13,112	13,502	16%
Junior & Senior DS	10,827	11,247	11,811	12,304	12,754	168	187	222	270	333	10,995	11,434	12,033	12,574	13,087	19%
Nondegree	<u>229</u>	<u>200</u>	<u>166</u>	<u>233</u>	<u>289</u>	<u>103</u>	<u>71</u>	<u>66</u>	<u>73</u>	<u>82</u>	<u>332</u>	<u>271</u>	<u>232</u>	<u>306</u>	<u>371</u>	<u>12%</u>
Total Undergraduate	22,687	23,516	24,525	25,625	26,510	293	283	309	367	450	22,980	23,799	24,834	25,992	26,960	17%
First Professional																
Law (JD)	453	444	443	431	416	0	0	0	0	0	453	444	443	431	416	-8%
Medicine (MD)	387	385	388	392	402	0	0	0	0	0	387	385	388	392	402	4%
Vet. Med. (DVM)	<u>286</u>	<u>321</u>	<u>366</u>	<u>413</u>	<u>452</u>	<u>0</u>	<u>0</u>	<u>0</u>	<u>0</u>	<u>1</u>	<u>286</u>	<u>321</u>	<u>366</u>	<u>413</u>	<u>453</u>	<u>58%</u>
Total First Professional	1,126	1,150	1,197	1,236	1,270	0	0	0	0	1	1,126	1,150	1,197	1,236	1,271	13%
Graduate																
Masters & Ed. Spec.	2,261	2,243	2,287	2,408	2,423	962	1,238	1,190	1,126	1,058	3,223	3,481	3,477	3,534	3,481	8%
Doctoral	2,051	2,172	2,178	2,288	2,189	81	85	147	227	340	2,132	2,257	2,325	2,515	2,529	19%
Nondegree	<u>250</u>	<u>166</u>	<u>186</u>	<u>148</u>	<u>130</u>	<u>419</u>	<u>384</u>	<u>322</u>	<u>337</u>	<u>333</u>	<u>669</u>	<u>550</u>	<u>508</u>	<u>485</u>	<u>463</u>	<u>-31%</u>
Total Graduate	4,562	4,581	4,651	4,844	4,742	1,462	1,707	1,659	1,690	1,731	6,024	6,288	6,310	6,534	6,473	7%
Grand Total Headcount	28,375	29,247	30,373	31,705	32,522	1,755	1,990	1,968	2,057	2,182	30,130	31,237	32,341	33,762	34,704	15%
FTE Enrollments by Student Level																
Undergraduate	21,097.0	21,837.7	22,785.4	23,707.6	24,505.0	99.7	105.0	113.9	132.3	171.5	21,196.6	21,942.7	22,899.3	23,839.9	24,676.5	16%
First Professional	1,108.2	1,134.3	1,174.6	1,214.9	1,246.7	0.0	0.0	0.0	0.0	1.0	1,108.2	1,134.3	1,174.6	1,214.9	1,247.7	13%
Graduate	<u>2,951.1</u>	<u>2,996.1</u>	<u>3,071.5</u>	<u>3,257.0</u>	<u>3,224.3</u>	<u>584.3</u>	<u>724.3</u>	<u>693.0</u>	<u>708.6</u>	<u>696.4</u>	<u>3,535.3</u>	<u>3,720.4</u>	<u>3,764.5</u>	<u>3,965.6</u>	<u>3,920.7</u>	<u>11%</u>
Total FTE	25,156.3	25,968.2	27,031.5	28,179.5	28,976.0	683.9	829.3	806.9	840.9	868.9	25,840.2	26,797.4	27,838.4	29,020.4	29,844.9	15%
SCH Produced by Student Level																
Undergraduate	316,454.5	327,565.5	341,780.5	355,613.5	367,575.0	1,495.0	1,575.0	1,709.0	1,985.0	2,573.0	317,949.5	329,140.5	343,489.5	357,598.5	370,148.0	16%
First Professional	16,595.5	17,898.5	18,820.5	19,304.5	19,615.5	0.0	0.0	0.0	0.0	1.0	16,595.5	17,898.5	18,820.5	19,304.5	19,616.5	18%
Graduate	<u>35,413.0</u>	<u>35,953.5</u>	<u>36,858.0</u>	<u>39,084.5</u>	<u>38,692.0</u>	<u>7,011.0</u>	<u>8,691.0</u>	<u>8,315.5</u>	<u>8,503.0</u>	<u>8,357.0</u>	<u>42,424.0</u>	<u>44,644.5</u>	<u>45,173.5</u>	<u>47,587.5</u>	<u>47,049.0</u>	<u>11%</u>
Total SCH	368,463.0	381,417.5	397,459.0	414,002.5	425,882.5	8,506.0	10,266.0	10,024.5	10,488.0	10,931.0	376,969.0	391,683.5	407,483.5	424,490.5	436,813.5	16%

Source: EMSAS Fall Enrollment file

Table 2.2 Headcounts, Full-time Equivalence, and Student Credit Hours by Location, Fall 2008 to Fall 2012

Headcount by Student Level	Kansas City															5-yr. Change
	<u>On-Campus</u>					<u>Off-Campus</u>					<u>Total</u>					
	FS08	FS09	FS10	FS11	FS12	FS08	FS09	FS10	FS11	FS12	FS08	FS09	FS10	FS11	FS12	
Undergraduate																
Fresh & Soph DS	3,017	3,126	3,241	3,346	3,493	0	0	0	0	0	3,017	3,126	3,241	3,346	3,493	16%
Junior & Senior DS	4,330	4,591	4,943	5,086	4,937	4	4	2	27	17	4,334	4,595	4,945	5,113	4,954	14%
Nondegree	<u>307</u>	<u>313</u>	<u>268</u>	<u>269</u>	<u>306</u>	<u>1,603</u>	<u>1,347</u>	<u>1,396</u>	<u>1,394</u>	<u>1,861</u>	<u>1,910</u>	<u>1,660</u>	<u>1,664</u>	<u>1,663</u>	<u>2,167</u>	<u>13%</u>
Total Undergraduate	7,654	8,030	8,452	8,701	8,736	1,607	1,351	1,398	1,421	1,878	9,261	9,381	9,850	10,122	10,614	15%
First Professional																
Dentistry (DDS)	399	401	405	420	425	0	0	0	0	0	399	401	405	420	425	7%
Law (JD)	492	499	489	470	463	0	0	0	0	0	492	499	489	470	463	-6%
Medicine (MD)	380	384	392	406	416	0	0	0	0	0	380	384	392	406	416	<u>9%</u>
Pharmacy (DPharm)	<u>298</u>	<u>339</u>	<u>352</u>	<u>283</u>	<u>328</u>	<u>0</u>	<u>0</u>	<u>0</u>	<u>80</u>	<u>93</u>	<u>298</u>	<u>339</u>	<u>352</u>	<u>363</u>	<u>421</u>	<u>41%</u>
Total First Professional	1,569	1,623	1,638	1,579	1,632	0	0	0	80	93	1,569	1,623	1,638	1,659	1,725	10%
Graduate																
Masters & Ed. Spec.	2,670	2,801	2,890	2,709	2,638	53	32	3	80	77	2,723	2,833	2,893	2,789	2,715	0%
Doctoral	624	656	664	648	639	7	0	0	0	0	631	656	664	648	639	1%
Nondegree	<u>297</u>	<u>306</u>	<u>214</u>	<u>255</u>	<u>297</u>	<u>0</u>	<u>0</u>	<u>0</u>	<u>0</u>	<u>0</u>	<u>297</u>	<u>306</u>	<u>214</u>	<u>255</u>	<u>297</u>	<u>0%</u>
Total Graduate	3,591	3,763	3,768	3,612	3,574	60	32	3	80	77	3,651	3,795	3,771	3,692	3,651	0%
Grand Total Headcount	12,814	13,416	13,858	13,892	13,942	1,667	1,383	1,401	1,581	2,048	14,481	14,799	15,259	15,473	15,990	10%
FTE Enrollments by Student Level																
Undergraduate	6,272.8	6,647.9	7,047.1	7,214.4	7,233.9	389.3	324.5	347.5	371.3	480.8	6,662.1	6,972.4	7,394.6	7,585.7	7,715	16%
First Professional	1,554.7	1,603.9	1,618.5	1,558.5	1,613.9	0.0	0.0	0.0	80.0	93.0	1,554.7	1,603.9	1,618.5	1,638.5	1,707	10%
Graduate	<u>1,902.4</u>	<u>2,006.6</u>	<u>2,028.0</u>	<u>1,990.1</u>	<u>1,927.0</u>	<u>33.3</u>	<u>14.6</u>	<u>1.6</u>	<u>41.3</u>	<u>38.1</u>	<u>1,935.7</u>	<u>2,021.2</u>	<u>2,029.6</u>	<u>2,031.5</u>	<u>1,965</u>	<u>2%</u>
Total FTE	9,729.9	10,258.5	10,693.6	10,763.1	10,774.8	422.5	339.1	349.1	492.7	611.9	10,152.4	10,597.5	11,042.7	11,255.7	11,387	12%
SCH Produced by Student Level																
Undergraduate	94,092.0	99,719.0	105,707.0	108,216.0	108,509.1	5,839.0	4,867.0	5,213.0	5,570.1	7,212.6	99,931.0	104,586.0	110,920.0	113,786.1	115,722	16%
First Professional	27,905.5	29,238.5	32,192.0	29,432.9	30,173.6	0.0	0.0	0.0	1,488.9	1,739.6	27,905.5	29,238.5	32,192.0	30,921.8	31,913	14%
Graduate	<u>22,829.0</u>	<u>24,079.5</u>	<u>24,336.5</u>	<u>23,881.4</u>	<u>23,123.5</u>	<u>399.0</u>	<u>175.0</u>	<u>19.0</u>	<u>496.0</u>	<u>457.0</u>	<u>23,228.0</u>	<u>24,254.5</u>	<u>24,355.5</u>	<u>24,377.4</u>	<u>23,581</u>	<u>2%</u>
Total SCH	144,826.5	153,037.0	162,235.5	161,530.3	161,806.2	6,238.0	5,042.0	5,232.0	7,555.0	9,409.2	151,064.5	158,079.0	167,467.5	169,085.3	171,215	13%

Source: EMSAS Fall Enrollment file

Table 2.3 Headcounts, Full-time Equivalence, and Student Credit Hours by Location, Fall 2008 to Fall 2012

	<u>On-Campus</u>					<u>Missouri S&T</u> <u>Off-Campus</u>					<u>Total</u>					5-yr. Change
	FS08	FS09	FS10	FS11	FS12	FS08	FS09	FS10	FS11	FS12	FS08	FS09	FS10	FS11	FS12	
Headcount by Student Level																
Undergraduate																
Fresh & Soph DS	2,180	2,291	2,347	2,298	2,325	0	13	42	29	25	2,180	2,304	2,389	2,327	2,350	8%
Junior & Senior DS	2,693	2,829	2,994	3,154	3,285	2	12	74	123	117	2,695	2,841	3,068	3,277	3,402	26%
Nondegree	<u>24</u>	<u>36</u>	<u>39</u>	<u>48</u>	<u>84</u>	<u>12</u>	<u>25</u>	<u>7</u>	<u>19</u>	<u>5</u>	<u>36</u>	<u>61</u>	<u>46</u>	<u>67</u>	<u>89</u>	<u>147%</u>
Total Undergraduate	4,897	5,156	5,380	5,500	5,694	14	50	123	171	147	4,911	5,206	5,503	5,671	5,841	19%
Graduate																
Masters & Ed. Spec.	523	593	686	651	567	547	575	530	659	690	1,070	1,168	1,216	1,310	1,257	17%
Doctoral	345	401	440	504	494	19	23	26	24	23	364	424	466	528	517	42%
Nondegree	<u>2</u>	<u>3</u>	<u>13</u>	<u>3</u>	<u>4</u>	<u>20</u>	<u>13</u>	<u>7</u>	<u>9</u>	<u>26</u>	<u>22</u>	<u>16</u>	<u>20</u>	<u>12</u>	<u>30</u>	<u>36%</u>
Total Graduate	870	997	1,139	1,158	1,065	586	611	563	692	739	1,456	1,608	1,702	1,850	1,804	24%
Grand Total Headcount	5,767	6,153	6,519	6,658	6,759	600	661	686	863	886	6,367	6,814	7,205	7,521	7,645	20%
FTE Enrollments by Student Level																
Undergraduate	4,618.8	4,867.6	5,068.1	5,139.7	5,267.5	2.9	13.9	58.4	96.1	84.1	4,622	4,882	5,127	5,236	5,352	16%
Graduate	<u>587.8</u>	<u>703.0</u>	<u>796.9</u>	<u>809.0</u>	<u>727.1</u>	<u>243.4</u>	<u>275.9</u>	<u>238.8</u>	<u>331.6</u>	<u>374.2</u>	<u>831</u>	<u>979</u>	<u>1,036</u>	<u>1,141</u>	<u>1,101</u>	<u>32%</u>
Total FTE	5,206.6	5,570.6	5,865.0	5,948.7	5,994.5	246.3	289.9	297.2	427.7	458.3	5,452.9	5,860.4	6,162.2	6,376.5	6,452.9	18%
SCH Produced by Student Level																
Undergraduate	69,282	73,014	76,021	77,096	79,012	43	209	876	1,442	1,262	69,325	73,223	76,897	78,538	80,274	16%
Graduate	<u>7,054</u>	<u>8,436</u>	<u>9,563</u>	<u>9,709</u>	<u>8,725</u>	<u>2,921</u>	<u>3,311</u>	<u>2,866</u>	<u>3,979</u>	<u>4,491</u>	<u>9,975</u>	<u>11,747</u>	<u>12,429</u>	<u>13,688</u>	<u>13,216</u>	<u>32%</u>
Total SCH	76,336	81,450	85,584	86,804	87,737	2,964	3,520	3,742	5,421	5,753	79,300	84,970	89,326	92,225	93,490	18%

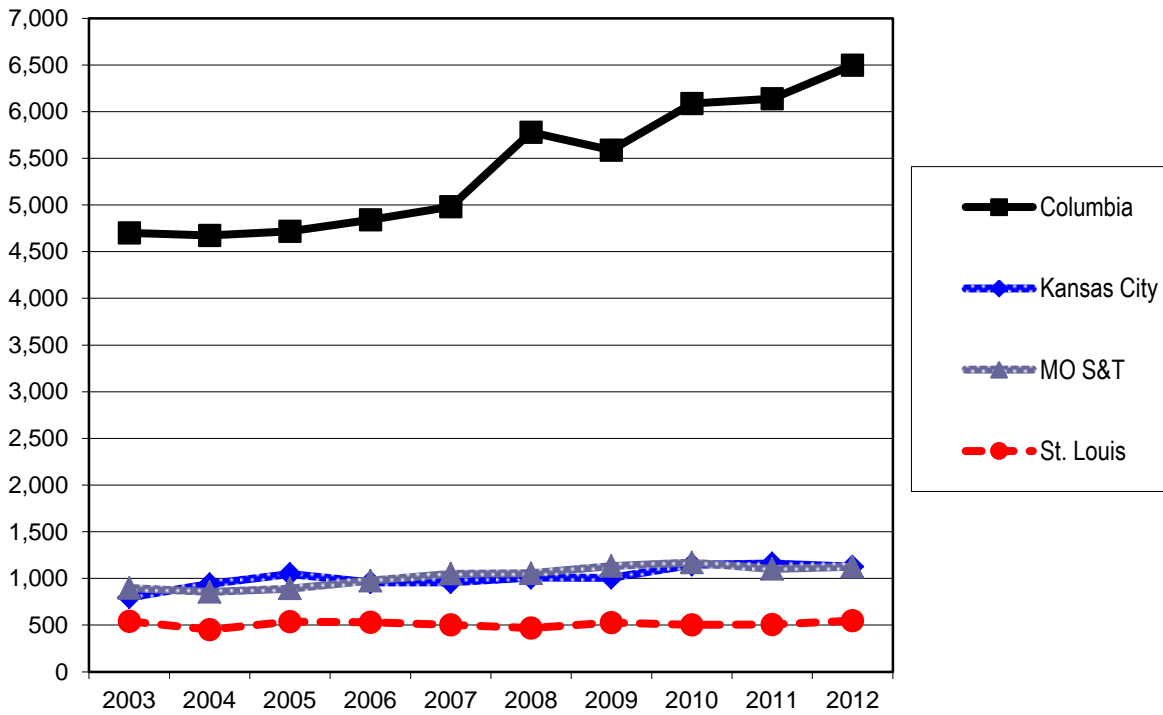
Source: EMSAS Fall Enrollment file

Table 2.4 Headcounts, Full-time Equivalence, and Student Credit Hours by Location, Fall 2008 to Fall 2012

	<u>On-Campus</u>					<u>St. Louis</u> <u>Off-Campus</u>					<u>Total</u>					5-yr. Change
	FS08	FS09	FS10	FS11	FS12	FS08	FS09	FS10	FS11	FS12	FS08	FS09	FS10	FS11	FS12	
Headcount by Student Level																
Undergraduate																
Fresh & Soph DS	2,452	2,347	2,262	2,315	2,165	6	8	3	7	4	2,458	2,355	2,265	2,322	2,169	-12%
Junior & Senior DS	6,140	6,494	6,716	6,624	6,747	80	80	91	85	65	6,220	6,574	6,807	6,709	6,812	10%
Nondegree	<u>301</u>	<u>310</u>	<u>349</u>	<u>376</u>	<u>359</u>	<u>3,379</u>	<u>3,727</u>	<u>3,750</u>	<u>3,744</u>	<u>3,995</u>	<u>3,680</u>	<u>4,037</u>	<u>4,099</u>	<u>4,120</u>	<u>4,354</u>	<u>18%</u>
Total Undergraduate	8,893	9,151	9,327	9,315	9,271	3,465	3,815	3,844	3,836	4,064	12,358	12,966	13,171	13,151	13,335	8%
First Professional																
Optometry (OD)	<u>178</u>	<u>179</u>	<u>171</u>	<u>172</u>	<u>168</u>	<u>0</u>	<u>0</u>	<u>0</u>	<u>0</u>	<u>0</u>	<u>178</u>	<u>179</u>	<u>171</u>	<u>172</u>	<u>168</u>	<u>-6%</u>
Total First Professional	178	179	171	172	168	0	0	0	0	0	178	179	171	172	168	-6%
Graduate																
Masters & Ed. Spec.	2,175	2,270	2,287	2,207	2,001	240	311	330	465	415	2,415	2,581	2,617	2,672	2,416	0%
Doctoral	506	537	563	571	554	13	16	10	0	3	519	553	573	571	557	7%
Nondegree	<u>150</u>	<u>167</u>	<u>181</u>	<u>205</u>	<u>192</u>	<u>121</u>	<u>88</u>	<u>78</u>	<u>38</u>	<u>37</u>	<u>271</u>	<u>255</u>	<u>259</u>	<u>243</u>	<u>229</u>	<u>-15%</u>
Total Graduate	2,831	2,974	3,031	2,983	2,747	374	415	418	503	455	3,205	3,389	3,449	3,486	3,202	0%
Grand Total Headcount	11,902	12,304	12,529	12,470	12,186	3,839	4,230	4,262	4,339	4,519	15,741	16,534	16,791	16,809	16,705	6%
FTE Enrollments by Student Level																
Undergraduate	6,558.2	6,779.8	6,923.5	6,847.7	6,866.6	1,255.3	1,392.3	1,393.4	1,430.9	1,497.7	7,814	8,172	8,317	8,279	8,364	7%
First Professional	178.0	179.0	171.0	172.0	168.0	0.0	0.0	0.0	0.0	0.0	178	179	171	172	168	-6%
Graduate	<u>1,433.8</u>	<u>1,498.2</u>	<u>1,550.6</u>	<u>1,518.3</u>	<u>1,387.2</u>	<u>153.1</u>	<u>182.4</u>	<u>189.2</u>	<u>219.8</u>	<u>201.6</u>	<u>1,587</u>	<u>1,681</u>	<u>1,740</u>	<u>1,738</u>	<u>1,589</u>	<u>0%</u>
Total FTE	8,170.0	8,457.0	8,645.1	8,538.1	8,421.8	1,408.4	1,574.7	1,582.6	1,650.8	1,699.3	9,578.4	10,031.8	10,227.7	10,188.8	10,121.0	6%
SCH Produced by Student Level																
Undergraduate	98,373	101,697	103,853	102,716	102,999	18,830	20,885	20,901	21,464	22,465	117,203	122,582	124,754	124,180	125,464	7%
First Professional	3,566	3,671	3,555	3,474	3,449	0	0	0	0	0	3,566	3,671	3,555	3,474	3,449	-3%
Graduate	<u>17,203</u>	<u>17,979</u>	<u>18,608</u>	<u>18,220</u>	<u>16,646</u>	<u>1,837</u>	<u>2,189</u>	<u>2,270</u>	<u>2,638</u>	<u>2,419</u>	<u>19,040</u>	<u>20,168</u>	<u>20,878</u>	<u>20,858</u>	<u>19,065</u>	<u>0%</u>
Total SCH	119,142	123,347	126,016	124,410	123,094	20,667	23,074	23,171	24,102	24,884	139,809	146,421	149,187	148,512	147,978	6%

Source: EMSAS Fall Enrollment file

Figure 3a. First-time College Freshmen History, 2003 to 2012

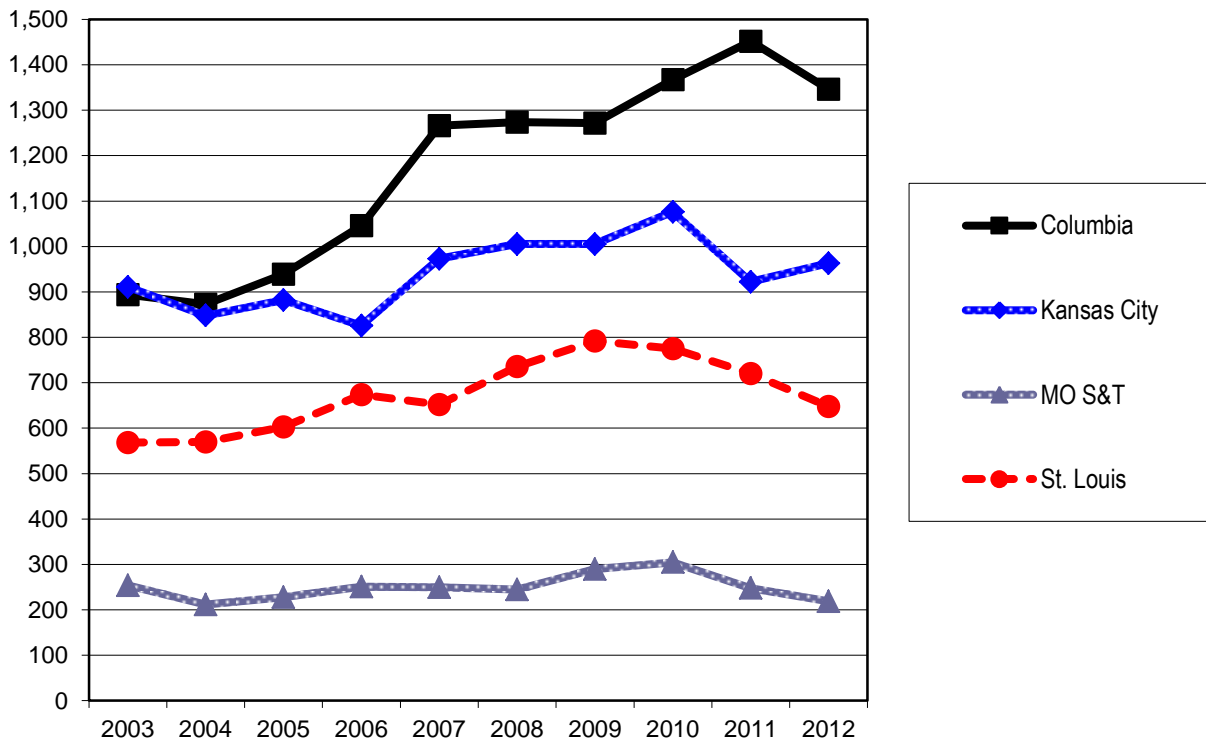


Source: EMSAS Fall Enrollment file
IR&P/LCB 10/31/12

First-time College Freshmen History, 2003 to 2012

Campus	2003	2004	2005	2006	2007	2008	2009	2010	2011	2012
Columbia	4,702	4,673	4,720	4,842	4,981	5,780	5,589	6,087	6,137	6,498
Kansas City	799	939	1,048	959	959	1,008	1,007	1,147	1,161	1,125
MO S&T	897	856	892	977	1,050	1,055	1,132	1,170	1,101	1,125
St. Louis	542	451	536	530	502	468	527	502	508	547
Total	6,940	6,919	7,196	7,308	7,492	8,311	8,255	8,906	8,907	9,295

Figure 3b. New Graduate Student History by Campus, 2003 to 2012

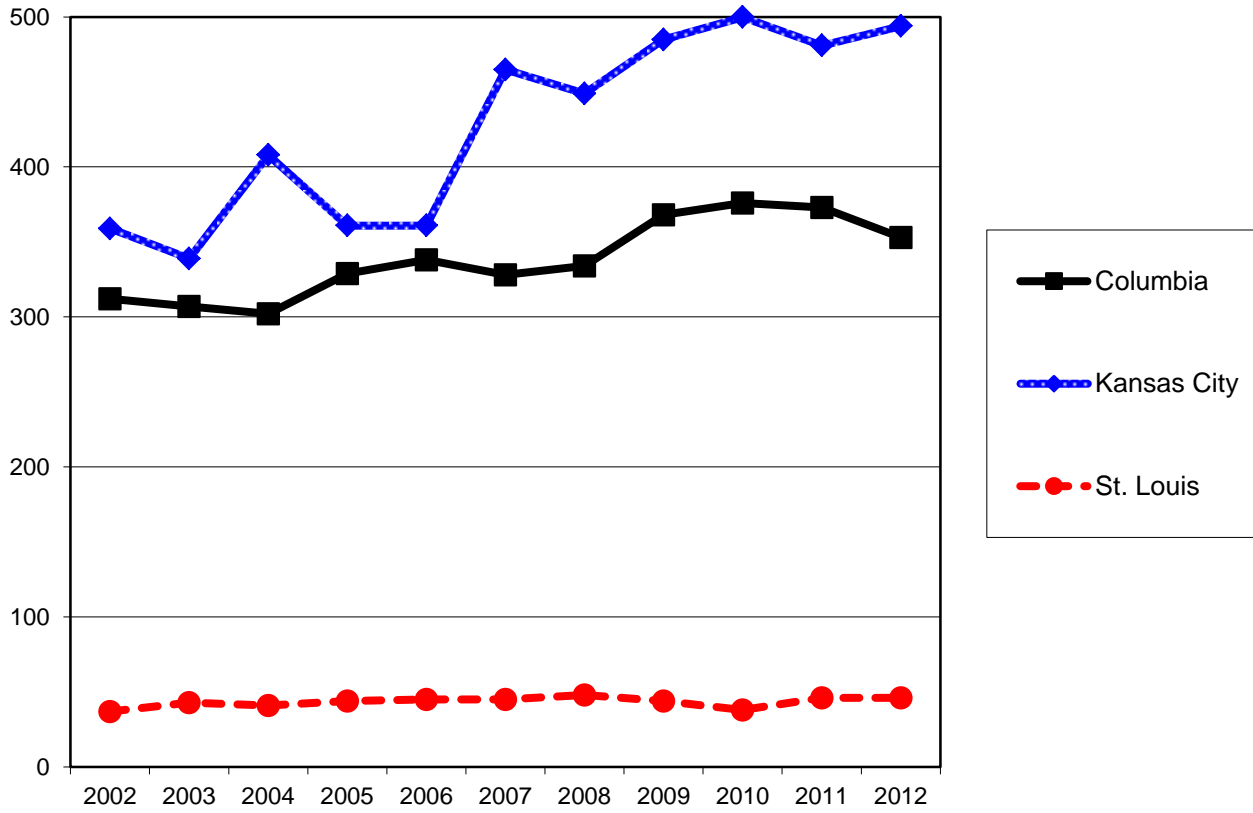


Source: EMSAS Fall Enrollment file
IR&P/LCB 10/31/12

New Graduate Student History by Campus, 2003 to 2012

Campus	2003	2004	2005	2006	2007	2008	2009	2010	2011	2012
Columbia	894	873	939	1,046	1,266	1,274	1,272	1,367	1452	1346
Kansas City	911	848	882	826	973	1,005	1,005	1,076	922	963
MO S&T	254	212	228	251	250	245	290	305	248	219
St. Louis	568	570	603	674	652	736	792	775	720	648
Total	2,627	2,503	2,652	2,797	3,141	3,260	3,359	3,523	3,342	3,176

Figure 3c. New First Professional Student History by Campus, 2003 to 2012



Source: EMSAS Fall Enrollment file
IR&P/LCB 10/31/12

New First Professional Student History By Campus, 2003 to 2012

Campus	2002	2003	2004	2005	2006	2007	2008	2009	2010	2011	2012
Columbia	312	307	302	329	338	328	334	368	376	373	353
Kansas City	359	339	408	361	361	465	449	485	500	481	494
St. Louis	37	43	41	44	45	45	48	44	38	46	46
Total	708	689	751	734	744	838	831	897	914	900	893

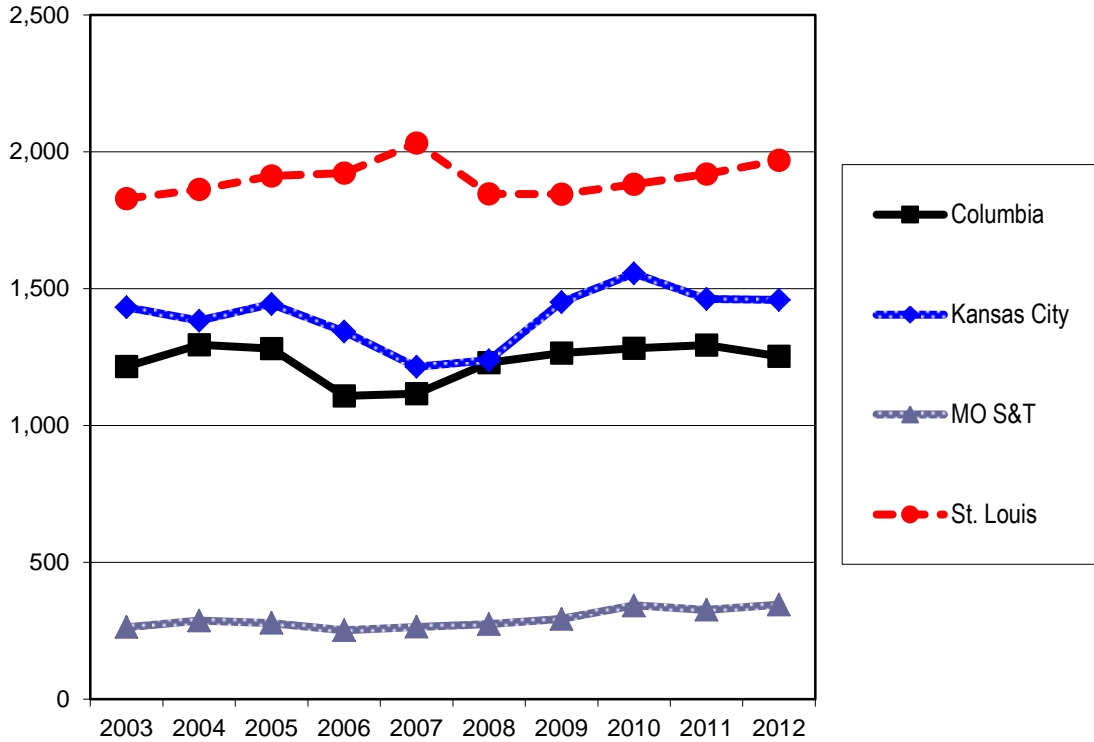
Table 3. On-Campus New Student Headcount, Fall 2008 - Fall 2012

		2008	2009	2010	2011	2012	5 yr. Change
Columbia							
Freshmen							
	Degree-Seeking	5,780	5,589	6,087	6,137	6,498	12%
	Non Degree-Seeking	0	0	0	0	0	
Undergraduate Transfers							
	Degree-Seeking	1,077	1,108	1,159	1,261	1,207	12%
	Non Degree-Seeking	153	157	123	33	46	-70%
Professional							
	Degree-Seeking	334	368	376	373	353	6%
Graduate							
	Degree-Seeking	1,167	1,169	1,248	1,353	1,257	8%
	Non Degree-Seeking	107	103	119	99	89	-17%
Kansas City							
Freshmen							
	Degree-Seeking	1,008	1,004	1,145	1,159	1,125	12%
	Non Degree-Seeking	0	3	2	2	0	
Undergraduate Transfers							
	Degree-Seeking	1,238	1,449	1,554	1,462	1,459	18%
	Non Degree-Seeking	0	1	2	0	0	
Professional							
	Degree-Seeking	447	481	500	481	494	11%
	Non Degree-Seeking	2	4	0	0	0	-100%
Graduate							
	Degree-Seeking	1,005	1,004	1,076	922	963	-4%
	Non Degree-Seeking	0	1	0	0	0	
Missouri S&T							
Freshmen							
	Degree-Seeking	1,045	1,108	1,149	1,096	1,124	8%
	Non Degree-Seeking	10	24	21	5	1	-90%
Undergraduate Transfers							
	Degree-Seeking	272	292	341	326	345	27%
	Non Degree-Seeking	2	1	1	0	0	
Graduate							
	Degree-Seeking	244	289	296	247	218	-11%
	Non Degree-Seeking	1	1	9	1	1	0%
St Louis							
Freshmen							
	Degree-Seeking	468	525	497	504	546	17%
	Non Degree-Seeking	11	2	5	4	1	-91%
Undergraduate Transfers							
	Degree-Seeking	1,667	1,673	1,696	1,726	1,795	8%
	Non Degree-Seeking	179	172	185	193	174	-3%
Professional							
	Degree-Seeking	48	44	38	46	46	-4%
Graduate							
	Degree-Seeking	685	750	721	670	600	-12%
	Non Degree-Seeking	51	42	54	50	48	-6%

Source: EMSAS Fall Enrollment file

IR&P/LCB 10/31/12

Figure 4. First-time On-Campus Undergraduate Transfer Student History by Campus, 2003 to 2012



Source: EMSAS Fall Enrollment file
IR&P/LCB 10/31/12

First-time On-Campus Undergraduate Transfer Student History by Campus, 2003 to 2012

Campus	2003	2004	2005	2006	2007	2008	2009	2010	2011	2012
Columbia	1,215	1,295	1,281	1,108	1,116	1,230	1,265	1,282	1,294	1,253
Kansas City	1,432	1,382	1,443	1,343	1,214	1,238	1,450	1,556	1,462	1,459
MO S&T	263	287	278	252	264	274	293	342	326	345
St. Louis	1,829	1,863	1,912	1,922	2,032	1,846	1,845	1,881	1,919	1,969
Total	4,739	4,827	4,914	4,625	4,626	4,588	4,853	5,061	5,001	5,026

Table 4.0a Resident Headcount History by Student Level, Load, and Campus, Fall 2008 to Fall 2012

Level	2008	2009	2010	2011	2012	5 yr. Change
UNIVERSITY OF MISSOURI SYSTEM FULL-TIME RESIDENT HEADCOUNT						
Undergraduate						
Freshman & Soph DS	14,380	14,514	14,609	14,856	14,641	2%
Junior & Senior DS	16,556	17,441	18,223	18,419	18,715	13%
Nondegree	130	126	151	157	160	23%
Total System Full-time Resident Undergraduate	31,066	32,081	32,983	33,432	33,516	8%
First Professional						
Dentistry (DDS)	276	286	298	308	308	12%
Law (JD)	776	797	755	732	692	-11%
Medicine (MD)	652	649	633	644	656	1%
Optometry (OD)	89	86	74	65	60	-33%
Pharmacy (Dpharm)	278	320	327	335	390	40%
Vet. Med (DVM)	259	264	301	344	386	49%
Total System Full-time Resident 1st Professional	2,330	2,402	2,388	744	836	-64%
Graduate						
Masters & Ed. Spec.	2,036	2,311	2,377	2,308	2,106	3%
Doctoral	501	544	996	1,013	1,032	106%
Nondegree	51	68	57	57	58	14%
Total System Full-time Resident Graduate	2,588	2,923	3,430	3,378	3,196	23%
Total System Full-time Resident Headcount	35,984	37,406	38,801	37,554	37,548	4%
UNIVERSITY OF MISSOURI SYSTEM PART-TIME RESIDENT HEADCOUNT						
Undergraduate						
Freshman & Soph DS	1,083	1,059	992	1,050	963	-11%
Junior & Senior DS	4,142	4,266	4,518	4,701	4,786	16%
Nondegree	5,477	5,568	5,547	5,592	6,366	16%
Total System Part-time Resident Undergraduate	10,702	10,893	11,057	11,343	12,115	13%
First Professional						
Law (JD)	33	26	35	35	40	21%
Medicine (MD)	0	0	0	0	0	
Vet. Med (DVM)	0	0	0	0	0	
Total System Part-time Resident 1st Professional	33	26	35	35	40	21%
Graduate						
Masters & Ed. Spec.	3,953	4,164	4,222	4,106	3,751	-5%
Doctoral	1,197	1,254	835	892	854	-29%
Nondegree	905	825	689	701	666	-26%
Total System Part-time Resident Graduate	6,055	6,243	5,746	5,699	5,271	-13%
Total System Part-time Resident Headcount	16,790	17,162	16,838	17,077	17,426	4%
UNIVERSITY OF MISSOURI SYSTEM TOTAL RESIDENT HEADCOUNT						
Undergraduate						
Freshman & Soph DS	15,463	15,573	15,601	15,906	15,604	1%
Junior & Senior DS	20,698	21,707	22,741	23,120	23,501	14%
Nondegree	5,607	5,694	5,698	5,749	6,526	16%
Total System Resident Undergraduate	41,768	42,974	44,040	44,775	45,631	9%
First Professional						
Dentistry (DDS)	276	286	298	308	308	12%
Law (JD)	809	823	790	767	732	-10%
Medicine (MD)	652	649	633	644	656	1%
Optometry (OD)	89	86	74	65	60	-33%
Pharmacy (Dpharm)	278	320	327	335	390	40%
Vet. Med (DVM)	259	264	301	344	386	49%
Total System Resident 1st Professional	2,363	2,428	2,423	2,463	2,532	7%
Graduate						
Masters & Ed. Spec.	5,989	6,475	6,599	6,414	5,857	-2%
Doctoral	1,698	1,798	1,831	1,905	1,886	11%
Nondegree	956	893	746	758	724	-24%
Total System Resident Graduate	8,643	9,166	9,176	9,077	8,467	-2%
Grand Total System Resident Headcount	52,774	54,568	55,639	56,315	56,630	7%

Table 4.0b Non-Resident Headcount History by Student Level, Load, and Campus, Fall 2008 to Fall 2012

Level	2008	2009	2010	2011	2012	5 yr. Change
UNIVERSITY OF MISSOURI SYSTEM FULL-TIME NON-RESIDENT HEADCOUNT						
Undergraduate						
Freshman & Soph DS	3,649	4,119	4,629	4,928	5,599	53%
Junior & Senior DS	2,954	3,128	3,469	3,819	3,996	35%
Nondegree	151	142	168	241	290	92%
Total System Full-time Non-Resident Undergraduate	6,754	7,389	8,266	8,988	9,885	46%
First Professional						
Dentistry (DDS)	123	115	107	112	117	-5%
Law (JD)	126	112	136	127	136	8%
Medicine (MD)	115	120	147	154	162	41%
Optometry (OD)	89	93	97	107	108	21%
Pharmacy (Dpharm)	20	19	25	28	31	55%
Vet. Med (DVM)	27	57	65	69	67	148%
Total System Full-time Non-Resident 1st Professional	500	516	577	597	621	24%
Graduate						
Masters & Ed. Spec.	1,774	1,875	1,770	1,943	2,052	16%
Doctoral	1,108	1,208	1,597	1,695	1,683	52%
Nondegree	37	31	41	36	38	3%
Total System Full-time Non-Resident Graduate	2,919	3,114	3,408	3,674	3,773	29%
Total System Full-time Non-Resident Headcount	10,173	11,019	12,251	13,259	14,279	40%
UNIVERSITY OF MISSOURI SYSTEM PART-TIME NON-RESIDENT HEADCOUNT						
Undergraduate						
Freshman & Soph DS	195	187	234	273	311	59%
Junior & Senior DS	592	609	643	734	758	28%
Nondegree	201	193	175	166	165	-18%
Total System Part-time Non-Resident Undergraduate	988	989	1,052	1,173	1,234	25%
First Professional						
Law (JD)	10	8	6	7	11	10%
Medicine (MD)	0	0	0	0	0	-
Total System Part-time Non-Resident 1st Professional	10	8	6	7	11	10%
Graduate						
Masters & Ed. Spec.	1,668	1,713	1,834	1,948	1,960	18%
Doctoral	840	884	600	662	673	-20%
Nondegree	266	203	214	201	257	-3%
Total System Part-time Non-Resident Graduate	2,774	2,800	2,648	2,811	2,890	4%
Total System Part-time Non-Resident Headcount	3,772	3,797	3,706	3,991	4,135	10%
UNIVERSITY OF MISSOURI SYSTEM TOTAL NON-RESIDENT HEADCOUNT						
Undergraduate						
Freshman & Soph DS	3,844	4,306	4,863	5,201	5,910	54%
Junior & Senior DS	3,546	3,737	4,112	4,553	4,754	34%
Nondegree	352	335	343	407	455	29%
Total System Non-Resident Undergraduate	7,742	8,378	9,318	10,161	11,119	44%
First Professional						
Dentistry (DDS)	123	115	107	112	117	-5%
Law (JD)	136	120	142	134	147	8%
Medicine (MD)	115	120	147	154	162	41%
Optometry (OD)	89	93	97	107	108	21%
Pharmacy (Dpharm)	20	19	25	28	31	55%
Vet. Med (DVM)	27	57	65	69	67	148%
Total System Non-Resident 1st Professional	510	524	583	604	632	24%
Graduate						
Masters & Ed. Spec.	3,442	3,588	3,604	3,891	4,012	17%
Doctoral	1,948	2,092	2,197	2,357	2,356	21%
Nondegree	303	234	255	237	295	-3%
Total System Non-Resident Graduate	5,693	5,914	6,056	6,485	6,663	17%
Grand Total System Non-Resident Headcount	13,945	14,816	15,957	17,250	18,414	32%

Table 4.1a Resident Headcount History by Student Level, Load, and Campus, Fall 2008 to Fall 2012

Level	2008	2009	2010	2011	2012	5 yr. Change
UNIVERSITY OF MISSOURI-COLUMBIA FULL-TIME RESIDENT HEADCOUNT						
Undergraduate						
Freshman & Soph DS	9,079	9,099	9,137	9,315	9,191	1%
Junior & Senior DS	8,967	9,294	9,675	9,922	10,046	12%
Nondegree	2	2	1	2	3	50%
Total MU Full-time Resident Undergraduate	18,048	18,395	18,813	19,239	19,240	7%
First Professional						
Law (JD)	398	409	398	402	367	-8%
Medicine (MD)	375	375	372	377	384	2%
Vet. Med (DVM)	259	264	301	344	386	49%
Total MU Full-time Resident 1st Professional	1,032	1,048	1,071	1,123	1,137	10%
Graduate						
Masters & Ed. Spec.	1,054	1,191	1,157	1,133	1,112	6%
Doctoral	322	376	761	750	791	146%
Nondegree	33	29	26	23	26	-21%
Total MU Full-time Resident Graduate	1,409	1,596	1,944	1,906	1,929	37%
Total MU Full-time Resident Headcount	20,489	21,039	21,828	22,268	22,306	9%
UNIVERSITY OF MISSOURI-COLUMBIA PART-TIME RESIDENT HEADCOUNT						
Undergraduate						
Freshman & Soph DS	249	257	229	266	245	-2%
Junior & Senior DS	698	797	843	885	988	42%
Nondegree	213	186	139	153	199	-7%
Total MU Part-time Resident Undergraduate	1,160	1,240	1,211	1,304	1,432	23%
First Professional						
Law (JD)	14	4	14	11	20	43%
Medicine (MD)	0	0	0	0	0	
Vet. Med (DVM)	0	0	0	0	0	
Total MU Part-time Resident 1st Professional	14	4	14	11	20	43%
Graduate						
Masters & Ed. Spec.	1,012	1,059	1,100	1,116	1,043	3%
Doctoral	659	679	318	416	368	-44%
Nondegree	469	381	357	345	337	-28%
Total MU Part-time Resident Graduate	2,140	2,119	1,775	1,877	1,748	-18%
Total MU Part-time Resident Headcount	3,314	3,363	3,000	3,192	3,200	-3%
UNIVERSITY OF MISSOURI-COLUMBIA TOTAL RESIDENT HEADCOUNT						
Undergraduate						
Freshman & Soph DS	9,328	9,356	9,366	9,581	9,436	1%
Junior & Senior DS	9,665	10,091	10,518	10,807	11,034	14%
Nondegree	215	188	140	155	202	-6%
Total MU Resident Undergraduate	19,208	19,635	20,024	20,543	20,672	8%
First Professional						
Law (JD)	412	413	412	413	387	-6%
Medicine (MD)	375	375	372	377	384	2%
Vet. Med (DVM)	259	264	301	344	386	49%
Total MU Resident 1st Professional	1,046	1,052	1,085	1,134	1,157	11%
Graduate						
Masters & Ed. Spec.	2,066	2,250	2,257	2,249	2,155	4%
Doctoral	981	1,055	1,079	1,166	1,159	18%
Nondegree	502	410	383	368	363	-28%
Total MU Resident Graduate	3,549	3,715	3,719	3,783	3,677	4%
Grand Total MU Resident Headcount	23,803	24,402	24,828	25,460	25,506	7%

Table 4.1b Non-Resident Headcount History by Student Level, Load, and Campus, Fall 2008 to Fall 2012

Level	2008	2009	2010	2011	2012	5 yr. Change
UNIVERSITY OF MISSOURI-COLUMBIA FULL-TIME NON-RESIDENT HEADCOUNT						
Undergraduate						
Freshman & Soph DS	2,265	2,658	3,137	3,417	3,923	73%
Junior & Senior DS	1,249	1,274	1,420	1,644	1,886	51%
Nondegree	49	44	53	113	129	163%
Total MU Full-time Non-Resident Undergraduate	3,563	3,976	4,610	5,174	5,938	67%
First Professional						
Law (JD)	40	31	30	18	27	-33%
Medicine (MD)	12	10	16	15	18	50%
Vet. Med (DVM)	27	57	65	69	67	148%
Total MU Full-time Non-Resident 1st Professional	79	98	111	102	112	42%
Graduate						
Masters & Ed. Spec.	678	714	674	797	849	25%
Doctoral	671	709	999	1,067	1,073	60%
Nondegree	25	17	20	24	26	4%
Total MU Full-time Non-Resident Graduate	1,374	1,440	1,693	1,888	1,948	42%
Total MU Full-time Non-Resident Headcount	5,016	5,514	6,414	7,164	7,998	59%
UNIVERSITY OF MISSOURI-COLUMBIA PART-TIME NON-RESIDENT HEADCOUNT						
Undergraduate						
Freshman & Soph DS	60	80	66	114	143	138%
Junior & Senior DS	81	69	95	123	167	106%
Nondegree	68	39	39	38	40	-41%
Total MU Part-time Non-Resident Undergraduate	209	188	200	275	350	67%
First Professional						
Law (JD)	1	0	1	0	2	100%
Medicine (MD)	0	0	0	0	0	
Vet. Med (DVM)	0	0	0	0	0	
Total MU Part-time Non-Resident 1st Professional	1	0	1	0	2	100%
Graduate						
Masters & Ed. Spec.	479	517	546	488	477	0%
Doctoral	480	493	247	282	297	-38%
Nondegree	142	123	105	93	74	-48%
Total MU Part-time Non-Resident Graduate	1,101	1,133	898	863	848	-23%
Total MU Part-time Non-Resident Headcount	1,311	1,321	1,099	1,138	1,200	-8%
UNIVERSITY OF MISSOURI-COLUMBIA TOTAL NON-RESIDENT HEADCOUNT						
Undergraduate						
Freshman & Soph DS	2,325	2,738	3,203	3,531	4,066	75%
Junior & Senior DS	1,330	1,343	1,515	1,767	2,053	54%
Nondegree	117	83	92	151	169	44%
Total MU Non-Resident Undergraduate	3,772	4,164	4,810	5,449	6,288	67%
First Professional						
Law (JD)	41	31	31	18	29	-29%
Medicine (MD)	12	10	16	15	18	50%
Vet. Med (DVM)	27	57	65	69	67	148%
Total MU Non-Resident 1st Professional	80	98	112	102	114	43%
Graduate						
Masters & Ed. Spec.	1,157	1,231	1,220	1,285	1,326	15%
Doctoral	1,151	1,202	1,246	1,349	1,370	19%
Nondegree	167	140	125	117	100	-40%
Total MU Non-Resident Graduate	2,475	2,573	2,591	2,751	2,796	13%
Grand Total MU Non-Resident Headcount	6,327	6,835	7,513	8,302	9,198	45%

Table 4.2a Resident Headcount History by Student Level, Load, and Campus, Fall 2008 to Fall 2012

Level	2008	2009	2010	2011	2012	5 yr. Change
UNIVERSITY OF MISSOURI-KANSAS CITY FULL-TIME RESIDENT HEADCOUNT						
Undergraduate						
Freshman & Soph DS	1,987	2,067	2,125	2,183	2,241	13%
Junior & Senior DS	2,226	2,421	2,668	2,631	2,563	15%
Nondegree	17	6	11	7	8	-53%
Total UMKC Full-time Resident Undergraduate	4,230	4,494	4,804	4,821	4,812	14%
First Professional						
Dentistry (DDS)	276	286	298	308	308	12%
Law (JD)	378	388	357	330	325	-14%
Medicine (MD)	277	274	261	267	272	-2%
Pharmacy (Dpharm)	278	320	327	335	390	40%
Total UMKC Full-time Resident 1st Professional	1,209	1,268	1,243	1,240	1,295	7%
Graduate						
Masters & Ed. Spec.	435	492	534	522	452	4%
Doctoral	45	34	51	53	50	11%
Nondegree	2	18	1	0	4	100%
Total UMKC Full-time Resident Graduate	482	544	586	575	506	5%
Total UMKC Full-time Resident Headcount	5,921	6,306	6,633	6,636	6,613	12%
UNIVERSITY OF MISSOURI-KANSAS CITY PART-TIME RESIDENT HEADCOUNT						
Undergraduate						
Freshman & Soph DS	278	270	269	305	303	9%
Junior & Senior DS	857	817	808	895	882	3%
Nondegree	1,759	1,499	1,483	1,495	1,974	12%
Total UMKC Part-time Resident Undergraduate	2,894	2,586	2,560	2,695	3,159	9%
First Professional						
Law (JD)	19	22	21	24	20	5%
Total UMKC Part-time Resident 1st Professional	19	22	21	24	20	5%
Graduate						
Masters & Ed. Spec.	1,073	1,110	1,124	1,058	1,000	-7%
Doctoral	204	216	192	164	172	-16%
Nondegree	226	221	152	187	159	-30%
Total UMKC Part-time Resident Graduate	1,503	1,547	1,468	1,409	1,331	-11%
Total UMKC Part-time Resident Headcount	4,416	4,155	4,049	4,128	4,510	2%
UNIVERSITY OF MISSOURI-KANSAS CITY TOTAL RESIDENT HEADCOUNT						
Undergraduate						
Freshman & Soph DS	2,265	2,337	2,394	2,488	2,544	12%
Junior & Senior DS	3,083	3,238	3,476	3,526	3,445	12%
Nondegree	1,776	1,505	1,494	1,502	1,982	12%
Total UMKC Resident Undergraduate	7,124	7,080	7,364	7,516	7,971	12%
First Professional						
Dentistry (DDS)	276	286	298	308	308	12%
Law (JD)	397	410	378	354	345	-13%
Medicine (MD)	277	274	261	267	272	-2%
Pharmacy (Dpharm)	278	320	327	335	390	40%
Total UMKC Resident 1st Professional	1,228	1,290	1,264	1,264	1,315	7%
Graduate						
Masters & Ed. Spec.	1,508	1,602	1,658	1,580	1,452	-4%
Doctoral	249	250	243	217	222	-11%
Nondegree	228	239	153	187	163	-29%
Total UMKC Resident Graduate	1,985	2,091	2,054	1,984	1,837	-7%
Grand Total UMKC Resident Headcount	10,337	10,461	10,682	10,764	11,123	8%

Table 4.2b Non-Resident Headcount History by Student Level, Load, and Campus, Fall 2008 to Fall 2012

Level	2008	2009	2010	2011	2012	5 yr. Change
UNIVERSITY OF MISSOURI-KANSAS CITY FULL-TIME NON-RESIDENT HEADCOUNT						
Undergraduate						
Freshman & Soph DS	658	712	753	747	835	27%
Junior & Senior DS	933	1,012	1,117	1,202	1,153	24%
Nondegree	41	46	70	80	94	129%
Total UMKC Full-time Non-Resident Undergraduate	1,632	1,770	1,940	2,029	2,082	28%
First Professional						
Dentistry (DDS)	123	115	107	112	117	-5%
Law (JD)	86	81	106	109	109	27%
Medicine (MD)	103	110	131	139	144	40%
Pharmacy (Dpharm)	20	19	25	28	31	55%
Total UMKC Full-time Non-Resident 1st Professional	332	325	369	388	401	21%
Graduate						
Masters & Ed. Spec.	580	556	520	556	576	-1%
Doctoral	152	150	132	130	131	-14%
Nondegree	2	6	2	6	6	200%
Total UMKC Full-time Non-Resident Graduate	734	712	654	692	713	-3%
Total UMKC Full-time Non-Resident Headcount	2,698	2,807	2,963	3,109	3,196	18%
UNIVERSITY OF MISSOURI-KANSAS CITY PART-TIME NON-RESIDENT HEADCOUNT						
Undergraduate						
Freshman & Soph DS	93	77	94	111	114	23%
Junior & Senior DS	318	345	352	385	356	12%
Nondegree	94	109	100	81	91	-3%
Total UMKC Part-time Non-Resident Undergraduate	505	531	546	577	561	11%
First Professional						
Law (JD)	9	8	5	7	9	0%
Total UMKC Part-time Non-Resident 1st Professional	9	8	5	7	9	0%
Graduate						
Masters & Ed. Spec.	635	675	715	653	687	8%
Doctoral	230	256	289	301	286	24%
Nondegree	67	61	59	62	128	91%
Total UMKC Part-time Non-Resident Graduate	932	992	1,063	1,016	1,101	18%
Total UMKC Part-time Non-Resident Headcount	1,446	1,531	1,614	1,600	1,671	16%
UNIVERSITY OF MISSOURI-KANSAS CITY TOTAL NON-RESIDENT HEADCOUNT						
Undergraduate						
Freshman & Soph DS	751	789	847	858	949	26%
Junior & Senior DS	1,251	1,357	1,469	1,587	1,509	21%
Nondegree	135	155	170	161	185	37%
Total UMKC Non-Resident Undergraduate	2,137	2,301	2,486	2,606	2,643	24%
First Professional						
Dentistry (DDS)	123	115	107	112	117	-5%
Law (JD)	95	89	111	116	118	24%
Medicine (MD)	103	110	131	139	144	40%
Pharmacy (Dpharm)	20	19	25	28	31	55%
Total UMKC Non-Resident 1st Professional	341	333	374	395	410	20%
Graduate						
Masters & Ed. Spec.	1,215	1,231	1,235	1,209	1,263	4%
Doctoral	382	406	421	431	417	9%
Nondegree	69	67	61	68	134	94%
Total UMKC Non-Resident Graduate	1,666	1,704	1,717	1,708	1,814	9%
Grand Total UMKC Non-Resident Headcount	4,144	4,338	4,577	4,709	4,867	17%

Table 4.3a Resident Headcount History by Student Level, Load, and Campus, Fall 2008 to Fall 2012

Level	2008	2009	2010	2011	2012	5 yr. Change
MISSOURI S&T FULL-TIME RESIDENT HEADCOUNT						
Undergraduate						
Freshman & Soph DS	1,650	1,760	1,811	1,780	1,752	6%
Junior & Senior DS	2,012	2,114	2,178	2,313	2,401	19%
Nondegree	4	1	0	1	1	-75%
Total MO S&T Full-time Resident Undergraduate	3,666	3,875	3,989	4,094	4,154	13%
Graduate						
Masters & Ed. Spec.	118	158	207	199	153	30%
Doctoral	75	75	64	79	66	-12%
Nondegree	0	0	0	0	0	
Total MO S&T Full-time Resident Graduate	193	233	271	278	219	13%
Total Missouri S&T Full-time Resident Headcount	3,859	4,108	4,260	4,372	4,373	13%
MISSOURI S&T PART-TIME RESIDENT HEADCOUNT						
Undergraduate						
Freshman & Soph DS	57	70	65	68	68	19%
Junior & Senior DS	229	230	299	295	356	55%
Nondegree	22	38	34	47	51	132%
Total MO S&T Part-time Resident Undergraduate	308	338	398	410	475	54%
Graduate						
Masters & Ed. Spec.	261	222	232	256	238	-9%
Doctoral	43	38	47	43	40	-7%
Nondegree	15	12	8	5	6	-60%
Total MO S&T Part-time Resident Graduate	319	272	287	304	284	-11%
Total Missouri S&T Part-time Resident Headcount	627	610	685	714	759	21%
MISSOURI S&T TOTAL RESIDENT HEADCOUNT						
Undergraduate						
Freshman & Soph DS	1,707	1,830	1,876	1,848	1,820	7%
Junior & Senior DS	2,241	2,344	2,477	2,608	2,757	23%
Nondegree	26	39	34	48	52	100%
Total MO S&T Resident Undergraduate	3,974	4,213	4,387	4,504	4,629	16%
Graduate						
Masters & Ed. Spec.	379	380	439	455	391	3%
Doctoral	118	113	111	122	106	-10%
Nondegree	15	12	8	5	6	-60%
Total MO S&T Resident Graduate	512	505	558	582	503	-2%
Grand Total Missouri S&T Resident Headcount	4,486	4,718	4,945	5,086	5,132	14%

Table 4.3b Non-Resident Headcount History by Student Level, Load, and Campus, Fall 2008 to Fall 2012

Level	2008	2009	2010	2011	2012	5 yr. Change
MISSOURI S&T FULL-TIME NON-RESIDENT HEADCOUNT						
Undergraduate						
Freshman & Soph DS	459	463	465	458	506	10%
Junior & Senior DS	419	459	536	582	569	36%
Nondegree	4	10	5	9	31	675%
Total MO S&T Full-time Non-Resident Undergraduate	882	932	1,006	1,049	1,106	25%
Graduate						
Masters & Ed. Spec.	352	438	411	447	457	30%
Doctoral	212	281	320	361	362	71%
Nondegree	1	0	7	0	1	0%
Total MO S&T Full-time Non-Resident Graduate	565	719	738	808	820	45%
Total Missouri S&T Full-time Non-Resident Headcount	1,447	1,651	1,744	1,857	1,926	33%
MISSOURI S&T PART-TIME NON-RESIDENT HEADCOUNT						
Undergraduate						
Freshman & Soph DS	14	11	48	21	24	71%
Junior & Senior DS	35	38	55	87	76	117%
Nondegree	6	12	7	10	6	0%
Total MO S&T Part-time Non-Resident Undergraduate	55	61	110	118	106	93%
Graduate						
Masters & Ed. Spec.	339	350	366	408	409	21%
Doctoral	34	30	35	45	49	44%
Nondegree	6	4	5	7	23	283%
Total MO S&T Part-time Non-Resident Graduate	379	384	406	460	481	27%
Total Missouri S&T Part-time Non-Resident Headcount	434	445	516	578	587	35%
MISSOURI S&T TOTAL NON-RESIDENT HEADCOUNT						
Undergraduate						
Freshman & Soph DS	473	474	513	479	530	12%
Junior & Senior DS	454	497	591	669	645	42%
Nondegree	10	22	12	19	37	270%
Total MO S&T Non-Resident Undergraduate	937	993	1,116	1,167	1,212	29%
Graduate						
Masters & Ed. Spec.	691	788	777	855	866	25%
Doctoral	246	311	355	406	411	67%
Nondegree	7	4	12	7	24	243%
Total MO S&T Non-Resident Graduate	944	1,103	1,144	1,268	1,301	38%
Grand Total Missouri S&T Non-Resident Headcount	1,881	2,096	2,260	2,435	2,513	34%

Table 4.4a Resident Headcount History by Student Level, Load, and Campus, Fall 2008 to Fall 2012

Level	2008	2009	2010	2011	2012	5 yr. Change
UNIVERSITY OF MISSOURI-ST. LOUIS FULL-TIME RESIDENT HEADCOUNT						
Undergraduate						
Freshman & Soph DS	1,664	1,588	1,536	1,578	1,457	-12%
Junior & Senior DS	3,351	3,612	3,702	3,553	3,705	11%
Nondegree	107	117	139	147	148	38%
Total UMSL Full-time Resident Undergraduate	5,122	5,317	5,377	5,278	5,310	4%
First Professional						
Optometry (OD)	89	86	74	65	60	-33%
Total UMSL Full-time Resident 1st Professional	89	86	74	65	60	-33%
Graduate						
Masters & Ed. Spec.	429	470	479	454	389	-9%
Doctoral	59	59	120	131	125	112%
Nondegree	16	21	30	34	28	75%
Total UMSL Full-time Resident Graduate	504	550	629	619	542	8%
Total UMSL Full-time Resident Headcount	5,715	5,953	6,080	5,962	5,912	3%
UNIVERSITY OF MISSOURI-ST. LOUIS PART-TIME RESIDENT HEADCOUNT						
Undergraduate						
Freshman & Soph DS	499	462	429	411	347	-30%
Junior & Senior DS	2,358	2,422	2,568	2,626	2,560	9%
Nondegree	3,483	3,845	3,891	3,897	4,142	19%
Total UMSL Part-time Resident Undergraduate	6,340	6,729	6,888	6,934	7,049	11%
First Professional						
Optometry (OD)	0	0	0	0	0	-
Total UMSL Part-time Resident 1st Professional	0	0	0	0	0	-
Graduate						
Masters & Ed. Spec.	1,607	1,773	1,766	1,676	1,470	-9%
Doctoral	291	321	278	269	274	-6%
Nondegree	195	211	172	164	164	-16%
Total UMSL Part-time Resident Graduate	2,093	2,305	2,216	2,109	1,908	-9%
Total UMSL Part-time Resident Headcount	8,433	9,034	9,104	9,043	8,957	6%
UNIVERSITY OF MISSOURI-ST. LOUIS TOTAL RESIDENT HEADCOUNT						
Undergraduate						
Freshman & Soph DS	2,163	2,050	1,965	1,989	1,804	-17%
Junior & Senior DS	5,709	6,034	6,270	6,179	6,265	10%
Nondegree	3,590	3,962	4,030	4,044	4,290	19%
Total UMSL Resident Undergraduate	11,462	12,046	12,265	12,212	12,359	8%
First Professional						
Optometry (OD)	89	86	74	65	60	-33%
Total UMSL Resident 1st Professional	89	86	74	65	60	-33%
Graduate						
Masters & Ed. Spec.	2,036	2,243	2,245	2,130	1,859	-9%
Doctoral	350	380	398	400	399	14%
Nondegree	211	232	202	198	192	-9%
Total UMSL Resident Graduate	2,597	2,855	2,845	2,728	2,450	-6%
Grand Total UMSL Resident Headcount	14,148	14,987	15,184	15,005	14,869	5%

Table 4.4b Non-Resident Headcount History by Student Level, Load, and Campus, Fall 2008 to Fall 2012

Level	2008	2009	2010	2011	2012	5 yr. Change
UNIVERSITY OF MISSOURI-ST. LOUIS FULL-TIME NON-RESIDENT HEADCOUNT						
Undergraduate						
Freshman & Soph DS	267	286	274	306	335	25%
Junior & Senior DS	353	383	396	391	388	10%
Nondegree	57	42	40	39	36	-37%
Total UMSL Full-time Non-Resident Undergraduate	677	711	710	736	759	12%
First Professional						
Optometry (OD)	89	93	97	107	108	21%
Total UMSL Full-time Non-Resident 1st Professional	89	93	97	107	108	21%
Graduate						
Masters & Ed. Spec.	164	167	165	143	170	4%
Doctoral	73	68	146	137	117	60%
Nondegree	9	8	12	6	5	-44%
Total UMSL Full-time Non-Resident Graduate	246	243	323	286	292	19%
Total UMSL Full-time Non-Resident Headcount	1,012	1,047	1,130	1,129	1,159	15%
UNIVERSITY OF MISSOURI-ST. LOUIS PART-TIME NON-RESIDENT HEADCOUNT						
Undergraduate						
Freshman & Soph DS	28	19	26	27	30	7%
Junior & Senior DS	158	157	141	139	159	1%
Nondegree	33	33	29	37	28	-15%
Total UMSL Part-time Non-Resident Undergraduate	219	209	196	203	217	-1%
First Professional						
Optometry (OD)	0	0	0	0	0	-
Total UMSL Part-time Non-Resident 1st Professional	0	0	0	0	0	-
Graduate						
Masters & Ed. Spec.	215	171	207	399	387	80%
Doctoral	96	105	29	34	41	-57%
Nondegree	51	15	45	39	32	-37%
Total UMSL Part-time Non-Resident Graduate	362	291	281	472	460	27%
Total UMSL Part-time Non-Resident Headcount	581	500	477	675	677	17%
UNIVERSITY OF MISSOURI-ST. LOUIS TOTAL NON-RESIDENT HEADCOUNT						
Undergraduate						
Freshman & Soph DS	295	305	300	333	365	24%
Junior & Senior DS	511	540	537	530	547	7%
Nondegree	90	75	69	76	64	-29%
Total UMSL Non-Resident Undergraduate	896	920	906	939	976	9%
First Professional						
Optometry (OD)	89	93	97	107	108	21%
Total UMSL Non-Resident 1st Professional	89	93	97	107	108	21%
Graduate						
Masters & Ed. Spec.	379	338	372	542	557	47%
Doctoral	169	173	175	171	158	-7%
Nondegree	60	23	57	45	37	-38%
Total UMSL Non-Resident Graduate	608	534	604	758	752	24%
Grand Total UMSL Non-Resident Headcount	1,593	1,547	1,607	1,804	1,836	15%

Table 5. Headcount Students by Gender and Ethnicity, Fall 2012

Data - Classification	<u>MU</u>		<u>UMKC</u>		<u>MO S&T</u>		<u>UMSL</u>		<u>TOTAL</u>	
	HC	%	HC	%	HC	%	HC	%	HC	%
A. Gender										
Men										
First-time DS Freshmen	3,062	47%	454	40%	888	79%	226	41%	4,630	50%
Other Undergraduate	9,947	49%	3,963	42%	3,594	76%	5,372	42%	22,876	48%
First Professional	556	44%	870	50%	0	-	64	38%	1,490	47%
Graduate	<u>2,731</u>	42%	<u>1,506</u>	41%	<u>1,432</u>	79%	<u>1,087</u>	34%	<u>6,756</u>	45%
Total	16,296	47%	6,793	42%	5,914	77%	6,749	40%	35,752	48%
Women										
First-time DS Freshmen	3,439	53%	671	60%	236	21%	320	59%	4,666	50%
Other Undergraduate	10,512	51%	5,526	58%	1,123	24%	7,417	58%	24,578	52%
First Professional	715	56%	855	50%	0	-	104	62%	1,674	53%
Graduate	<u>3,742</u>	58%	<u>2,145</u>	59%	<u>372</u>	21%	<u>2,115</u>	66%	<u>8,374</u>	55%
Total	18,408	53%	9,197	58%	1,731	23%	9,956	60%	39,292	52%
Grand Total	34,704		15,990		7,645		16,705		75,044	

Table 5. Headcount Students by Gender and Ethnicity (continued)

Data - Classification	MU		UMKC		MO S&T		UMSL		TOTAL	
	HC	%	HC	%	HC	%	HC	%	HC	%
B. Ethnicity *										
Am Indian/Alaskan Native										
First-time DS Freshmen	14	0%	2	0%	1	0%	5	1%	22	0%
Other Undergraduate	70	0%	44	0%	25	1%	26	0%	165	0%
First Professional	15	1%	8	0%	0	-	0	0%	23	1%
Graduate	<u>19</u>	0%	<u>7</u>	0%	<u>9</u>	1%	<u>12</u>	0%	<u>47</u>	0%
Total	118	0%	61	0%	35	0%	43	0%	257	0%
Asian										
First-time DS Freshmen	131	2%	94	9%	29	3%	64	12%	318	3%
Other Undergraduate	490	2%	477	5%	89	2%	501	4%	1,557	3%
First Professional	54	5%	277	17%	0	-	16	10%	347	12%
Graduate	<u>105</u>	2%	<u>82</u>	2%	<u>44</u>	3%	<u>74</u>	3%	<u>305</u>	2%
Total	780	2%	930	6%	162	2%	655	4%	2,527	4%
Pacific Islander										
First-time DS Freshmen	5	0%	1	0%	0	0%	3	1%	9	0%
Other Undergraduate	8	0%	19	0%	11	0%	6	0%	44	0%
First Professional	0	0%	2	0%	0	-	0	0%	2	0%
Graduate	<u>0</u>	0%	<u>2</u>	0%	<u>3</u>	0%	<u>1</u>	0%	<u>6</u>	0%
Total	13	0%	24	0%	14	0%	10	0%	61	0%
African-American Non-Hispanic										
First-time DS Freshmen	657	10%	237	22%	37	3%	94	18%	1,025	11%
Other Undergraduate	1,513	8%	1,269	14%	217	5%	1,934	16%	4,933	11%
First Professional	46	4%	70	4%	0	-	3	2%	119	4%
Graduate	<u>246</u>	4%	<u>268</u>	8%	<u>63</u>	4%	<u>449</u>	15%	<u>1,026</u>	7%
Total	2,462	7%	1,844	12%	317	4%	2,480	16%	7,103	10%
Hispanic										
First-time DS Freshmen	232	4%	77	7%	28	3%	15	3%	352	4%
Other Undergraduate	591	3%	537	6%	109	2%	273	2%	1,510	3%
First Professional	32	3%	52	3%	0	-	3	2%	87	3%
Graduate	<u>130</u>	2%	<u>110</u>	3%	<u>49</u>	3%	<u>80</u>	3%	<u>369</u>	3%
Total	985	3%	776	5%	186	3%	371	2%	2,318	3%
White Non-Hispanic										
First-time DS Freshmen	5,084	79%	566	52%	937	87%	297	56%	6,884	75%
Other Undergraduate	16,468	82%	5,953	67%	3,714	82%	8,840	73%	34,975	77%
First Professional	1,026	87%	1,178	73%	0	-	128	84%	2,332	79%
Graduate	<u>4,334</u>	69%	<u>2,325</u>	69%	<u>822</u>	48%	<u>2,106</u>	71%	<u>9,587</u>	67%
Total	26,912	79%	10,022	67%	5,473	75%	11,371	73%	53,778	75%
Nonresident Alien										
First-time DS Freshmen	135	2%	43	4%	10	1%	31	6%	219	2%
Other Undergraduate	663	3%	368	4%	309	7%	327	3%	1,667	4%
First Professional	2	0%	8	0%	0	-	2	1%	12	0%
Graduate	<u>1,335</u>	21%	<u>527</u>	16%	<u>725</u>	42%	<u>210</u>	7%	<u>2,797</u>	20%
Total	2,135	6%	946	6%	1,044	14%	570	4%	4,695	7%
Two or More Race										
First-time DS Freshmen	210	3%	65	6%	38	4%	18	3%	331	4%
Other Undergraduate	344	2%	209	2%	49	1%	124	1%	726	2%
First Professional	11	1%	18	1%	0	-	1	1%	30	1%
Graduate	<u>95</u>	2%	<u>27</u>	1%	<u>3</u>	0%	<u>24</u>	1%	<u>149</u>	1%
Total	660	2%	319	2%	90	1%	167	1%	1,236	2%
Grand Total	34,065		14,922		7,321		15,667		71,975	

* Note: Students not reporting ethnicity (Unknown) were removed from the distribution.

Unknown

First-time DS Freshmen	33	40	44	19	136
Other Undergraduate	312	613	194	758	1,877
First Professional	85	112	0	15	212
Graduate	<u>209</u>	<u>303</u>	<u>86</u>	<u>246</u>	<u>844</u>
Total	639	1,068	324	1,038	3,069

Source: EMSAS Fall Enrollment file

IR&P/LCB 10/31/12