

- CEILING GENERAL NOTES**
1. CEILING GENERAL NOTES APPLY TO ALL ARCHITECTURAL SHEETS AND DETAILS.
 2. CEILING HEIGHTS INDICATED ON RCPs.
 3. CONCRETE CEILINGS TO BE LEFT EXPOSED WHERE HATCH IS NOT INDICATED ON RCPs.
 4. LIGHTING SHOWN ON RCPs FOR REFERENCE ONLY. REFER TO ELECTRICAL DRAWINGS FOR FIXTURE TYPES AND MOUNTING HEIGHTS.
 5. DIFFUSERS SHOWN ON RCPs FOR REFERENCE ONLY. REFER TO MECHANICAL DRAWINGS FOR DIFFUSER AND GRILL TYPES.
 6. CEILING MOUNTED DEVICES SHOWN IN RCPs FOR REFERENCE AND LOCATIONS. REFER TO ELECTRICAL AND AV DRAWINGS FOR TYPES AND REQUIREMENTS.
 7. COORDINATE FRAMING OF STRUCTURED RESTROOM CEILINGS WITH LIGHT TYPES AND LOCATIONS.
 8. ALL GYPSUM BOARD CEILINGS, SOFFITS AND HEADERS TO BE PAINTED (PA-1).
 9. ALL DIMENSIONS ON RCPs ARE CLEAR DIMENSIONS UNLESS NOTED OTHERWISE.
 10. PROVIDE SEISMIC BRACING OF ALL CEILING SYSTEMS.

- REFLECTED CEILING PLAN FINISH LEGEND**
- AC Thermal Insulation: 02100-Thermal Insulation
 - AC-1 3/4" Sprayed Cellulose Acoustical Insulation
 - AP Acoustical Panel Ceilings: 05113-Acoustical Panel Ceilings
 - AP-1 2'x4' Caisable Acoustical Ceiling Tile (Acoustic)
 - AP-2 2'x2' Acoustical Ceiling Tile (Office)
 - AP-3 4'x8' and 4'x6' Acoustical Ceiling Panel (Level 2)
 - AP-4 2'x4' Acoustical Ceiling Tile (Conference Rooms and PBLs)
 - AP-5 6'x4' Acoustical Ceiling Tile (Conference Rooms and PBLs)
 - AP-6 4'x8' Textum Cloud Panel
 - RS Polyc Window Shades 122413
Moveable Polyc Shades, Ref: RCPs for locations and details
 - ME Metal Edge Molding and Trim: 05113
2" Metal Edge Trim, Ref: RCPs for locations and details

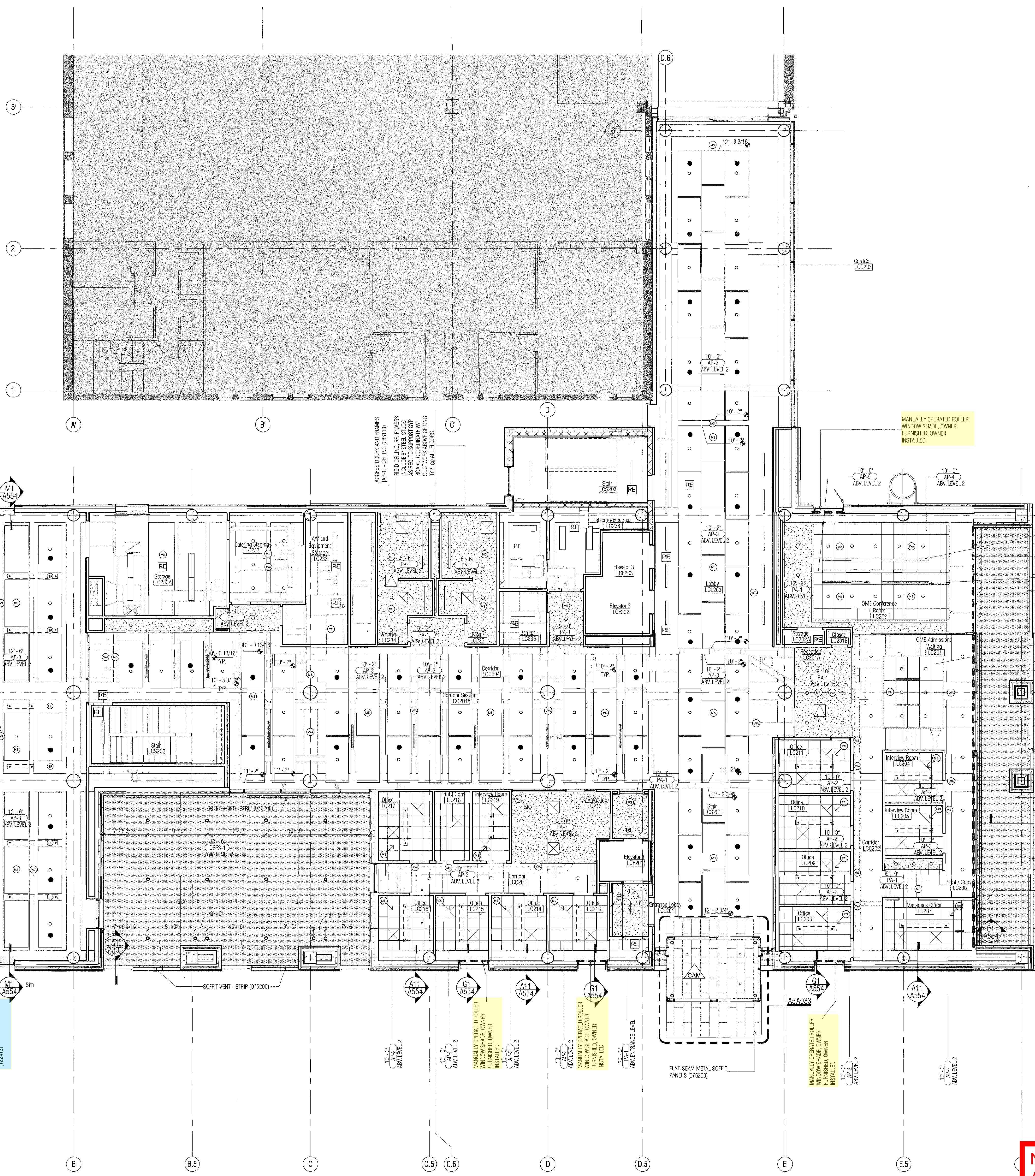
- RCP KEY**
- PIPE/CABLE TRAY TRAPEZOID ZONE (DIAGONAL HATCH) W/ CAST-IN-PLACE UNISTRUT (BLACK)
 - SP SPEAKERS, RE: AV
 - MS MOTION SENSOR, RE: ELEC
 - WA WHI HUB, RE: ELEC
 - CAM SECURITY CAMERA
 - PAINTED GYP BOARD CEILING
 - PAINTED GYP BOARD CEILING W/ ISOLATION HANGERS, RE: AB/AS33
 - VERT. GYP. BOARD HEADER

NOTE:
 THIS DRAWING SET IS ISSUED FOR THE SOLE PURPOSE OF PROCURING WINDOW TREATMENTS.
 NOTES ON THESE DRAWINGS NOT DIRECTLY RELATED TO WINDOW TREATMENTS SHALL BE DISREGARDED.
 INFORMATION PERTAINING TO THE PURCHASE OF WINDOW TREATMENTS IS IDENTIFIED BY YELLOW OR BLUE HIGHLIGHT, OR INSIDE RED BOXES.

A1 Reflected Ceiling Plan-Level 1
 1/8" = 1'-0" RE: A1/A030



PCCLC- School of Medicine Expansion



- REFLECTED CEILING PLAN FINISH LEGEND**
- AC Thermal Insulation, 02100-Thermal Insulation
 - [AC-1] 3/4" Sprayed Cellulose Acoustical Insulation
 - AP Acoustical Panel Ceilings, 085113-Acoustical Panel Ceilings
 - [AP-1] 2x4" Cleanable Acoustical Ceiling Tile (Anatomy)
 - [AP-2] 2x2" Acoustical Ceiling Tile (Office)
 - [AP-3] 4x8 and 4x6" Acoustical Ceiling Panel (Level 2)
 - [AP-4] 2x4" Acoustical Ceiling Tile (Conference Rooms and PBL)
 - [AP-5] 6x4" Acoustical Ceiling Tile (Conference Rooms and PBL)
 - [AP-6] 4x8" Tectum Cloud Panel
 - Roller Window Shades 122413
 - Motorized Roller Shades, Re: RCP's for locations and details
 - Metal Edge Mouldings and Trim, 085113
 - 2" Metal Edge Trim, Re: RCP's for locations and details
- RCP KEY**
- PIPE/CABLE TRAY TRAPEZOID (DIAGONAL HATCH) W/ CAST-IN-PLACE UNISTRUT (BLACK)
 - SP SPEAKERS, RE: AV
 - MS MOTION SENSOR, RE: ELEC.
 - WA WIFI-HUB, RE: ELEC.
 - CAM SECURITY CAMERA
 - PAINTED GYP BOARD CEILING
 - PAINTED GYP BOARD CEILING W/ ISOLATION HANGERS, RE: AS/ASS3
 - VENT. GYP. BOARD HEADER

PCCLC - School of Medicine Expansion

NOTE:
ALL SHADES ARE MANUALLY OPERATED ROLLER SHADES UNLESS NOTED OTHERWISE

A1 Reflected Ceiling Plan-Level 2
1/8" = 1'-0" RE: A1/A033

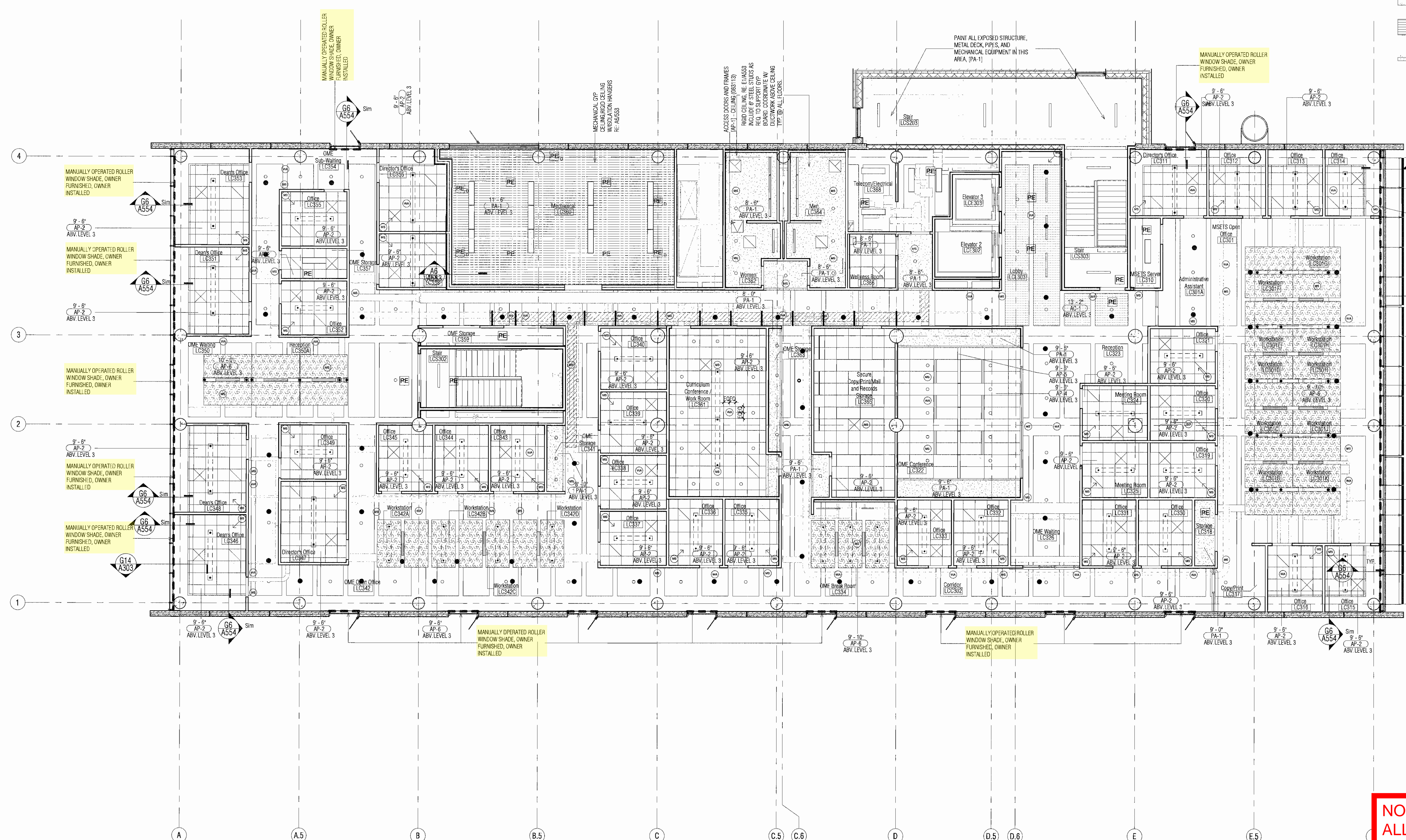
REFLECTED CEILING PLAN FINISH LEGEND

- AC Thermal Insulation, 072100-Thermal Insulation
- (AC-1) 3/4" Sprayed Cellulose Acoustical Insulation
- AP Acoustical Panel Ceilings, 095113-Acoustical Panel Ceilings
- (AP-1) 2x4 Cleanable Acoustical Ceiling Tile (Acoustic)
- (AP-2) 2x2 Acoustical Ceiling Tile (Office)
- (AP-3) 4x8 and 4x6 Acoustical Ceiling Panel (Level 2)
- (AP-4) 2x4 Acoustical Ceiling Tile (Conference Rooms and PBLs)
- (AP-5) 6x4 Acoustical Ceiling Tile (Conference Rooms and PBLs)
- (AP-6) 4x8 Tectum Cloud Panel

- Boiler Window Shades 122413
- Motorized Roller Shades, Re: RCPs for locations and details
- Metal Edge Molding and Trim, 095113
- 2" Metal Edge Trim, Re: RCPs for locations and details

RCP KEY

- PIPE/CABLE TRAY TRAPEZOID ZONE (DIAGONAL HATCH) W/ CAST-IN-PLACE UNSTRUT (BLADE)
- SPEAKERS, RE: AV
- MOTION SENSOR, RE: ELEC.
- WIFI HUB, RE: ELEC.
- SECURITY CAMERA
- PAINTED GYP BOARD CEILING
- PAINTED GYP BOARD CEILING W/ ISOLATION HANGERS, RE: AG/A533
- VERT: GYP BOARD HEADER



PCCLC- School of Medicine Expansion

NOTE:
ALL SHADES ARE MANUALLY OPERATED ROLLER SHADES UNLESS NOTED OTHERWISE

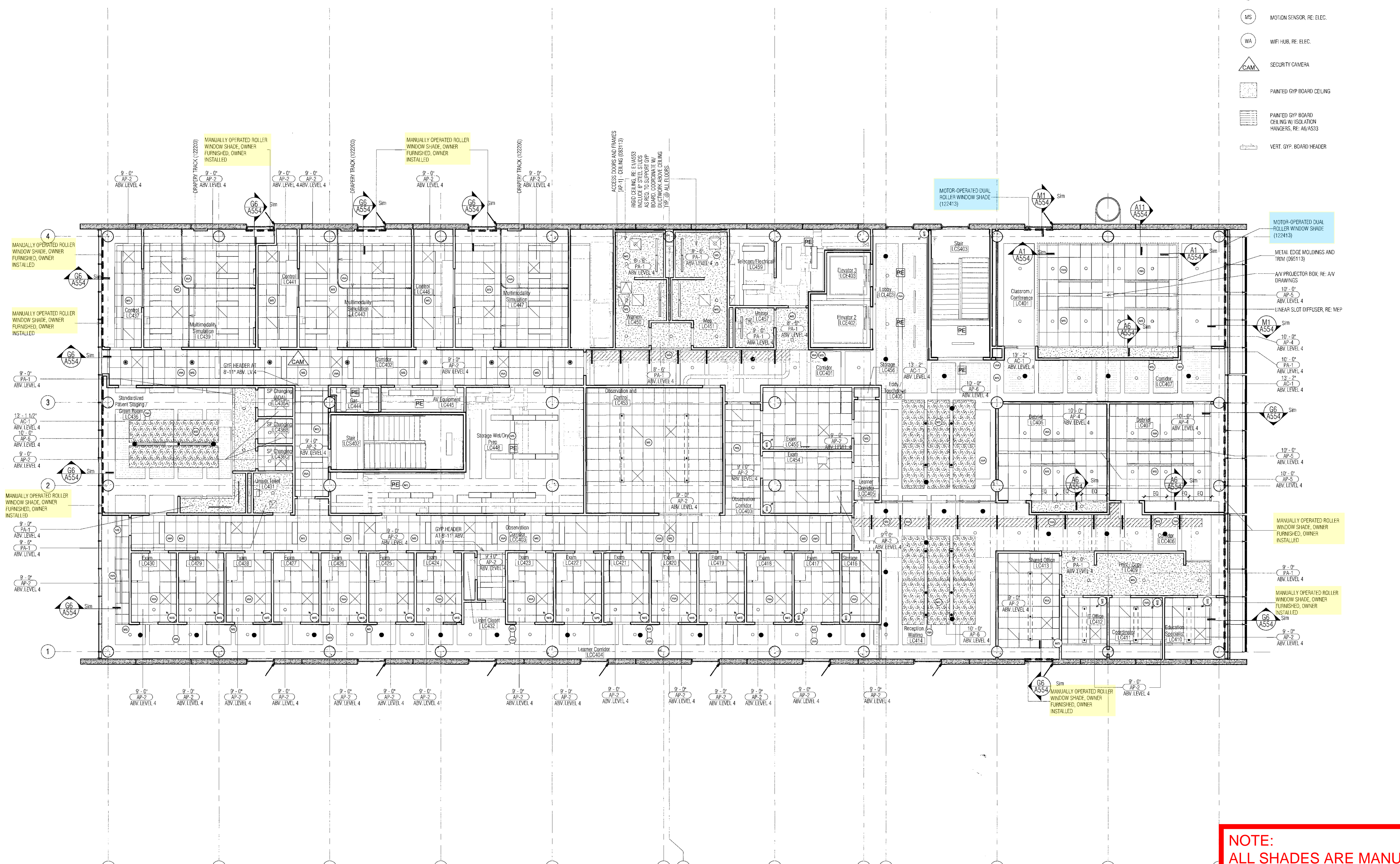
A1 Reflected Ceiling Plan-Level 3
1/8" = 1'-0" RE: P1/A051

REFLECTED CEILING PLAN FINISH LEGEND

- AC Thermal Insulation: 072100-Thermal Insulation
- AC-11 3/4" Sprayed Cellulose Acoustical Insulation
- AP Acoustical Panel Ceilings: 095113-Acoustical Panel Ceilings
- AP-1 2x4 Cleanable Acoustical Ceiling Tile (Anatomy)
- AP-2 2x2 Acoustical Ceiling Tile (Offices)
- AP-3 4x8 and 4x6 Acoustical Ceiling Panel (Level 2)
- AP-4 2x4 Acoustical Ceiling Tile (Conference Rooms and PBLs)
- AP-5 6'x4 Acoustical Ceiling Tile (Conference Rooms and PBLs)
- AP-6 4x8 Tectum Cloud Panel
- Roller Window Shades: 122413
- Motorized Roller Shades, Re: RCPs for locations and details
- Metal Edge Molding and Trim: 096113
- 2" Metal Edge Trim, Re: RCPs for locations and details

RCP KEY

- PFP/CABLE TRAY TRAPEZOIDAL (DIAGONAL HATCH) W/ CAST IN-PLACE UNISTRUT (BLACK)
- SP SPEAKERS, RE: AV
- MS MOTION SENSOR, RE: ELEC.
- WH WHI HUB, RE: ELEC.
- CAM SECURITY CAMERA
- PAINTED GYP BOARD CEILING
- PAINTED GYP BOARD CEILING W/ ISOLATION HANGERS, RE: AB-AS33
- VERT. GYP. BOARD HEADER



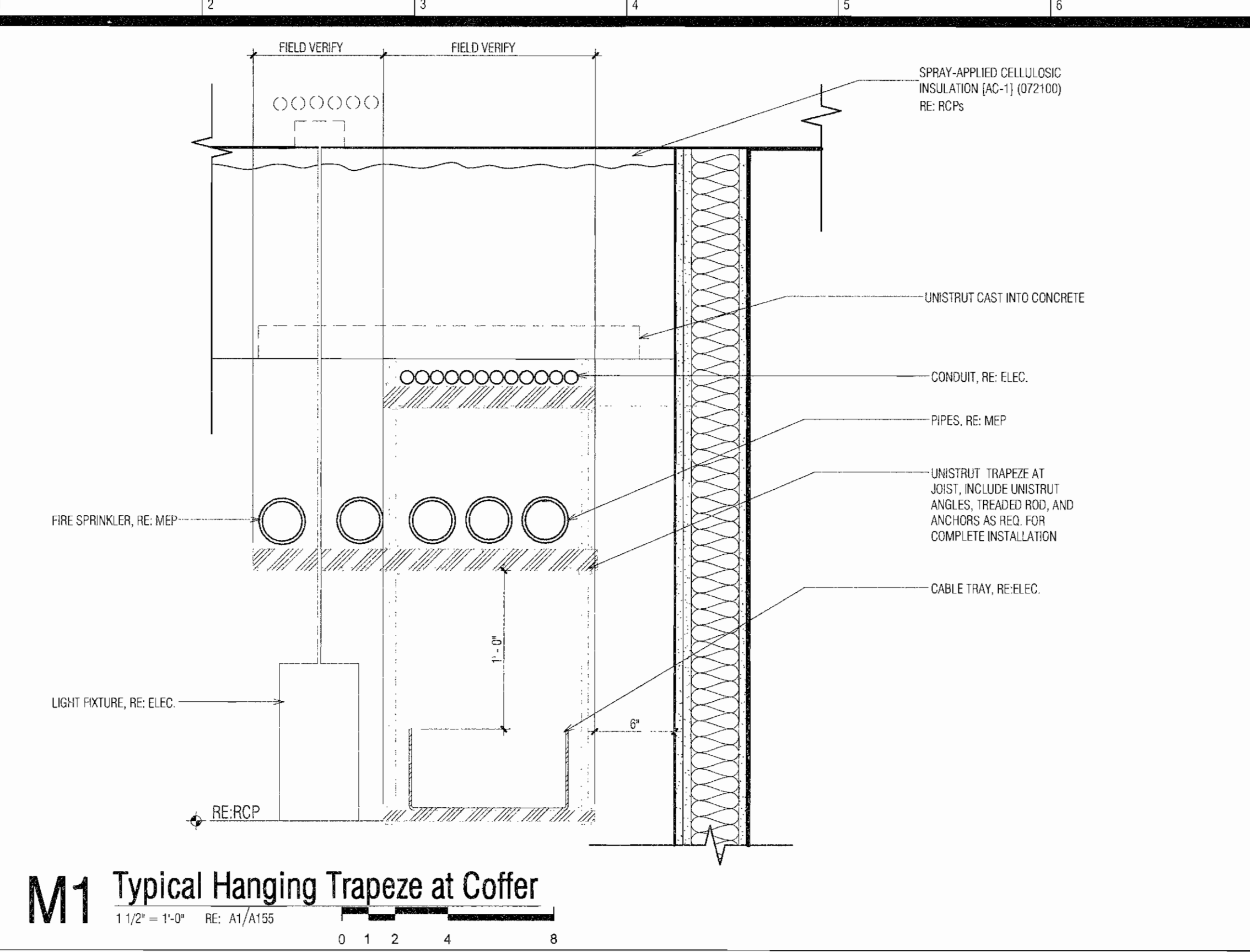
NOTE:
ALL SHADES ARE MANUALLY OPERATED ROLLER SHADES UNLESS NOTED OTHERWISE

A1 Reflected Ceiling Plan-Level 4
1/8" = 1'-0" RE: 31/0030

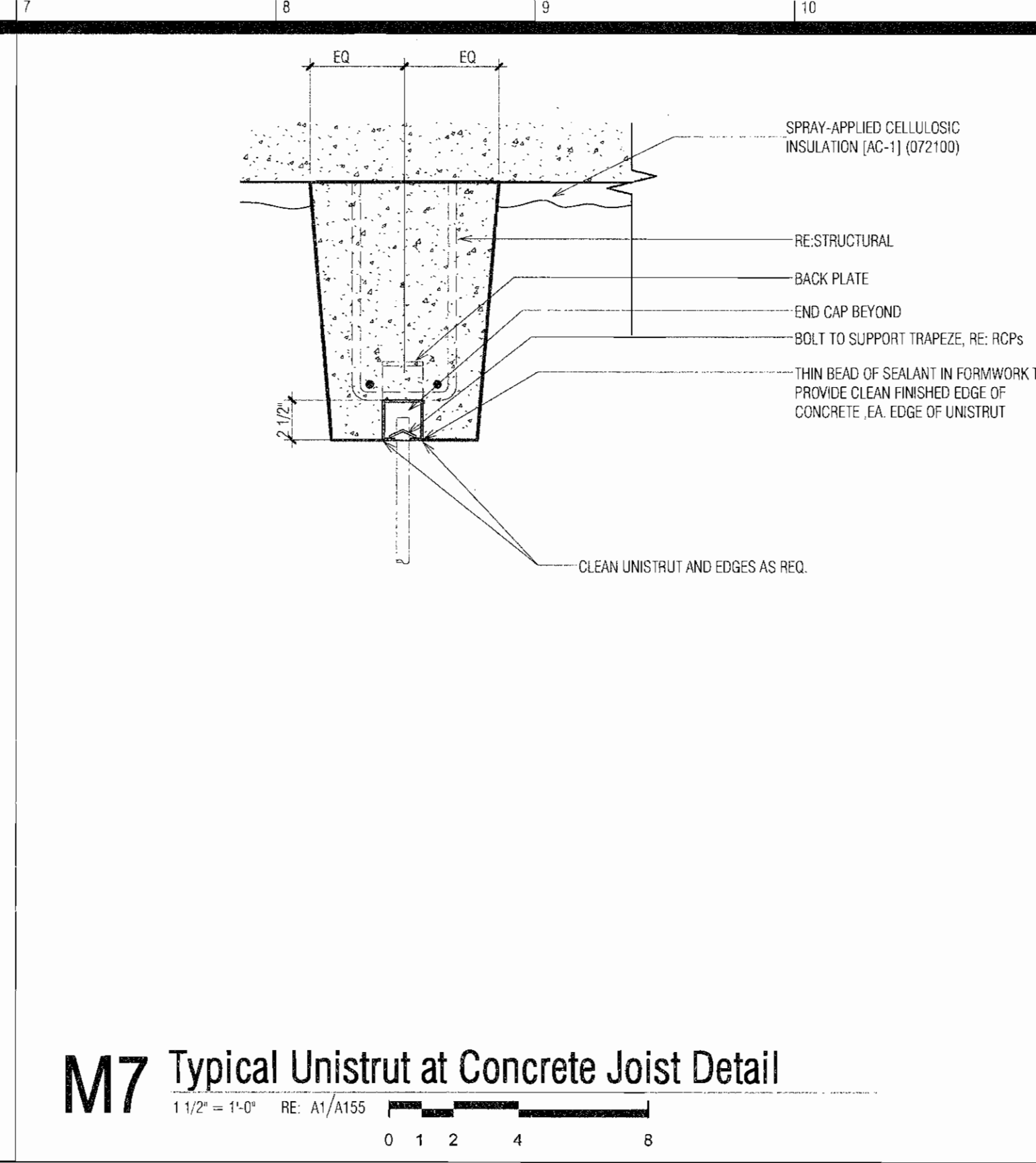
PCCLC- School of Medicine Expansion

REFLECTED CEILING PLAN-LEVEL 4

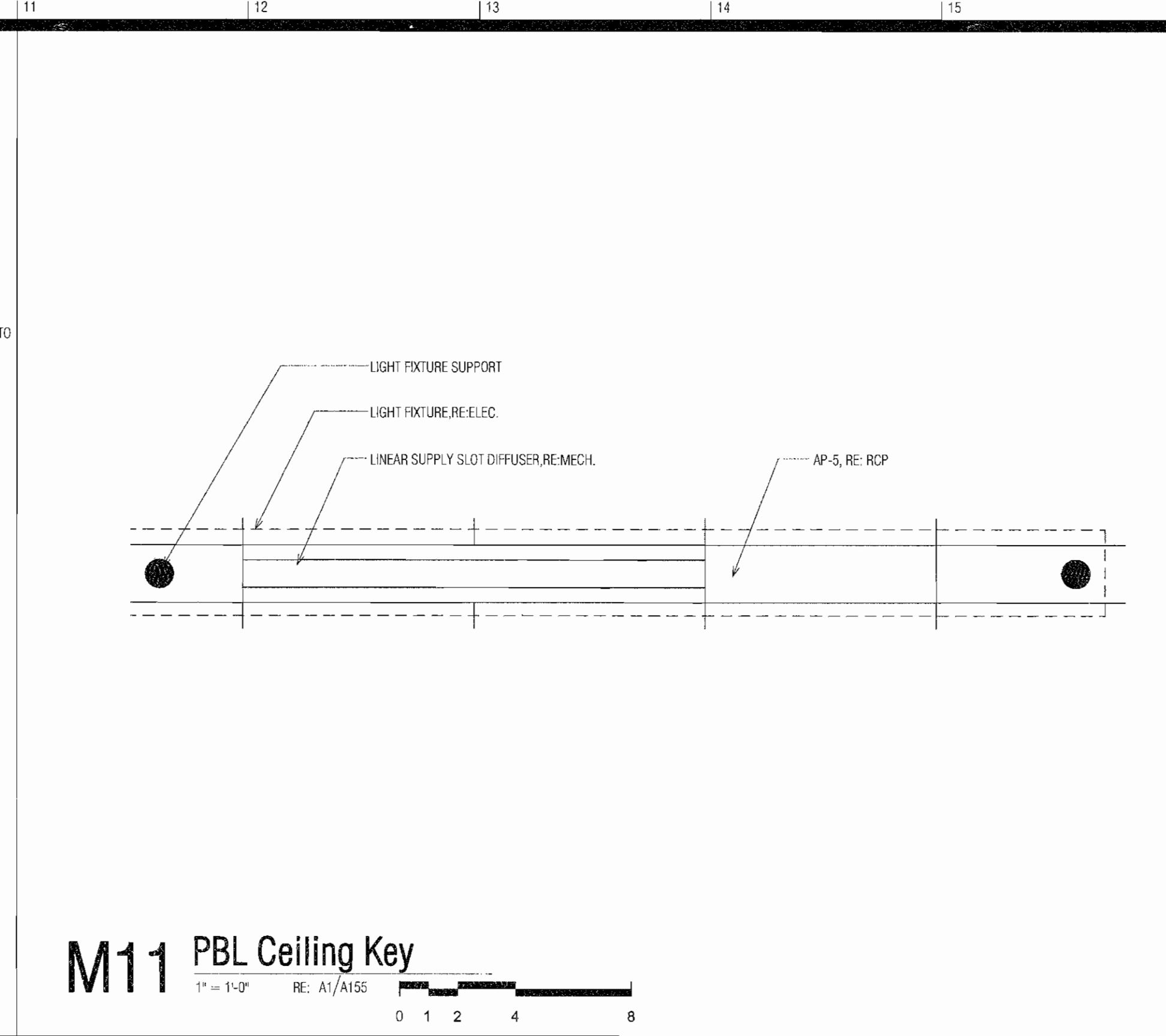
A154



M1 Typical Hanging Trapeze at Coffer
 1/2" = 1'-0" RE: A1/A155
 0 1 2 4 8

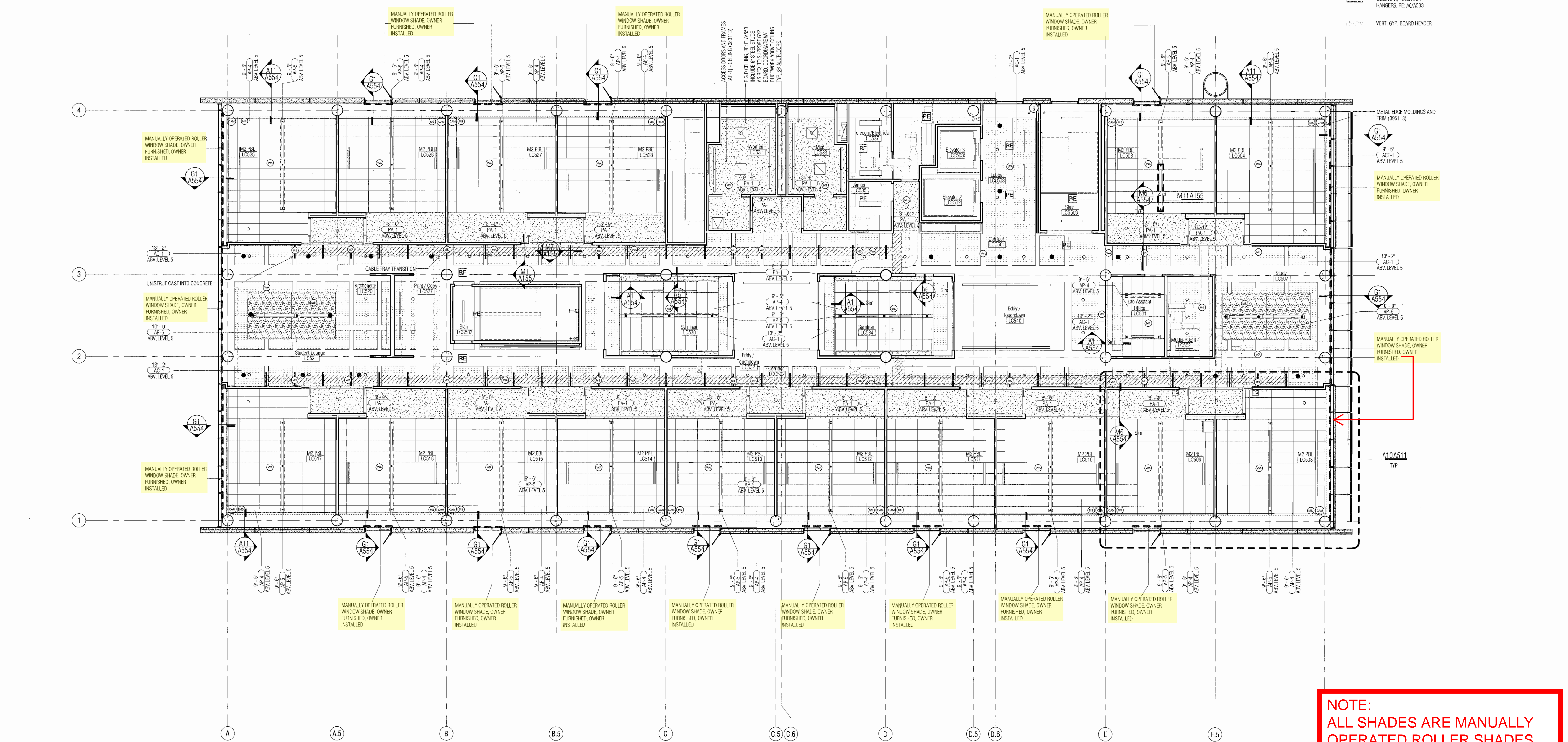


M7 Typical Unistrut at Concrete Joist Detail
 1/2" = 1'-0" RE: A1/A155
 0 1 2 4 8



M11 PBL Ceiling Key
 1" = 1'-0" RE: A1/A155
 0 1 2 4 8

- REFLECTED CEILING PLAN FINISH LEGEND**
- AC Thermal Insulation: G12100: Thermal Insulation (AC-1) 3/4" Spray-on Cellosic Acoustical Insulation
 - AP Acoustical Panel Ceilings: 050113: Acoustical Panel Ceilings (AP-1) 2'x4' Cleanable Acoustical Ceiling Tile (Anatomy)
 - (AP-2) 2'x2' Acoustical Ceiling Tile (Offices)
 - (AP-3) 4'x8' and 4'x6' Acoustical Ceiling Panel (Level 2)
 - (AP-4) 2'x4' Acoustical Ceiling Tile (Conference Rooms and PBLs)
 - (AP-5) 6'x6' Acoustical Ceiling Tile (Conference Rooms and PBLs)
 - (AP-6) 4'x8' Tectum Cloud Panel
 - Relief: Window Shades: 022413 Motorized Roller Shades, RE: RCPs for locations and details
 - Metal Edge Moldings and Trim: 050113 2" Metal Edge Trim, RE: RCPs for locations and details
- RCP KEY**
- PIPE/CABLE TRAY TRAPEZE ZONE (DIAGONAL HATCH) W/ CAST-IN-PLACE UNISTRUT (BLACK)
 - SP SPEAKERS, RE: AV
 - MS MOTION SENSOR, RE: ELEC.
 - WA WIFI HUB, RE: ELEC.
 - CAM SECURITY CAMERA
 - PAINTED GYP BOARD CEILING
 - PAINTED GYP BOARD CEILING W/ ISOLATION HANDICAPS, RE: AG4533
 - VERTI GYP BOARD HEADR



A1 Reflected Ceiling Plan-Level 5
 1/8" = 1'-0" RE: J1/AG50

NOTE:
 ALL SHADES ARE MANUALLY OPERATED ROLLER SHADES UNLESS NOTED OTHERWISE

PCCLC- School of Medicine Expansion

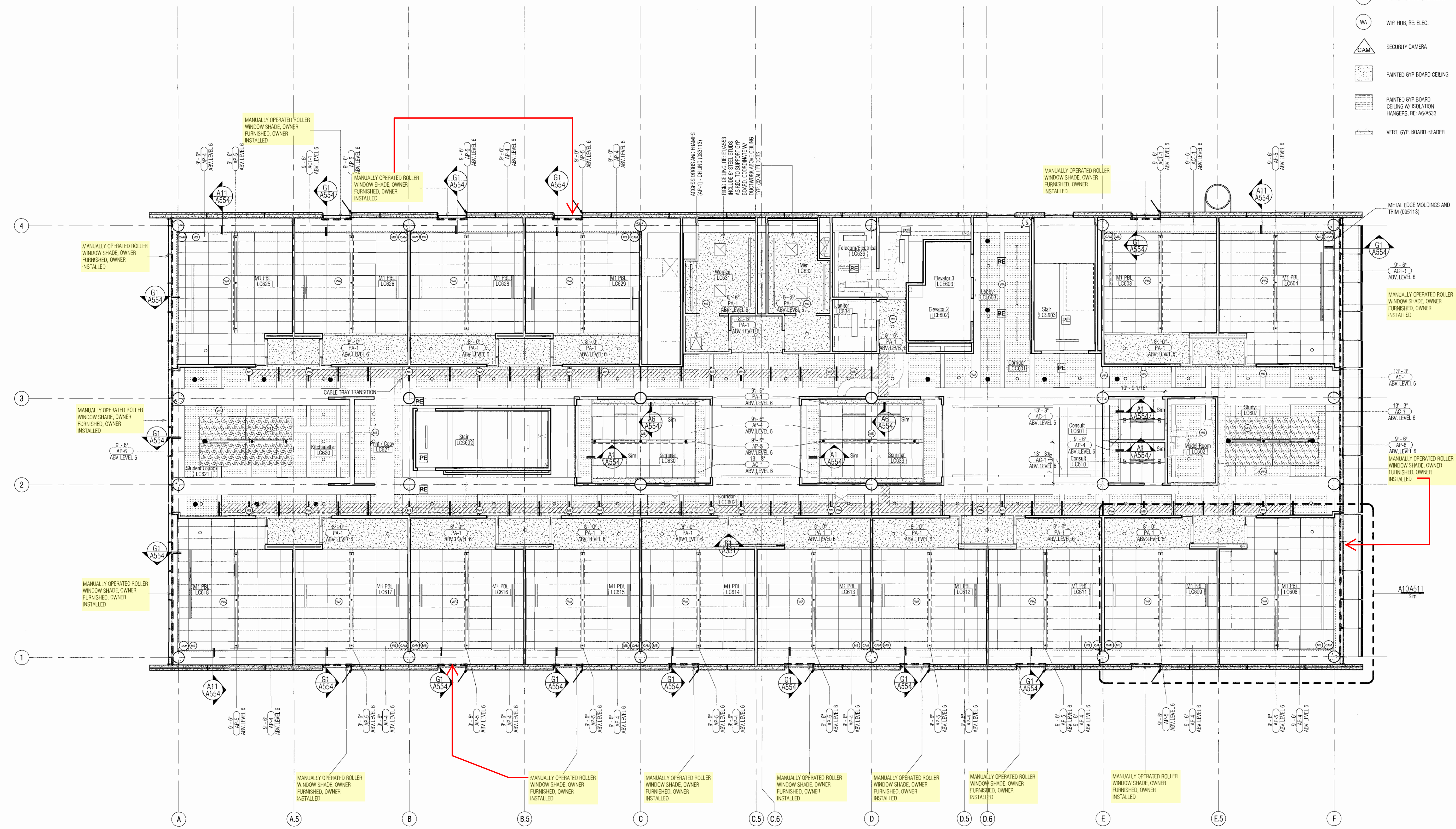
REFLECTED CEILING PLAN-LEVEL 5
A155

REFLECTED CEILING PLAN FINISH LEGEND

- AC Thermal Insulation; 072100-Thermal Insulation
(AC-1) 3/4" Sprayed Cellulose Acoustical Insulation
- AP Acoustical Panel Ceilings; 095113-Acoustical Panel Ceilings
(AP-1) 2x4 Clearable Acoustical Ceiling Tile (Priority)
- (AP-2) 2x2 Acoustical Ceiling Tile (Offices)
- (AP-3) 4x8 and 4x6 Acoustical Ceiling Panel (Level 2)
- (AP-4) 2x4 Acoustical Ceiling Tile (Conference Rooms and PBLs)
- (AP-5) 6x4 Acoustical Ceiling Tile (Conference Rooms and PBLs)
- (AP-6) 4x8 Tectum Cloud Panel
- Roller Window Shades; 122413
Motorized Roller Shades, Per: RCP's for locations and details
- Metal Edge Moldings and Trim; 095113
2" Metal Edge Trim, Per: RCP's for locations and details

RCP KEY

- PIPE/CABLE TRAY TRAFFIC ZONE (DIAGONAL HATCH) W/ CAST-IN-PLACE UNISTRUT (BLACK)
- SP SPEAKERS, RE: AV
- MS MOTION SENSOR, RE: ELEC.
- WA WIRE HUB, RE: ELEC.
- SECURITY CAMERA
- PAINTED GYP BOARD CEILING
- PAINTED GYP BOARD CEILING W/ ISOLATION HANGERS, RE: A24333
- VERT. GYP. BOARD HEADER



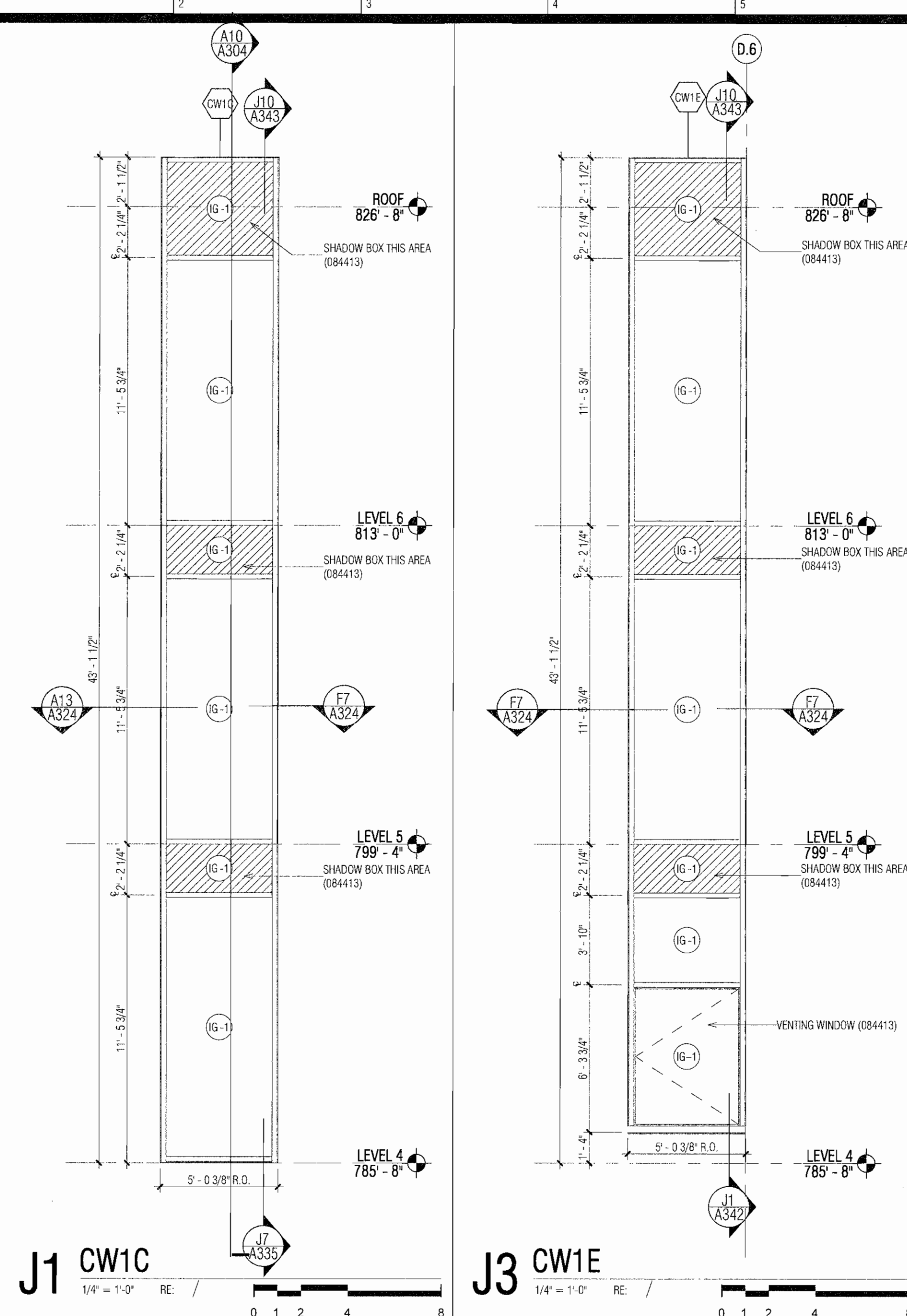
PCCLC- School of Medicine Expansion

NOTE:
ALL SHADES ARE MANUALLY OPERATED ROLLER SHADES UNLESS NOTED OTHERWISE

A1 Reflected Ceiling Plan- Level 6
1/8" = 1'-0" RE: JY/A030

REFLECTED CEILING PLAN-LEVEL 6

A156



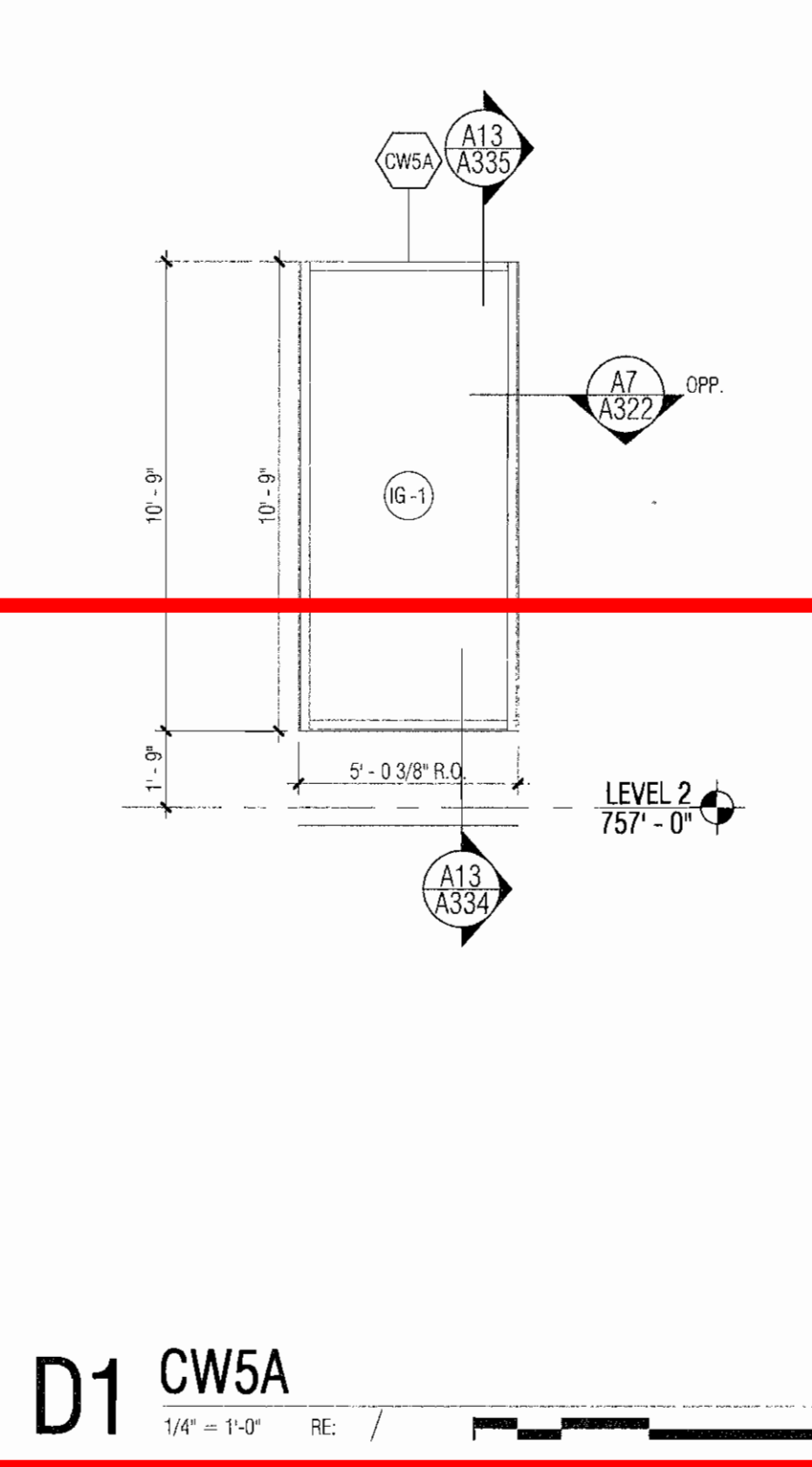
J1 CW1C
1/4" = 1'-0" RE / 0 1 2 4 8

J3 CW1E
1/4" = 1'-0" RE / 0 1 2 4 8

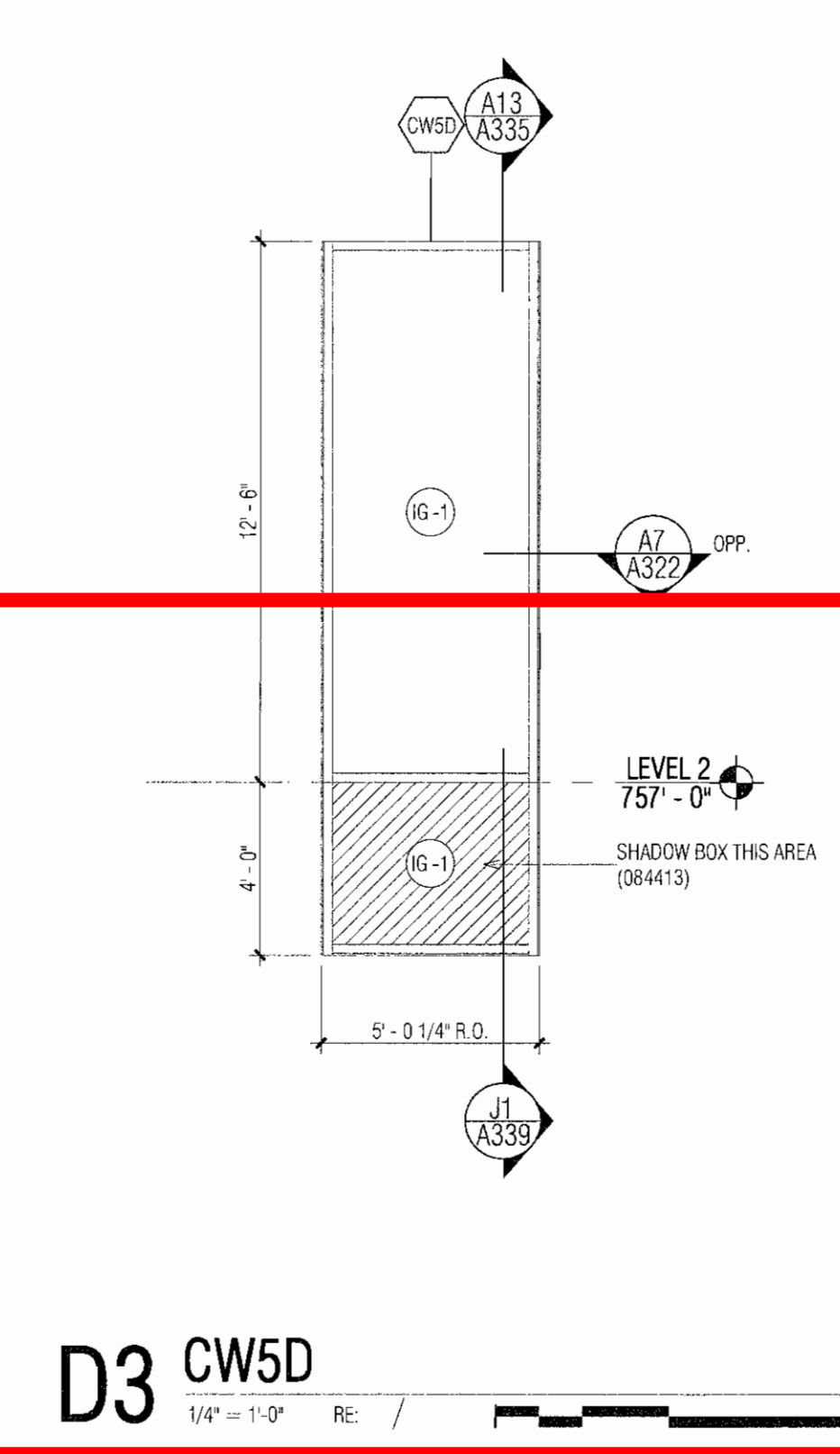
CURTAIN WALL SCHEDULE				
NO.	MARK	FRAMING SYSTEM TYPE	ELEVATION	SPECIFICATION SECTION
CW1	A	Type-1	F13/A031	084413.A00
CW1	B	Type-1	F13/A032	084413.A00
CW1	C	Type-1	J1/A030	084413.A00
CW1	D	Type-1	H16/A031	084413.A00
CW1	E	Type-1	J3/A030	084413.A00
CW2	A	Type-2	E1/A033	084413.A12
CW3	A	Type-3	F1/A031	084413.A14
CW3	B	Type-3	F1/A031	084413.A14
CW3	C	Type-3	A1/A030	084413.A14
CW3	D	Type-3	A13/A032	084413.A14
CW3	E	Type-3	D13/A030	084413.A14
CW3	F	Type-3	M16/A033	084413.A14
CW4	A	Type-4	E13/A033	084413.A15
CW4	B	Type-4	A16/A033	084413.A15
CW4	C	Type-4	A10/A033	084413.A15
CW4	D	Type-4	E13/A033	084413.A15
CW5	A	Type-5	D1/A030	084413.A16
CW5	B	Type-5	A16/A032	084413.A16
CW5	C	Type-5	A13/A031	084413.A16
CW5	D	Type-5	D3/A030	084413.A16
CW5	E	Type-5	D6/A030	084413.A16
CW5	F	Type-5	D8/A030	084413.A16
CW5	G	Type-5	D11/A030	084413.A16
CW5	H	Type-5	M13/A033	084413.A16
CW5	J	Type-5	J13/A033	084413.A16
CW5	K	Type-5	A1/A030	084413.A16
CW5	L	Type-5	E16/A033	084413.A16
CW5	M	Type-5	F16/A032	084413.A16
CW6	A	Type-6	A1/A032	084413.A17

WINDOW, CURTAIN WALL AND STOREFRONT SYSTEM GENERAL NOTES

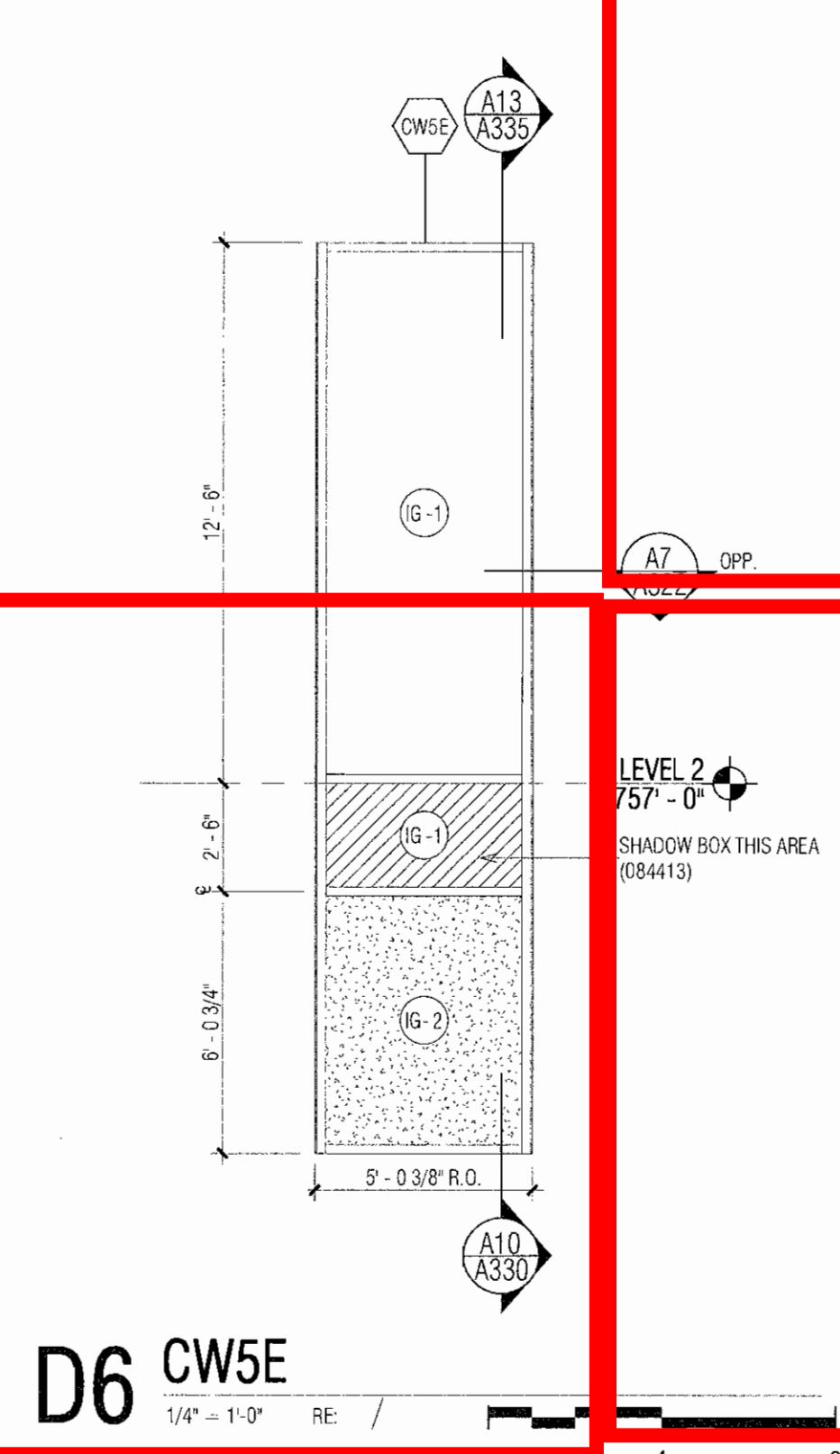
- GENERAL NOTES APPLY TO ALL STOREFRONT AND CURTAIN WALL SHEETS AND DETAILS.
- STOREFRONT AND CURTAIN WALL DIMENSIONING IS FOR ROUGH OPENINGS WHICH INCLUDES PERIMETER JOINT.
- REFER TO SECTION 088530 "GLAZING" FOR GLAZING TYPE SCHEDULE UNLESS OTHERWISE NOTED.
- PROVIDE SAFETY GLASS WHERE REQUIRED IN COMPLIANCE WITH BUILDING CODE AND AUTHORITIES HAVING JURISDICTION AND WHERE INDICATED: SAFETY GLASS: CATEGORY I MATERIALS COMPLYING WITH TESTING REQUIREMENTS IN IBC/IFC, PART 1001; WHERE GLAZING UNITS INCLUDES MORE THAN 9 SQ. FT. IN EXPOSED SURFACE AREA OF ONE SIDE, PROVIDE GLAZING PRODUCTS THAT COMPLY WITH CATEGORY II MATERIALS, FOR 116'S 9 SQ. FT. OR LESS IN EXPOSED SURFACE AREA OF ONE SIDE, PROVIDE GLAZING PRODUCTS THAT COMPLY WITH CATEGORY I OR II MATERIALS EXCEPT FOR HAZARDOUS LOCATIONS AS DEFINED IN THE CURRENT IBC BUILDING CODE, WHERE CATEGORY I MATERIALS ARE REQUIRED BY 16 CFR 1201.
- REFER TO SECTION 084113 "ALUMINUM-FRAMED ENTRANCES AND STOREFRONTS" FOR FACTORY FINISHES ON ENTRANCES AND STOREFRONT SYSTEMS.
- ALL STOREFRONT AND ENTRANCE SYSTEMS ARE INTERIOR SYSTEMS UNLESS OTHERWISE NOTED.
- REFER TO SECTION 084413 "GLAZED ALUMINUM CURTAIN WALLS" FOR FACTORY FINISHES ON ENTRANCES, WINDOWS AND CURTAIN WALL SYSTEMS.
- REFER TO SECTION 084413 "GLAZED ALUMINUM CURTAIN WALLS" FOR CURTAIN WALL TYPES.
- REFER TO SECTION 088530 "METAL-FRAMED SKYLIGHTS" FOR FACTORY FINISHES ON METAL-FRAMED SKYLIGHT SYSTEMS.
- INTERIOR ENTRANCE, STOREFRONT SYSTEMS, LOCATIONS AND QUANTITIES, REFER TO FLOOR PLAN DRAWING SHEET A102 AND INTERIOR ELEVATIONS.
- ENTRANCE CURTAIN WALL SYSTEM MARKS, LOCATIONS AND QUANTITIES, REFER TO BUILDING ELEVATIONS IN DRAWING SERIES 200 SHEETS, AND FLOOR PLANS DRAWING SERIES 100 SHEETS.



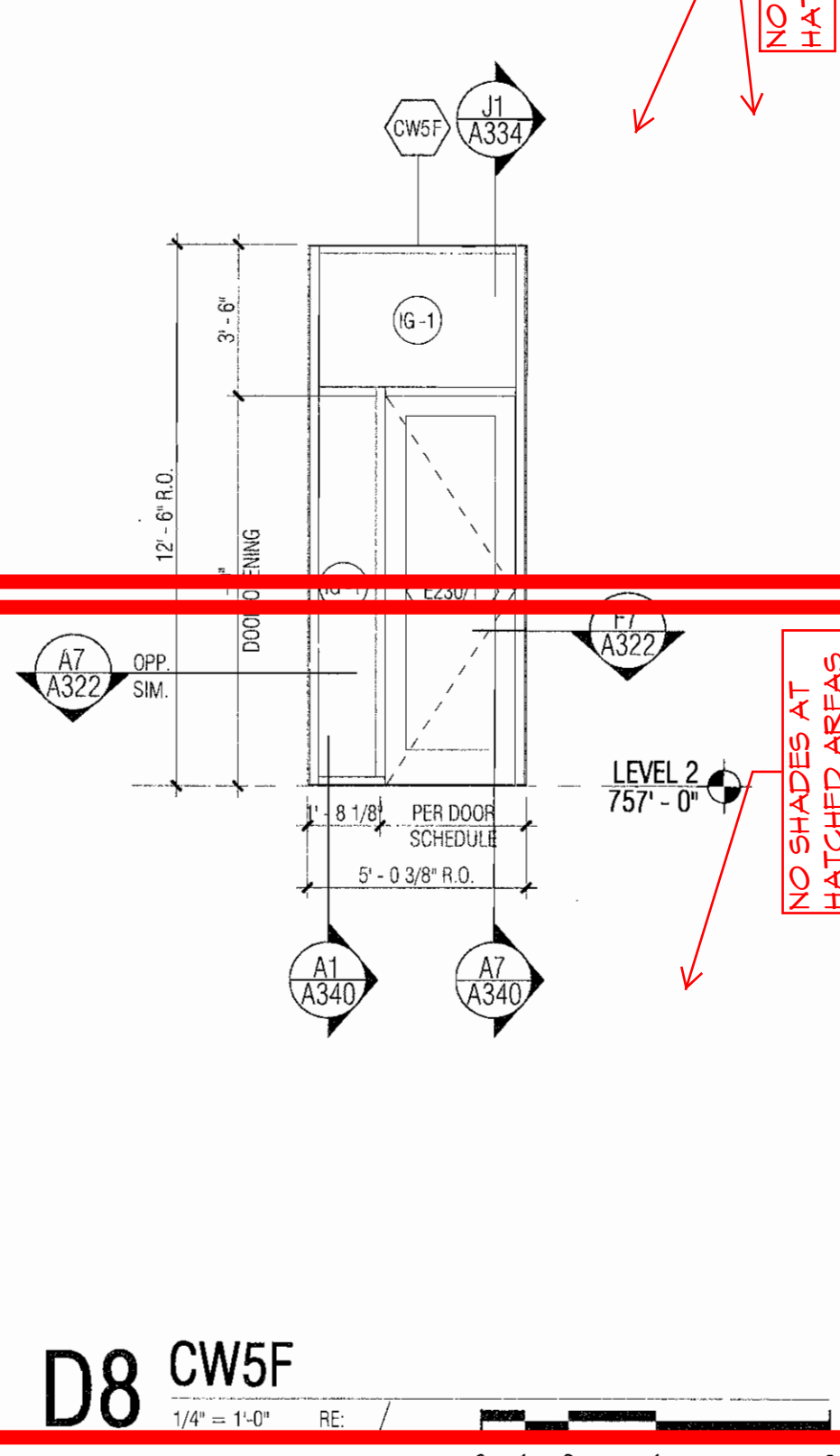
D1 CW5A
1/4" = 1'-0" RE / 0 1 2 4 8



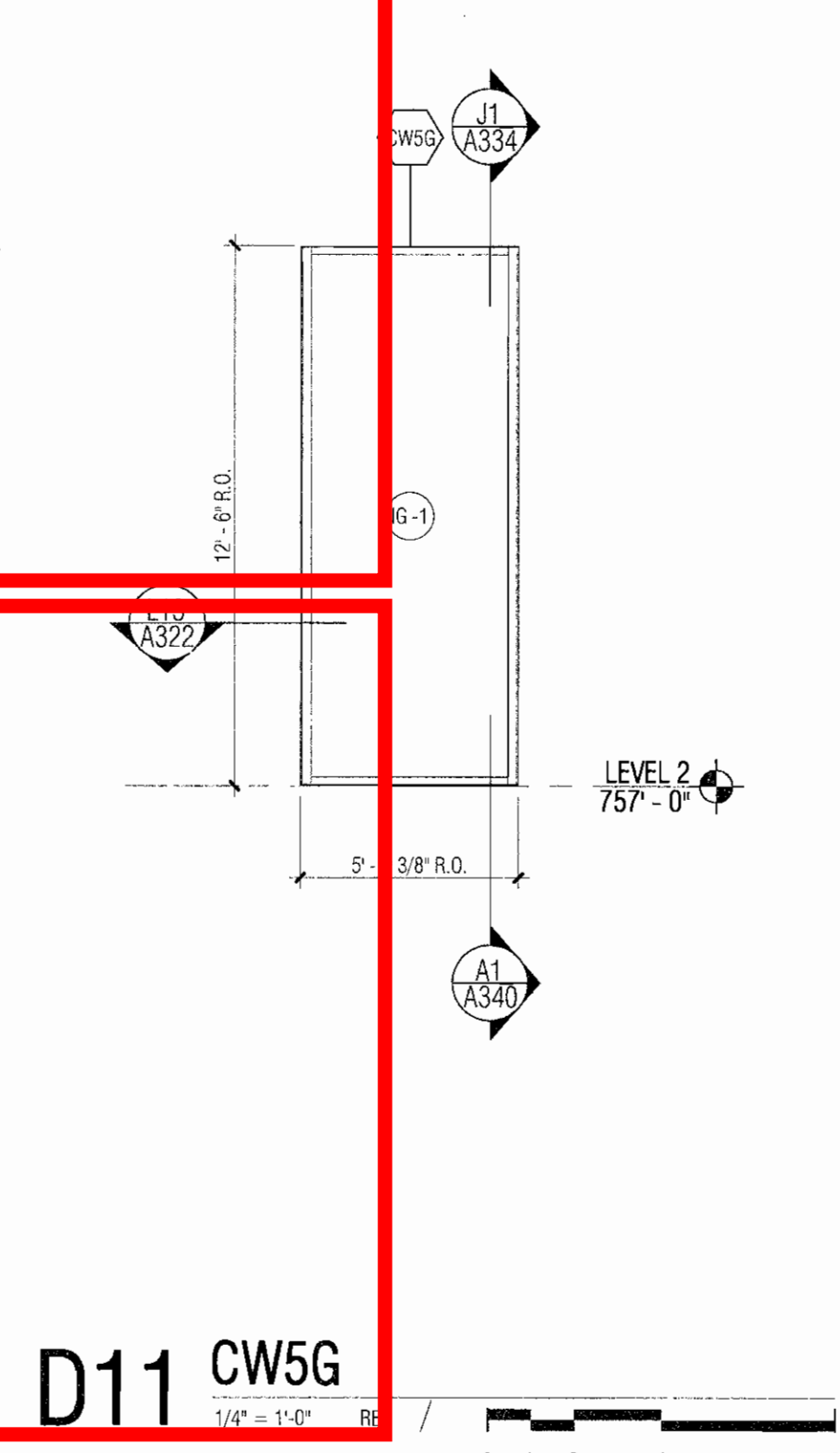
D3 CW5D
1/4" = 1'-0" RE / 0 1 2 4 8



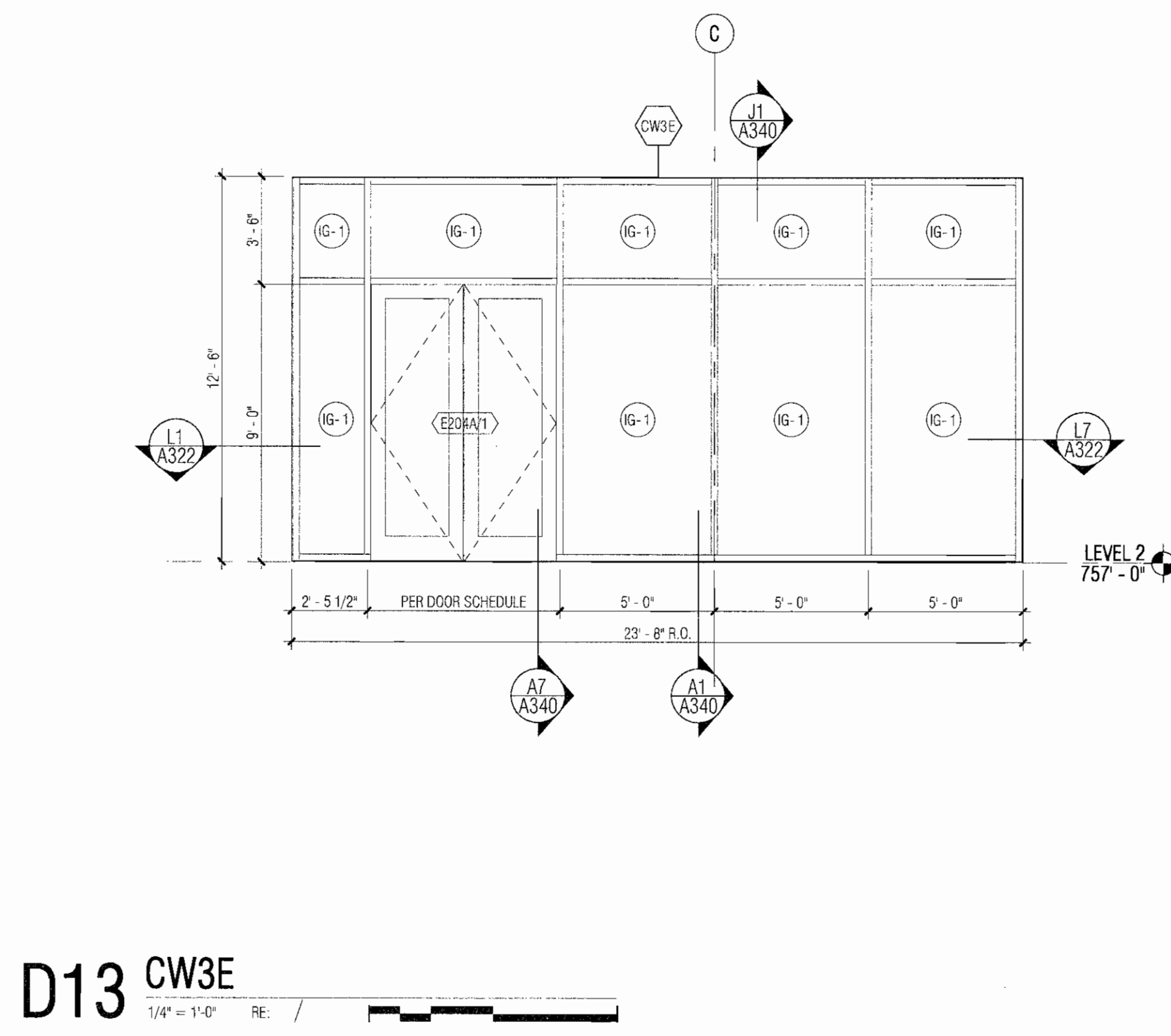
D6 CW5E
1/4" = 1'-0" RE / 0 1 2 4 8



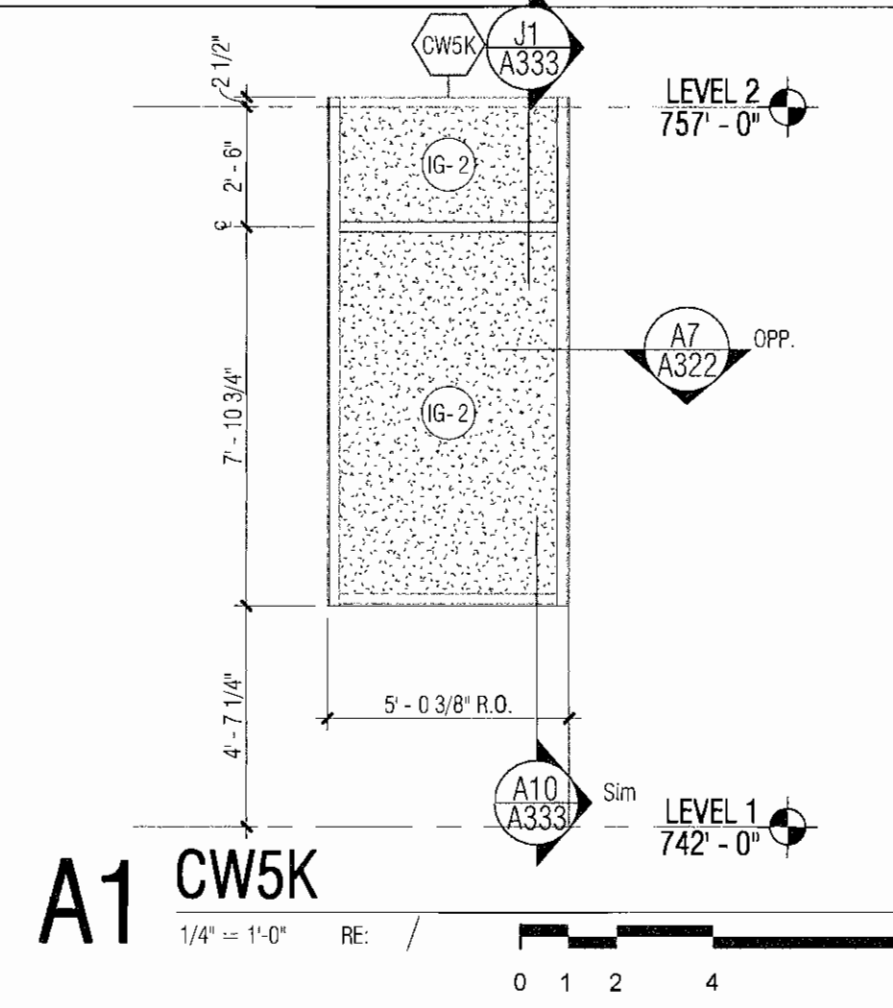
D8 CW5F
1/4" = 1'-0" RE / 0 1 2 4 8



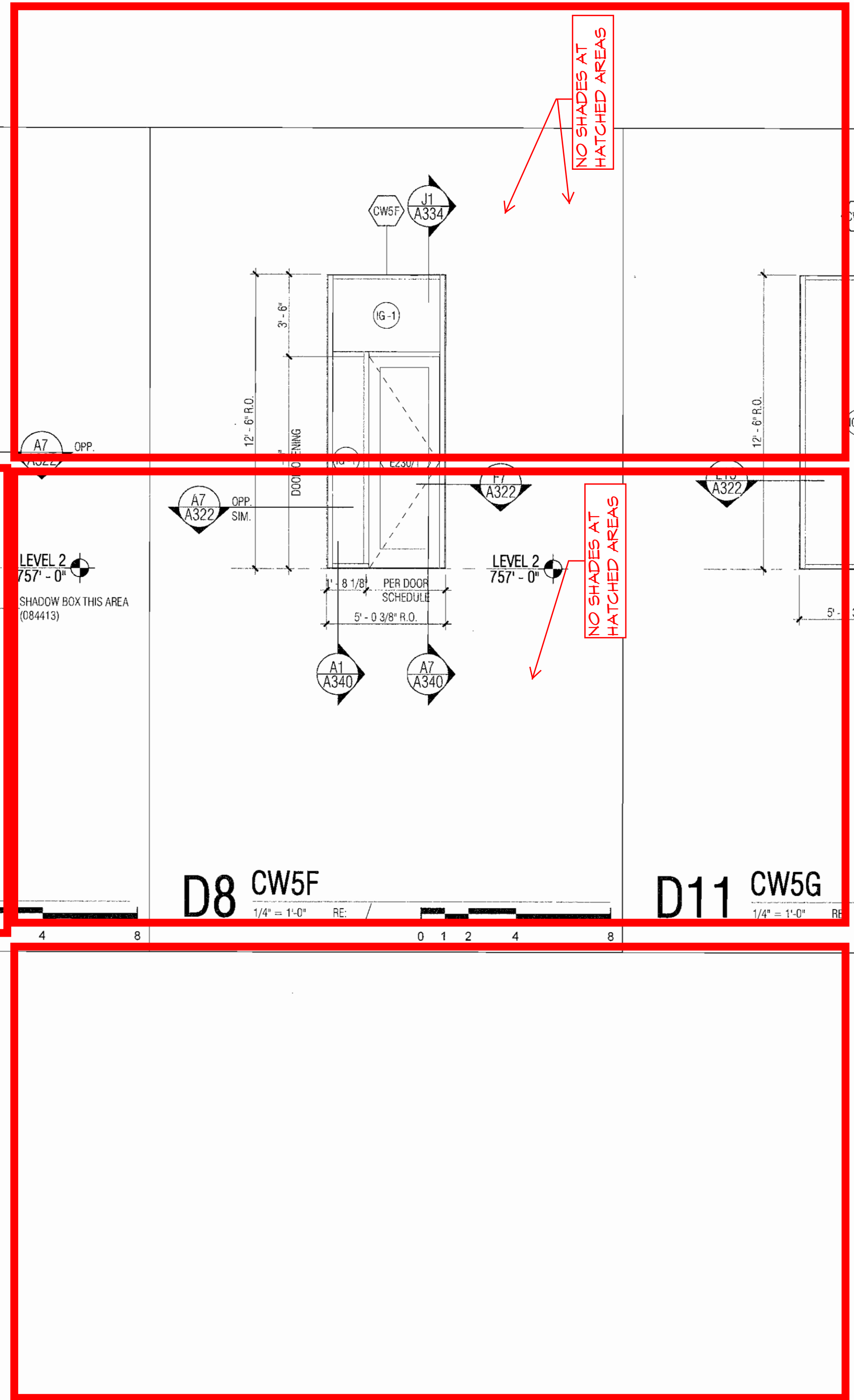
D11 CW5G
1/4" = 1'-0" RE / 0 1 2 4 8



D13 CW3E
1/4" = 1'-0" RE / 0 1 2 4 8

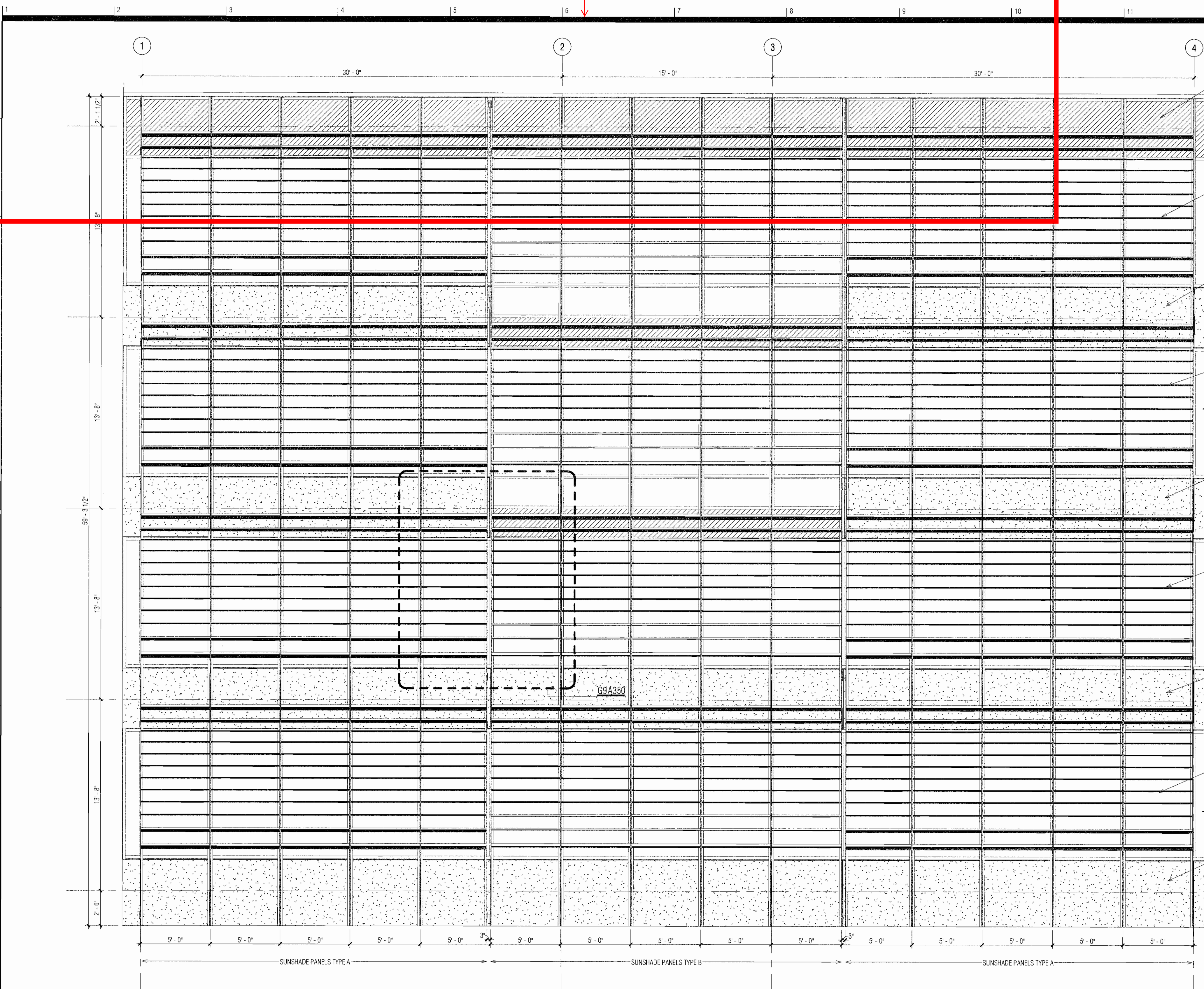


A1 CW5K
1/4" = 1'-0" RE / 0 1 2 4 8



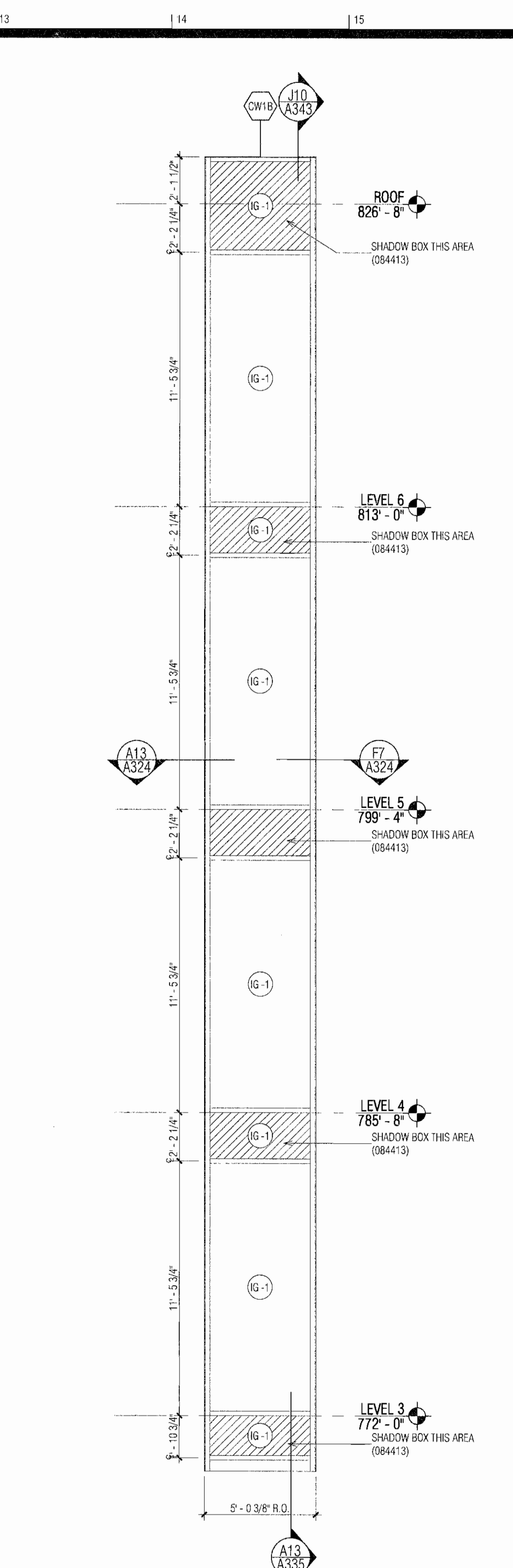
PCCLC - School of Medicine Expansion

CURTAIN WALL SCHEDULE & TYPES
A030



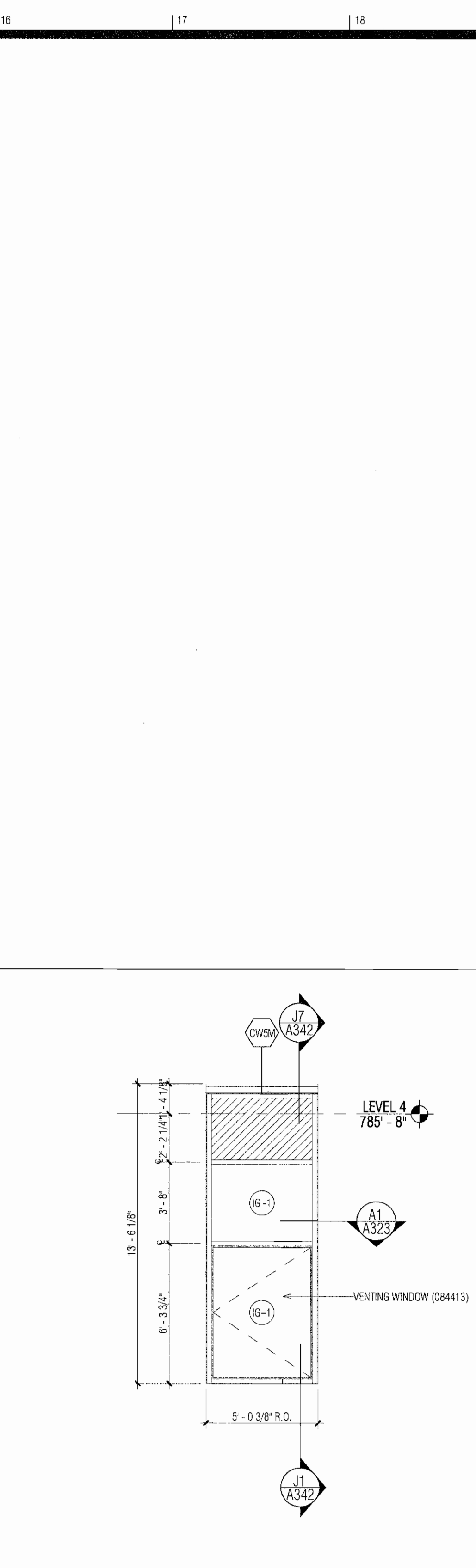
F1 Horizontal Sunshade Elevation

1/4" = 1'-0" RE:



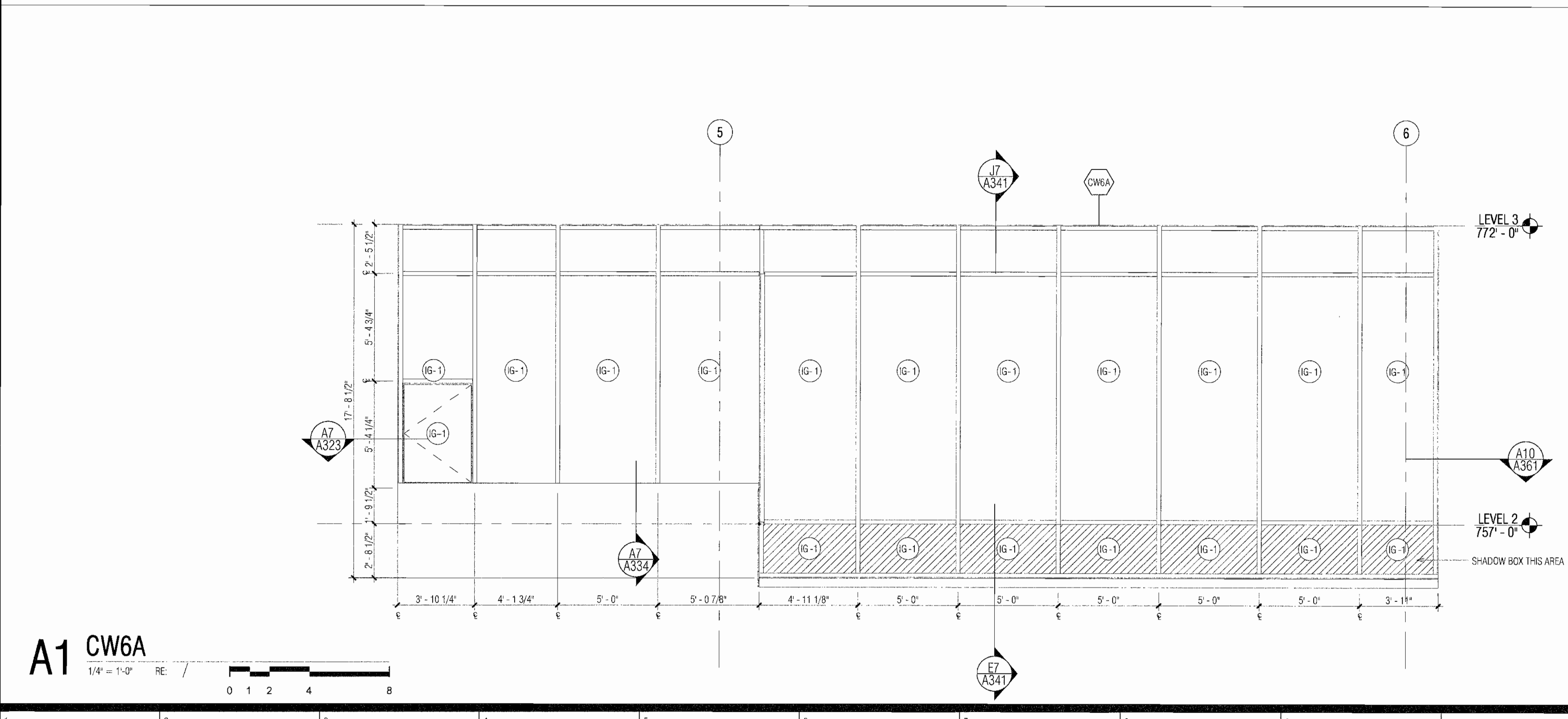
F13 CW1B

1/4" = 1'-0" RE:



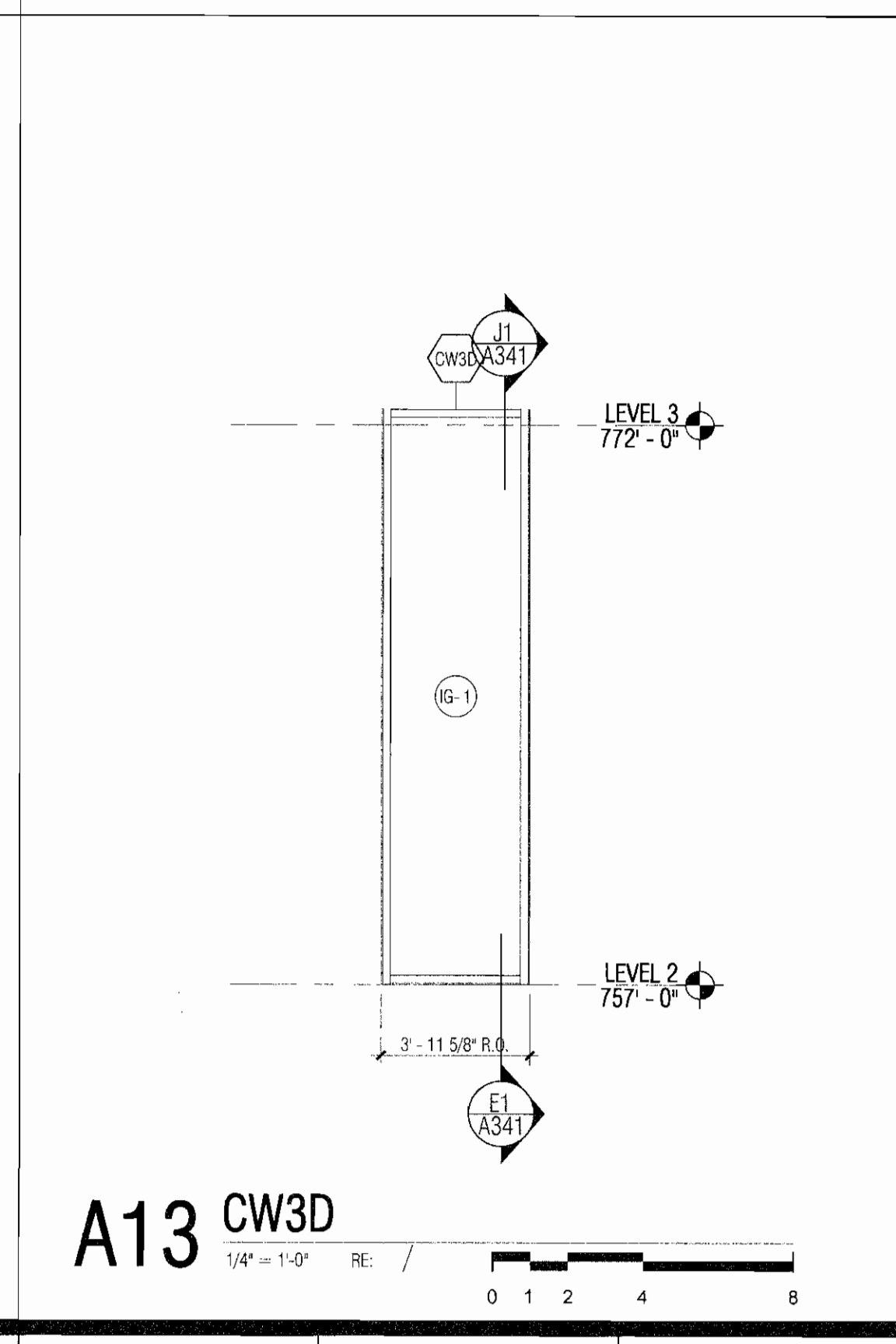
F16 CW5M

1/4" = 1'-0" RE:



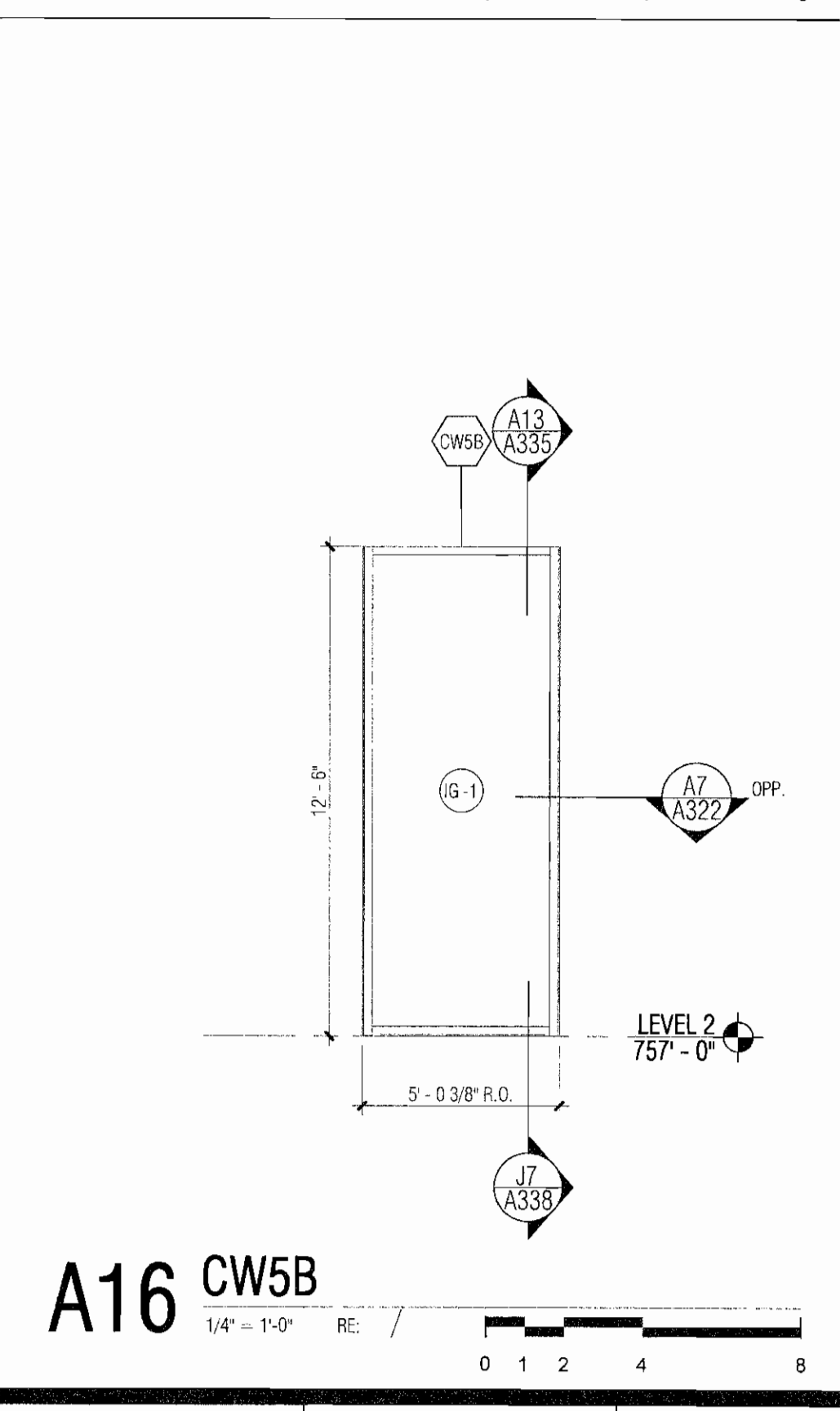
A1 CW6A

1/4" = 1'-0" RE:



A13 CW3D

1/4" = 1'-0" RE:



A16 CW5B

1/4" = 1'-0" RE:

