

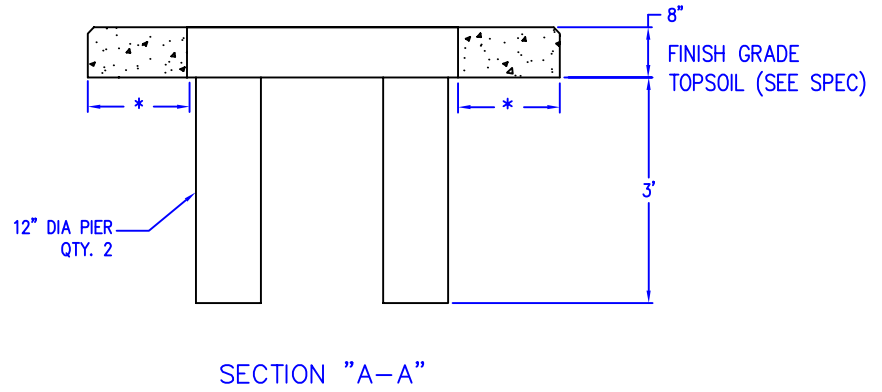
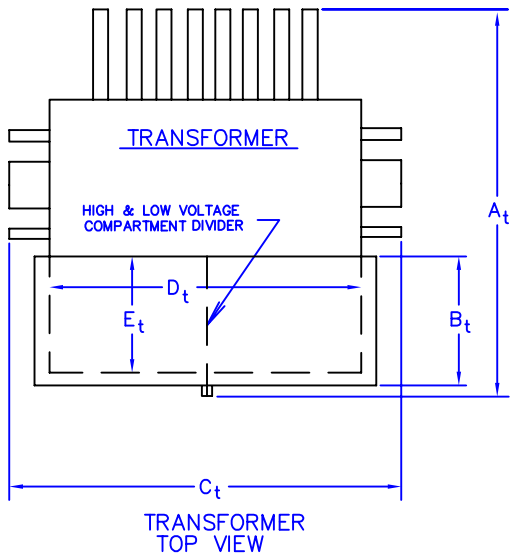
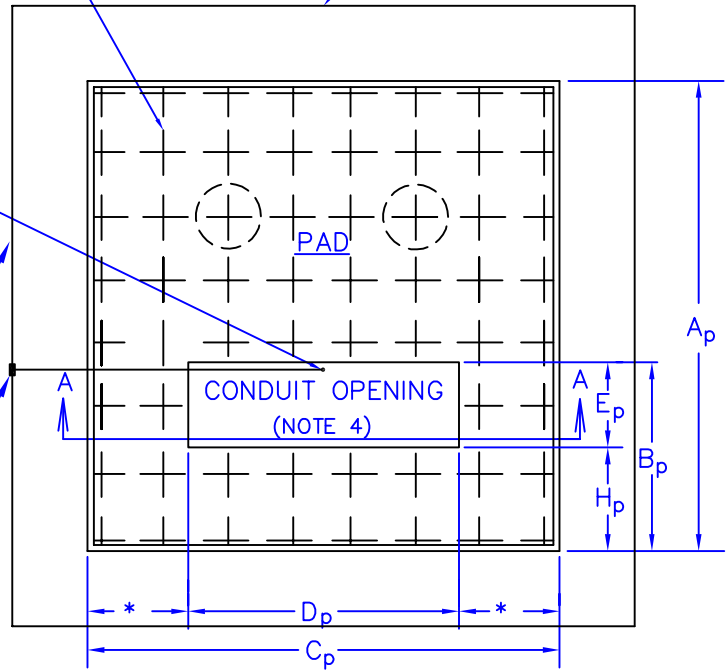
WELDED OR WIRED #4 REINFORCING
ROD SET APPROX. 12" ON CENTERS

NOTE 5

5/8"x10' GROUND ROD

#2/0 AWG BARE
STRANDED COPPER

EXOTHERMIC WELDED CONNECTION



PAD DIMENSIONS

$$A_p = A_t + 12" \quad B_p = B_t + 4.5" \quad C_p = C_t + 12" \quad D_p = D_t - 3" \quad E_p = E_t - 3" \quad H_p = 7.5"$$

- NOTES:
1. E_p SHOULD NEVER BE LESS THAN 12 INCHES.
 2. A_t AND C_t ARE OVERALL DIMENSIONS, WHICH INCLUDE HANDLES, COOLING FINS, LIFTING LUGS, ETC.
 3. REINFORCED CONCRETE PAD SHALL BE CONSTRUCTED IN ACCORDANCE WITH CSI STANDARD SPECIFICATIONS FOR REINFORCED CONCRETE, LATEST EDITION.
 4. CONDUITS SHOULD BE CAREFULLY LOCATED IN CONDUIT OPENING SO THEY WILL NOT INTERFERE WITH TRANSFORMER HIGH & LOW VOLTAGE COMPARTMENT DIVIDER OR OIL DRAINAGE VALVE.
 5. GROUND LOOP TO BE INSTALLED 12" OUT AND 12" DEEP WITH EXOTHERMIC CONNECTIONS.
 6. 8 FT. MINIMUM CLEARANCE IN FRONT OF TRANSFORMER.

REV	DATE
0	7/26/05
1	1/23/12
2	10/8/13
3	4/9/2025
DRAWN BY: CSR	
REVISED BY: BN	

Construction Standard Transformer Pad Detail

337313



UNIVERSITY OF MISSOURI-COLUMBIA
Campus Facilities
Energy Management

DRAWING
NOT TO SCALE
DATE: 7/26/05