



University of Missouri System

Credit Ratings	Moody's	S&P
Long-Term Debt	Aa1	AA+
Variable Rate Debt	VMG1	A-1+
Commercial Paper	P-1	A-1+

Debt Snapshot Report

Debt Outstanding

	3/31/24	6/30/24	9/30/24	12/31/24	3/31/25	6/30/25
Fixed Rate	1,447,420	1,447,420	1,640,890	1,630,015	1,630,015	1,630,015
Variable Rate Debt	66,485	66,485	-	-	-	-
Commercial Paper	-	-	-	-	-	-
Total Debt Outstanding	1,513,905	1,513,905	1,640,890	1,630,015	1,630,015	1,630,015
Weighted Average Life (years)	12.9	12.6	12.4	12.2	12.0	11.7
Unspent Bond Proceeds	-	-	-	-	-	-

Interest Rate Swaps

Interest Rate Swaps - Notional Amount	66,485	66,485	-	-	-	-
---------------------------------------	--------	--------	---	---	---	---

Weighted Average Cost of Funds

Fixed Rate	3.34%	3.34%	3.22%	3.22%	3.22%	3.22%
Variable Rate	3.29%	3.63%	-	-	-	-
Commercial Paper	N/A	N/A	N/A	N/A	N/A	N/A
Total Weighted Average Cost of Funds	3.34%	3.35%	3.22%	3.22%	3.22%	3.22%
Impact of Interest Rate Swaps	0.02%	0.01%	-	-	-	-
Total Weighted Average Cost of Funds After Interest Rate Swaps	3.36%	3.36%	3.22%	3.22%	3.22%	3.22%

Selected Market Interest Rates

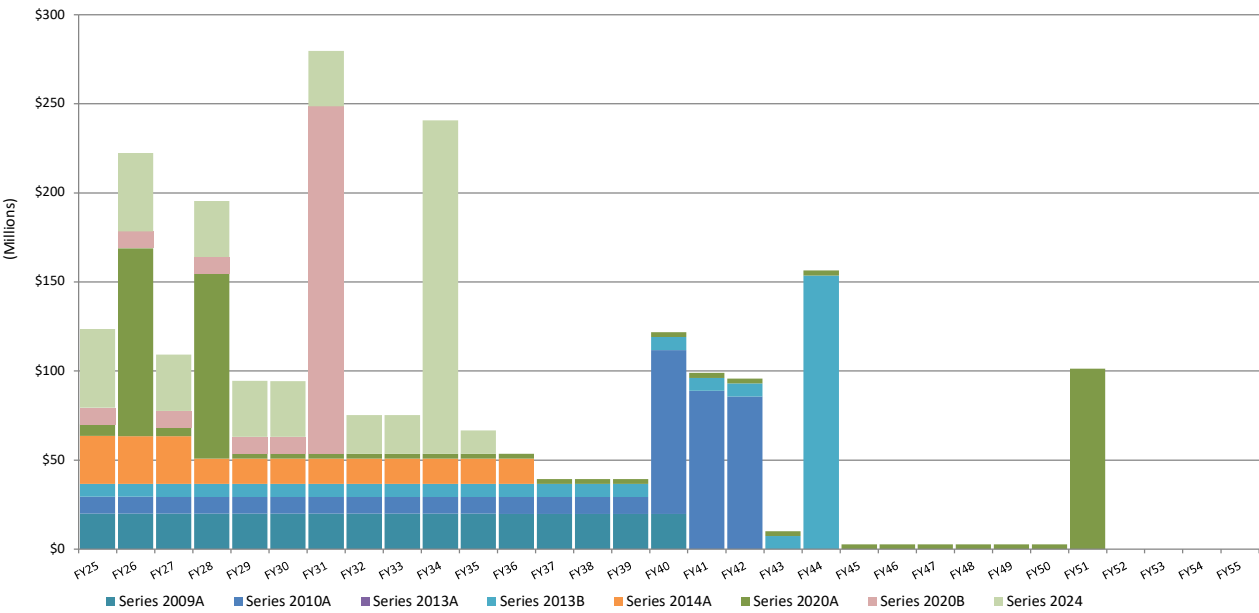
SIFMA Index	3.64%	3.88%	3.15%	3.62%	2.87%	1.92%
SOFR Index	5.34%	5.33%	4.96%	4.49%	4.41%	4.45%
10 Year Treasury	4.20%	4.36%	3.81%	4.58%	4.23%	4.24%
10 Year Cost of Funds - UM Tax Exempt Rate	2.66%	3.04%	2.80%	3.26%	3.46%	3.41%
30 Year Treasury	4.34%	4.51%	4.14%	4.78%	4.59%	4.78%
30 Year Cost of Funds - UM Tax Exempt Rate	3.93%	4.02%	3.82%	4.20%	4.54%	4.79%

Commercial Paper Outstanding as of June 30, 2025

Purpose	Dealer	Par Amount (\$000)	Issue Date	Maturity Date	Term (Days)	Interest Rate
---------	--------	--------------------	------------	---------------	-------------	---------------

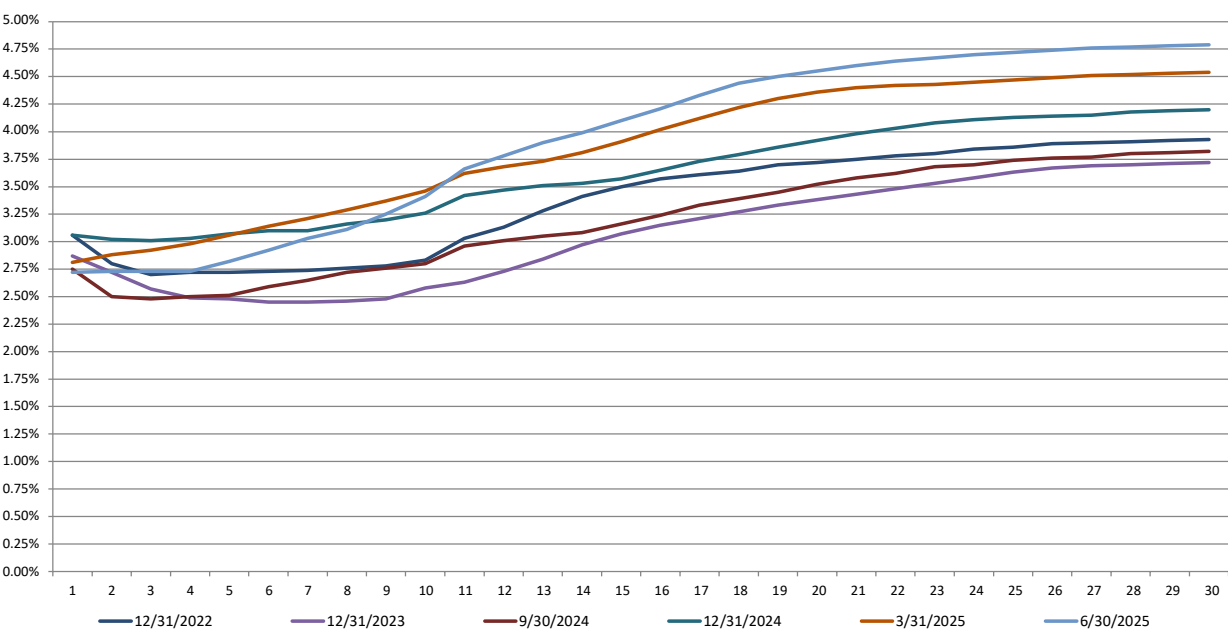
No Commercial Paper Outstanding as of June 30, 2025

Debt Service Structure*



* Debt service includes both principal and interest.

Comparative Cost of Funds (UM System Tax-Exempt Rates)†



† Data provided by Janney Montgomery Scott LLC. Rates based on University of Missouri specific spreads over the Municipal Market Data curve.

Revenue Bonds and Commercial Paper by Campus as of June 30, 2025 (in \$ thousands)

Purpose	UMC	UMKC	UMSL	S&T	MU Health Care	UBANK	TOTAL
Athletics	118,871	-	-	-	-	-	118,871
Campus Utilities	102,378	7,651	22,842	-	-	-	132,871
Classroom & Research Facilities	119,320	19,120	11,722	35,905	-	-	186,067
Critical Repairs/Maintenance	12,522	5,338	3,708	3,295	-	-	24,863
Housing	-	-	-	-	438,409	-	438,409
MU Health Care	238,793	42,539	56,502	12,630	-	-	350,464
Parking	23,562	29,845	-	8,054	-	-	61,461
Recreational Facilities	16,441	5,218	-	28,275	-	-	49,934
Student Centers	18,979	29,361	5,753	5,901	-	-	59,994
Reserves*	-	-	-	-	-	207,081	207,081
Debt Outstanding	650,866	139,072	100,527	94,060	438,409	207,081	1,630,015
Debt-Related Accounting Items	-	-	-	-	-	77,040	77,040
Total	650,866	139,072	100,527	94,060	438,409	284,121	1,707,055

* In the case of a negative Reserves balance, the amount shown indicates the amount that internal loans exceed the University's outstanding revenue bond and commercial paper balances

Debt Financing of Internal Projects by Campus as of June 30, 2025 (in \$ thousands)

Project Name	Purpose	Total Approved	Total Drawn	Total Future Draws	Cash Draw Estimates		
					FY 2026	FY 2027	FY 2028
UMC							
North Endzone (NEZ)	Athletics	200,000	4,889	195,111	165,000	30,111	-
Total UMC		200,000	4,889	195,111	165,000	30,111	-
MU Health Care							
Health Pavilion	MUHC	8,619	-	8,619	8,619	-	-
Total MU Health Care		8,619	-	8,619	8,619	-	-
UMKC							
Steam Energy	Utilities	14,000	7,651	6,609	6,609	-	-
Total UMKC		14,000	7,651	6,609	6,609	-	-
UMSL							
Total UMSL		-	-	-	-	-	-
S&T							
Total S&T		-	-	-	-	-	-
Debt Financing Totals		222,619	12,540	210,339	180,228	30,111	-