



Mizzou UMKC S&T UMSL
University of Missouri System

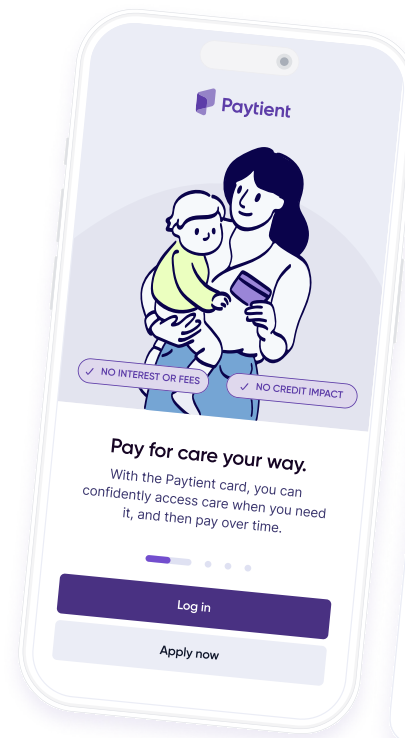


Ready to take control of your healthcare costs?

Get started in minutes!

1. Create your account

Paying for care* with the Paytient card starts here! Download the Paytient app or visit my.paytient.com/signup to get started. We use biometric login and two-factor authentication to keep your information secure.



Let's get started

Please enter your phone number

Phone number

(468) 710-5614

Create your account

Set an email address and password for a new account. A strong password is at least 10 characters long and contains numbers, letters, and/or symbols.

Email address

keegan@email.com

Password

••••••••

What's your estimated income before tax?

Please share your annual or monthly income. Reminder **we don't run any credit checks** but are required by law to ask this information.

☒ Annual ☐ Monthly

Estimated annual income ⓘ

Enter your estimated annual income

[Learn more](#)

What are your estimated monthly expenses?

Please share your monthly expenses. Reminder **we don't run any credit checks** but are required by law to ask this information.

Estimated monthly expenses ⓘ

Enter your estimated monthly expenses

[Learn more](#)

2. Check your eligibility

We are required to confirm that you are able to afford your Paytient monthly minimum payments, and we do this by comparing your income to your expenses. This takes just minutes to complete and will not affect your credit score.

3. Repay over time through payroll

With automatic payroll deduction, simply choose the repayment plan that works for your budget, and forget it!

Payments will automatically be deducted from your paycheck at the pace you chose. You can also link a bank account or debit card for one-time payments, or add an HSA/FSA card for qualifying expenses.

This month's payments Details

<input checked="" type="checkbox"/>	Paid Jul 10, 2024	\$60.00 >
<input type="checkbox"/>	Payroll deduction requested Autopay Jul 22, 2024	\$60.00 >

Statement payment progress ⓘ

Paid \$60.00

Left \$60.00



hello@paytient.com | my.paytient.com/signup

*The Paytient card works with providers in approved merchant categories, including select online merchants. Providers self-select their categories, which may not be categorized as expected. These categories vary by Sponsor. Check approved categories on my.paytient.com or the Paytient app. Some purchases must be made at specific points of sale, like pharmacy check-outs. Note: The card cannot be used for health insurance premiums. The Paytient Visa Credit Card is issued by Commerce Bank, Member FDIC.